

30 September 2013 | 1300 hrs | 186/2013

In 2012, persons aged 60 and over amounted to 102,026, or 24.2 per cent of the total population.

International Day of Older Persons: 2013

To commemorate the International Day of Older persons, the National Statistics Office is releasing a set of statistics relating to the elderly population in Malta.

Nearly a quarter of the population, or 102,026 persons, were 60 years old or over. Women made up the largest share of this population segment, reaching 55 per cent of the total (Table 1).

There were 75 grooms and 18 brides who tied the knot last year. A third of these persons married for the first time, while 54 per cent were previously divorced (Table 2).

Out of 3,418 persons who passed away during 2012, 82 per cent were aged 65 and over (Table 7). Just over half these deaths were caused by diseases of the circulatory system, followed by neoplasms, accounting for 24 per cent (Table 8).

Last year, total government expenditure on retirement and old-age pensions amounted to €416 million, increasing by 7 per cent when compared to 2011 levels (Table 3).

Figures derived from the 2011 Statistics on Income and Living Conditions Survey show that persons over 59 had an at-risk-of-poverty rate of 17 per cent and an at-risk-of-poverty or social exclusion rate of 21 per cent (Tables 4 and 5). From the same survey, results show that 48 per cent of the elderly could not afford to pay for a one-week annual holiday away from home, while 23 per cent could not afford to face unexpected expenses of €450 and over. Furthermore, 17 per cent said that they were not able to keep their home adequately warm in winter (Table 6).

Past Labour Force Surveys reveal an increasing trend in the participation of persons aged 60 and over in employment, rising from 4 per cent in 2002 to 7 per cent in 2012 (Chart 1).

There were 43 persons aged 60 and over reading for a degree at the University of Malta. Around 49 per cent of these students were attending a course leading to a Second Degree or Postgraduate Certificate, while 7 per cent were undertaking a course at PhD level. Nearly 70 per cent of attendees were males (Table 9).

Compiled by:

**Unit C1: Living Conditions
and Culture Statistics**

**Directorate C: Social
Statistics**

Further information on data:

Ms Nicola VELLA HABER

T. +356 2599 7526

E. nicola.vella-haber@gov.mt

A rise in outbound tourists aged 65 and over was recorded over the three past years, increasing from 19,598 in 2010 to 28,460 in 2012. At 86 per cent, most of these outbound tourists travelled to EU countries, while 26 per cent opted for non-package travel. The two most popular destinations were Italy and the UK, with shares of 29 and 27 per cent of the total respectively (Table 10) ■

Kindly indicate source when quoting from this release.

The advance release calendar may be consulted at www.nso.gov.mt

Issued by: **External Cooperation and Communication Unit, National Statistics Office, Lascaris, Valletta VLT 2000, Malta.**
T. +356 2599 7219 F. +356 2599 7205 E. nso@gov.mt

Table 1. Total population by age: 31 December 2012

| Age | Males | Females | Total |
|--------------|----------------|----------------|----------------|
| Total | 209,880 | 211,484 | 421,364 |
| 0-59 | 163,419 | 155,919 | 319,338 |
| 60-64 | 14,741 | 15,007 | 29,748 |
| 60 | 2,817 | 2,899 | 5,716 |
| 61 | 2,801 | 2,872 | 5,673 |
| 62 | 3,046 | 3,030 | 6,076 |
| 63 | 3,022 | 3,046 | 6,068 |
| 64 | 3,055 | 3,160 | 6,215 |
| 65-69 | 13,243 | 14,260 | 27,503 |
| 65 | 3,016 | 3,245 | 6,261 |
| 66 | 2,859 | 3,064 | 5,923 |
| 67 | 2,700 | 2,902 | 5,602 |
| 68 | 2,797 | 2,900 | 5,697 |
| 69 | 1,871 | 2,149 | 4,020 |
| 70-74 | 7,039 | 8,292 | 15,331 |
| 70 | 1,289 | 1,435 | 2,724 |
| 71 | 1,323 | 1,572 | 2,895 |
| 72 | 1,436 | 1,709 | 3,145 |
| 73 | 1,517 | 1,804 | 3,321 |
| 74 | 1,474 | 1,772 | 3,246 |
| 75-79 | 5,890 | 7,911 | 13,801 |
| 75 | 1,389 | 1,772 | 3,161 |
| 76 | 1,365 | 1,679 | 3,044 |
| 77 | 1,161 | 1,593 | 2,754 |
| 78 | 1,012 | 1,418 | 2,430 |
| 79 | 963 | 1,449 | 2,412 |
| 80-84 | 3,291 | 5,558 | 8,849 |
| 80 | 852 | 1,375 | 2,227 |
| 81 | 731 | 1,270 | 2,001 |
| 82 | 667 | 1,144 | 1,811 |
| 83 | 556 | 938 | 1,494 |
| 84 | 485 | 831 | 1,316 |
| 85-89 | 1,684 | 3,136 | 4,820 |
| 85 | 449 | 828 | 1,277 |
| 86 | 410 | 708 | 1,118 |
| 87 | 354 | 616 | 970 |
| 88 | 274 | 572 | 846 |
| 89 | 197 | 412 | 609 |
| 90+ | 573 | 1,401 | 1,974 |

* Based on the November 2011 Census

Table 2. Marriages involving spouses aged 60+ by previous marital status: 2008-2012

| Year | Previous marital status | | | | Total |
|---------------|-------------------------|---------|----------|----------|-----------|
| | Single | Widowed | Annulled | Divorced | |
| Grooms | | | | | |
| 2008 | 9 | 11 | - | 18 | 38 |
| 2009 | 11 | 13 | 1 | 20 | 45 |
| 2010 | 25 | 13 | 1 | 12 | 51 |
| 2011 | 8 | 17 | 3 | 21 | 49 |
| 2012 | 24 | 7 | 1 | 43 | 75 |
| Brides | | | | | |
| 2008 | 13 | 3 | - | 14 | 30 |
| 2009 | 4 | 3 | - | 12 | 19 |
| 2010 | 4 | 5 | - | 5 | 14 |
| 2011 | 6 | 5 | - | 10 | 21 |
| 2012 | 7 | 2 | 2 | 7 | 18 |

Table 3. Retirement and Old Age Pensions: 2009-2012

| | 2009 | 2010 | 2011 | 2012 |
|---|----------------|----------------|----------------|----------------|
| | €000's | | | |
| Contributory Benefits | 501,933 | 562,437 | 561,161 | 604,939 |
| <i>...of which</i> | | | | |
| Pensions in respect of Retirement | 319,507 | 369,892 | 367,721 | 395,765 |
| <i>...of which</i> | | | | |
| Retirement Pension | 48,156 | 54,025 | 47,775 | 46,059 |
| National Minimum Pension | 29,283 | 29,142 | 29,597 | 30,130 |
| Increased Retirement Pension | 11,963 | 12,546 | 16,150 | 13,640 |
| Two-thirds Pension | 217,825 | 260,632 | 259,789 | 290,222 |
| Increased National Minimum Pension | 11,741 | 13,031 | 13,954 | 15,236 |
| Decreased National Minimum Pension | 539 | 515 | 455 | 478 |
| Non-Contributory Benefits | 159,904 | 168,915 | 166,834 | 177,620 |
| <i>...of which</i> | | | | |
| Old-Age | 18,490 | 19,717 | 19,974 | 20,457 |
| Total Social Security Benefits | 661,837 | 731,352 | 727,995 | 782,559 |
| Retirement and Old-Age pensions as a percentage of Total Social Security Benefits | 51.1% | 53.3% | 53.3% | 53.2% |

Table 4. Persons at-risk-of-poverty by age: 2011

| Age | Males | | Females | | Total * | |
|----------------|---------------|-------------|---------------|-------------|---------------|-------------|
| | Number | % total | Number | % total | Number | % total |
| 0-59 | 23,140 | 14.1 | 25,090 | 15.9 | 48,230 | 15.0 |
| 60+ | 7,680 | 18.5 | 7,690 | 15.7 | 15,360 | 16.9 |
| Total | 30,820 | 15.0 | 32,770 | 15.8 | 63,590 | 15.4 |
| 0-64 | 25,440 | 14.2 | 27,190 | 15.7 | 52,630 | 15.0 |
| 65+ | 5,380 | 20.1 | 5,580 | 16.5 | 10,960 | 18.1 |
| Total | 30,820 | 15.0 | 32,770 | 15.8 | 63,590 | 15.4 |
| 0-69 | 27,170 | 14.4 | 29,130 | 15.8 | 56,300 | 15.1 |
| 70+ | 3,650 | 21.5 | 3,650 | 15.8 | 7,290 | 18.2 |
| Total * | 30,820 | 15.0 | 32,770 | 15.8 | 63,590 | 15.4 |

* Totals may not tally due to rounding

Table 5. Persons at-risk-of-poverty or social exclusion by age: 2011

| Age | Males | | Females | | Total * | |
|----------------|---------------|-------------|---------------|-------------|---------------|-------------|
| | Number | % total | Number | % total | Number | % total |
| 0-59 | 33,523 | 20.4 | 36,119 | 22.9 | 69,642 | 21.6 |
| 60+ | 8,984 | 21.6 | 9,458 | 19.3 | 18,442 | 20.3 |
| Total | 42,507 | 20.7 | 45,577 | 22.0 | 88,084 | 21.3 |
| 0-64 | 36,355 | 20.3 | 38,723 | 22.4 | 75,079 | 21.3 |
| 65+ | 6,152 | 23.0 | 6,854 | 20.3 | 13,005 | 21.5 |
| Total | 42,507 | 20.7 | 45,577 | 22.0 | 88,084 | 21.3 |
| 0-69 | 38,519 | 20.4 | 41,023 | 22.3 | 79,542 | 21.3 |
| 70+ | 3,988 | 23.5 | 4,554 | 19.8 | 8,541 | 21.4 |
| Total * | 42,507 | 20.7 | 45,577 | 22.0 | 88,084 | 21.3 |

* Totals may not tally due to rounding

Table 6. Persons aged 65+ by various household characteristics: 2011

| Item | Capacity to afford | Persons at-risk-of-poverty | | All persons * | |
|--|---------------------|----------------------------|----------------|---------------|----------------|
| | | Number | % total | Number | % total |
| Paying for one week annual holiday away from home | Yes | 4,680 | 42.8 | 31,590 | 52.2 |
| | No | 6,250 | 57.2 | 28,920 | 47.8 |
| Eating a meal with meat, chicken, fish (or vegetarian equivalent) every second day | Yes | 9,490 | 87.7 | 55,480 | 92.1 |
| | No | 1,330 | 12.3 | 4,770 | 7.9 |
| Facing unexpected financial expenses (of €450 and over) | Yes | 8,010 | 74.0 | 46,650 | 77.4 |
| | No | 2,810 | 26.0 | 13,640 | 22.6 |
| Keeping home adequately warm | Yes | 8,690 | 80.0 | 49,890 | 82.7 |
| | No | 2,170 | 20.0 | 10,430 | 17.3 |
| Problems with dwelling | Have problem | Number | % total | Number | % total |
| No bath or shower in dwelling | Yes | : | : | [870] | [1.4] |
| | No | 10,820 | 98.7 | 59,690 | 98.6 |
| Leaking roof, damp walls/floors/foundation, or rot in window frames or floor | Yes | 2,860 | 26.1 | 14,420 | 23.8 |
| | No | 8,100 | 73.9 | 46,150 | 76.2 |
| Dwelling too dark/not enough light | Yes | 1,160 | 10.6 | 5,230 | 8.6 |
| | No | 9,750 | 89.4 | 55,290 | 91.4 |
| Noise from neighbours or from the street | Yes | 3,970 | 36.2 | 21,890 | 36.1 |
| | No | 6,990 | 63.8 | 38,680 | 63.9 |
| Pollution, grime or other environmental problems | Yes | 3,830 | 35.0 | 25,810 | 42.6 |
| | No | 7,130 | 65.0 | 34,760 | 57.4 |
| Crime, violence or vandalism in the area | Yes | 1,050 | 9.5 | 6,300 | 10.4 |
| | No | 9,910 | 90.5 | 54,260 | 89.6 |

Under represented figures are marked as follows:

[] estimate based on 20-50 counts

:

* Totals do not represent the total population of persons living in households as there were a number of households that did not respond to these questions

Table 7. Deaths by age in completed years at time of death: 2000-2012

| Year | Total | | | <i>of which...</i> | | | |
|------|--------------|-------|---------|--------------------|---------|-------|---------|
| | | | | 65-74 | | 75+ | |
| | Total | Males | Females | Males | Females | Males | Females |
| 2000 | 2,957 | 1,507 | 1,450 | 429 | 286 | 737 | 929 |
| 2001 | 2,935 | 1,496 | 1,439 | 392 | 265 | 753 | 970 |
| 2002 | 3,031 | 1,604 | 1,427 | 405 | 280 | 849 | 923 |
| 2003 | 3,164 | 1,595 | 1,569 | 396 | 278 | 836 | 1,064 |
| 2004 | 2,999 | 1,491 | 1,508 | 414 | 323 | 737 | 971 |
| 2005 | 3,130 | 1,576 | 1,554 | 428 | 277 | 791 | 1,039 |
| 2006 | 3,216 | 1,667 | 1,549 | 393 | 258 | 889 | 1,068 |
| 2007 | 3,111 | 1,610 | 1,501 | 368 | 250 | 854 | 1,012 |
| 2008 | 3,243 | 1,668 | 1,575 | 336 | 251 | 872 | 1,092 |
| 2009 | 3,221 | 1,672 | 1,549 | 352 | 217 | 940 | 1,097 |
| 2010 | 3,010 | 1,489 | 1,521 | 328 | 235 | 772 | 1,073 |
| 2011 | 3,267 | 1,664 | 1,603 | 371 | 228 | 911 | 1,151 |
| 2012 | 3,418 | 1,746 | 1,672 | 364 | 233 | 991 | 1,197 |

Table 8. Deaths of persons aged 65+ by cause: 2012

| Cause of death | Sex | Age | | | Total |
|---|----------|------------|--------------|--------------|--------------|
| | | 65-74 | 75-84 | 85+ | |
| Certain infectious and parasitic diseases | M | 4 | 4 | 2 | 10 |
| | F | - | 1 | 9 | 10 |
| Neoplasms | M | 133 | 142 | 76 | 351 |
| | F | 109 | 134 | 70 | 313 |
| Diseases of the blood and blood-forming organs and certain disorders involving the immune mechanism | M | - | - | 2 | 2 |
| | F | - | 1 | 1 | 2 |
| Endocrine, nutritional and metabolic diseases | M | 6 | 4 | 5 | 15 |
| | F | - | 11 | 8 | 19 |
| Mental and behavioural disorders | M | 3 | 10 | 19 | 32 |
| | F | 4 | 21 | 30 | 55 |
| Diseases of the nervous system | M | 3 | 13 | 11 | 27 |
| | F | 4 | 5 | 5 | 14 |
| Diseases of the circulatory system | M | 151 | 277 | 242 | 670 |
| | F | 79 | 302 | 368 | 749 |
| Diseases of the respiratory system | M | 27 | 61 | 46 | 134 |
| | F | 16 | 34 | 75 | 125 |
| Diseases of the digestive system | M | 13 | 12 | 12 | 37 |
| | F | 5 | 23 | 26 | 54 |
| Diseases of the skin and subcutaneous tissue | M | - | 3 | 2 | 5 |
| | F | 2 | 3 | 4 | 9 |
| Diseases of the musculoskeletal and connective tissue | M | 1 | 2 | - | 3 |
| | F | 3 | 1 | - | 4 |
| Diseases of the genitourinary system | M | 13 | 17 | 12 | 42 |
| | F | 4 | 17 | 25 | 46 |
| Congenital malformations, deformations and chromosomal abnormalities | M | - | - | - | - |
| | F | 1 | - | - | 1 |
| Symptoms, signs and abnormal clinical and laboratory findings, not elsewhere classified | M | - | - | 3 | 3 |
| | F | 1 | 5 | 5 | 11 |
| External causes of morbidity and mortality | M | 10 | 7 | 7 | 24 |
| | F | 5 | 3 | 10 | 18 |
| All causes | T | 597 | 1,113 | 1,075 | 2,785 |
| | M | 364 | 552 | 439 | 1,355 |
| | F | 233 | 561 | 636 | 1,430 |

Chart 1. Percentage of employed persons aged 60+: 2002-2012

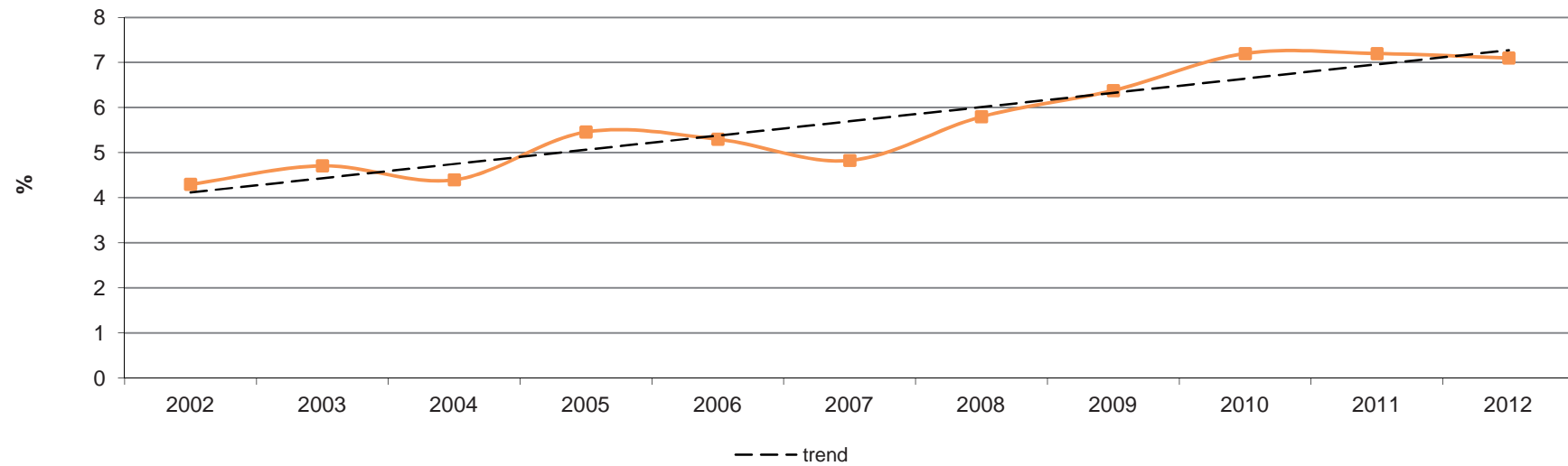


Table 9. Persons aged 60+ attending courses at the University of Malta: 2010-2012

| Course | 2010-2011 | | | 2011-2012 | | | 2012-2013 | | |
|---|-----------|-----------|-----------|-----------|-----------|-----------|-----------|-----------|-----------|
| | Males | Females | Total | Males | Females | Total | Males | Females | Total |
| Undergraduate Certificate or Diploma | 7 | 5 | 12 | 7 | 5 | 12 | 4 | 3 | 7 |
| First Degree | 11 | 5 | 16 | 14 | 6 | 20 | 12 | - | 12 |
| Second Degree or Postgraduate Certificate | 14 | 13 | 27 | 16 | 8 | 24 | 11 | 10 | 21 |
| PhD | 2 | 2 | 4 | 1 | 2 | 3 | 3 | - | 3 |
| Total | 34 | 25 | 59 | 38 | 21 | 59 | 30 | 13 | 43 |

Table 10. Outbound tourists by various characteristics: 2010-2012

| Characteristics | | Under 65 years old | | | 65 and over | | | Total* | | |
|-----------------|--------------------|--------------------|----------------|----------------|---------------|---------------|---------------|----------------|----------------|----------------|
| | | 2010 | 2011 | 2012 | 2010 | 2011 | 2012 | 2010 | 2011 | 2012 |
| Sex | Male | 157,765 | 158,734 | 174,210 | 10,926 | 12,926 | 15,650 | 168,691 | 171,660 | 189,860 |
| | Female | 116,960 | 125,586 | 128,564 | 8,672 | 11,237 | 12,810 | 125,632 | 136,823 | 141,374 |
| Type of trip | Package | 61,912 | 67,646 | 74,136 | 6,423 | 8,693 | 11,193 | 68,335 | 76,339 | 85,329 |
| | Non-package | 212,814 | 216,673 | 228,638 | 13,175 | 15,470 | 17,266 | 225,988 | 232,144 | 245,905 |
| Destination | EU | 233,561 | 253,739 | 261,279 | 16,531 | 21,024 | 24,582 | 250,091 | 274,763 | 285,861 |
| | <i>...of which</i> | | | | | | | | | |
| | France | 17,146 | 13,149 | 15,262 | [957] | [908] | [1,442] | 18,102 | 14,057 | 16,704 |
| | Germany | 14,848 | 15,579 | 17,450 | [1,193] | 1,755 | [1,250] | 16,041 | 17,334 | 18,700 |
| | Italy | 73,461 | 84,739 | 89,400 | 4,324 | 6,208 | 8,327 | 77,786 | 90,947 | 97,726 |
| | UK | 68,465 | 72,928 | 70,479 | 6,530 | 7,318 | 7,823 | 74,995 | 80,246 | 78,302 |
| | Non-EU | 41,165 | 30,581 | 41,495 | 3,067 | 3,139 | 3,877 | 44,232 | 33,720 | 45,372 |
| | Total* | 274,725 | 284,320 | 302,774 | 19,598 | 24,163 | 28,459 | 294,323 | 308,483 | 331,233 |

[] Under represented due to small sample size. Treat figure with caution.

* Totals may not tally due to rounding

Methodological Notes

1. Sources:

Table 1: Demographic Statistics, NSO.

Table 2: Public Registry.

Table 3: Public Finance Data, NSO.

Table 4, Table 5 and Table 6: Statistics on Income and Living Conditions Survey 2011, NSO.

Table 7 and Table 8: Department of Health Information and Research.

Table 9: University of Malta.

Table 10: TOURSTAT Survey, NSO.

Chart 1: Labour Force Survey, NSO.

2. Definitions:

A person is defined as a **dependent child** if s/he is:

- under 18, or,
- 18-24 years old and is inactive and living with at least one parent.

Otherwise, the person is referred to as an adult.

The **Work Intensity (WI)** of the household refers to the number of months that all working-age household members (i.e. persons aged 18-64 who do not fall under the definition of dependent children or retired) have been working during the income reference year (full-time equivalent) as a proportion of the total number of months that could theoretically be worked within the household. Individuals are classified into work intensity categories that range from WI=0 (jobless household) to WI=1 (full work intensity, i.e. all working age household members worked during the whole income reference year).

Material Deprivation:

The following nine questions were asked to all households in order to determine whether they suffered from material deprivation:

- ability to face unexpected financial expenses;
- ability to pay for one week's annual holiday away from home;
- whether they have been in arrears on mortgage or rent payments, utility bills, hire purchase instalments or other loan payments;
- ability to have a meal with meat, chicken, fish or vegetarian equivalent every second day;
- ability to keep home adequately warm in winter;
- own a washing machine;
- own a colour TV;
- own a telephone (including mobile phone);
- own a car.

Persons living in households who were not able to afford at least **three** of the nine deprivation items, are considered to be **materially deprived**.

Persons living in households who were not able to afford at least **four** of the nine deprivation items, are considered to be **severely materially deprived**.

The **at-risk-of-poverty rate** refers to the share of persons with an equivalised disposable income below the 60 per cent of the median of the national equivalised income of persons living in private households, also referred to as the at-risk-of-poverty threshold.

The **at-risk-of-poverty or social exclusion rate** corresponds to the proportion of persons, who fall within at least one of the following three categories:

- persons whose equivalised income falls below the at-risk-of-poverty threshold,
- persons who live in severely materially deprived private households,
- persons who live in private households where the working intensity (WI) is below 20 per cent.

Employment comprises of all persons who, during the week to which the collected data relate, were in one of the following categories: paid employment, self-employed, unpaid family workers or were employees but were not at work for some reason.

A **package trip** consists of a 'tourism product' provided by a tour-operator which elaborates it and sells it directly or through travel agencies. Within a package tour, travellers receive a combination of products associated with a trip, which are made of more than one of the following tourism services: transportation services, accommodation services, food serving services, sight-seeing services, etc.

3. Figures published in this release may be subject to revision.