

3 February 2014 | 1100 hrs | 022/2014

In 2013, the cattle population went down by 2.4 per cent to 15,220 heads when compared to 2012.

## Cattle Census: December 2013

According to data from the Bovine Register, cattle stocks on 1 December 2013 declined by 2.4 per cent, or 373 heads, compared to a year earlier. Bovines less than one year old decreased by 11.2 per cent, while those between one and two years of age and bovines over two years old (excluding cows) advanced by 2.6 and 9.9 per cent respectively. Cows, representing 42.2 per cent of the total cattle stock, registered a marginal increase of 0.1 per cent.

In 2013, 290 holdings were engaged in rearing cattle, of which 126 were involved in milk production. These farms collectively held 14,170 cattle, or 93.1 per cent of the total stock.

The majority of farms had between three and 29 cattle on the holding (41.4 per cent). The total cattle in these farms amounted to 1,188 or 7.8 per cent of the population. In contrast, 20.0 per cent of all cattle farms were considered large, each with at least 100 heads. These farms comprised 10,730 heads, or 70.5 per cent of the total stock.

On a regional level, 10,041 cattle (66.0 per cent) were found on Maltese farms, of which 35.6 per cent or 3,570 heads were located in the South Eastern district. The remaining 5,179 heads, or 34.0 per cent, were found on farms in Gozo and Comino ■

Compiled by:

**Unit B3: Agriculture and  
Fisheries Statistics**

**Directorate B: Business  
Statistics**

Further information on data:

**Mr Ronald TANTI**

T. +356 2599 7333

E. ronald.tanti@gov.mt

Kindly indicate source when quoting from this release.

The advance release calendar may be consulted at [www.nso.gov.mt](http://www.nso.gov.mt)

Issued by: **External Cooperation and Communication Unit, National Statistics Office, Lascaris, Valletta VLT 2000, Malta.**

T. +356 2599 7219 F. +356 2599 7205 E. [nso@gov.mt](mailto:nso@gov.mt)

Table 1. Distribution of cattle population by age and sex

Administrative area	Grand total	Cattle less than 1 year old			Cattle between 1 and 2 years old					Cattle over 2 years old					
		Total cattle less than 1 year old	of which:		Total cattle between 1 and 2 years old	of which:				Total cattle over 2 years old	of which:				
			Males	Females		Males	Females not yet mated	Heifers for slaughter	Other heifers		Males	Heifers for slaughter	Other heifers	Dairy cows	Other cows
<b>MALTA</b>	<b>15,220</b>	<b>4,300</b>	<b>2,076</b>	<b>2,224</b>	<b>3,763</b>	<b>1,232</b>	<b>1,101</b>	<b>146</b>	<b>1,284</b>	<b>7,157</b>	<b>222</b>	<b>136</b>	<b>372</b>	<b>6,333</b>	<b>94</b>
Malta	10,041	2,752	1,329	1,423	2,539	898	710	104	827	4,750	177	100	253	4,129	91
Gozo and Comino	5,179	1,548	747	801	1,224	334	391	42	457	2,407	45	36	119	2,204	3
Southern Harbour	1,269	334	138	196	318	93	98	13	114	617	42	15	32	520	8
Northern Harbour	1,312	392	188	204	317	115	87	11	104	603	13	14	33	535	8
South Eastern	3,570	920	472	448	1,015	424	254	40	297	1,635	83	35	88	1,381	48
Western	2,321	706	368	338	536	179	155	22	180	1,079	28	18	58	963	12
Northern	1,569	400	163	237	353	87	116	18	132	816	11	18	42	730	15
Gozo and Comino	5,179	1,548	747	801	1,224	334	391	42	457	2,407	45	36	119	2,204	3

Chart 1. Distribution of cattle population by age and district

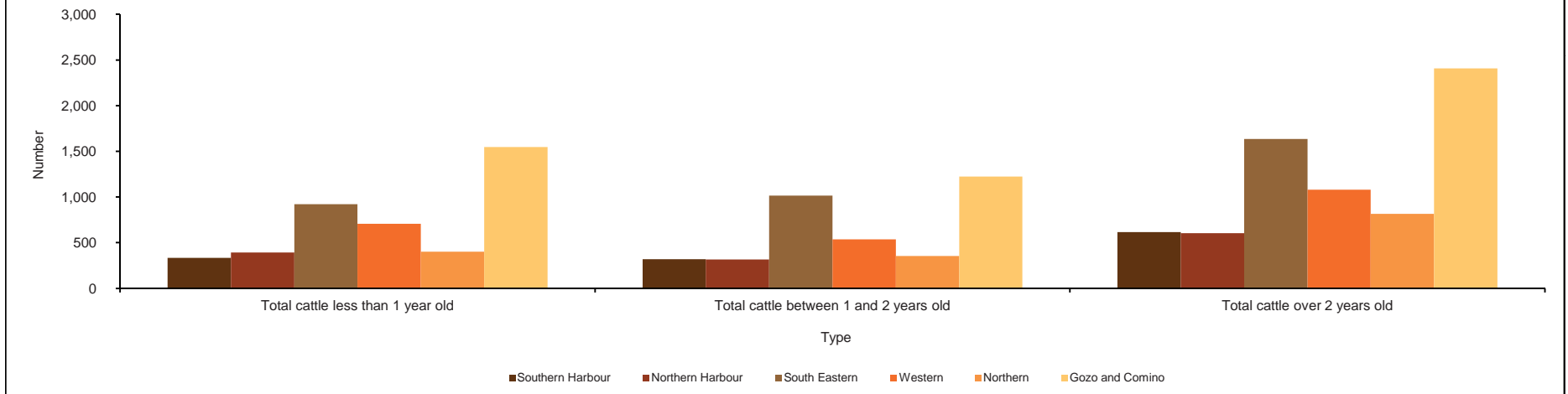


Table 2. Distribution of cattle farms and heads by herd size

Administrative area	Size class of cattle					
	Total	1-2	3-29	30-49	50-99	≥100
<b>MALTA</b>						
<i>Farms</i>	290	60	120	15	37	58
<i>Number of cattle</i>	15,220	89	1,188	584	2,629	10,730
<b>Malta</b>						
<i>Farms</i>	242	56	109	15	27	35
<i>Number of cattle</i>	10,041	83	1,102	584	1,882	6,390
<b>Gozo and Comino</b>						
<i>Farms</i>	48	4	11	0	10	23
<i>Number of cattle</i>	5,179	6	86	0	747	4,340

Table 3. Distribution of dairy farms and dairy cows by size class of dairy cows

Administrative area	Size class of dairy cows					
	Total	≤2	3-29	30-49	50-99	≥100
<b>MALTA</b>						
<i>Farms</i>	126	10	35	31	33	17
<i>Number of dairy cows</i>	6,333	14	644	1,228	2,234	2,213
<b>Malta</b>						
<i>Farms</i>	88	6	30	22	20	10
<i>Number of dairy cows</i>	4,129	7	520	863	1,368	1,371
<b>Gozo and Comino</b>						
<i>Farms</i>	38	4	5	9	13	7
<i>Number of dairy cows</i>	2,204	7	124	365	866	842

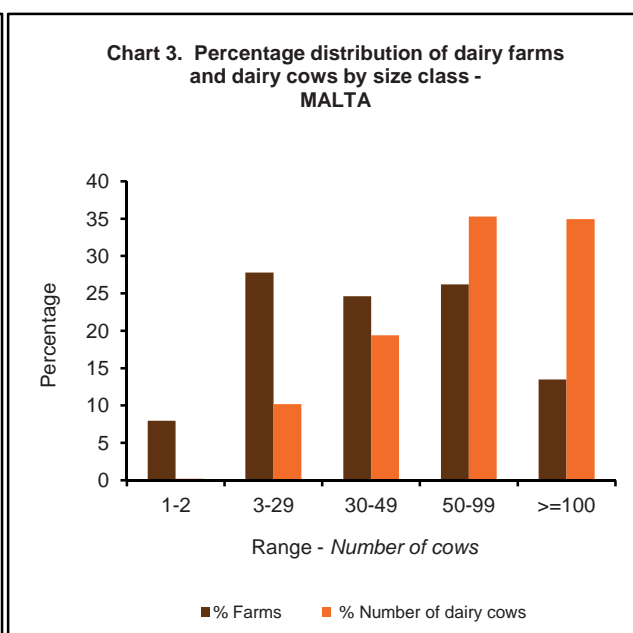
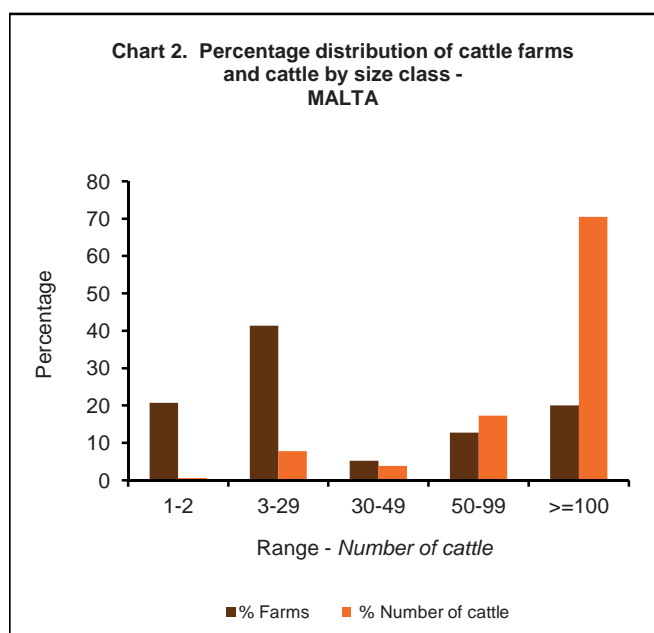


Table 4. Distribution of farms and cattle by type of farm

Administrative area	Total number of cattle farms	of which:		Total number of heads	of which:		
		dairy farms	other farms		dairy cows	other cattle on dairy farms	cattle on non-dairy farms
<b>MALTA</b>	<b>290</b>	<b>126</b>	<b>164</b>	<b>15,220</b>	<b>6,333</b>	<b>7,837</b>	<b>1,050</b>
Malta	242	88	154	10,041	4,129	4,900	1,012
Gozo and Comino	48	38	10	5,179	2,204	2,937	38
Southern Harbour	24	12	12	1,269	520	669	80
Northern Harbour	36	12	24	1,312	535	671	106
South Eastern	103	31	72	3,570	1,381	1,649	540
Western	46	16	30	2,321	963	1,158	200
Northern	33	17	16	1,569	730	753	86
Gozo and Comino	48	38	10	5,179	2,204	2,937	38

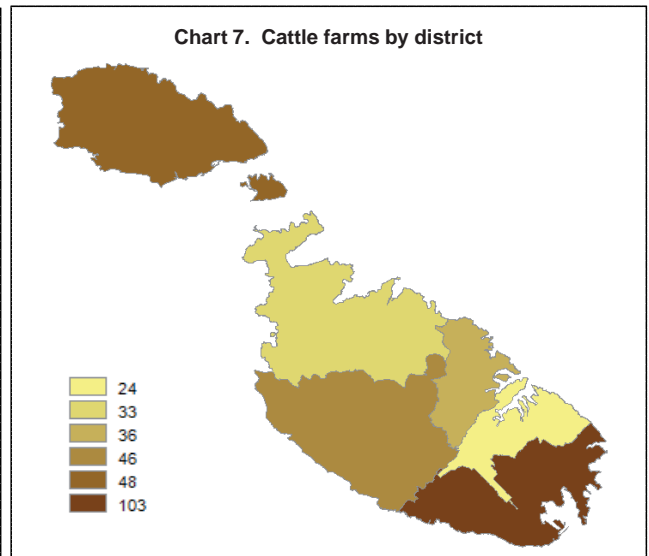
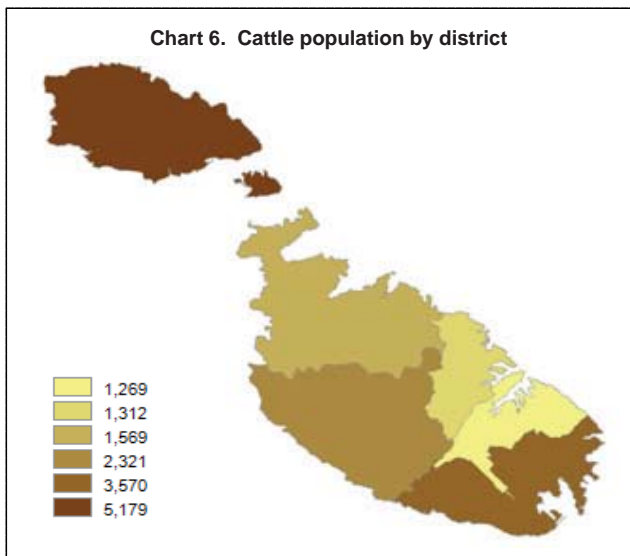
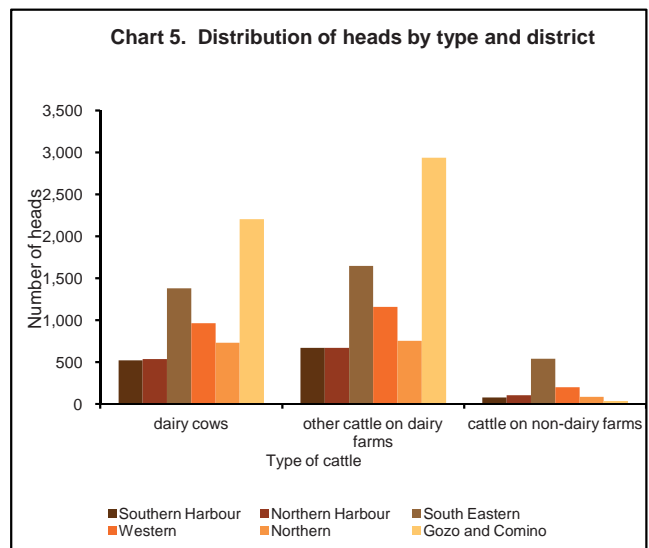
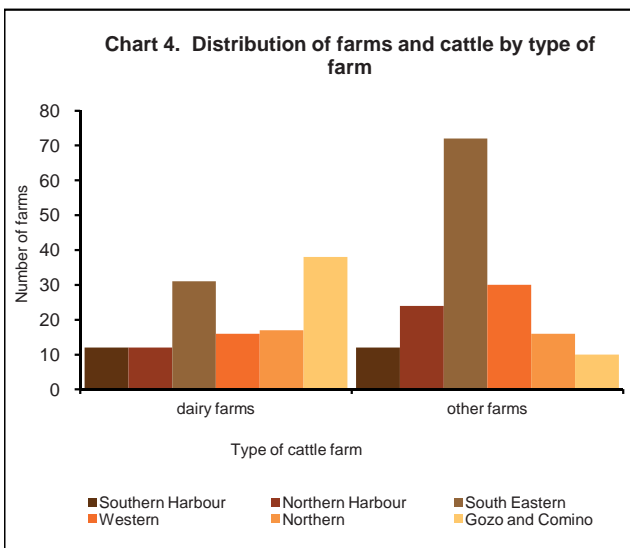


Table 5. Distribution of bovine population by age and administrative area: 2010-2013

Year	Bovines less than 1 year old			Bovines between 1 and 2 years old			Bovines over 2 years old (excluding cows)			Cows			Total bovine population		
	MALTA	Malta	Gozo and Comino	MALTA	Malta	Gozo and Comino	MALTA	Malta	Gozo and Comino	MALTA	Malta	Gozo and Comino	MALTA	Malta	Gozo and Comino
2010	4,372	2,942	1,430	3,334	2,339	995	760	538	222	6,488	4,225	2,263	14,954	10,044	4,910
2011	4,473	3,074	1,399	3,494	2,349	1,145	692	492	200	6,415	4,198	2,217	15,074	10,113	4,961
2012	4,841	3,278	1,563	3,668	2,542	1,126	664	471	193	6,420	4,233	2,187	15,593	10,524	5,069
2013	4,300	2,752	1,548	3,763	2,539	1,224	730	530	200	6,427	4,220	2,207	15,220	10,041	5,179
%11/10	2.3%	4.5%	-2.2%	4.8%	0.4%	15.1%	-8.9%	-8.6%	-9.9%	-1.1%	-0.6%	-2.0%	0.8%	0.7%	1.0%
%12/11	8.2%	6.6%	11.7%	5.0%	8.2%	-1.7%	-4.0%	-4.3%	-3.5%	0.1%	0.8%	-1.4%	3.4%	4.1%	2.2%
%13/12	-11.2%	-16.0%	-1.0%	2.6%	-0.1%	8.7%	9.9%	12.5%	3.6%	0.1%	-0.3%	0.9%	-2.4%	-4.6%	2.2%

Chart 8. Percentage distribution of cattle by category

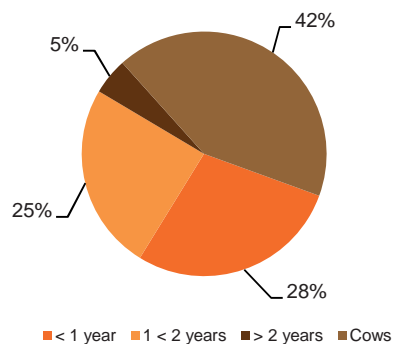


Chart 9. Distribution of cattle by region

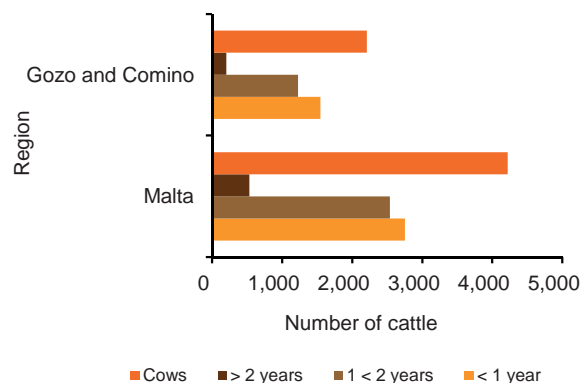


Chart 10. Regional percentage annual change of cattle stock

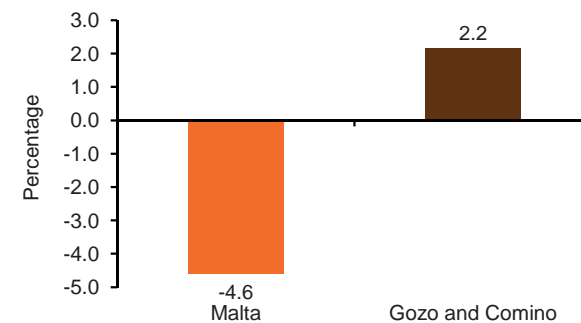


Table 6. Distribution of cattle population by category and administrative area: 2011-2013

Category	2011			2012			2013		
	Administrative area								
	MALTA	Malta	Gozo and Comino	MALTA	Malta	Gozo and Comino	MALTA	Malta	Gozo and Comino
<b>Cattle total</b>	<b>15,074</b>	<b>10,113</b>	<b>4,961</b>	<b>15,593</b>	<b>10,524</b>	<b>5,069</b>	<b>15,220</b>	<b>10,041</b>	<b>5,179</b>
<b>Bovines less than 1 year old</b>	<b>4,473</b>	<b>3,074</b>	<b>1,399</b>	<b>4,841</b>	<b>3,278</b>	<b>1,563</b>	<b>4,300</b>	<b>2,752</b>	<b>1,548</b>
Calves for slaughter	-	-	-	-	-	-	-	-	-
Other calves	4,473	3,074	1,399	4,841	3,278	1,563	4,300	2,752	1,548
Male	2,070	1,468	602	2,262	1,595	667	2,076	1,329	747
Female	2,403	1,606	797	2,579	1,683	896	2,224	1,423	801
<b>Bovines aged between 1 and 2 years old</b>	<b>3,494</b>	<b>2,349</b>	<b>1,145</b>	<b>3,668</b>	<b>2,542</b>	<b>1,126</b>	<b>3,763</b>	<b>2,539</b>	<b>1,224</b>
Male	1,100	782	318	1,276	955	321	1,232	898	334
Female	2,394	1,567	827	2,392	1,587	805	2,531	1,641	890
Female for slaughter	147	102	45	146	102	44	146	104	42
Other female	2,247	1,465	782	2,246	1,485	761	2,385	1,537	848
<b>Bovines aged 2 and over</b>	<b>7,107</b>	<b>4,690</b>	<b>2,417</b>	<b>7,084</b>	<b>4,704</b>	<b>2,380</b>	<b>7,157</b>	<b>4,750</b>	<b>2,407</b>
Male	180	144	36	164	127	37	222	177	45
Female	6,927	4,546	2,381	6,920	4,577	2,343	6,935	4,573	2,362
Heifers	512	348	164	500	344	156	508	353	155
Heifers for slaughter	142	103	39	136	99	37	136	100	36
Other heifers	370	245	125	364	245	119	372	253	119
Cows	6,415	4,198	2,217	6,420	4,233	2,187	6,427	4,220	2,207
Dairy cows	6,308	4,093	2,215	6,320	4,136	2,184	6,333	4,129	2,204
Other cows	107	105	2	100	97	3	94	91	3

## Methodological Notes

1. The cattle census is carried out every year and is in accordance with the Commission Regulation (EC) No. 1165/2008. The reference date is 1 December.
2. Information on the cattle survey has been entirely compiled with information from the Bovine Register, which is under the control of the Veterinary Regulatory Directorate at the Civil Abattoir.
3. Certain categories cannot be directly compiled from the Bovine Register and therefore specific co-efficients based on the census of agriculture of 2010 are used.
4. The data in this release are final and are not normally subject to revision.

European statistics comparable to data in this News Release are available at:

[EUROSTAT Website/Homepage/Statistics Database](#)

Data Navigation Tree

Database by themes

>Agriculture, forestry and fisheries

>Agriculture (agri)

>Agricultural production (apro)

>Livestock and meat (apro\_mt)

> Livestock (apro\_mt\_ls)

>Cattle production - annual data (apro\_mt\_lscatl)

> Structure of rearing (apro\_mt\_str)

> Cattles: total, dairy cow and other cows (apro\_mt\_strcatl)

Tables by themes

>Agriculture, forestry and fisheries

>Agriculture (t\_agri)

>Agricultural production (t\_apro)

>Livestock and meat (t\_apro\_mt)

For further assistance send a request form:

[http://www.nso.gov.mt/adhoc/adhoc\\_contact\\_details.aspx](http://www.nso.gov.mt/adhoc/adhoc_contact_details.aspx)