

During the fourth quarter of 2018, there were two road traffic fatalities.

## Road Traffic Accidents: Q4/2018

The number of reported traffic accidents in the fourth quarter of last year reached 3,512, up by 1.8 per cent over the comparative period in 2017. The Northern Harbour district registered the highest number of road traffic accidents with 1,305 cases or 37.2 per cent of the total. The total number of road traffic accidents that occurred during 2018 amounted to 14,378, down by 4.2 per cent when compared to 2017 (Table 1).

Road traffic casualties decreased by 8.4 per cent to 371 when compared to the same period in 2017. Grievously injured persons consisted of 40 drivers, 16 passengers, 23 pedestrians/others and one cyclist. The injuries suffered by two drivers were fatal (Tables 4-6). The total number of road traffic fatalities during 2018 amounted to 18, one fatality less than those recorded during 2017 (Table 7).

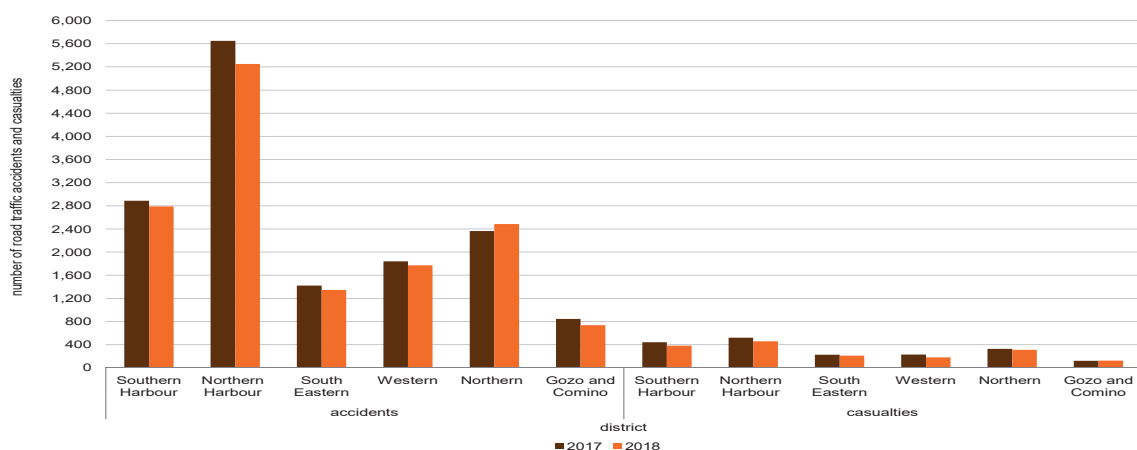
When classified by gender, grievously-injured persons totalled 80, the majority of whom were males (65.0 per cent). The fatalities comprised of two males while the majority of casualties fell in the 26 to 40 age-bracket (Table 8).

The largest number of road traffic casualties (59.3 per cent) involved passenger cars, followed by motorcycles (29.9 per cent) and goods-carrying vehicles (6.7 per cent). The two fatalities involving a driver happened to be motorcyclists. A total of four cyclists were hit by passenger cars, one of whom suffered grievous injuries while the rest suffered slight/insignificant injuries. Another cyclist was hit by a goods-carrying vehicle and suffered slight injuries (Table 9). Road traffic casualties caused by accidents between vehicles topped the list with 67.9 per cent of all road traffic casualties (Table 10).

The highest road traffic casualty rate occurred on Thursdays (59 casualties), while the highest number of road traffic accidents occurred on Tuesdays with 574 cases or 16.3 per cent of the total (Table 11). The time bracket during which most road traffic accidents occurred was between 09:00-11:59 with 775 cases or 22.1 per cent of the total, followed closely by the 12:00-14:59 time bracket with 742 cases. The least number of accidents occurring daily took place between 00:00 and 02:59 (85 cases) (Table 12).

The highest number of road traffic accidents was registered in Birkirkara with 354 cases. Marsa and Ħal Qormi were next in the list with 186 and 173 reported accidents respectively (Chart 6) ■

Chart 1. Road traffic accidents and casualties by district



**Table 1. Total road traffic accidents**

Region/District	January-December		October-December			
	2017	2018	2017	2018	Change	Percentage change
<b>MALTA</b>	<b>15,003</b>	<b>14,378</b>	<b>3,450</b>	<b>3,512</b>	<b>62</b>	<b>1.8</b>
<b>Malta</b>	<b>14,159</b>	<b>13,641</b>	<b>3,300</b>	<b>3,351</b>	<b>51</b>	<b>1.5</b>
Southern Harbour	2,886	2,788	667	725	58	8.7
Northern Harbour	5,650	5,250	1,398	1,305	-93	-6.7
South Eastern	1,420	1,346	294	307	13	4.4
Western	1,839	1,771	428	450	22	5.1
Northern	2,364	2,486	513	564	51	9.9
<b>Gozo and Comino</b>	<b>844</b>	<b>737</b>	<b>150</b>	<b>161</b>	<b>11</b>	<b>7.3</b>

**Table 2. Minor road traffic accidents**

Region/District	January-December		October-December			
	2017	2018	2017	2018	Change	Percentage change
<b>MALTA</b>	<b>13,506</b>	<b>13,026</b>	<b>3,110</b>	<b>3,188</b>	<b>78</b>	<b>2.5</b>
<b>Malta</b>	<b>12,758</b>	<b>12,390</b>	<b>2,971</b>	<b>3,052</b>	<b>81</b>	<b>2.7</b>
Southern Harbour	2,540	2,474	578	637	59	10.2
Northern Harbour	5,209	4,853	1,285	1,211	-74	-5.8
South Eastern	1,242	1,195	254	279	25	9.8
Western	1,665	1,627	393	415	22	5.6
Northern	2,102	2,241	461	510	49	10.6
<b>Gozo and Comino</b>	<b>748</b>	<b>636</b>	<b>139</b>	<b>136</b>	<b>-3</b>	<b>-2.2</b>

**Table 3. Casualties in road traffic accidents**

Region/District	January-December		October-December			
	2017	2018	2017	2018	Change	Percentage change
<b>MALTA</b>	<b>1,873</b>	<b>1,675</b>	<b>405</b>	<b>371</b>	<b>-34</b>	<b>-8.4</b>
<b>Malta</b>	<b>1,751</b>	<b>1,548</b>	<b>392</b>	<b>341</b>	<b>-51</b>	<b>-13.0</b>
Southern Harbour	444	385	107	100	-7	-6.5
Northern Harbour	520	459	130	108	-22	-16.9
South Eastern	227	212	51	31	-20	-39.2
Western	232	181	39	38	-1	-2.6
Northern	328	311	65	64	-1	-1.5
<b>Gozo and Comino</b>	<b>122</b>	<b>127</b>	<b>13</b>	<b>30</b>	<b>17</b>	<b>130.8</b>

Table 4. Injuries sustained by drivers in road traffic accidents by district: October-December

Region/District	2017					2018				
	Fatal	Grievous	Slight	Insignificant	Total	Fatal	Grievous	Slight	Insignificant	Total
<b>MALTA</b>	1	39	198	8	246	2	40	193	10	245
<b>Malta</b>	1	38	193	7	239	2	39	175	9	225
Southern Harbour	-	8	57	-	65	2	7	47	1	57
Northern Harbour	1	17	53	4	75	-	16	45	5	66
South Eastern	-	4	24	3	31	-	3	23	1	27
Western	-	2	26	-	28	-	5	26	-	31
Northern	-	7	33	-	40	-	8	34	2	44
<b>Gozo and Comino</b>	-	1	5	1	7	-	1	18	1	20

Table 5. Injuries sustained by passengers in road traffic accidents by district: October-December

Region/District	2017					2018				
	Fatal	Grievous	Slight	Insignificant	Total	Fatal	Grievous	Slight	Insignificant	Total
<b>MALTA</b>	-	9	60	1	70	-	16	43	5	64
<b>Malta</b>	-	8	58	1	67	-	16	40	4	60
Southern Harbour	-	2	17	1	20	-	5	17	2	24
Northern Harbour	-	4	18	-	22	-	6	10	2	18
South Eastern	-	1	12	-	13	-	-	1	-	1
Western	-	1	2	-	3	-	2	1	-	3
Northern	-	-	9	-	9	-	3	11	-	14
<b>Gozo and Comino</b>	-	1	2	-	3	-	-	3	1	4

Table 6. Injuries sustained by pedestrians/cyclists/others in road traffic accidents by district: October-December

Region/District	2017					2018				
	Fatal	Grievous	Slight	Insignificant	Total	Fatal	Grievous	Slight	Insignificant	Total
<b>MALTA</b>	1	27	59	2	89	-	24	35	3	62
<b>Malta</b>	1	25	58	2	86	-	22	32	2	56
Southern Harbour	-	8	14	-	22	-	7	12	-	19
Northern Harbour	1	7	23	2	33	-	11	11	2	24
South Eastern	-	2	5	-	7	-	0	3	-	3
Western	-	4	4	-	8	-	2	2	-	4
Northern	-	4	12	-	16	-	2	4	-	6
<b>Gozo and Comino</b>	-	2	1	-	3	-	2	3	1	6
...of which cyclists	-	4	9	-	13	-	1	3	1	5

Note: The category "Other" refers to horsecabs and any other road traffic unit not described above.

Table 7. Road traffic accidents and fatalities by month: January-December

Month	2017		2018	
	Accidents	Fatalities	Accidents	Fatalities
January	1,179	1	1,097	1
February	1,065	1	1,069	-
March	1,310	4	1,207	3
April	1,288	-	1,204	5
May	1,410	2	1,383	1
June	1,395	1	1,250	3
July	1,384	1	1,350	1
August	1,353	7	1,231	2
September	1,169	-	1,075	-
October	1,195	1	1,208	1
November	1,115	1	1,101	-
December	1,140	-	1,203	1
<b>Total</b>	<b>15,003</b>	<b>19</b>	<b>14,378</b>	<b>18</b>

Chart 2. Road traffic accidents and fatalities by month

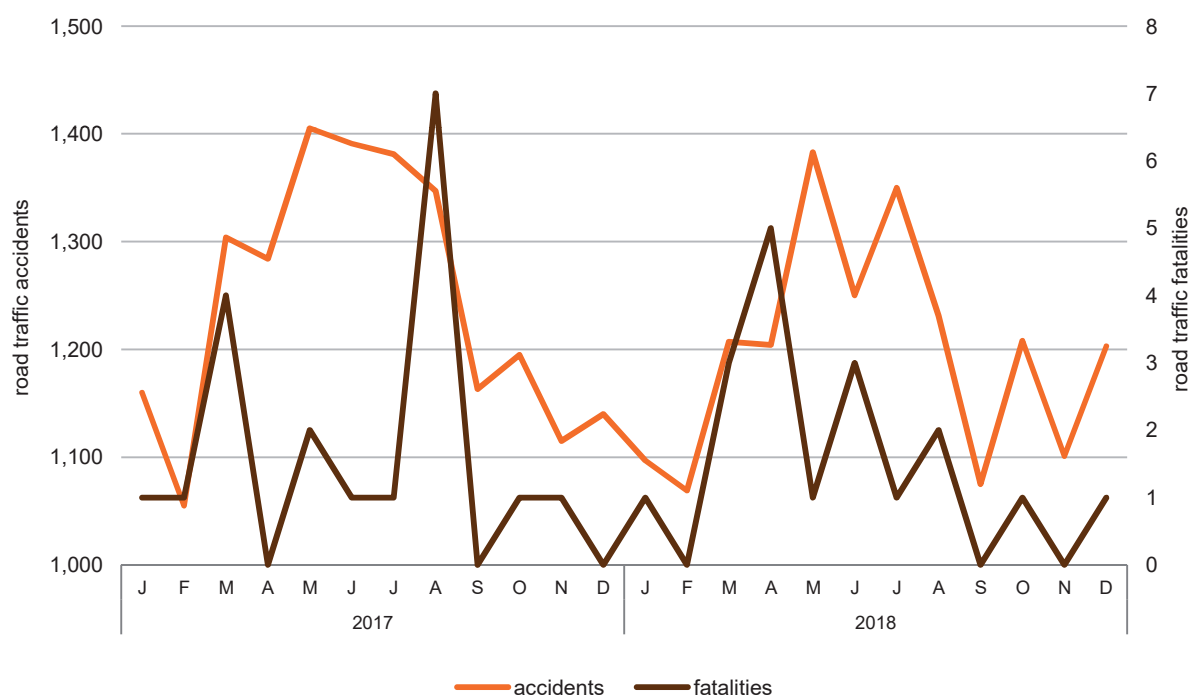
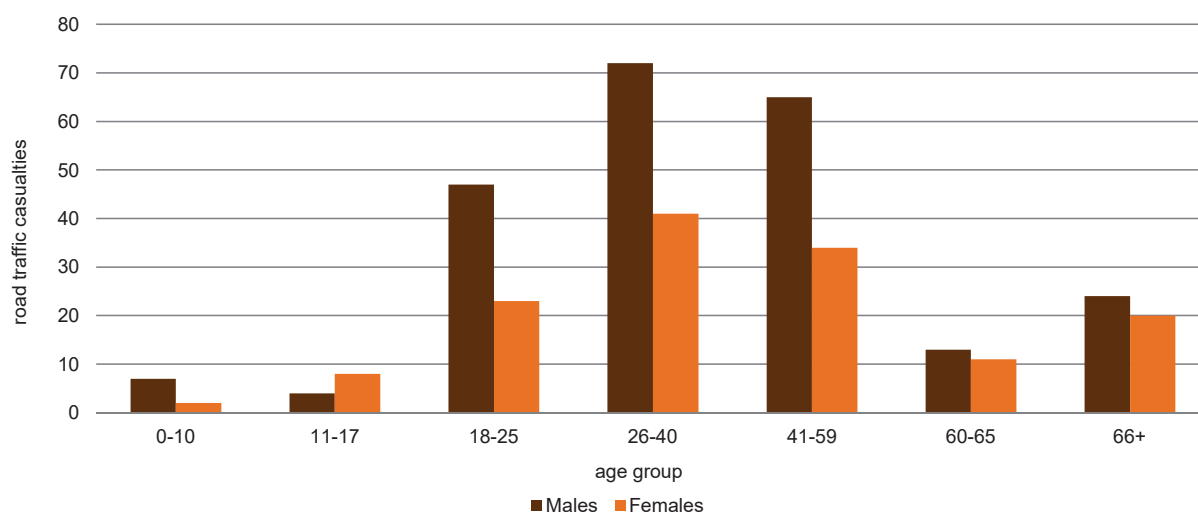


Table 8. Road traffic casualties by type of injury, age group and gender: October-December

Age group	2017 Total	2018				
		Fatal	Grievous	Slight	Insignificant	Total
<b>Males</b>						
0-10	44	-	1	6	-	7
11-17	27	-	1	3	-	4
18-25	210	1	7	36	3	47
26-40	324	-	13	56	3	72
41-59	320	1	21	42	1	65
60-65	57	-	3	10	-	13
66+	121	-	6	17	1	24
<b>Total</b>	<b>1,103</b>	<b>2</b>	<b>52</b>	<b>170</b>	<b>8</b>	<b>232</b>
<b>Females</b>						
0-10	35	-	-	1	1	2
11-17	42	-	6	-	2	8
18-25	126	-	5	16	2	23
26-40	197	-	4	36	1	41
41-59	198	-	5	27	2	34
60-65	44	-	1	8	2	11
66+	111	-	7	13	-	20
<b>Total</b>	<b>753</b>	<b>-</b>	<b>28</b>	<b>101</b>	<b>10</b>	<b>139</b>
<b>Unknown</b>						
0-10	2	-	-	-	-	-
11-17	-	-	-	-	-	-
18-25	5	-	-	-	-	-
26-40	5	-	-	-	-	-
41-59	4	-	-	-	-	-
60-65	-	-	-	-	-	-
66+	1	-	-	-	-	-
unknown	-	-	-	-	-	-
<b>Total</b>	<b>17</b>	<b>-</b>	<b>-</b>	<b>-</b>	<b>-</b>	<b>-</b>
<b>Total</b>						
0-10	81	-	1	7	1	9
11-17	69	-	7	3	2	12
18-25	341	1	12	52	5	70
26-40	526	-	17	92	4	113
41-59	522	1	26	69	3	99
60-65	101	-	4	18	2	24
66+	233	-	13	30	1	44
<b>Total</b>	<b>1,873</b>	<b>2</b>	<b>80</b>	<b>271</b>	<b>18</b>	<b>371</b>

Chart 3. Road traffic casualties by gender and age group: October-December 2018



**Table 9. Road traffic casualties by road traffic unit, vehicle type and injury: October-December**

Road traffic unit	Vehicle type	2018				
		Fatal	Grievous	Slight	Insignificant	Total
Driver	Minibus	-	-	2	-	2
	Route bus	-	-	1	-	1
	Motorcycle	2	28	67	3	100
	Quad & ATV	-	-	2	-	2
	Passenger car	-	12	110	7	129
	Goods-carrying vehicle	-	-	10	-	10
	Special purpose vehicle	-	-	1	-	1
Passenger	Route bus	-	1	1	-	2
	Motorcycle	-	1	7	-	8
	Quad & ATV	-	-	1	-	1
	Passenger car	-	14	32	5	51
	Goods-carrying vehicle	-	-	2	-	2
Pedestrian	Motorcycle	-	3	-	-	3
	Passenger car	-	14	20	1	35
	Goods-carrying vehicle	-	5	6	1	12
	Special purpose vehicle	-	-	1	-	1
	Unknown vehicle	-	1	4	-	5
Cyclist	Passenger car	-	1	2	1	4
	Goods-carrying vehicle	-	-	1	-	1
Other	Passenger car	-	-	1	-	1
<b>Total</b>		<b>2</b>	<b>80</b>	<b>271</b>	<b>18</b>	<b>371</b>

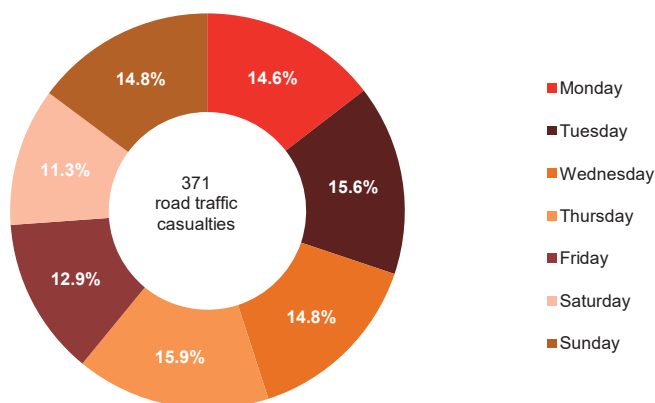
**Table 10. Road traffic casualties by road traffic unit, type of accident and injury: October-December**

Road traffic unit	Accident type	2018				
		Fatal	Grievous	Slight	Insignificant	Total
Driver	Vehicle with vehicle	1	22	167	10	200
	Vehicle with pedestrian	-	3	1	-	4
	Vehicle with property	1	14	24	-	39
	Vehicle hit and run	-	1	1	-	2
Passenger	Vehicle with vehicle	-	10	38	4	52
	Vehicle with property	-	6	5	1	12
Pedestrian	Vehicle with pedestrian	-	23	29	2	54
	Vehicle hit and run	-	-	2	-	2
Cyclist	Vehicle with bicycle	-	1	3	1	5
Other	Vehicle with bicycle	-	-	1	-	1
<b>Total</b>		<b>2</b>	<b>80</b>	<b>271</b>	<b>18</b>	<b>371</b>

**Table 11. Road traffic casualties and accidents by day of the week: October-December 2018**

	Monday	Tuesday	Wednesday	Thursday	Friday	Saturday	Sunday	Total
Road traffic casualties	54	58	55	59	48	42	55	<b>371</b>
Road traffic accidents	540	574	563	521	529	486	299	<b>3,512</b>
Casualties-to-accidents ratio (%)	10.0	10.1	9.8	11.3	9.1	8.6	18.4	<b>10.6</b>

**Chart 4. Road traffic casualties by day of the week: October-December 2018**



**Table 12. Road traffic accidents by day of the week and time bracket: October-December 2018**

Time bracket	Monday	Tuesday	Wednesday	Thursday	Friday	Saturday	Sunday	Total
00:00 - 02:59	7	2	11	7	5	23	30	<b>85</b>
03:00 - 05:59	8	9	6	4	10	28	22	<b>87</b>
06:00 - 08:59	101	101	101	102	81	55	24	<b>565</b>
09:00 - 11:59	115	126	119	122	127	121	45	<b>775</b>
12:00 - 14:59	123	116	136	101	112	97	57	<b>742</b>
15:00 - 17:59	116	118	106	119	105	83	63	<b>710</b>
18:00 - 20:59	50	73	71	44	72	43	44	<b>397</b>
21:00 - 23:59	20	29	13	22	17	36	14	<b>151</b>
<b>Total</b>	<b>540</b>	<b>574</b>	<b>563</b>	<b>521</b>	<b>529</b>	<b>486</b>	<b>299</b>	<b>3,512</b>

**Chart 5. Road traffic accidents by day of the week and time of day: October-December 2018**

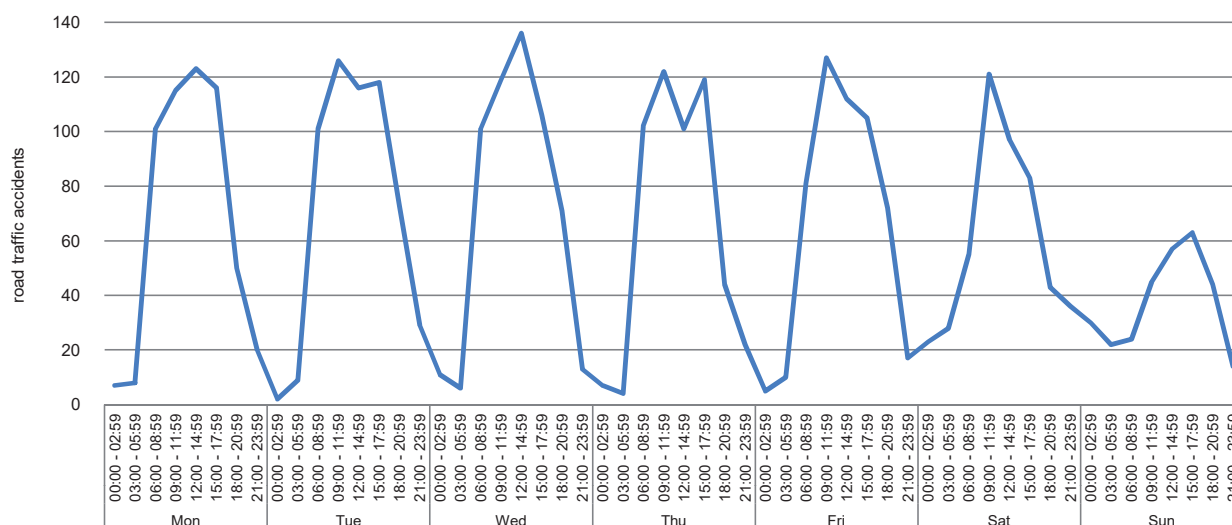


Table 13. Road traffic accidents by district/locality ...

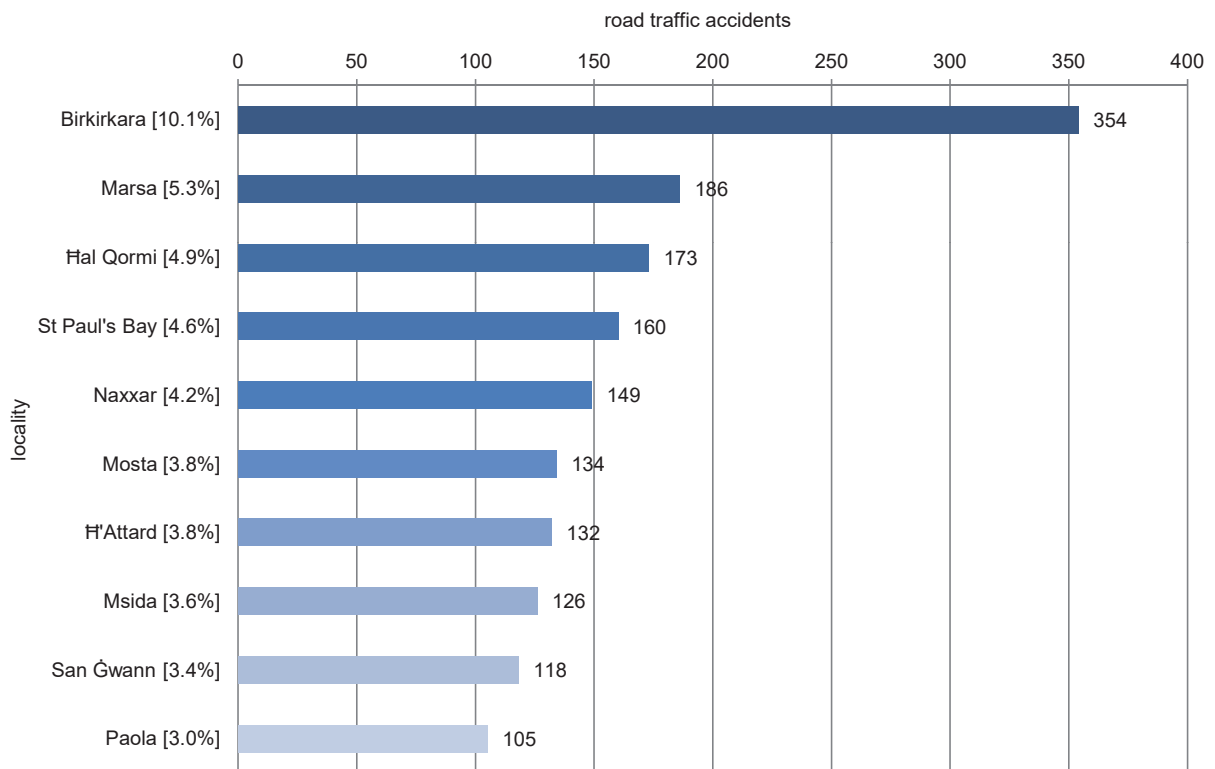
Locality	January-December		October-December		Change
	2017	2018	2017	2018	
<b>Southern Harbour</b>	<b>2,886</b>	<b>2,788</b>	<b>667</b>	<b>725</b>	<b>58</b>
Cospicua	111	93	30	26	-4
Fgura	244	254	58	68	10
Floriana	189	195	42	46	4
Hal Luqa	357	396	101	91	-10
Hal Tarxien	245	267	64	66	2
Haż-Żabbar	325	247	51	65	14
Kalkara	49	28	11	6	-5
Marsa	566	643	124	186	62
Paola	455	355	106	105	-1
Santa Luċija	28	34	6	9	3
Senglea	24	27	8	2	-6
Valletta	221	168	54	39	-15
Vittoriosa	54	53	8	11	3
Xghajra	18	28	4	5	1
<b>Northern Harbour</b>	<b>5,650</b>	<b>5,250</b>	<b>1,398</b>	<b>1,305</b>	<b>-93</b>
Birkirkara	1,250	1,261	329	354	25
Gżira	396	326	90	80	-10
Hal Qormi	722	773	188	173	-15
Hamrun	343	340	94	88	-6
Msida	571	452	143	126	-17
Pembroke	99	86	24	19	-5
San Ġwann	488	450	126	118	-8
Santa Venera	294	253	74	64	-10
St Julian's	455	382	96	88	-8
Swieqi	232	248	59	67	8
Ta' Xbiex	112	71	20	10	-10
Tal-Pietà	168	174	48	45	-3
Tas-Sliema	520	434	107	73	-34
<b>South Eastern</b>	<b>1,420</b>	<b>1,346</b>	<b>294</b>	<b>307</b>	<b>13</b>
Birżebbuġa	195	220	37	50	13
Gudja	203	208	51	43	-8
Hal Ghaxaq	86	73	19	21	2
Hal Kirkop	68	47	18	15	-3
Hal Safi	45	32	10	7	-3
Marsaskala	204	176	44	39	-5
Marsaxlokk	70	58	20	12	-8
Mqabba	48	40	7	9	2
Qrendi	49	37	3	8	5
Żejtun	313	309	58	67	9
Żurrieq	139	146	27	36	9
<b>Western</b>	<b>1,839</b>	<b>1,771</b>	<b>428</b>	<b>450</b>	<b>22</b>
Had-Dingli	57	44	12	8	-4
Hal Balzan	160	172	42	36	-6
Hal Lija	199	166	46	43	-3
H'Attard	467	486	112	132	20
Haż-Żebbuġ	332	309	66	78	12
Iklin	95	88	31	26	-5
Mdina	28	28	4	5	1
Mtarfa	24	84	6	6	-
Rabat	330	284	78	89	11
Siġġiewi	147	110	31	27	-4
<b>Northern</b>	<b>2,364</b>	<b>2,486</b>	<b>513</b>	<b>564</b>	<b>51</b>
Hal Gharghur	82	103	16	25	9
Mellieħa	364	373	63	63	-
Mġarr	123	139	40	33	-7
Mosta	636	577	146	134	-12
Naxxar	536	575	117	149	32
St Paul's Bay	623	719	131	160	29



... Table 13. Road traffic accidents by locality

Locality	January-December		October-December		
	2017	2018	2017	2018	Change
<b>Gozo and Comino</b>	<b>844</b>	<b>737</b>	<b>150</b>	<b>161</b>	<b>11</b>
Fontana	11	18	2	4	2
Għajnsielem	108	74	28	15	-13
Għarb	36	27	3	6	3
Għasri	8	8	1	2	1
Munxar	29	20	5	1	-4
Nadur	40	43	8	7	-1
Qala	20	25	6	6	-
San Lawrenz	8	2	1	-	-1
Ta' Kerċem	8	7	2	1	-1
Ta' Sannat	32	18	4	5	1
Victoria	259	253	48	66	18
Xagħra	82	65	9	11	2
Xewkija	150	127	27	30	3
Żebbuġ	53	50	6	7	1
<b>Total</b>	<b>15,003</b>	<b>14,378</b>	<b>3,450</b>	<b>3,512</b>	<b>62</b>

Chart 6. Top 10 localities for road traffic accidents: October-December 2018



## Methodological Notes

1. Road traffic accidents data are compiled from administrative information provided by the Police Department and the Malta Insurance Association (Guard and Warden Services Limited).
2. Total road traffic accidents comprise of the road traffic accidents involving casualties (Police reports) and the minor road traffic accidents without casualties (Police and Warden reports).
3. Minor road traffic accidents which are not reported, or those reported to Insurance Agencies by means of the Traffic Accident Form (i.e. no Police or Wardens are called on the accident scene and those involved in the accident decide to settle by filling in the form) are not accounted for.
4. Minor road traffic accidents refer to accidents assessed by the Wardens and/or the Police, involving at least one vehicle and in which no persons are injured.
5. Road traffic accidents involving injury consist of the total road traffic accidents (Table 1) less the minor road traffic accidents (Table 2).
6. Insignificant injury is determined by the Police as a very minimal injury (e.g. bruise, scratch, etc.) or shock due to accident, which in most cases needs very basic treatment or for which no treatment is necessary.
7. The type of casualty (slight or grievous) is determined by the Health Department. The definitions for deaths caused by road traffic accidents refer to the European Conference for Ministers of Transport (ECMT) and United Nations Economic Commission for Europe (UNECE). In both cases, some form of treatment is given and a medical certificate is provided.
8. UNECE defines road fatal injury as: "Any person who was killed outright or who died within 30 days as a result of the accident".
9. The casualty-to-accident ratio indicates the risk level of suffering an injury in an accident. Therefore, a higher percentage rate means that the corresponding (by day of the week) accidents are more serious (i.e. more persons are injured).
10. Data is provisional and may be subject to revision.
11. More information relating to this news release may be accessed at:  
Sources and Methods: [https://nso.gov.mt/en/nso/Sources\\_and\\_Methods/Unit\\_B3/Environment\\_Energy\\_Transport\\_and\\_Agriculture\\_Statistics/Pages/Road-Traffic-Accidents.aspx](https://nso.gov.mt/en/nso/Sources_and_Methods/Unit_B3/Environment_Energy_Transport_and_Agriculture_Statistics/Pages/Road-Traffic-Accidents.aspx)  
Statistical Concepts: <http://nso.gov.mt/metadata/concepts.aspx>
12. References to this news release are to be cited appropriately.
13. A detailed news release calendar is available on: [https://nso.gov.mt/en/News\\_Releases/Release\\_Calendar/Pages/News-Release-Calendar.aspx](https://nso.gov.mt/en/News_Releases/Release_Calendar/Pages/News-Release-Calendar.aspx)