

In February 2018, registered full-time employment increased by 6.5 per cent while part-time employment as a primary job increased by 2.8 per cent when compared to the corresponding month in 2017.

Gainfully Occupied Population: January-February 2018

Administrative data provided by Jobsplus show that, over a period of one year, the labour supply (excluding part-timers, see methodological note 5) increased by 6.0 per cent, reaching 201,992. This was mainly attributed to a year on year increase in the full-time gainfully occupied population (12,279) and a decline in registered unemployment (761) (Table 1).

Registered full-time employment

In February 2018, administrative and support service activities (NACE 77-82) and arts, entertainment and recreation (NACE 90-93) contributed mostly to the increase in employment with 2,795 and 1,373 respectively, compared to February 2017 (Table 1). Registered full-time employment in the private sector went up by 10,990 persons to 153,361. Public sector full-time employment increased by 1,289 persons to 46,626 (Table 2).

The number of persons registered as full-time self-employed rose by 829 when compared to February 2017, while the number of persons registered as employees increased by 11,450. Full-time employment for males and females went up by 5.4 per cent and 8.5 per cent respectively over 2017 levels (Table 2).

Registered part-time employment

Registered part-time employment in February 2018 went up by 5.5 per cent when compared to a year earlier. The sectors that contributed most to the overall increase were professional, scientific and technical activities (NACE 69-75, 608) and wholesale and retail trade; repair of motor vehicles and motorcycles (NACE 45-47, 527). On the other hand, administrative and support services activities (NACE 77-82) registered a drop of 227 when compared to February 2017 (Table 3).

The number of part-timers who also held a full-time job amounted to 26,363 up by 9.2 per cent when compared to the corresponding month in 2017. Employed persons whose part-time job was their primary occupation totalled 34,879, up by 2.8 per cent when compared to 2017 (Table 4) ■

Chart 1. Annual percentage change in full-time and part-time employment

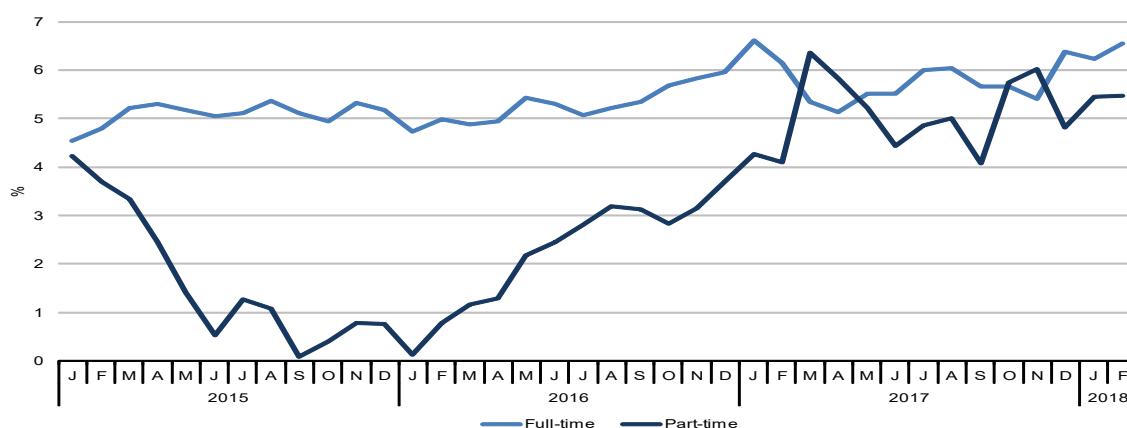


Table 1. Full-time employment classified by period and economic activity ...

NACE division	Economic activity	Average 2016	Average 2017 (Revised)	December 2017 (Revised)	January 2017 (Revised)	January 2018	February 2017 (Revised)	February 2018
01-03	Agriculture, forestry and fishing	2,281	2,297	2,338	2,289	2,359	2,304	2,357
01	Crop and animal production, hunting and related service activities	1,698	1,691	1,713	1,699	1,721	1,710	1,721
02	Forestry and logging	-	-	-	-	-	-	-
03	Fishing and aquaculture	583	606	625	590	638	594	636
05-09	Mining and quarrying	378	367	374	364	380	364	377
05	Mining of coal and lignite	-	-	-	-	-	-	-
06	Extraction of crude petroleum and natural gas	-	-	-	-	-	-	-
07	Mining of metal ores	-	-	-	-	-	-	-
08	Other mining and quarrying	172	176	181	171	186	169	187
09	Mining support service activities	206	191	193	193	194	195	190
10-33	Manufacturing	20,874	21,071	21,343	20,980	21,540	21,047	21,653
10	Manufacture of food products	2,675	2,679	2,691	2,672	2,723	2,693	2,722
11	Manufacture of beverages	874	885	892	879	901	875	900
12	Manufacture of tobacco products	16	15	15	16	15	15	15
13	Manufacture of textiles	330	338	354	332	357	330	362
14	Manufacture of wearing apparel	216	141	138	147	136	143	135
15	Manufacture of leather and related products	27	20	15	25	15	25	16
16	Manufacture of wood and of products of wood and cork, except furniture; manufacture of articles of straw and plaiting materials	344	340	333	350	332	344	335
17	Manufacture of paper and paper products	206	218	219	215	217	211	219
18	Printing and reproduction of recorded media	1,240	1,253	1,434	1,236	1,471	1,235	1,517
19	Manufacture of coke and refined petroleum products	10	10	10	8	10	9	10
20	Manufacture of chemicals and chemical products	306	310	310	309	314	312	317
21	Manufacture of basic pharmaceutical products and pharmaceutical preparations	1,164	1,074	1,057	1,115	1,051	1,107	1,005
22	Manufacture of rubber and plastic products	1,707	1,760	1,741	1,751	1,746	1,758	1,762
23	Manufacture of other non-metallic mineral products	1,081	1,035	1,019	1,053	1,022	1,056	1,030
24	Manufacture of basic metals	166	195	234	166	249	173	254
25	Manufacture of fabricated metal products, except machinery and equipment	1,216	1,220	1,194	1,259	1,186	1,264	1,188
26	Manufacture of computer, electronic and optical products	2,188	2,243	2,258	2,197	2,274	2,206	2,301
27	Manufacture of electrical equipment	514	515	507	528	509	526	516
28	Manufacture of machinery and equipment n.e.c.	493	505	508	481	519	495	522
29	Manufacture of motor vehicles, trailers and semi-trailers	1,122	1,112	1,117	1,105	1,124	1,109	1,140
30	Manufacture of other transport equipment	106	141	170	123	170	130	170
31	Manufacture of furniture	1,139	1,121	1,127	1,122	1,153	1,130	1,148
32	Other manufacturing	2,239	2,366	2,362	2,342	2,376	2,356	2,400

... Table 1. Full-time employment classified by period and economic activity

NACE division	Economic activity	Average 2016	Average 2017 (Revised)	December 2017 (Revised)	January 2017 (Revised)	January 2018	February 2017 (Revised)	February 2018
33	Repair and installation of machinery and equipment	1,495	1,575	1,638	1,549	1,670	1,545	1,669
35	Electricity, gas, steam and air conditioning supply	59	117	135	93	134	92	140
36-39	Water supply; sewerage, waste management and remediation activities	1,441	1,590	1,635	1,461	1,635	1,451	1,670
36	Water collection, treatment and supply	1,017	1,171	1,206	1,019	1,205	1,015	1,235
37	Sewerage	7	9	8	9	7	9	7
38	Waste collection, treatment and disposal activities; materials recovery	398	379	380	401	381	396	383
39	Remediation activities and other waste management services	19	31	41	32	42	31	45
41-43	Construction	10,842	11,178	11,373	11,084	11,451	11,081	11,564
41	Construction of buildings	4,189	4,332	4,420	4,312	4,455	4,281	4,520
42	Civil engineering	859	906	901	913	920	903	920
43	Specialised construction activities	5,794	5,940	6,052	5,859	6,076	5,897	6,124
45-47	Wholesale and retail trade; repair of motor vehicles and motorcycles	25,614	26,316	26,511	26,207	26,571	26,242	26,620
45	Wholesale and retail trade and repair of motor vehicles and motorcycles	2,420	2,432	2,455	2,419	2,446	2,421	2,454
46	Wholesale trade, except of motor vehicles and motorcycles	9,544	9,972	10,084	9,828	10,148	9,871	10,183
47	Retail trade, except of motor vehicles and motorcycles	13,650	13,912	13,972	13,960	13,977	13,950	13,983
49-53	Transportation and storage	9,838	10,156	10,402	9,924	10,390	9,966	10,441
49	Land transport and transport via pipelines	3,423	3,508	3,480	3,472	3,503	3,507	3,507
50	Water transport	458	463	463	454	465	455	467
51	Air transport	1,338	1,289	1,369	1,246	1,392	1,252	1,420
52	Warehousing and support activities for transportation	3,919	4,102	4,216	4,016	4,150	3,997	4,166
53	Postal and courier activities	700	794	874	736	880	755	881
55-56	Accommodation and food service activities	11,404	12,294	12,654	11,767	12,761	11,798	12,923
55	Accommodation	5,496	5,685	5,742	5,472	5,740	5,464	5,789
56	Food and beverage service activities	5,908	6,609	6,912	6,295	7,021	6,334	7,134
58-63	Information and communication	6,829	7,374	7,399	7,105	7,444	7,210	7,523
58	Publishing activities	546	610	656	584	641	612	647
59	Motion picture, video and television programme production, sound recording and music publishing activities	310	356	318	299	356	348	370
60	Programming and broadcasting activities	244	247	246	247	249	247	251
61	Telecommunications	1,677	1,684	1,718	1,660	1,720	1,666	1,730
62	Computer programming, consultancy and related activities	3,302	3,677	3,641	3,527	3,647	3,548	3,683
63	Information service activities	750	800	820	788	831	789	842
64-66	Financial and insurance activities	8,987	9,587	9,973	9,306	10,059	9,402	10,108
64	Financial service activities, except insurance and pension funding	6,381	6,812	7,114	6,571	7,168	6,671	7,203
65	Insurance, reinsurance and pension funding, except compulsory social security	868	913	952	902	951	902	951

... Table 1. Full-time employment classified by period and economic activity

NACE division	Economic activity	Average 2016	Average 2017 (Revised)	December 2017 (Revised)	January 2017 (Revised)	January 2018	February 2017 (Revised)	February 2018
66	Activities auxiliary to financial services and insurance activities	1,738	1,862	1,907	1,833	1,940	1,829	1,954
68	Real estate activities	1,501	1,644	1,706	1,606	1,736	1,614	1,745
69-75	Professional, scientific and technical activities	11,017	12,160	12,693	11,657	12,850	11,776	12,953
69	Legal and accounting activities	3,551	3,879	3,885	3,748	3,873	3,786	3,886
70	Activities of head offices; management consultancy activities	2,973	3,419	3,841	3,118	3,997	3,155	4,084
71	Architectural and engineering activities; technical testing and analysis	1,992	2,145	2,208	2,113	2,212	2,133	2,218
72	Scientific research and development	30	37	40	32	42	33	40
73	Advertising and market research	1,683	1,831	1,851	1,822	1,874	1,853	1,869
74	Other professional, scientific and technical activities	696	750	765	727	744	722	749
75	Veterinary activities	92	99	103	97	108	94	107
77-82	Administrative and support service activities	15,204	17,158	18,272	16,064	18,693	16,105	18,900
77	Rental and leasing activities	1,262	1,330	1,383	1,284	1,405	1,306	1,417
78	Employment activities	3,797	4,185	4,307	4,068	4,827	4,087	4,824
79	Travel agency, tour operator and other reservation service and related activities	1,157	1,211	1,225	1,167	1,215	1,177	1,233
80	Security and investigation activities	2,368	2,739	2,886	2,356	2,893	2,403	2,910
81	Services to buildings and landscape activities	3,618	4,312	4,903	3,947	4,712	3,937	4,775
82	Office administrative, office support and other business support activities	3,002	3,381	3,568	3,242	3,641	3,195	3,741
84	Public administration and defence; compulsory social security	13,096	14,073	14,495	13,910	14,470	13,872	14,493
85	Education	16,279	16,802	17,165	16,592	17,172	16,615	17,210
86-88	Human health and social work activities	14,763	15,029	15,213	14,584	15,329	14,606	15,419
86	Human health activities	8,995	8,614	8,739	8,608	8,779	8,603	8,799
87	Residential care activities	4,386	4,906	5,070	4,660	5,145	4,674	5,219
88	Social work activities without accommodation	1,382	1,509	1,404	1,316	1,405	1,329	1,401
90-93	Arts, entertainment and recreation	6,918	8,256	8,906	7,733	9,049	7,834	9,207
90	Creative, arts and entertainment activities	477	565	609	520	620	521	627
91	Libraries, archives, museums and other cultural activities	394	399	395	397	401	406	405
92	Gambling and betting activities	5,247	6,419	6,985	5,965	7,107	6,060	7,226
93	Sports activities and amusement and recreation activities	800	873	917	851	921	847	949
94-96	Other service activities	3,595	3,863	3,973	3,720	4,012	3,760	4,065
94	Activities of membership organisations	759	810	824	784	833	805	847
95	Repair of computers and personal and household goods	283	306	315	284	321	296	321
96	Other personal service activities	2,553	2,747	2,834	2,652	2,858	2,659	2,897
97-98	Activities of households as employers; undifferentiated goods- and services-producing activities of households for own use	49	118	407	341	406	345	400
97 ¹	Activities of households as employers of domestic personnel	49	118	406	341	405	345	399

... Table 1. Full-time employment classified by period and economic activity

NACE division	Economic activity	Average 2016	Average 2017 (Revised)	December 2017 (Revised)	January 2017 (Revised)	January 2018	February 2017 (Revised)	February 2018
98	Undifferentiated goods- and services-producing activities of private households for own use	-	-	1	-	1	-	1
99	Activities of extraterritorial organisations and bodies	223	222	219	226	220	224	219
01-99	Total Gainfully Occupied (including apprentices)	181,192	191,672	197,186	187,013	198,661	187,708	199,987
	Registered Unemployed	3,566	2,500	2,167	2,889	2,000	2,766	2,005
	Part I	3,266	2,271	2,010	2,638	1,826	2,522	1,821
	Part II	300	229	157	251	174	244	184
	Labour Supply (excluding part-time employment)	184,758	194,172	199,353	189,902	200,661	190,474	201,992

¹ Refer to methodological note 6

Table 2. Full-time employment classified by period, economic activity and category ...

NACE division	Economic activity	Category	Average 2016	Average 2017 (Revised)	December 2017 (Revised)	January 2017 (Revised)	January 2018	February 2017 (Revised)	February 2018
01-03	Agriculture, forestry and fishing	Private Sector	1,915	1,927	1,953	1,939	1,975	1,947	1,973
		Public Sector	366	370	385	350	384	357	384
		Males	2,032	2,018	2,033	2,009	2,046	2,025	2,042
		Females	249	279	305	280	313	279	315
		Self-employed	1,401	1,378	1,369	1,393	1,375	1,392	1,375
		Employees	880	919	969	896	984	912	982
		Malta	1,822	1,837	1,877	1,832	1,893	1,839	1,890
		Gozo	459	460	461	457	466	465	467
		Total	2,281	2,297	2,338	2,289	2,359	2,304	2,357
		05-09	Mining and quarrying	Private Sector	378	367	374	364	380
Public Sector	-			-	-	-	-	-	-
Males	338			331	335	329	341	328	339
Females	40			36	39	35	39	36	38
Self-employed	76			78	80	76	80	74	83
Employees	302			289	294	288	300	290	294
Malta	347			337	345	339	345	338	340
Gozo	31			30	29	25	35	26	37
Total	378			367	374	364	380	364	377
10-33	Manufacturing			Private Sector	20,716	20,906	21,177	20,818	21,375
		Public Sector	158	165	166	162	165	162	165
		Males	15,551	15,584	15,724	15,562	15,825	15,620	15,883
		Females	5,323	5,487	5,619	5,418	5,715	5,427	5,770
		Self-employed	1,559	1,574	1,599	1,568	1,609	1,576	1,605
		Employees	19,315	19,497	19,744	19,412	19,931	19,471	20,048
		Malta	19,847	20,012	20,285	19,928	20,468	19,983	20,572
		Gozo	1,027	1,059	1,058	1,052	1,072	1,064	1,081
		Total	20,874	21,071	21,343	20,980	21,540	21,047	21,653
		35	Electricity, gas, steam and air conditioning supply	Private Sector	21	32	31	29	29
Public Sector	38			85	104	64	105	64	112
Males	48			102	117	79	117	78	121
Females	11			15	18	14	17	14	19
Self-employed	2			1	-	-	-	-	-
Employees	57			116	135	93	134	92	140
Malta	59			117	135	93	134	92	140
Gozo	-			-	-	-	-	-	-
Total	59			117	135	93	134	92	140

... Table 2. Full-time employment classified by period, economic activity and category

NACE division	Economic activity	Category	Average 2016	Average 2017 (Revised)	December 2017 (Revised)	January 2017 (Revised)	January 2018	February 2017 (Revised)	February 2018
36-39	Water supply; sewerage, waste management and remediation activities	Private Sector	352	356	371	372	373	367	377
		Public Sector	1,089	1,234	1,264	1,089	1,262	1,084	1,293
		Males	1,248	1,364	1,396	1,252	1,396	1,242	1,431
		Females	193	226	239	209	239	209	239
		Self-employed	77	78	78	77	80	77	80
		Employees	1,364	1,512	1,557	1,384	1,555	1,374	1,590
		Malta	1,333	1,494	1,541	1,363	1,542	1,353	1,577
		Gozo	108	96	94	98	93	98	93
		Total	1,441	1,590	1,635	1,461	1,635	1,451	1,670
41-43	Construction	Private Sector	9,819	10,228	10,446	10,098	10,525	10,112	10,637
		Public Sector	1,023	950	927	986	926	969	927
		Males	10,285	10,569	10,717	10,503	10,787	10,504	10,887
		Females	557	609	656	581	664	577	677
		Self-employed	3,001	3,102	3,179	3,080	3,180	3,096	3,204
		Employees	7,841	8,076	8,194	8,004	8,271	7,985	8,360
		Malta	9,849	10,140	10,334	10,066	10,411	10,047	10,510
		Gozo	993	1,038	1,039	1,018	1,040	1,034	1,054
		Total	10,842	11,178	11,373	11,084	11,451	11,081	11,564
45-47	Wholesale and retail trade; repair of motor vehicles and motorcycles	Private Sector	25,478	26,026	26,206	25,933	26,263	25,967	26,312
		Public Sector	136	290	305	274	308	275	308
		Males	16,920	17,187	17,224	17,164	17,267	17,185	17,266
		Females	8,694	9,129	9,287	9,043	9,304	9,057	9,354
		Self-employed	5,383	5,391	5,384	5,394	5,371	5,384	5,363
		Employees	20,231	20,925	21,127	20,813	21,200	20,858	21,257
		Malta	24,260	24,970	25,155	24,858	25,207	24,901	25,251
		Gozo	1,354	1,346	1,356	1,349	1,364	1,341	1,369
		Total	25,614	26,316	26,511	26,207	26,571	26,242	26,620
49-53	Transportation and storage	Private Sector	7,969	8,312	8,476	8,158	8,464	8,219	8,513
		Public Sector	1,869	1,844	1,926	1,766	1,926	1,747	1,928
		Males	8,081	8,270	8,412	8,139	8,417	8,173	8,468
		Females	1,757	1,886	1,990	1,785	1,973	1,793	1,973
		Self-employed	981	989	1,014	984	1,022	991	1,039
		Employees	8,857	9,167	9,388	8,940	9,368	8,975	9,402
		Malta	9,357	9,670	9,917	9,447	9,902	9,481	9,947
		Gozo	481	486	485	477	488	485	494
		Total	9,838	10,156	10,402	9,924	10,390	9,966	10,441

... Table 2. Full-time employment classified by period, economic activity and category

NACE division	Economic activity	Category	Average 2016	Average 2017 (Revised)	December 2017 (Revised)	January 2017 (Revised)	January 2018	February 2017 (Revised)	February 2018
55-56	Accommodation and food service activities	Private Sector	11,404	12,294	12,654	11,767	12,761	11,798	12,923
		Public Sector	-	-	-	-	-	-	-
		Males	7,677	8,126	8,359	7,876	8,430	7,886	8,517
		Females	3,727	4,168	4,295	3,891	4,331	3,912	4,406
		Self-employed	1,328	1,393	1,415	1,373	1,418	1,375	1,421
		Employees	10,076	10,901	11,239	10,394	11,343	10,423	11,502
		Malta	10,527	11,339	11,711	10,889	11,820	10,909	11,938
		Gozo	877	955	943	878	941	889	985
		Total	11,404	12,294	12,654	11,767	12,761	11,798	12,923
		58-63	Information and communication	Private Sector	6,194	6,738	6,759	6,462	6,797
Public Sector	635			636	640	643	647	640	646
Males	4,852			5,254	5,331	5,028	5,341	5,104	5,385
Females	1,977			2,120	2,068	2,077	2,103	2,106	2,138
Self-employed	370			431	447	406	453	406	456
Employees	6,459			6,943	6,952	6,699	6,991	6,804	7,067
Malta	6,550			7,080	7,100	6,818	7,150	6,920	7,226
Gozo	279			294	299	287	294	290	297
Total	6,829			7,374	7,399	7,105	7,444	7,210	7,523
64-66	Financial and insurance activities			Private Sector	8,194	8,775	9,153	8,501	9,233
		Public Sector	793	812	820	805	826	801	828
		Males	4,371	4,645	4,853	4,518	4,887	4,560	4,916
		Females	4,616	4,942	5,120	4,788	5,172	4,842	5,192
		Self-employed	128	131	135	134	136	133	135
		Employees	8,859	9,456	9,838	9,172	9,923	9,269	9,973
		Malta	8,668	9,250	9,615	8,988	9,705	9,081	9,754
		Gozo	319	337	358	318	354	321	354
		Total	8,987	9,587	9,973	9,306	10,059	9,402	10,108
		68	Real estate activities	Private Sector	1,228	1,377	1,442	1,316	1,460
Public Sector	273			267	264	290	276	286	279
Males	1,030			1,094	1,114	1,086	1,137	1,088	1,143
Females	471			550	592	520	599	526	602
Self-employed	454			524	545	510	551	516	558
Employees	1,047			1,120	1,161	1,096	1,185	1,098	1,187
Malta	1,405			1,535	1,589	1,503	1,619	1,510	1,626
Gozo	96			109	117	103	117	104	119
Total	1,501			1,644	1,706	1,606	1,736	1,614	1,745

... Table 2. Full-time employment classified by period, economic activity and category

NACE division	Economic activity	Category	Average 2016	Average 2017 (Revised)	December 2017 (Revised)	January 2017 (Revised)	January 2018	February 2017 (Revised)	February 2018
69-75	Professional, scientific and technical activities	Private Sector	10,891	12,025	12,557	11,517	12,701	11,632	12,803
		Public Sector	126	135	136	140	149	144	150
		Males	6,279	6,922	7,186	6,689	7,268	6,763	7,326
		Females	4,738	5,238	5,507	4,968	5,582	5,013	5,627
		Self-employed	1,679	1,889	1,985	1,804	2,019	1,826	2,038
		Employees	9,338	10,271	10,708	9,853	10,831	9,950	10,915
		Malta	10,669	11,744	12,253	11,284	12,405	11,391	12,497
		Gozo	348	416	440	373	445	385	456
		Total	11,017	12,160	12,693	11,657	12,850	11,776	12,953
77-82	Administrative and support service activities	Private Sector	12,297	14,215	15,360	13,128	15,785	13,130	15,991
		Public Sector	2,907	2,943	2,912	2,936	2,908	2,975	2,909
		Males	9,601	10,721	11,297	10,082	11,546	10,157	11,669
		Females	5,603	6,437	6,975	5,982	7,147	5,948	7,231
		Self-employed	921	983	1,024	958	1,040	970	1,052
		Employees	14,283	16,175	17,248	15,106	17,653	15,135	17,848
		Malta	14,481	16,200	17,203	15,279	17,451	15,312	17,648
		Gozo	723	958	1,069	785	1,242	793	1,252
		Total	15,204	17,158	18,272	16,064	18,693	16,105	18,900
84	Public administration and defence; compulsory social security	Private Sector	-	-	-	-	-	-	-
		Public Sector	13,096	14,073	14,495	13,910	14,470	13,872	14,493
		Males	8,645	9,119	9,352	9,070	9,316	9,006	9,323
		Females	4,451	4,954	5,143	4,840	5,154	4,866	5,170
		Self-employed	-	-	-	-	-	-	-
		Employees	13,096	14,073	14,495	13,910	14,470	13,872	14,493
		Malta	12,203	13,108	13,491	13,000	13,467	12,948	13,495
		Gozo	893	965	1,004	910	1,003	924	998
		Total	13,096	14,073	14,495	13,910	14,470	13,872	14,493
85	Education	Private Sector	5,063	5,278	5,444	5,144	5,449	5,152	5,475
		Public Sector	11,216	11,524	11,721	11,448	11,723	11,463	11,735
		Males	4,927	5,020	5,094	4,955	5,082	4,963	5,078
		Females	11,352	11,782	12,071	11,637	12,090	11,652	12,132
		Self-employed	326	338	344	336	345	333	348
		Employees	15,953	16,464	16,821	16,256	16,827	16,282	16,862
		Malta	15,051	15,522	15,798	15,364	15,803	15,387	15,841
		Gozo	1,228	1,280	1,367	1,228	1,369	1,228	1,369
		Total	16,279	16,802	17,165	16,592	17,172	16,615	17,210

... Table 2. Full-time employment classified by period, economic activity and category

NACE division	Economic activity	Category	Average 2016	Average 2017 (Revised)	December 2017 (Revised)	January 2017 (Revised)	January 2018	February 2017 (Revised)	February 2018
86-88	Human health and social work activities	Private Sector	4,460	5,230	5,397	4,683	5,511	4,733	5,604
		Public Sector	10,303	9,799	9,816	9,901	9,818	9,873	9,815
		Males	5,428	5,366	5,443	5,282	5,488	5,284	5,514
		Females	9,335	9,663	9,770	9,302	9,841	9,322	9,905
		Self-employed	386	427	451	411	449	412	451
		Employees	14,377	14,602	14,762	14,173	14,880	14,194	14,968
		Malta	13,721	13,977	14,123	13,547	14,231	13,581	14,321
		Gozo	1,042	1,052	1,090	1,037	1,098	1,025	1,098
		Total	14,763	15,029	15,213	14,584	15,329	14,606	15,419
		90-93	Arts, entertainment and recreation	Private Sector	6,360	7,677	8,318	7,179	8,457
Public Sector	558			579	588	554	592	562	593
Males	4,488			5,291	5,698	4,983	5,794	5,045	5,882
Females	2,430			2,965	3,208	2,750	3,255	2,789	3,325
Self-employed	509			559	579	542	588	545	590
Employees	6,409			7,697	8,327	7,191	8,461	7,289	8,617
Malta	6,708			8,040	8,678	7,519	8,821	7,618	8,972
Gozo	210			216	228	214	228	216	235
Total	6,918			8,256	8,906	7,733	9,049	7,834	9,207
94-96	Other service activities			Private Sector	3,534	3,803	3,915	3,659	3,952
		Public Sector	61	60	58	61	60	63	61
		Males	1,597	1,685	1,724	1,630	1,735	1,644	1,754
		Females	1,998	2,178	2,249	2,090	2,277	2,116	2,311
		Self-employed	1,676	1,792	1,864	1,743	1,875	1,753	1,889
		Employees	1,919	2,071	2,109	1,977	2,137	2,007	2,176
		Malta	3,425	3,687	3,791	3,548	3,826	3,588	3,874
		Gozo	170	176	182	172	186	172	191
		Total	3,595	3,863	3,973	3,720	4,012	3,760	4,065
		97-98 ¹	Activities of households as employers; undifferentiated goods- and services-producing activities of households for own use	Private Sector	49	118	407	341	406
Public Sector	-			-	-	-	-	-	-
Males	9			13	44	41	46	38	45
Females	40			105	363	300	360	307	355
Self-employed	5			5	7	6	7	6	7
Employees	44			113	400	335	399	339	393
Malta	49			114	394	336	393	340	386
Gozo	-			4	13	5	13	5	14
Total	49			118	407	341	406	345	400

... Table 2. Full-time employment classified by period, economic activity and category

NACE division	Economic activity	Category	Average 2016	Average 2017 (Revised)	December 2017 (Revised)	January 2017 (Revised)	January 2018	February 2017 (Revised)	February 2018
99	Activities of extraterritorial organisations and bodies	Private Sector	223	222	219	226	220	224	219
		Public Sector	-	-	-	-	-	-	-
		Males	143	140	137	143	137	142	136
		Females	80	82	82	83	83	82	83
		Self-employed	1	-	-	-	-	-	-
		Employees	222	222	219	226	220	224	219
		Malta	223	222	219	226	220	224	219
		Gozo	-	-	-	-	-	-	-
		Total	223	222	219	226	220	224	219
		01-99	Total Gainfully Occupied (including apprentices)	Private Sector	136,545	145,906	150,659	141,634	152,116
Public Sector	44,647			45,766	46,527	45,379	46,545 ²	45,337	46,626 ²
Males	113,550			118,821	121,590	116,420	122,403	116,835	123,125
Females	67,642			72,851	75,596	70,593	76,258	70,873	76,862
Self-employed	20,263			21,063	21,499	20,795	21,598	20,865	21,694
Employees	160,929			170,609	175,687	166,218	177,063	166,843	178,293
Malta	170,554			180,395	185,554	176,227	186,813	176,843	188,024
Gozo	10,638			11,277	11,632	10,786	11,848	10,865	11,963
Total	181,192			191,672	197,186	187,013	198,661	187,708	199,987

¹ Refer to methodological note 6

² Public sector employment in January and February 2018 stood at 46,545 and 46,626 respectively, while the full-time equivalent (FTE) was calculated at 43,105 and 43,141 respectively. Refer to methodological note 5.

Table 3. Part-time employment classified by period and economic activity ...

NACE division	Economic activity	Average 2016	Average 2017 (Revised)	December 2017 (Revised)	January 2017 (Revised)	January 2018	February 2017 (Revised)	February 2018
01-03	Agriculture, forestry and fishing	2,205	2,311	2,383	2,247	2,383	2,272	2,398
01	Crop and animal production, hunting and related service activities	1,595	1,679	1,737	1,638	1,741	1,661	1,752
02	Forestry and logging	-	-	-	-	-	-	-
03	Fishing and aquaculture	610	632	646	609	642	611	646
05-09	Mining and quarrying	31	38	37	34	39	36	38
05	Mining of coal and lignite	-	-	-	-	-	-	-
06	Extraction of crude petroleum and natural gas	-	-	-	-	-	-	-
07	Mining of metal ores	-	-	-	-	-	-	-
08	Other mining and quarrying	26	31	30	28	32	30	31
09	Mining support service activities	5	7	7	6	7	6	7
10-33	Manufacturing	2,845	2,990	3,016	2,872	3,045	2,896	3,090
10	Manufacture of food products	697	691	694	696	708	690	725
11	Manufacture of beverages	66	74	74	68	76	66	78
12	Manufacture of tobacco products	2	2	2	2	2	2	2
13	Manufacture of textiles	45	54	56	50	54	50	57
14	Manufacture of wearing apparel	73	64	65	63	61	63	61
15	Manufacture of leather and related products	9	8	5	8	5	9	5
16	Manufacture of wood and of products of wood and cork, except furniture; manufacture of articles of straw and plaiting materials	62	63	63	62	62	64	62
17	Manufacture of paper and paper products	18	19	20	17	21	19	22
18	Printing and reproduction of recorded media	153	175	186	157	190	162	196
19	Manufacture of coke and refined petroleum products	1	1	1	-	1	-	1
20	Manufacture of chemicals and chemical products	55	57	58	58	57	57	57
21	Manufacture of basic pharmaceutical products and pharmaceutical preparations	42	52	60	51	59	49	58
22	Manufacture of rubber and plastic products	128	136	130	125	127	127	126
23	Manufacture of other non-metallic mineral products	141	150	159	139	164	138	162
24	Manufacture of basic metals	51	52	56	42	59	43	61
25	Manufacture of fabricated metal products, except machinery and equipment	239	249	247	250	243	248	242
26	Manufacture of computer, electronic and optical products	85	85	84	83	85	81	88
27	Manufacture of electrical equipment	80	96	100	87	114	93	110
28	Manufacture of machinery and equipment n.e.c.	43	47	48	48	47	46	50
29	Manufacture of motor vehicles, trailers and semi-trailers	97	107	105	104	107	105	114
30	Manufacture of other transport equipment	42	55	67	48	67	47	66
31	Manufacture of furniture	323	324	321	328	323	328	324
32	Other manufacturing	211	235	225	198	217	223	221
33	Repair and installation of machinery and equipment	182	194	190	188	196	186	202
35	Electricity, gas, steam and air conditioning supply	10	11	10	6	10	6	10
36-39	Water supply; sewerage, waste management and remediation activities	194	199	168	190	166	190	166
36	Water collection, treatment and supply	50	54	33	45	33	46	33
37	Sewerage	4	4	3	3	3	3	4
38	Waste collection, treatment and disposal activities; materials recovery	133	132	124	134	123	132	122
39	Remediation activities and other waste management services	7	9	8	8	7	9	7

... Table 3. Part-time employment classified by period and economic activity

NACE division	Economic activity	Average 2016	Average 2017 (Revised)	December 2017 (Revised)	January 2017 (Revised)	January 2018	February 2017 (Revised)	February 2018
41-43	Construction	1,635	1,801	1,858	1,715	1,853	1,737	1,860
41	Construction of buildings	467	525	539	505	527	503	526
42	Civil engineering	74	92	97	90	98	93	97
43	Specialised construction activities	1,094	1,184	1,222	1,120	1,228	1,141	1,237
45-47	Wholesale and retail trade; repair of motor vehicles and motorcycles	10,363	10,877	10,959	10,386	10,976	10,409	10,936
45	Wholesale and retail trade and repair of motor vehicles and motorcycles	653	683	696	660	706	666	702
46	Wholesale trade, except of motor vehicles and motorcycles	2,511	2,660	2,679	2,514	2,686	2,533	2,685
47	Retail trade, except of motor vehicles and motorcycles	7,199	7,534	7,584	7,212	7,584	7,210	7,549
49-53	Transportation and storage	2,663	2,973	3,083	2,807	3,031	2,827	3,038
49	Land transport and transport via pipelines	1,557	1,783	1,915	1,698	1,880	1,691	1,873
50	Water transport	133	140	143	125	142	126	139
51	Air transport	408	445	462	462	452	457	464
52	Warehousing and support activities for transportation	370	435	415	357	410	367	409
53	Postal and courier activities	195	170	148	165	147	186	153
55-56	Accommodation and food service activities	9,751	9,654	9,623	9,100	9,450	9,092	9,487
55	Accommodation	3,141	2,961	2,993	2,779	2,936	2,782	2,915
56	Food and beverage service activities	6,610	6,693	6,630	6,321	6,514	6,310	6,572
58-63	Information and communication	1,353	1,509	1,595	1,385	1,588	1,419	1,594
58	Publishing activities	159	191	202	164	198	167	196
59	Motion picture, video and television programme production, sound recording and music publishing activities	251	250	256	244	258	248	261
60	Programming and broadcasting activities	178	173	174	167	173	163	176
61	Telecommunications	210	226	228	214	221	228	214
62	Computer programming, consultancy and related activities	503	600	662	535	662	550	670
63	Information service activities	52	69	73	61	76	63	77
64-66	Financial and insurance activities	1,022	1,103	1,150	999	1,171	1,021	1,181
64	Financial service activities, except insurance and pension funding	606	637	677	571	691	585	699
65	Insurance, reinsurance and pension funding, except compulsory social security	175	211	211	185	219	185	218
66	Activities auxiliary to financial services and insurance activities	241	255	262	243	261	251	264
68	Real estate activities	516	623	657	556	662	575	675
69-75	Professional, scientific and technical activities	4,001	4,481	4,685	4,099	4,708	4,162	4,770
69	Legal and accounting activities	1,015	1,142	1,150	1,043	1,177	1,058	1,196
70	Activities of head offices; management consultancy activities	1,475	1,594	1,622	1,469	1,632	1,486	1,656
71	Architectural and engineering activities; technical testing and analysis	600	664	698	612	686	620	693
72	Scientific research and development	25	38	47	31	49	33	52
73	Advertising and market research	460	518	578	500	597	504	596
74	Other professional, scientific and technical activities	400	497	561	418	538	435	547
75	Veterinary activities	26	28	29	26	29	26	30

... Table 3. Part-time employment classified by period and economic activity

NACE division	Economic activity	Average 2016	Average 2017 (Revised)	December 2017 (Revised)	January 2017 (Revised)	January 2018	February 2017 (Revised)	February 2018
77-82	Administrative and support service activities	5,520	5,669	5,139	5,587	5,236	5,534	5,307
77	Rental and leasing activities	561	584	581	543	590	551	592
78	Employment activities	1,204	1,125	604	1,159	645	1,126	652
79	Travel agency, tour operator and other reservation service and related activities	521	587	584	580	580	583	586
80	Security and investigation activities	1,273	1,343	1,325	1,354	1,345	1,338	1,338
81	Services to buildings and landscape activities	1,144	1,114	1,114	1,095	1,132	1,078	1,149
82	Office administrative, office support and other business support activities	817	916	931	856	944	858	990
84	Public administration and defence; compulsory social security	2,784	2,865	2,562	2,448	2,565	2,486	2,572
85	Education	5,619	5,804	5,667	5,536	5,640	5,547	5,671
86-88	Human health and social work activities	3,165	3,197	3,221	3,182	3,221	3,183	3,244
86	Human health activities	1,012	1,100	1,178	1,055	1,170	1,063	1,196
87	Residential care activities	1,554	1,480	1,384	1,508	1,405	1,508	1,387
88	Social work activities without accommodation	599	617	659	619	646	612	661
90-93	Arts, entertainment and recreation	2,130	2,428	2,607	2,276	2,649	2,299	2,653
90	Creative, arts and entertainment activities	521	661	727	577	737	596	741
91	Libraries, archives, museums and other cultural activities	116	118	123	124	120	122	121
92	Gambling and betting activities	486	525	533	517	537	514	538
93	Sports activities and amusement and recreation activities	1,007	1,124	1,224	1,058	1,255	1,067	1,253
94-96	Other service activities	2,235	2,433	2,475	2,313	2,501	2,334	2,510
94	Activities of membership organisations	545	571	566	560	577	568	575
95	Repair of computers and personal and household goods	144	157	157	153	159	152	159
96	Other personal service activities	1,546	1,705	1,752	1,600	1,765	1,614	1,776
97-98	Activities of households as employers; undifferentiated goods- and services-producing activities of households for own use	11	15	26	27	26	24	28
97 ¹	Activities of households as employers of domestic personnel	10	14	25	26	25	23	27
98	Undifferentiated goods- and services-producing activities of private households for own use	1	1	1	1	1	1	1
99	Activities of extraterritorial organisations and bodies	16	16	15	16	14	15	14
01-99	Total	58,069	60,997	60,936	57,781	60,934	58,064	61,242

¹ Refer to methodological note 6

Table 4. Part-time employment classified by period, economic activity, part-time job type and category ...

NACE division	Economic activity	Type of part-time job	Category	Average 2016	Average 2017 (Revised)	December 2017 (Revised)	January 2017 (Revised)	January 2018	February 2017 (Revised)	February 2018
01-03	Agriculture, forestry and fishing	Part-timers holding a full-time job	Males	1,223	1,291	1,342	1,256	1,352	1,267	1,369
			Females	68	80	84	72	85	75	85
			Malta	999	1,070	1,117	1,035	1,121	1,048	1,133
			Gozo	292	301	309	293	316	294	321
			Total	1,291	1,371	1,426	1,328	1,437	1,342	1,454
			Total	1,291	1,371	1,426	1,328	1,437	1,342	1,454
		Part-time as a primary job	Males	750	772	784	755	774	765	771
			Females	164	168	173	164	172	165	173
			Malta	760	782	793	766	781	775	782
			Gozo	154	158	164	153	165	155	162
			Total	914	940	957	919	946	930	944
			Total	914	940	957	919	946	930	944
Total	2,205	2,311	2,383	2,247	2,383	2,272	2,398			
05-09	Mining and quarrying	Part-timers holding a full-time job	Males	13	15	13	11	14	13	14
			Females	1	2	2	2	3	2	3
			Malta	5	11	8	8	9	10	9
			Gozo	9	6	7	5	8	5	8
			Total	14	17	15	13	17	15	17
			Total	14	17	15	13	17	15	17
		Part-time as a primary job	Males	13	17	18	17	18	17	17
			Females	4	4	4	4	4	4	4
			Malta	14	18	19	18	18	18	17
			Gozo	3	3	3	3	4	3	4
			Total	17	21	22	21	22	21	21
			Total	17	21	22	21	22	21	21
Total	31	38	37	34	39	36	38			
10-33	Manufacturing	Part-timers holding a full-time job	Males	901	990	1,012	900	1,030	929	1,041
			Females	196	217	219	202	226	208	233
			Malta	982	1,068	1,081	989	1,106	1,018	1,125
			Gozo	115	139	150	113	150	119	149
			Total	1,097	1,207	1,231	1,102	1,256	1,137	1,274
			Total	1,097	1,207	1,231	1,102	1,256	1,137	1,274
		Part-time as a primary job	Males	867	898	887	890	890	887	901
			Females	881	885	898	880	899	872	915
			Malta	1,621	1,652	1,648	1,638	1,655	1,628	1,679
			Gozo	127	131	137	132	134	131	137
			Total	1,748	1,783	1,785	1,770	1,789	1,759	1,816
			Total	1,748	1,783	1,785	1,770	1,789	1,759	1,816
Total	2,845	2,990	3,016	2,872	3,045	2,896	3,090			
35	Electricity, gas, steam and air conditioning supply	Part-timers holding a full-time job	Males	-	1	1	-	1	-	1
			Females	-	-	-	-	-	-	-
			Malta	-	1	1	-	1	-	1
			Gozo	-	-	-	-	-	-	-
			Total	-	1	1	-	1	-	1
			Total	-	1	1	-	1	-	1
		Part-time as a primary job	Males	5	4	3	3	3	3	3
			Females	5	6	6	3	6	3	6
			Malta	10	9	8	5	8	5	8
			Gozo	-	1	1	1	1	1	1
			Total	10	10	9	6	9	6	9
			Total	10	10	9	6	9	6	9
Total	10	11	10	6	10	6	10			

... Table 4. Part-time employment classified by period, economic activity, part-time job type and category

NACE division	Economic activity	Type of part-time job	Category	Average 2016	Average 2017 (Revised)	December 2017 (Revised)	January 2017 (Revised)	January 2018	February 2017 (Revised)	February 2018
36-39	Water supply; sewerage, waste management and remediation activities	Part-timers holding a full-time job	Males	49	54	52	50	54	49	55
			Females	7	11	9	9	9	9	9
			Malta	50	57	56	54	58	53	59
			Gozo	6	8	5	5	5	5	5
			Total	56	65	61	59	63	58	64
		Part-time as a primary job	Males	87	86	66	88	62	89	63
			Females	51	48	41	43	41	43	39
			Malta	128	129	103	125	99	126	98
			Gozo	10	5	4	6	4	6	4
			Total	138	134	107	131	103	132	102
Total				194	199	168	190	166	190	166
41-43	Construction	Part-timers holding a full-time job	Males	788	887	941	830	943	846	945
			Females	90	100	104	94	104	94	106
			Malta	709	797	841	749	839	757	844
			Gozo	169	190	204	175	208	183	207
			Total	878	987	1,045	924	1,047	940	1,051
		Part-time as a primary job	Males	599	646	643	625	641	632	646
			Females	158	168	170	166	165	165	163
			Malta	653	710	707	692	696	695	700
			Gozo	104	104	106	99	110	102	109
			Total	757	814	813	791	806	797	809
Total				1,635	1,801	1,858	1,715	1,853	1,737	1,860
45-47	Wholesale and retail trade; repair of motor vehicles and motorcycles	Part-timers holding a full-time job	Males	2,259	2,388	2,425	2,277	2,433	2,303	2,444
			Females	1,160	1,365	1,394	1,193	1,399	1,207	1,413
			Malta	3,096	3,388	3,443	3,133	3,456	3,174	3,482
			Gozo	323	365	376	337	376	336	375
			Total	3,419	3,753	3,819	3,470	3,832	3,510	3,857
		Part-time as a primary job	Males	2,143	2,224	2,222	2,113	2,230	2,112	2,210
			Females	4,801	4,900	4,918	4,803	4,914	4,787	4,869
			Malta	6,475	6,635	6,645	6,457	6,656	6,430	6,585
			Gozo	469	489	495	459	488	469	494
			Total	6,944	7,124	7,140	6,916	7,144	6,899	7,079
Total				10,363	10,877	10,959	10,386	10,976	10,409	10,936
49-53	Transportation and storage	Part-timers holding a full-time job	Males	1,041	1,218	1,307	1,122	1,288	1,114	1,301
			Females	160	200	218	180	215	183	217
			Malta	1,129	1,335	1,432	1,225	1,414	1,220	1,431
			Gozo	72	83	93	77	89	77	87
			Total	1,201	1,418	1,525	1,302	1,503	1,297	1,518
		Part-time as a primary job	Males	1,009	1,082	1,111	1,053	1,097	1,068	1,085
			Females	453	473	447	452	431	462	435
			Malta	1,386	1,481	1,484	1,440	1,454	1,460	1,448
			Gozo	76	74	74	65	74	70	72
			Total	1,462	1,555	1,558	1,505	1,528	1,530	1,520
Total				2,663	2,973	3,083	2,807	3,031	2,827	3,038

... Table 4. Part-time employment classified by period, economic activity, part-time job type and category

NACE division	Economic activity	Type of part-time job	Category	Average 2016	Average 2017 (Revised)	December 2017 (Revised)	January 2017 (Revised)	January 2018	February 2017 (Revised)	February 2018
55-56	Accommodation and food service activities	Part-timers holding a full-time job	Males	2,339	2,457	2,466	2,274	2,467	2,314	2,497
			Females	973	1,067	1,097	962	1,093	972	1,110
			Malta	3,049	3,225	3,254	2,976	3,254	3,020	3,297
			Gozo	263	299	309	260	306	266	310
			Total	3,312	3,524	3,563	3,236	3,560	3,286	3,607
		Part-time as a primary job	Males	3,110	2,967	2,989	2,841	2,887	2,791	2,875
			Females	3,329	3,163	3,071	3,023	3,003	3,015	3,005
			Malta	5,994	5,675	5,613	5,483	5,447	5,426	5,425
			Gozo	445	455	447	381	443	380	455
			Total	6,439	6,130	6,060	5,864	5,890	5,806	5,880
		Total				9,751	9,654	9,623	9,100	9,450
58-63	Information and communication	Part-timers holding a full-time job	Males	494	566	598	532	596	538	603
			Females	160	180	197	158	203	165	201
			Malta	618	694	736	646	741	656	746
			Gozo	36	52	59	44	58	47	58
			Total	654	746	795	690	799	703	804
		Part-time as a primary job	Males	382	417	437	370	433	384	435
			Females	317	346	363	325	356	332	355
			Malta	668	729	764	664	751	688	752
			Gozo	31	34	36	31	38	28	38
			Total	699	763	800	695	789	716	790
		Total				1,353	1,509	1,595	1,385	1,588
64-66	Financial and insurance activities	Part-timers holding a full-time job	Males	248	252	257	242	265	247	268
			Females	118	140	151	124	150	123	148
			Malta	352	379	394	353	402	356	403
			Gozo	14	13	14	13	13	14	13
			Total	366	392	408	366	415	370	416
		Part-time as a primary job	Males	252	261	263	234	274	236	276
			Females	404	450	479	399	482	415	489
			Malta	644	697	730	623	744	640	753
			Gozo	12	14	12	10	12	11	12
			Total	656	711	742	633	756	651	765
		Total				1,022	1,103	1,150	999	1,171
68	Real estate activities	Part-timers holding a full-time job	Males	158	200	219	180	225	186	230
			Females	73	100	107	84	106	88	109
			Malta	182	247	274	211	279	220	285
			Gozo	49	53	52	53	52	54	54
			Total	231	300	326	264	331	274	339
		Part-time as a primary job	Males	108	124	126	117	122	120	125
			Females	177	199	205	175	209	181	211
			Malta	246	284	291	254	291	263	296
			Gozo	39	39	40	38	40	38	40
			Total	285	323	331	292	331	301	336
		Total				516	623	657	556	662

... Table 4. Part-time employment classified by period, economic activity, part-time job type and category

NACE division	Economic activity	Type of part-time job	Category	Average 2016	Average 2017 (Revised)	December 2017 (Revised)	January 2017 (Revised)	January 2018	February 2017 (Revised)	February 2018
69-75	Professional, scientific and technical activities	Part-timers holding a full-time job	Males	1,150	1,319	1,401	1,203	1,402	1,222	1,424
			Females	654	811	865	732	876	750	891
			Malta	1,700	2,009	2,134	1,824	2,143	1,859	2,179
			Gozo	104	121	132	111	135	113	136
			Total	1,804	2,130	2,266	1,935	2,278	1,972	2,315
			Total	1,804	2,130	2,266	1,935	2,278	1,972	2,315
		Part-time as a primary job	Males	978	1,086	1,152	970	1,136	984	1,139
			Females	1,219	1,265	1,267	1,194	1,294	1,206	1,316
			Malta	2,118	2,262	2,323	2,092	2,329	2,114	2,353
			Gozo	79	89	96	72	101	76	102
			Total	2,197	2,351	2,419	2,164	2,430	2,190	2,455
			Total	2,197	2,351	2,419	2,164	2,430	2,190	2,455
Total	4,001	4,481	4,685	4,099	4,708	4,162	4,770			
77-82	Administrative and support service activities	Part-timers holding a full-time job	Males	1,832	1,863	1,639	1,859	1,655	1,863	1,669
			Females	670	750	665	696	694	698	705
			Malta	2,393	2,477	2,157	2,429	2,198	2,435	2,224
			Gozo	109	136	147	126	151	126	150
			Total	2,502	2,613	2,304	2,555	2,349	2,561	2,374
			Total	2,502	2,613	2,304	2,555	2,349	2,561	2,374
		Part-time as a primary job	Males	1,273	1,286	1,173	1,273	1,204	1,249	1,220
			Females	1,745	1,770	1,662	1,759	1,683	1,724	1,713
			Malta	2,867	2,856	2,629	2,850	2,676	2,790	2,720
			Gozo	151	200	206	182	211	183	213
			Total	3,018	3,056	2,835	3,032	2,887	2,973	2,933
			Total	3,018	3,056	2,835	3,032	2,887	2,973	2,933
Total	5,520	5,669	5,139	5,587	5,236	5,534	5,307			
84	Public administration and defence; compulsory social security	Part-timers holding a full-time job	Males	431	412	389	396	396	399	400
			Females	532	558	506	448	507	472	506
			Malta	861	877	819	761	828	786	831
			Gozo	102	93	76	83	75	85	75
			Total	963	970	895	844	903	871	906
			Total	963	970	895	844	903	871	906
		Part-time as a primary job	Males	501	550	508	449	511	452	508
			Females	1,320	1,345	1,159	1,155	1,151	1,163	1,158
			Malta	1,671	1,739	1,524	1,465	1,520	1,475	1,526
			Gozo	150	156	143	139	142	140	140
			Total	1,821	1,895	1,667	1,604	1,662	1,615	1,666
			Total	1,821	1,895	1,667	1,604	1,662	1,615	1,666
Total	2,784	2,865	2,562	2,448	2,565	2,486	2,572			
85	Education	Part-timers holding a full-time job	Males	1,595	1,640	1,669	1,617	1,660	1,622	1,666
			Females	1,450	1,516	1,512	1,450	1,514	1,442	1,519
			Malta	2,889	2,984	3,000	2,907	2,997	2,901	3,008
			Gozo	156	172	181	160	177	163	177
			Total	3,045	3,156	3,181	3,067	3,174	3,064	3,185
			Total	3,045	3,156	3,181	3,067	3,174	3,064	3,185
		Part-time as a primary job	Males	949	993	940	919	937	926	942
			Females	1,625	1,655	1,546	1,550	1,529	1,557	1,544
			Malta	2,460	2,532	2,375	2,361	2,355	2,377	2,378
			Gozo	114	116	111	108	111	106	108
			Total	2,574	2,648	2,486	2,469	2,466	2,483	2,486
			Total	2,574	2,648	2,486	2,469	2,466	2,483	2,486
Total	5,619	5,804	5,667	5,536	5,640	5,547	5,671			

... Table 4. Part-time employment classified by period, economic activity, part-time job type and category

NACE division	Economic activity	Type of part-time job	Category	Average 2016	Average 2017 (Revised)	December 2017 (Revised)	January 2017 (Revised)	January 2018	February 2017 (Revised)	February 2018
86-88	Human health and social work activities	Part-timers holding a full-time job	Males	427	431	436	428	442	434	441
			Females	603	656	689	608	692	609	706
			Malta	958	1,007	1,035	964	1,046	970	1,060
			Gozo	72	80	90	72	88	73	87
			Total	1,030	1,087	1,125	1,036	1,134	1,043	1,147
			Total	1,030	1,087	1,125	1,036	1,134	1,043	1,147
		Part-time as a primary job	Males	337	341	330	344	326	332	324
			Females	1,798	1,769	1,766	1,802	1,761	1,808	1,773
			Malta	1,982	1,955	1,950	1,988	1,941	1,985	1,952
			Gozo	153	155	146	158	146	155	145
			Total	2,135	2,110	2,096	2,146	2,087	2,140	2,097
			Total	2,135	2,110	2,096	2,146	2,087	2,140	2,097
Total	3,165	3,197	3,221	3,182	3,221	3,183	3,244			
90-93	Arts, entertainment and recreation	Part-timers holding a full-time job	Males	645	742	821	691	830	698	844
			Females	292	341	372	307	386	311	390
			Malta	872	997	1,083	921	1,110	932	1,126
			Gozo	65	86	110	77	106	77	108
			Total	937	1,083	1,193	998	1,216	1,009	1,234
			Total	937	1,083	1,193	998	1,216	1,009	1,234
		Part-time as a primary job	Males	567	663	695	626	694	636	688
			Females	626	682	719	652	739	654	731
			Malta	1,151	1,290	1,351	1,230	1,369	1,240	1,354
			Gozo	42	55	63	48	64	50	65
			Total	1,193	1,345	1,414	1,278	1,433	1,290	1,419
			Total	1,193	1,345	1,414	1,278	1,433	1,290	1,419
Total	2,130	2,428	2,607	2,276	2,649	2,299	2,653			
94-96	Other service activities	Part-timers holding a full-time job	Males	351	393	416	376	425	372	425
			Females	288	341	348	299	353	303	365
			Malta	593	688	719	630	732	632	745
			Gozo	46	46	45	45	46	43	45
			Total	639	734	764	675	778	675	790
			Total	639	734	764	675	778	675	790
		Part-time as a primary job	Males	451	483	476	462	478	463	479
			Females	1,145	1,216	1,235	1,176	1,245	1,196	1,241
			Malta	1,486	1,579	1,591	1,517	1,604	1,537	1,600
			Gozo	110	120	120	121	119	122	120
			Total	1,596	1,699	1,711	1,638	1,723	1,659	1,720
			Total	1,596	1,699	1,711	1,638	1,723	1,659	1,720
Total	2,235	2,433	2,475	2,313	2,501	2,334	2,510			
97-98 ¹	Activities of households as employers; undifferentiated goods- and services-producing activities of households for own use	Part-timers holding a full-time job	Males	2	3	6	6	6	5	6
			Females	1	2	3	4	3	2	3
			Malta	3	5	9	10	9	7	9
			Gozo	-	-	-	-	-	-	-
			Total	3	5	9	10	9	7	9
			Total	3	5	9	10	9	7	9
		Part-time as a primary job	Males	2	3	5	5	5	4	5
			Females	6	7	12	12	12	13	14
			Malta	8	10	16	15	16	15	18
			Gozo	-	-	1	2	1	2	1
			Total	8	10	17	17	17	17	19
			Total	8	10	17	17	17	17	19
Total	11	15	26	27	26	24	28			

... Table 4. Part-time employment classified by period, economic activity, part-time job type and category

NACE division	Economic activity	Type of part-time job	Category	Average 2016	Average 2017 (Revised)	December 2017 (Revised)	January 2017 (Revised)	January 2018	February 2017 (Revised)	February 2018		
99	Activities of extraterritorial organisations and bodies	Part-timers holding a full-time job	Males	1	1	1	1	1	1	1		
			Females	-	-	-	-	-	-	-		
			Malta	1	1	1	1	1	1	1		
			Gozo	-	-	-	-	-	-	-		
			Total	1	1	1	1	1	1	1		
			Total	1	1	1	1	1	1	1		
		Part-time as a primary job	Males	1	1	1	1	1	1	1		
			Females	14	14	13	14	12	13	12		
			Malta	15	15	14	15	13	14	13		
			Gozo	-	-	-	-	-	-	-		
			Total	15	15	14	15	13	14	13		
			Total	15	15	14	15	13	14	13		
		Total				16	16	15	16	14	15	14
		01-99	Total	Part-timers holding a full-time job	Males	15,947	17,123	17,411	16,251	17,485	16,422	17,644
Females	7,496				8,437	8,542	7,624	8,618	7,713	8,719		
Malta	21,441				23,317	23,594	21,826	23,744	22,055	23,998		
Gozo	2,002				2,243	2,359	2,049	2,359	2,080	2,365		
Total	23,443				25,560	25,953	23,875	26,103	24,135	26,363		
Total	23,443				25,560	25,953	23,875	26,103	24,135	26,363		
Part-time as a primary job	Males			14,384	14,904	14,829	14,155	14,723	14,151	14,713		
	Females			20,242	20,533	20,154	19,751	20,108	19,778	20,166		
	Malta			32,357	33,039	32,578	31,698	32,423	31,701	32,457		
	Gozo			2,269	2,398	2,405	2,208	2,408	2,228	2,422		
	Total			34,626	35,437	34,983	33,906	34,831	33,929	34,879		
	Total			34,626	35,437	34,983	33,906	34,831	33,929	34,879		
Total part-timers						58,069	60,997	60,936	57,781	60,934	58,064	61,242

¹ Refer to methodological note 6

Methodological Notes

1. The data provided in this release, including the relevant classifications, is based on administrative records held at the JobsPlus. The information contained in this release may be subject to revision. Monthly data is revised in the subsequent year.
2. The National Statistics Office publishes, on a quarterly basis, another set of statistics on employment and unemployment based on the Labour Force Survey (LFS). When compiling LFS statistics, the NSO adopts the International Labour Organisation (ILO) definition, an internationally agreed definition on employment and unemployment. This definition has also been adopted by Eurostat and is used by all EU Member States. More details regarding the methodology used for the compilation of employment and unemployment statistics from the LFS may be found in quarterly LFS news releases.

Since JobsPlus records and LFS results measure two different facets of employment and unemployment, these are not comparable. Users are therefore cautioned that these two sets of statistics should not be used interchangeably.

3. Full-time and part-time status is determined by the employer's declaration (or that made by a self-employed person) in the engagement form which is required to be sent to JobsPlus upon commencement of employment.
4. Apprentices are included under their respective economic activity.

5. Definitions:

- **Labour Supply:** Full-time gainfully occupied population and the registered unemployed population.
 - **Apprentices, trainees and students:** Includes apprentices, trainees, Junior College and University students in the summer work-phase, undergraduate trainees, and trainees with fixed contracts.
 - **Regional employment:** Data on Malta/Gozo employment differs on the basis of economic sector. Accordingly, the data on private sector employment depends on employee residence, whereas data for public sector depends on employer information on the location of its employees.
 - **Full-time equivalent (FTE):** Employment in full-time equivalent is a conversion method used to measure the number of employees according to the number of hours worked. When using FTE a full-time employee working a 40 hour week is equivalent to 1.0, whereas a person who works 20 hours per week is equivalent to 0.5. Table 2 of this release includes persons who work full-time, persons on a full-time with reduced hours basis and full-time employees who are on unpaid leave. When converting these figures into FTE, full-time employees are considered as 1 whereas persons working full-time with reduced hours or who are on unpaid leave are considered according to the hours worked. FTE data is currently available in respect of public sector employment and is based on the administrative records of the People and Standards Division within the Office of the Prime Minister. FTE information for the private sector is not available.
 - **Part 1 of the unemployment register:** Persons registering under Part 1 are either new job seekers who have left school, re-entrants into the labour market, or individuals who have been made redundant by their former employer.
 - **Part 2 of the unemployment register:** Persons registering under Part 2 are either workers who have been dismissed from work due to disciplinary action, left work out of their own free will, refused work or training opportunities or were struck off the register after an inspection by Law Enforcement personnel.
6. Owing to a reclassification exercise carried out by JobsPlus, employers recruiting domestic workers for personal services, (not as a commercial activity), have been transferred from NACE divisions 86 and 88 to NACE division 97. Within the latter division, a household employer is defined as a person who pays an individual to perform duties in or around his home. Household employees may include nannies, care workers and private nurses. This change came into effect as from December 2017 and as such, affected also the average for that year.

7. More information relating to this news release may be accessed at:

Statistical concept: <http://nso.gov.mt/metadata/concepts.aspx>

Classifications: <http://nso.gov.mt/metadata/classificationdetails.aspx?id=NACE Rev. 2>

8. References to this news release are to be cited appropriately.

9. A detailed news release calendar is available on:

https://nso.gov.mt/en/News_Releases/Release_Calendar/Pages/News-Release-Calendar.aspx