

27 April 2015 | 1100 hrs | 080/2015

Total arrivals and nights spent in collective accommodation establishments during February advanced by 4.9 and 8.9 per cent respectively when compared to the corresponding month in 2014.

## Collective Accommodation Establishments: February 2015

Cut-off date:  
**22 April 2015**

In February 2015, total arrivals in collective accommodation establishments numbered 91,087, while total nights spent amounted to 466,315. Collective accommodation categories recorded increases in total nights spent, except for 5-star and 3-star hotels. The largest share of guest nights was reported in 4-star hotels, accounting for 251,688 nights, or 54.0 per cent of the total (Tables 1 and 2).

The average length of stay in collective accommodation establishments went up from 4.9 nights in February 2014 to 5.1 nights in the same month of 2015. The net use of bed-places stood at 48.9 per cent, up by 5.4 percentage points when compared to the corresponding month last year (Table 3).

### Capacity

On a national level, there were 138 active collective accommodation establishments during February, with a net capacity of 15,957 bedrooms and 34,389 bed-places (Table 4).

### Regional breakdown

Total arrivals in Malta numbered 86,986, up by 6.2 per cent over February 2014. Additionally, an increase of 9.6 per cent was recorded in the number of nights spent (Tables 1 and 2). The average length of stay edged up by 0.2 of a night to 5.2, when compared to last year, while the net occupancy rate advanced from 44.1 per cent to 50.0 per cent (Table 3). Total arrivals and nights spent in Gozo and Comino decreased by 17.6 and 16.9 per cent when compared to the comparative month last year, to 4,101 and 10,116 respectively (Tables 1 and 2).

### January-February 2015

Total arrivals during the first two months of 2015 amounted to 162,287, 5.3 per cent more than last year (Table 1). Total nights spent went up by 8.0 per cent, reaching 868,145 (Table 2). The net use of bed-places advanced by 4.7 percentage points to stand at 43.6 per cent (Table 3) ■

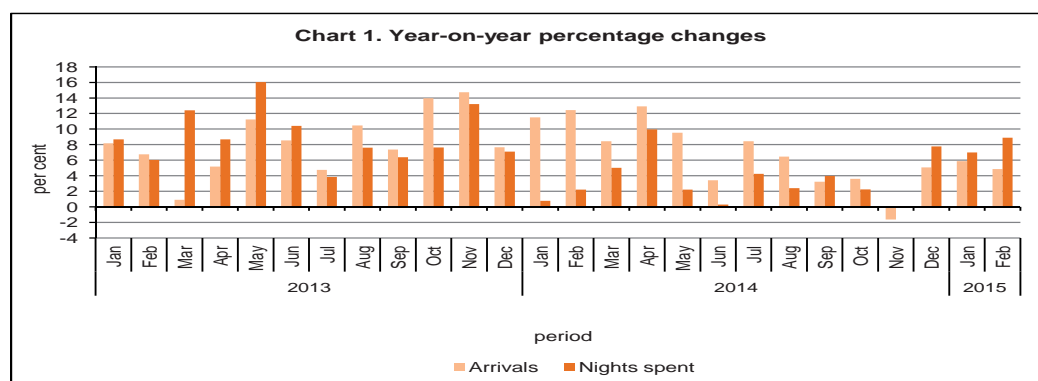
Compiled by:

**Unit C3: Population and  
Tourism Statistics**

**Directorate C: Social  
Statistics**

Further information on data:

**Mr Matthew ZERAFA**  
T. +356 2599 7630  
E. matthew.zerafa@gov.mt



Kindly indicate source when quoting from this release.  
The advance release calendar may be consulted at [www.nso.gov.mt](http://www.nso.gov.mt)

Issued by: **External Cooperation and Communication Unit, National Statistics Office, Lascaris, Valletta VLT 2000, Malta.**  
T. +356 2599 7219 F. +356 2599 7205 E. [nso@gov.mt](mailto:nso@gov.mt)

**Table 1. Total arrivals by period and type of accommodation**

Type of accommodation	January*	February		January-February	
	2015	2014	2015	2014	2015
	MALTA				
Hotel	69,150	84,724	88,815	149,649	157,965
5 Star	16,354	24,754	22,800	44,128	39,154
4 Star	35,751	39,634	45,608	67,588	81,358
3 Star	15,330	18,478	18,634	34,610	33,964
2 Star	1,716	1,858	1,774	3,323	3,489
Other collective accommodation <sup>1</sup>	2,049	2,134	2,272	4,460	4,321
<b>Total</b>	<b>71,199</b>	<b>86,858</b>	<b>91,087</b>	<b>154,109</b>	<b>162,287</b>
	Malta				
Hotel	66,830	79,808	84,824	141,665	151,654
of which:					
5 Star	16,214	23,163	21,923	41,637	38,137
4 Star	34,194	37,300	43,278	63,833	77,471
3 Star	14,879	17,831	17,944	33,413	32,823
Other collective accommodation <sup>1</sup>	1,998	2,076	2,162	4,378	4,160
<b>Total</b>	<b>68,828</b>	<b>81,884</b>	<b>86,986</b>	<b>146,043</b>	<b>155,815</b>
	Gozo and Comino				
Hotel	2,320	4,916	3,991	7,984	6,311
of which:					
5 Star	140	1,591	877	2,491	1,017
4 Star	1,557	2,334	2,330	3,755	3,887
3 Star	451	647	690	1,197	1,141
Other collective accommodation <sup>1</sup>	51	59	110	82	161
<b>Total</b>	<b>2,371</b>	<b>4,975</b>	<b>4,101</b>	<b>8,066</b>	<b>6,472</b>

\* Revised

<sup>1</sup> Comprises guesthouses, hostels and tourist villages

Note: Totals may not add up due to rounding.

**Table 2. Total nights spent by period and type of accommodation**

Type of accommodation	January*	February		January-February	
	2015	2014	2015	2014	2015
	MALTA				
Hotel	379,297	408,392	443,371	762,153	822,668
5 Star	62,367	82,841	75,700	154,693	138,067
4 Star	213,711	208,692	251,688	379,062	465,399
3 Star	89,179	103,953	102,650	203,958	191,829
2 Star	14,040	12,906	13,333	24,439	27,373
Other collective accommodation <sup>1</sup>	22,534	19,834	22,943	41,668	45,477
<b>Total</b>	<b>401,831</b>	<b>428,227</b>	<b>466,315</b>	<b>803,821</b>	<b>868,145</b>
	Malta				
Hotel	372,704	396,373	433,470	741,045	806,174
of which:					
5 Star	61,736	78,904	73,459	147,595	135,195
4 Star	209,037	202,677	245,554	368,594	454,591
3 Star	88,441	102,628	101,403	201,510	189,844
Other collective accommodation <sup>1</sup>	22,418	19,687	22,728	41,475	45,146
<b>Total</b>	<b>395,122</b>	<b>416,060</b>	<b>456,199</b>	<b>782,520</b>	<b>851,320</b>
	Gozo and Comino				
Hotel	6,593	12,019	9,901	21,108	16,494
of which:					
5 Star	631	3,937	2,241	7,098	2,872
4 Star	4,674	6,015	6,134	10,468	10,808
3 Star	738	1,325	1,247	2,448	1,985
Other collective accommodation <sup>1</sup>	116	148	215	193	331
<b>Total</b>	<b>6,709</b>	<b>12,167</b>	<b>10,116</b>	<b>21,301</b>	<b>16,825</b>

\* Revised

<sup>1</sup> Comprises guesthouses, hostels and tourist villages

Note: Totals may not add up due to rounding.

**Table 3. Net use of bed-places by period and type of accommodation**

Type of accommodation	January*	February		January-February	
	2015	2014	2015	2014	2015
	MALTA				
Hotel	39.8	45.0	50.5	40.1	44.9
5 Star	40.2	42.9	50.2	38.5	45.1
4 Star	45.1	53.5	58.5	46.9	51.4
3 Star	31.1	36.2	39.2	33.2	35.0
2 Star	36.9	35.8	37.5	32.1	37.2
Other collective accommodation <sup>1</sup>	27.4	25.5	30.9	25.3	29.1
<b>Total</b>	<b>38.8</b>	<b>43.5</b>	<b>48.9</b>	<b>38.9</b>	<b>43.6</b>
	Malta				
Hotel	40.4	45.7	51.5	40.6	45.7
of which:					
5 Star	40.2	43.5	51.6	38.6	45.7
4 Star	46.2	54.6	59.7	48.0	52.6
3 Star	31.3	36.3	39.5	33.4	35.2
Other collective accommodation <sup>1</sup>	28.7	26.1	32.1	25.8	30.3
<b>Total</b>	<b>39.5</b>	<b>44.1</b>	<b>50.0</b>	<b>39.4</b>	<b>44.5</b>
	Gozo and Comino				
Hotel	21.2	30.6	27.4	27.4	24.5
of which:					
5 Star	36.8	32.8	27.1	36.3	28.8
4 Star	21.9	31.6	31.8	26.0	26.6
3 Star	17.5	27.2	24.2	24.3	21.2
Other collective accommodation <sup>1</sup>	2.9	5.8	6.0	4.6	4.3
<b>Total</b>	<b>19.1</b>	<b>29.1</b>	<b>25.4</b>	<b>26.2</b>	<b>22.5</b>

\* Revised

<sup>1</sup> Comprises guesthouses, hostels and tourist villages

**Table 4. Establishments with net number of bedrooms and bed-places by period and type of accommodation**

Type of accommodation	February					
	Establishments		Bedrooms		Bed-places	
	2014	2015	2014	2015	2014	2015
	MALTA					
Hotel	109	107	15,232	14,873	32,965	31,732
5 Star	15	14	3,468	2,873	6,904	5,595
4 Star	39	39	6,673	7,257	14,501	15,462
3 Star	43	42	4,497	4,140	10,274	9,383
2 Star	12	12	594	603	1,286	1,292
Other collective accommodation <sup>1</sup>	29	31	1,110	1,084	2,783	2,657
<b>Total</b>	<b>138</b>	<b>138</b>	<b>16,342</b>	<b>15,957</b>	<b>35,748</b>	<b>34,389</b>
	Malta					
Hotel	99	97	14,569	14,201	31,551	30,289
of which:						
5 Star	13	12	3,262	2,658	6,475	5,148
4 Star	35	35	6,351	6,935	13,822	14,774
3 Star	40	39	4,410	4,053	10,090	9,199
Other collective accommodation <sup>1</sup>	26	26	1,070	1,027	2,692	2,528
<b>Total</b>	<b>125</b>	<b>123</b>	<b>15,639</b>	<b>15,228</b>	<b>34,243</b>	<b>32,817</b>
	Gozo and Comino					
Hotel	10	10	663	672	1,414	1,443
of which:						
5 Star	2	2	206	215	429	447
4 Star	4	4	322	322	679	688
3 Star	3	3	87	87	184	184
Other collective accommodation <sup>1</sup>	3	5	40	57	91	129
<b>Total</b>	<b>13</b>	<b>15</b>	<b>703</b>	<b>729</b>	<b>1,505</b>	<b>1,572</b>

<sup>1</sup> Comprises guesthouses, hostels and tourist villages

## Methodological Notes

1. The objective of the Survey on Collective Accommodation Establishments is to estimate the utilisation rate of bed-places of all active collective accommodation establishments in Malta and Gozo. The variables collected from the survey include:

- Number of residents;
- Number of non-residents;
- Nights spent by residents;
- Nights spent by non-residents;
- Number of room nights sold to foreign residents;
- Number of room nights sold to Maltese residents;
- Number of bedrooms;
- Number of bed-places;
- Number of days the establishment was closed during the month under review.

The collection of the above variables and the calculation of occupancy levels are in line with Regulation (EU) No. 692/2011.

2. The survey is distributed monthly to all collective accommodation establishments, namely hotels, guesthouses, hostels and tourist villages.

3. Response Rate:

January 2015	<b>89.3%</b>
February 2015	<b>89.2%</b>

4. In this release figures for January 2015 should be considered as a second estimate while those relating to February 2015 are a first estimate – therefore subject to revision in the ensuing release.

5. The Malta Tourism Authority (MTA) licensing department reclassified all collective accommodation establishments registered as apart-hotels to hotels (refer to Legal Notice 351 of 2012).

6. **Definitions:**

- A **bedroom** is a unit formed by one room or group of rooms constituting an indivisible rental whole in an accommodation establishment or dwelling.
- A **bed-place** in an establishment is determined by the number of persons who can stay overnight in the bed set-up, not taking into account any extra beds that may be provided to clients on request.
- **Residents** are Maltese/Gozitan residents who check in (out) of a collective accommodation establishment. A person is considered to be a Maltese/Gozitan resident if:
  - (a) S/he has lived for most of the past 12 months in Malta/Gozo;
  - (b) S/he has lived in Malta/Gozo for less than 12 months but intends to return within a year to settle here.
- **Non-residents** are foreigners who do not necessarily follow the definition of a tourist and check in (out) of a collective accommodation establishment.
- **Total arrivals** are the number of residents and non-residents altogether.
- **Total nights spent** refer to every night a guest actually spends or is registered to spend in a collective accommodation establishment.
- **Net use of bed-places** is the net occupancy rate calculated for all active accommodation establishments, net of seasonal closures and other temporary closures for renovation, police order, etc. The net use of bed-places is the percentage of the total nights.
- The **average length of stay** is calculated as follows:
$$\frac{\text{total number of nights}}{\text{total number of arrivals}}$$

7. More information relating to this news release may be accessed at:

Statistical Concepts: <http://nso.gov.mt/metadata/concepts.aspx>

Metadata: <http://nso.gov.mt/metadata/reports.aspx?id=35>

Statistical Database: <http://nso.gov.mt/statdb/start>