

Total inbound visitors for May were estimated at 177,895, an increase of 5.5 per cent when compared to the corresponding month of 2014. Excluding the passengers who stayed overnight on board their berthed cruise ship, total inbound tourist trips amounted to 177,203.

## Inbound Tourism: May 2015

A total of 153,104 inbound tourist trips were carried out for holiday purposes, while a further 11,160 were undertaken for business purposes. Inbound tourists from EU Member States went up by 11.3 per cent to 155,306. The largest proportion of inbound tourists were aged between 45 and 64, followed by those within the 25-44 age bracket (Table 1).

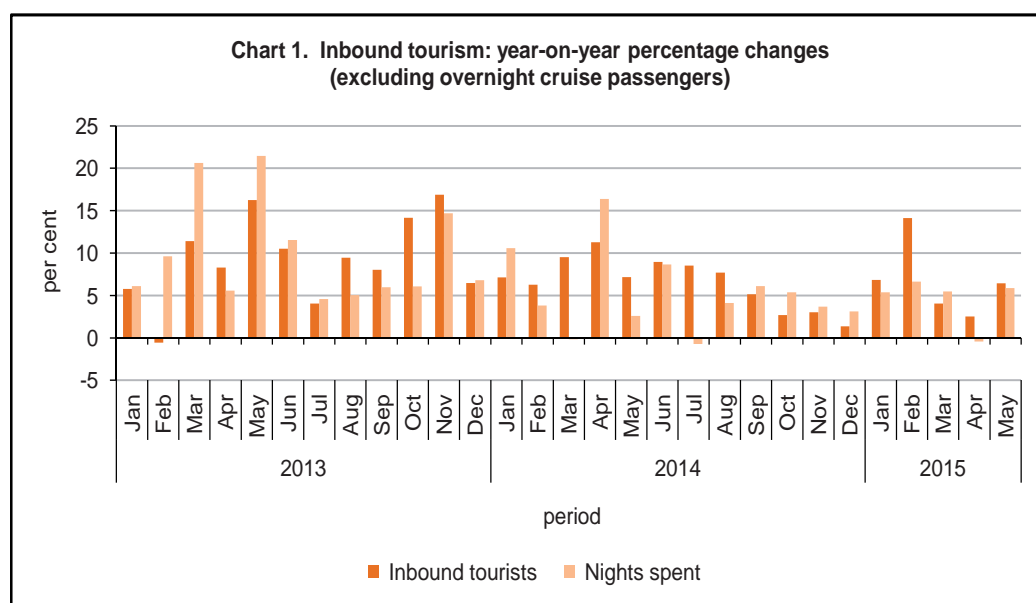
Total nights spent went up by 5.9 per cent when compared to May 2014, reaching 1,215,994 nights. The largest share of guest nights (68.5 per cent) was spent in collective accommodation establishments (Table 3).

Total tourist expenditure was estimated at €149.2 million, an increase of 7.9 per cent over the corresponding month of 2014 (Table 4).

### January-May

Inbound tourist trips from January to May amounted to 579,693, an increase of 5.9 per cent over the same period in 2014 (Table 6). Total nights spent by inbound tourists went up by 4.2 per cent, reaching almost 4.1 million nights (Table 8).

During January-May, total tourism expenditure was estimated at €460.4 million, 7.2 per cent higher than that recorded for 2014 (Table 9). Total per capita expenditure stood at €794, an increase of 1.1 per cent when compared to 2014 (Table 11) ■



Compiled by:

**Unit C3: Population and  
Tourism Statistics**

**Directorate C: Social  
Statistics**

Further information on data:

**Mr Matthew ZERAFA**  
T. +356 2599 7630  
E. matthew.zerafa@gov.mt

Table 1. Profile of inbound tourists by month of departure

Characteristics	May			Change	Percentage change
	2013	2014	2015	2015/2014	
<b>Total inbound visitors</b>	<b>155,771</b>	<b>168,674</b>	<b>177,895</b>	<b>9,221</b>	<b>5.5</b>
Overnight cruise passengers	405	2,177	692	-1,485	-68.2
<b>Inbound tourists</b>	<b>155,366</b>	<b>166,497</b>	<b>177,203</b>	<b>10,706</b>	<b>6.4</b>
<b>Mode of travel:</b>					
Air	151,910	161,888	170,003	8,115	5.0
Sea	3,456	4,609	7,200	2,591	56.2
<b>Sex:</b>					
Males	79,291	84,144	89,646	5,502	6.5
Females	76,075	82,353	87,557	5,205	6.3
<b>Age group:</b>					
0-24	21,362	23,464	24,113	649	-
25-44	46,710	55,815	57,511	1,696	3.0
45-64	55,889	57,337	63,737	6,399	11.2
65 or more	31,405	29,880	31,842	1,962	6.6
<b>Markets:</b>					
EU	131,794	139,541	155,306	15,764	11.3
<i>of which: euro area</i>	71,329	72,873	85,629	12,756	17.5
Non-EU	23,572	26,955	21,897	-5,058	-18.8
<b>Purpose of visit:</b>					
Holiday	133,070	140,383	153,104	12,721	9.1
Business and professional	12,539	13,883	11,160	-2,723	-19.6
Other (including educational, religious and health tourism)	9,757	12,231	12,939	708	-
<b>Organisation of stay:</b>					
Package	75,482	82,729	80,937	-1,792	-2.2
Non-package	79,884	83,768	96,266	12,498	14.9
<b>Frequency:</b>					
First-time tourists	109,751	116,715	127,351	10,636	9.1
Repeat tourists	45,615	49,781	49,852	70	-
once a year or less	33,502	35,907	36,895	988	-
more than once a year	12,112	13,875	12,957	-918	-
<b>Duration of visit:</b>					
1-3 nights	27,821	32,247	32,611	364	-
4-6 nights	35,068	41,243	47,933	6,690	16.2
7 nights or more	92,478	93,007	96,660	3,653	3.9
<b>Average length of stay (nights)</b>	<b>7.2</b>	<b>6.9</b>	<b>6.9</b>	<b>0.0</b>	<b>0.0</b>

Note: Totals may not add up due to rounding.

**Table 2. Inbound tourists by month of departure and type of accommodation**

Type of accommodation	May			Change	Percentage change
	2013	2014	2015		
Private accommodation	34,103	39,450	44,446	4,996	12.7
Collective accommodation*	121,263	127,046	132,757	5,711	4.5
<b>Total tourists</b>	<b>155,366</b>	<b>166,497</b>	<b>177,203</b>	<b>10,706</b>	<b>6.4</b>

\* Comprises hotels, guesthouses, tourist villages, hostels, B&Bs and campsites

Note: Totals may not add up due to rounding.

**Table 3. Total nights spent by inbound tourists by month of departure and type of accommodation**

Type of accommodation	May			Change	Percentage change
	2013	2014	2015		
Private accommodation	316,929	340,539	383,573	43,034	12.6
Collective accommodation*	802,540	807,929	832,421	24,491	3.0
<b>Total nights</b>	<b>1,119,468</b>	<b>1,148,469</b>	<b>1,215,994</b>	<b>67,525</b>	<b>5.9</b>

\* Comprises hotels, guesthouses, tourist villages, hostels, B&Bs and campsites

Note: Totals may not add up due to rounding.

**Table 4. Total expenditure by inbound tourists by month of departure and expenditure category**

€ 000

Expenditure category	May			Change	Percentage change
	2013	2014	2015		
Package	48,506	50,432	52,485	2,053	4.1
Non-package	36,865	35,817	41,241	5,424	15.1
Air/sea fares	19,202	17,859	20,332	2,473	13.8
Accommodation	17,663	17,958	20,909	2,951	16.4
Other expenditure	48,335	51,983	55,461	3,478	6.7
<b>Total expenditure</b>	<b>133,705</b>	<b>138,232</b>	<b>149,187</b>	<b>10,955</b>	<b>7.9</b>

Notes:

1. Expenditure estimates are rounded to the nearest thousand euro.
2. Totals may not add up due to rounding.

**Table 5. Inbound tourists, nights spent and total expenditure by month of departure and country of residence**

Country of residence	May			Change	Percentage change
	2013	2014	2015	2015/2014	
<b>Tourists</b>					
<b>EU</b>	<b>131,794</b>	<b>139,541</b>	<b>155,306</b>	<b>15,764</b>	<b>11.3</b>
<i>of which:</i>					
France	16,034	18,284	18,606	322	-
Germany	11,925	10,249	12,221	1,973	19.2
Italy	17,993	19,831	25,815	5,983	30.2
United Kingdom	43,133	48,856	49,665	810	-
<b>Non-EU</b>	<b>23,572</b>	<b>26,955</b>	<b>21,897</b>	<b>-5,058</b>	<b>-18.8</b>
<b>Total</b>	<b>155,366</b>	<b>166,497</b>	<b>177,203</b>	<b>10,706</b>	<b>6.4</b>
<b>Nights</b>					
<b>EU</b>	<b>930,532</b>	<b>963,398</b>	<b>1,063,260</b>	<b>99,862</b>	<b>10.4</b>
<i>of which:</i>					
France	103,027	121,065	119,734	-1,331	-
Germany	93,938	83,885	93,948	10,063	12.0
Italy	78,783	95,951	144,529	48,578	50.6
United Kingdom	358,680	374,106	374,765	660	-
<b>Non-EU</b>	<b>188,936</b>	<b>185,071</b>	<b>152,734</b>	<b>-32,337</b>	<b>-17.5</b>
<b>Total</b>	<b>1,119,468</b>	<b>1,148,469</b>	<b>1,215,994</b>	<b>67,525</b>	<b>5.9</b>
<b>Expenditure (€000)</b>					
<b>EU</b>	<b>104,722</b>	<b>108,618</b>	<b>124,459</b>	<b>15,842</b>	<b>14.6</b>
<i>of which:</i>					
France	13,655	15,330	15,386	56	-
Germany	11,182	9,869	11,771	1,902	19.3
Italy	9,331	11,137	13,307	2,170	19.5
United Kingdom	35,393	38,889	44,018	5,129	-
<b>Non-EU</b>	<b>28,984</b>	<b>29,615</b>	<b>24,728</b>	<b>-4,887</b>	<b>-16.5</b>
<b>Total</b>	<b>133,705</b>	<b>138,232</b>	<b>149,187</b>	<b>10,955</b>	<b>7.9</b>

Notes:

1. Expenditure estimates are rounded to the nearest thousand euro.
2. Totals may not add up due to rounding.

**Table 6. Profile of inbound tourists by period of departure**

Characteristics	January-May			Change	Percentage change
	2013	2014	2015	2015/2014	
<b>Total inbound visitors</b>	<b>507,044</b>	<b>551,328</b>	<b>582,027</b>	<b>30,699</b>	<b>5.6</b>
Overnight cruise passengers	2,889	4,019	2,334	-1,685	-41.9
<b>Inbound tourists</b>	<b>504,155</b>	<b>547,309</b>	<b>579,693</b>	<b>32,384</b>	<b>5.9</b>
<b>Mode of travel:</b>					
Air	490,151	530,910	560,330	29,420	5.5
Sea (see note 2)	14,004	16,399	19,363	2,964	18.1
<b>Sex:</b>					
Males	263,267	287,634	304,349	16,715	5.8
Females	240,887	259,675	275,344	15,669	6.0
<b>Age group:</b>					
0-24	76,019	88,878	90,752	1,875	2.1
25-44	144,618	175,758	182,655	6,896	3.9
45-64	182,756	192,921	202,329	9,408	4.9
65 or more	100,762	89,751	103,957	14,206	15.8
<b>Markets:</b>					
EU	429,933	452,581	502,882	50,301	11.1
<i>of which: euro area</i>	236,087	240,773	276,759	35,986	14.9
Non-EU	74,221	94,728	76,811	-17,917	-18.9
<b>Purpose of visit:</b>					
Holiday	413,990	443,613	475,239	31,627	7.1
Business and professional	46,761	54,981	51,441	-3,540	-6.4
Other (including educational, religious and health tourism)	43,404	48,715	53,012	4,298	8.8
<b>Organisation of stay:</b>					
Package	243,324	256,339	268,100	11,761	4.6
Non-package	260,830	290,969	311,592	20,623	7.1
<b>Frequency:</b>					
First-time tourists	333,799	364,873	399,130	34,257	9.4
Repeat tourists	170,356	182,436	180,562	-1,873	-1.0
once a year or less	115,550	121,464	124,149	2,686	2.2
more than once a year	54,806	60,972	56,413	-4,559	-7.5
<b>Duration of visit:</b>					
1-3 nights	99,500	117,320	115,592	-1,728	-1.5
4-6 nights	126,589	145,064	165,162	20,098	13.9
7 nights or more	278,066	284,925	298,939	14,015	4.9
<b>Average length of stay (nights)</b>	<b>7.3</b>	<b>7.2</b>	<b>7.1</b>	<b>-0.1</b>	<b>-1.4</b>

Notes:

1. Totals may not add up due to rounding.
2. Data on sea passengers is provisional. For more information refer to the methodological notes.

**Table 7. Inbound tourists by period of departure and type of accommodation**

Type of accommodation	January-May			Change	Percentage change
	2013	2014	2015	2015/2014	
Private accommodation	111,872	122,695	135,663	12,968	10.6
Collective accommodation*	392,283	424,614	444,029	19,416	4.6
<b>Total tourists</b>	<b>504,155</b>	<b>547,309</b>	<b>579,693</b>	<b>32,384</b>	<b>5.9</b>

\* Comprises hotels, guesthouses, tourist villages, hostels, B&Bs and campsites

Note: Totals may not add up due to rounding.

**Table 8. Total nights spent by inbound tourists by period of departure and type of accommodation**

Type of accommodation	January-May			Change	Percentage change
	2013	2014	2015	2015/2014	
Private accommodation	1,040,859	1,172,594	1,270,130	97,535	8.3
Collective accommodation*	2,640,399	2,753,562	2,820,749	67,187	2.4
<b>Total nights</b>	<b>3,681,258</b>	<b>3,926,156</b>	<b>4,090,878</b>	<b>164,722</b>	<b>4.2</b>

\* Comprises hotels, guesthouses, tourist villages, hostels, B&Bs and campsites

Note: Totals may not add up due to rounding.

**Table 9. Inbound tourists, nights spent and total expenditure by period of departure and country of residence**

Country of residence	January-May			Change	Percentage change	
	2013	2014	2015	2015/2014		
<b>Tourists</b>	Austria	10,621	10,035	11,814	1,779	17.7
	Belgium	10,647	10,827	12,844	2,017	18.6
	France	39,797	43,819	47,515	3,695	8.4
	Germany	52,810	46,449	51,755	5,305	11.4
	Ireland	10,929	11,228	11,946	718	-
	Italy	73,512	82,083	96,303	14,221	17.3
	Libya	10,140	20,119	2,896	-17,223	-85.6
	Netherlands	14,008	13,690	14,180	490	-
	Russia	8,352	10,097	4,774	-5,323	-52.7
	Scandinavia*	27,602	31,229	32,088	860	-
	Spain	13,632	9,732	12,519	2,787	28.6
	Switzerland	7,735	10,130	10,715	585	-
	United Kingdom	152,135	165,646	171,702	6,056	3.7
	USA	6,573	8,331	7,022	-1,309	-
	Other	65,662	73,892	91,620	17,728	24.0
	<b>Total</b>	<b>504,155</b>	<b>547,309</b>	<b>579,693</b>	<b>32,384</b>	<b>5.9</b>
<b>Nights</b>	Austria	78,963	69,967	79,688	9,721	13.9
	Belgium	76,076	73,357	85,446	12,089	16.5
	France	250,257	284,154	305,722	21,568	7.6
	Germany	410,904	370,005	406,731	36,726	9.9
	Ireland	82,945	89,591	84,736	-4,855	-
	Italy	332,225	398,951	539,880	140,930	35.3
	Libya	51,065	132,448	20,872	-111,576	-84.2
	Netherlands	103,183	90,035	93,587	3,552	-
	Russia	89,628	107,653	38,793	-68,860	-64.0
	Scandinavia*	193,551	213,762	228,085	14,323	-
	Spain	75,413	62,195	76,208	14,013	22.5
	Switzerland	59,560	65,596	69,013	3,417	-
	United Kingdom	1,327,324	1,357,975	1,359,448	1,473	0.1
	USA	44,917	50,089	47,091	-2,998	-
	Other	505,247	560,380	655,578	95,198	17.0
	<b>Total</b>	<b>3,681,258</b>	<b>3,926,156</b>	<b>4,090,878</b>	<b>164,722</b>	<b>4.2</b>
<b>Expenditure (€000)</b>	Austria	9,775	8,858	10,040	1,182	13.3
	Belgium	8,472	9,734	10,648	913	9.4
	France	31,665	34,090	37,080	2,990	8.8
	Germany	45,455	41,197	46,212	5,015	12.2
	Ireland	8,899	8,587	9,522	935	-
	Italy	37,391	43,188	51,289	8,101	18.8
	Libya	10,556	19,876	3,195	-16,681	-83.9
	Netherlands	11,567	9,919	11,032	1,112	-
	Russia	11,522	12,650	5,431	-7,219	-57.1
	Scandinavia*	22,945	25,865	27,028	1,163	-
	Spain	8,295	6,844	8,655	1,810	26.4
	Switzerland	8,517	10,704	11,548	844	-
	United Kingdom	110,974	122,883	138,641	15,758	12.8
	USA	8,086	8,823	8,545	-278	-
	Other	64,989	66,368	81,531	15,163	22.8
	<b>Total</b>	<b>399,107</b>	<b>429,588</b>	<b>460,396</b>	<b>30,808</b>	<b>7.2</b>

\* Denmark, Finland, Norway and Sweden

Notes:

1. Expenditure estimates are rounded to the nearest thousand euro.
2. Totals may not add up due to rounding.

**Table 10. Total expenditure of inbound tourists by expenditure category, period of departure and country of residence**

€ 000

Country of residence	Package expenditure	Non-package expenditure		Other expenditure	Total
		Air/sea fares	Accommodation		
	January-May 2015				
Austria	5,235	939	709	3,157	10,040
Belgium	4,681	1,462	1,040	3,464	10,648
France	17,606	4,076	4,202	11,196	37,080
Germany	23,105	4,288	5,011	13,809	46,212
Ireland	2,300	1,260	1,653	4,309	9,522
Italy	14,640	6,433	8,657	21,560	51,289
Libya	166	1,029	701	1,299	3,195
Netherlands	3,882	1,577	1,435	4,139	11,032
Russia	885	1,363	837	2,345	5,431
Scandinavia*	7,770	4,253	3,962	11,043	27,028
Spain	2,108	1,276	1,401	3,870	8,655
Switzerland	4,314	1,805	1,295	4,134	11,548
United Kingdom	52,474	17,805	16,322	52,039	138,641
USA	1,399	2,660	1,623	2,864	8,545
Other	18,559	17,491	12,470	33,011	81,531
<b>Total</b>	<b>159,124</b>	<b>67,716</b>	<b>61,317</b>	<b>172,239</b>	<b>460,396</b>
	<b>January-May 2014</b>				
Austria	4,142	887	834	2,995	8,858
Belgium	4,023	1,252	1,185	3,274	9,734
France	15,806	4,156	3,786	10,343	34,090
Germany	21,526	3,461	3,825	12,385	41,197
Ireland	2,060	1,235	1,395	3,897	8,587
Italy	12,191	5,886	6,881	18,229	43,188
Libya	1,255	4,985	3,639	9,997	19,876
Netherlands	2,979	1,661	1,469	3,811	9,919
Russia	2,622	2,100	1,977	5,951	12,650
Scandinavia*	8,160	3,857	3,564	10,284	25,865
Spain	1,532	1,094	1,216	3,002	6,844
Switzerland	4,533	1,420	1,128	3,623	10,704
United Kingdom	46,849	15,482	12,872	47,680	122,883
USA	2,097	2,411	1,642	2,673	8,823
Other	16,029	13,266	10,330	26,744	66,368
<b>Total</b>	<b>145,806</b>	<b>63,153</b>	<b>55,741</b>	<b>164,888</b>	<b>429,588</b>
	<b>January-May 2013</b>				
Austria	4,624	1,078	1,141	2,932	9,775
Belgium	3,287	1,307	962	2,917	8,472
France	14,500	3,654	3,517	9,994	31,665
Germany	25,174	3,870	3,386	13,025	45,455
Ireland	2,295	1,178	1,207	4,219	8,899
Italy	10,945	5,095	6,138	15,213	37,391
Libya	876	2,483	1,797	5,401	10,556
Netherlands	4,347	1,463	1,314	4,444	11,567
Russia	3,137	1,759	1,610	5,015	11,522
Scandinavia*	6,975	3,451	3,199	9,320	22,945
Spain	2,093	1,231	1,127	3,844	8,295
Switzerland	3,290	1,326	953	2,948	8,517
United Kingdom	43,259	14,373	11,380	41,961	110,974
USA	1,389	2,647	1,598	2,452	8,086
Other	14,208	14,662	9,272	26,847	64,989
<b>Total</b>	<b>140,399</b>	<b>59,576</b>	<b>48,599</b>	<b>150,533</b>	<b>399,107</b>

\* Denmark, Finland, Norway and Sweden



**Table 11. Per capita expenditure of inbound tourists by expenditure category, period of departure and country of residence**

€

Country of residence	Package expenditure	Non-package expenditure		Other expenditure	Total expenditure per capita
		Air/sea fares	Accommodation		
<b>January-May 2015</b>					
Austria	639	260	279	267	<b>850</b>
Belgium	743	224	235	270	<b>829</b>
France	613	217	258	236	<b>780</b>
Germany	673	246	357	267	<b>893</b>
Ireland	474	178	273	361	<b>797</b>
Italy	425	104	182	224	<b>533</b>
Libya	476	404	322	449	<b>1,103</b>
Netherlands	580	211	240	292	<b>778</b>
Russia	803	371	282	491	<b>1,138</b>
Scandinavia*	542	240	277	344	<b>842</b>
Spain	475	158	238	309	<b>691</b>
Switzerland	841	323	275	386	<b>1,078</b>
United Kingdom	608	209	278	303	<b>807</b>
USA	1,307	447	341	408	<b>1,217</b>
Other	584	292	258	360	<b>890</b>
<b>Total expenditure per capita</b>	<b>594</b>	<b>217</b>	<b>257</b>	<b>297</b>	<b>794</b>
<b>January-May 2014</b>					
Austria	631	255	279	298	<b>883</b>
Belgium	702	246	316	302	<b>899</b>
France	641	217	238	236	<b>778</b>
Germany	669	242	337	267	<b>887</b>
Ireland	458	184	261	347	<b>765</b>
Italy	379	118	172	222	<b>526</b>
Libya	460	287	240	497	<b>988</b>
Netherlands	524	208	225	278	<b>725</b>
Russia	707	329	359	589	<b>1,253</b>
Scandinavia*	551	235	262	329	<b>828</b>
Spain	475	168	227	308	<b>703</b>
Switzerland	835	302	314	358	<b>1,057</b>
United Kingdom	553	191	247	288	<b>742</b>
USA	868	408	348	321	<b>1,059</b>
Other	574	288	287	362	<b>898</b>
<b>Total expenditure per capita</b>	<b>569</b>	<b>217</b>	<b>251</b>	<b>301</b>	<b>785</b>
<b>January-May 2013</b>					
Austria	651	306	379	276	<b>920</b>
Belgium	615	247	254	274	<b>796</b>
France	651	208	232	251	<b>796</b>
Germany	669	255	293	247	<b>861</b>
Ireland	461	198	253	386	<b>814</b>
Italy	390	112	162	207	<b>509</b>
Libya	454	302	236	533	<b>1,041</b>
Netherlands	584	223	249	317	<b>826</b>
Russia	893	363	367	600	<b>1,379</b>
Scandinavia*	562	227	261	338	<b>831</b>
Spain	413	144	167	282	<b>608</b>
Switzerland	788	373	374	381	<b>1,101</b>
United Kingdom	558	193	256	276	<b>729</b>
USA	1,037	506	396	373	<b>1,230</b>
Other	579	356	283	409	<b>990</b>
<b>Total expenditure per capita</b>	<b>577</b>	<b>228</b>	<b>248</b>	<b>299</b>	<b>792</b>

\* Denmark, Finland, Norway and Sweden

Table 12. Profile of overnight cruise passengers by month of departure

Characteristics	May			Change	Percentage change
	2013	2014	2015		
<b>Total overnight cruise passengers</b>	<b>405</b>	<b>2,177</b>	<b>692</b>	<b>-1,485</b>	<b>-68.2</b>
<b>Sex:</b>					
Males	177	1,010	333	-677	-67.0
Females	228	1,167	359	-808	-69.2
<b>Age group:</b>					
0-19	7	45	3	-42	-93.3
20-39	13	198	26	-172	-86.9
40-59	70	583	141	-442	-75.8
60-79	291	1,205	463	-742	-61.6
80 or more	24	146	59	-87	-59.6
<b>Markets:</b>					
EU	324	1,608	181	-1,427	-88.7
<i>of which</i> : euro area	322	1,454	88	-1,366	-93.9
Non-EU	81	569	511	-58	-10.2

Table 13. Profile of overnight cruise passengers by period of departure

Characteristics	January-May			Change	Percentage change
	2013	2014	2015		
<b>Total overnight cruise passengers</b>	<b>2,889</b>	<b>4,019</b>	<b>2,334</b>	<b>-1,685</b>	<b>-41.9</b>
<b>Sex:</b>					
Males	1,296	1,871	1,097	-774	-41.4
Females	1,593	2,148	1,237	-911	-42.4
<b>Age group:</b>					
0-19	22	149	33	-116	-77.9
20-39	78	295	85	-210	-71.2
40-59	385	973	322	-651	-66.9
60-79	2,065	2,312	1,564	-748	-32.4
80 or more	339	290	330	40	13.8
<b>Markets:</b>					
EU	2,097	3,361	1,317	-2,044	-60.8
<i>of which</i> : euro area	1,403	3,173	1,182	-1,991	-62.7
Non-EU	792	658	1,017	359	54.6

## Methodological Notes

1. This release focuses on Inbound Tourism, which comprises the activities of non-resident visitors travelling to Malta (i.e. outside their usual environment), and staying for not more than 12 consecutive months for leisure, business or other (corresponding) purposes.
2. The results in this release are based on the ongoing frontier survey known as Tourstat. Data for tourist air departures is collected by means of personal interviews through a continuous survey at the departure lounge of the Malta International Airport (MIA). Personal interviews are carried out. A two-stage sampling design is used to survey air passengers. In the first stage alternate days are selected, whereby a sample of passengers is selected systematically within each shift.
3. Tourstat measures the number of tourist trips carried out during a particular reference month. These differ from the number of tourists in that the same person can make more than one trip during the same period.
4. Tourist sea departures are collected through a regular survey, conducted during three separate months every year at the Valletta Cruise Port. A quota sample is used to conduct sea passenger departures in which survey interviewers are guided to select people according to some fixed quota. Survey data is supplemented by administrative data provided by ferry operators.
5. Under-represented figures are indicated where applicable for each table and should be treated with caution. Users should also exercise caution when analysing figures that involve estimates relating to less than 1,500 tourists. Such estimates may be subject to variations attributable to low frequency in the sample (sampling errors). Other limitations may involve non-sampling errors, namely those linked to respondents' willingness to provide proper information and those related to language barriers.
6. Percentage changes for tourists based on counts of less than 1,500 are not presented due to sampling errors.
7. The expenditure data in this release should not be equated to national tourism earnings.
8. The monthly passenger departures data published by the Malta International Airport cannot be equated to the number of inbound tourists because the former is inclusive of departing Maltese and transit passengers.
9. Data on cruise passengers who spent at least one night berthed on board their cruiseship is compiled on the basis of administrative records held by Transport Malta.
10. Arrivals and nights spent in time-share accommodation are being categorised in 'Private Accommodation' instead of 'Collective Accommodation' as per Eurostat recommendation. In this regard, there may be minor differences in these statistics and statistics published in tourism supply due to the fact that hotels report time-share under 'Collective Accommodation'.
11. **Definitions:**
  - **Traveller:** A person who moves between different geographic locations, for any purpose and any duration.
  - **Visitor:** The three fundamental criteria used to distinguish visitors from travellers are:
    - a. **The trip should be to a place other than that of the usual environment**, which would exclude short-distance local transport and commuting, i.e. more or less regular trips between the place of work/study and the place of residence;
    - b. **The stay in the place visited should not last more than twelve consecutive months**, beyond which the visitor would become a resident of that place (from the statistical standpoint);
    - c. **The main purpose of the visit should be other than the exercise of an activity remunerated from within the place visited**, which would exclude migratory movements for work purposes.

Visitors (domestic/international) comprise tourists and same-day visitors.

  - **Tourist:** A visitor who stays at least one night in collective or private accommodation in the place/country visited.
  - **Same-day visitor:** A visitor who does not spend the night in collective or private accommodation in the place/country visited.
12. More information relating to this news release may be accessed at:  
Statistical Concepts: <http://nso.gov.mt/metadata/concepts.aspx>  
Metadata: <http://nso.gov.mt/metadata/reports.aspx?id=37>  
Statistical Database: <http://nso.gov.mt/statdb/start>