

Total arrivals and nights spent in collective accommodation establishments during May 2015 increased by 0.5 and 1.5 per cent respectively when compared to the corresponding month in 2014.

Collective Accommodation Establishments: May 2015

Cut-off date:
20 July 2015

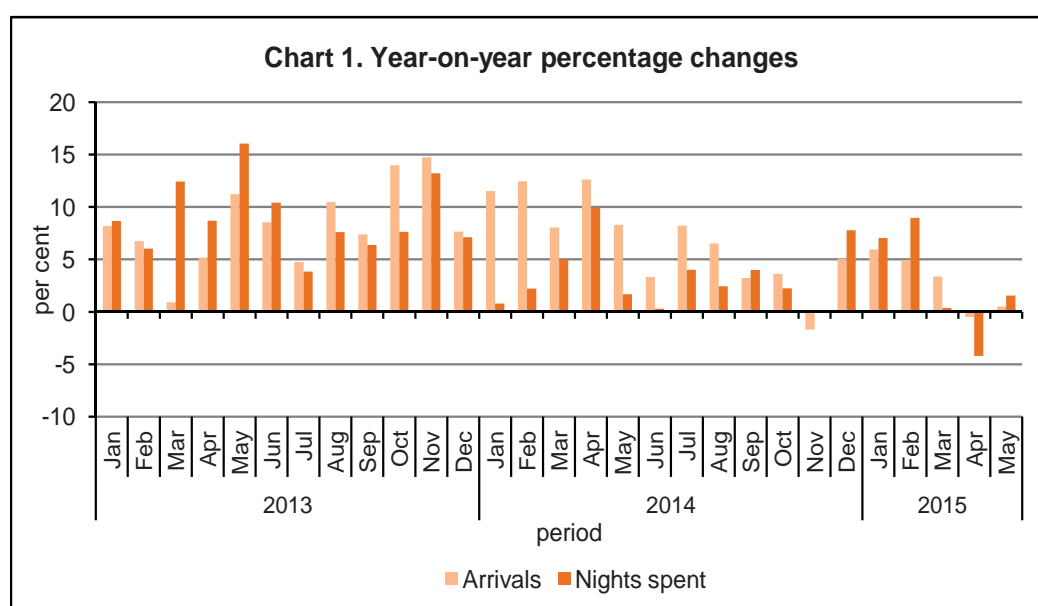
In May, total arrivals in collective accommodation establishments numbered 155,758, while total nights spent amounted to 827,973. Collective accommodation categories registered increases in total nights spent, with the exception of 5-star and 2-star hotels. The largest share of guest nights was reported in 4-star hotels, accounting for 383,230 nights, or 46.3 per cent of the total (Tables 1 and 2).

The average length of stay in collective accommodation establishments stood at 5.3 nights during the month under review, at par with May 2014. The net use of bed-places stood at 69.0 per cent, up by 2.4 percentage points when compared to the corresponding month last year (Table 3).

On a national level, there were 159 active collective accommodation establishments during May, with a net capacity of 17,825 bedrooms and 38,804 bed-places (Table 4).

January-May

Total arrivals during the first five months of 2015 amounted to 572,409, an increase of 2.1 per cent over the same period in 2014 (Table 1). Total nights spent went up by 1.6 per cent, reaching nearly 3.0 million (Table 2). The net use of bed-places advanced by 2.6 percentage points to 55.2 per cent (Table 3) ■



Compiled by:

**Unit C3: Population and
Tourism Statistics**

**Directorate C: Social
Statistics**

Further information on data:

Mr Matthew ZERAFA
T. +356 2599 7630
E. matthew.zerafa@gov.mt

Table 1. Total arrivals by period, region and type of accommodation

Type of accommodation	April*	May		January-May	
	2015	2014	2015	2014	2015
	MALTA				
Hotel	138,316	148,638	149,623	540,454	554,558
5 Star	32,432	38,638	36,955	146,834	138,102
4 Star	60,831	64,705	66,514	241,102	258,410
3 Star	41,220	41,143	42,274	138,589	144,415
2 Star	3,833	4,153	3,879	13,929	13,632
Other collective accommodation ¹	4,225	6,345	6,135	19,954	17,851
Total	142,540	154,983	155,758	560,408	572,409
	Malta				
Hotel	131,656	140,200	140,536	511,334	526,893
of which:					
5 Star	30,416	36,848	34,556	139,008	131,147
4 Star	57,853	59,850	61,520	226,497	243,579
3 Star	40,102	39,989	41,096	134,158	140,138
Other collective accommodation ¹	3,999	6,114	5,789	19,270	17,002
Total	135,654	146,314	146,325	530,604	543,895
	Gozo and Comino				
Hotel	6,660	8,438	9,087	29,120	27,665
of which:					
5 Star	2,016	1,790	2,399	7,826	6,955
4 Star	2,978	4,855	4,994	14,605	14,831
3 Star	1,118	1,154	1,178	4,431	4,277
Other collective accommodation ¹	226	231	346	685	849
Total	6,886	8,669	9,433	29,805	28,514

* Revised

¹ Comprises guesthouses, hostels and tourist villages

Note: Totals may not add up due to rounding.

Table 2. Total nights spent by period, region and type of accommodation

Type of accommodation	April*	May		January-May	
	2015	2014	2015	2014	2015
	MALTA				
Hotel	688,700	774,297	783,995	2,789,934	2,837,512
5 Star	134,027	159,136	158,412	565,504	530,434
4 Star	341,886	376,042	383,230	1,383,208	1,479,680
3 Star	192,908	216,587	221,445	755,901	743,790
2 Star	19,879	22,531	20,908	85,321	83,608
Other collective accommodation ¹	32,382	41,116	43,978	151,806	151,995
Total	721,082	815,413	827,973	2,941,740	2,989,507
	Malta				
Hotel	668,872	747,166	753,316	2,703,772	2,753,765
of which:					
5 Star	127,689	152,445	150,248	540,107	508,134
4 Star	332,339	359,506	364,768	1,337,032	1,431,851
3 Star	190,326	214,231	218,757	746,441	734,434
Other collective accommodation ¹	31,798	40,334	42,990	149,796	149,808
Total	700,670	787,500	796,306	2,853,568	2,903,573
	Gozo and Comino				
Hotel	19,828	27,131	30,679	86,162	83,747
of which:					
5 Star	6,338	6,691	8,164	25,397	22,300
4 Star	9,547	16,536	18,462	46,176	47,829
3 Star	2,582	2,356	2,688	9,460	9,356
Other collective accommodation ¹	584	782	988	2,010	2,187
Total	20,412	27,913	31,667	88,172	85,934

* Revised

¹ Comprises guesthouses, hostels and tourist villages

Note: Totals may not add up due to rounding.

Table 3. Net use of bed-places by period, region and type of accommodation

Type of accommodation	April*	May		January-May	
	2015	2014	2015	2014	2015
	MALTA				
Hotel	65.2	68.5	70.5	54.1	56.7
5 Star	68.8	74.3	78.7	54.5	60.5
4 Star	69.9	72.6	74.7	61.0	62.2
3 Star	58.1	60.9	62.4	45.7	47.9
2 Star	49.6	51.6	49.7	42.2	43.3
Other collective accommodation ¹	38.2	43.7	49.1	34.4	36.4
Total	63.2	66.6	69.0	52.5	55.2
	Malta				
Hotel	66.0	69.3	71.2	54.7	57.5
of which:					
5 Star	70.4	75.9	80.1	55.2	61.6
4 Star	71.0	73.7	75.6	62.1	63.2
3 Star	58.3	61.2	62.6	45.9	48.1
Other collective accommodation ¹	39.5	44.9	50.6	35.2	37.8
Total	64.1	67.4	69.7	53.2	55.9
	Gozo and Comino				
Hotel	45.8	51.4	57.4	39.8	40.1
of which:					
5 Star	47.3	50.3	58.9	43.0	43.6
4 Star	46.3	55.2	61.5	41.2	42.5
3 Star	46.8	41.3	47.1	35.0	35.6
Other collective accommodation ¹	13.4	18.8	22.0	12.8	10.7
Total	42.8	49.0	54.7	37.9	37.5

* Revised

¹ Comprises guesthouses, hostels and tourist villages

Table 4. Establishments with net number of bedrooms and bed-places by period, region and type of accommodation

Type of accommodation	May					
	Establishments		Bedrooms		Bed-places	
	2014	2015	2014	2015	2014	2015
	MALTA					
Hotel	122	119	16,844	16,618	36,532	35,890
5 Star	15	15	3,468	3,451	6,905	6,496
4 Star	45	43	7,695	7,516	16,706	16,541
3 Star	48	49	5,032	5,039	11,513	11,496
2 Star	14	12	649	612	1,408	1,357
Other collective accommodation ¹	39	40	1,234	1,207	3,035	2,914
Total	161	159	18,078	17,825	39,567	38,804
	Malta					
Hotel	111	108	16,040	15,805	34,830	34,167
of which:						
5 Star	13	13	3,262	3,236	6,476	6,049
4 Star	40	38	7,232	7,053	15,739	15,573
3 Star	45	46	4,945	4,952	11,329	11,312
Other collective accommodation ¹	34	34	1,173	1,142	2,901	2,769
Total	145	142	17,213	16,947	37,731	36,936
	Gozo and Comino					
Hotel	11	11	804	813	1,702	1,723
of which:						
5 Star	2	2	206	215	429	447
4 Star	5	5	463	463	967	968
3 Star	3	3	87	87	184	184
Other collective accommodation ¹	5	6	61	65	134	145
Total	16	17	865	878	1,836	1,868

¹ Comprises guesthouses, hostels and tourist villages

Methodological Notes

1. The objective of the Survey on Collective Accommodation Establishments is to estimate the utilisation rate of bed-places of all active collective accommodation establishments in Malta and Gozo. The variables collected from the survey include:

- Number of residents;
- Number of non-residents;
- Nights spent by residents;
- Nights spent by non-residents;
- Number of room nights sold to foreign residents;
- Number of room nights sold to Maltese residents;
- Number of bedrooms;
- Number of bed-places;
- Number of days the establishment was closed during the month under review.

The collection of the above variables and the calculation of occupancy levels are in line with Regulation (EU) No. 692/2011.

2. The survey is distributed monthly to all collective accommodation establishments, namely hotels, guesthouses, hostels and tourist villages.

3. Response Rate:

April 2015	88.7%
May 2015	89.0%

4. In this release figures for April 2015 should be considered as a second estimate while those relating to May 2015 are a first estimate, therefore subject to revision in the ensuing release.

5. The Malta Tourism Authority (MTA) licensing department reclassified all collective accommodation establishments registered as apart-hotels to hotels (refer to Legal Notice 351 of 2012).

6. **Definitions:**

- **Bedroom:** a unit formed by one room or group of rooms constituting an indivisible rental whole in an accommodation establishment or dwelling.
- **Bed-place:** in an establishment, this is determined by the number of persons who can stay overnight in the establishment, not taking into account any extra beds that may be provided to clients on request.
- **Residents:** Maltese/Gozitan residents who check into/out of a collective accommodation establishment. A person is considered to be a Maltese/Gozitan resident if:
 - (a) S/he has lived for most of the past 12 months in Malta/Gozo;
 - (b) S/he has lived in Malta/Gozo for less than 12 months but intends to return within a year to settle here.
- **Non-residents:** foreigners who do not necessarily follow the definition of a tourist and check into/out of a collective accommodation establishment.
- **Total arrivals:** the number of residents and non-residents altogether.
- **Total nights spent:** nights which a guest actually spends or is registered to spend in a collective accommodation establishment.
- **Net use of bed-places:** the net occupancy rate calculated for all active accommodation establishments, net of seasonal closures and other temporary closures. The occupancy of bed-places is calculated by dividing the total nights during the reference period by the number of bed-places and the number of days when the bed-places are actually available for use during the reference period. The result is then multiplied by 100 to express the occupancy rate as a percentage.
- **Average length of stay:** this is calculated as follows:
$$\frac{\text{total number of nights}}{\text{total number of arrivals}}$$

7. More information relating to this news release may be accessed at:

Statistical Concepts: <http://nso.gov.mt/metadata/concepts.aspx>

Metadata: <http://nso.gov.mt/metadata/reports.aspx?id=35>

Statistical Database: <http://nso.gov.mt/statdb/start>