

18 November 2015 | 1100 hrs | 212/2015

Students in formal education during academic year 2013/2014 amounted to 69,531 and remained at par with previous year levels. Overall, male students slightly exceeded female students.

## Student Enrolments: 2013/2014

State run institutions housed 69.0 per cent of total enrolments, while students attending church and independent schools numbered 15,588 and 5,958 respectively (Table 1). During 2013/2014, female students in tertiary education (ISCED levels 5 to 8) outnumbered males, and comprised 54.9 per cent of total students at these levels (Table 2).

Total students enrolled in mandatory education during 2013/2014 stood at 45,845. Of these, 24,040 attended primary school, while 21,805 attended secondary school. Albeit an overall decrease in total enrolments, students attending primary schools increased by 1.8 per cent over 2012/2013 (Table 3).

The average class size at primary level was lowest in state schools, followed by independent and by church schools. On the other hand, independent schools at secondary level held the smallest number of students per class (Table 4).

During 2013/2014, 5.0 per cent of the total students enrolled in formal education were foreigners. This resulted in an increase of 0.7 percentage points over the previous year. The highest proportions of foreign students were present in tertiary education (6.8 per cent) and primary education (6.0 per cent). An increase of 0.5 percentage points over 2012/2013 was reported in foreigners attending post-secondary general education. The majority of foreign students were EU nationals (Table 5).

The most popular field of study among tertiary students was social sciences, business and law (34.4 per cent), followed by health and welfare (17.9 per cent) and science (14.0 per cent) (Table 6). Engineering and science were mostly popular among male students, while females had a stronger presence in education and health (Chart 2).

In the vocational sphere, the largest share of students were enrolled in the field of engineering, manufacturing and construction (21.9 per cent of students), followed by the sciences (20.3 per cent of students) and services (17.1 per cent of students) (Table 8).

Compiled by:

**Unit C4: Education and  
Information Society  
Statistics**

**Directorate C: Social  
Statistics**

Further information on data:

**Ms Sue Ann SCOTT  
DRAGO**

T. +356 2599 7611

E. sueann.scott-drago@gov.mt

The most popular foreign language studied at secondary level was Italian (61.0 per cent), followed by French (33.3 per cent), German (9.7 per cent) and Spanish (8.1 per cent) (Chart 3) ■

Table 1. Students enrolled by type of school, academic year and ISCED level

ISCED 2011	State	Church	Independent	Total
<b>Academic year 2013/2014</b>				
ISCED 1	13,569	7,436	3,067	24,072
ISCED 2	6,899	4,344	1,569	12,812
ISCED 3	12,291	3,808	1,322	17,421
ISCED 4	2,651	-	-	2,651
ISCED 5	2,147	-	-	2,147
ISCED 6	6,914*	-	-	6,914
ISCED 7	3,419*	-	-	3,419
ISCED 8	95	-	-	95
<b>Total</b>	<b>47,985</b>	<b>15,588</b>	<b>5,958</b>	<b>69,531</b>
<b>Academic year 2012/2013</b>				
ISCED 1	13,578	7,150	2,927	23,655
ISCED 2	7,413	4,560	1,244	13,217
ISCED 3	12,769	3,823	1,180	17,772
ISCED 4	2,366	-	-	2,366
ISCED 5	2,466	-	-	2,466
ISCED 6	6,914*	-	-	6,914
ISCED 7	3,116*	-	-	3,116
ISCED 8	78	-	-	78
Not available**	254	-	-	254
<b>Total</b>	<b>48,954</b>	<b>15,533</b>	<b>5,351</b>	<b>69,838</b>
<b>Percentage change</b>				
		<u>2013/2014</u> <u>2012/2013</u>		
ISCED 1	<b>-0.1</b>	<b>4.0</b>	<b>4.8</b>	<b>1.8</b>
ISCED 2	<b>-6.9</b>	<b>-4.7</b>	<b>26.1</b>	<b>-3.1</b>
ISCED 3	<b>-3.7</b>	<b>-0.4</b>	<b>12.0</b>	<b>-2.0</b>
ISCED 4	<b>12.0</b>	-	-	<b>12.0</b>
ISCED 5	<b>-12.9</b>	-	-	<b>-12.9</b>
ISCED 6	<b>0.0</b>	-	-	<b>0.0</b>
ISCED 7	<b>9.7</b>	-	-	<b>9.7</b>
ISCED 8	<b>21.8</b>	-	-	<b>21.8</b>
<b>Total</b>	<b>-2.0</b>	<b>0.4</b>	<b>11.3</b>	<b>-0.4</b>

\* Includes a minority of students from the private sector

\*\* ISCED level is unknown

Table 2. Students enrolled by sex, academic year and ISCED level

ISCED 2011	Males	Females	Total
<b>Academic year 2013/2014</b>			
ISCED 1	12,303	11,769	24,072
ISCED 2	6,602	6,210	12,812
ISCED 3	8,650	8,771	17,421
ISCED 4	1,557	1,094	2,651
ISCED 5	1,065	1,082	2,147
ISCED 6	3,032	3,882	6,914
ISCED 7	1,511	1,908	3,419
ISCED 8	59	36	95
<b>Total</b>	<b>34,779</b>	<b>34,752</b>	<b>69,531</b>
<b>Academic year 2012/2013</b>			
ISCED 1	12,126	11,529	23,655
ISCED 2	6,757	6,460	13,217
ISCED 3	8,925	8,847	17,772
ISCED 4	1,473	893	2,366
ISCED 5	1,137	1,329	2,466
ISCED 6	3,025	3,889	6,914
ISCED 7	1,382	1,734	3,116
ISCED 8	48	30	78
Not available*	138	116	254
<b>Total</b>	<b>35,011</b>	<b>34,827</b>	<b>69,838</b>
<b>Percentage change</b> $\frac{2013/2014}{2012/2013}$			
ISCED 1	1.5	2.1	1.8
ISCED 2	-2.3	-3.9	-3.1
ISCED 3	-3.1	-0.9	-2.0
ISCED 4	5.7	22.5	12.0
ISCED 5	-6.3	-18.6	-12.9
ISCED 6	0.2	-0.2	0.0
ISCED 7	9.3	10.0	9.7
ISCED 8	22.9	20.0	21.8
<b>Total</b>	<b>-0.7</b>	<b>-0.2</b>	<b>-0.4</b>

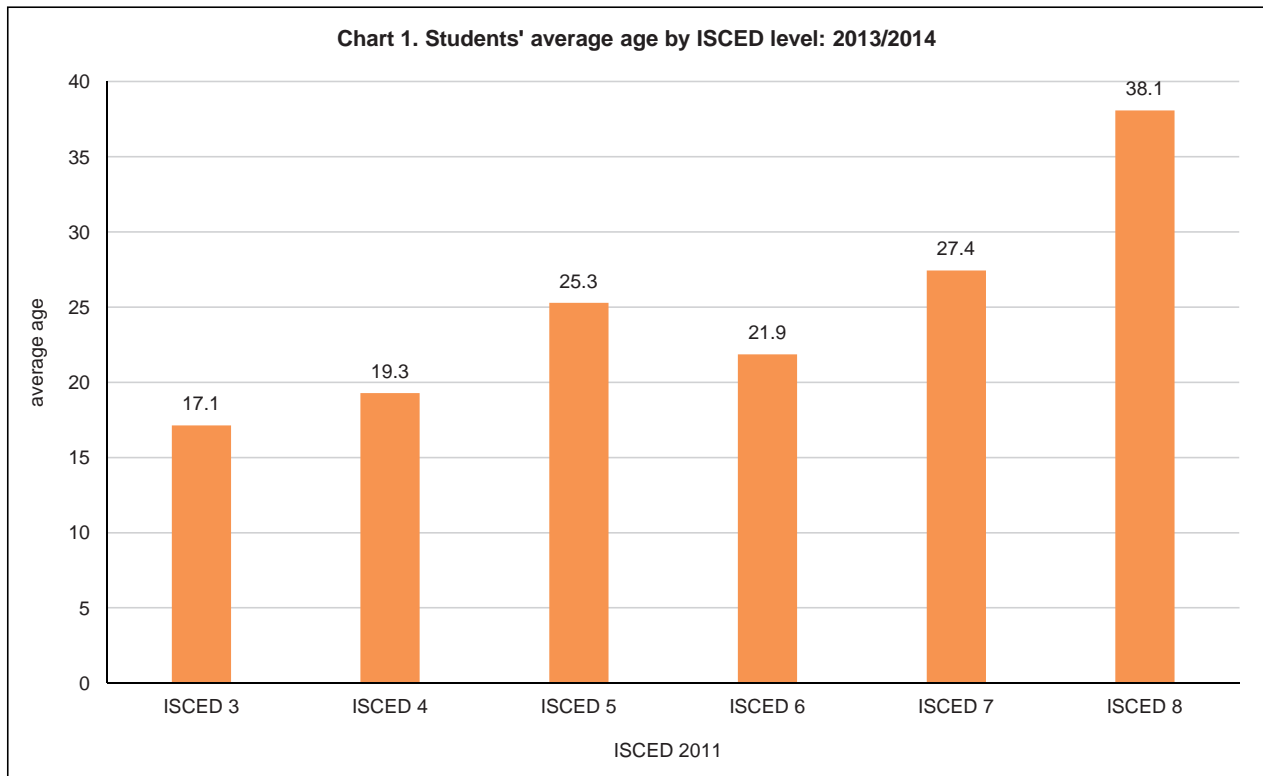
\*ISCED level is unknown

Table 3. Students enrolled in mandatory education by academic year, type of school and class level

	Year	Academic year 2013/2014				Average age*	Academic year 2012/2013				Average age*
		State	Church	Independent	Total		State	Church	Independent	Total	
ISCED 1	<b>Primary level</b>										
	Year 1	2,417	1,252	627	<b>4,296</b>	5.0	2,273	1,147	521	<b>3,941</b>	5.0
	Year 2	2,282	1,170	537	<b>3,989</b>	6.0	2,171	1,244	489	<b>3,904</b>	6.0
	Year 3	2,184	1,253	500	<b>3,937</b>	7.0	2,288	1,110	525	<b>3,923</b>	7.0
	Year 4	2,173	1,266	476	<b>3,915</b>	8.1	2,219	1,184	492	<b>3,895</b>	8.0
	Year 5	2,194	1,189	485	<b>3,868</b>	9.0	2,287	1,298	436	<b>4,021</b>	9.0
	Year 6	2,287	1,306	442	<b>4,035</b>	10.0	2,304	1,167	464	<b>3,935</b>	10.0
	<b>Total</b>	<b>13,537</b>	<b>7,436</b>	<b>3,067</b>	<b>24,040</b>	-	<b>13,542</b>	<b>7,150</b>	<b>2,927</b>	<b>23,619</b>	-
ISCED 2	<b>Secondary level</b>										
	Form 1	2,053	1,430	512	<b>3,995</b>	11.1	2,183	1,506	430	<b>4,119</b>	11.0
	Form 2	2,102	1,437	525	<b>4,064</b>	12.1	2,414	1,537	397	<b>4,348</b>	12.1
	Form 3	2,437	1,477	532	<b>4,446</b>	13.1	2,499	1,517	417	<b>4,433</b>	13.1
ISCED 3	Form 4	2,523	1,491	495	<b>4,509</b>	14.1	2,772	1,536	473	<b>4,781</b>	14.1
	Form 5	2,722	1,518	551	<b>4,791</b>	15.1	2,877	1,517	458	<b>4,852</b>	15.1
	<b>Total</b>	<b>11,837</b>	<b>7,353</b>	<b>2,615</b>	<b>21,805</b>	-	<b>12,745</b>	<b>7,613</b>	<b>2,175</b>	<b>22,533</b>	-

\* Students' age is calculated as at 1 January of academic year

Note: Excludes students attending special schools (included in Tables 1 and 2).



Note: Excludes students in mandatory education

**Table 4. Average class size by academic year, type of school and class level**

	Year	Academic year 2013/2014			Academic year 2012/2013		
		State	Church	Independent	State	Church	Independent
<b>ISCED 1</b>	<b>Primary Level</b>						
	Year 1	17.5	25.0	19.0	17.0	24.4	20.8
	Year 2	17.2	24.9	20.7	17.0	24.9	19.6
	Year 3	17.1	25.1	18.5	18.0	25.2	21.0
	Year 4	16.8	25.3	19.0	17.6	25.2	19.7
	Year 5	17.6	25.3	20.2	17.9	25.5	17.4
	Year 6	17.7	25.1	17.0	17.9	24.8	20.2
<b>ISCED 2</b>	<b>Secondary Level</b>						
	Form 1	21.2	24.2	19.0	20.2	24.7	17.9
	Form 2	21.0	24.4	17.5	20.6	25.2	19.9
	Form 3	23.0	23.1	17.7	19.1	23.3	17.4
<b>ISCED 3</b>	Form 4	20.3	22.6	18.3	19.1	23.6	18.2
	Form 5	20.6	23.0	17.8	19.4	23.3	17.6

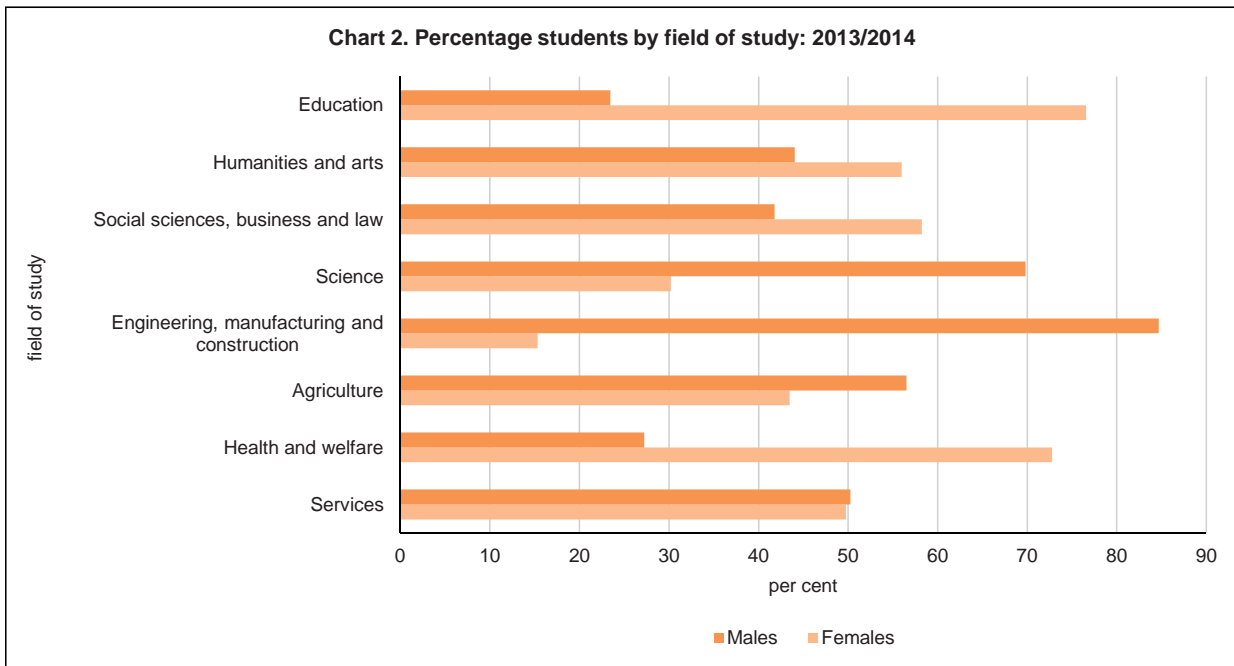
Note: Excludes students attending special schools

Table 5. Students enrolled by main level of education offered by institutions, academic year and originating region

Originating region	Primary	Secondary	Post-secondary general	Post-secondary vocational	Tertiary	Total
<b>Academic year 2013/2014</b>						
<b>Total</b>	<b>24,072</b>	<b>21,967</b>	<b>5,813</b>	<b>6,565</b>	<b>11,114</b>	<b>69,531</b>
<b>Europe</b>	23,636	21,756	5,772	6,481	10,824	68,469
<i>of which:</i>						
Maltese	22,629	21,184	5,559	6,326	10,362	66,060
Other EU	782	382	109	122	403	1,798
Non-EU	225	190	104	33	59	611
<b>America</b>	39	25	7	-	45	116
<b>Africa</b>	260	91	11	38	71	471
<b>Asia</b>	126	82	20	43	171	442
<b>Australia</b>	10	13	3	-	3	29
<b>Unknown</b>	1	-	-	3	-	4
<b>Academic year 2012/2013</b>						
<b>Total</b>	<b>23,655</b>	<b>22,721</b>	<b>5,863</b>	<b>6,624</b>	<b>10,975</b>	<b>69,838</b>
<b>Europe</b>	23,310	22,533	5,798	6,551	10,708	68,900
<i>of which:</i>						
Maltese	22,547	21,939	5,636	6,386	10,328	66,836
Other EU	610	383	90	115	319	1,517
Non-EU	153	211	72	50	61	547
<b>America</b>	46	18	11	16	51	142
<b>Africa</b>	142	61	15	24	55	297
<b>Asia</b>	115	82	15	29	159	400
<b>Australia</b>	13	8	4	4	2	31
<b>Unknown</b>	29	19	20	-	-	68
<b>% foreigners of total students 2013/2014</b>	6.0	3.6	4.4	3.6	6.8	5.0
<b>% foreigners of total students 2012/2013</b>	4.7	3.4	3.9	3.6	5.9	4.3

Table 6. Tertiary students enrolled by academic year, sex and field of study

Field of study	Academic year 2013/2014			Academic year 2012/2013			Percentage change		
	Males	Females	Total	Males	Females	Total	Males	Females	Total
<b>Education</b>	<b>259</b>	<b>893</b>	<b>1,152</b>	<b>287</b>	<b>1,065</b>	<b>1,352</b>	<b>-9.8</b>	<b>-16.2</b>	<b>-14.8</b>
Teacher training and education science	259	893	1,152	287	1,065	1,352	-9.8	-16.2	-14.8
<b>Humanities and arts</b>	<b>666</b>	<b>899</b>	<b>1,565</b>	<b>704</b>	<b>1,031</b>	<b>1,735</b>	<b>-5.4</b>	<b>-12.8</b>	<b>-9.8</b>
Art	269	274	543	304	400	704	-11.5	-31.5	-22.9
Humanities	397	625	1,022	400	631	1,031	-0.8	-1.0	-0.9
<b>Social sciences, business and law</b>	<b>1,837</b>	<b>2,491</b>	<b>4,328</b>	<b>1,712</b>	<b>2,496</b>	<b>4,208</b>	<b>7.3</b>	<b>-0.2</b>	<b>2.9</b>
Social and behavioural science	358	612	970	337	600	937	6.2	2.0	3.5
Journalism and information	62	97	159	80	166	246	-22.5	-41.6	-35.4
Business and administration	992	1,208	2,200	910	1,209	2,119	9.0	-0.1	3.8
Law	425	574	999	385	521	906	10.4	10.2	10.3
<b>Science</b>	<b>1,144</b>	<b>621</b>	<b>1,765</b>	<b>1,242</b>	<b>618</b>	<b>1,860</b>	<b>-7.9</b>	<b>0.5</b>	<b>-5.1</b>
Life sciences	134	236	370	255	250	505	-47.5	-5.6	-26.7
Physical sciences	207	171	378	194	144	338	6.7	18.8	11.8
Mathematics and statistics	73	63	136	62	64	126	17.7	-1.6	7.9
Computing	730	151	881	731	160	891	-0.1	-5.6	-1.1
<b>Engineering, manufacturing and construction</b>	<b>815</b>	<b>253</b>	<b>1,068</b>	<b>692</b>	<b>202</b>	<b>894</b>	<b>17.8</b>	<b>25.2</b>	<b>19.5</b>
Engineering and engineering trade	559	126	685	570	114	684	-1.9	10.5	0.1
Manufacturing and processing	-	-	-	-	-	-	-	-	-
Architecture and building	256	127	383	122	88	210	109.8	44.3	82.4
<b>Agriculture</b>	<b>14</b>	<b>14</b>	<b>28</b>	<b>12</b>	<b>13</b>	<b>25</b>	<b>16.7</b>	<b>7.7</b>	<b>12.0</b>
Agriculture, forestry and fishing	14	14	28	12	13	25	16.7	7.7	12.0
<b>Health and welfare</b>	<b>736</b>	<b>1,511</b>	<b>2,247</b>	<b>718</b>	<b>1,317</b>	<b>2,035</b>	<b>2.5</b>	<b>14.7</b>	<b>10.4</b>
Health	665	1,175	1,840	668	1,142	1,810	-0.4	2.9	1.7
Social services	71	336	407	50	175	225	42.0	92.0	80.9
<b>Services</b>	<b>196</b>	<b>226</b>	<b>422</b>	<b>225</b>	<b>240</b>	<b>465</b>	<b>-12.9</b>	<b>-5.8</b>	<b>-9.2</b>
Personal services	102	152	254	92	145	237	10.9	4.8	7.2
Transport services	-	-	-	-	-	-	-	-	-
Environmental protection	64	32	96	69	37	106	-7.2	-13.5	-9.4
Security services	30	42	72	64	58	122	-53.1	-27.6	-41.0
<b>Total</b>	<b>5,667</b>	<b>6,908</b>	<b>12,575</b>	<b>5,592</b>	<b>6,982</b>	<b>12,574</b>	<b>1.3</b>	<b>-1.1</b>	<b>0.0</b>



Note: Excludes students in mandatory education

**Table 7. Tertiary students enrolled by ISCED level and broad field of study: 2013/2014**

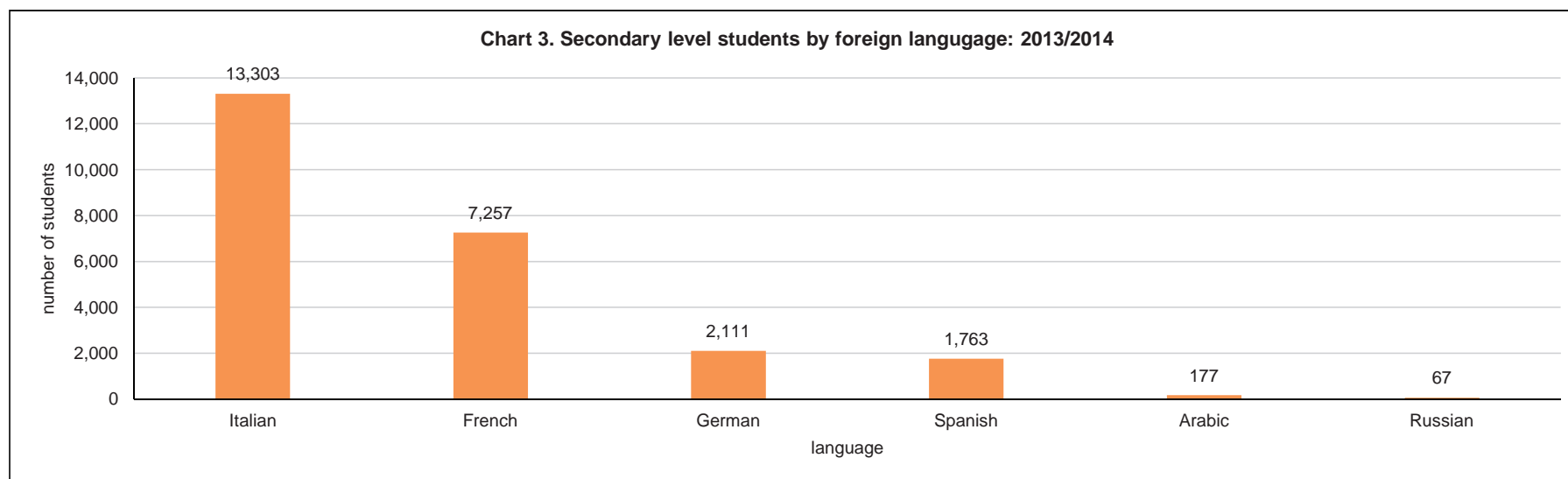
Broad field of study	ISCED 5	ISCED 6	ISCED 7 and 8	Total
Education	135	796	221	1,152
Humanities and arts	421	734	410	1,565
Social sciences, business and law	792	2,355	1,181	4,328
Science	274	1,212	279	1,765
Engineering, manufacturing and construction	201	683	184	1,068
Agriculture	15	13	-	28
Health and welfare	199	915	1,133	2,247
Services	110	206	106	422
<b>Total</b>	<b>2,147</b>	<b>6,914</b>	<b>3,514</b>	<b>12,575</b>



Table 8. Students enrolled in vocational institutions by academic year, ISCED level and broad field of study

Broad field of study	Academic year 2013/2014					Academic year 2012/2013				
	ISCED 3	ISCED 4	ISCED 5	ISCED 6	Total	ISCED 3	ISCED 4	ISCED 5	ISCED 6	Total
Education	-	-	-	-	-	-	-	25	-	25
Humanities and arts	164	233	268	91	756	141	240	250	91	722
Social sciences, business and law	212	370	313	43	938	215	305	458	29	1,007
Science	425	522	267	90	1,304	420	496	264	118	1,298
Engineering, manufacturing and construction	561	563	196	86	1,406	539	616	187	87	1,429
Agriculture	59	51	15	13	138	69	40	25	-	134
Health and welfare	292	399	67	19	777	323	305	43	11	682
Services	595	419	80	7	1,101	569	303	72	-	944
<b>Total</b>	<b>2,308</b>	<b>2,557</b>	<b>1,206</b>	<b>349</b>	<b>6,420</b>	<b>2,276</b>	<b>2,305</b>	<b>1,324</b>	<b>336</b>	<b>6,241</b>

Note: Vocational institutions refer to ITS and MCAST



Note: A student may be studying more than one language

## Methodological Notes

1. Data collection is carried out during the second quarter of each academic year. The reference period for the information provided being the end of March.
2. Institutions providing formal education fall within the scope of this news release with the exception of institutions providing distance learning.
3. Collected data relate to general institution details; profile of enrolled students; profile of full-time and part-time courses for post-secondary and tertiary levels.
4. Most of the questionnaires sent to pre-primary to secondary schools, are sent via ordinary mail. However each educational institution may opt to provide its information using the soft-copy version of the questionnaire. All incoming questionnaires are processed through a custom-made computer software. Post-secondary and tertiary questionnaires are sent to institutions via email.

### 5. Definitions:

#### ● International Standard Classification of Education - ISCED

The International Standard Classification of Education (ISCED) is a framework for assembling, compiling, and analysing cross-nationally comparable statistics on education. ISCED is a member of the United Nations International Family of Economic and Social Classifications and is the reference classification for organizing education programmes and related qualifications by levels and fields of education. The ISCED is a product of international agreement and is adopted formally by the General Conference of UNESCO Member States.

In this release ISCED levels are based on ISCED 2011 classification:

ISCED 0 - Early childhood education

ISCED 1 - Primary education

ISCED 2 - Lower secondary education (including post-secondary vocational certificates)

ISCED 3 - Upper secondary education and post-secondary general education

ISCED 4 - Post-secondary non tertiary education, e.g. National/Extended Diploma

ISCED 5 - Short cycle tertiary education, e.g. Higher National Diploma

ISCED 6 - Bachelor's or equivalent level: tertiary education

ISCED 7 - Master's or equivalent level: tertiary education

ISCED 8 - Doctoral or equivalent level, e.g. PhD: tertiary education

Not available - ISCED level unknown

- **Average age** is calculated as at 1st January of the academic year.
- **Mandatory education** includes education from primary to upper secondary levels.
- **Class** refers to a group of students who are physically following a common course of study in the same space.
- **General education**  
Programmes that are designed to develop learners' general knowledge, skills and competencies, as well as literacy and numeracy skills, often to prepare students for more advanced education programmes at the same or higher ISCED levels and to lay the foundation for lifelong learning.
- **Vocational education**  
Programmes that are designed for learners to acquire the knowledge, skills and competencies specific to a particular occupation, trade or class of occupations or trades. Vocational education may have work-based components. Successful completion of such programmes leads to labour market-relevant vocational qualifications acknowledged as occupationally-oriented by the relevant national authorities and/or the labour market. For the purpose of this release vocational institutions refer to ITS and MCAST.
- **Fields of study**  
ISCED Fields of Education and Training classifies education programmes and related qualifications by fields of study. A field is the 'broad domain, branch or area of content covered by an education programme or qualification'. Fields of education and training and levels of education or educational attainment are cross-classification variables within ISCED and are therefore independent of each other.

6. More information relating to this release may be accessed at:

Metadata: <http://nso.gov.mt/metadata/reports.aspx?id=41>

Classification: <http://nso.gov.mt/metadata/classificationdetails.aspx?id=ISCED 2011>