

T.

HOSPITALS.

1892.

HOSPITAL RETURNS, for the year 1892.

Central Hospital.
QUESTION I.

	Number remaining in Hospital at the beginning of the year 1892	Number admitted during the year 1892	Daily average in Hospital during the year 1892	Attendants			Patients Discharged			Number who died in 1892	Average stay of those			Specify the longest time for which any one inmate has stayed
				Nurses doing no other duty		Servants partially or not at all employed as Nurses	Cured	Relieved	Not improved and at request		Died in 1892	Discharged	Remaining at the end of 1892	
				Day Nurses and Night Nurses	Not Nurses									
Males	82	1350	86	* 8	† 11	—	736	238	231	145	23	24	21	517
Females	64	841	71	† 10	‡ 10	—	398	150	190	97	33	23	28	640
Totals	146	2191	157	18	21	—	1134	388	421	242	—	—	—	—

* For day and night duties. Extra Nurses are hired when required.
 † For day and night (including two Midwives). There are besides five Sisters of Charity who perform duties in both Divisions.
 ‡ Including Porter, Cook, Mattress-maker, and Barber.
 § Eight Washwomen. Portress and Sister of Charity in charge of Kitchen.

QUESTION II.

Name and Number of each Ward	Length in feet	Breadth in feet	Height in feet	Number of Beds assigned to the Ward	Amount of Cubic Space available for each Patient for the average number of patients in the Ward Cubic feet	The greatest number of Patients in the Ward at any one time during the year	Windows and Ventilating Openings		Connection of the Privy with the Ward		Is there any Sink or Drain opening in Ward		Remarks
							Total area in square feet	Area capable of opening in square feet	If Privy in Ward	If leading out of Ward	Troughed	Untroughed	
Male Medical Subdivision	Ward 1 ...	78	22½	24	1520	20	418	384	No	No	No	No	The Privies are situated in parts quite projecting out of the adjacent building.
	2 ...	24	22½	24	6480	4	208	197					
	3 ...	46½	27	21	2,636	13	238	238					
	4 ...	46½	27	21	2,636	14	223	223					
Ophthalmic Ward	—	22	26	15	1,430	8	97	97					
Surgical Subdivision	1 ...	22	26	15	1,716	6	135	135					
	2 ...	24	26	15	1,872	6	166	166					
	3 ...	27	47	21	2,665	15	254	254					
	4 ...	27	47	21	2,423	13	262	262					
Corridor	—	98	13	15	1,592	17	263	263					
Female Medical Subdivision	1 ...	77½	22½	22½	3,565	16	439	405					
	2 ...	22½	22½	22½	3,795	5	205	194					
	3 ...	47½	22½	24½	2,617	15	168	168					
Lying in Wards	1 ...	26	21	15	2,730	4	95	95					
	2 ...	26	22½	15	2,194	4	131	131					
	3 ...	26	22½	15½	2,941	4	214	214					
Corridor	—	85½	12½	12½	—	7	129	129					
Ophthalmic Ward	—	26	22½	15½	1,486	12	214	214					
Female Surgical Subdivision	1 ...	47½	22½	24½	2,618	15	174	174					
	2 ...	47½	22½	24½	2,618	14	242	242					
Gynecology	—	26	22½	15½	2,230	8	214	214					
Venereal wards	1 ...	35	20	15½	1,550	15	176	176					
	2 ...	35	20	15½	—	—	127	127					

N.B.—Figures in italics show the "daily average of beds occupied."

HOSPITAL RETURNS, for the year 1892.

Central Hospital—*continued.*QUESTION II—*continued.*

(I.) What quantity of Water is available for each Patient every day?

Any quantity, as the building is directly connected with the Aqueducts which supply the town. There is a constant supply both of potable and 2nd Quality water (hard).

What is the source of the Water Supply?

The potable water is conveyed from a natural spring to a storage reservoir at about $4\frac{1}{2}$ miles from the town and then by an iron main. The 2nd quality water is conveyed by an iron main from a natural hard spring at about 2 miles from the town and then pumped to the same.

What is the quality of the Water?

Good in every respect.

(II.) Detail the arrangements as to Baths and Lavatories.

The Baths (Rufford and Finch's 1st class porcelain Baths) are conveniently situated both for depuration on admission, and for ablution or cure during stay in Hospital. Two lavatories (Jenning's Lift up Lavatories) exist, one in each division and two others (earthenware basins fixed in marble slabs) 1 in lying in Wards and 1 in lock Hospital. The outlet pipes of Baths and Lavatories are completely disconnected by discharging on gully traps in the open air.

(III.) What is the system of Sewerage and what the condition of the Privies?

Water system. The privies are separated from the Wards and Corridors by means of ante-rooms thoroughly ventilated.

HOSPITAL RETURNS, for the year 1892.

Central Hospital—*continued.*

QUESTION III.

Number of Visits of Inspection paid to the Hospital during the year 1892.

Specifying the character of the Visit in respect to Notice	And stating the Official Position of the Visitors		
	By the Governor or Colonial Secretary	By a Government Inspector (at Malta the Comptroller)	By a Committee of the Governing Body
By Appointment		The visits of the Comptroller are always sudden, and take place very often, about twice a week. The Chief Government Medical Officer visits also occasionally the Hospital.	Four times by Commissioners of Charity.
Of Surprise... ..	None		

(I.) In reference to the above Table, state whether or not the Register Books were produced on every occasion; and if not, on how many occasions they were not so produced.

The Register Books are inspected by the Comptroller and his delegates, as he is responsible for the same.

(II.) And if on any occasion when they were examined, they were found not to be properly made up to date of examination.

The Books were found to be properly made up to date of examination.

(III.) State also how many reports of the following kinds have come under the notice of the Governor:

- (a) Reports of a Financial and Statistical kind, especially such as show the system on which money and Store Accounts are kept and audited.
- (b) Reports by Persons charged with the immediate management of the Hospital.
- (c) Reports by a Government Inspector, independent of the Governing Authority of the Hospital.

(Append copies of his Reports, if any).

These queries are not applicable to Malta, as all the Charities in the Island are under the management of one head Officer (the Comptroller of Charitable Institutions), who corresponds with the Governor, through the Chief Secretary, as often as occasion may require, on all questions connected with every detail of organization, discipline, and finance. Periodical reports are, therefore, considered unnecessary, as information on all points can be instantly obtained, when asked for.

HOSPITAL RETURNS, for the year 1892.

Central Hospital—continued.

QUESTION IV.

Table of cases of each kind of Disease treated in the Central Hospital during the year 1892, with the Number of Deaths from each such Disease:—

Disease	No. of		Disease	No. of		Disease	No. of		Disease	No. of	
	Cases	Deaths		Cases	Deaths		Cases	Deaths		Cases	Deaths
Abscessus ...	20		Distorsio ...	12		Iritis syphilitica ...	1		Purpura hæmorrhagica ...	3	
Abscessus hepatis ...	4	2	Deformitas ...	1		Intus cum matrem ...	51		Pleuro-pneumonia ...	1	
Ascitis idiopathica ...	1		Dysmenorrhœa ...	3		Keratitis ...	12		Paralysis ...	5	
Apoplexia ...	12	6	Dermatitis ...	2		Leucitis ...	27		Perosis ...	7	
Asthma ...	7		Delirium generalis ...	38	1	Leucocytæmia ...	4		Pharyngitis ...	3	
Asthma Addisoni ...	2	1	Dolirium tremens ...	1		Lupus ...	1		Proctalgia ...	1	
Angina tonsillarlis ...	19		Diabetes ...	3		Lympha ...	2		Paronychia ...	1	
Albuminuria ...	10		Demencia ...	3		Lympho-adenoma ...	4		Pharyngitis ...	1	
Alcoholismus ...	6		Dialocentia ...	1		Lencorrhœa ...	1		Rheumatismus ...	40	
Aneurysma ...	3	1	Dissectio ...	12	1	Leucorrhœa ...	2		Rupia ...	2	
Anemorrhœa ...	2		Epilepsia ...	65	12	Lepra ...	1		Rhinalgia ...	1	
Abortus ...	4		Erythema ...	2		Laceratio perinet ...	1		Rhachalgia ...	1	
Anæmia ...	3		Embolus cerebri ...	2	1	Leucoma ...	1		Ribentis placentar ...	1	
Asphyxia ...	6	1	Enteralgia ...	5		Lobium leporinum ...	3		Rectale ...	2	
Autismus ...	9	3	Empyœma ...	1		Luxatio ...	2		Ritentis urinæ ...	2	2
Arthritis ...	15		Eczema ...	9		Mamma cum infante ...	32		Retinitis pigmentosa ...	1	
Adenoma ...	1		Epistaxis ...	2		Mania ...	1		Rheudatio ...	1	
Adenitis ...	6		Endometritis ...	18		Meningitis ...	5	5	Sarcoma ...	8	
Antirax ...	11		Endometritis Gonorr ...	1		Myelitis ...	3	2	Symphyloma cœtura ...	3	
Atrophia Hepatis ...	1	1	Endocervicitis ...	20		Mollitia congesta ...	1		Stomatitis ...	3	
Ataxia Locomotrix ...	1		Ectyana ...	3		Metritis ...	1		Sclerosis cerebri ...	1	
Angioma ...	1		Epithelioma ...	11	1	Metrorrhagia ...	4		Seclusus ...	1	
Blennorrhœa ...	9		Erysipelas ...	4	2	Mollia carnea ...	3		Splenitis ...	1	
Bursitis prepatellaris ...	8		Eustachian ...	4		Morbus coxæ ...	2		Salpingo oophoritis ...	1	
Bubo ...	1		Elephantiasis ...	1		Myoma uteri ...	1		Septicæmia ...	4	3
Bronchitis ...	75	6	Epilepsia ...	2		Mucositis ...	4		Salpingitis ...	2	
Bronchitis asthmatis ...	3		Enterocolitis dysent ...	41	4	Mycosis ...	1		Symphilitis ...	67	
Bronco-Pneumonia ...	5	4	Epididymitis biem ...	1		Myo-fibroma ...	1		Syphilis tertiaria ...	7	
Bronchi alveolitis ...	2		Fistula lacrymalis ...	7		Neuralgia ...	18		Syphilis hereditaria ...	2	1
Basilidii morbus ...	1		Fistula auris ...	15		Nephtalis ...	21	3	Syrtus mammae ...	2	
Blepharitis ...	2		Fistula vesico ventalis ...	1		Necrocephalus ...	1		Sarcoma ...	5	
Congestio spinalis ...	2		Fistula uteri ...	1		Nevritis ...	3		Scleroma ...	1	
Catarrhus bronchialis ...	2		Fractura ...	56	3	Necrosis ...	10		Stricture urethralis ...	7	
Cardiopathia ...	116	68	Fractura composita ...	8	1	Noevis ...	4		Schlopetoplaga ...	4	2
Cirrhosis hepatis ...	6	4	Furunculus ...	7		Noma ...	4	3	Strauma ...	9	1
Catarrhus gastricus ...	19		Filro-sarcoma ...	3		Onosa ...	1		Tuberculosis ...	15	2
Colitis dysenterica ...	10		Fibroma ...	3		Onychia ...	3		Tetanus ...	2	
Cancer pancreaticus ...	2	2	Febria remittens ...	177	6	Oophorus alpingitis ...	2		Tumor bari abdominalis ...	3	
Cancer hepatis ...	3	2	Febria intermittens ...	10		Orchitis ...	39		Tumor dorsalis ...	2	
Congestio hepatis ...	13		Febria typhoidea ...	13	5	Otitis ...	2		Tumor uteri ...	1	
Congestio cerebri ...	13	4	Febria rheumatica ...	4		Osteitis ...	3		Trichiasis ...	23	
Cephalalgia ...	4		Febria malarica ...	2		Odontalgia ...	2		Tumor oculi ...	2	
Cancer uteri ...	9	2	Febria gastrica ...	3		Osteo-osteoma ...	2		Tumor cerebri ...	1	
Cystis filio-myoma ...	2		Febriola ...	28		Observatio ...	47		Talipes equinus ...	2	
Congestio uteri ...	1		Fistula urethralis ...	1		Ovariola ...	1		Ulcus corneæ ...	17	
Cachexia Cancerosa ...	1		Gastralgia ...	7		Oophoritis ...	4		Ulcus ...	56	
Cellulitis ...	2		Gastricismus ...	11		Otidiparis curis ...	21		Ulcus molle ...	22	
Carcinoma recti ...	9		Ganglion ...	1		Ostruatio intestini ...	1		Ulcus perforans ...	10	
Contusio ...	23		Gonarthrocachis ...	6		Ophthalmoplegia ...	1		Uris lethargica ...	1	
Cervicitis pollicolaris ...	1		Gangrena senilis ...	4	3	Osteo-myelitis infect ...	1	1	Uterus resupinatus ...	1	
Cystis ...	10		Glecoma ...	2		Phlegmatia dalens ...	2		Uterus prostris ...	1	
Cystis in ovario ...	1		Gestatio ...	86	1	Phlegmon ...	24	5	Sinovitis ...	9	
Cario-necrosis ...	11		Haematometra ...	2		Posti Motus ...	3		Vulnus ...	49	1
Carcinoma ...	3		Hysteria ...	8		Palus tubercularis ...	1	1	Vaginitis ...	7	
Concussio spinalis ...	1		Haematemesis ...	1		Ponophthalmicitis ...	1		Virgigo ...	4	
Concussio cerebri ...	6		Hypopyon ...	3		Phyma ...	11		Varix ...	1	
Cystitis ...	17	6	Hernia ...	22	7	Pneulis ...	7		Vesica instabilis ...	1	
Caries ...	4		Hydrocele ...	9		Poliopus nasi ...	3				
Calculus vesicalis ...	2		Aenustoma ...	1		Pleuritis ...	4				
Conusio oculi ...	1		Haemorrhoides ...	15		Periostitis ...	2	1			
Conjunctivitis gran ...	71		Hypertrophia proat ...	6	2	Prolapsus ovarii ...	1				
Conjunct. purulenta ...	7		Haemorrhagia ...	1		Prolapsus uteri ...	6				
Conjunct. catarrhalis ...	12		Haerpes zoster ...	2		Polypus uteri ...	2				
Cataracta ...	8		Hemiplegia ...	5		Parametritis ...	4				
Cardiopalæna ...	1		Haemoptysis ...	8	1	Prurigo ...	3				
Congestio pulm ...	1	1	Hepatitis ...	3	2	Pneumonia ...	18				
Collula peritonitis ...	1		Hemichorea ...	1		Phthisis ...	70	28			
Clavus ...	1		Ischiatica ...	11		Pseudeluxocœmia ...	1	1			
Corpus liberum in articulatione ...	1		Irritatio medullæ ...	1		Papilloma ...	1	1			
Catarrhus epididymicus (influenza) ...	23		Irritatio spinalis ...	1		Penus ...	1				
Cystis Dermaloides ...	1		Icterus ...	1		Periostitis orbitalis ...	1				
			Iperplasia uteri ...	1		Podarthrocachis ...	1				
			Indigestio ...	3		Psoriasis ...	2				
									Total ...	1,435	242

HOSPITAL RETURNS, for the year 1892.

Central Hospital—continued.

Table of Cases of the following Diseases occurring amongst Patients and also amongst Officers.

Name of Disease	Occurring amongst Patients			Occurring amongst Officers			
	Number of Cases	In case of Patients attacked while in Hospital, state how long the Person had been in Hospital before his attack, and for what disease he was admitted	Number of Deaths	Resident Officers		Non-Resident Servants	
				Cases	Deaths	Cases	Deaths
Yellow Fever or other Endemic Fever...							
Plague							
Typhus							
Smallpox							
Scarlatina							
Enteric (or Typhoid) Fever	10	Admitted for Remittent fever and after 2, 11, 3, 4, 8, 8, 2, 4, 4 and 6 days respectively Typhoid fever set in.	5	NIL	NIL	NIL	NIL
Erysipelas	3	1 admitted for Arthritis, Erysipelas set in after 257 days	—				
Pyæmia		1 Ileitis set in after 11 days.	2				
		1 Cystitis in Ovario in after 32 days.	—				

HOSPITAL RETURNS, for the year 1892.

British Merchant Seamen's Hospital.

(opened on the 20th March 1882.)

QUESTION I.

	Number remaining in Hospital at the beginning of the year	Number admitted during the year	Daily average in Hospital during the year	Attendance			Patients Discharged			Number who died in year	Average stay of those			Specify the longest term for which any one inmate has stayed	
				Nurses doing no other duty	Servants partially or not at all employed as Nurses			Cured	Relieved		Not improved and at request	Died in year	Discharged		Remaining at the end of year
					Day Nurses and Night Nurses	Sea Nurses	Partial Day Nurses								
Males	16	100	8	* 1	† 1	—	—	26	1	25	5	13	26	19	277
Females	—	1	—	* 1	—	—	—	—	1	—	—	—	61	—	—

* For day and night duties. Extra Nurses are hired when required.
 † Cook.

QUESTION II.

Name and Number of each Ward	Length in feet	Breadth in feet	Height in feet	Number of beds assigned to the Ward	Amount of Cubic Space Available for each Patient for the average number of Patients in the Ward, Cubic feet	The greatest number of Patients in the Ward at any one time during the year	Windows and Ventilating Openings		Connections of the Privy with the Ward		Is there any sink or drain opening in Ward		Remarks									
							Total area in square feet	Area occupied by opening in square feet	If Privy in Ward	If leading out of Ward	Occupied	Un-occupied										
Surgical Division... Ward 1 ...	20	19½	15½	5	6,045	2	65	61	No	One privy with entrance in Bath room out of Ward	No	No										
														2 ...	20	16	15½	6	4,960	3	65	61
														3 ...	36½	14½	15½	5	2,735	6	105	101
Medical ...	47½	22½	24½	12	8,730	8	188	188														

N.B. - Figures in italics show the "daily average of beds occupied."

British Merchant Seamen's Hospital—*continued.*QUESTION II—*continued.*

(I.) What quantity of Water is available for each Patient every day?

Any quantity, as the building is directly connected with the Aqueducts which supply the town. There is a constant supply, both of potable and 2nd Quality water (hard).

What is the source of the Water Supply?

The potable water is conveyed from a natural spring to a storage reservoir at about $4\frac{1}{2}$ miles from the town and then by an iron main. The 2nd quality water is conveyed by an iron main from a natural hard spring at about 2 miles from the town and then pumped to the same.

What is the quality of the Water?

Good in every respect.

(II.) Detail the arrangements as to Baths and Lavatories.

There are no proper arrangements for Baths. There is only a movable Bath in a room adjoining the Privy. There are three lavatories (Earthenware basins fixed on marble slabs) in Medical Ward besides others movable in Surgical Wards.

(III.) What is the system of Sewerage and what the condition of the Privies?

Water system. The water closets are provided with lifting pan. The privies are separated from the Wards by means of anterooms thoroughly ventilated.

HOSPITAL RETURNS, for the year 1892.

British Merchant Seamen's Hospital.—*continued.*

QUESTION III.

Number of Visits of Inspection paid to the Hospital during the year 1892.

Specifying the character of the Visit in respect to Notice	And stating the Official Position of the Visitor		
	By the Governor or Colonial Secretary	By a Government Inspector (at Malta the Comptroller)	By a Committee of the Governing Body
By Appointment		The Comptroller of Charitable Institutions visits the Hospital very often during the year always by surprise. The Chief Government Medical Officer visits also occasionally this Hospital.	Four times by Commissioners of Charity.
Of Surprise... ..	Twice by the Governor by surprise.		

(I.) In reference to the above Table, state whether or not the Register Books were produced on every occasion; and if not, on how many occasions they were not so produced.

The Register Books are inspected by the Comptroller and his delegates, as he is responsible for the same.

(II.) And if on any occasion when they were examined, they were found not to be properly made up to date of examination.

Always up to date.

(III.) State also how many reports of the following kinds have come under the notice of the Governor:

- (a) Reports of a Financial and Statistical kind, especially such as show the system on which money and Store Accounts are kept and audited.
- (b) Reports by Persons charged with the immediate management of the Hospital.
- (c) Reports by a Government Inspector, independent of the Governing Authority of the Hospital.

(Append copies of his Reports, if any).]

These queries are not applicable to Malta, as all the Charities in the Island are under the management of one head Officer (the Comptroller of Charitable Institutions), who corresponds with the Governor, through the Chief Secretary, as often as occasion may require, on all questions connected with every detail of organization, discipline, and finance. Periodical reports are, therefore, considered unnecessary, as information on all points can be instantly obtained, when asked for.

HOSPITAL RETURNS, for the year 1892.

British Merchant Seamen's Hospital—*continued.*

QUESTION IV.

Table of cases of each kind of Disease treated in the Seamen's Hospital during the year 1892, with the Number of Deaths from each such Disease:—

Disease treated Medical	Number of		Disease treated Surgical	Number of	
	Cases	Deaths		Cases	Deaths
			Brought forward ...	54	4
Amblyopia ...	2	1	Gastrologia ...	2	
Alcoholismus ...	1		Hæmatemesis ...	1	
Abscessus ...	2		Hernia ...	2	
Abscessus hepatis ...	1		Hæmorrhoides ...	1	
Bronchitis ...	3		Influentia ...	1	
Bubo ...	4		Insolatio ...	1	
Concussio spinæ ...	1		Lumbago ...	4	
Cardiopathia ...	3	1	Nephritis ...	2	
Contusio ...	3		Obstipatio ...	2	
Cystitis ...	1		Orchitis ...	1	
Congestio cerebri ...	1	1	Observatio ...	1	
Distortio ...	2		Pneumonia ...	2	
Dyspepsia ...	2		Peritonitis ...	1	1
Debilitas generalis ...	5		Perionitis ...	1	
Degeneratio cordis ...	1	1	Pleurisyitis ...	1	
Fractura ...	3		Rheumatismus ...	6	
Febris remittens ...	4		Syphilis ...	13	
Febris intermittens ...	3		Sumulatio ...	7	
Febris typhoidea ...	3		Stricture ...	2	
Febris malarica ...	1		Ulcus ...	3	
Gonorrhœa ...	2		Valvula ...	8	
Gastricismus ...	1				
Carried over ...	54	4	Totals ...	115	5

Table of Cases of the following Diseases occurring amongst Patients and also amongst Officers.

Name of Disease	Occurring amongst Patients			Occurring amongst Officers			
	Number of Cases	In case of Patients attacked while in Hospital, state how long the Patient had been in Hospital before his attack, and for what disease he was admitted	Number of Deaths	Resident Officers		Non-Resident Servants	
				Cases	Deaths	Cases	Deaths
Yellow Fever or other Endemic Fever ...							
Plague ...							
Typhus ...							
Smallpox ...							
Scarlatina ...			NIL	NIL	NIL	NIL	NIL
Euteric (or Typhoid) Fever ...	1	Admitted for remittent fever, typhoid fever set in after 16 days.					
Erysipelas ...							
Pyæmia ...							

HOSPITAL RETURNS, for the year 1892.

Santo Spirito Hospital.*

QUESTION I.

	Number remaining in Hospital at the beginning of the year 1892	Number admitted during the year 1892	Daily average in Hospital, during the year 1892	Attendants			Patients Discharged			Mortality who died in 1892	Average stay of those			Specify the longest time for which any one inmate has stayed	
				Nurses doing no other duty	Surgeons partially or not at all employed in Station			Cured	Relieved		Not improved and in Hospital	In 1892	Discharged		Remaining at the end of 1892
					Day Nurses and Night Nurses	No. Nurses	Partial Day Nurses								
Males	35	205	36	† 2	‡ 2	—	134	14	22	30	85	71	108	533	
Females	23	133	24	2	5	3	82	12	16	21	55	73	80	328	
Totals	58	338	60	4	5	—	216	26	38	51	—	—	—	—	

* Since the 22nd August 1887, this Institution is being used partially as an Hospital for convalescent patients transferred from the Central Hospital and for chronic and incurable cases awaiting admission in Asylums and partly for acute cases sent from certain parts of the Country.

† There are no "Special Nurses" for night duties; the day Nurses perform both services by turn. Two Sisters of Charity perform also Nursing duties in both divisions.

‡ One Gate Porter and one Servant.

§ One Cook, a Sister of Charity and two Washerwomen.

QUESTION II.

Name and Number of each Ward	Length in feet	Breadth in feet	Height in feet	Number of Beds assigned to the Ward	Amount of Cubic Space Available for each Patient for the average number of Patients in the Ward, Cubic feet	The greatest number of Patients in the Ward at any one time during the year	Windows and Ventilating openings		Construction of the Floor with the ward		Is there any Sink or Drain opening in Ward		Remarks
							Total area in square feet	Area capable of opening in square feet	If raised in Ward	If sloping out of Ward	Trapped?	Un-trapped?	
<i>Male Division—</i>													
Ward... 1	26	19	27	9	1,482	9	14	4	No	Yes	No	No	
" ... 2	42	33	27	14	2,006	14	75	25					
" ... 3	24	20	27	6	2,160	6	75	25					
" ... 4	26	15	11	5	4,790	5	12	9					
Infirmary ... 5	29	19	27	8	2,125	8	14	4					
<i>Female Division—</i>													
Ward... 1	40	21	27	12	2,835	12	75	25	No	Yes, but down a short flight of steps	No	No	
" ... 2	32	21	27	9	2,268	9	75	25					
Infirmary ... 3	34	23	27	9	2,639	9	15	25					

N.B.—Figures in italics show the "daily average of beds occupied."

Santo Spirito Hospital—continued.QUESTION II—*continued.*

(I.) What quantity of Water is available for each Patient every day?

Any quantity, as the building is directly connected with the aqueduct.

What is the source of the Water Supply?

A natural spring, which is situated in the neighbourhood.

What is the quality of the Water?

Good in every respect.

(II.) Detail the arrangements as to Baths and Lavatories.

There are Rufford and Finch's porcelain Baths and two sets of lavatories (earthenware basins fixed on marble slabs) one in each Division.

(III.) What is the system of Sewerage and what the condition of the Privies?

Water system. The privies are separated from the Wards and Corridors by means of anterooms, thoroughly ventilated.

HOSPITAL RETURNS, for the year 1892.

Santo Spirito Hospital—Continued.

QUESTION III.

Number of Visits of Inspection paid to the Hospital during the year 1892.

Specifying the character of the Visit in respect to Notice	And stating the Official Position of the Visitors		
	By the Governor or Colonial Secretary	By a Government Inspector (or Maha the Comptroller)	By a Commission of the Governing Body
By Appointment	Nil	The Comptroller of Charitable Institutions visits very often this Hospital: always by surprise.	Four times by a Commissioner of Charity by surprise.
Of Surprise		Four times by Chief Government Medical Officer.	

(I.) In reference to the above Table, state whether or not the Register Books were produced on every occasion; and if not, on how many occasions they were not so produced.

The Register Books are inspected by the Comptroller and his delegates, as he is responsible for the same.

(II.) And if on any occasion when they were examined, they were found not to be properly made up to date of examination.

Always up to date.

(III.) State also how many reports of the following kind have come under the notice of the Governor:

(a.) Reports of a Financial and Statistical kind, especially such as show the system on which money and Store Accounts are kept and audited.

(b.) Reports by Persons charged with the immediate management of the Hospital.

(c.) Reports by a Government Inspector, independent of the Governing Authority of the Hospital.

(Append copies of his Reports, if any).

(a) These reports have never been called for by Government, but Registers are kept which show every detail for any kind of Statistics.

(b) The Medical Officer in charge of the Hospital sends periodically professional reports, and corresponds as often as may be required, on all matters connected with administration and discipline: but no annual report is prepared which describes generally the "work done" by the Institutions, as is the practice in England.

(c) No report of this kind has ever been prepared as the Comptroller of Charitable Institutions is held responsible to Government for every detail of administration and discipline, and is in constant communication with the Governor, through the Chief Secretary.

Hospital of Santo Spirito—continued.

QUESTION IV.

Table of cases of each kind of Disease treated in the Hospital in the year, with the number of Deaths from each such Disease :—

Disease treated	Number of		Disease treated	Number of	
	Cases	Deaths		Cases	Deaths
Abcesses ...	5	—	Brought forward...	246	40
Adenitis ...	1	—	Haemiplegia ...	6	3
Amblyopia ...	1	—	Haemaphysitis ...	1	—
Amenorrhoea ...	2	—	Haemorrhoids ...	1	—
Anthrax ...	2	—	Hernia ...	2	—
Arthritis ...	4	—	Herpes ...	1	—
Asthma ...	4	—	Hydrocele ...	1	—
Red sores ...	1	1	Hypertrophy of Prost ...	1	—
Bright's disease ...	1	—	Hysteria ...	1	—
Bronchitis ...	24	12	Icterus ...	1	—
Broncho pneumonia ...	3	—	Influenza ...	7	—
Cardiopathia ...	13	2	Intes. Obstruction ...	1	1
Cellulitis ...	1	—	Ischialgia ...	3	—
Cereb. Congestion ...	1	—	Keratosis ...	5	—
Chlorosis ...	1	—	Lunago ...	3	—
Clovo Anaemia ...	1	—	Metrorrhagia ...	1	—
Conjunctivitis ...	4	—	Meningitis ...	1	—
Concussio spinal. ...	1	—	Myelitis ...	2	—
Contusio ...	7	—	Nephritis ...	2	—
Convulsio ...	1	—	Ostitis ...	2	—
Coxalgia ...	1	—	Pharyngitis ...	1	—
Cyrrhosis hepatis ...	1	1	Phlegmon ...	5	—
Dermatitis ...	1	—	Phthisis ...	9	4
Diabetes ...	3	1	Paralysis ...	1	—
Dropy ...	1	1	Pneumonia ...	5	—
Dysentery ...	6	—	Pott's Disease ...	1	—
Dyspepsia ...	3	—	Prurigo ...	1	—
Ectyma ...	1	—	Rachites ...	1	—
Emphysema ...	1	—	Rheumatism ...	9	—
Enteritis ...	16	9	Retention of Urine ...	1	—
Epithelioma ...	1	1	Rupia ...	1	—
Febricula ...	2	—	Scrofala ...	1	1
Fever continued ...	2	—	Sims ...	2	—
Do. intermittent ...	4	—	Sprin ...	3	—
Do. remittent ...	91	1	Spinal irritation ...	1	—
Do. typhoid ...	2	—	Syphills ...	5	—
Fracture ...	15	—	Tales Mesenterica ...	1	1
Furunculosis ...	1	—	Tinea favosa ...	1	—
Gastricism ...	9	—	Tumour ...	1	1
Gastro enteritis ...	4	1	Ulcer, of Cornea ...	1	—
Gangrene ...	2	1	Ulcus ...	15	—
General Debility ...	25	8	White swelling ...	1	—
Gonorrhoea ...	1	—	Wounds ...	16	—
Haematuria ...	1	—			
Carried forward ...	246	40	Total ...	397	51

Table of Cases of the following Diseases occurring amongst Patients and also amongst Officers.

Name of Disease	Occurring amongst Patients			Occurring amongst Officers			
	Number of Cases	In case of Patients attacked while in Hospital, state how long the Person had been in Hospital before his attack and for what disease he was admitted	Number of Deaths	Resident Officers		Non-Resident Servants	
				Cases	Deaths	Cases	Deaths
Yellow Fever or other Endemic Fever ...							
Plague ...							
Typhus ...							
Smallpox ...	1	Admitted for Amenorrhoea typhoid fever set in on day of admission	Nil	Nil	Nil	Nil	Nil
Scarlatina ...							
Enteric (or Typhoid) Fever ...							
Erysipelas ...							
Pyemia ...							

HOSPITAL RETURNS, for the year 1892.

Gozo Hospital.

QUESTION I.

	Number remaining in Hospital at the beginning of the year	Number admitted during the year	Daily average in Hospital during the year	Attendance			Patients Discharged			Number who died in this	Average stay of those			Specify the longest time for which any one patient has stayed	
				Nurses doing no other duty	Servants partially or not at all employed as Nurses			Cured	Relieved		Not improved and at request	Died in this	Discharged		Remaining at the end of year
					Day Nurses and Night Nurses	Not Nurses	Partial Day Nurses								
Males	13	183	13	* 2	† 3	—	—	113	30	3	3†	24	80	51	135
Females	14	197	16	* 2	† 3	—	—	113	35	4	36	27	26	37	365

* For day and night duties. Extra Nurses are hired when required.

† One Porter, one Cook and one Labourer.

The Nurses attached to the Ospizio (Poor House,) which is in an adjoining building, perform also service in the Hospital by turn, during night, and when the nurses of the latter Institution are off duty.

‡ Laundresses.

QUESTION II.

Name and Number of each Ward	Length in feet	Benchs in feet	Height in feet	Number of Beds assigned to the Ward	Amount of Cubic Space Available for each Patient for the average duration of Patients in the Ward. Cubic feet	The greatest number of Patients in any one room during the year	Windows and Ventilating Appliances		Construction of the Privy with the Ward		Is there any Sink or Urin opening in Ward		Remarks
							Total area in square feet	Area capable of opening to outside feet	If Privy in Ward	If leading out of ward	Trapped?	Un-trapped?	
<i>Male Division—</i>													The privies of the Hospital are not in the immediate neighbourhood of the Wards. There is one Privy for each division at a convenient distance from the Wards.
Ward ... 1	63	17	20½	<i>8</i> 14	2,744	12	158	158	No	Yes	No	No	
" ... 2	63	17	20½	<i>5</i> 12	4,391	11	160	160	No	Yes	No	No	
<i>Female Division—</i>													
Ward ... 1	34	16½	20½	<i>6</i> 11	1,636	11	90	90	No	Yes	No	No	
" ... 2	34	16½	20½	<i>5</i> 10	1,983	9	88	88	No	Yes	No	No	
" ... 3	34	16½	20½	<i>4</i> 6	2,454	6	71	71	No	Yes	No	No	
Lying-in Ward ...	22½	19½	14½	<i>1</i> 5	6,418	3	73	73	No	Yes	No	No	

N.B.—Figures in italics show the "daily average of beds occupied."

Gozo Hospital—*continued.*QUESTION II—*continued.*

(I.) What quantity of Water is available for each Patient every day?

Any quantity, as the building is now connected with one of the aqueducts which supply the town of Victoria.

What is the source of the Water Supply?

Natural springs.

What is the quality of the Water?

Good in every respect. The water is naturally filtered through rock and soil before being collected into a stream and conveyed to a storage reservoir at Migiarro whence it is pumped through iron pipes.

(II.) Detail the arrangements as to Baths and Lavatories.

There are two lavatories (earthenware basins fixed in marble slabs) and a porcelain bath in each Division. The outlet pipes of baths and lavatories are completely disconnected

(III.) What is the system of Sewerage and what the condition of the Privies?

The dry-earth system is in use in this Hospital. Moule's earth system is now applied to the same, and it works in a very satisfactory manner.

HOSPITAL RETURNS, for the year 1892.

Gozo Hospital.—*continued.*

QUESTION III.

Number of Visits of Inspection paid to the Hospital during the year 1892.

Specifying the character of the Visit in respect to Notice	And stating the Official Position of the Visitors		
	By the Governor or Colonial Secretary	By a Government Inspector (or Malta the Comptroller)	By a Committee of the Governing Body
By Appointment		The Assistant Secretary visits daily the Institution. The Chief Government Medical Officer visits occasionally this Hospital.	
Of Surprise... ..			

(I.) In reference to the above Table, state whether or not the Register Books were produced on every occasion; and if not, on how many occasions they were not so produced.

All the Books are called for, in rotation, and minutely examined in the Assistant Secretary's Office.

(II.) And if on any occasion when they were examined, they were found not to be properly made up to date of examination.

Always up to date.

(III.) State also how many reports of the following kinds have come under the notice of the Governor:

- (a) Reports of a Financial and Statistical kind, especially such as show the system on which money and Store Accounts are kept and audited.
 - (b) Reports by Persons charged with the immediate management of the Hospital.
 - (c) Reports by a Government Inspector, independent of the Governing Authority of the Hospital.
- (Append copies of his Reports, if any).

The Assistant Secretary to Government for Gozo, has, under the organization of the Administration in that Island, been made directly responsible to the Head of the Government for the management of these Institutions and that Officer is, therefore, in constant correspondence with the Chief Secretary on all matters connected with the same.

HOSPITAL RETURNS, for the year 1892.

Gozo Hospital—continued.

QUESTION IV.

Table of cases of each kind of Disease treated in the Gozo Hospital during the year 1892, with the Number of Deaths from each such Disease:—

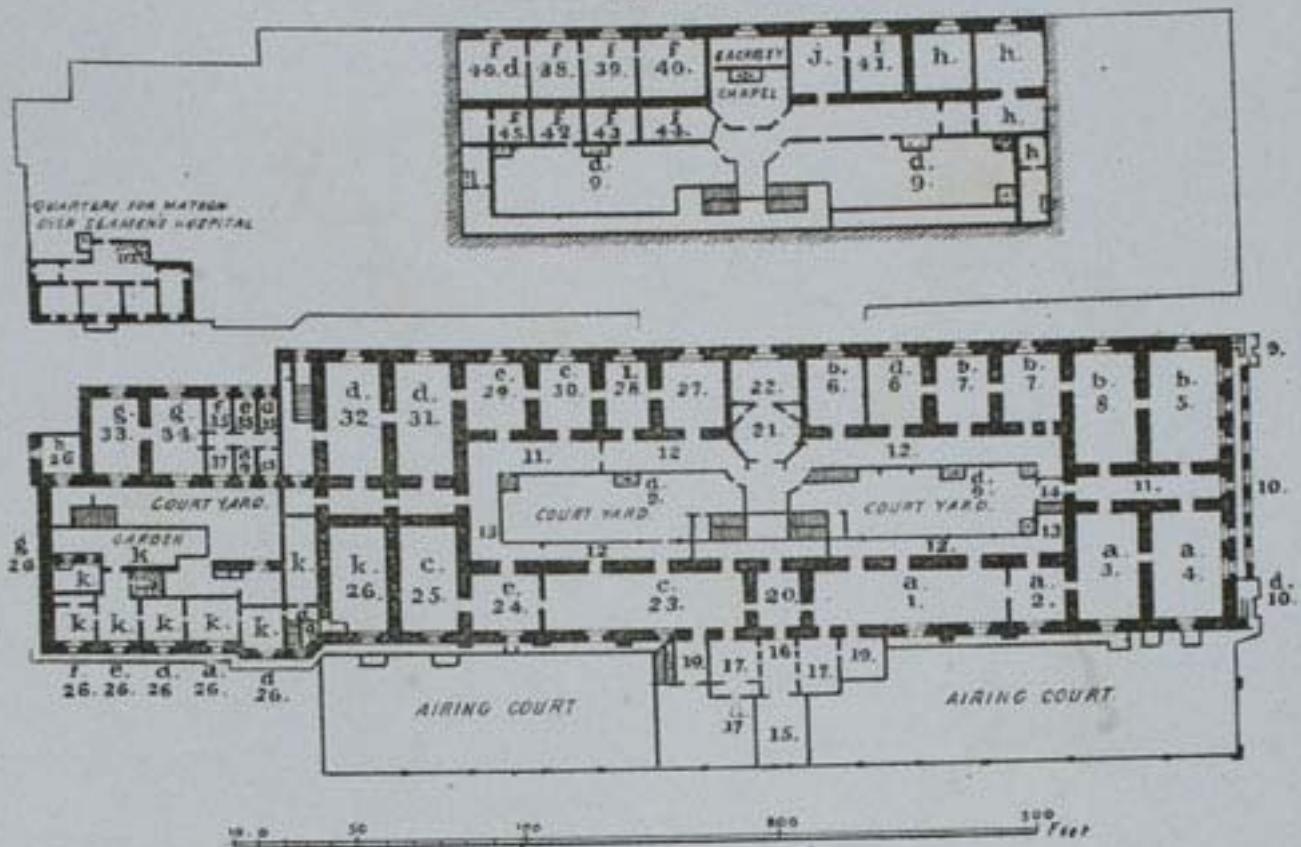
Disease treated Medical	Number of		Disease treated Surgical	Number of	
	Cases	Deaths		Cases	Deaths
Debility	11	2	Abscesses	7	
Rheumatism	9		Phlegmon	1	
Haemophilis	1	1	Gangrene	1	1
Diabetes mellitus	2	1	Anthrax	3	
Intermittent Fever	3		Ulcus	3	
Continued Remittent Fever	19	3	Warts	2	
Typhoid Fever	1	1	Cyst	6	
Influenza	8		Hydrops larsae synov :	1	
Acidalgia	2		Cancer	1	
Gastric catarrh	15	1	Necrosis of bones	1	
Gastritis	10	3	Incised wounds	2	
Enteritis	77	21	Contused and lac : wounds	11	
Haemorrhoids	1		Gun-shot wound	1	
Hepatic disease	3	1	Contusion	4	
Asthma	4		Fracture simple	5	1
Haemophthisis	2		.. Compound	1	
Bronchitis	23	2	Cerebral concussion	1	
Pleuritis	1		Conjunctivitis	3	
Pneumonitis	5	1	Blepharitis granul :	7	
Pneumonitis Caseosa	1		Trichiasis	3	
Phthisis pulmon :	11	5	Glancoma	1	
Cardiopathia	19	11	Keratitis	22	
Cerebral congestion	2		Fistula lacrimalis	1	
Apoplexy	9	4	Hernia	1	
Cerebral softening	1	1	Strangulated hernia	3	
Myelitis	2		Fistula ani	3	
Cerebral anaemia	1	1	Rodent ulcer	1	
Neuralgia	5		Scald	1	
Nervosis	2		Retention of urine	3	1
Epilepsy	2	1	Pregnant women	20	2
Leucorrhoea	1		Mothers with children	4	
Metrorrhagia	3		Children with mothers	3	
Dysmenorrhoea	1				
Metritis	1				
Nephritis	3				
Skin diseases	5				
Prog : res : muse atrophy	1	1			
Children with mothers	3				
Totals	270	62	Totals	137	5

Table of Cases of the following Diseases occurring amongst Patients and also amongst Officers.

Name of Disease	Occurring amongst Patients				Occurring amongst Officers			
	Number of Cases	In case of Patients attacked while in Hospital, state how long the Patient had been in Hospital before his attack, and for what disease he was admitted	Number of Deaths	Resident Officers		Non-Resident Servants		
				Cases	Deaths	Cases	Deaths	
Yellow Fever or other Endemic Fever	NIL		NIL	NIL	NIL	NIL	NIL	
Plague								
Typhus								
Smallpox								
Scarlatina								
Enteric (or Typhoid) Fever								
Erysipelas								
Pyæmia								

CENTRAL HOSPITAL.

UPPER FLOOR

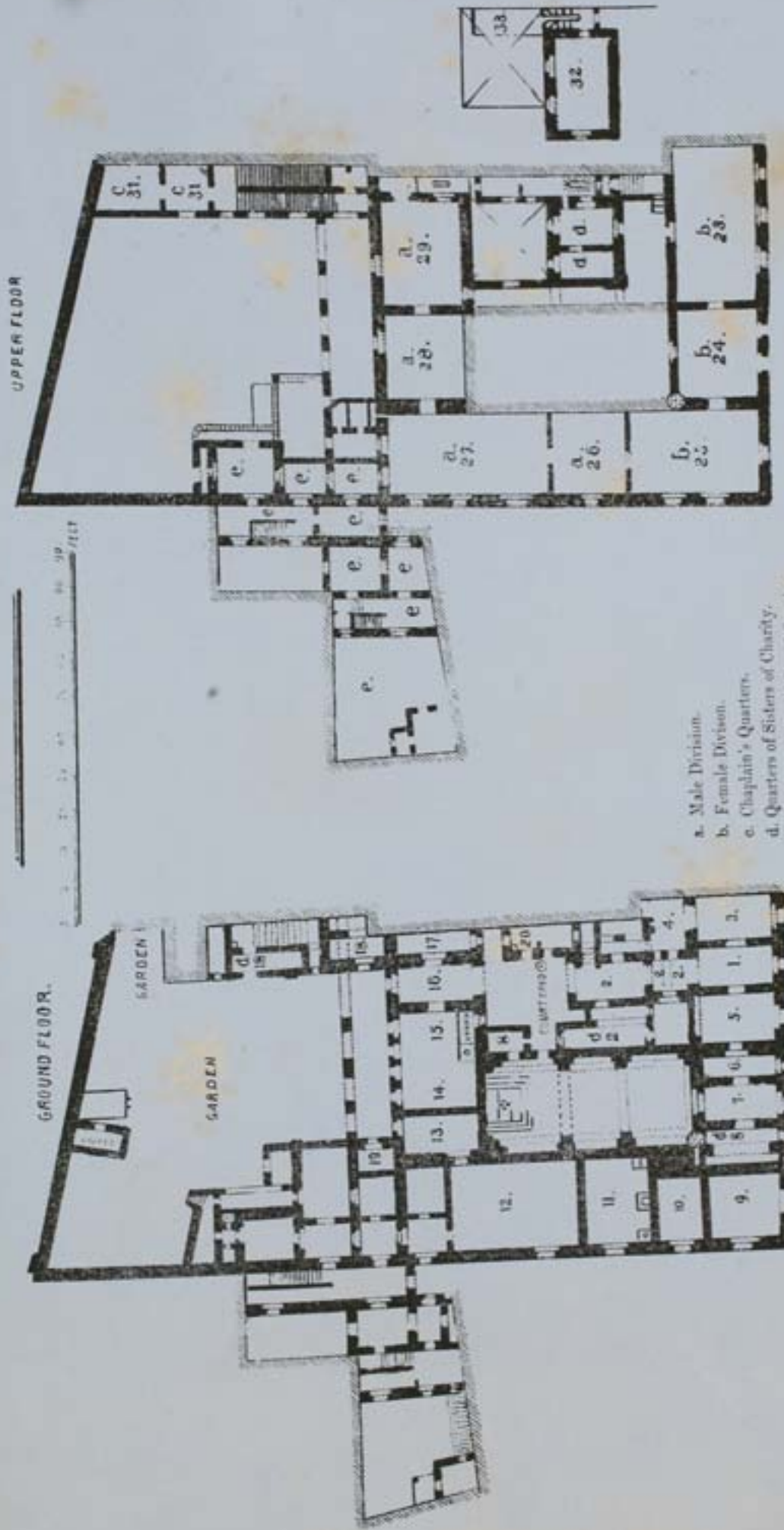


QUARTERS FOR ASSISTANT MEDICAL OFFICERS
OVER PRINCIPAL ENTRANCE, BATH AND
WAITING ROOMS.

- | | | |
|---|--|---|
| a. Male Medical Subdivisions. | 10d. Clothing and Bedding Store. | 36h. Mortuary Chamber and Post Mortem examination Room. |
| b. Male Surgical do. | 11. Dining Halls. | 27. Medical Officers' Duty Room. |
| c. Female Medical do. | 12. "Corridor de Service" connecting the several Subdivisions. | 28. Ward for special cases. |
| d. Female Surgical do. | 13. Scullery Troughs. | 29. Female Eye Ward. |
| e. Female Surgical Wards. | 14. Dinner lift. | 30. Gynaecological Ward. |
| f. Lying in Wards. | 15. Open entrance. | 31. Female Surgical Ward No. 1. |
| g. Female Venereal Wards. | 16. Entrance hall. | 32. Do. do. " 2. (Convalescent). |
| h. Quarters of Sisters of Charity. | 17. Receiving Rooms. | 33. Do. Venereal Ward " 3. |
| i. Ward for Special Cases. | 17d. Matron's Office. | 34. Do. do. " 4. |
| j. Quarters for Chaplain on duty. | 19. Baths, for depuration on admission and curative purposes. | 35. Storekeeper's Office. |
| k. Seamen's Hospital. | 20. Vestibule. | 35d. Patients' Effects. |
| 1. Male Medical Ward No. 1. | 21. General Dispensary. | 35e. Inspection Room. |
| 2. Do. do. " 2. for special cases. | 22. Medical Storekeeper's Office. | 35f. Seclusion Room. |
| 3. Do. do. " 3. | 23. Female Medical Ward No. 1. | 37. Bath Room. |
| 4. Convalescent Ward. | 24. Do. do. " 2. for special cases. | 38. Labour Room. |
| 5. Convalescent Ward Surgical Subdivision. | 25. Do. do. " 3. | 39. Patients waiting to be confined. |
| 6. Operating Theatre. | 26. Medical Ward, Seamen's Hospital. | 40. Patients confined. |
| 6d. Eye Ward. | 26d. Surgical Ward. Do. | 41. Ward for Special Cases. |
| 7. Male Surgical Wards Nos. 1, 2. | 26e. Entrance Hall. | 42. Scullery and Wardrobe. |
| 8. Do. do. " 3. | 26f. Matron's duty Room. | 43. Dining Room. |
| 9. Clinical Laboratory. | 26g. Kitchen. | 44. Day Room. |
| 9d. Latrines, Sinks, and Urinals. | | 45. Midwives and Student-Midwives. |
| 10. Gallery overlooking Military Parade Ground. | | |



HOSPITAL SANTO SPIRITO.



UPPER FLOOR

GROUND FLOOR.

GARDEN

GARDEN

0 10 20 30 40 50 60 70 80 90 100 Feet

- a. Male Division.
- b. Female Division.
- c. Chaplain's Quarters.
- d. Quarters of Sisters of Charity.
- e. Resident Medical Officers' Quarters.

- 1. Lobby.
- 2. Vestibule.
- 2d. Porter's Room.
- 3. Dispensary.
- 4. Laboratory.
- 5. Medical Officer's Duty Room.
- 6. Hospital Stores.
- 7. Entrance to Chapel.
- 8. Scriptorium.
- 8d. Passage to Dispensary.
- 9. Public Dispensary.
- 10. } Wash-House.
- 11. }
- 12. Store.
- 13. Passage to Store and Wash-House.
- 14. } Kitchen.
- 15. }
- 16. Passage to Male Division.
- 17. Pantry.
- 18. Provision Store.
- 18d. Fuel Store.
- 18f. Dead-House & Post Mortem Examination Room.
- 19. Officers' Water Closet.
- 20. Water Closets Urinals, and Sinks.
- 23. } Female Wards.
- 24. }
- 25. }
- 26. } Male Wards.
- 27. }
- 28. }
- 29. }
- 30. Patients' Effects Store.
- 31. Chaplain's Quarters.
- 32. Dormitory, upper story, built over d. for Sisters of Charity.
- 33. Terrace.

DIAGRAM OF THE JAWBORN

