

V

LUNATIC ASYLUM.

1897.

LUNATIC ASYLUM RETURN, for the year 1897.

Question I. (Statistical.)
GENERAL STATISTICAL TABLE.

	Remaining on 31st December 1896	Number Admitted during 1897	Daily Average Number during 1897	Number of Attendants				Discharges				Number of Patients who died in 1897	Average Stay of those			Remaining on 31st December 1897
				Resident		Non-Resident		Cured	Relieved	No improvement	Was subject for the Asylum		Died in 1897	Discharged in 1897	Remaining at end of 1897	
				Employed in Attendance on the Patients	Employed as Servants or only partially as Attendants	Employed in Attendance on the Patients	Employed as Servants or only partially as Attendants									
Male...	345	97	353	22	6	4	8	39	2	7	14	21	2610	260	3670	369
Female	246	41	252	23*	3†	1	4	7	3	4	2	12	2694	540	3535	759
Total	591	138	605	45	9	5	12	36	5	11	16	33	2640	326	3619	628

* Six are Sisters of Charity who perform duty only in the Female Division.
† One is a Sister of Charity in charge of the Wash-house.

OBITUARY TABLE.

Number of Document on Register	Age of decedent	Sex of decedent	Physic condition when admitted	Form of Mental Disorder	Date of Admission	Cause of Death	If a Coroner's inquest was held and verdict	If Post Mortem Examination was held
3686	44	M.	Sick	Lypemania	March 23, 95	Epilepsy	No Coroner's inquest was held	No Post Mortem examination was held
3282	48	M.	Good	Mania	April 11, 90	Cancer		
3821	56	M.	Sick	Alcoholism	February 4, 97	Apoplexy		
3830	70	M.	Sick	Mania	March 8, 97	Pyæmia		
2129	54	M.	Good	Del. Mania	September 7, 73	Heart disease		
3564	68	M.	Good	Del. Mania	October 4, 93	Debility		
3001	34	M.	Sick	Ep. Mania	August 24, 86	Epilepsy		
3820	75	M.	Sick	Alcoholism	February 3, 97	Apoplexy		
3853	83	M.	Sick	Dementia	June 10, 97	Heart disease		
1532	50	M.	Sick	Ep. Mania	July 14, 62	Epilepsy		
3804	46	M.	Weak	Lypemania	December 28, 96	Debility		
3865	57	M.	Sick	Lypemania	August 8, 97	Debility		
3874	48	M.	Sick	Mania	September 7, 97	Man. Exhaustion		
3307	28	M.	Sick	Lypemania	August 12, 90	Tuberculosis		
2767	57	M.	Sick	Mania	July 4, 83	Chronic Enteritis		
2900	42	M.	Good	Del. Mania	March 4, 85	Phthisis		
2406	57	M.	Sick	Ep. Mania	April 11, 78	Gastritis		
3672	43	M.	Sick	Del. Mania	November 21, 94	Soft. of the brain		
2906	76	M.	Good	Mania	March 16, 85	Enteritis		
3894	65	M.	Sick	Dementia	November 22, 97	Soft. of the brain		
3882	74	M.	Sick	Dementia	October 25, 97	Apoplexy		
2909	46	F.	Sick	Del. Mania	February 3, 97	Heart disease		
1324	83	F.	Good	Lypemania	October 11, 64	Heart disease		
2883	43	F.	Sick	Del. Mania	June 11, 96	Dysentery		
2683	24	F.	Good	Del. Mania	September 14, 92	Remittent Fever		
2930	31	F.	Sick	Mania	August 31, 97	Man. Exhaustion		
2846	52	F.	Sick	Mania	August 7, 95	Apoplexy		
1559	61	F.	Good	Mania	June 2, 70	Debility		
2275	69	F.	Good	Mania	February 26, 85	Apoplexy		
2933	49	F.	Weak	Lypemania	September 24, 97	Debility		
2938	60	F.	Sick	Dementia	November 16, 97	Debility		
2731	83	F.	Sick	Mania	July 4, 93	Heart disease		
2732	20	F.	Good	Idiotism	July 13, 93	Phthisis		

LUNATIC ASYLUM RETURN, for the year 1897.

SPACE AND ACCOMMODATION TABLE.

Description of Rooms	Number of such Rooms	Gross cubic space of all such Rooms	Gross superficial area of all such Rooms	Average amount of cubic space available for each inmate	Average temperature		Amount of Window Space
		Feet	Sq. Feet		Winter	Summer	
Dormitories ^a	59	583,100	26,408	1,024			Square feet 1,200
Day Rooms and Corridors used as Day Rooms	17	514,130	26,488	849	50°	67°	2,000
Single Rooms	36	57,647	3,573	1,601			302

^a Including those forming part of a detached building on the grounds of the Asylum, designated the Agricultural Colony, where persons chiefly belonging to the Agricultural Class are kept.

What is the source of the Water Supply ; the quality of the Water ; and the amount of water available for each patient every day ?

A natural spring, at a distance from the Asylum ; the quality is good ; and the quantity available for each patient every day is between 16 and 20 gallons for all Services. Water for drinking is supplied under pressure from the aqueduct.

What is the No. (I.) Lavatories ?
(II.) Baths ? †
(III.) Latrines ?

13. Marble Shelves with earthen basins.
17. 16 Carrara marble and 1 porcelain.
17. 13 in Wards, and 4 in the airing Courts, the former are provided with cross ventilated anterooms and with earthenware troughs flushed automatically and periodically, the latter have Crown basins with waste water preventors.

What is the system of Sewerage ?

A main sewer along and outside the building receives branches from all the latrines, bath rooms, skulleries and wash houses, and discharges its contents on the grounds at a distance from the Asylum. The whole system is provided with ventilating shafts and has an automatic and periodical flushing, and the sewage is used for irrigation.

† A small building has lately been erected in Central Yard, and supplied with all necessary hydropneumatic appliances.

Question II. (Management). RESTRAINT.

Restraint	Seclusion under Lock and Key	Restraint by Attendants	Mechanical Restraint
The number of times resorted to...	5		
The number of persons subjected to	2 patients	None	None
The greatest duration of, in any single instance	10 hours		

In reference to the above table state:—

I. By whose authority Patients are restrained ?

Only seclusion is used and it is ordered in writing by the Medical Officers.

II. What kinds of mechanical restraint are in use ?

Vide above.

III. Whether any, and if any, how many, cases of cruelty by attendants to patients have been brought to the notice of the proper authority, and what the result in each case ?

Two cases of ill treatment. The Attendants were discharged.

IV. What was the number of cases of injury to Patients (I.) By themselves ?

Nil.

(II.) By other Patients ?

Five slight, three serious.

(III.) By Attendants ?

Nil.

(OCCUPATION).

State the extent of

(I.) The airing Courts

(II.) And other grounds

ACRES R. P.

1 — 20

17 2 25

} Belonging to the Asylum.

Are the Patients, as a rule, given daily exercise, their health permitting?

Yes.

Are they confined to airing Courts, or or allowed to walk in other grounds, and sent beyond the Asylum?

Some are sent beyond the Asylum, others are allowed to walk in the grounds, and the remaining are confined to airing courts.

Are any means taken to amuse the patients, or to induce them to amuse themselves? Detail them.

Yes: cards, periodicals, magic lantern, theatricals, cosmorama exhibitions, pleasure trips, musical entertainments, occasional fêtes and religious festivals.

How many religious services were held in 1896?

Religious services are held daily.

What was the average attendance?

151. 89 Males and 62 Females.

In what building and how many could it contain?

In the Chapel, which is intended to contain about 160.

Give the daily average number of Patients who were employed in 1897.

Distinguishing the Sexes	Specifying the character of the employment		
	Agriculture and Gardening	Trade	Household Work, Drawing Water &c.
Males	42	127	54
Females	—	106	34
	42	233	88
	} 363		

Question III. (Diet).

Append the Dietary Table

Bread 20 oz. — Meat 4½ oz. — Paste or Rice 3 oz. — Vegetables 1½ ration
Fruit 1 ration — Wine ¼ pint — Coffee ½ pint and Sugar ½ oz.

Question IV. (Inspection).

Divide the patients in the Asylum into the following Classes:—

(I.) Maniacal and Dangerous...	105	94
(II.) Quiet Chronic	132	88
(III.) Melancholy and suicidal	69	39
(IV.) Idiotic, Paralytic, Epileptic	63	38
				369	259
Remaining on 31st December 1897	628	

LUNATIC ASYLUM RETURN, for the year 1897.

Distinguishing those visits in which all patients were seen and every part of the building visited from visits of Partial Inspection	and stating the Official Position of the Visitors							
	By the Governor or Colonial Secretary		By a Government Inspector		By a Committee of the Governing Body		By an Inspector specially charged to ascertain the continued sanity or otherwise of the Patients	
	By Appointment	By Surprise	By Appointment	By Surprise	By Appointment	By Surprise	By Appointment	By Surprise
1. Complete Inspection ...	His Excellency the Governor twice.		The Comptroller of Charit. Institutions frequently visits the Asylum by Appointment and by surprise		A Board inspects the Asylum once every week.		This duty is performed by the visiting Physician who attends three times a week. A Board meets weekly to admit and discharge patients.	
2. Partial Inspection ...								

State how many reports of the following kinds have come under the notice of the Governor :—

(I.) Financial and Statistical (showing, amongst other things, on what system, the Money and Store Accounts are kept and audited.)

(II.) Reports by the Person or Persons charged with the immediate management of the Asylum.

(III.) Reports by an Official Inspector independent of the Governing body of the Asylum.

(I.) The Comptroller of Charitable Institutions renders his Money Accounts, monthly, to the Auditor General, and a Store Account, annually, in the form prescribed by the Colonial Regulations.

(II.) The officers in charge of the Asylum send weekly, monthly, quarterly and annual statistical returns and monthly financial reports to the Comptroller of the Charitable Institutions as also several other reports regarding the management of the Asylum.

(III.) The Comptroller of Charitable Institutions performs this duty, and reports to Government the result of his inspections, when necessary.

Question I. Statistical.

GENERAL STATISTICAL TABLE.

Remaining on 31st December 1896	Number admitted during 1897	Daily average Number during 1897	Number of Officers and of Attendants		Discharged				Total	Remaining on 31st December 1897	
			Resident	Non Resident	Arrivants of age	Withdrawal	For misconduct	Death			
Males	48	4	45	4	6	5	3	—	1	9	43
Females	48	8	50	7 ⁰	2	—	2	—	—	2	54
	96	12	95	11	8	5	5	—	1	11	97

* Sisters of Charity who perform duty in Female Divisions.

SPACE AND ACCOMMODATION TABLE.

Description of Rooms	Number of each Room	Gross cubic space of all such Rooms	Gross superficial area of all such Rooms	Average amount of cubic space available for each inmate	Average temperature		Amount of Window Space
					Winter	Summer	
Dormitories (Male Division)	3 (Infirmary included)	98,662	4,732	2,055	—	—	Square feet 575
Do. (Female Do.)	1	106,299	4,572	2,214	52	91	472
Day Room (Male Do.)	1 (Chapel included)	114,174	5,677	2,378	—	—	525
Do. (Female Do.)	4	164,072	6,936	3,411	—	—	574
Yards of play grounds (Male Do.)	2	—	2,747	—	—	—	—
Do. (Female Do.)	1	—	4,953	—	—	—	—

What is the source of the Water Supply ;
the quality of the Water ; and the amount of
water available for each patient every day ?

Any quantity, as the building is directly
connected with the aqueducts which supply the
town. There is a constant supply both of
potable and second quality Water (hard).

What is the No. (I.) Lavatories ?

Two Marble Shelves with earthen basins.

(II.) Baths ?

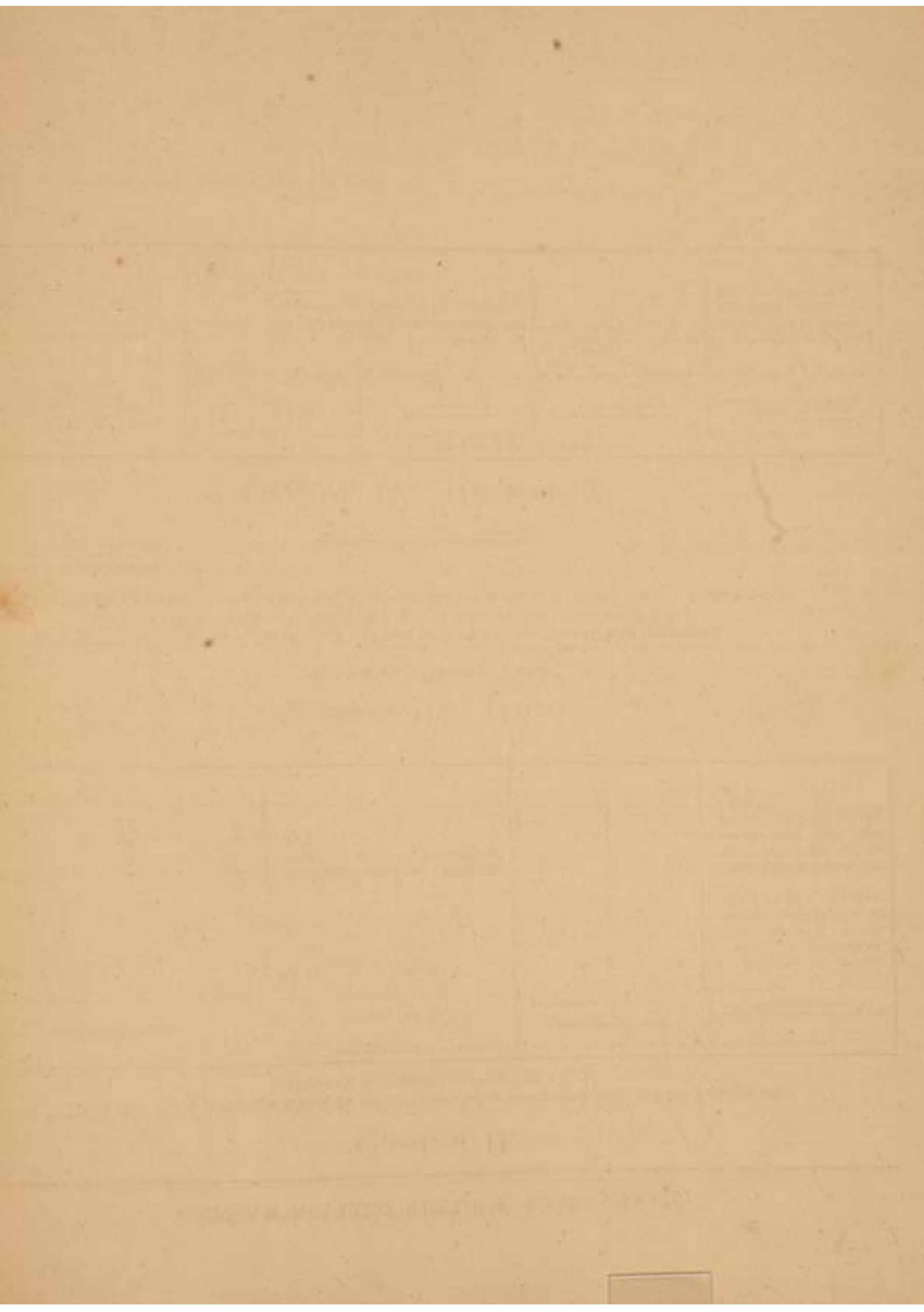
Two porcelain.

(III.) Latrines ?

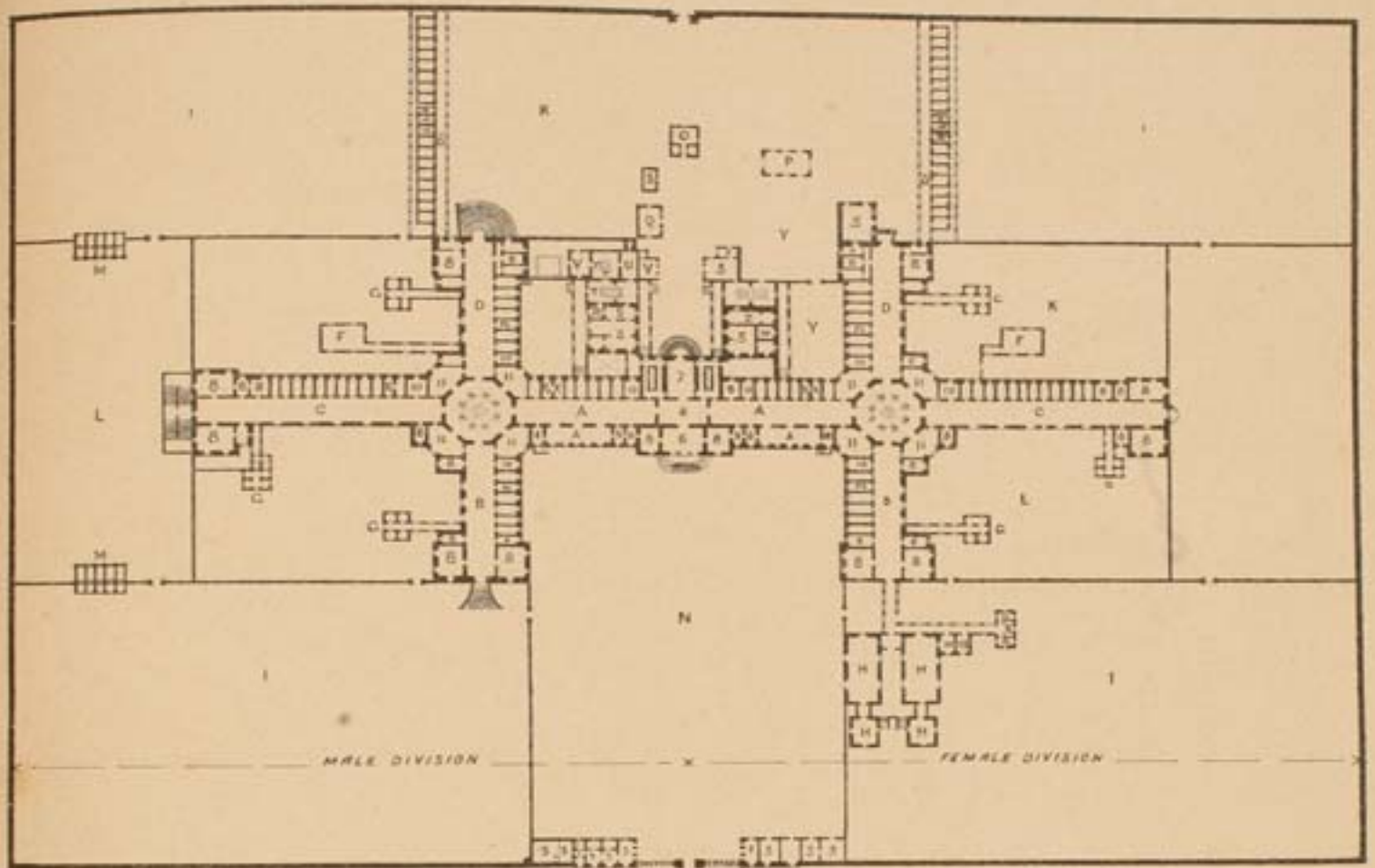
Two Crown basins with waste water
preventors.

What is the system of Sewerage ?

Water system. The Privies are separated
from the Wards.

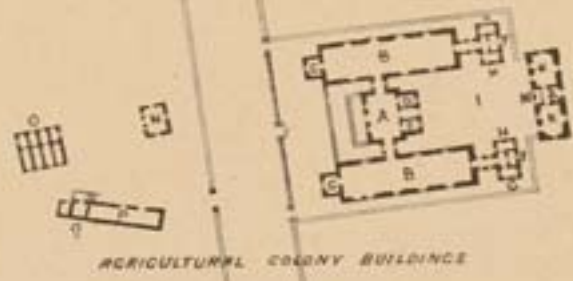


— LUNATIC ASYLUM —



MALE DIVISION

FEMALE DIVISION



AGRICULTURAL COLONY BUILDING

