

# News Release



Date: 24 October 2005  
No. : 225/2005  
Time of release: 11.00 hrs

Theme:  
Industry and Services

Compiled by:  
Tourism Statistics Unit  
e-mail: [tourism.nso@gov.mt](mailto:tourism.nso@gov.mt)  
Tel: 25997329



27 November 2005

The monthly calendar of NSO News Releases may be consulted on the Office's website at [www.nso.gov.mt](http://www.nso.gov.mt)

## Tourism

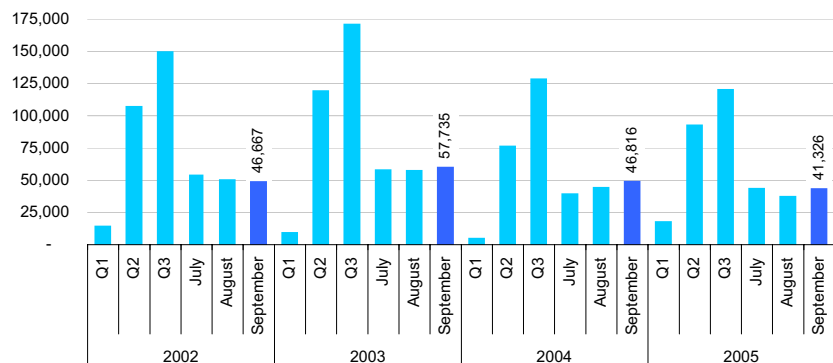
### Cruise passengers: September 2005

#### September 2005

In September this year, the number of cruise passengers arriving in Malta went down by 11.7 per cent, a drop of 5,490 cruise passengers over the corresponding month a year ago, to a total of 41,326.

#### Chart 1. Graphical Overview

Cruise passengers, total



Cruise passengers arriving from the German market went up by 5,614 to 7,882 from 2,268 in September last year. Other increases in arrivals were recorded from, amongst other, the Italian (+3,828), the Dutch (+211), the Austrian (+193), and a group of 'other' (+316) markets.

On the other hand, cruise passengers arriving from the UK decreased by 7,050 to 2,672 from 9,722 in the same month last year. Other drops in arrivals were registered from the Spanish (-4,168), the US (-2,343), the French (-863), the Norwegian (-258) and other relatively smaller markets.

#### January – September 2005

During the first nine months this year, the number of cruise passengers that visited Malta went up by 10.5 per cent, to 224,480, an increase of 21,292 persons over the same period last year. In the period under review, the major markets originated from Italy (59,939), Spain (45,993), Germany (35,829), and the US (18,587). Further illustrations can be looked up in page 3.

During the period under review, uninterruptedly the majority of the cruise passengers were females – see Chart 2. In January - September 2005 period, female-cruise-passengers accounted for 51.0 per cent of total.

The greatest proportion of cruise passengers - 34.3 per cent - were aged 40-59 years, followed by passengers aged 20-39 and 60-79 years, at 26.6 and 23.2 per cent respectively. Further analysis refer to page 4

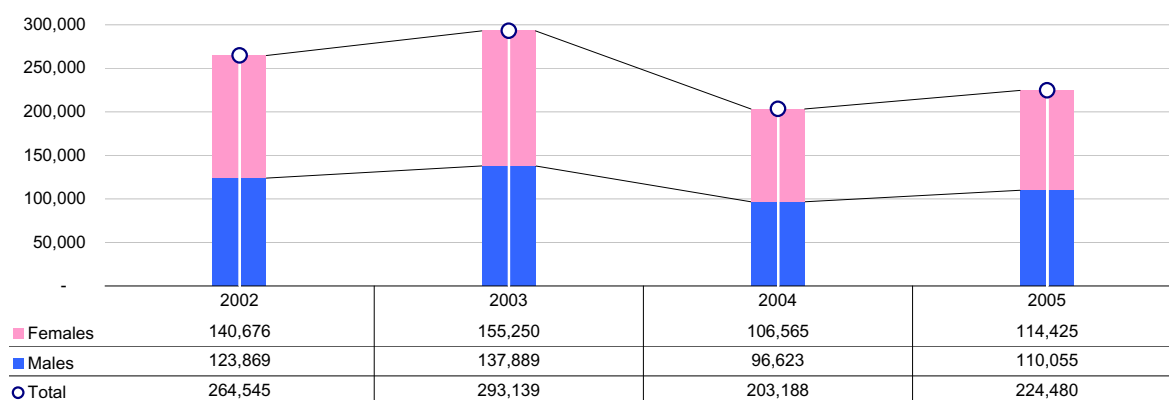
National Statistics Office  
Library & Information Unit  
Lascaris, Valletta CMR 02, Malta  
Tel: (+356) 25997219  
Fax: (+356) 25997205  
e-mail: [nso@gov.mt](mailto:nso@gov.mt)  
<http://www.nso.gov.mt>

Table 1. Cruise passengers arriving in Malta, September 2005

Country	Number of Passengers				Sex		
	Landed	Embarked	Transit	Total	Male	Female	Total
Austria	-	-	425	425	197	228	425
Belgium	-	-	179	179	85	94	179
Canada	-	-	1,115	1,115	493	622	1,115
Denmark	-	-	27	27	11	16	27
France	-	-	1,124	1,124	617	507	1,124
Germany	2	-	7,880	7,882	3,789	4,093	7,882
Greece	-	-	12	12	7	5	12
Ireland (Republic of)	-	2	74	76	29	47	76
Italy	5	1	10,687	10,693	5,914	4,779	10,693
Malta	782	636	1	1,419	641	778	1,419
Netherlands	140	117	266	523	250	273	523
Norway	-	-	35	35	14	21	35
Russia	-	2	82	84	33	51	84
Spain	-	-	8,306	8,306	4,045	4,261	8,306
Sweden	-	-	39	39	20	19	39
Switzerland	-	-	224	224	102	122	224
Turkey	-	-	83	83	40	43	83
U.K.	3	18	2,651	2,672	1,260	1,412	2,672
U.S.A.	59	3	2,925	2,987	1,333	1,654	2,987
Yugoslavia	-	-	5	5	4	1	5
Other	205	19	3,192	3,416	1,582	1,834	3,416
<b>Total</b>	<b>1,196</b>	<b>798</b>	<b>39,332</b>	<b>41,326</b>	<b>20,466</b>	<b>20,860</b>	<b>41,326</b>

Chart 2. January - September 2005

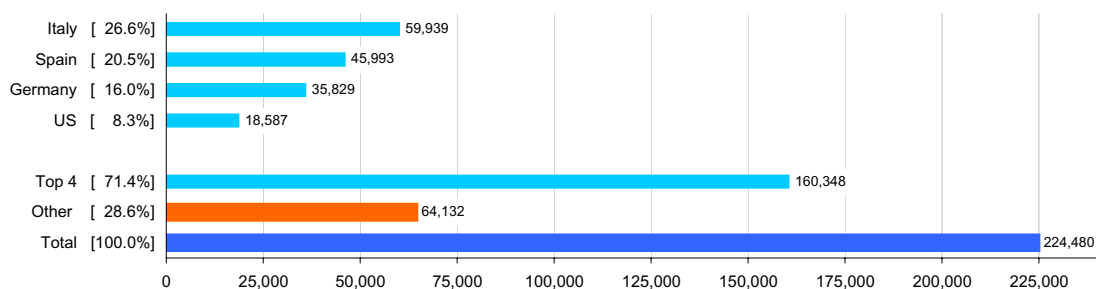
Total Cruise passengers, by sex



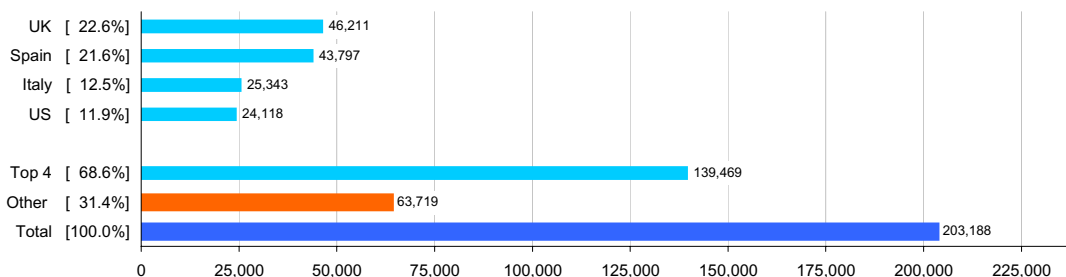
**Table 2. Cruise passengers arriving in Malta classified by country of origin**

Country	September			January - September		
	2004	2005	Annual change	2004	2005	Annual change
Austria	232	425	193	3,288	3,358	70
Belgium	89	179	90	833	887	54
Canada	1,276	1,115	-161	5,379	4,420	-959
Denmark	199	27	-172	935	320	-615
France	1,987	1,124	-863	15,510	14,638	-872
Germany	2,268	7,882	5,614	8,873	35,829	26,956
Greece	10	12	2	748	822	74
Ireland (Republic of)	191	76	-115	1,020	236	-784
Italy	6,865	10,693	3,828	25,343	59,939	34,596
Malta	1,658	1,419	-239	6,830	7,199	369
Netherlands	312	523	211	1,466	2,514	1,048
Norway	293	35	-258	1,549	156	-1,393
Russia	127	84	-43	414	463	49
Spain	12,474	8,306	-4,168	43,797	45,993	2,196
Sweden	221	39	-182	1,193	136	-1,057
Switzerland	417	224	-193	3,521	3,377	-144
Turkey	41	83	42	141	305	164
U.K.	9,722	2,672	-7,050	46,211	11,185	-35,026
U.S.A.	5,330	2,987	-2,343	24,118	18,587	-5,531
Yugoslavia	4	5	1	13	23	10
Others	3,100	3,416	316	12,006	14,093	2,087
<b>Total</b>	<b>46,816</b>	<b>41,326</b>	<b>-5,490</b>	<b>203,188</b>	<b>224,480</b>	<b>21,292</b>

**Chart 3. January - September 2005**  
Cruise passengers - by country of origin



**Chart 4. January - September 2004**  
Cruise passengers - by country of origin

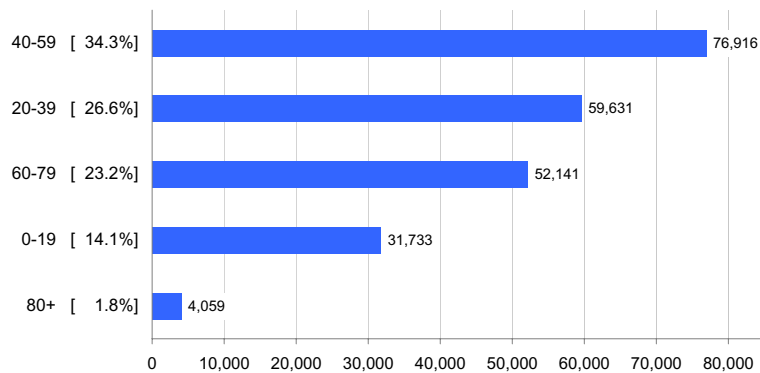


**Table 3. Monthly cruise passengers arriving in Malta classified by age-group, 2005**

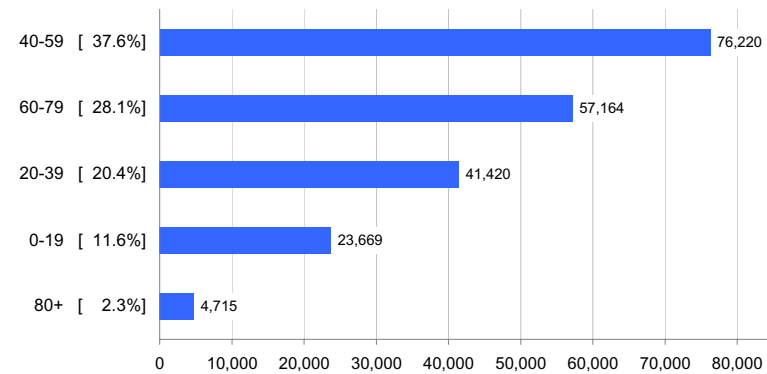
Age Group	2005									
	January	February	March	April	May	June	July	August	September	Total
0 - 4	43	59	89	256	390	558	798	796	584	<b>3,573</b>
5 - 9	8	31	208	422	572	1,058	2,429	2,206	1,316	<b>8,250</b>
10 - 19	39	139	1,058	1,252	1,200	2,119	6,226	5,423	2,454	<b>19,910</b>
20 - 29	221	396	868	2,004	3,268	4,155	4,982	4,480	6,322	<b>26,696</b>
30 - 39	403	650	865	2,583	4,509	4,673	6,016	6,198	7,038	<b>32,935</b>
40 - 49	512	823	1,214	3,135	5,256	5,111	8,535	7,575	7,068	<b>39,229</b>
50 - 59	548	995	1,420	4,299	6,614	5,884	6,294	4,973	6,660	<b>37,687</b>
60 - 69	835	985	1,559	4,874	7,982	5,059	3,854	2,308	5,837	<b>33,293</b>
70 - 79	428	403	597	3,185	5,212	2,737	1,887	1,101	3,298	<b>18,848</b>
80 - 89	95	48	107	584	1,004	526	306	204	620	<b>3,494</b>
90 - 99	12	5	12	64	84	74	98	84	129	<b>562</b>
100 - 109	-	-	-	-	1	2	-	-	-	<b>3</b>
<b>Total</b>	<b>3,144</b>	<b>4,534</b>	<b>7,997</b>	<b>22,658</b>	<b>36,092</b>	<b>31,956</b>	<b>41,425</b>	<b>35,348</b>	<b>41,326</b>	<b>224,480</b>

4

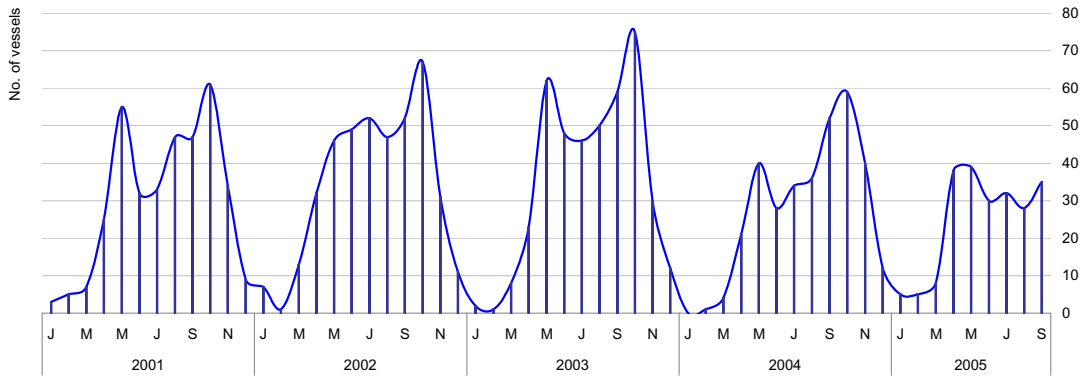
**Chart 5. January - September 2005**  
Cruise passengers - by age group



**Chart 6. January - September 2004**  
Cruise passengers - by age group



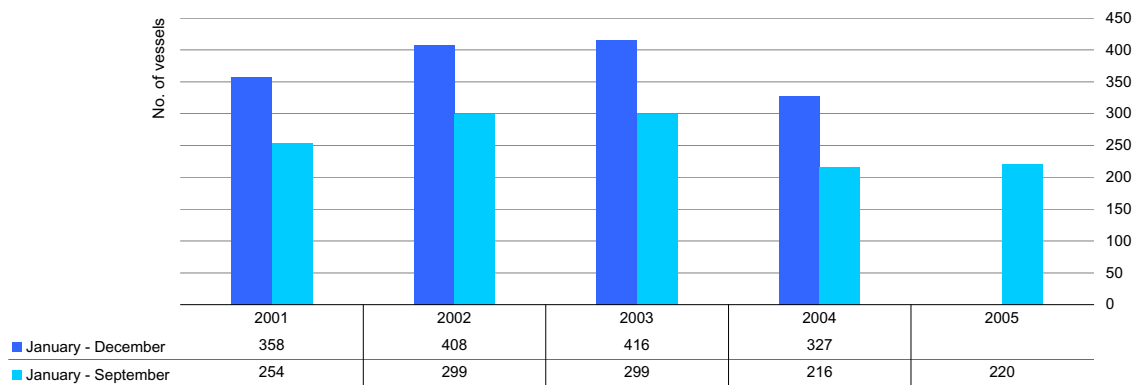
**Chart 7. Monthly cruise liner calls 2001 - 2005**



**Table 4. Monthly cruise liner calls: 2001 - 2005**

Month	2001	2002	2003	2004	2005
January	3	7	2	0	5
February	5	1	1	1	5
March	7	13	8	4	8
April	25	32	23	21	38
May	55	46	62	40	39
June	32	49	48	28	30
July	33	52	46	34	32
August	47	47	50	36	28
September	47	52	59	52	35
October	61	67	75	59	
November	34	31	30	40	
December	9	11	12	12	

**Chart 8. Cruise liner calls: 2001 - 2005**



## **Methodological Notes**

1. The data in this release are compiled on the basis of administrative records held by the Malta Maritime Authority.
2. Data should be considered as final and is not normally subject to further revisions.

## **Definitions:**

- Landed passengers covers all cruise passengers that arrived in Malta with a cruise ship and left Malta with other means of transport or stayed in Malta.

- Embarked passengers covers all cruise passengers that are either Maltese and left Malta with a cruise ship or else are foreigners that came to Malta by other means of transport and left Malta by a cruise ship.

- Transit passengers' covers all cruise passengers that arrived in Malta by a cruise ship and left Malta by the same cruise ship.