

News Release



Date: 18 April 2005
No. : 72/2005
Time of release: 11.00 hrs

Theme:
**Population and Social
Conditions**

Compiled by:

Education & Culture Statistics Unit
e-mail: library.nso@gov.mt
Tel: 25997629

The monthly calendar of
NSO News Releases may be
consulted on the Office's
website at www.nso.gov.mt

Culture

Local Councils 2004

This news release covers data on local councils for the year 2004.

The total number of activities organised by local councils in Malta and Gozo decreased, from 1,208 in 2003 to 947 in 2004, a decrease of 21.6 per cent. This was mainly due to a large decrease in the number of educational activities held – these registered a drop of over 40 per cent. In the year under review, social activities made up the lion's share, constituting 30 per cent of all activities staged. Cultural activities were a close second with 25.3 per cent, and educational activities were third with 18.8 per cent of the total. Only two therapeutic and five political activities were held.

Participation in local council activities also decreased, this time by 7.6 per cent, from 76,653 to 70,811. However, this still represents an increase of 13.6 per cent over the 62,345 participants in 2002. Social and cultural activities were the activities with the highest turnout rates, clocking up 39 and 24.6 per cent of the total turnout respectively. Political and therapeutic activities were the least popular, with a 0.3 and 0.1 per cent turnout respectively. Apart from the activities mentioned, 'other' activities included a book launch, various talks, and a poster competition.

Of the 68 local councils operative in the Maltese islands, around half of these mounted various exhibitions in 2004, to the tune of 87 exhibitions. This represents a decrease of 13.9 per cent over the previous year. The most popular exhibitions were painting exhibitions, constituting 39.1 per cent of all exhibitions held. Craftwork exhibitions were also popular - these made up 29.9 per cent of total exhibitions. Ceramic exhibitions were the least popular, making up only 3.5 per cent of total exhibitions. 'Other' exhibitions also made up 12.6 per cent; these included exhibitions on philately, medicinal plants, the work done by the local council and a Mediterranean food festival.

In the year 2004, full-time staff employed with local councils – including voluntary staff – decreased from 611 in the year 2003 to 521, a decrease of around fifteen per cent. On the other hand, part-time employment increased by 14.3 per cent. Female staff, both full-time and part-time, accounted for 32.3 per cent of the total staff employed with local councils in 2004. The largest number of staff employed – excluding voluntary workers – was administrative staff; these accounted for 35.9 per cent of full-time and 12.5 per cent of part-time personnel, or 30 per cent of the total personnel employed ■

National Statistics Office
Library & Information Unit
Lascaris, Valletta CMR 02, Malta
Tel: (+356) 21239225/25997219
Fax: (+356) 21249841
e-mail: nso@gov.mt
<http://www.nso.gov.mt>

Table 1. Number of local council activities by type

| Type of activity | 2002 | 2003 | 2004 |
|------------------|------------|--------------|------------|
| Social | 294 | 326 | 284 |
| Religious | 48 | 53 | 29 |
| Political | 5 | 1 | 5 |
| Educational | 166 | 309 | 178 |
| Sports | 79 | 159 | 90 |
| Environment | 54 | 48 | 40 |
| Cultural | 221 | 224 | 240 |
| Philanthropic | 23 | 36 | 22 |
| International | 19 | 23 | 32 |
| Therapeutic | 8 | - | 2 |
| Other | 40 | 29 | 25 |
| Total | 957 | 1,208 | 947 |

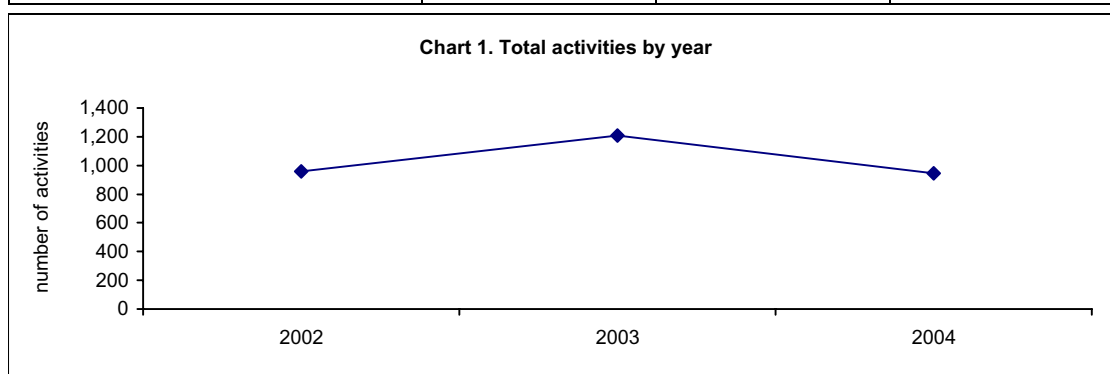


Table 2. Percentage distribution of local council activities by type

| Type of activity | 2002 | 2003 | 2004 |
|------------------|--------------|--------------|--------------|
| | % | | |
| Social | 30.7 | 27.0 | 30.0 |
| Religious | 5.0 | 4.4 | 3.1 |
| Political | 0.5 | 0.1 | 0.5 |
| Educational | 17.3 | 25.6 | 18.8 |
| Sports | 8.3 | 13.1 | 9.5 |
| Environment | 5.7 | 4.0 | 4.2 |
| Cultural | 23.1 | 18.5 | 25.3 |
| Philanthropic | 2.4 | 3.0 | 2.3 |
| International | 2.0 | 1.9 | 3.4 |
| Therapeutic | 0.8 | - | 0.3 |
| Other | 4.2 | 2.4 | 2.6 |
| Total | 100.0 | 100.0 | 100.0 |

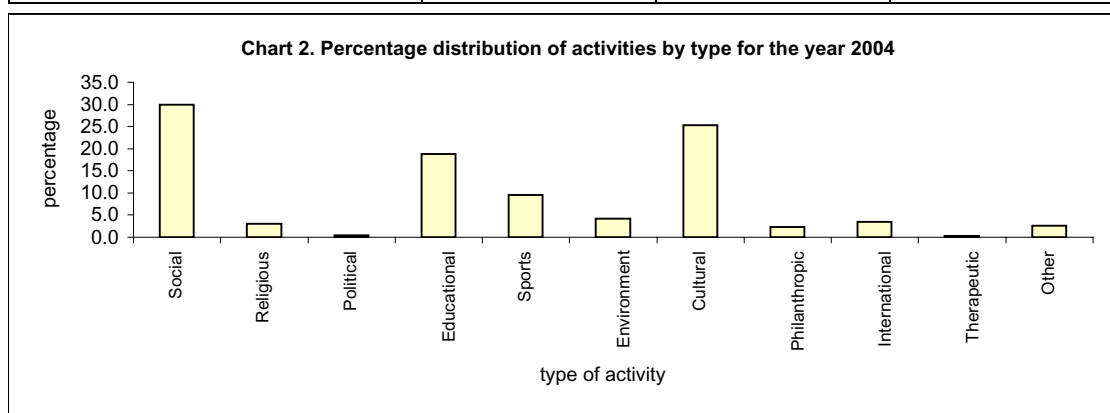


Table 3. Participation in local council activities by type

| Type of activity | 2002 | 2003 | 2004 |
|------------------|---------------|---------------|---------------|
| Social | 23,075 | 26,236 | 27,698 |
| Religious | 2,151 | 3,730 | 4,015 |
| Political | 103 | 100 | 205 |
| Educational | 6,961 | 6,239 | 7,914 |
| Sports | 4,766 | 5,646 | 6,324 |
| Environment | 2,698 | 1,544 | 1,961 |
| Cultural | 18,990 | 28,085 | 17,450 |
| Philanthropic | 610 | 1,783 | 1,594 |
| International | 913 | 1,170 | 1,884 |
| Therapeutic | 78 | - | 30 |
| Other | 2,000 | 2,120 | 1,736 |
| Total | 62,345 | 76,653 | 70,811 |

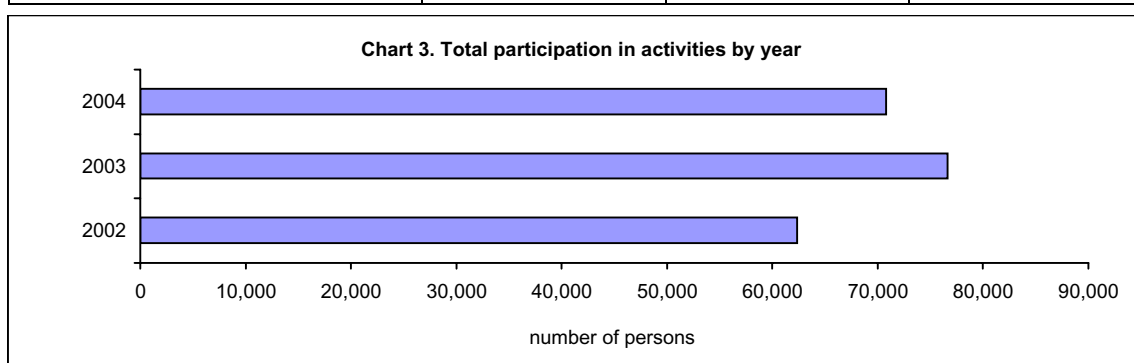


Table 4. Percentage distribution of participation in local council activities by type

| Type of activity | 2002 | 2003 | 2004 |
|------------------|--------------|--------------|--------------|
| | % | | |
| Social | 37.0 | 34.2 | 39.0 |
| Religious | 3.4 | 4.9 | 5.7 |
| Political | 0.2 | 0.1 | 0.3 |
| Educational | 11.2 | 8.1 | 11.2 |
| Sports | 7.6 | 7.4 | 8.9 |
| Environment | 4.3 | 2.0 | 2.8 |
| Cultural | 30.5 | 36.7 | 24.6 |
| Philanthropic | 1.0 | 2.3 | 2.2 |
| International | 1.5 | 1.5 | 2.7 |
| Therapeutic | 0.1 | - | 0.1 |
| Other | 3.2 | 2.8 | 2.5 |
| Total | 100.0 | 100.0 | 100.0 |

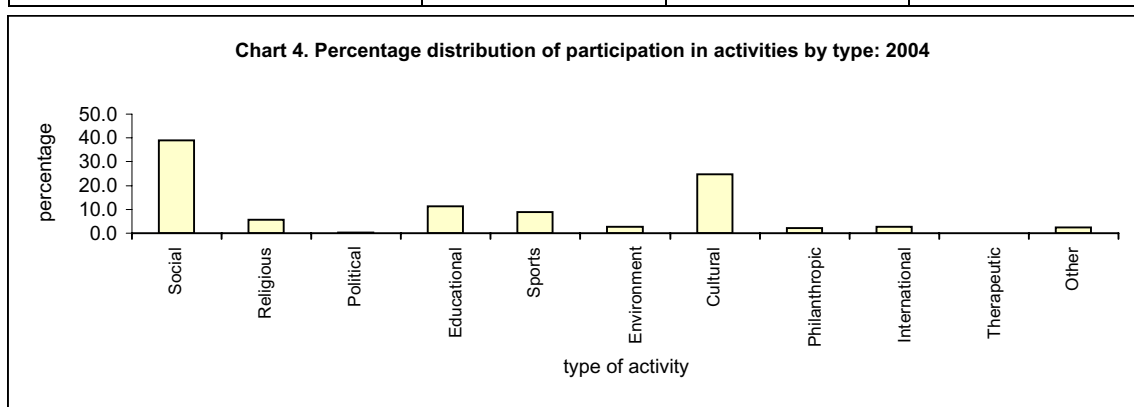


Table 5. Number of exhibitions by type

| Type of exhibition | 2002 | 2003 | 2004 |
|--------------------|-----------|------------|-----------|
| Painting | 20 | 48 | 34 |
| Sculpture | 16 | 9 | 7 |
| Ceramic | 7 | 4 | 3 |
| Photography | 5 | 9 | 6 |
| Craftwork | 22 | 27 | 26 |
| Other | 6 | 4 | 11 |
| Total | 76 | 101 | 87 |

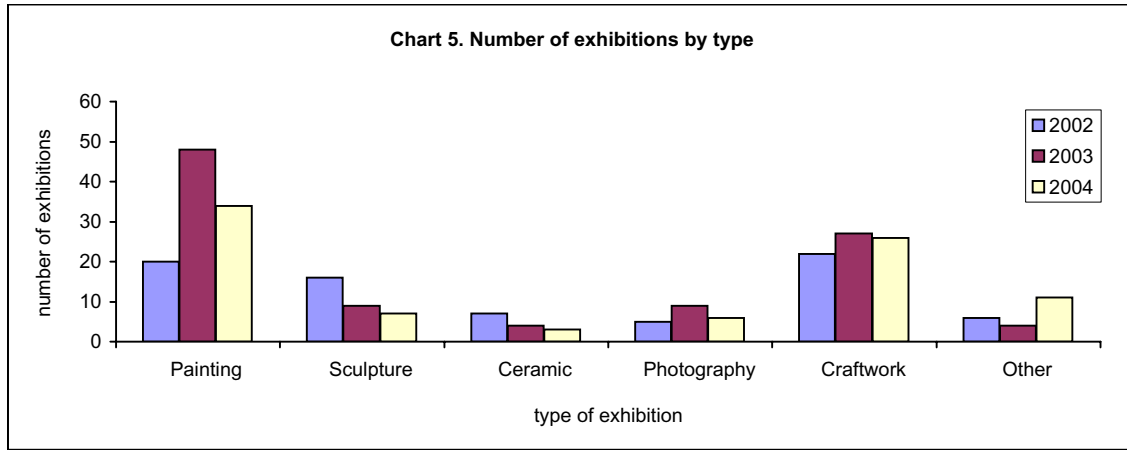


Table 6. Percentage distribution of exhibitions by type

| Type of exhibition | 2002 | 2003 | 2004 |
|--------------------|--------------|--------------|--------------|
| | % | | |
| Painting | 26.3 | 47.5 | 39.1 |
| Sculpture | 21.1 | 8.9 | 8.0 |
| Ceramic | 9.2 | 4.0 | 3.5 |
| Photography | 6.6 | 8.9 | 6.9 |
| Craftwork | 28.9 | 26.7 | 29.9 |
| Other | 7.9 | 4.0 | 12.6 |
| Total | 100.0 | 100.0 | 100.0 |

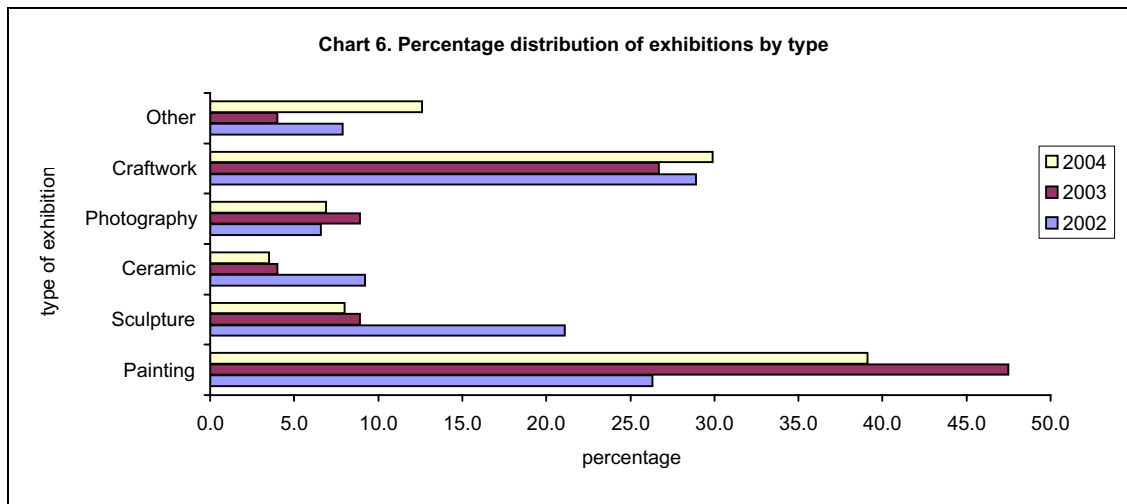


Table 7. Full-time personnel employed with local councils

| Employment structure | 2002 | | | 2003 | | | 2004 | | |
|----------------------|------------|------------|------------|------------|------------|------------|------------|------------|------------|
| | Males | Females | Total | Males | Females | Total | Males | Females | Total |
| Administrative staff | 64 | 114 | 178 | 72 | 119 | 191 | 62 | 125 | 187 |
| Technical staff | 2 | 1 | 3 | 2 | - | 2 | 2 | - | 2 |
| Other Staff | 39 | 12 | 51 | 49 | 9 | 58 | 85 | 11 | 96 |
| Voluntary Staff | 215 | 59 | 274 | 235 | 125 | 360 | 194 | 42 | 236 |
| Total | 320 | 186 | 506 | 358 | 253 | 611 | 343 | 178 | 521 |

Chart 7. Full-time personnel employed with local councils

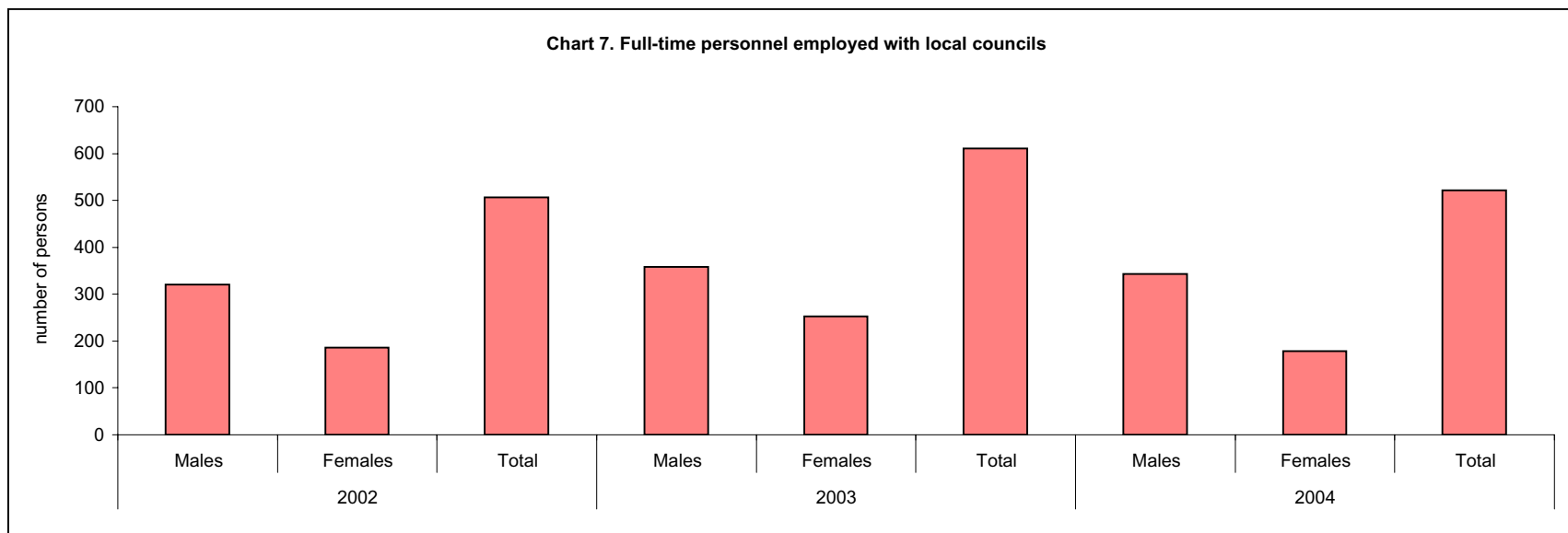


Table 8. Percentage distribution of full-time personnel employed with local councils by type

| Employment structure | 2002 | | | 2003 | | | 2004 | | |
|----------------------|--------------|--------------|--------------|--------------|--------------|--------------|--------------|--------------|--------------|
| | Males | Females | Total | Males | Females | Total | Males | Females | Total |
| | % | | | | | | | | |
| Administrative staff | 20.0 | 61.3 | 35.2 | 20.1 | 47.0 | 31.3 | 18.1 | 70.2 | 35.9 |
| Technical staff | 0.6 | 0.5 | 0.6 | 0.6 | - | 0.3 | 0.6 | - | 0.4 |
| Other Staff | 12.2 | 6.5 | 10.1 | 13.7 | 3.6 | 9.5 | 24.7 | 6.2 | 18.4 |
| Voluntary Staff | 67.2 | 31.7 | 54.1 | 65.6 | 49.4 | 58.9 | 56.6 | 23.6 | 45.3 |
| Total | 100.0 | 100.0 | 100.0 | 100.0 | 100.0 | 100.0 | 100.0 | 100.0 | 100.0 |

Table 9. Percentage distribution of full-time personnel employed with local councils by gender

| Employment structure | 2002 | | | 2003 | | | 2004 | | |
|----------------------|-------------|-------------|--------------|-------------|-------------|--------------|-------------|-------------|--------------|
| | Males | Females | Total | Males | Females | Total | Males | Females | Total |
| | % | | | | | | | | |
| Administrative staff | 36.0 | 64.0 | 100.0 | 37.7 | 62.3 | 100.0 | 33.2 | 66.8 | 100.0 |
| Technical staff | 66.7 | 33.3 | 100.0 | 100.0 | - | 100.0 | 100.0 | - | 100.0 |
| Other Staff | 76.5 | 23.5 | 100.0 | 84.5 | 15.5 | 100.0 | 88.5 | 11.5 | 100.0 |
| Voluntary Staff | 78.5 | 21.5 | 100.0 | 65.3 | 34.7 | 100.0 | 82.2 | 17.8 | 100.0 |
| Total | 63.2 | 36.8 | 100.0 | 58.6 | 41.4 | 100.0 | 65.8 | 34.2 | 100.0 |

Table 10. Part-time personnel employed with local councils

| Employment structure | 2002 | | | 2003 | | | 2004 | | |
|----------------------|-----------|-----------|------------|-----------|-----------|------------|------------|-----------|------------|
| | Males | Females | Total | Males | Females | Total | Males | Females | Total |
| Administrative staff | 4 | 16 | 20 | 5 | 17 | 22 | 5 | 17 | 22 |
| Technical staff | 9 | 2 | 11 | - | - | - | - | - | - |
| Other Staff | 9 | 24 | 33 | 7 | 12 | 19 | 3 | 8 | 11 |
| Voluntary Staff | 73 | 44 | 117 | 85 | 28 | 113 | 121 | 22 | 143 |
| Total | 95 | 86 | 181 | 97 | 57 | 154 | 129 | 47 | 176 |

Chart 8. Part-time personnel employed with local councils

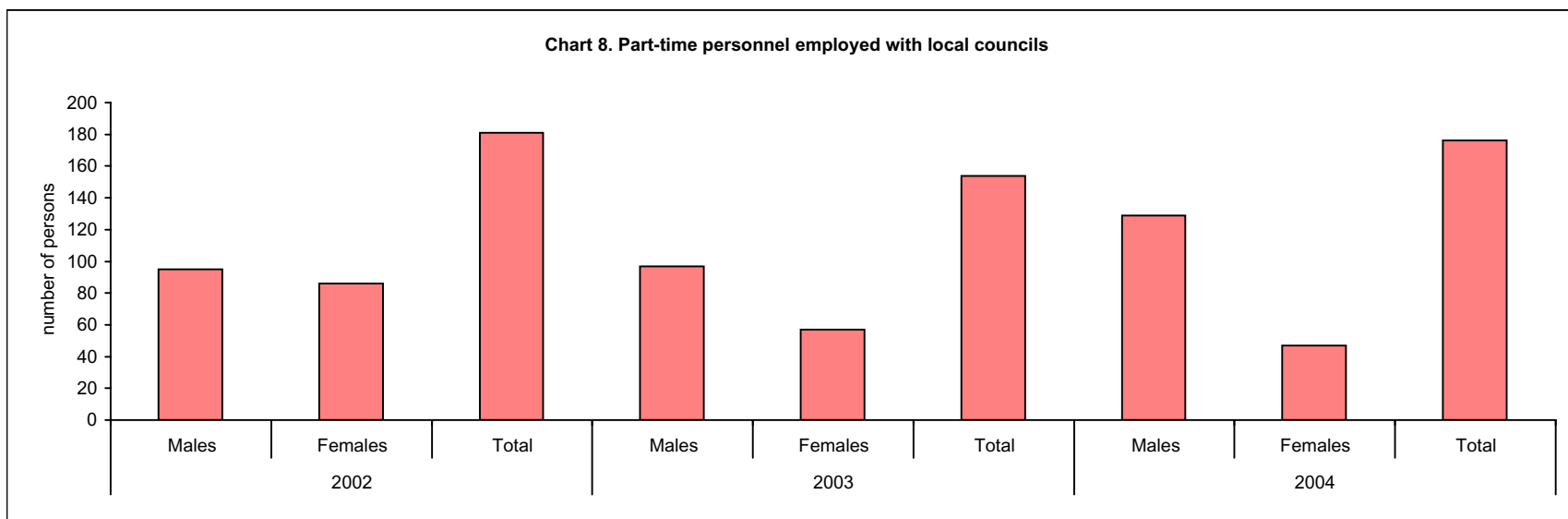


Table 11. Percentage distribution of part-time personnel employed with local councils by type

| Employment structure | 2002 | | | 2003 | | | 2004 | | |
|----------------------|--------------|--------------|--------------|--------------|--------------|--------------|--------------|--------------|--------------|
| | Males | Females | Total | Males | Females | Total | Males | Females | Total |
| | % | | | | | | | | |
| Administrative staff | 4.2 | 18.6 | 11.0 | 5.2 | 29.8 | 14.3 | 3.9 | 36.2 | 12.5 |
| Technical staff | 9.5 | 2.3 | 6.1 | - | - | - | - | - | - |
| Other Staff | 9.5 | 27.9 | 18.3 | 7.2 | 21.1 | 12.3 | 2.3 | 17.0 | 6.2 |
| Voluntary Staff | 76.8 | 51.2 | 64.6 | 87.6 | 49.1 | 73.4 | 93.8 | 46.8 | 81.3 |
| Total | 100.0 | 100.0 | 100.0 | 100.0 | 100.0 | 100.0 | 100.0 | 100.0 | 100.0 |

Table 12. Percentage distribution of part-time personnel employed with local councils by gender

| Employment structure | 2002 | | | 2003 | | | 2004 | | |
|----------------------|-------------|-------------|--------------|-------------|-------------|--------------|-------------|-------------|--------------|
| | Males | Females | Total | Males | Females | Total | Males | Females | Total |
| | % | | | | | | | | |
| Administrative staff | 20.0 | 80.0 | 100.0 | 22.7 | 77.3 | 100.0 | 22.7 | 77.3 | 100.0 |
| Technical staff | 81.8 | 18.2 | 100.0 | - | - | 0.0 | - | - | - |
| Other Staff | 27.3 | 72.7 | 100.0 | 36.8 | 63.2 | 100.0 | 27.3 | 72.7 | 100.0 |
| Voluntary Staff | 62.4 | 37.6 | 100.0 | 75.2 | 24.8 | 100.0 | 84.6 | 15.4 | 100.0 |
| Total | 52.5 | 47.5 | 100.0 | 63.0 | 37.0 | 100.0 | 73.3 | 26.7 | 100.0 |

Table 13. Total personnel employed with local councils

| Employment structure | 2002 | | | 2003 | | | 2004 | | |
|----------------------|------------|------------|------------|------------|------------|------------|------------|------------|------------|
| | Males | Females | Total | Males | Females | Total | Males | Females | Total |
| Administrative staff | 68 | 130 | 198 | 77 | 136 | 213 | 67 | 142 | 209 |
| Technical staff | 11 | 3 | 14 | 2 | - | 2 | 2 | - | 2 |
| Other Staff | 48 | 36 | 84 | 56 | 21 | 77 | 88 | 19 | 107 |
| Voluntary Staff | 288 | 103 | 391 | 320 | 153 | 473 | 315 | 64 | 379 |
| Total | 415 | 272 | 687 | 455 | 310 | 765 | 472 | 225 | 697 |

Table 14. Percentage distribution of total personnel employed with local councils by type

| Employment structure | 2002 | | | 2003 | | | 2004 | | |
|----------------------|--------------|--------------|--------------|--------------|--------------|--------------|--------------|--------------|--------------|
| | Males | Females | Total | Males | Females | Total | Males | Females | Total |
| | % | | | | | | | | |
| Administrative staff | 16.4 | 47.8 | 28.8 | 16.9 | 43.9 | 27.8 | 14.2 | 63.1 | 30.0 |
| Technical staff | 2.6 | 1.1 | 2.1 | 0.5 | - | 0.3 | 0.4 | - | 0.3 |
| Other Staff | 11.6 | 13.2 | 12.2 | 12.3 | 6.7 | 10.1 | 18.7 | 8.5 | 15.3 |
| Voluntary Staff | 69.4 | 37.9 | 56.9 | 70.3 | 49.4 | 61.8 | 66.7 | 28.4 | 54.4 |
| Total | 100.0 | 100.0 | 100.0 | 100.0 | 100.0 | 100.0 | 100.0 | 100.0 | 100.0 |

Table 15. Percentage distribution of total personnel employed with local councils by gender

| Employment structure | 2002 | | | 2003 | | | 2004 | | |
|----------------------|-------------|-------------|--------------|-------------|-------------|--------------|-------------|-------------|--------------|
| | Males | Females | Total | Males | Females | Total | Males | Females | Total |
| | % | | | | | | | | |
| Administrative staff | 34.3 | 65.7 | 100.0 | 36.2 | 63.8 | 100.0 | 32.1 | 67.9 | 100.0 |
| Technical staff | 78.6 | 21.4 | 100.0 | 100.0 | - | 100.0 | 100.0 | - | 100.0 |
| Other Staff | 57.1 | 42.9 | 100.0 | 72.7 | 27.3 | 100.0 | 82.2 | 17.8 | 100.0 |
| Voluntary Staff | 73.7 | 26.3 | 100.0 | 67.7 | 32.3 | 100.0 | 83.1 | 16.9 | 100.0 |
| Total | 60.4 | 39.6 | 100.0 | 59.5 | 40.5 | 100.0 | 67.7 | 32.3 | 100.0 |

Methodological notes

1. This survey on local councils was conducted exhaustively, i.e. aimed at 100 per cent coverage. All local councils in Malta and Gozo were surveyed - 68 in total.
2. The global response rate for this survey stood at 63 local councils, or 92.7 per cent of the total.
3. Missing data was imputed by re-contacting all the respondents. In the cases where the respondent was no longer reachable, the data were imputed by the application of valid mathematical algorithms.
4. The data in this release should be considered as final and is not subject to further revision.