

News Release



Date: 20 June 2006
No. : 136/2006
Time of release: 11.00 hrs

Business

Interim Labour Cost Index: January-March 2006

This release provides labour cost indices in respect of the period from January-March 2004 to January-March 2006. Table 1 provides data for the Main Industrial Groupings and Table 2, for Total Industry. Table 3 numerically describes the selected industrial sectors in more detail. The base year for all the indices is the average for the whole year 2000 (2000=100). This series is not seasonally adjusted.

The labour cost index for Total Industry increased by 7.7 per cent from 114.4 in the first quarter 2005 to 123.2 for the same period in 2006.

In the period under review, labour costs in the Capital Goods sectors registered an increase of 0.9 per cent to 114.8 from 113.8 in the previous year.

The labour cost index in respect of the Consumer Durables sectors increased by 27.3 per cent from 119.2 for the first quarter of 2005 to 151.7 in 2006. In the same period, the labour cost index in the Consumer Non-Durables sectors increased by 8.4 per cent to 132.0 in 2006 from 121.8 in 2005.

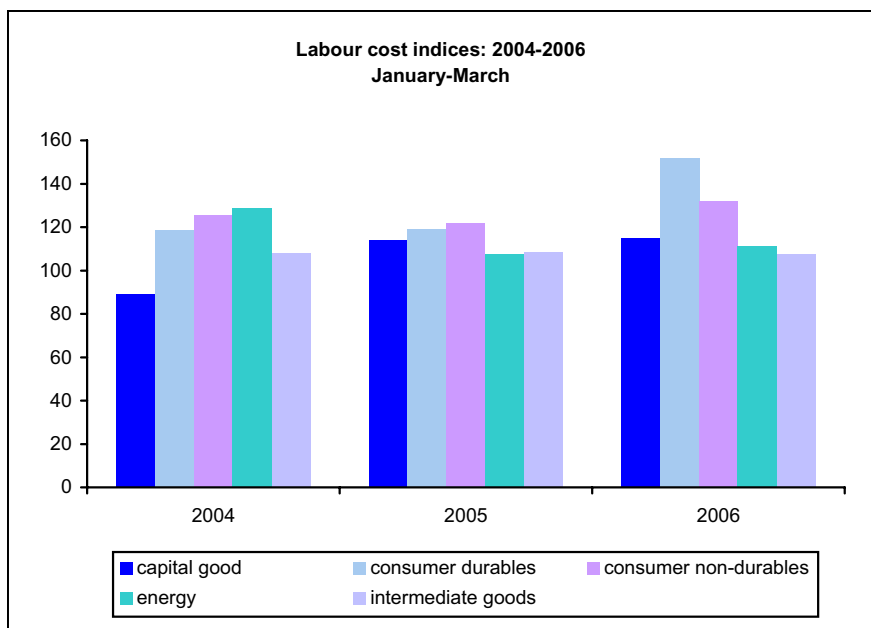
During the January-March 2006 quarter, labour costs in the Energy Group increased by 3.1 per cent to 111.2 from 107.8 for the first quarter a year earlier.

At 107.8, the labour cost index for the Intermediate Goods sectors in the first quarter this year registered a decrease of 0.7 per cent from 108.6 in 2005 ■

Theme:
Industry and Services

Compiled by:

Business Statistics Unit
e-mail: stbs.nso@gov.mt
Tel: 25997339



The monthly calendar of NSO News Releases may be consulted on the Office's website at www.nso.gov.mt

National Statistics Office
Library & Information Unit
Lascaris, Valletta CMR 02, Malta
Tel: (+356) 25997219
Fax: (+356) 25997205
e-mail: nso@gov.mt
<http://www.nso.gov.mt>

Kindly indicate source when quoting from this release

Table 1. Indices by Main Industrial Groupings (MIGs)

Main Industrial Groupings	Year	Q1	Q2	Q3	Q4	Annual (Q1) %change
Capital Goods	2004	89.0	90.8	106.5	80.2	
	2005	113.8	110.4	124.8	122.6	27.9
	2006	114.8				0.9
Consumer Durables	2004	118.5	115.1	136.4	122.1	
	2005	119.2	114.5	125.3	130.7	0.6
	2006	151.7				27.3
Consumer Non-Durables	2004	125.8	118.8	118.9	126.6	
	2005	121.8	121.0	124.3	133.1	-3.2
	2006	132.0				8.4
Energy	2004	129.0	109.1	116.9	101.8	
	2005	107.8	112.1	129.4	113.5	-16.4
	2006	111.2				3.1
Intermediate Goods	2004	108.1	101.7	106.3	105.1	
	2005	108.6	104.7	107.8	106.5	0.4
	2006	107.8				-0.7

Table 2. Indices by Total Industry

Year	Q1	Q2	Q3	Q4	Annual (Q1) %change
2004	114.1	107.8	113.8	107.0	
2005	114.4	113.5	119.1	122.2	0.2
2006	123.2				7.7

Table 3. Indices by Industrial Sectors ...

NACE	Year	Q1	Q2	Q3	Q4	Annual (Q1) %change
14-Quarrying	2004	113.6	120.9	120.5	132.5	
	2005	128.8	135.0	127.1	124.4	13.4
	2006	113.2				-12.1
15-Food and beverages	2004	120.7	115.7	117.2	120.4	
	2005	120.6	123.8	118.2	118.5	-0.1
	2006	120.7				0.0
16-Manufacture of tobacco products	2004	125.3	118.3	121.0	116.9	
	2005	124.2	112.1	123.6	114.8	-0.9
	2006	128.1				3.1
17-Manufacture of textiles and textile products	2004	97.7	92.6	103.4	101.3	
	2005	101.5	106.4	108.2	89.8	4.0
	2006	77.6				-23.5
18-Manufacture of wearing apparel and clothes	2004	124.3	109.8	114.1	137.4	
	2005	119.2	108.4	118.6	124.0	-4.1
	2006	135.0				13.3
19-Manufacture of leather and leather products	2004	103.8	102.4	104.5	109.4	
	2005	98.8	105.7	118.9	109.4	-4.8
	2006	95.8				-3.0
21-Manufacture of paper and paper products	2004	83.8	79.2	104.5	107.0	
	2005	99.2	97.8	109.4	109.5	18.4
	2006	107.9				8.8
22 - Publishing and printing	2004	119.7	122.3	118.2	129.6	
	2005	122.3	122.9	139.2	133.9	2.2
	2006	135.4				10.7
24-Manufacture of chemicals and chemical products	2004	109.9	99.8	113.2	105.1	
	2005	104.5	101.9	109.1	119.5	-4.9
	2006	111.6				6.8
25-Manufacture of rubber and plastic products	2004	104.4	92.6	97.1	94.2	
	2005	105.8	95.2	101.0	97.8	1.4
	2006	102.8				-2.9
26-Manufacture of other non-metallic mineral products	2004	114.9	123.9	124.3	128.9	
	2005	118.8	124.6	125.1	121.9	3.4
	2006	127.4				7.2
28-Manufacture of fabricated metal products	2004	123.2	132.9	117.8	127.5	
	2005	166.0	139.0	152.8	152.2	34.8
	2006	169.4				2.0

... Table 3. Indices by Industrial Sectors

NACE	Year	Q1	Q2	Q3	Q4	Annual (Q1) %change
29-Manufacture of machinery and equipment n.e.c.	2004	110.6	103.5	106.0	108.5	
	2005	124.8	99.0	105.2	104.6	12.9
	2006	92.8				-25.7
31-Manufacture of electrical machinery and apparatus	2004	101.4	89.2	95.5	88.4	
	2005	95.5	96.7	96.9	92.5	-5.9
	2006	100.2				5.0
32-Manufacture of radio, TV, communication equipment, etc.	2004	106.4	101.3	112.5	107.5	
	2005	106.7	106.0	108.9	105.6	0.2
	2006	106.1				-0.5
33-Manufacture of medical, precision and optical instruments, etc.	2004	106.8	101.3	107.2	108.2	
	2005	105.5	101.5	96.9	108.6	-1.2
	2006	111.6				5.9
34-Manufacture of motor vehicles, trailers and semi-trailers	2004	125.6	121.3	117.5	128.0	
	2005	130.7	132.5	138.6	136.3	4.1
	2006	134.3				2.7
35-Manufacture of other transport equipment	2004	97.4	95.4	123.0	74.0	
	2005	143.0	143.5	183.5	170.7	46.9
	2006	151.5				5.9
36-Manufacture of furniture and other manufacture N.E.C.	2004	140.8	135.3	139.3	136.1	
	2005	150.9	139.7	146.3	165.6	7.2
	2006	190.2				26.1
37 - Recycling	2004	135.2	137.6	127.4	278.2	
	2005	133.8	128.3	143.0	100.7	-1.1
	2006	82.8				-38.1
40-Electrical energy, gas steam and hot water	2004	148.3	108.3	111.5	90.3	
	2005	154.2	115.1	99.7	118.0	4.0
	2006	118.8				-23.0
41-Collection, purification and distribution of water	2004	109.1	112.2	127.1	108.8	
	2005	112.4	111.6	138.9	108.5	3.0
	2006	106.2				-5.5

KEY TO NACE CLASSIFICATION

- 14 - Quarrying
- 15 - Food and beverages
- 16 - Manufacture of tobacco products
- 17 - Manufacture of textiles and textile products
- 18 - Manufacture of wearing apparel and clothes
- 19 - Manufacture of leather and leather products
- 21 - Manufacture of paper and paper products
- 22 - Publishing and printing
- 24 - Manufacture of chemicals and chemical products
- 25 - Manufacture of rubber and plastic products
- 26 - Manufacture of other non-metallic mineral products
- 28 - Manufacture of fabricated metal products
- 29 - Manufacture of machinery and equipment n.e.c.
- 31 - Manufacture of electrical machinery and apparatus
- 32 - Manufacture of radio, TV, communication equipment, etc.
- 33 - Manufacture of medical, precision and optical instruments, etc.
- 34 - Manufacture of motor vehicles, trailers and semi-trailers
- 35 - Manufacture of other transport equipment
- 36 - Manufacture of furniture and other manufacture n.e.c.
- 37 - Recycling
- 40 - Electrical energy, gas steam and hot water
- 41 - Collection, purification and distribution of water

METHODOLOGICAL NOTES

Labour cost indices show the short-term development of the cost for employers of employing the labour force on an hourly basis. The index covers quarrying, manufacturing and energy economic activities. Labour costs include gross wages and salaries and employers' social security contributions connected to employment

OBJECTIVES

The aim of the short-term statistics is to provide users with information on the business cycle.

DATA COLLECTION AND INDEX COMPILATION

Data have been collected by means of a statistical sample survey. For each NACE division (for example NACE Division 14 for quarrying), a sample was selected. The selected enterprises were requested to provide information on a monthly basis, including employment, wages and salaries, and employers' NI contributions. On the basis of the information provided, indices have been calculated for each Division, showing the level of the specified variable (for example, employment), relative to the average level throughout the base year 2000, in the case of the data presented here. Note that the data presented have not been seasonally adjusted.

MAIN INDUSTRIAL GROUPINGS

The objective of MIGs (Main Industrial Groupings) is to provide an activity breakdown of industry (Sections C to E of NACE) which is an intermediate level between the sections and sub-sections of this classification. The need for an intermediate level comes from the fact that the three sections provide only a limited amount of detail.

There are 5 MIGS. These regroup all of the activities pertaining to Sections C to E and cover economic activities related to quarrying, manufacturing sectors and the water & energy sectors. These are:

- Capital Goods;
- Consumer Durables;
- Consumer Non-Durables;
- Energy;
- Intermediate Goods.

STATUS OF THE DATA

The data contained in this release should be considered as current and thereby subject to revision. Each release may include revisions of the past monthly data in respect of a rolling two year period.

SUMMARY DEFINITIONS OF KEY VARIABLES:

Employment: This covers all persons employed, regardless of whether they are part-time or full-time, and includes paid employees as well as working proprietors and unpaid family workers.

Wages & Salaries: covers wages and salaries including bonuses, weekly allowances (cost of living allowances), overtime and national social security contributions by the employee.

Employers NI contributions: National Social Security contributions by the employer.