

News Release



Date: 21 June 2006
No. : 137/2006
Time of release: 11.00 hrs

Theme:
Industry and Services

Compiled by:
Tourism Statistics Unit
e-mail: tourism.nso@gov.mt
Tel: 25997329

The monthly calendar of NSO News Releases may be consulted on the Office's website at www.nso.gov.mt

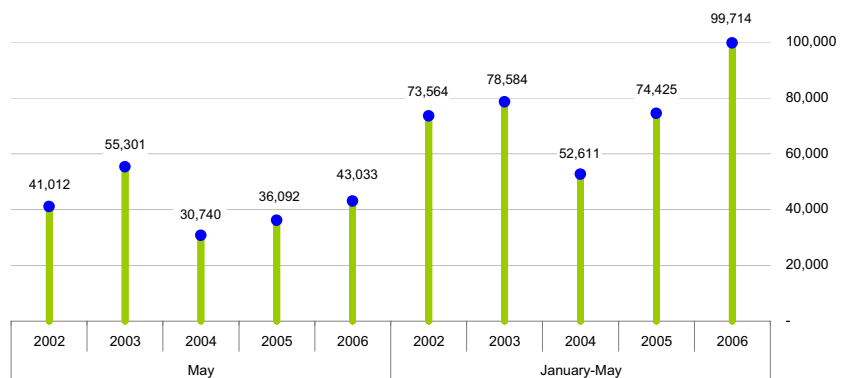
Tourism

Cruise passengers: May 2006

May 2006

In May 2006, the number of cruise passengers arriving in Malta went up by 6,941, an increase of 19.2 per cent over the corresponding month a year ago, to a total of 43,033.

Chart 1. Graphical Overview
Cruise passengers, total



When compared to May last year, the major increases in cruise passengers were recorded in the British, the Spanish and the French markets, by 2,936, 2,503 and 2,300 passengers respectively.

On the other hand, cruise passengers arriving from the US decreased by 1,091, to a total of 3,902.

January-May 2006

During the first five months of the year, the number of cruise passengers who visited Malta went up by 34.0 per cent, to 99,714, an increase of 25,289 same-day visitors over the corresponding period in 2005. The major markets for cruise passengers were the German (27,623), the Italian (18,450), the Spanish (12,632), and the French (12,159). Further illustrations can be looked up on Page 3.

During the period under review, male cruise passengers slightly exceeded female ones, the former accounting for 50.3 per cent of the total – see Chart 2.

The greatest proportion of cruise passengers - 35.4 per cent - were aged 60-79 years, trailed by passengers aged 40-59 and 20-39 years, at 34.3 and 17.4 per cent respectively. For further analysis refer to Page 4 ■

National Statistics Office
Library & Information Unit
Lascaris, Valletta CMR 02, Malta
Tel: (+356) 25997219
Fax: (+356) 25997205
e-mail: nso@gov.mt
<http://www.nso.gov.mt>

Table 1. Cruise passengers arriving in Malta: May 2006

Country	Number of passengers				Sex		
	Landed	Embarked	Transit	Total	Male	Female	Total
Austria	2	-	1,234	1,236	538	698	1,236
Belgium	-	-	337	337	150	187	337
Canada	-	3	819	822	361	461	822
Denmark	-	-	27	27	11	16	27
France	-	-	7,652	7,652	3,607	4,045	7,652
Germany	4	7	8,237	8,248	3,933	4,315	8,248
Greece	-	-	11	11	6	5	11
Ireland (Republic of)	-	-	77	77	32	45	77
Italy	26	2	8,402	8,430	4,759	3,671	8,430
Malta	144	-	1	145	72	73	145
Netherlands	-	-	187	187	89	98	187
Norway	-	-	26	26	14	12	26
Russia	-	-	73	73	45	28	73
Spain	-	-	4,967	4,967	2,337	2,630	4,967
Sweden	-	-	40	40	18	22	40
Switzerland	-	-	609	609	272	337	609
Turkey	-	-	5	5	5	-	5
UK	6	3	4,704	4,713	2,221	2,492	4,713
US	37	54	3,811	3,902	1,782	2,120	3,902
Yugoslavia	-	-	4	4	-	4	4
Other	7	-	1,515	1,522	745	777	1,522
Total	226	69	42,738	43,033	20,997	22,036	43,033

Chart 2. January-May 2002-2006

Total cruise passengers, by sex

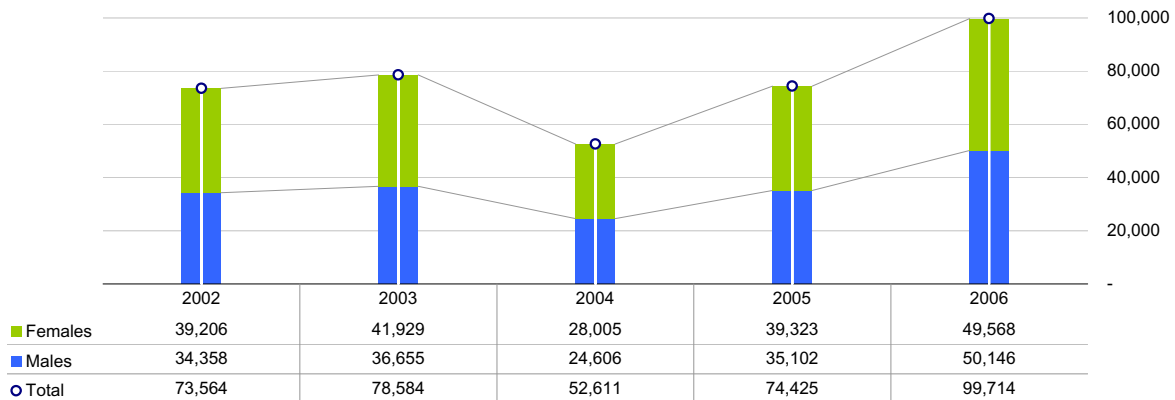


Table 2. Cruise passengers arriving in Malta classified by country of origin

Country	May			January-May		
	2005	2006	Annual change	2005	2006	Annual change
Austria	471	1,236	765	2,022	2,549	527
Belgium	147	337	190	461	708	247
Canada	1,017	822	-195	1,276	1,617	341
Denmark	92	27	-65	173	189	16
France	5,352	7,652	2,300	9,757	12,159	2,402
Germany	7,065	8,248	1,183	17,096	27,623	10,527
Greece	6	11	5	14	30	16
Ireland (Republic of)	25	77	52	80	144	64
Italy	7,545	8,430	885	16,600	18,450	1,850
Malta	391	145	-246	393	310	-83
Netherlands	242	187	-55	418	423	5
Norway	46	26	-20	74	517	443
Russia	34	73	39	59	132	73
Spain	2,464	4,967	2,503	7,015	12,632	5,617
Sweden	14	40	26	38	165	127
Switzerland	660	609	-51	2,040	1,452	-588
Turkey	20	5	-15	26	57	31
UK	1,777	4,713	2,936	4,038	8,099	4,061
US	4,993	3,902	-1,091	7,918	8,651	733
Yugoslavia	-	4	4	4	18	14
Others	3,731	1,522	-2,209	4,923	3,789	-1,134
Total	36,092	43,033	6,941	74,425	99,714	25,289

Chart 3. January-May 2006

Cruise passengers - by country of origin

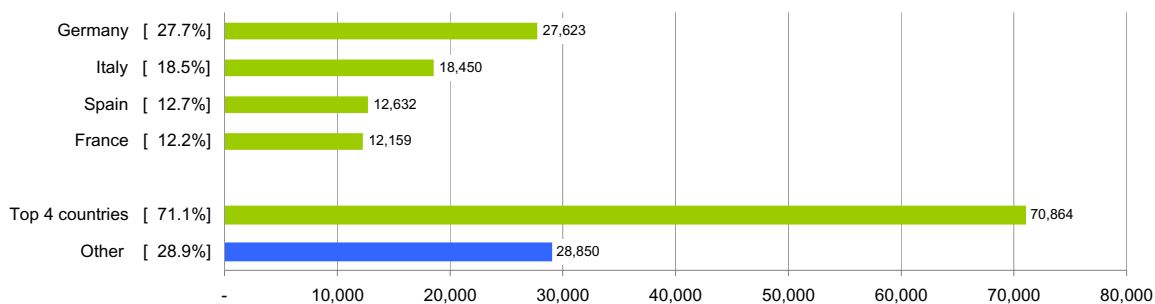


Chart 4. January-May 2005

Cruise passengers - by country of origin

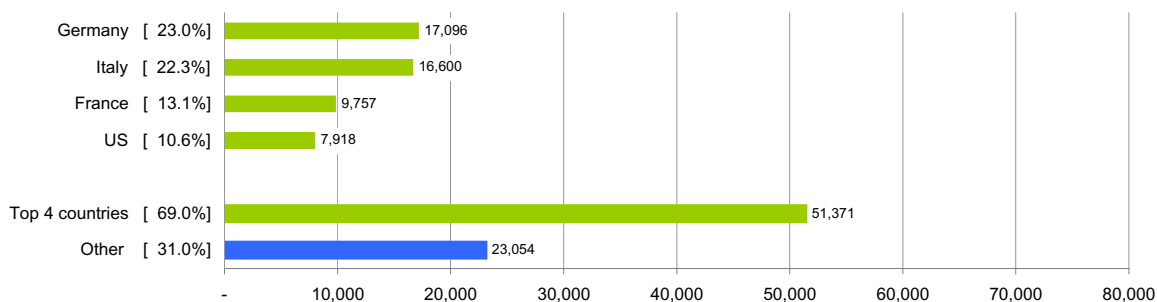


Table 3. Monthly cruise passengers arriving in Malta classified by age group: 2006

Month	Age group												Total
	0-4	5-9	10-19	20-29	30-39	40-49	50-59	60-69	70-79	80-89	90-99	100+	
January	81	159	312	151	469	683	894	1,341	1,191	255	15	-	5,551
February	50	106	199	316	594	852	1,327	1,680	658	85	21	-	5,888
March	66	58	420	632	993	1,293	1,788	1,874	790	109	37	-	8,060
April	491	1,422	3,967	2,488	3,968	6,046	6,388	7,432	3,934	847	199	-	37,182
May	550	695	1,627	3,267	4,445	6,479	8,496	10,218	6,086	1,006	164	-	43,033
Total	1,238	2,440	6,525	6,854	10,469	15,353	18,893	22,545	12,659	2,302	436	-	99,714

Chart 5. January-May 2006
Cruise passengers - by age group

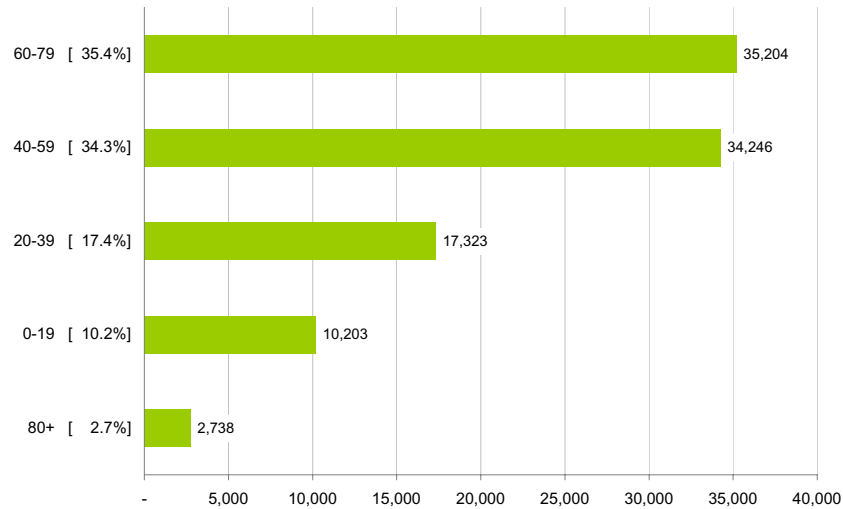


Chart 6. January-May 2005
Cruise passengers - by age group

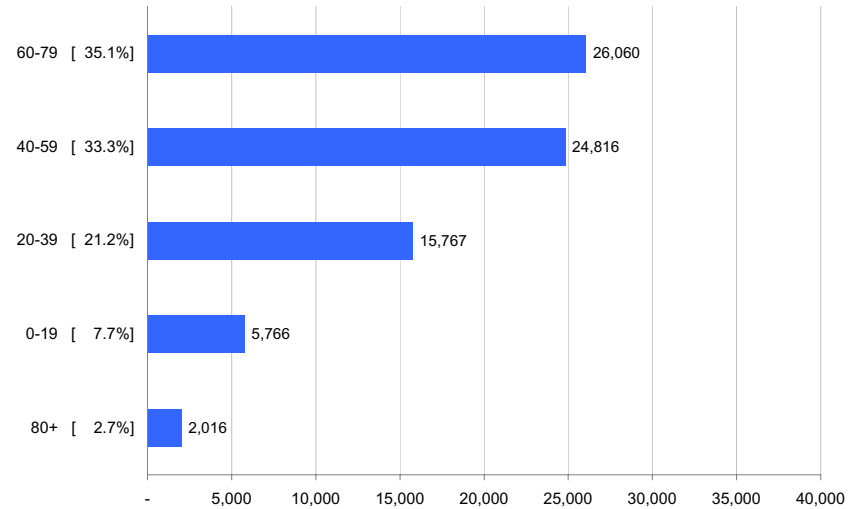


Chart 7. Monthly cruise liner calls: 2002-2006

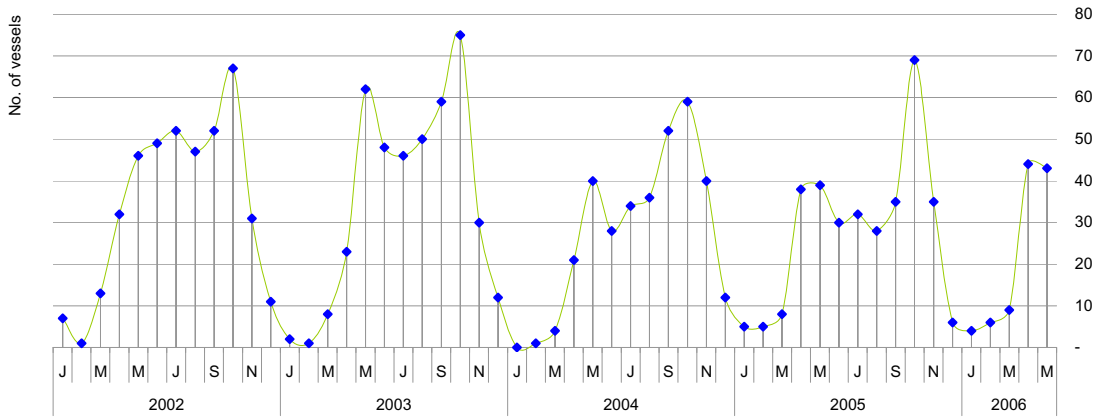
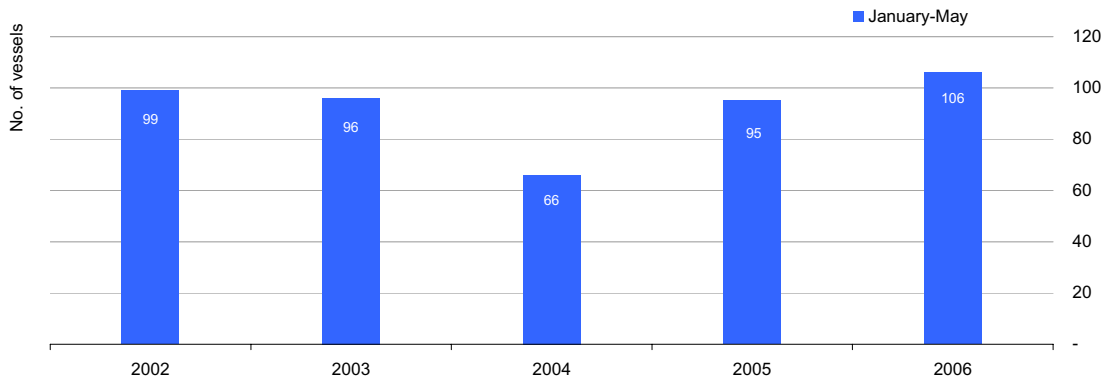


Table 4. Monthly cruise liner calls: 2002-2006

Month	2002	2003	2004	2005	2006
January	7	2	-	5	4
February	1	1	1	5	6
March	13	8	4	8	9
April	32	23	21	38	44
May	46	62	40	39	43
June	49	48	28	30	
July	52	46	34	32	
August	47	50	36	28	
September	52	59	52	35	
October	67	75	59	69	
November	31	30	40	35	
December	11	12	12	6	

Chart 8. Cruise liner calls: 2002-2006



Methodological Notes

1. The data in this release are compiled on the basis of administrative records held by the Malta Maritime Authority.
2. Data should be considered as final and are not normally subject to further revisions.

Definitions:

- Landed passengers cover all cruise passengers who arrive in Malta on a cruise ship and leave Malta by other means of transport or stay in Malta.
- Embarked passengers cover all cruise passengers who are either Maltese and leave Malta on a cruise ship, or alternatively, are foreigners who come to Malta by other means of transport and leave Malta on a cruise ship.
- Transit passengers cover all cruise passengers who arrive in Malta on a cruise ship and leave Malta by the same cruise ship.