

News Release



Date: 10 April 2006
No. : 72/2006
Time of release: 11.00 hrs

Theme:
Agriculture and Fisheries

Compiled by:
Agriculture & Fisheries Unit
e-mail: agric.nso@gov.mt
Tel: 25997529

The monthly calendar of NSO News Releases may be consulted on the Office's website at www.nso.gov.mt

Agriculture

Cattle Population - December 2005

The number of bovines as at 1st December 2005 stood at 19,742 heads, a marginal increase of 334 heads (+1.7 per cent) over the corresponding period, a year earlier. A total of 323 cattle breeders were found to be engaged in cattle rearing.

Comparing the categories with the same period a year earlier, there was an increase of 2.9 per cent in the category '*Cattle less than one year old*', a decrease of 2.4 per cent in the category '*between one and two years of age*' and an increase of 3.5 per cent in the '*Cattle over two years*'. The number of cows remained practically unchanged with 7,832 cows in 2005, of which 7,675 cows or 98.0 per cent were primarily used for the production of milk.

There were a total of 148 holdings which had dairy cows and other cattle on the holding. The total amount of cattle on these holdings stood at 17,839 heads or 90.4 per cent of all cattle. The remaining 175 holdings, which are engaged in the rearing of cattle for beef production, had a total of 1,903 cattle or 9.6 per cent of the total cattle stock. While a total of 44.0 per cent of the holdings had between 3 and 29 heads on the holding, there were 77 holdings with a total of 14,143 cattle. These holdings are considered large holdings with more than 100 heads on the farm.

On a regional level, 13,758 cattle (69.7 per cent) were found on Maltese farms, of which 5,369 heads (39.0 per cent) were found in the South Eastern district. The remaining 5,984 heads (30.3 per cent) were found on farms in Gozo and Comino. When compared to December 2004, while the cattle population in Malta increased from 13,393 heads to 13,758 heads (+2.7 per cent), in Gozo, the number of heads decreased from 6,015 to 5,984 (-0.5 per cent).

When comparing herd structures on a regional level, Gozitan farms have relatively larger herds. While in Malta 20.1 per cent of the farms have herds with more than 100 heads, in Gozo, 41.8 per cent of holdings have more than 100 heads on their farms.

Even though the majority of the farms, with a total of 1,903 cattle, are intended for beef production, the large part of all cattle are found on dairy farms. Dairy farms in Gozo and Comino are relatively larger than dairy farms in Malta. Whilst the average dairy farm in Malta has 112.5 heads on the holding, with an average of 49.7 dairy cows, Gozitan farms, on the other hand, have an average of 140.6 heads per dairy farm with an average of 57.2 dairy cows per dairy farm ■

National Statistics Office
Library & Information Unit
Lascaris, Valletta CMR 02, Malta
Tel: (+356) 25997219
Fax: (+356) 25997205
e-mail: nso@gov.mt
<http://www.nso.gov.mt>

Table 1. Distribution of cattle population by age and sex

Administrative area*	Grand total	Cattle less than 1 year			Cattle between 1 and 2 years					Cattle greater than 2 years				
		Total cattle less than 1 year	of which:		Total cattle between 1 and 2 years	of which:				Total cattle greater than 2 years	of which:			
			Males	Females		Males	Females not yet mated	Heifers for slaughter	Other heifers		Males	Heifers for slaughter	Other heifers	Cows
MALTA	19,742	5,625	2,733	2,892	5,245	2,260	1,192	201	1,592	8,872	552	72	416	7,832
Malta	13,758	3,916	1,915	2,001	3,621	1,607	804	134	1,076	6,221	465	52	286	5,418
Gozo and Comino	5,984	1,709	818	891	1,624	653	388	67	516	2,651	87	20	130	2,414
Southern Harbour	1,989	587	292	295	522	227	119	19	157	880	84	7	40	749
Northern Harbour	1,941	538	214	324	465	187	110	18	150	938	50	8	43	837
South Eastern	5,369	1,574	782	792	1,477	711	306	52	408	2,318	207	18	102	1,991
Western	2,561	744	446	298	670	309	143	24	194	1,147	89	9	55	994
Northern	1,898	473	181	292	487	173	126	21	167	938	35	10	46	847
Gozo and Comino	5,984	1,709	818	891	1,624	653	388	67	516	2,651	87	20	130	2,414

* see methodological notes

Chart 1. Distribution of cattle population by age and district

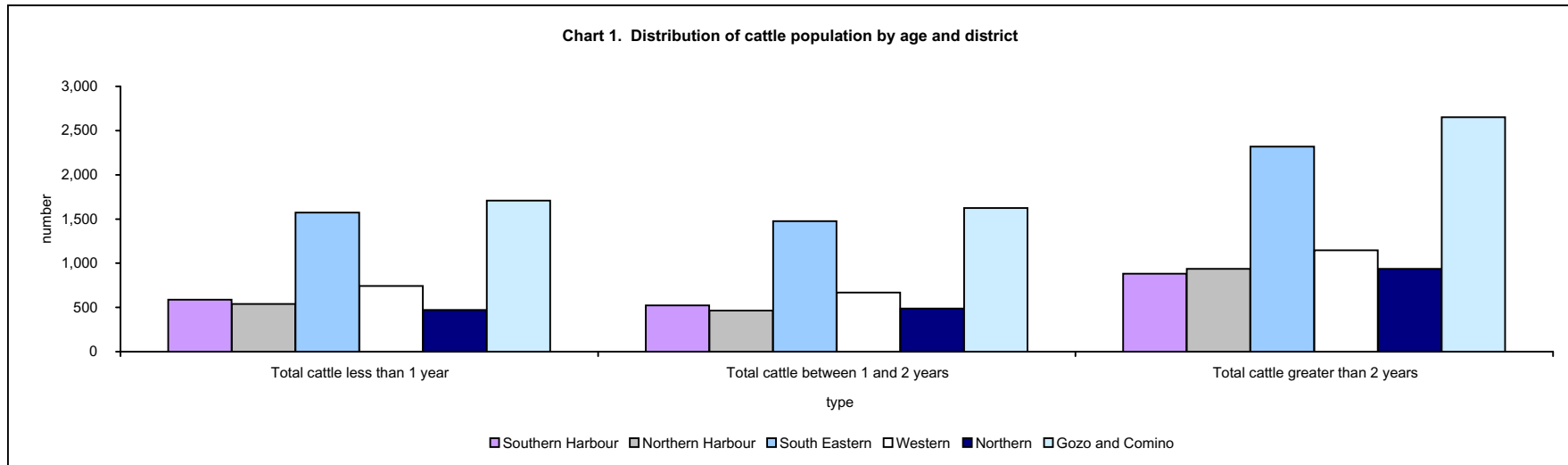


Table 2. Distribution of cattle farms and heads by herd size

Administrative area*	Number of cattle					
	Total	1-2	3-29	30-49	50-99	>=100
MALTA						
<i>Farms</i>	323	35	142	28	41	77
<i>Number of cattle</i>	19,742	52	1,395	1,049	3,103	14,143
Malta						
<i>Farms</i>	268	31	130	25	28	54
<i>Number of cattle</i>	13,758	46	1,291	923	2,103	9,395
Gozo and Comino						
<i>Farms</i>	55	4	12	3	13	23
<i>Number of cattle</i>	5,984	6	104	126	1,000	4,748

* see methodological notes

Table 3. Distribution of dairy farms and dairy cows by size class of dairy cows

Administrative area*	Number of dairy cows					
	Total	1-2	3-29	30-49	50-99	>=100
MALTA						
<i>Farms</i>	148	4	40	40	46	18
<i>Number of dairy cows</i>	7,675	7	640	1,520	3,103	2,405
Malta						
<i>Farms</i>	106	3	30	26	35	12
<i>Number of dairy cows</i>	5,273	5	434	993	2,302	1,539
Gozo and Comino						
<i>Farms</i>	42	1	10	14	11	6
<i>Number of dairy cows</i>	2,402	2	206	527	801	866

* see methodological notes

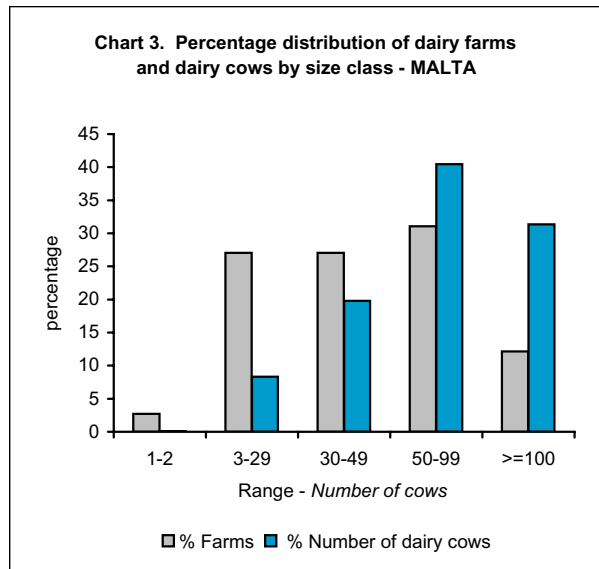
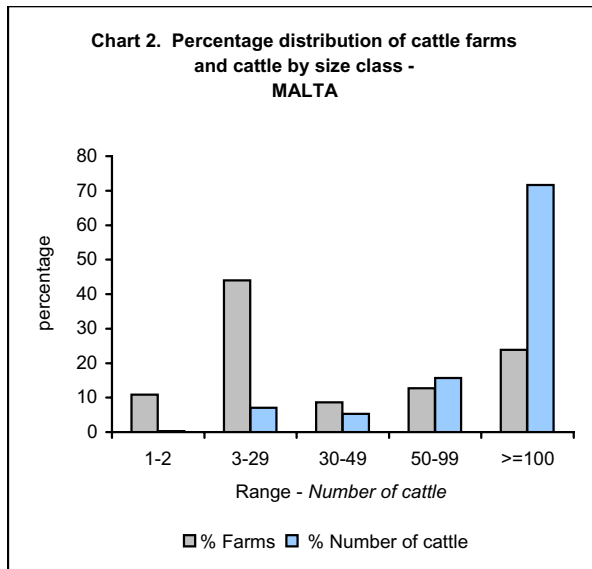


Table 4. Distribution of farms and cattle by type of farm

Administrative area*	Total number of cattle farms	of which:		Total number of heads	of which:		
		dairy farms	other farms		dairy cows	other cattle on dairy farms	cattle on non-dairy farms
MALTA	323	148	175	19,742	7,675	10,164	1,903
Malta	268	106	162	13,758	5,273	6,658	1,827
Gozo and Comino	55	42	13	5,984	2,402	3,506	76
Southern Harbour	30	15	15	1,989	737	1,036	216
Northern Harbour	40	18	22	1,941	827	978	136
South Eastern	114	39	75	5,369	1,898	2,512	959
Western	55	18	37	2,561	969	1,136	456
Northern	29	16	13	1,898	842	996	60
Gozo and Comino	55	42	13	5,984	2,402	3,506	76

* see methodological notes

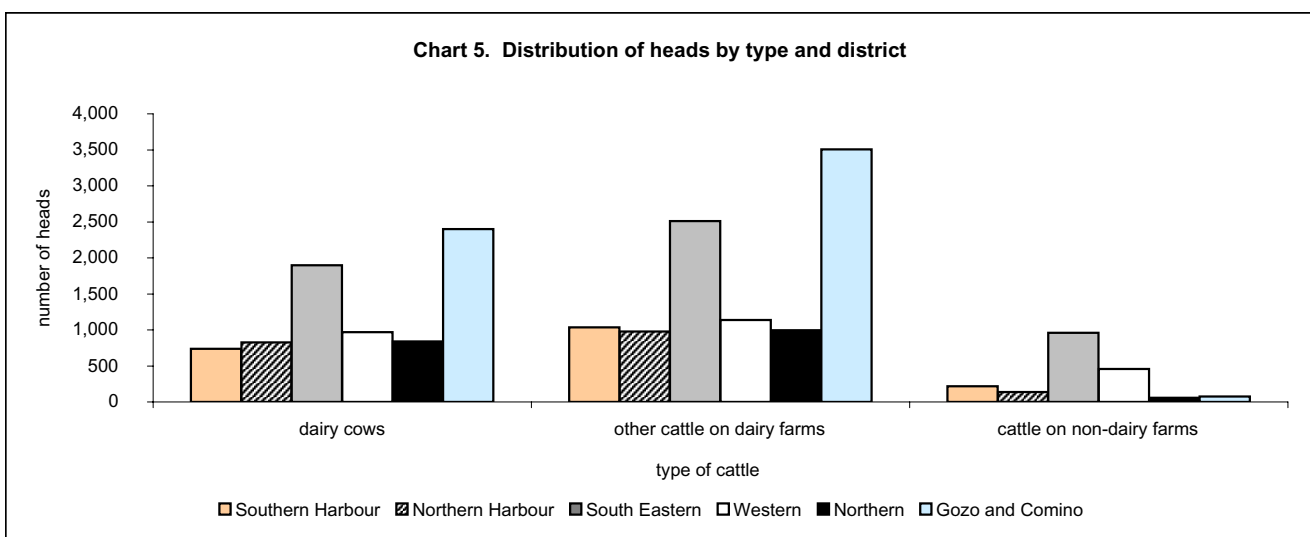
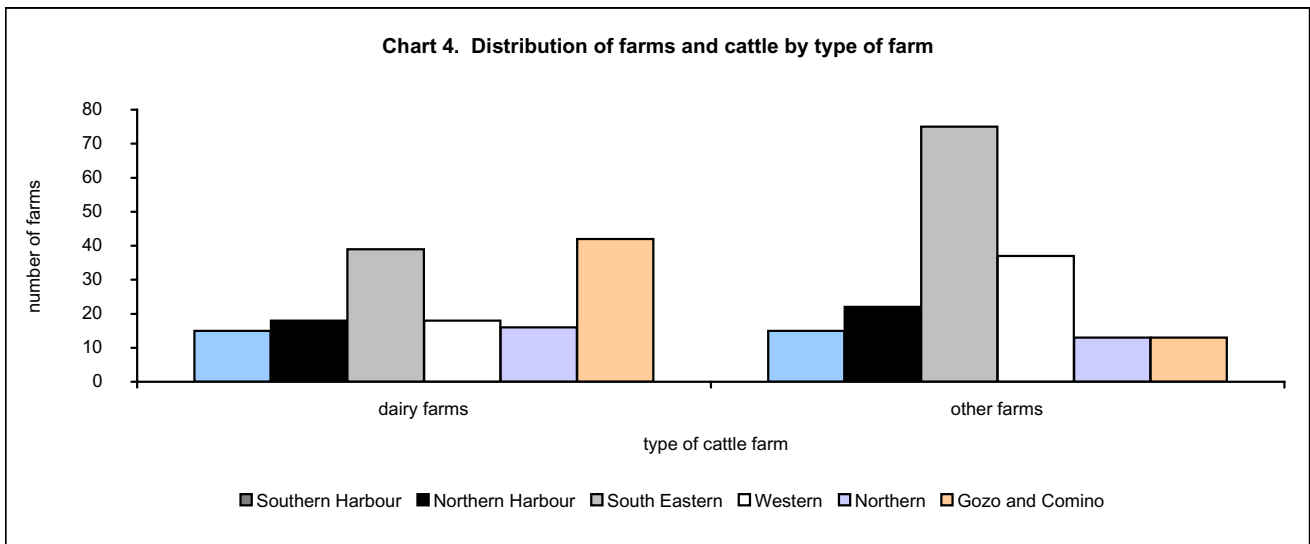


Table 5. Distribution of bovine population by age and administrative area: 2002-2005

Year	Bovines less than 1 year			Bovines between 1 and 2 years			Bovines greater than 2 years (excluding cows)			Cows			Total bovine population		
	MALTA	Malta	Gozo & Comino	MALTA	Malta	Gozo & Comino	MALTA	Malta	Gozo & Comino	MALTA	Malta	Gozo & Comino	MALTA	Malta	Gozo & Comino
2002	4,998	3,466	1,532	4,989	3,516	1,473	750	492	258	8,033	5,572	2,461	18,770	13,046	5,724
2003	4,909	3,329	1,580	4,938	3,369	1,569	486	307	179	7,607	5,173	2,434	17,940	12,178	5,762
2004	5,467	3,741	1,726	5,372	3,753	1,619	734	512	222	7,835	5,387	2,448	19,408	13,393	6,015
2005	5,625	3,916	1,709	5,245	3,621	1,624	1,040	803	237	7,832	5,418	2,414	19,742	13,758	5,984
%03/02	-1.8%	-4.0%	3.1%	-1.0%	-4.2%	6.5%	-35.2%	-37.6%	-30.6%	-5.3%	-7.2%	-1.1%	-4.4%	-6.7%	0.7%
%04/03	11.4%	12.4%	9.2%	8.8%	11.4%	3.2%	51.0%	66.8%	24.0%	3.0%	4.1%	0.6%	8.2%	10.0%	4.4%
%05/04	2.9%	4.7%	-1.0%	-2.4%	-3.5%	0.3%	41.7%	56.8%	6.8%	0.0%	0.6%	-1.4%	1.7%	2.7%	-0.5%

* see methodological notes

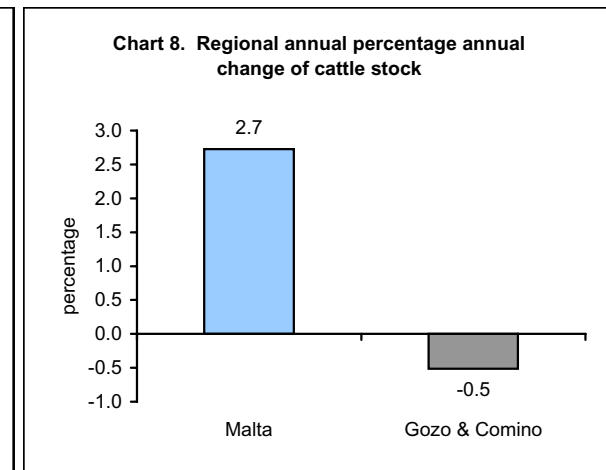
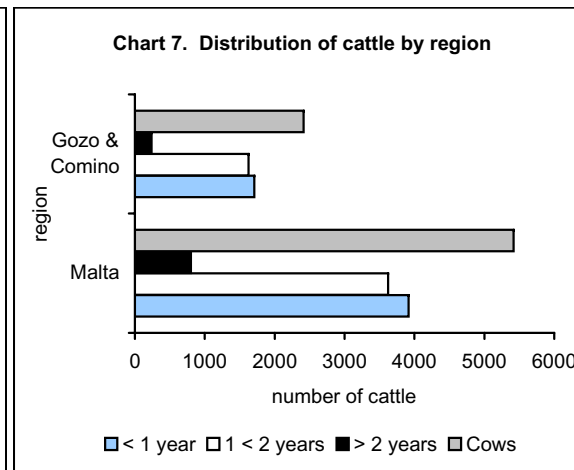
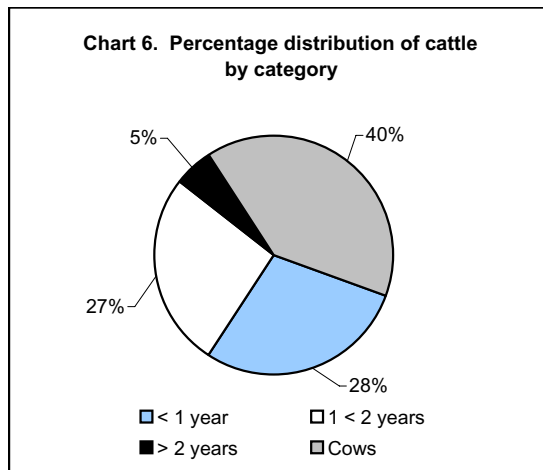


Table 6. Distribution of cattle population by category and administrative area: 2003-2005

Category	2003			2004			2005		
	Administrative area*								
	MALTA	Malta	Gozo & Comino	MALTA	Malta	Gozo & Comino	MALTA	Malta	Gozo & Comino
Cattle total	17,940	12,178	5,762	19,408	13,393	6,015	19,742	13,758	5,984
Bovines less than 1 year old	4,909	3,329	1,580	5,467	3,741	1,726	5,625	3,916	1,709
Calves for slaughter	-	-	-	-	-	-	-	-	-
Other calves	4,909	3,329	1,580	5,467	3,741	1,726	5,625	3,916	1,709
Male	2,383	1,634	749	2,635	1,835	800	2,733	1,915	818
Female	2,526	1,695	831	2,832	1,906	926	2,892	2,001	891
Bovines aged between 1 and 2 years	4,938	3,369	1,569	5,372	3,753	1,619	5,245	3,621	1,624
Male	1,586	1,039	547	1,940	1,364	576	2,260	1,607	653
Female	3,352	2,330	1,022	3,432	2,389	1,043	1,192	804	388
Female for slaughter	200	124	76	175	121	54	201	134	67
Other female	3,152	2,206	946	3,257	2,268	989	1,592	1,076	516
Bovines of 2 years and over	8,093	5,480	2,613	8,569	5,899	2,670	8,872	6,221	2,651
Male	95	64	31	238	184	54	552	465	87
Female	7,998	5,416	2,582	8,331	5,715	2,616	8,320	5,756	2,564
Heifers	391	243	148	496	328	168	488	338	150
Heifers for slaughter	66	44	22	47	28	19	72	52	20
Other heifers	325	199	126	449	300	149	416	286	130
Cows	7,607	5,173	2,434	7,835	5,387	2,448	7,832	5,418	2,414
Dairy cows	7,607	5,173	2,434	7,835	5,387	2,448	7,675	5,273	2,402
Other cows	-	-	-	-	-	-	157	145	12

* see methodological notes

Methodological Notes

1. The cattle survey is carried out every year and is in accordance to Council Directive 93/24/EEC of 1 June 1993 on the statistical surveys to be carried out on bovine animal production.
2. For the first time, data on the cattle survey has been entirely compiled with information from the bovine register, which is under the control of the FVRD at the civil abattoir.
3. Certain categories can not be directly compiled through the Bovine register and so specific co-efficients based on the last three annual surveys have been taken into consideration.
4. The data are published by the NSO and can be obtained directly from the NSO website <http://www.nso.gov.mt>

NUTS classification

The Nomenclature of Territorial Units for Statistics (NUTS) is a common classification that is used to provide a single uniform breakdown of territorial units for the production of regional statistics with regard to the European Union. It was adopted on 26 May 2003 by means of a Regulation¹ of the European Parliament and of the Council.

¹ (EC) No. 1059/2003

NUTS levels					
Administrative area	I (National)	II (National)	III (Regional)	IV (District)	V (Locality)
MALTA	x	x	x	x	x
Malta			x		
Gozo & Comino			x		
Southern Harbour				x	
Northern Harbour				x	
South Eastern				x	
Western				x	
Northern				x	
Gozo & Comino				x	

COMPOSITION OF DISTRICTS - NUTS level V

Southern Harbour: Valletta, Birgu, Isla, Bormla, Żabbar, Fgura, Floriana, Kalkara, Luqa, Marsa, Paola, Santa Luċġja, Tarxien, Xgħajra.

Northern Harbour: Qormi, B'Kara, Gżira, Hamrun, Msida, Pembroke, Pieta, San Ġiljan, San Ġwann, Santa Venera, Sliema, Swieqi, Ta' Xbiex.

South Eastern: Żejtun, B'Bugia, Gudja, Għaxaq, Kirkop, M'Scala, M'Xlokk, Mqabba, Qrendi, Safi, Żurrieq.

Western: Mdina, Żebbuġ, Siġġiewi, Attard, Balzan, Dingli, Iklin, Lija, Rabat, Mtarfa.

Northern: Għargħur, Mellieħa, Mġarr, Mosta, Naxxar, San Pawl il-Baħar.

Gozo and Comino: Rabat, Fontana, G'Sielem & Comino, Għarb, Għasri, Kerċem, Munxar, Nadur, Qala, San Lawrenz, Sannat, Xagħra, Xewkija, Żebbuġ.