

News Release



Date: 28 June 2007
No. : 110/2007
Time of release: 11.00 hrs

Tourism

Departing tourists: May 2007

Inbound tourists in May are estimated to have increased by 6.1 per cent when compared to the same month in 2006. Year-on-year, total nights spent decreased by 4.5 per cent.

May 2007

According to the ongoing frontier survey, tourist departures in May 2007 are estimated at 109,027, implying an increase of 6.1 per cent over the same month in 2006. The increase reflects primarily a rise in holiday makers, mainly from the British, Scandinavian and Italian markets, contrasted with a decline in tourists from the Netherlands, France and Austria.

On the other hand, total nights spent fell short by 4.5 per cent when compared to the same month in 2006. Year-on-year, total nights spent in private and collective accommodation decreased, by 12.4 and 2.0 per cent respectively. Overall, the average length of stay is calculated at 7.5 nights, shorter by 0.8 nights when compared to May 2006.

Theme:
Industry and Services

January-May 2007

Inbound tourists for the first five months of the year are estimated at 384,380 implying an increase of 6.0 per cent over the corresponding period a year ago. The growth was primarily attributable to an increase in holiday visits, mainly from the Scandinavian, Irish, Italian and British markets. Decreases were recorded in respect of the French, Dutch, Austrian and Belgian markets.

Table 6 shows that 87.0 per cent of all inbound visits comprised tourists coming from EU Member States. Although there was an increase in repeat tourism the data show that the overall increase was primarily characterised by a rise in first-time visits, the latter estimated to account for 65.8 per cent of the total. The largest age bracket comprised tourists aged between 45 and 64, albeit the overall increase is attributable to tourists aged 24 years and under.

Total nights spent decreased by 1.9 per cent when compared to the same period in 2006, implying shorter stays. Year-on-year, nights spent in private accommodation went down by 6.8 per cent, whilst those in collective accommodation decreased by 0.4 per cent. Tourist nights in rented accommodation and in lodgings with friends and relatives registered decreased, while those in owner-occupied accommodation remained almost unchanged. With regard to collective accommodation the decrease was category-specific - less nights in the 3-star category offset all increases recorded in the remaining collective accommodation establishments, mainly the 5-star category. The average length of stay is calculated at 8.4 nights, down by 0.6 nights when compared to last year's level.

During the period under review, total tourist expenditure is estimated at Lm130.6 million, an increase of 5.0 per cent over the same period in 2006. The increase was underpinned by higher non-package expenditure and other expenditure. Although the majority still opt for package travel, direct bookings and non-package stays are exhibiting an increasing trend.

The survey results indicate that the per capita total expenditure is estimated at Lm347, virtually unchanged when compared to the same period in the previous year ■

Compiled by:

Tourism Statistics Unit
e-mail: tourism.nso@gov.mt
Tel: 25997329

The monthly calendar of NSO News Releases may be consulted on the Office's website at www.nso.gov.mt

National Statistics Office
Library & Information Unit
Lascaris, Valletta CMR 02, Malta
Tel: (+356) 25997219
Fax: (+356) 25997205
e-mail: nso@gov.mt
<http://www.nso.gov.mt>

Table 1. Profile of departing tourists

	May			absolute change	percentage change
	2005	2006	2007	2007/2006	2007/2006
	Total	112,559	102,740	109,027	6,287
Mode of travel:					
Air	112,001	101,940	108,168	6,228	6.1
Sea	558	800	859	59	7.4
Sex:					
Males	55,209	51,787	55,674	3,887	7.5
Females	57,350	50,953	53,353	2,400	4.7
Age group:					
0-24	6,940	7,012	8,829	1,817	25.9
25-44	40,542	33,853	36,423	2,570	7.6
45-64	49,894	47,635	50,910	3,275	6.9
65+	15,183	14,240	12,865	-1,375	-9.7
Markets:					
EU	99,420	90,717	94,274	3,557	3.9
Euro area	50,994	44,804	43,889	-915	-2.0
Non-EU	13,139	12,023	14,753	2,730	22.7
Purpose of visit:					
Holiday	96,880	87,054	94,051	6,997	8.0
Business and professional	10,269	11,218	9,875	-1,343	-12.0
Other	5,410	4,468	5,101	633	14.2
Organisation of stay					
Package	76,167	70,073	60,018	-10,055	-14.3
Non-package	36,392	32,667	49,009	16,342	50.0
Frequency					
First-time tourists	79,756	69,500	74,009	4,509	6.5
Repeat tourists	32,803	33,240	35,018	1,778	5.3
less than once a year	26,289	25,338	26,679	1,341	5.3
more than twice a year	6,514	7,902	8,339	437	5.5
Duration of visit:					
1-3 nights	12,611	10,867	13,631	2,764	25.4
4-6 nights	12,708	14,043	18,657	4,614	32.9
7+ nights	87,240	77,830	76,739	-1,091	-1.4
Average length of stay (nights)	8.9	8.3	7.5	-0.8	-9.6

Table 2. Departing tourists, by type of accommodation

				persons	
	May			absolute change	percentage change
	2005	2006	2007	2007/2006	2007/2006
Total	112,559	102,740	109,027	6,287	6.1
Private accommodation	17,419	17,809	20,399	2,590	14.5
Collective accommodation	95,140	84,931	88,628	3,697	4.4
Hotels	85,542	77,361	81,373	4,012	5.2
Other collective accommodation *	9,598	7,570	7,255	-315	-4.2

Table 3. Total nights spent by departing tourists, by type of accommodation

				nights	
	May			absolute change	percentage change
	2005	2006	2007	2007/2006	2007/2006
Total	999,827	854,455	815,664	-38,791	-4.5
Private accommodation	277,187	207,471	181,688	-25,783	-12.4
Collective accommodation	722,640	646,984	633,976	-13,008	-2.0
Hotels	638,477	579,460	574,855	-4,605	-0.8
Other collective accommodation *	84,163	67,524	59,121	-8,403	-12.4

Table 4. Total expenditure by departing tourists, by expenditure categories

				Lm 000s	
	May			absolute change	percentage change
	2005	2006	2007	2007/2006	2007/2006
Total	38,929	37,082	36,418	-664	-1.8
Package	18,445	18,122	15,246	-2,876	-15.9
Non-package	7,700	6,925	7,639	714	10.3
Air/sea fares	4,685	4,086	4,829	743	18.2
Accommodation	3,015	2,839	2,810	-29	-1.0
Other expenditure	12,784	12,035	13,533	1,498	12.4

* Comprises apart-hotels, guesthouses, hostels and tourist villages
 Estimates for expenditure are rounded to the nearest thousand

Table 5. Departing tourists, nights spent and total expenditure, by country of residence

	May			absolute change	percentage change
	2005	2006	2007	2007/2006	2007/2006
Total tourists	112,559	102,740	109,027	6,287	6.1
Austria	3,617	4,074	2,856	-1,218	-29.9
Belgium	3,021	2,734	2,500	-234	-8.6
France	12,118	10,733	8,624	-2,109	-19.6
Germany	16,701	10,231	10,556	325	3.2
Ireland	1,266	1,264	2,547	1,283	101.5
Italy	5,735	6,477	8,449	1,972	30.4
Libya	829	780	727	-53	-6.8
Netherlands	5,872	6,671	4,104	-2,567	-38.5
Russia	794	1,312	1,527	215	16.4
Scandinavia*	6,824	7,355	9,556	2,201	29.9
Switzerland	2,156	2,346	2,273	-73	-3.1
United Kingdom	41,915	38,635	41,277	2,642	6.8
USA	2,226	1,637	3,121	1,484	90.7
Other	9,485	8,491	10,910	2,419	28.5
Total nights	999,827	854,455	815,664	-38,791	-4.5
Austria	21,706	28,690	16,452	-12,238	-42.7
Belgium	18,565	18,647	15,818	-2,829	-15.2
France	82,799	76,384	54,521	-21,863	-28.6
Germany	130,893	85,381	76,670	-8,711	-10.2
Ireland	8,840	8,995	16,605	7,610	84.6
Italy	39,627	35,017	43,008	7,991	22.8
Libya	5,087	7,857	4,724	-3,133	-39.9
Netherlands	45,419	45,912	30,183	-15,729	-34.3
Russia	15,111	17,787	12,931	-4,856	-27.3
Scandinavia*	49,232	63,185	67,123	3,938	6.2
Switzerland	20,348	20,157	18,376	-1,781	-8.8
United Kingdom	380,653	365,315	365,378	63	0.0
USA	13,545	14,843	18,997	4,154	28.0
Other	168,002	66,285	74,878	8,593	13.0
Total expenditure (Lm'000s)	38,929	37,082	36,418	-664	-1.8
Austria	1,100	1,334	880	-454	-34.0
Belgium	1,077	892	841	-51	-5.7
France	4,352	3,702	2,842	-860	-23.2
Germany	5,555	3,633	3,387	-246	-6.8
Ireland	516	470	807	337	71.7
Italy	1,837	1,869	2,262	393	21.0
Libya	247	286	297	11	3.8
Netherlands	1,885	2,225	1,418	-807	-36.3
Russia	298	625	633	8	1.3
Scandinavia*	2,365	2,899	3,158	259	8.9
Switzerland	832	999	877	-122	-12.2
United Kingdom	13,969	13,815	14,165	350	2.5
USA	1,077	848	1,144	296	34.9
Other	3,819	3,485	3,707	222	6.4

* Denmark, Finland, Norway and Sweden

Estimates for expenditure are rounded to the nearest thousand

Table 6. Profile of departing tourists

	January-May			absolute change	percentage change
	2005	2006	2007	2007/2006	2007/2006
	Total	369,632	362,688	384,380	21,692
Mode of travel:					
Air	366,574	360,439	380,571	20,132	5.6
Sea	3,058	2,249	3,809	1,560	69.4
Sex:					
Males	189,229	191,365	200,377	9,012	4.7
Females	180,403	171,323	184,003	12,680	7.4
Age group:					
0-24	29,007	27,334	40,432	13,098	47.9
25-44	125,832	117,905	121,508	3,603	3.1
45-64	159,807	169,132	174,760	5,628	3.3
65+	54,986	48,317	47,680	-637	-1.3
Markets:					
EU	322,931	317,314	334,482	17,168	5.4
Euro area	150,951	148,805	152,130	3,325	2.2
Non-EU	46,701	45,374	49,898	4,524	10.0
Purpose of visit:					
Holiday	312,893	298,068	322,579	24,511	8.2
Business and professional	37,876	46,434	38,776	-7,658	-16.5
Other	18,863	18,186	23,025	4,839	26.6
Organisation of stay					
Package	261,394	242,484	215,840	-26,644	-11.0
Non-package	108,238	120,204	168,540	48,336	40.2
Frequency					
First-time tourists	247,522	237,062	253,011	15,949	6.7
Repeat tourists	122,110	125,626	131,369	5,743	4.6
less than once a year	96,031	96,438	96,978	540	0.6
more than twice a year	26,079	29,188	34,391	5,203	17.8
Duration of visit:					
1-3 nights	42,857	47,579	48,530	951	2.0
4-6 nights	46,113	53,271	67,952	14,681	27.6
7+ nights	280,662	261,838	267,898	6,060	2.3
Average length of stay (nights)	9.4	9.0	8.4	-0.6	-6.7

Chart 1 Percentage distribution of departing tourists, by purpose of visit

January-May 2005-2007

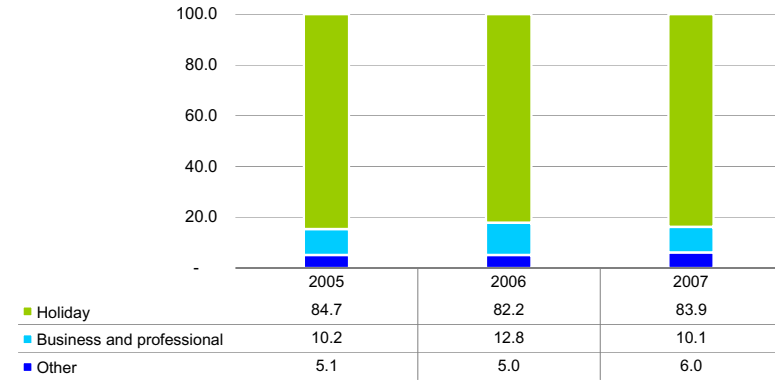


Chart 3 Average length of stay (nights), by type of accommodation

January-May 2005-2007

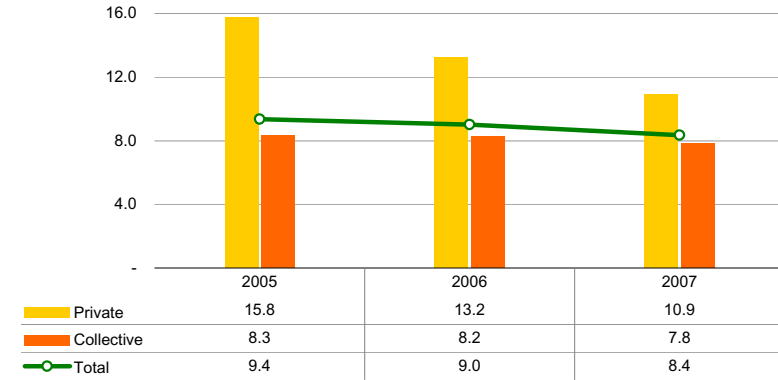


Chart 2 Average length of stay (nights), by purpose of visit

January-May 2005-2007

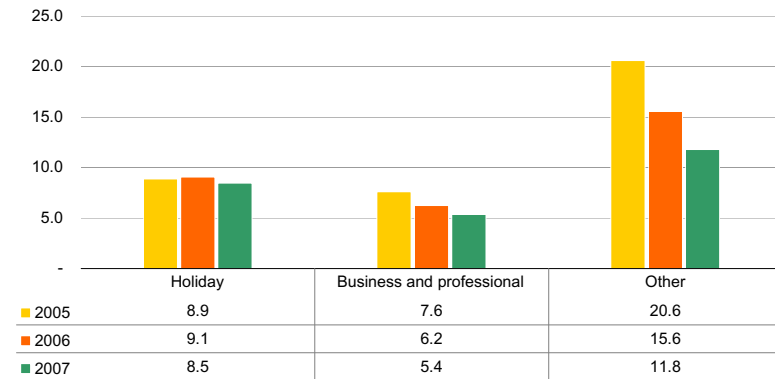


Chart 4 Departing tourists, by night bracket

January-May 2005-2007

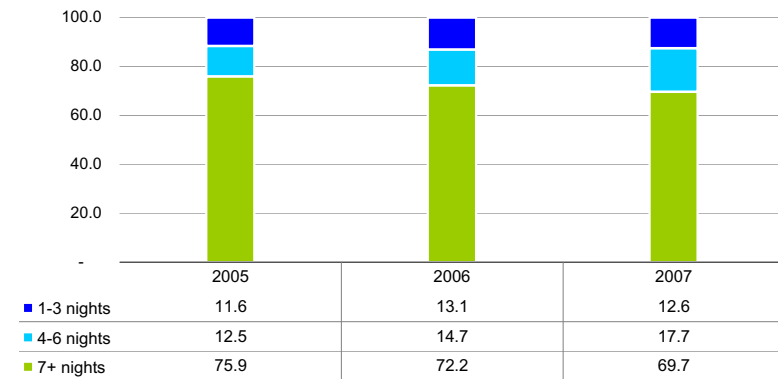


Table 7. Departing tourists, by type of accommodation

	persons				
	January-May			absolute change	percentage change
	2005	2006	2007	2007/2006	2007/2006
Total	369,632	362,688	384,380	21,692	6.0
Private accommodation	50,366	56,376	63,727	7,351	13.0
Rented	22,423	24,754	25,329	575	2.3
Staying with friends/relatives	17,634	22,958	27,792	4,834	21.1
Owner-occupied	10,309	8,664	10,606	1,942	22.4
Collective accommodation	319,266	306,312	320,653	14,341	4.7
Hotels	294,357	285,851	294,756	8,905	3.1
of which:					
5 Star	63,135	71,951	83,637	11,686	16.2
4 Star	148,166	144,462	147,506	3,044	2.1
3 Star	79,059	63,463	53,473	-9,990	-15.7
Other collective accommodation *	24,909	20,461	25,897	5,436	26.6

Table 8. Total nights spent by departing tourists, by type of accommodation

	nights				
	January-May			absolute change	percentage change
	2005	2006	2007	2007/2006	2007/2006
Total	3,456,065	3,272,243	3,210,487	-61,756	-1.9
Private accommodation	793,663	746,410	695,362	-51,048	-6.8
Rented	398,593	352,943	315,945	-36,998	-10.5
Staying with friends/relatives	236,398	276,600	262,260	-14,340	-5.2
Owner-occupied	158,672	116,867	117,157	290	0.2
Collective accommodation	2,662,402	2,525,833	2,515,125	-10,708	-0.4
Hotels	2,388,469	2,321,920	2,281,296	-40,624	-1.7
of which:					
5 Star	384,321	411,348	479,773	68,425	16.6
4 Star	1,283,516	1,254,354	1,255,370	1,016	0.1
3 Star	689,247	610,659	469,689	-140,970	-23.1
Other collective accommodation *	273,933	203,913	233,829	29,916	14.7

* Comprises apart-hotels, guesthouses, hostels and tourist villages

Table 9. Departing tourists, nights spent and total expenditure, by country of residence

	January-May			absolute change	percentage change
	2005	2006	2007	2007/2006	2007/2006
Total tourists	369,632	362,688	384,380	21,692	6.0
Austria	9,163	9,367	7,412	-1,955	-20.9
Belgium	8,315	8,652	7,266	-1,386	-16.0
France	30,898	27,615	23,973	-3,642	-13.2
Germany	49,287	44,092	43,203	-889	-2.0
Ireland	4,723	3,561	9,651	6,090	171.0
Italy	27,283	31,251	35,910	4,659	14.9
Libya	4,412	3,837	3,847	10	0.3
Netherlands	10,971	12,142	9,310	-2,832	-23.3
Russia	2,530	3,322	4,431	1,109	33.4
Scandinavia*	22,957	19,251	26,756	7,505	39.0
Switzerland	6,942	6,687	7,795	1,108	16.6
United Kingdom	150,772	150,529	154,681	4,152	2.8
USA	5,915	5,894	6,889	995	16.9
Other	35,464	36,488	43,256	6,768	18.5
Total nights	3,456,065	3,272,243	3,210,487	-61,756	-1.9
Austria	59,393	64,490	52,951	-11,539	-17.9
Belgium	56,201	60,264	51,953	-8,311	-13.8
France	222,782	206,532	179,543	-26,989	-13.1
Germany	413,205	384,037	336,026	-48,011	-12.5
Ireland	36,486	29,695	69,862	40,167	135.3
Italy	197,281	177,064	198,084	21,020	11.9
Libya	46,179	29,102	32,377	3,275	11.3
Netherlands	84,370	86,801	69,530	-17,271	-19.9
Russia	39,973	47,200	49,459	2,259	4.8
Scandinavia*	180,036	169,216	210,687	41,471	24.5
Switzerland	61,078	54,589	81,795	27,206	49.8
United Kingdom	1,528,525	1,569,445	1,505,939	-63,506	-4.0
USA	45,573	49,209	48,897	-312	-0.6
Other	484,983	344,599	323,384	-21,215	-6.2
Total expenditure (Lm'000s)	127,313	124,418	130,643	6,225	5.0
Austria	2,847	3,009	2,179	-830	-27.6
Belgium	2,959	2,639	2,479	-160	-6.1
France	10,600	9,309	8,034	-1,275	-13.7
Germany	16,669	14,640	13,881	-759	-5.2
Ireland	1,705	1,452	3,279	1,827	125.8
Italy	8,241	9,219	10,095	876	9.5
Libya	1,265	1,370	1,440	70	5.1
Netherlands	3,514	4,019	3,008	-1,011	-25.2
Russia	872	1,503	1,828	325	21.6
Scandinavia*	8,158	7,342	8,930	1,588	21.6
Switzerland	2,509	2,740	3,469	729	26.6
United Kingdom	51,776	51,051	52,685	1,634	3.2
USA	2,767	2,532	2,777	245	9.7
Other	13,431	13,593	16,559	2,966	21.8

* Denmark, Finland, Norway and Sweden

Estimates for expenditure are rounded to the nearest thousand

Table 10. Total expenditure by departing tourists

Lm 000s

	Package expenditure	Non-package expenditure		Other expenditure	Total
		Air/sea fares	Accommodation		
January-May 2007					
Total	54,031	17,890	10,406	48,316	130,643
Austria	1,175	188	93	723	2,179
Belgium	1,383	229	135	732	2,479
France	3,649	1,151	728	2,506	8,034
Germany	6,141	2,083	1,483	4,174	13,881
Ireland	949	371	341	1,618	3,279
Italy	3,511	1,644	1,171	3,769	10,095
Libya	195	411	194	640	1,440
Netherlands	1,468	343	202	995	3,008
Russia	617	337	154	720	1,828
Scandinavia*	4,396	945	503	3,086	8,930
Switzerland	1,467	376	246	1,380	3,469
United Kingdom	22,968	5,840	3,325	20,552	52,685
USA	701	562	349	1,165	2,777
Other	5,411	3,410	1,482	6,256	16,559
January-May 2006					
Total	58,824	14,445	9,875	41,274	124,418
Austria	1,659	277	248	825	3,009
Belgium	1,510	221	211	697	2,639
France	4,987	950	721	2,651	9,309
Germany	8,171	1,230	1,031	4,208	14,640
Ireland	569	174	201	508	1,452
Italy	3,372	1,714	1,393	2,740	9,219
Libya	238	279	237	616	1,370
Netherlands	2,174	347	256	1,242	4,019
Russia	576	241	144	542	1,503
Scandinavia*	3,930	702	399	2,311	7,342
Switzerland	1,346	257	317	820	2,740
United Kingdom	24,912	4,647	2,719	18,773	51,051
USA	896	555	326	755	2,532
Other	4,484	2,851	1,672	4,586	13,593
January-May 2005					
Total	62,500	14,535	9,030	41,248	127,313
Austria	1,649	307	178	713	2,847
Belgium	1,602	319	186	852	2,959
France	6,455	801	522	2,822	10,600
Germany	9,429	1,482	974	4,784	16,669
Ireland	764	200	122	619	1,705
Italy	3,334	1,426	967	2,514	8,241
Libya	97	346	322	500	1,265
Netherlands	1,725	378	210	1,201	3,514
Russia	427	97	61	287	872
Scandinavia*	4,423	615	386	2,734	8,158
Switzerland	1,167	340	230	772	2,509
United Kingdom	26,194	4,125	2,781	18,676	51,776
USA	1,027	660	345	735	2,767
Other	4,207	3,439	1,746	4,039	13,431

* Denmark, Finland, Norway and Sweden

Estimates for expenditure are rounded to the nearest thousand

Table 11. Per capita expenditure by departing tourists

Lm

	Package expenditure	Non-package expenditure		Other Expenditure	Total _w
		Air/sea fares	Accommodation		
January-May 2007					
Total	250	108	75	126	347
Austria	259	116	57	98	334
Belgium	256	124	83	101	344
France	267	117	82	105	343
Germany	252	115	86	97	327
Ireland	220	70	79	168	348
Italy	213	85	65	105	284
Libya	222	146	75	167	387
Netherlands	236	111	86	107	330
Russia	305	140	74	162	418
Scandinavia*	229	129	84	115	340
Switzerland	295	134	92	177	447
United Kingdom	256	90	69	133	348
USA	344	117	81	169	411
Other	245	164	76	145	387
January-May 2006					
Total	243	120	98	114	348
Austria	234	123	115	88	323
Belgium	228	109	113	81	307
France	242	136	115	96	340
Germany	238	126	115	95	334
Ireland	265	124	165	143	417
Italy	218	109	97	88	299
Libya	198	106	97	161	362
Netherlands	230	129	101	102	332
Russia	319	159	98	163	454
Scandinavia*	268	154	101	120	385
Switzerland	280	137	189	123	415
United Kingdom	240	100	82	125	346
USA	403	151	98	128	435
Other	247	156	100	126	377
January-May 2005					
Total	239	134	100	112	349
Austria	230	153	96	78	312
Belgium	271	134	87	103	359
France	256	141	102	91	345
Germany	239	150	109	97	340
Ireland	252	118	88	131	367
Italy	212	123	90	92	304
Libya	191	89	94	113	297
Netherlands	218	124	88	109	325
Russia	253	115	83	114	348
Scandinavia*	234	153	107	119	358
Switzerland	251	148	114	111	366
United Kingdom	235	105	98	124	351
USA	371	210	120	124	473
Other	246	187	105	114	384

* Denmark, Finland, Norway and Sweden

_w stands for weighted average - further detail can be looked up in the methodological notes - Note 6

Methodological Notes

1. The results in this release are based on the ongoing frontier survey known as TOURSTAT. All the detailed distribution is survey-based. Administrative records are used as a supplementary source for the calibration of the survey aggregates. The exercise is in the main a bottom-up approach including a calibrating weight to re-align the survey results to the true population of total passenger departures (net of transits). Yet we advise our users to exercise caution when analysing details that involve estimates of less than 1,000 tourists since such estimates may suffer from variations attributable to low frequency in the sample frame (sampling errors). There are also limitations related to non-sampling errors, namely those linked to respondents' likelihood and willingness to provide proper information and those related to language barriers.
2. Tourist air departures are collected through a continuous survey carried out at the departure lounge of Malta International Airport (MIA). A two-stage sample design is used for this survey. In the first stage alternate days are selected. Then within each shift a sample of passengers is selected systematically. Personal interviews are carried out. Monthly response rates of around 90 per cent are achieved.
3. Tourist sea departures are collected through a regular survey that is carried out at the Valletta International Seaport Terminal (VISET). Ferry sailings on every alternate day are selected. Departing passengers are interviewed personally. On average a response rate of 93 per cent is recorded for this survey.
4. The main variables collected in these surveys include the following:

Nationality	Number of nights stayed
Country of residence	Type of accommodation used
Flight/Sailing	Locality in Malta stayed longest
Final destination	Organisation of trip
Sex and age	Form of transport used
Purpose of visit	Expenditure (package/non-package/other)
Frequency of visit	

5. The expenditure data contained in this release should not be equated to national tourism earnings. Such expenditure includes elements that are earned by enterprises outside the Maltese economic territory.
6. The total per capita expenditure is a weighted average of the 'package' and 'non-package' expenditure categories based on the respective number of tourists in each category, plus the simple average of the 'other' expenditure categories.
7. The monthly passenger departures data published by the Malta International Airport cannot be equated to departing tourists because the former is inclusive of departing Maltese and transit passengers. As a result, the monthly tourism statistics published by the NSO are always lower than the combined passenger departures data available from the airport and seaport.

8. Definitions:

Usual Environment of a person consists of the direct vicinity of his/her home and place of work or study, and other places frequently visited.

Visitors comprise tourists and same-day visitors. Visitors are distinguished from other travellers according to the following criteria:

- the trip should be to a place other than that of the usual environment;
- the stay in the place visited should not last more than 12 consecutive months;
- the main purpose of visit should be other than the exercise of an activity remunerated from within the place visited.

International tourist satisfies the criteria mentioned earlier regarding visitors. Additionally, international tourists must stay at least one night in a collective or private accommodation in the country visited.

International same-day visitor is an international visitor who does not spend at least one night in collective or private accommodation.

7. The data in this release are not normally subject to revision.