

News Release



Date: 19 July 2007
No. : 118/2007
Time of release: 11.00 hrs

Transport

Sea transport between Malta and Gozo: April-June 2007

During the second quarter of 2007, sea transport between Malta and Gozo, by scheduled ferries, registered increases.

Compared to the same quarter last year, the number of commuters between the Islands increased by 4.7 per cent. Furthermore, the number of vehicles carried by scheduled vessels went up by 7.1 per cent.

The above-mentioned increases in demand, were serviced by a relatively smaller increase in supply. The number of trips in the period under review stood at 4,711, implying an increase of 1.3 per cent over the comparable period last year.

It is worth noting that the Ta' Pinu vessel reduced its trips significantly in this period, by 758, due to being docked for repairs for approximately a week in May and two weeks in June. Conversely, the Gaudos increased its trips by 814 to compensate for the Ta' Pinu vessel.

Charts 1 and 2 show average passengers and average vehicles per trip respectively, in respect of each vessel. The Malita has a constantly greater average compared to the other two vessels, due to its greater vehicle carrying capacity ■

Theme: Transport

Compiled by:

Tourism & Transport Statistics Unit
e-mail: tourism.nso@gov.mt
Tel: 25997329

The monthly calendar of NSO News Releases may be consulted on the Office's website at www.nso.gov.mt

National Statistics Office
Library & Information Unit
Lascaris, Valletta CMR 02, Malta
Tel: (+356) 25997219
Fax: (+356) 25997205
e-mail: nso@gov.mt
<http://www.nso.gov.mt>

Kindly indicate source when quoting from this release

Table 1. Sea transport between Malta and Gozo: 2005-2007

		Quarterly			absolute change	percentage change
		2005	2006	2007	2006/2007	2006/2007
Trips	Total	18,789	19,209			
	Jan-Mar	4,238	4,310	4,523	213	4.9
	Apr-Jun	4,472	4,650	4,711	61	1.3
	Jul-Sep	5,562	5,558			
	Oct-Dec	4,517	4,691			
Cars and cargo	Total	889,805	937,138			
	Jan-Mar	180,357	184,172	210,814	26,642	14.5
	Apr-Jun	220,910	236,439	253,356	16,917	7.2
	Jul-Sep	289,632	298,066			
	Oct-Dec	198,906	218,461			
Passengers	Total	3,462,601	3,554,714			
	Jan-Mar	625,998	618,760	711,961	93,201	15.1
	Apr-Jun	899,959	947,273	991,615	44,342	4.7
	Jul-Sep	1,219,075	1,216,257			
	Oct-Dec	717,569	772,424			

Table 2. Sea transport between Malta and Gozo, by vessel: 2005-2007

		June Quarter			absolute change	percentage change
		2005	2006	2007	2006/2007	2006/2007
Trips	Total	4,472	4,650	4,711	61	1.3
	Gaudos	1,686	1,218	2,032	814	66.8
	Ta' Pinu	1,481	1,578	820	-758	-48.0
	Malita	1,305	1,854	1,859	5	0.3
Cars and cargo	Total	220,910	236,439	253,330	16,891	7.1
	Gaudos	74,533	56,089	95,895	39,806	71.0
	Ta' Pinu	66,508	71,818	41,175	-30,643	-42.7
	Malita	79,869	108,532	116,260	7,728	7.1
Passengers	Total	899,959	947,273	991,605	44,332	4.7
	Gaudos	304,601	231,197	384,885	153,688	66.5
	Ta' Pinu	268,328	292,080	163,831	-128,249	-43.9
	Malita	327,030	423,996	442,889	18,893	4.5

Table 3. Sea transport between Malta and Gozo, by vessel: 2005-2007

		January-June			absolute change	percentage change
		2005	2006	2007	2006/2007	2006/2007
		Trips	Total	8,710	8,960	9,234
	Gaudos	3,491	2,392	3,306	914	38.2
	Ta' Pinu	2,459	3,086	2,215	-871	-28.2
	Malita	2,760	3,482	3,713	231	6.6
Cars and cargo	Total	401,267	420,611	464,144	43,533	10.3
	Gaudos	136,632	99,827	147,313	47,486	47.6
	Ta' Pinu	106,753	128,435	100,584	-27,851	-21.7
	Malita	157,882	192,349	216,247	23,898	12.4
Passengers	Total	1,525,957	1,566,033	1,703,566	137,533	8.8
	Gaudos	515,839	384,973	557,069	172,096	44.7
	Ta' Pinu	411,193	480,240	370,917	-109,323	-22.8
	Malita	598,925	700,820	775,580	74,760	10.7

Chart 1. Monthly average number of passengers per trip: 2005-2007

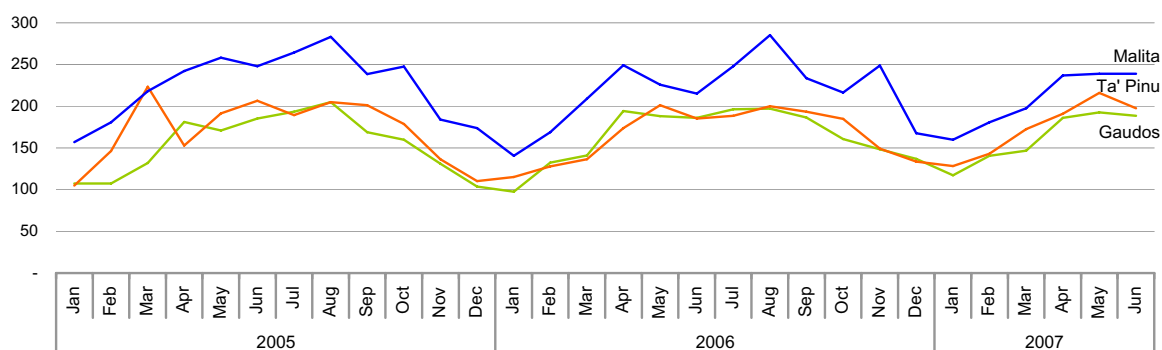


Chart 2. Monthly average number of cars and cargo per trip: 2005-2007

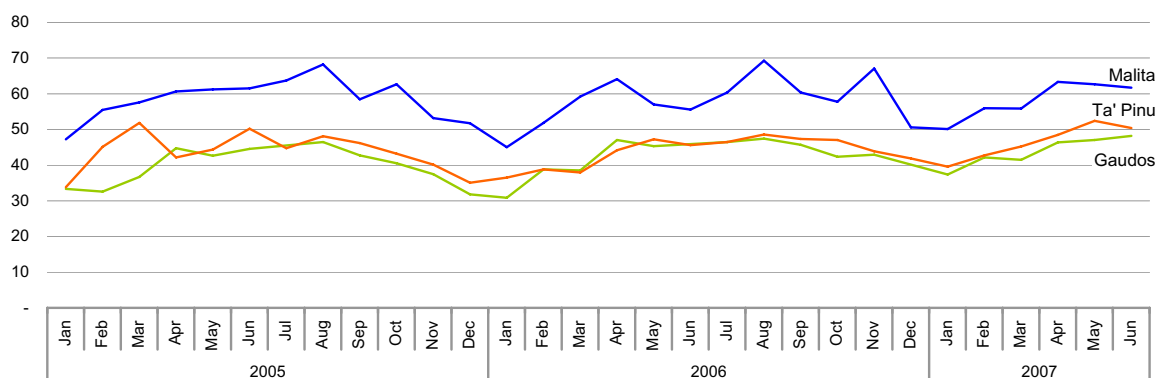


Table 4. Monthly sea transport between Malta and Gozo: 2005-2007

		Monthly			absolute change	percentage change
		2005	2006	2007	2006/2007	2006/2007
		Trips	Total	8,710	8,960	9,234
	January	1,436	1,438	1,500	62	4.3
	February	1,297	1,342	1,443	101	7.5
	March	1,505	1,530	1,580	50	3.3
	April	1,436	1,556	1,554	-2	-0.1
	May	1,486	1,526	1,580	54	3.5
	June	1,550	1,568	1,577	9	0.6
Cars and cargo	Total	401,267	420,611	464,170	43,559	10.4
	January	54,603	56,202	65,105	8,903	15.8
	February	55,367	59,998	69,076	9,078	15.1
	March	70,387	67,972	76,633	8,661	12.7
	April	68,101	80,817	83,923	3,106	3.8
	May	73,853	77,184	84,044	6,860	8.9
	June	78,956	78,438	85,389	6,951	8.9
Passengers	Total	1,525,957	1,566,033	1,703,576	137,543	8.8
	January	176,231	176,501	207,709	31,208	17.7
	February	180,879	198,084	226,986	28,902	14.6
	March	268,888	244,175	277,266	33,091	13.6
	April	265,350	320,106	324,410	4,304	1.3
	May	310,864	315,719	334,620	18,901	6.0
	June	323,745	311,448	332,585	21,137	6.8

Methodological Notes

1. For the purposes of this News Release, Scheduled Transport refers to the services of the Gozo Channel Co. Ltd.
2. The data in this release are compiled from administrative information provided by the Gozo Channel Co. Ltd.
3. The data are full and are not normally subject to revision.
4. The table below illustrates the passengers and vehicles capacity by each Gozo Channel vessel:

Carrying capacity

Vessel	Vehicles	Passengers
Gaudos	72	900
Malita	138	900
Ta' Pinu	72	900