

News Release



Date: 31 December 2007
No. : 207/2007
Time of release: 11.00 hrs

Tourism

Departing tourists: November 2007

Inbound tourists in November are estimated to have increased by 15.3 per cent when compared to the same month in 2006. Year on year, total nights spent increased by 7.7 per cent.

November 2007

According to the ongoing frontier survey, tourist departures in November 2007 are estimated at 82,474, implying an increase of 15.3 per cent over the same month in 2006. The increase reflects primarily a rise in holiday makers, mainly from the British, Scandinavian and German markets. By contrast, a decrease was registered in tourists from Russia, Italy and USA.

Meanwhile, total nights spent increased by 7.7 per cent when compared to the same month in 2006. Year on year, total nights spent in both private and collective accommodation increased by 8.1 and 7.6 per cent respectively. Overall, the average length of stay is calculated at 7.7 nights, down by 0.5 nights when compared to November 2006.

Theme:
Industry and Services

January-November 2007

Inbound tourists for the past eleven months are estimated at 1,191,978, implying an increase of 10.6 per cent over the corresponding period a year ago. The growth was primarily attributable to an increase in holiday visits, mainly from the British, Irish and Scandinavian markets. Decreases were recorded in respect of the Austrian, Dutch and Belgian markets.

Table 6 shows that 87.1 per cent of all inbound visits involved tourists coming from EU Member States. Although there was an increase in repeat tourism, data show that the overall increase was primarily characterised by a rise in first-time visits, estimated to account for 68.1 per cent of the total. The largest age bracket comprised tourists aged between 45 and 64, albeit the strongest increase is attributable to tourists aged between 25 and 44.

Total nights spent increased by 3.9 per cent when compared to the same period in 2006. Nights spent in private accommodation increased by 6.7 per cent, while those in collective accommodation registered an increase of 2.8 per cent. Tourist nights in rented accommodation and in lodging with family and friends increased by 2.0 and 19.4 per cent respectively, while those spent in owner-occupied accommodation registered a drop of 3.6 per cent. With regard to guest-nights in collective accommodation, a 22.9 per cent increase in the 5-star category contrasted with a decrease in 3-star accommodation and a lesser decrease in the 4-star category. The average length of stay of inbound tourists is calculated at 8.9 nights, down by 0.6 nights when compared to last year's level.

Compiled by:

Tourism Statistics Unit
e-mail: tourism.nso@gov.mt
Tel: 25997329

During the period under review, total tourist expenditure is estimated at Lm440.5 million, an increase of 6.3 per cent over the same period in 2006. The increase was underpinned by higher non-package and other expenditure. Although the majority are still opting for package travel, direct bookings and non-package stays are exhibiting an increasing trend.

The survey results indicate that the per capita total expenditure is estimated at Lm378, down by 3.1 per cent when compared to the same period in the previous year ■

The monthly calendar of NSO News Releases may be consulted on the Office's website at www.nso.gov.mt

National Statistics Office
Library & Information Unit
Lascaris, Valletta VLT 2000, Malta
Tel: (+356) 25997219
Fax: (+356) 25997205
e-mail: nso@gov.mt
<http://www.nso.gov.mt>

Table 1. Profile of departing tourists

	November			absolute change	percentage change
	2005	2006	2007	2007/2006	2007/2006
	Total	69,652	71,536	82,474	10,938
Mode of travel:					
Air	69,527	71,023	81,784	10,761	15.2
Sea	125	513	690	177	34.5
Sex:					
Males	37,990	36,749	44,604	7,855	21.4
Females	31,662	34,787	37,870	3,083	8.9
Age group:					
0-24	3,280	4,790	6,191	1,401	29.2
25-44	23,801	24,341	30,731	6,390	26.3
45-64	33,195	32,691	37,030	4,339	13.3
65+	9,376	9,714	8,522	-1,192	-12.3
Markets:					
EU	59,632	61,748	71,378	9,630	15.6
Euro area	23,637	28,531	31,671	3,140	11.0
Non-EU	10,020	9,788	11,096	1,308	13.4
Purpose of visit:					
Holiday	55,135	58,819	67,504	8,685	14.8
Business and professional	11,116	9,239	10,465	1,226	13.3
Other	3,401	3,478	4,505	1,027	29.5
Organisation of stay					
Package	45,867	45,644	36,898	-8,746	-19.2
Non-package	23,785	25,892	45,576	19,684	76.0
Frequency					
First-time tourists	44,486	45,564	53,535	7,971	17.5
Repeat tourists	25,166	25,972	28,939	2,967	11.4
less than once a year	19,783	18,252	19,831	1,579	8.7
more than twice a year	5,383	7,720	9,108	1,388	18.0
Duration of visit:					
1-3 nights	7,615	7,825	10,674	2,849	36.4
4-6 nights	10,051	15,921	17,851	1,930	12.1
7+ nights	51,986	47,790	53,949	6,159	12.9
Average length of stay (nights)	8.6	8.2	7.7	-0.5	-6.1

Table 2. Departing tourists, by type of accommodation

	November			persons	
				absolute change	percentage change
	2005	2006	2007	2007/2006	2007/2006
Total	69,652	71,536	82,474	10,938	15.3
Private accommodation	8,704	8,148	13,093	4,945	60.7
Collective accommodation	60,948	63,388	69,381	5,993	9.5
Hotels	57,703	59,656	62,943	3,287	5.5
Other collective accommodation *	3,245	3,732	6,438	2,706	72.5

Table 3. Total nights spent by departing tourists, by type of accommodation

	November			nights	
				absolute change	percentage change
	2005	2006	2007	2007/2006	2007/2006
Total	596,691	587,448	632,618	45,170	7.7
Private accommodation	128,203	116,525	125,949	9,424	8.1
Collective accommodation	468,488	470,923	506,669	35,746	7.6
Hotels	436,039	436,054	449,288	13,234	3.0
Other collective accommodation *	32,449	34,869	57,381	22,512	64.6

Table 4. Total expenditure by departing tourists, by expenditure categories

	November			Lm 000s	
				absolute change	percentage change
	2005	2006	2007	2007/2006	2007/2006
Total	23,975	24,244	23,749	-495	-2.0
Package	10,636	10,869	8,630	-2,239	-20.6
Non-package	4,828	4,492	6,088	1,596	35.5
Air/sea fares	3,067	2,930	3,557	627	21.4
Accommodation	1,761	1,562	2,531	969	62.0
Other expenditure	8,511	8,883	9,031	148	1.7

* Comprises apart-hotels, guesthouses, hostels and tourist villages
 Estimates for expenditure are rounded to the nearest thousand

Table 5. Departing tourists, nights spent and total expenditure, by country of residence

	November			absolute change	percentage change
	2005	2006	2007	2007/2006	2007/2006
Total tourists	69,652	71,536	82,474	10,938	15.3
Austria	1,700	1,586	1,491	-95	-6.0
Belgium	2,055	1,585	1,874	289	18.2
France	1,905	3,784	4,228	444	11.7
Germany	10,207	10,787	11,557	770	7.1
Ireland	669	1,261	1,584	323	25.6
Italy	3,695	5,593	5,226	-367	-6.6
Libya	411	563	626	63	11.2
Netherlands	1,394	1,687	1,513	-174	-10.3
Russia	930	1,380	986	-394	-28.6
Scandinavia*	4,833	4,398	7,292	2,894	65.8
Switzerland	1,285	1,227	1,460	233	19.0
United Kingdom	30,751	27,609	32,936	5,327	19.3
USA	1,340	1,465	1,171	-294	-20.1
Other	8,477	8,611	10,530	1,919	22.3
Total nights	596,691	587,448	632,618	45,170	7.7
Austria	12,518	9,617	9,482	-135	-1.4
Belgium	13,486	9,973	12,253	2,280	22.9
France	12,559	25,827	26,357	530	2.1
Germany	82,823	94,833	91,976	-2,857	-3.0
Ireland	6,168	16,129	13,509	-2,620	-16.2
Italy	18,832	30,689	25,994	-4,695	-15.3
Libya	6,883	2,558	2,649	91	3.6
Netherlands	10,455	12,423	12,681	258	2.1
Russia	6,178	9,554	7,035	-2,519	-26.4
Scandinavia*	33,291	30,791	46,993	16,202	52.6
Switzerland	10,942	10,688	12,765	2,077	19.4
United Kingdom	303,969	249,217	282,934	33,717	13.5
USA	9,800	10,340	7,730	-2,610	-25.2
Other	68,787	74,809	80,260	5,451	7.3
Total expenditure (Lm'000s)	23,975	24,244	23,749	-495	-2.0
Austria	549	509	497	-12	-2.4
Belgium	659	543	617	74	13.6
France	715	1,222	1,224	2	0.2
Germany	3,383	3,694	3,141	-553	-15.0
Ireland	251	746	547	-199	-26.7
Italy	1,095	1,546	1,173	-373	-24.1
Libya	127	157	174	17	10.8
Netherlands	462	535	481	-54	-10.1
Russia	302	468	259	-209	-44.7
Scandinavia*	1,630	1,432	2,455	1,023	71.4
Switzerland	491	459	433	-26	-5.7
United Kingdom	10,371	9,105	9,357	252	2.8
USA	546	518	318	-200	-38.6
Other	3,394	3,310	3,073	-237	-7.2

* Denmark, Finland, Norway and Sweden

Estimates for expenditure are rounded to the nearest thousand

Table 6. Profile of departing tourists

	January-November			absolute change	percentage change
	2005	2006	2007	2007/2006	2007/2006
	Total	1,130,196	1,077,753	1,191,978	114,225
Mode of travel:					
Air	1,110,489	1,058,188	1,173,037	114,849	10.9
Sea	19,707	19,565	18,941	-624	-3.2
Sex:					
Males	573,584	547,115	600,532	53,417	9.8
Females	556,612	530,638	591,446	60,808	11.5
Age group:					
0-24	131,729	148,094	183,888	35,794	24.2
25-44	417,517	383,958	429,704	45,746	11.9
45-64	459,708	446,635	471,581	24,946	5.6
65+	121,242	99,066	106,805	7,739	7.8
Markets:					
EU	991,572	933,503	1,037,726	104,223	11.2
Euro area	448,802	444,585	475,972	31,387	7.1
Non-EU	138,624	144,250	154,252	10,002	6.9
Purpose of visit:					
Holiday	968,440	902,114	1,003,687	101,573	11.3
Business and professional	89,120	95,755	92,417	-3,338	-3.5
Other	72,636	79,884	95,874	15,990	20.0
Organisation of stay					
Package	755,137	727,470	662,311	-65,159	-9.0
Non-package	375,059	350,283	529,667	179,384	51.2
Frequency					
First-time tourists	761,196	731,244	812,333	81,089	11.1
Repeat tourists	369,000	346,509	379,645	33,136	9.6
less than once a year	302,524	275,132	292,139	17,007	6.2
more than twice a year	66,476	71,377	87,506	16,129	22.6
Duration of visit:					
1-3 nights	94,804	98,477	109,107	10,630	10.8
4-6 nights	112,388	125,741	151,481	25,740	20.5
7+ nights	923,004	853,535	931,390	77,855	9.1
Average length of stay (nights)	9.4	9.5	8.9	-0.6	-6.3

Chart 1 Percentage distribution of departing tourists, by purpose of visit

January-November 2005-2007

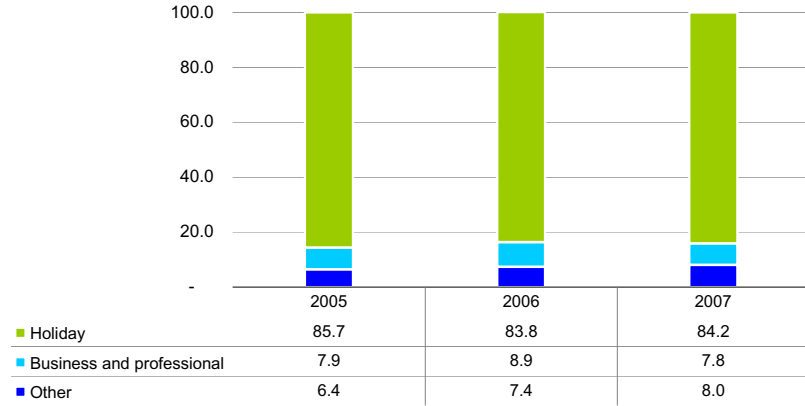


Chart 3 Average length of stay (nights), by type of accommodation

January-November 2005-2007

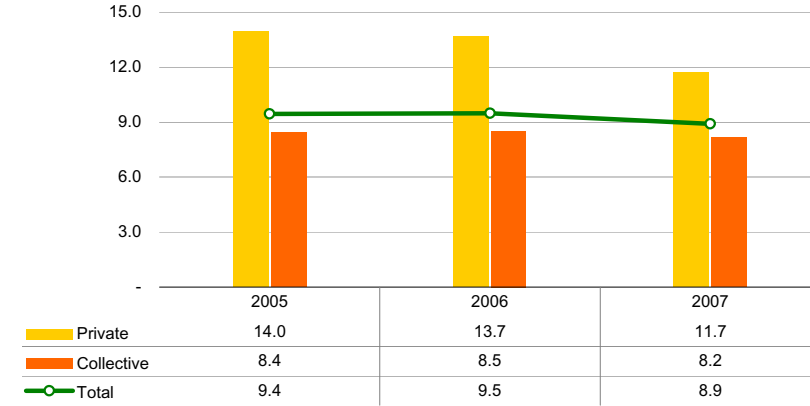


Chart 2 Average length of stay (nights), by purpose of visit

January-November 2005-2007

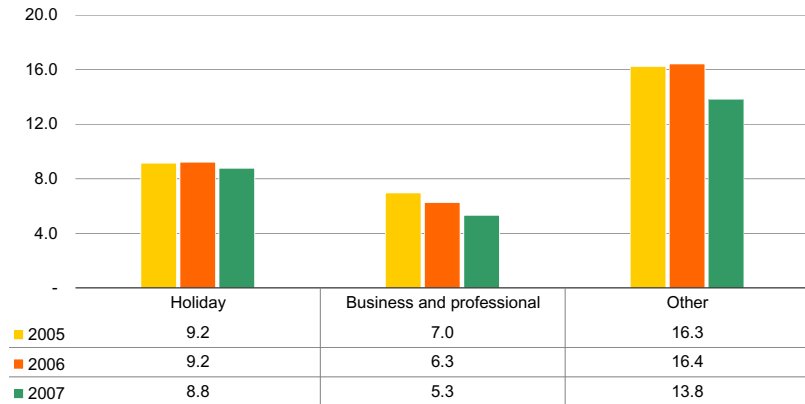


Chart 4 Departing tourists, by night bracket

January-November 2005-2007

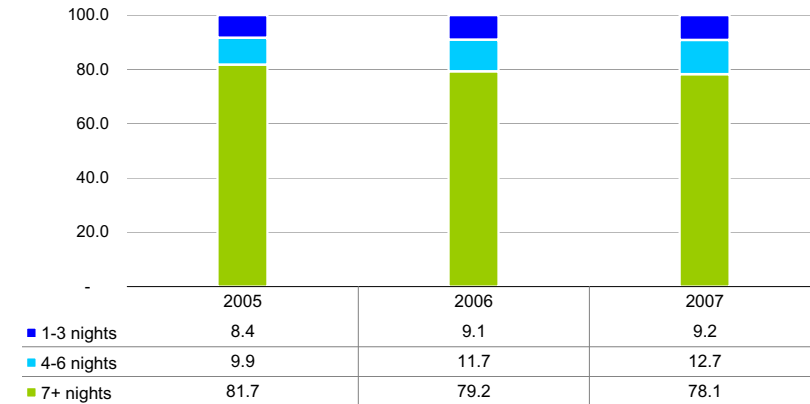


Table 7. Departing tourists, by type of accommodation

	January-November			persons	
				absolute change	percentage change
	2005	2006	2007	2007/2006	2007/2006
Total	1,130,196	1,077,753	1,191,978	114,225	10.6
Private accommodation	206,363	202,983	252,669	49,686	24.5
Rented	106,863	103,282	128,658	25,376	24.6
Staying with friends/relatives	66,444	69,187	91,845	22,658	32.7
Owner-occupied	33,056	30,514	32,166	1,652	5.4
Collective accommodation	923,833	874,770	939,309	64,539	7.4
Hotels	842,007	801,378	855,760	54,382	6.8
of which:					
5 Star	168,527	184,331	228,656	44,325	24.0
4 Star	422,670	412,614	420,060	7,446	1.8
3 Star	237,505	182,443	180,532	-1,911	-1.0
Other collective accommodation *	81,826	73,392	83,549	10,157	13.8

Table 8. Total nights spent by departing tourists, by type of accommodation

	January-November			nights	
				absolute change	percentage change
	2005	2006	2007	2007/2006	2007/2006
Total	10,667,576	10,226,834	10,624,324	397,490	3.9
Private accommodation	2,880,232	2,770,906	2,957,321	186,415	6.7
Rented	1,531,642	1,502,949	1,533,738	30,789	2.0
Staying with friends/relatives	879,556	873,392	1,043,261	169,869	19.4
Owner-occupied	469,034	394,565	380,322	-14,243	-3.6
Collective accommodation	7,787,344	7,455,928	7,667,003	211,075	2.8
Hotels	6,942,584	6,712,985	6,867,498	154,513	2.3
of which:					
5 Star	1,120,954	1,201,408	1,476,770	275,362	22.9
4 Star	3,625,945	3,608,554	3,548,721	-59,833	-1.7
3 Star	2,085,567	1,707,743	1,625,326	-82,417	-4.8
Other collective accommodation *	844,760	742,943	799,505	56,562	7.6

* Comprises Aparthotels, guesthouses, hostels and tourist villages

Table 9. Departing tourists, nights spent and total expenditure, by country of residence

	January-November			absolute change	percentage change
	2005	2006	2007	2007/2006	2007/2006
	Total tourists	1,130,196	1,077,753	1,191,978	114,225
Austria	25,848	23,289	19,678	-3,611	-15.5
Belgium	27,750	28,222	25,540	-2,682	-9.5
France	80,414	71,783	72,971	1,188	1.7
Germany	131,960	119,751	123,523	3,772	3.1
Ireland	16,918	14,570	27,213	12,643	86.8
Italy	89,923	107,504	108,971	1,467	1.4
Libya	9,681	8,494	8,500	6	0.1
Netherlands	36,494	36,869	33,723	-3,146	-8.5
Russia	16,204	21,357	22,253	896	4.2
Scandinavia*	71,044	72,323	83,780	11,457	15.8
Switzerland	19,510	20,447	21,417	970	4.7
United Kingdom	466,676	411,604	463,389	51,785	12.6
USA	17,476	16,366	19,736	3,370	20.6
Other	120,298	125,174	161,284	36,110	28.8
Total nights	10,667,576	10,226,834	10,624,324	397,490	3.9
Austria	196,587	180,381	161,774	-18,607	-10.3
Belgium	223,972	234,889	196,295	-38,594	-16.4
France	656,162	613,034	593,871	-19,163	-3.1
Germany	1,180,576	1,115,463	1,051,080	-64,383	-5.8
Ireland	148,535	144,606	219,449	74,843	51.8
Italy	698,290	819,034	793,255	-25,779	-3.1
Libya	96,404	76,763	72,263	-4,500	-5.9
Netherlands	310,586	303,784	279,714	-24,070	-7.9
Russia	191,400	326,064	270,888	-55,176	-16.9
Scandinavia*	619,567	651,501	688,816	37,315	5.7
Switzerland	200,804	187,818	219,164	31,346	16.7
United Kingdom	4,594,625	4,038,643	4,339,427	300,784	7.4
USA	142,905	157,153	164,601	7,448	4.7
Other	1,407,163	1,377,701	1,573,727	196,026	14.2
Total expenditure (Lm'000s)	420,600	414,264	440,497	26,233	6.3
Austria	8,743	8,515	6,647	-1,868	-21.9
Belgium	10,675	10,358	9,430	-928	-9.0
France	30,045	27,192	27,738	546	2.0
Germany	47,192	43,968	42,576	-1,392	-3.2
Ireland	7,037	6,964	10,063	3,099	44.5
Italy	30,166	37,004	36,107	-897	-2.4
Libya	3,162	3,260	3,000	-260	-8.0
Netherlands	13,135	13,624	12,365	-1,259	-9.2
Russia	6,784	11,313	11,209	-104	-0.9
Scandinavia*	27,837	29,444	31,500	2,056	7.0
Switzerland	8,225	9,020	9,389	369	4.1
United Kingdom	169,724	152,371	163,789	11,418	7.5
USA	7,293	6,971	7,254	283	4.1
Other	50,582	54,260	69,430	15,170	28.0

* Denmark, Finland, Norway and Sweden

Estimates for expenditure are rounded to the nearest thousand

Table 10. Total expenditure by departing tourists

Lm 000s

	Package expenditure	Non-package expenditure		Other expenditure	Total
		Air/sea fares	Accommodation		
January-November 2007					
Total	184,889	58,475	42,001	155,132	440,497
Austria	3,547	541	402	2,157	6,647
Belgium	5,185	877	675	2,693	9,430
France	12,456	3,900	3,448	7,934	27,738
Germany	19,817	5,288	4,981	12,490	42,576
Ireland	3,448	1,043	1,092	4,480	10,063
Italy	14,606	4,788	4,544	12,169	36,107
Libya	383	776	511	1,330	3,000
Netherlands	6,467	1,022	744	4,132	12,365
Russia	5,902	955	647	3,705	11,209
Scandinavia*	15,185	3,237	2,265	10,813	31,500
Switzerland	4,086	1,181	911	3,211	9,389
United Kingdom	66,899	19,870	13,469	63,551	163,789
USA	1,630	1,764	1,131	2,729	7,254
Other	25,278	13,233	7,181	23,738	69,430
January-November 2006					
Total	202,688	44,873	28,198	138,505	414,264
Austria	4,869	735	558	2,353	8,515
Belgium	6,617	603	478	2,660	10,358
France	15,926	2,320	1,738	7,208	27,192
Germany	25,033	3,430	2,776	12,729	43,968
Ireland	2,973	573	425	2,993	6,964
Italy	17,555	4,573	3,680	11,196	37,004
Libya	413	609	672	1,566	3,260
Netherlands	7,628	904	685	4,407	13,624
Russia	5,892	864	703	3,854	11,313
Scandinavia*	16,671	1,974	1,235	9,564	29,444
Switzerland	4,721	882	718	2,699	9,020
United Kingdom	71,285	15,477	8,910	56,699	152,371
USA	1,826	1,942	962	2,241	6,971
Other	21,279	9,987	4,658	18,336	54,260
January-November 2005					
Total	200,919	48,851	32,547	138,283	420,600
Austria	5,176	657	487	2,423	8,743
Belgium	6,569	718	526	2,862	10,675
France	17,622	2,781	1,879	7,763	30,045
Germany	26,041	4,164	3,384	13,603	47,192
Ireland	3,199	700	445	2,693	7,037
Italy	12,579	4,392	4,039	9,156	30,166
Libya	265	794	782	1,321	3,162
Netherlands	6,952	994	795	4,394	13,135
Russia	3,736	514	424	2,110	6,784
Scandinavia*	14,775	2,277	1,712	9,073	27,837
Switzerland	4,149	915	694	2,467	8,225
United Kingdom	79,484	16,872	10,855	62,513	169,724
USA	2,111	2,170	989	2,023	7,293
Other	18,261	10,903	5,536	15,882	50,582

* Denmark, Finland, Norway and Sweden

Estimates for expenditure are rounded to the nearest thousand

Table 11. Per capita expenditure by departing tourists

Lm

	Package expenditure	Non-package expenditure		Other Expenditure	Total ^w
		Air/sea fares	Accommodation		
January-November 2007					
Total	279	112	95	130	378
Austria	293	109	85	110	374
Belgium	287	124	103	105	376
France	308	126	121	109	390
Germany	273	105	104	101	348
Ireland	254	80	100	165	382
Italy	274	86	92	112	337
Libya	223	117	86	157	363
Netherlands	261	114	97	123	370
Russia	374	147	108	167	506
Scandinavia*	271	122	95	129	383
Switzerland	323	135	115	150	443
United Kingdom	265	94	85	137	363
USA	277	128	90	138	374
Other	307	169	99	147	435
January-November 2006					
Total	279	129	98	129	390
Austria	276	134	108	101	369
Belgium	284	123	107	94	369
France	292	135	113	100	382
Germany	271	126	112	106	370
Ireland	295	128	121	205	486
Italy	275	105	94	104	348
Libya	219	92	108	184	389
Netherlands	257	127	115	120	373
Russia	380	148	125	180	531
Scandinavia*	290	140	98	132	412
Switzerland	335	139	125	132	445
United Kingdom	265	108	88	138	379
USA	328	180	103	137	435
Other	293	190	99	147	438
January-November 2005					
Total	266	130	105	122	378
Austria	254	121	104	94	341
Belgium	300	123	97	103	386
France	289	143	107	97	376
Germany	261	130	115	103	360
Ireland	284	124	94	159	421
Italy	258	106	109	102	340
Libya	251	92	102	136	337
Netherlands	250	115	103	120	363
Russia	306	128	128	130	424
Scandinavia*	269	142	115	128	394
Switzerland	316	144	120	127	425
United Kingdom	255	109	96	134	373
USA	315	201	102	116	424
Other	282	197	110	132	425

* Denmark, Finland, Norway and Sweden

^w stands for weighted average - further detail can be looked up in the methodological notes - Note 6

Methodological Notes

1. The results in this release are based on the ongoing frontier survey known as TOURSTAT. All the detailed distribution is survey-based. Administrative records are used as a supplementary source for the calibration of the survey aggregates. The exercise is in the main a bottom-up approach including a calibrating weight to re-align the survey results to the true population of total passenger departures (net of transits). Yet we advise our users to exercise caution when analysing details that involve estimates of less than 1,000 tourists since such estimates may suffer from variations attributable to low frequency in the sample frame (sampling errors). There are also limitations related to non-sampling errors, namely those linked to respondents' likelihood and willingness to provide proper information and those related to language barriers.
2. Tourist air departures are collected through a continuous survey carried out at the departure lounge of Malta International Airport (MIA). A two-stage sample design is used for this survey. In the first stage alternate days are selected. Then within each shift a sample of passengers is selected systematically. Personal interviews are carried out. Monthly response rates of around 90 per cent are achieved.
3. Tourist sea departures are collected through a regular survey that is carried out at the Valletta International Seaport Terminal (VISET). Ferry sailings on every alternate day are selected. Departing passengers are interviewed personally. On average a response rate of 93 per cent is recorded for this survey.
4. The main variables collected in these surveys include the following:

Nationality	Number of nights stayed
Country of residence	Type of accommodation used
Flight/Sailing	Locality in Malta stayed longest
Final destination	Organisation of trip
Sex and age	Form of transport used
Purpose of visit	Expenditure (package/non-package/other)
Frequency of visit	

5. The expenditure data contained in this release should not be equated to national tourism earnings. Such expenditure includes elements that are earned by enterprises outside the Maltese economic territory.
6. The total per capita expenditure is a weighted average of the 'package' and 'non-package' expenditure categories based on the respective number of tourists in each category, plus the simple average of the 'other' expenditure categories.
7. The monthly passenger departures data published by the Malta International Airport cannot be equated to departing tourists because the former is inclusive of departing Maltese and transit passengers. As a result, the monthly tourism statistics published by the NSO are always lower than the combined passenger departures data available from the airport and seaport.

8. Definitions:

Usual Environment of a person consists of the direct vicinity of his/her home and place of work or study, and other places frequently visited.

Visitors comprise tourists and same-day visitors. Visitors are distinguished from other travellers according to the following criteria:

- the trip should be to a place other than that of the usual environment;
- the stay in the place visited should not last more than 12 consecutive months;
- the main purpose of visit should be other than the exercise of an activity remunerated from within the place visited.

International tourist satisfies the criteria mentioned earlier regarding visitors. Additionally, international tourists must stay at least one night in a collective or private accommodation in the country visited.

International same-day visitor is an international visitor who does not spend at least one night in collective or private accommodation.

7. The data in this release are not normally subject to revision.