

News Release



Date: 30 April 2007
No. : 73/2007
Time of release: 11.00 hrs

Theme:
Industry and Services

Compiled by:

Tourism Statistics Unit
e-mail: tourism.nso@gov.mt
Tel: 25997329

The monthly calendar of NSO News Releases may be consulted on the Office's website at www.nso.gov.mt

Tourism

Departing tourists: March 2007

Inbound tourists during March 2007 are estimated to have increased by 10.8 per cent when compared to the same month in 2006. Over the same period, total tourist expenditure increased by 12.8 per cent.

Tourists

According to the ongoing frontier survey, tourist departures in March 2007 are estimated at 71,281, implying an increase of 10.8 per cent over the same month in 2006. The increase reflects primarily a rise in holiday makers; mainly from the Italian, French and British markets. A minor decrease was registered in the Belgian, Austrian and American markets.

Tourists staying in collective and private accommodation establishments registered increases when compared to March 2006.

Nights spent

Total nights spent registered a 1.1 per cent increase when compared to the same month in 2006. Year-on-year, nights spent in collective accommodation remained almost unchanged while those in private accommodation increased by 5.6 per cent. Overall, the average length of stay stood at 8.4 nights, indicating a drop of 0.8 nights when compared to the same month a year ago.

Expenditure

Total tourist expenditure is estimated at Lm23.6 million, an increase of 12.8 per cent over the same month in 2006. This increase was underpinned by higher non-package expenditure and other expenditure ■

In this release all tables refer to air and sea departing tourists and as such, are not comparable to tables in previous news releases that referred to air departures only.

Monthly news releases on tourism statistics will henceforth be complemented by quarterly releases that will comprise a greater level of detail.

National Statistics Office
Library & Information Unit
Lascaris, Valletta CMR 02, Malta
Tel: (+356) 25997219
Fax: (+356) 25997205
e-mail: nso@gov.mt
<http://www.nso.gov.mt>

Table 1. Departing tourists, by mode of travel, sex and age group

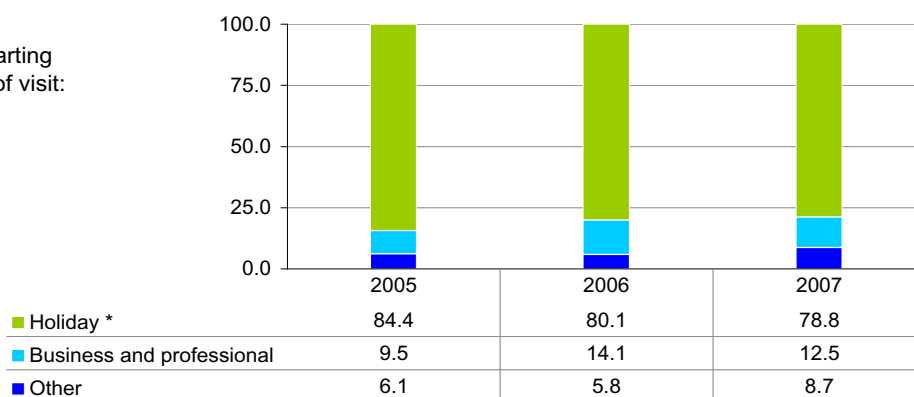
	March			Absolute change	Percentage change
	2005	2006	2007	2007/2006	2007/2006
Total	71,277	64,343	71,281	6,938	10.8
Mode of travel					
Air	70,562	64,018	70,994	6,976	10.9
Sea	715	325	287	-38	-11.7
Sex:					
Males	35,622	34,468	38,097	3,629	10.5
Females	35,655	29,875	33,184	3,309	11.1
Age group:					
0-24	7,105	2,987	6,813	3,826	128.1
25-44	20,231	17,667	20,969	3,302	18.7
45-64	30,951	33,558	33,186	-372	-1.1
65+	12,990	10,131	10,313	182	1.8

Table 2. Departing tourists, by purpose of visit

	March			Absolute change	Percentage change
	2005	2006	2007	2007/2006	2007/2006
Total	71,277	64,343	71,281	6,938	10.8
Holiday *	60,182	51,538	56,110	4,572	8.9
Business and professional	6,752	9,041	8,939	-102	-1.1
Other	4,343	3,764	6,232	2,468	65.6

Chart 1

% distribution of departing tourists, by purpose of visit: March 2005-2007



* Including visiting family and friends

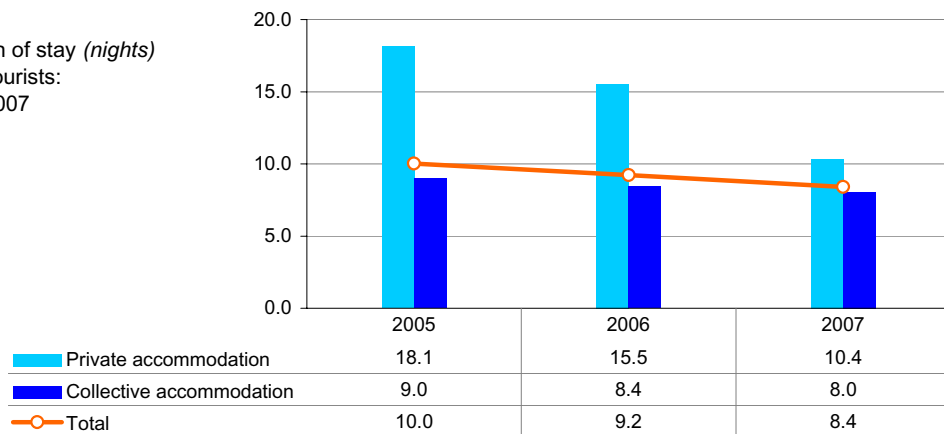
Table 3. Departing tourists, by type of accommodation

	March			Absolute change	Percentage change
	2005	2006	2007	2007/2006	2007/2006
	Total	71,277	64,343	71,281	6,938
Private accommodation	8,078	7,144	11,311	4,167	58.3
Collective accommodation	63,199	57,199	59,970	2,771	4.8
Hotels	59,681	54,230	55,706	1,476	2.7
Other collective accommodation *	3,518	2,969	4,264	1,295	43.6

Table 4. Total nights spent by departing tourists, by type of accommodation

	March			Absolute change	Percentage change
	2005	2006	2007	2007/2006	2007/2006
	Total	713,713	593,401	599,771	6,370
Private accommodation	146,530	110,934	117,155	6,221	5.6
Collective accommodation	567,183	482,467	482,616	149	0.0
Hotels	508,377	449,184	443,230	-5,954	-1.3
Other collective accommodation *	58,807	33,283	39,385	6,102	18.3

Chart 2
Average length of stay (*nights*)
by departing tourists:
March 2005-2007



* Comprises apart-hotels, guesthouses, hostels and tourist villages

Table 5. Total Expenditure by departing tourists, by expenditure categories*Lm 000s*

	March			Absolute change	Percentage change
	2005	2006	2007	2007/2006	2007/2006
	Total	24,277.7	20,965.5	23,645.7	2,680.2
Package	12,152.0	9,241.3	9,443.8	202.5	2.2
Non-package	4,359.6	4,539.2	5,483.8	944.6	20.8
Air/sea fares	2,420.6	2,770.6	3,351.9	581.3	21.0
Accommodation	1,938.9	1,768.6	2,131.9	363.2	20.5
Other expenditure	7,766.1	7,185.0	8,718.1	1,533.1	21.3

Note: refer to methodological note 4.

Table 6. Departing tourists, by country of residence*persons*

	March			Absolute change	Percentage change
	2005	2006	2007	2007/2006	2007/2006
	Total	71,277	64,343	71,281	6,938
Austria	1,775	1,212	1,031	-181	-14.9
Belgium	1,316	1,532	990	-542	-35.4
France	3,193	3,033	4,034	1,001	33.0
Germany	8,896	9,601	10,077	476	5.0
Italy	5,669	4,406	6,289	1,883	42.7
Libya	607	791	945	154	19.5
Netherlands	1,270	1,343	1,704	361	26.9
Russia	255	433	534	101	23.3
Scandinavia*	4,256	2,943	3,502	559	19.0
Switzerland	1,367	1,433	1,799	366	25.5
United Kingdom	32,879	28,416	29,325	909	3.2
USA	862	1,335	1,168	-167	-12.5
Other	8,932	7,865	9,883	2,018	25.7

* Comprises Denmark, Finland, Norway and Sweden

Note: figures below 1,000 should be treated with caution

Table 7. Total nights spent by departing tourists, by country of residence

	March			<i>nights</i>	
				Absolute change	Percentage change
	2005	2006	2007	2007/2006	2007/2006
Total	713,713	593,401	599,771	6,370	1.1
Austria	10,878	7,790	6,991	-799	-10.3
Belgium	9,057	9,462	7,426	-2,036	-21.5
France	31,316	38,215	28,738	-9,477	-24.8
Germany	67,876	79,290	81,164	1,874	2.4
Italy	30,642	22,415	32,498	10,083	45.0
Libya	7,362	3,236	6,166	2,930	90.5
Netherlands	12,535	9,095	11,030	1,935	21.3
Russia	1,988	2,630	7,003	4,373	166.3
Scandinavia*	36,365	34,919	36,462	1,543	4.4
Switzerland	10,818	9,882	19,701	9,819	99.4
United Kingdom	356,845	304,275	281,346	-22,929	-7.5
USA	11,258	8,833	10,503	1,670	18.9
Other	126,773	63,359	70,743	7,384	11.7

Table 8. Total expenditure by departing tourists, by country of residence

	March			<i>Lm'000s</i>	
				Absolute change	Percentage change
	2005	2006	2007	2007/2006	2007/2006
Total	24,277.7	20,965.5	23,645.7	2,680.2	12.8
Austria	624.9	405.4	261.5	-143.9	-35.5
Belgium	454.9	458.8	327.8	-131.1	-28.6
France	1,194.5	991.9	1,246.1	254.3	25.6
Germany	2,976.3	2,959.2	3,324.3	365.1	12.3
Italy	1,775.8	1,178.5	1,641.7	463.3	39.3
Libya	190.3	302.8	282.1	-20.7	-6.8
Netherlands	380.4	461.0	481.8	20.7	4.5
Russia	86.4	200.3	289.1	88.8	44.3
Scandinavia*	1,487.1	1,154.6	1,337.4	182.8	15.8
Switzerland	503.1	586.1	774.0	187.8	32.0
United Kingdom	11,056.2	9,036.7	9,315.9	279.1	3.1
USA	392.5	531.0	434.2	-96.8	-18.2
Other	3,155.1	2,699.1	3,929.8	1,230.7	45.6

* Includes Denmark, Finland, Norway and Sweden

Note: refer to methodological note 4.

Methodological Notes

1. Tourist air departures are collected through a continuous survey carried out at the departure lounge of Malta International Airport. A two-stage sample design is used for this survey. At the first stage alternate days are selected. Then within each shift a sample of passengers is selected systematically. Personal interviews are carried out. Monthly response rates of around 90 per cent are achieved.
2. Tourist sea departures are collected through a regular survey that is carried out at the seaport. Ferry sailings on every alternate day are selected. Departing passengers are interviewed personally. On average a response rate of 93 per cent is recorded for this survey.
3. The variables collected in these surveys include the following:

Nationality	Number of nights stayed
Country of residence	Locality in Malta stayed longest
Flight/Sailing	Organisation of trip
Final destination	Form of transport used
Purpose of visit	Expenditure (package/non-package/other)
Frequency of visit	Age
Gender	

4. The expenditure data contained in this release should not be equated to national tourism earnings. Such expenditure includes elements that are earned by enterprises outside the Maltese economic territory.
5. The surveys carried out at the airport and the seaport are grossed up using the monthly passenger departures data in respect of each port after removing the number of transit passengers from the data sets. The monthly passenger departures data published by the Malta International Airport cannot be equated to tourism statistics because the former is inclusive of departing Maltese and transit passengers. As a result, the monthly tourism statistics published by the NSO are always lower than the combined passenger departures data available from the airport and seaport.

6. Definitions:

Usual Environment consists of the direct vicinity of his/her home and place of work and other places frequently visited

Visitors comprise tourists and same-day visitors. Visitors are distinguished from other travellers according to the following criteria:

- the trip should be to a place other than that of the usual environment;
- the stay in the place visited should not last more than 12 consecutive months;
- the main purpose of visit should be other than the exercise of an activity remunerated from within the place visited.

International tourist satisfies the criteria mentioned earlier regarding visitors. Additionally, international tourists must stay at least one night in a collective or private accommodation in the country visited.

International same-day visitor is an international visitor who does not spend at least one night in collective or private accommodation.

7. The data in this release are not normally subject to revision.