

News Release



Date: 10 March 2008
No. : 39/2008
Time of release: 11.00 hrs

Cut-off date for data presented:
5 March 2008

Theme:
Economy and Finance

Compiled by:

National Accounts Unit
Economic Statistics Division
email:nationalaccounts.nso@gov.mt
Tel: 25997259

The monthly calendar of NSO
News Releases may be
consulted on the Office's
website at www.nso.gov.mt

National Accounts

Gross Domestic Product for 2007

Provisional estimates indicate that the Gross Domestic Product (GDP) for 2007 reached €5.4 billion (Lm2.3 billion), an increase of 6.1 per cent when compared to 2006. Output exceeded the €10 billion mark. In real terms GDP grew by 3.8 per cent. Gross National Income at market prices went up by 8.1 per cent.

The Production Approach

During 2007 growth in value added was generated primarily by service activities: remote gaming activities; real estate, renting and business activities; transport, storage and communication; hotels and restaurants; public administration and health. Increases were also registered in manufacturing, in particular the manufacture of chemicals and chemical products. Declines were registered in agriculture, electricity and water supply, due to rising oil prices, and in financial intermediation, in particular international banking institutions', due to increases in other operating expenses. Tables 3 and 4 illustrate the generation of GDP by industry.

The Expenditure Approach

This approach indicates that GDP at constant prices went up by 3.8 per cent, as shown in Table 9. Total final consumption expenditure by households, by Non-Profit Institutions Serving Households (NPISHs) and by General Government went up by 2.3 per cent. Gross fixed capital formation at constant prices remained practically unchanged. Real exports and real imports of goods and services went down. Details on developments in Expenditure Approach components of GDP at current prices are found in Tables 5 to 8.

The Income Approach

The annual increase in GDP at current prices, amounting to €310.8 million (Lm133.4 million), is estimated to have been distributed into a €95.3 million (Lm40.9 million) rise in compensation of employees, a €191.5 million (Lm82.2 million) increase in gross operating surpluses of enterprises, and a €24.0 million (Lm10.3 million) addition in net taxation on production and imports, as shown in Table 1.

Gross National Income

Considering the effects of income and taxation paid and received by residents to and from the rest of the world, Gross National Income (GNI) at market prices is estimated at €5.2 billion (Lm2.2 billion), up by 8.1 per cent over 2006. ■

Gross Domestic Product (GDP) is an estimate of the value of goods and services produced in the economy over a period of time. The GDP is estimated at current prices using the Production Approach, aggregating the output of the various productive sectors net of the cost of intermediate inputs. The Expenditure Approach is reconciled with the Production Approach and is used to derive an estimate of GDP at constant prices, in other words, excluding the effects of price inflation on market prices. The Income Approach shows how GDP at market prices is distributed into compensation of employees, operating surpluses of enterprises and taxes on production and imports net of subsidies. GDP per capita is derived by dividing GDP by the average total population (i.e. including residents who are not Maltese nationals) for the period under review.

European statistics comparable to data in this News Release are available at:

[EUROSTAT Website/Homepage/Economy&Finance/data](http://ec.europa.eu/eurostat/homepage/economy&finance/data)

- >Economy & Finance
 - >National Accounts (including GDP)
 - >Quarterly National Accounts

For further assistance send a request from:

http://www.nso.gov.mt/adhoc/adhoc_contact_details.aspx

National Statistics Office
Library & Information Unit
Lascaris, Valletta VLT 2000, Malta
Tel:(+356) 25997219
Fax: (+356) 25997205
e-mail: nso@gov.mt
<http://www.nso.gov.mt>

Table 1. GDP and GNI (ESA 95) ...

Lm'000

ESA 95 Code	2004					2005					2006					2007				
	Q1	Q2	Q3	Q4	Total	Q1	Q2	Q3	Q4	Total	Q1	Q2	Q3	Q4	Total	Q1	Q2	Q3	Q4	Total
PRODUCTION APPROACH																				
P.1	825,549	875,224	940,646	887,621	3,529,039	821,388	934,721	994,421	971,507	3,722,036	923,477	1,030,605	1,110,283	1,087,561	4,151,926	978,014	1,074,850	1,165,596	1,119,408	4,337,867
P.2	433,405	458,931	503,767	468,193	1,864,295	421,062	489,722	529,260	521,108	1,961,153	499,801	561,722	620,474	606,079	2,288,077	524,728	576,463	641,024	615,914	2,358,128
B.1g	392,143	416,293	436,879	419,429	1,664,744	400,325	444,999	465,161	450,399	1,760,884	423,676	468,883	489,809	481,481	1,863,849	453,286	498,387	524,572	503,494	1,979,739
D.21	61,307	62,940	66,269	79,390	269,906	67,011	68,301	79,968	81,869	297,149	72,904	79,333	83,615	86,891	322,743	78,081	82,155	84,632	95,021	339,889
D.31	3,602	1,894	3,556	4,622	13,674	5,373	1,842	2,629	3,592	13,436	1,822	1,874	3,311	4,518	11,525	2,969	2,942	2,466	2,766	11,143
B.1*g	449,848	477,339	499,592	494,197	1,920,976	461,963	511,458	542,500	528,676	2,044,597	494,758	546,342	570,113	563,854	2,175,067	528,398	577,600	606,738	595,749	2,308,485
EXPENDITURE APPROACH																				
P.3	403,785	403,883	421,015	448,125	1,676,808	405,618	430,333	439,260	466,986	1,742,197	418,078	441,423	461,876	488,955	1,810,332	431,655	462,146	479,990	503,114	1,876,905
P.3	292,332	296,636	315,192	337,441	1,241,601	300,222	317,600	329,611	350,537	1,297,970	305,326	326,856	344,193	363,306	1,339,681	318,057	342,413	356,838	375,231	1,392,539
P.3	8,400	8,592	8,347	8,587	33,926	8,709	8,953	8,813	8,949	35,424	8,979	9,307	9,276	9,265	36,827	9,309	9,574	9,022	9,304	37,209
P.3	103,053	98,655	97,476	102,097	401,281	96,687	103,780	100,836	107,500	408,803	103,773	105,260	108,407	116,384	433,824	104,289	110,159	114,130	118,579	447,157
P.5	58,361	93,628	49,808	115,989	317,786	98,016	107,632	77,749	128,284	411,681	134,051	144,413	84,366	87,901	450,731	105,890	121,302	97,421	153,460	478,073
P.51	86,116	94,492	94,369	94,918	369,895	89,403	105,893	96,171	106,431	397,898	120,159	97,235	101,788	104,842	424,024	110,412	107,478	111,840	101,416	431,146
P.52	-27,973	-1,082	-44,779	20,853	-52,981	8,562	1,688	-18,473	21,802	13,579	14,251	47,537	-17,062	-16,581	28,145	-4,454	15,079	-12,406	49,801	48,202
P.53	218	218	218	218	872	51	51	51	51	204	-360	-360	-360	-360	-1,438	-68	-1,255	-2,013	2,243	-1,093
P.6	344,190	390,739	426,984	365,172	1,527,085	332,656	402,260	443,327	410,313	1,588,556	400,250	477,389	521,585	505,894	1,905,118	452,767	509,015	561,938	489,800	2,013,520
P.7	356,488	410,911	398,215	435,089	1,600,703	374,327	428,767	417,836	476,907	1,697,837	457,621	516,883	497,714	518,896	1,991,114	461,914	514,863	532,611	550,625	2,060,013
B.1*g	449,848	477,339	499,592	494,197	1,920,976	461,963	511,458	542,500	528,676	2,044,597	494,758	546,342	570,113	563,854	2,175,067	528,398	577,600	606,738	595,749	2,308,485
INCOME APPROACH																				
D.1	218,288	220,227	221,520	224,320	884,355	222,966	229,772	230,854	230,185	913,778	234,288	239,225	239,825	241,324	954,662	240,929	249,429	251,572	253,638	995,568
B.2g+B.3g	170,996	203,790	212,775	200,561	788,121	180,453	221,041	235,909	226,822	864,225	190,965	236,511	251,507	247,408	926,392	216,001	254,013	279,013	259,575	1,008,602
D.2	67,489	64,389	72,135	81,421	285,434	69,492	72,051	82,603	84,848	308,994	76,268	82,865	86,302	89,287	334,722	80,919	84,476	87,440	98,471	351,306
D.3	6,924	11,063	6,839	12,098	36,924	10,948	11,405	6,868	13,178	42,399	6,762	12,256	7,519	14,161	40,698	9,452	10,316	11,287	15,933	46,988
B.1*g	449,848	477,339	499,592	494,197	1,920,976	461,963	511,458	542,500	528,676	2,044,597	494,758	546,342	570,113	563,854	2,175,067	528,398	577,600	606,738	595,749	2,308,485
D.1	2,812	2,781	2,900	2,759	11,252	2,870	3,048	2,815	2,751	11,484	2,977	2,847	3,052	2,820	11,696	2,909	3,583	2,976	2,898	12,366
D.1	1,178	1,298	1,457	1,527	5,460	1,662	2,160	1,699	1,996	7,517	2,811	2,896	2,956	3,112	11,775	3,208	3,272	3,296	3,549	13,325
D.2	0	1,446	2,203	2,299	5,948	2,401	2,554	2,373	2,364	9,692	1,996	2,507	2,317	2,568	9,388	2,665	2,310	2,635	3,095	10,705
D.3	0	0	0	1,290	1,290	605	1,077	3	144	1,829	179	319	2,321	1,146	3,965	1,192	495	783	1,067	3,537
D.4	79,263	80,976	79,014	85,690	324,943	88,388	95,774	98,769	123,672	406,603	135,380	143,575	170,366	166,092	615,413	181,860	205,456	218,007	219,643	824,966
D.4	76,067	104,951	81,340	87,035	349,393	107,426	117,416	116,747	154,675	496,264	180,046	166,614	187,835	172,169	706,664	204,876	222,520	232,338	219,032	878,766
B.5*g	454,678	453,401	496,506	493,075	1,897,660	442,337	489,227	523,268	496,208	1,951,040	448,441	521,066	552,744	556,063	2,078,314	503,610	559,032	590,235	593,681	2,246,558

... Table 1. GDP and GNI (ESA 95)

€'000

ESA 95 Code	2004					2005					2006					2007				
	Q1	Q2	Q3	Q4	Total	Q1	Q2	Q3	Q4	Total	Q1	Q2	Q3	Q4	Total	Q1	Q2	Q3	Q4	Total
PRODUCTION APPROACH																				
P.1	1,923,011	2,038,723	2,191,115	2,067,601	8,220,450	1,913,318	2,177,315	2,316,377	2,263,003	8,670,013	2,151,122	2,400,663	2,586,265	2,533,335	9,671,386	2,278,160	2,503,726	2,715,108	2,607,519	10,104,513
P.2	1,009,562	1,069,021	1,173,460	1,090,595	4,342,639	980,812	1,140,745	1,232,844	1,213,856	4,568,257	1,164,224	1,308,461	1,445,316	1,411,785	5,329,787	1,222,287	1,342,797	1,493,185	1,434,693	5,492,961
B.1g	913,449	969,703	1,017,654	977,006	3,877,811	932,507	1,036,569	1,083,533	1,049,147	4,101,756	986,898	1,092,202	1,140,948	1,121,550	4,341,599	1,055,873	1,160,930	1,221,924	1,172,826	4,611,552
D.21	142,807	146,611	154,365	184,929	628,712	156,094	159,099	186,275	190,703	692,171	169,821	184,796	194,771	202,402	751,789	181,880	191,370	197,140	221,339	791,728
D.31	8,390	4,412	8,283	10,766	31,852	12,516	4,291	6,124	8,367	31,297	4,244	4,365	7,713	10,524	26,846	6,916	6,853	5,744	6,443	25,956
B.1*g	1,047,865	1,111,901	1,163,736	1,151,168	4,474,671	1,076,085	1,191,377	1,263,685	1,231,483	4,762,630	1,152,475	1,272,633	1,328,006	1,313,427	5,066,542	1,230,837	1,345,446	1,413,319	1,387,722	5,377,324
EXPENDITURE APPROACH																				
P.3	940,566	940,794	980,701	1,043,850	3,905,912	944,836	1,002,406	1,023,201	1,087,785	4,058,227	973,860	1,028,239	1,075,882	1,138,959	4,216,939	1,005,486	1,076,511	1,118,076	1,171,940	4,372,013
P.3	680,950	690,976	734,200	786,026	2,892,152	699,329	739,809	767,787	816,532	3,023,457	711,218	761,370	801,754	846,275	3,120,617	740,874	797,608	831,209	874,053	3,243,743
P.3	19,567	20,014	19,443	20,002	79,026	20,287	20,855	20,529	20,846	82,516	20,915	21,679	21,607	21,582	85,784	21,684	22,301	21,016	21,672	86,674
P.3	240,049	229,804	227,058	237,822	934,733	225,220	241,742	234,885	250,408	952,255	241,726	245,190	252,520	271,102	1,010,538	242,928	256,601	265,851	276,215	1,041,596
P.5	135,946	218,095	116,021	270,181	740,243	228,316	250,716	181,106	298,821	958,958	312,254	336,391	196,520	204,755	1,049,920	246,658	282,558	226,929	357,466	1,113,611
P.51	200,596	220,107	219,821	221,099	861,624	208,253	246,664	224,018	247,918	926,853	279,895	226,497	237,102	244,216	987,710	257,191	250,356	260,517	236,236	1,004,300
P.52	-65,159	-2,520	-104,307	48,573	-123,412	19,944	3,932	-43,031	50,784	31,630	33,196	110,731	-39,745	-38,624	65,559	-10,374	35,125	-28,899	116,005	111,857
P.53	508	508	508	508	2,031	119	119	119	119	475	-837	-837	-837	-837	-3,350	-158	-2,923	-4,689	5,225	-2,546
P.6	801,747	910,177	994,605	850,622	3,557,151	774,880	937,014	1,032,674	955,772	3,700,340	932,332	1,112,017	1,214,966	1,178,416	4,437,731	1,054,663	1,185,686	1,308,963	1,140,927	4,690,240
P.7	830,394	957,165	927,591	1,013,485	3,728,635	871,947	998,758	973,296	1,110,894	3,954,896	1,065,970	1,204,014	1,159,362	1,208,703	4,638,048	1,075,970	1,199,308	1,240,650	1,282,611	4,798,539
B.1*g	1,047,865	1,111,901	1,163,736	1,151,168	4,474,671	1,076,085	1,191,377	1,263,685	1,231,483	4,762,630	1,152,475	1,272,633	1,328,006	1,313,427	5,066,542	1,230,837	1,345,446	1,413,319	1,387,722	5,377,324
INCOME APPROACH																				
D.1	508,474	512,991	516,002	522,525	2,059,993	519,371	535,225	537,746	536,187	2,128,529	545,744	557,244	558,642	562,134	2,223,764	561,213	581,012	586,006	590,819	2,319,051
B.2g+B.3g	398,313	474,703	495,633	467,181	1,835,829	420,343	514,887	549,521	528,352	2,013,103	444,830	550,922	585,854	576,306	2,157,912	503,146	591,692	649,926	604,646	2,349,410
D.2	157,207	149,986	168,029	189,660	664,882	161,873	167,834	192,413	197,643	719,762	177,657	193,024	201,030	207,983	779,693	188,491	196,776	203,680	229,376	818,323
D.3	16,129	25,770	15,931	28,181	86,010	25,502	26,567	15,998	30,696	98,763	15,751	28,549	17,515	32,986	94,801	22,017	24,030	26,292	37,114	109,453
B.1*g	1,047,865	1,111,901	1,163,736	1,151,168	4,474,671	1,076,085	1,191,377	1,263,685	1,231,483	4,762,630	1,152,475	1,272,633	1,328,006	1,313,427	5,066,542	1,230,837	1,345,446	1,413,319	1,387,722	5,377,324
D.1	6,550	6,478	6,755	6,427	26,210	6,685	7,100	6,557	6,408	26,751	6,935	6,632	7,109	6,569	27,244	6,776	8,346	6,932	6,751	28,805
D.1	2,744	3,024	3,394	3,557	12,718	3,871	5,031	3,958	4,649	17,510	6,548	6,746	6,886	7,249	27,428	7,473	7,622	7,678	8,267	31,039
D.2	0	3,368	5,132	5,355	13,855	5,593	5,949	5,528	5,507	22,576	4,649	5,840	5,397	5,982	21,868	6,208	5,381	6,138	7,209	24,936
D.3	0	0	0	3,005	3,005	1,409	2,509	7	335	4,260	417	743	5,406	2,669	9,236	2,777	1,153	1,824	2,485	8,239
D.4	184,633	188,623	184,053	199,604	756,914	205,889	223,093	230,070	288,078	947,130	315,351	334,440	396,846	386,890	1,433,527	423,620	478,584	507,820	511,631	1,921,654
D.4	177,188	244,470	189,471	202,737	813,867	250,235	273,506	271,947	360,296	1,155,984	419,394	388,106	437,538	401,046	1,646,084	477,233	518,332	541,202	510,207	2,046,974
B.5*g	1,059,116	1,056,141	1,156,548	1,148,555	4,420,359	1,030,368	1,139,593	1,218,886	1,155,853	4,544,700	1,044,585	1,213,756	1,287,547	1,295,279	4,841,168	1,173,097	1,302,194	1,374,877	1,382,905	5,233,073

Table 2. Analysis of Gross Value Added by Industry (A31) ...

Lm'000

		2004			2005			2006			2007		
		P.1	P.2	B.1*g	P.1	P.2	B.1*g	P.1	P.2	B.1*g	P.1	P.2	B.1*g
AA	Agriculture, hunting and forestry	66,122	29,281	36,841	66,805	29,904	36,901	67,716	30,235	37,481	65,782	31,756	34,026
BB	Fishing	29,113	18,113	11,000	29,222	18,240	10,982	38,691	24,433	14,258	32,543	17,813	14,730
CA	Mining and quarrying of energy producing materials	4,011	2,903	1,108	4,367	3,166	1,201	3,036	2,190	846	1,869	1,338	531
CB	Mining and quarrying except energy producing materials	7,411	3,095	4,316	7,896	3,300	4,596	8,646	3,611	5,035	8,905	3,714	5,191
DA	Manufacture of food products; beverages and tobacco	153,810	105,492	48,318	153,050	104,906	48,144	151,533	103,326	48,207	142,412	98,125	44,287
DB	Manufacture of textiles and textile products	55,234	31,216	24,018	57,023	33,160	23,863	43,969	26,584	17,385	38,153	23,186	14,967
DC	Manufacture of leather and leather products	8,594	5,664	2,930	5,713	3,941	1,772	3,052	2,047	1,005	2,466	1,697	769
DD	Manufacture of wood and wood products	2,179	1,197	982	2,525	1,382	1,143	2,232	1,220	1,012	2,387	1,308	1,079
DE	Manufacture of pulp, paper and paper products; publishing and printing	71,448	45,660	25,788	69,590	43,752	25,838	73,578	45,990	27,588	80,878	50,497	30,381
DF	Manufacture of coke, refined petroleum products and nuclear fuel	<i>included with DG</i>			<i>included with DG</i>			<i>included with DG</i>			<i>included with DG</i>		
DG	Manufacture of chemicals, chemical products and man-made fibres	36,800	24,981	11,819	55,020	29,104	25,916	71,948	35,917	36,031	95,897	47,911	47,986
DH	Manufacture of rubber and plastic products	38,831	20,299	18,532	38,243	20,969	17,274	38,845	21,333	17,512	46,071	25,469	20,602
DI	Manufacture of other non-metallic mineral products	29,073	17,720	11,353	32,722	19,988	12,734	33,274	20,345	12,929	33,561	20,483	13,078
DJ	Manufacture of basic metals and fabricated metal products	28,015	17,575	10,440	32,911	21,202	11,709	32,073	20,346	11,727	32,915	21,218	11,697
DK	Manufacture of machinery and equipment n.e.c.	14,112	9,139	4,973	17,585	11,519	6,066	18,314	12,040	6,274	19,227	12,724	6,503
DL	Manufacture of electrical and optical equipment	544,549	461,917	82,632	478,012	400,983	77,029	561,692	484,061	77,631	531,063	452,205	78,858
DM	Manufacture of transport equipment	21,011	14,199	6,812	35,990	23,570	12,420	45,595	35,485	10,110	42,584	31,595	10,989
DN	Manufacturing n.e.c.	78,029	36,740	41,289	77,520	36,884	40,636	77,803	37,370	40,433	79,218	38,340	40,878
EE	Electricity, gas and water supply	153,963	131,244	22,719	186,032	170,476	15,556	227,209	211,316	15,893	228,647	217,240	11,407
FF	Construction	154,966	88,033	66,933	161,630	92,677	68,953	175,078	102,061	73,017	179,835	104,880	74,955
GG	Wholesale and retail trade; repair of motor vehicles, motorcycles and personal and household goods	296,618	80,452	216,166	321,224	88,228	232,996	328,257	94,114	234,143	335,221	96,137	239,084
HH	Hotels and restaurants	232,705	127,926	104,779	234,546	130,751	103,795	234,826	134,328	100,498	249,837	141,833	108,004
II	Transport, storage and communication	377,459	210,784	166,675	393,115	219,689	173,426	419,239	239,758	179,481	442,705	253,154	189,552
JJ	Financial intermediation	172,622	104,631	67,991	201,718	114,316	87,402	217,308	122,652	94,656	227,725	145,740	81,985
KK	Real estate, renting and business activities	354,938	99,105	255,833	383,296	113,114	270,182	443,927	141,806	302,121	488,111	154,276	333,835
LL	Public administration and defence; compulsory social security	186,352	60,985	125,367	187,690	62,110	125,580	193,720	66,407	127,313	206,848	71,669	135,179
MM	Education	126,330	19,184	107,146	130,016	19,122	110,894	134,800	21,619	113,181	140,748	23,682	117,066
NN	Health and social work	132,363	32,120	100,243	136,575	31,294	105,281	149,615	39,110	110,505	154,651	38,128	116,523
OO	Other community, social and personal service activities	149,564	64,607	84,957	219,100	113,373	105,727	352,942	208,340	144,602	424,516	231,978	192,538
PP	Private households with employed persons	2,817	30	2,786	2,900	33	2,867	3,009	32	2,977	3,092	31	3,061
Total Economy		3,529,039	1,864,295	1,664,744	3,722,036	1,961,153	1,760,884	4,151,926	2,288,077	1,863,849	4,337,867	2,358,128	1,979,739

... Table 2. Analysis of Gross Value Added by Industry (A31)

€'000

		2004			2005			2006			2007		
		P.1	P.2	B.1*g	P.1	P.2	B.1*g	P.1	P.2	B.1*g	P.1	P.2	B.1*g
AA	Agriculture, hunting and forestry	154,023	68,207	85,816	155,614	69,658	85,956	157,736	70,429	87,306	153,231	73,972	79,259
BB	Fishing	67,815	42,192	25,623	68,069	42,488	25,581	90,126	56,914	33,212	75,805	41,493	34,312
CA	Mining and quarrying of energy producing materials	9,343	6,763	2,580	10,172	7,374	2,798	7,072	5,102	1,970	4,354	3,116	1,237
CB	Mining and quarrying except energy producing materials	17,263	7,209	10,054	18,393	7,687	10,705	20,140	8,411	11,729	20,743	8,651	12,092
DA	Manufacture of food products; beverages and tobacco	358,281	245,730	112,551	356,511	244,364	112,146	352,977	240,685	112,292	331,731	228,570	103,161
DB	Manufacture of textiles and textile products	128,661	72,713	55,948	132,828	77,242	55,586	102,420	61,925	40,495	88,873	54,009	34,863
DC	Manufacture of leather and leather products	20,019	13,194	6,824	13,308	9,180	4,128	7,109	4,768	2,342	5,744	3,952	1,792
DD	Manufacture of wood and wood products	5,076	2,788	2,288	5,882	3,218	2,664	5,199	2,843	2,356	5,560	3,047	2,513
DE	Manufacture of pulp, paper and paper products; publishing and printing	166,429	106,360	60,069	162,101	101,915	60,186	171,391	107,129	64,262	188,395	117,626	70,769
DF	Manufacture of coke, refined petroleum products and nuclear fuel	<i>included with DG</i>			<i>included with DG</i>			<i>included with DG</i>			<i>included with DG</i>		
DG	Manufacture of chemicals, chemical products and man-made fibres	85,721	58,189	27,532	128,162	67,795	60,367	167,594	83,664	83,930	223,380	111,602	111,778
DH	Manufacture of rubber and plastic products	90,452	47,285	43,167	89,082	48,846	40,237	90,485	49,692	40,793	107,317	59,328	47,989
DI	Manufacture of other non-metallic mineral products	67,722	41,277	26,445	76,222	46,559	29,663	77,508	47,391	30,116	78,176	47,714	30,463
DJ	Manufacture of basic metals and fabricated metal products	65,257	40,939	24,319	76,662	49,386	27,276	74,710	47,392	27,318	76,671	49,425	27,246
DK	Manufacture of machinery and equipment n.e.c.	32,872	21,288	11,584	40,962	26,832	14,130	42,660	28,046	14,614	44,787	29,640	15,147
DL	Manufacture of electrical and optical equipment	1,268,458	1,075,978	192,480	1,113,468	934,039	179,430	1,308,390	1,127,558	180,832	1,237,044	1,053,355	183,689
DM	Manufacture of transport equipment	48,942	33,075	15,867	83,834	54,904	28,931	106,208	82,658	23,550	99,194	73,597	25,597
DN	Manufacturing n.e.c.	181,759	85,581	96,178	180,573	85,915	94,658	181,232	87,048	94,184	184,528	89,308	95,220
EE	Electricity, gas and water supply	358,637	305,715	52,922	433,338	397,103	36,235	529,255	492,233	37,022	532,604	506,033	26,571
FF	Construction	360,974	205,063	155,911	376,497	215,880	160,616	407,822	237,739	170,083	418,903	244,304	174,599
GG	Wholesale and retail trade; repair of motor vehicles, motorcycles and personal and household goods	690,934	187,403	503,531	748,251	205,515	542,735	764,633	219,227	545,406	780,855	223,939	556,916
HH	Hotels and restaurants	542,057	297,988	244,069	546,345	304,568	241,777	546,997	312,901	234,096	581,964	330,382	251,582
II	Transport, storage and communication	879,243	490,994	388,248	915,712	511,739	403,973	976,563	558,486	418,077	1,031,226	589,689	441,536
JJ	Financial intermediation	402,101	243,725	158,376	469,877	266,285	203,592	506,191	285,702	220,489	530,457	339,483	190,974
KK	Real estate, renting and business activities	826,783	230,852	595,931	892,840	263,484	629,355	1,034,071	330,319	703,752	1,136,993	359,366	777,626
LL	Public administration and defence; compulsory social security	434,083	142,057	292,027	437,200	144,677	292,523	451,246	154,687	296,560	481,826	166,944	314,882
MM	Education	294,270	44,687	249,583	302,856	44,542	258,314	314,000	50,360	263,640	327,855	55,164	272,690
NN	Health and social work	308,324	74,821	233,503	318,134	72,895	245,239	348,509	91,101	257,408	360,240	88,814	271,426
OO	Other community, social and personal service activities	348,391	150,495	197,897	510,366	264,087	246,278	822,134	485,302	336,831	988,856	540,363	448,493
PP	Private households with employed persons	6,561	71	6,490	6,756	78	6,678	7,008	74	6,934	7,203	72	7,131
Total Economy		8,220,450	4,342,639	3,877,811	8,670,013	4,568,257	4,101,756	9,671,386	5,329,787	4,341,599	10,104,513	5,492,961	4,611,552

Table 3. Sectoral Annual GDP according to NACE A17 Classification ...

Production account		A - Agriculture, Hunting and Forestry							
		2004	2005	2006	2007	2004	2005	2006	2007
ESA 95	Code	Lm'000	Lm'000	Lm'000	Lm'000	€'000	€'000	€'000	€'000
P.1	Output	66,122	66,805	67,716	65,782	154,023	155,614	157,736	153,231
P.2	Intermediate consumption	29,281	29,904	30,235	31,756	68,207	69,658	70,429	73,972
B.1g	Value added, gross	36,841	36,901	37,481	34,026	85,816	85,956	87,306	79,259
K.1	Consumption of fixed capital	1,982	2,269	2,284	2,284	4,617	5,285	5,321	5,320
B.1n	Value added, net	34,858	34,632	35,196	31,742	81,198	80,671	81,985	73,938
Generation of income account									
B.1n	Value added, net	34,858	34,632	35,196	31,742	81,198	80,671	81,985	73,938
D.1	Compensation of employees	10,212	11,113	10,364	8,764	23,788	25,886	24,142	20,415
D.29	Other taxes on production	387	757	751	690	901	1,763	1,749	1,607
D.39	Other subsidies on production (-)	2,421	2,952	2,929	2,409	5,639	6,876	6,823	5,611
B.2	Operating surplus	26,680	25,714	27,010	24,697	62,149	59,897	62,917	57,528

Production account		B - Fishing							
		2004	2005	2006	2007	2004	2005	2006	2007
ESA 95	Code	Lm'000	Lm'000	Lm'000	Lm'000	€'000	€'000	€'000	€'000
P.1	Output	29,113	29,222	38,691	32,543	67,815	68,069	90,126	75,805
P.2	Intermediate consumption	18,113	18,240	24,433	17,813	42,192	42,488	56,914	41,493
B.1g	Value added, gross	11,000	10,982	14,258	14,730	25,623	25,581	33,212	34,312
K.1	Consumption of fixed capital	1,254	1,497	1,564	1,641	2,920	3,488	3,644	3,822
B.1n	Value added, net	9,746	9,484	12,693	13,089	22,703	22,093	29,568	30,490
Generation of income account									
B.1n	Value added, net	9,746	9,484	12,693	13,089	22,703	22,093	29,568	30,490
D.1	Compensation of employees	1,071	1,274	1,675	2,343	2,495	2,968	3,902	5,458
D.29	Other taxes on production	51	111	123	113	119	259	287	263
D.39	Other subsidies on production (-)	3	3	51	23	7	7	119	54
B.2	Operating surplus	8,627	8,102	10,946	10,656	20,096	18,873	25,498	24,823

Production account		C - Mining and Quarrying							
		2004	2005	2006	2007	2004	2005	2006	2007
ESA 95	Code	Lm'000	Lm'000	Lm'000	Lm'000	€'000	€'000	€'000	€'000
P.1	Output	11,422	12,263	11,682	10,774	26,606	28,565	27,212	25,097
P.2	Intermediate consumption	5,998	6,466	5,801	5,052	13,973	15,061	13,513	11,767
B.1g	Value added, gross	5,424	5,797	5,881	5,722	12,634	13,504	13,699	13,329
K.1	Consumption of fixed capital	349	401	422	430	813	935	982	1,001
B.1n	Value added, net	5,075	5,396	5,459	5,293	11,821	12,569	12,717	12,329
Generation of income account									
B.1n	Value added, net	5,075	5,396	5,459	5,293	11,821	12,569	12,717	12,329
D.1	Compensation of employees	1,826	1,909	1,994	1,886	4,253	4,447	4,645	4,393
D.29	Other taxes on production	9	16	15	12	21	37	35	28
D.39	Other subsidies on production (-)	0	0	0	0	0	0	0	0
B.2	Operating surplus	3,240	3,471	3,450	3,395	7,546	8,085	8,037	7,907

Production account		D - Manufacturing							
		2004	2005	2006	2007	2004	2005	2006	2007
ESA 95	Code	Lm'000	Lm'000	Lm'000	Lm'000	€'000	€'000	€'000	€'000
P.1	Output	1,081,685	1,055,904	1,153,908	1,146,832	2,519,648	2,459,595	2,687,883	2,671,400
P.2	Intermediate consumption	791,800	751,359	846,064	824,760	1,844,397	1,750,195	1,970,798	1,921,174
B.1g	Value added, gross	289,885	304,545	307,844	322,072	675,251	709,400	717,084	750,226
K.1	Consumption of fixed capital	59,955	70,911	68,444	63,775	139,659	165,179	159,432	148,556
B.1n	Value added, net	229,930	233,634	239,400	258,297	535,592	544,221	557,653	601,670
Generation of income account									
B.1n	Value added, net	229,930	233,634	239,400	258,297	535,592	544,221	557,653	601,670
D.1	Compensation of employees	167,849	172,593	174,511	178,638	390,983	402,034	406,501	416,115
D.29	Other taxes on production	386	751	734	674	899	1,749	1,710	1,570
D.39	Other subsidies on production (-)	9,225	9,573	7,172	5,037	21,488	22,299	16,706	11,733
B.2	Operating surplus	70,920	69,863	71,327	84,022	165,199	162,737	166,148	195,719

... Table 3. Sectoral Annual GDP according to NACE A17 Classification

Production account		E - Electricity, Gas and Water Supply							
		2004	2005	2006	2007	2004	2005	2006	2007
ESA 95	Code	Lm'000	Lm'000	Lm'000	Lm'000	€'000	€'000	€'000	€'000
P.1	Output	153,963	186,032	227,209	228,647	358,637	433,338	529,255	532,604
P.2	Intermediate consumption	131,244	170,476	211,316	217,240	305,715	397,103	492,233	506,033
B.1g	Value added, gross	22,719	15,556	15,893	11,407	52,922	36,235	37,022	26,571
K.1	Consumption of fixed capital	14,466	15,642	15,774	16,321	33,698	36,436	36,744	38,018
B.1n	Value added, net	8,253	-86	119	-4,914	19,224	-201	278	-11,448
Generation of income account									
B.1n	Value added, net	8,253	-86	119	-4,914	19,224	-201	278	-11,448
D.1	Compensation of employees	20,920	20,585	20,381	20,741	48,730	47,950	47,475	48,314
D.29	Other taxes on production	213	185	180	180	496	431	419	419
D.39	Other subsidies on production (-)	1,883	1,883	4,383	14,534	4,386	4,386	10,210	33,855
B.2	Operating surplus	-10,997	-18,973	-16,059	-11,301	-25,616	-44,196	-37,407	-26,325

Production account		F - Construction							
		2004	2005	2006	2007	2004	2005	2006	2007
ESA 95	Code	Lm'000	Lm'000	Lm'000	Lm'000	€'000	€'000	€'000	€'000
P.1	Output	154,966	161,630	175,078	179,835	360,974	376,497	407,822	418,903
P.2	Intermediate consumption	88,033	92,677	102,061	104,880	205,063	215,880	237,739	244,304
B.1g	Value added, gross	66,933	68,953	73,017	74,955	155,911	160,616	170,083	174,599
K.1	Consumption of fixed capital	10,362	10,785	11,646	11,836	24,137	25,122	27,128	27,570
B.1n	Value added, net	56,571	58,168	61,371	63,119	131,774	135,495	142,955	147,029
Generation of income account									
B.1n	Value added, net	56,571	58,168	61,371	63,119	131,774	135,495	142,955	147,029
D.1	Compensation of employees	34,502	35,924	37,545	38,797	80,368	83,680	87,456	90,373
D.29	Other taxes on production	438	886	908	835	1,020	2,064	2,115	1,945
D.39	Other subsidies on production (-)	0	0	0	0	0	0	0	0
B.2	Operating surplus	21,631	21,358	22,918	23,487	50,386	49,751	53,384	54,711

Production account		G - Wholesale and Retail Trade; Repair of Motor Vehicles, Motorcycles and Personal and Household Goods							
		2004	2005	2006	2007	2004	2005	2006	2007
ESA 95	Code	Lm'000	Lm'000	Lm'000	Lm'000	€'000	€'000	€'000	€'000
P.1	Output	296,618	321,224	328,257	335,221	690,934	748,251	764,633	780,855
P.2	Intermediate consumption	80,452	88,228	94,114	96,137	187,403	205,515	219,227	223,939
B.1g	Value added, gross	216,166	232,996	234,143	239,084	503,531	542,735	545,406	556,916
K.1	Consumption of fixed capital	15,124	18,245	19,347	20,130	35,229	42,500	45,067	46,889
B.1n	Value added, net	201,042	214,751	214,795	218,954	468,302	500,235	500,339	510,026
Generation of income account									
B.1n	Value added, net	201,042	214,751	214,795	218,954	468,302	500,235	500,339	510,026
D.1	Compensation of employees	84,705	90,136	92,758	95,831	197,310	209,960	216,068	223,226
D.29	Other taxes on production	2,000	3,344	3,397	3,104	4,659	7,789	7,913	7,230
D.39	Other subsidies on production (-)	0	1,800	2,100	2,100	0	4,193	4,892	4,892
B.2	Operating surplus	114,337	123,071	120,740	122,119	266,334	286,678	281,249	284,462

Production account		H - Hotels and Restaurants							
		2004	2005	2006	2007	2004	2005	2006	2007
ESA 95	Code	Lm'000	Lm'000	Lm'000	Lm'000	€'000	€'000	€'000	€'000
P.1	Output	232,705	234,546	234,826	249,837	542,057	546,345	546,997	581,964
P.2	Intermediate consumption	127,926	130,751	134,328	141,833	297,988	304,568	312,901	330,382
B.1g	Value added, gross	104,779	103,795	100,498	108,004	244,069	241,777	234,096	251,582
K.1	Consumption of fixed capital	21,398	24,292	24,245	26,062	49,843	56,586	56,476	60,708
B.1n	Value added, net	83,381	79,503	76,252	81,942	194,226	185,191	177,620	190,874
Generation of income account									
B.1n	Value added, net	83,381	79,503	76,252	81,942	194,226	185,191	177,620	190,874
D.1	Compensation of employees	60,403	61,583	63,832	67,878	140,701	143,450	148,689	158,113
D.29	Other taxes on production	454	429	445	412	1,058	999	1,037	960
D.39	Other subsidies on production (-)	17	14	15	5	40	33	35	12
B.2	Operating surplus	22,541	17,505	11,990	13,657	52,507	40,775	27,930	31,813

... Table 3. Sectoral Annual GDP according to NACE A17 Classification

Production account		I - Transport, Storage and Communication							
		2004	2005	2006	2007	2004	2005	2006	2007
ESA 95	Code	Lm'000	Lm'000	Lm'000	Lm'000	€'000	€'000	€'000	€'000
P.1	Output	377,459	393,115	419,239	442,705	879,243	915,712	976,563	1,031,226
P.2	Intermediate consumption	210,784	219,689	239,758	253,154	490,994	511,739	558,486	589,689
B.1g	Value added, gross	166,675	173,426	179,481	189,552	388,248	403,973	418,077	441,536
K.1	Consumption of fixed capital	49,506	30,997	34,213	37,906	115,318	72,204	79,694	88,296
B.1n	Value added, net	117,169	142,428	145,268	151,646	272,931	331,769	338,383	353,240
Generation of income account									
B.1n	Value added, net	117,169	142,428	145,268	151,646	272,931	331,769	338,383	353,240
D.1	Compensation of employees	83,084	83,661	84,448	83,688	193,533	194,877	196,711	194,940
D.29	Other taxes on production	1,879	1,887	1,756	2,020	4,377	4,396	4,090	4,705
D.39	Other subsidies on production (-)	9,218	11,340	10,427	10,478	21,472	26,415	24,288	24,407
B.2	Operating surplus	41,425	68,221	69,491	76,416	96,493	158,912	161,871	178,002

Production account		J - Financial Intermediation							
		2004	2005	2006	2007	2004	2005	2006	2007
ESA 95	Code	Lm'000	Lm'000	Lm'000	Lm'000	€'000	€'000	€'000	€'000
P.1	Output	172,622	201,718	217,308	227,725	402,101	469,877	506,191	530,457
P.2	Intermediate consumption	104,631	114,316	122,652	145,740	243,725	266,285	285,702	339,483
B.1g	Value added, gross	67,991	87,402	94,656	81,985	158,376	203,592	220,489	190,974
K.1	Consumption of fixed capital	7,710	7,875	8,525	9,179	17,960	18,343	19,857	21,380
B.1n	Value added, net	60,281	79,527	86,131	72,806	140,416	185,249	200,632	169,593
Generation of income account									
B.1n	Value added, net	60,281	79,527	86,131	72,806	140,416	185,249	200,632	169,593
D.1	Compensation of employees	57,236	61,077	65,773	70,039	133,324	142,271	153,210	163,147
D.29	Other taxes on production	29	85	68	62	68	198	158	144
D.39	Other subsidies on production (-)	0	0	0	0	0	0	0	0
B.2	Operating surplus	3,016	18,365	20,290	2,705	7,025	42,779	47,264	6,302

Production account		K - Real Estate, Renting and Business Activities							
		2004	2005	2006	2007	2004	2005	2006	2007
ESA 95	Code	Lm'000	Lm'000	Lm'000	Lm'000	€'000	€'000	€'000	€'000
P.1	Output	354,938	383,296	443,927	488,111	826,783	892,840	1,034,071	1,136,993
P.2	Intermediate consumption	99,105	113,114	141,806	154,276	230,852	263,484	330,319	359,366
B.1g	Value added, gross	255,833	270,182	302,121	333,835	595,931	629,355	703,752	777,626
K.1	Consumption of fixed capital	57,312	57,035	63,541	67,354	133,500	132,855	148,011	156,894
B.1n	Value added, net	198,522	213,148	238,580	266,481	462,431	496,501	555,741	620,733
Generation of income account									
B.1n	Value added, net	198,522	213,148	238,580	266,481	462,431	496,501	555,741	620,733
D.1	Compensation of employees	48,329	51,045	60,374	69,739	112,575	118,902	140,634	162,448
D.29	Other taxes on production	882	1,795	1,887	1,737	2,055	4,181	4,396	4,046
D.39	Other subsidies on production (-)	414	362	294	77	964	843	685	179
B.2	Operating surplus	149,725	160,670	176,612	195,082	348,766	374,261	411,396	454,418

Production account		L - Public Administration and Defence; Compulsory Social Security							
		2004	2005	2006	2007	2004	2005	2006	2007
ESA 95	Code	Lm'000	Lm'000	Lm'000	Lm'000	€'000	€'000	€'000	€'000
P.1	Output	186,352	187,690	193,720	206,848	434,083	437,200	451,246	481,826
P.2	Intermediate consumption	60,985	62,110	66,407	71,669	142,057	144,677	154,687	166,944
B.1g	Value added, gross	125,367	125,580	127,313	135,179	292,027	292,523	296,560	314,882
K.1	Consumption of fixed capital	19,556	18,956	19,484	20,364	45,553	44,156	45,386	47,435
B.1n	Value added, net	105,811	106,624	107,829	114,815	246,473	248,367	251,174	267,447
Generation of income account									
B.1n	Value added, net	105,811	106,624	107,829	114,815	246,473	248,367	251,174	267,447
D.1	Compensation of employees	105,811	106,624	107,829	114,815	246,473	248,367	251,174	267,447
D.29	Other taxes on production	0	0	0	0	0	0	0	0
D.39	Other subsidies on production (-)	0	0	0	0	0	0	0	0
B.2	Operating surplus	0	0	0	0	0	0	0	0

... Table 3. Sectoral Annual GDP according to NACE A17 Classification

Production account		M - Education							
		2004	2005	2006	2007	2004	2005	2006	2007
ESA 95	Code	Lm'000	Lm'000	Lm'000	Lm'000	€'000	€'000	€'000	€'000
P.1	Output	126,330	130,016	134,800	140,748	294,270	302,856	314,000	327,855
P.2	Intermediate consumption	19,184	19,122	21,619	23,682	44,687	44,542	50,360	55,164
B.1g	Value added, gross	107,146	110,894	113,181	117,066	249,583	258,314	263,640	272,690
K.1	Consumption of fixed capital	5,317	5,115	5,132	4,987	12,386	11,914	11,954	11,617
B.1n	Value added, net	101,829	105,779	108,049	112,079	237,197	246,400	251,685	261,073
Generation of income account									
B.1n	Value added, net	101,829	105,779	108,049	112,079	237,197	246,400	251,685	261,073
D.1	Compensation of employees	92,452	95,991	97,722	100,279	215,355	223,599	227,631	233,587
D.29	Other taxes on production	126	250	260	241	294	582	606	561
D.39	Other subsidies on production (-)	74	76	76	69	172	177	177	161
B.2	Operating surplus	9,325	9,614	10,142	11,628	21,721	22,395	23,626	27,085

Production account		N - Health and Social Work							
		2004	2005	2006	2007	2004	2005	2006	2007
ESA 95	Code	Lm'000	Lm'000	Lm'000	Lm'000	€'000	€'000	€'000	€'000
P.1	Output	132,363	136,575	149,615	154,651	308,324	318,134	348,509	360,240
P.2	Intermediate consumption	32,120	31,294	39,110	38,128	74,821	72,895	91,101	88,814
B.1g	Value added, gross	100,243	105,281	110,505	116,523	233,503	245,239	257,408	271,426
K.1	Consumption of fixed capital	14,241	16,758	19,336	21,371	33,172	39,036	45,042	49,781
B.1n	Value added, net	86,002	88,523	91,169	95,152	200,331	206,203	212,367	221,645
Generation of income account									
B.1n	Value added, net	86,002	88,523	91,169	95,152	200,331	206,203	212,367	221,645
D.1	Compensation of employees	78,614	81,022	83,600	87,314	183,122	188,730	194,736	203,387
D.29	Other taxes on production	135	264	266	245	314	615	620	571
D.39	Other subsidies on production (-)	0	0	0	0	0	0	0	0
B.2	Operating surplus	7,253	7,237	7,303	7,593	16,895	16,857	17,011	17,688

Production account		O - Other Community, Social and Personal Service Activities							
		2004	2005	2006	2007	2004	2005	2006	2007
ESA 95	Code	Lm'000	Lm'000	Lm'000	Lm'000	€'000	€'000	€'000	€'000
P.1	Output	149,564	219,100	352,942	424,516	348,391	510,366	822,134	988,856
P.2	Intermediate consumption	64,607	113,373	208,340	231,978	150,495	264,087	485,302	540,363
B.1g	Value added, gross	84,957	105,727	144,602	192,538	197,897	246,278	336,831	448,493
K.1	Consumption of fixed capital	9,963	11,022	12,464	13,577	23,208	25,674	29,034	31,626
B.1n	Value added, net	74,994	94,706	132,137	178,961	174,689	220,605	307,797	416,867
Generation of income account									
B.1n	Value added, net	74,994	94,706	132,137	178,961	174,689	220,605	307,797	416,867
D.1	Compensation of employees	37,340	39,241	51,854	54,815	86,980	91,406	120,786	127,685
D.29	Other taxes on production	8,534	1,087	1,181	1,090	19,879	2,532	2,751	2,539
D.39	Other subsidies on production (-)	0	963	1,729	1,114	0	2,243	4,027	2,595
B.2	Operating surplus	29,119	55,341	80,832	124,170	67,830	128,910	188,287	289,238

Production account		P - Persons employed with private households							
		2004	2005	2006	2007	2004	2005	2006	2007
ESA 95	Code	Lm'000	Lm'000	Lm'000	Lm'000	€'000	€'000	€'000	€'000
P.1	Output	2,817	2,900	3,009	3,092	6,561	6,756	7,008	7,203
P.2	Intermediate consumption	30	33	32	31	71	78	74	72
B.1g	Value added, gross	2,786	2,867	2,977	3,061	6,490	6,678	6,934	7,131
K.1	Consumption of fixed capital	0	0	0	0	0	0	0	0
B.1n	Value added, net	2,786	2,867	2,977	3,061	6,490	6,678	6,934	7,131
Generation of income account									
B.1n	Value added, net	2,786	2,867	2,977	3,061	6,490	6,678	6,934	7,131
D.1	Compensation of employees	0	0	0	0	0	0	0	0
D.29	Other taxes on production	0	0	0	0	0	0	0	0
D.39	Other subsidies on production (-)	0	0	0	0	0	0	0	0
B.2	Operating surplus	2,786	2,867	2,977	3,061	6,490	6,678	6,934	7,131

... Table 3. Sectoral Annual GDP according to NACE A17 Classification

Production account		Total Economy							
		2004	2005	2006	2007	2004	2005	2006	2007
ESA 95	Code	Lm'000	Lm'000	Lm'000	Lm'000	€'000	€'000	€'000	€'000
P.1	Output	3,529,039	3,722,036	4,151,926	4,337,867	8,220,450	8,670,013	9,671,386	10,104,513
P.2	Intermediate consumption	1,864,295	1,961,153	2,288,077	2,358,128	4,342,639	4,568,257	5,329,787	5,492,961
B.1g	Value added, gross	1,664,744	1,760,884	1,863,849	1,979,739	3,877,811	4,101,756	4,341,599	4,611,552
K.1	Consumption of fixed capital	288,495	291,801	306,422	317,216	672,013	679,712	713,772	738,914
B.1n	Value added, net	1,376,249	1,469,083	1,557,426	1,662,524	3,205,798	3,422,044	3,627,827	3,872,638
Generation of income account									
B.1n	Value added, net	1,376,249	1,469,083	1,557,426	1,662,524	3,205,798	3,422,044	3,627,827	3,872,638
D.1	Compensation of employees	884,355	913,778	954,662	995,568	2,059,993	2,128,529	2,223,764	2,319,051
D.29	Other taxes on production	15,523	11,847	11,971	11,415	36,159	27,596	27,885	26,590
D.39	Other subsidies on production (-)	23,255	28,966	29,176	35,846	54,170	67,473	67,962	83,499
B.2	Operating surplus	499,626	572,425	619,970	691,386	1,163,817	1,333,391	1,444,141	1,610,497
Gross Domestic Product									
B.1g	Value added, gross (at basic prices)	1,664,744	1,760,884	1,863,849	1,979,739	3,877,811	4,101,756	4,341,599	4,611,552
D.21	add Taxes on Products	269,906	297,149	322,743	339,889	628,712	692,171	751,789	791,728
D.31	less Subsidies on Products	13,674	13,436	11,525	11,143	31,852	31,297	26,846	25,956
B.1*g	GDP at market prices	1,920,976	2,044,597	2,175,067	2,308,485	4,474,671	4,762,630	5,066,542	5,377,324
Rate of Growth			6.4%	6.4%	6.1%		6.4%	6.4%	6.1%

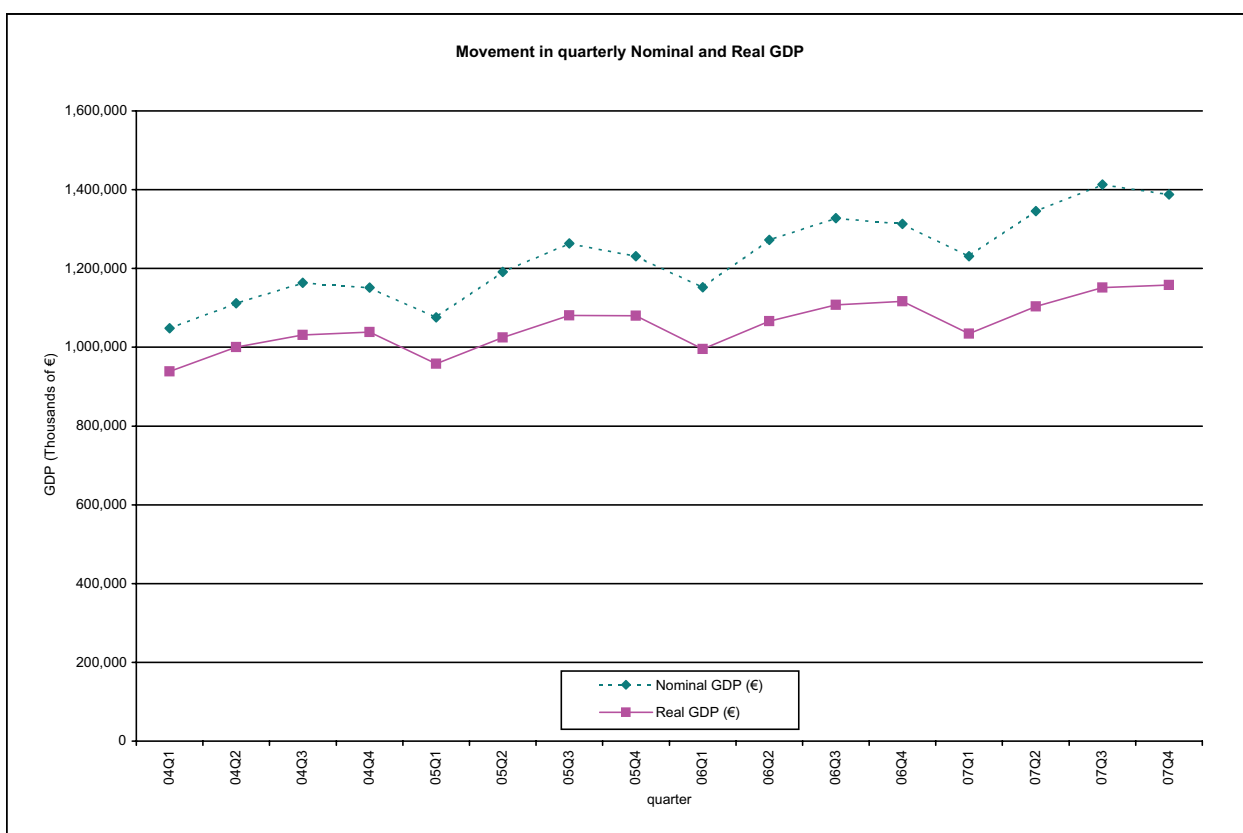


Table 4. Sectoral Quarterly GDP according to NACE A17 Classification ...

		A - Agriculture, Hunting and Forestry															
Production account		2004Q1	2005Q1	2006Q1	2007Q1	2004Q2	2005Q2	2006Q2	2007Q2	2004Q3	2005Q3	2006Q3	2007Q3	2004Q4	2005Q4	2006Q4	2007Q4
ESA 95 Code		Lm'000	Lm'000	Lm'000	Lm'000	Lm'000	Lm'000	Lm'000	Lm'000	Lm'000	Lm'000	Lm'000	Lm'000	Lm'000	Lm'000	Lm'000	Lm'000
P.1	Output	16,247	16,001	15,224	15,337	17,232	17,468	17,879	16,990	17,622	17,966	19,107	17,559	15,021	15,370	15,506	15,896
P.2	Intermediate consumption	7,151	6,977	6,529	7,317	7,646	7,809	7,999	8,357	8,083	8,222	8,776	8,464	6,401	6,897	6,931	7,618
B.1g	Value added, gross	9,096	9,024	8,695	8,020	9,586	9,659	9,880	8,633	9,539	9,744	10,331	9,095	8,620	8,473	8,575	8,278
K.1	Consumption of fixed capital	495	567	571	571	496	567	571	571	496	567	571	571	496	567	571	570
B.1n	Value added, net	8,601	8,457	8,124	7,448	9,091	9,092	9,309	8,061	9,043	9,177	9,760	8,524	8,124	7,906	8,004	7,708
Generation of income account																	
B.1n	Value added, net	8,601	8,457	8,124	7,448	9,091	9,092	9,309	8,061	9,043	9,177	9,760	8,524	8,124	7,906	8,004	7,708
D.1	Compensation of employees	2,558	2,921	2,612	2,195	2,616	2,895	2,525	2,201	2,058	2,679	2,603	2,172	2,980	2,618	2,624	2,196
D.29	Other taxes on production	84	169	211	185	83	247	231	136	143	148	167	151	77	193	142	218
D.39	Other subsidies on production (-)	1,021	1,277	823	841	648	524	486	1,016	329	608	733	417	423	543	887	135
B.2	Operating surplus	6,980	6,644	6,124	5,909	7,040	6,474	7,039	6,740	7,171	6,958	7,723	6,618	5,490	5,638	6,125	5,429

		B - Fishing															
Production account		2004Q1	2005Q1	2006Q1	2007Q1	2004Q2	2005Q2	2006Q2	2007Q2	2004Q3	2005Q3	2006Q3	2007Q3	2004Q4	2005Q4	2006Q4	2007Q4
ESA 95 Code		Lm'000	Lm'000	Lm'000	Lm'000	Lm'000	Lm'000	Lm'000	Lm'000	Lm'000	Lm'000	Lm'000	Lm'000	Lm'000	Lm'000	Lm'000	Lm'000
P.1	Output	2,250	906	1,258	1,319	4,515	4,055	3,520	3,190	3,958	3,424	3,710	2,977	18,390	20,837	30,203	25,057
P.2	Intermediate consumption	1,343	455	681	730	2,627	2,368	2,003	1,851	2,258	1,953	2,164	1,646	11,886	13,464	19,586	13,585
B.1g	Value added, gross	907	451	577	589	1,888	1,687	1,517	1,339	1,700	1,471	1,546	1,331	6,504	7,373	10,617	11,472
K.1	Consumption of fixed capital	316	374	390	396	316	374	392	417	310	374	392	417	311	374	390	410
B.1n	Value added, net	591	76	187	192	1,572	1,313	1,125	922	1,390	1,096	1,153	913	6,193	6,999	10,227	11,062
Generation of income account																	
B.1n	Value added, net	591	76	187	192	1,572	1,313	1,125	922	1,390	1,096	1,153	913	6,193	6,999	10,227	11,062
D.1	Compensation of employees	243	286	340	497	261	328	405	605	287	339	460	632	280	321	470	609
D.29	Other taxes on production	11	25	35	30	11	36	38	22	19	22	27	25	10	28	23	36
D.39	Other subsidies on production (-)	1	2	1	7	0	0	0	15	2	0	28	0	0	1	22	1
B.2	Operating surplus	338	-233	-187	-328	1,300	949	682	310	1,086	735	694	256	5,903	6,651	9,756	10,418

		C - Mining and Quarrying															
Production account		2004Q1	2005Q1	2006Q1	2007Q1	2004Q2	2005Q2	2006Q2	2007Q2	2004Q3	2005Q3	2006Q3	2007Q3	2004Q4	2005Q4	2006Q4	2007Q4
ESA 95 Code		Lm'000	Lm'000	Lm'000	Lm'000	Lm'000	Lm'000	Lm'000	Lm'000	Lm'000	Lm'000	Lm'000	Lm'000	Lm'000	Lm'000	Lm'000	Lm'000
P.1	Output	2,756	3,162	3,038	2,585	2,705	3,412	2,823	2,561	2,630	2,604	3,215	2,661	3,331	3,085	2,606	2,967
P.2	Intermediate consumption	1,398	1,681	1,522	1,157	1,360	1,851	1,359	1,138	1,356	1,294	1,686	1,267	1,884	1,640	1,234	1,489
B.1g	Value added, gross	1,358	1,481	1,516	1,428	1,345	1,561	1,464	1,423	1,274	1,310	1,529	1,394	1,447	1,445	1,372	1,478
K.1	Consumption of fixed capital	88	100	107	108	90	100	107	109	87	99	113	105	85	102	94	108
B.1n	Value added, net	1,270	1,381	1,409	1,321	1,255	1,461	1,356	1,314	1,187	1,211	1,416	1,289	1,362	1,342	1,278	1,370
Generation of income account																	
B.1n	Value added, net	1,270	1,381	1,409	1,321	1,255	1,461	1,356	1,314	1,187	1,211	1,416	1,289	1,362	1,342	1,278	1,370
D.1	Compensation of employees	474	476	510	481	459	476	495	474	441	477	488	453	452	480	501	478
D.29	Other taxes on production	2	3	4	3	2	6	5	2	3	3	3	3	2	4	3	4
D.39	Other subsidies on production (-)	0	0	0	0	0	0	0	0	0	0	0	0	0	0	0	0
B.2	Operating surplus	794	902	895	837	794	979	856	838	743	731	925	833	908	858	774	888

		D - Manufacturing															
Production account		2004Q1	2005Q1	2006Q1	2007Q1	2004Q2	2005Q2	2006Q2	2007Q2	2004Q3	2005Q3	2006Q3	2007Q3	2004Q4	2005Q4	2006Q4	2007Q4
ESA 95 Code		Lm'000	Lm'000	Lm'000	Lm'000	Lm'000	Lm'000	Lm'000	Lm'000	Lm'000	Lm'000	Lm'000	Lm'000	Lm'000	Lm'000	Lm'000	Lm'000
P.1	Output	271,386	241,912	267,009	281,285	267,550	266,934	290,149	292,706	276,296	272,295	295,751	290,463	266,453	274,763	300,999	282,378
P.2	Intermediate consumption	198,425	171,626	195,587	203,454	197,338	190,534	211,031	211,437	203,302	192,543	217,945	208,307	192,735	196,655	221,501	201,561
B.1g	Value added, gross	72,961	70,286	71,422	77,831	70,212	76,400	79,118	81,269	72,994	79,752	77,806	82,156	73,718	78,108	79,498	80,817
K.1	Consumption of fixed capital	15,106	16,094	15,839	15,541	14,731	18,036	17,253	16,339	15,394	18,413	17,303	16,042	14,725	18,368	18,050	15,853
B.1n	Value added, net	57,855	54,191	55,583	62,290	55,481	58,365	61,865	64,930	57,600	61,338	60,503	66,114	58,993	59,740	61,449	64,963
Generation of income account																	
B.1n	Value added, net	57,855	54,191	55,583	62,290	55,481	58,365	61,865	64,930	57,600	61,338	60,503	66,114	58,993	59,740	61,449	64,963
D.1	Compensation of employees	42,089	42,742	43,317	44,056	41,596	43,618	44,151	46,000	41,493	43,692	43,891	43,862	42,671	42,541	43,152	44,720
D.29	Other taxes on production	83	170	205	182	82	244	226	133	144	146	165	148	77	191	138	211
D.39	Other subsidies on production (-)	1,639	2,222	2,185	1,237	2,687	1,943	1,443	1,345	2,200	2,000	1,329	1,233	2,699	3,408	2,215	1,222
B.2	Operating surplus	17,322	13,501	14,246	19,289	16,490	16,446	18,931	20,142	18,163	19,500	17,776	23,337	18,944	20,416	20,374	21,254

... Table 4. Sectoral Quarterly GDP according to NACE A17 Classification

Production account		E - Electricity, Gas and Water Supply														
ESA 95 Code	2004Q1	2005Q1	2006Q1	2007Q1	2004Q2	2005Q2	2006Q2	2007Q2	2004Q3	2005Q3	2006Q3	2007Q3	2004Q4	2005Q4	2006Q4	2007Q4
	Lm'000	Lm'000	Lm'000	Lm'000	Lm'000	Lm'000	Lm'000	Lm'000	Lm'000	Lm'000	Lm'000	Lm'000	Lm'000	Lm'000	Lm'000	Lm'000
P.1 Output	38,378	44,759	56,344	53,187	35,468	41,366	54,033	52,966	40,542	49,942	63,319	64,523	39,575	49,965	53,513	57,971
P.2 Intermediate consumption	28,762	38,737	52,058	47,692	29,416	37,834	49,889	48,701	37,946	45,841	60,152	62,583	35,120	48,264	49,216	58,264
B.1g Value added, gross	9,616	6,022	4,286	5,495	6,052	3,532	4,144	4,265	2,596	4,301	3,167	1,940	4,455	1,701	4,297	-293
K.1 Consumption of fixed capital	5,010	4,025	3,952	4,146	2,343	3,938	3,955	4,147	3,627	3,748	3,795	4,020	3,486	3,931	4,073	4,008
B.1n Value added, net	4,606	1,997	334	1,349	3,709	-406	189	118	-1,031	553	-628	-2,080	969	-2,230	224	-4,301
Generation of income account																
B.1n Value added, net	4,606	1,997	334	1,349	3,709	-406	189	118	-1,031	553	-628	-2,080	969	-2,230	224	-4,301
D.1 Compensation of employees	5,291	5,154	4,975	5,209	5,222	5,124	5,087	5,109	5,193	5,066	5,144	5,200	5,214	5,241	5,175	5,223
D.29 Other taxes on production	49	47	45	46	48	48	46	46	68	45	45	44	48	45	44	44
D.39 Other subsidies on production (-)	0	0	625	2,023	1,883	1,883	2,508	140	0	0	625	5,212	0	0	625	7,159
B.2 Operating surplus	-734	-3,204	-4,061	-1,883	322	-3,695	-2,436	-4,897	-6,292	-4,558	-5,192	-2,112	-4,293	-7,516	-4,370	-2,409

Production account		F - Construction														
ESA 95 Code	2004Q1	2005Q1	2006Q1	2007Q1	2004Q2	2005Q2	2006Q2	2007Q2	2004Q3	2005Q3	2006Q3	2007Q3	2004Q4	2005Q4	2006Q4	2007Q4
	Lm'000	Lm'000	Lm'000	Lm'000	Lm'000	Lm'000	Lm'000	Lm'000	Lm'000	Lm'000	Lm'000	Lm'000	Lm'000	Lm'000	Lm'000	Lm'000
P.1 Output	38,655	39,660	43,280	43,593	38,795	40,198	43,886	45,362	38,899	40,554	43,751	44,960	38,617	41,218	44,161	45,920
P.2 Intermediate consumption	21,684	22,611	24,802	27,160	22,204	22,960	26,358	25,250	22,139	23,254	25,275	26,210	22,006	23,852	25,626	26,259
B.1g Value added, gross	16,971	17,049	18,478	16,433	16,591	17,238	17,528	20,112	16,760	17,300	18,476	18,750	16,611	17,366	18,535	19,661
K.1 Consumption of fixed capital	2,585	2,670	2,898	2,938	2,591	2,691	2,914	2,958	2,592	2,703	2,915	2,974	2,594	2,721	2,919	2,966
B.1n Value added, net	14,386	14,378	15,580	13,495	14,000	14,548	14,614	17,153	14,168	14,597	15,561	15,776	14,017	14,645	15,616	16,695
Generation of income account																
B.1n Value added, net	14,386	14,378	15,580	13,495	14,000	14,548	14,614	17,153	14,168	14,597	15,561	15,776	14,017	14,645	15,616	16,695
D.1 Compensation of employees	8,848	8,882	9,393	9,784	8,531	8,953	9,419	9,405	8,612	9,014	9,350	9,841	8,511	9,075	9,383	9,767
D.29 Other taxes on production	95	198	255	224	94	289	279	164	162	173	202	183	87	226	172	264
D.39 Other subsidies on production (-)	0	0	0	0	0	0	0	0	0	0	0	0	0	0	0	0
B.2 Operating surplus	5,443	5,298	5,932	3,487	5,375	5,306	4,916	7,584	5,394	5,410	6,009	5,752	5,419	5,344	6,061	6,664

Production account		G - Wholesale and Retail Trade; Repair of Motor Vehicles, Motorcycles and Personal and Households Goods														
ESA 95 Code	2004Q1	2005Q1	2006Q1	2007Q1	2004Q2	2005Q2	2006Q2	2007Q2	2004Q3	2005Q3	2006Q3	2007Q3	2004Q4	2005Q4	2006Q4	2007Q4
	Lm'000	Lm'000	Lm'000	Lm'000	Lm'000	Lm'000	Lm'000	Lm'000	Lm'000	Lm'000	Lm'000	Lm'000	Lm'000	Lm'000	Lm'000	Lm'000
P.1 Output	69,351	72,850	76,774	77,848	75,107	82,173	85,776	82,343	75,236	80,567	79,768	85,313	76,924	85,634	85,939	89,717
P.2 Intermediate consumption	19,116	20,195	21,528	22,591	19,939	22,247	24,749	23,868	20,265	21,911	22,941	23,805	21,132	23,875	24,898	25,873
B.1g Value added, gross	50,235	52,655	55,246	55,257	55,168	59,926	61,027	58,475	54,971	58,656	56,827	61,508	55,792	61,759	61,041	63,844
K.1 Consumption of fixed capital	3,588	4,235	4,550	4,747	3,737	4,647	5,024	5,023	3,796	4,498	4,729	5,114	4,003	4,865	5,044	5,246
B.1n Value added, net	46,647	48,420	50,697	50,511	51,431	55,279	56,003	53,452	51,175	54,158	52,098	56,394	51,789	56,894	55,998	58,598
Generation of income account																
B.1n Value added, net	46,647	48,420	50,697	50,511	51,431	55,279	56,003	53,452	51,175	54,158	52,098	56,394	51,789	56,894	55,998	58,598
D.1 Compensation of employees	20,817	22,233	22,864	23,561	21,085	22,621	23,294	23,916	21,344	22,735	23,121	23,901	21,459	22,547	23,479	24,453
D.29 Other taxes on production	361	632	983	742	509	1,050	987	560	748	783	809	876	382	879	618	926
D.39 Other subsidies on production (-)	0	450	525	525	0	450	525	525	0	450	525	525	0	450	525	525
B.2 Operating surplus	25,469	26,005	27,375	26,733	29,837	32,058	32,247	29,501	29,083	31,090	28,693	32,142	29,948	33,918	32,426	33,744

Production account		H - Hotels and Restaurants														
ESA 95 Code	2004Q1	2005Q1	2006Q1	2007Q1	2004Q2	2005Q2	2006Q2	2007Q2	2004Q3	2005Q3	2006Q3	2007Q3	2004Q4	2005Q4	2006Q4	2007Q4
	Lm'000	Lm'000	Lm'000	Lm'000	Lm'000	Lm'000	Lm'000	Lm'000	Lm'000	Lm'000	Lm'000	Lm'000	Lm'000	Lm'000	Lm'000	Lm'000
P.1 Output	37,396	36,897	36,281	37,664	55,826	57,125	58,951	60,403	88,169	88,354	89,480	97,035	51,314	52,170	50,114	54,735
P.2 Intermediate consumption	20,775	20,922	21,088	22,244	30,562	31,595	33,481	34,098	48,071	48,404	50,454	53,783	28,517	29,830	29,305	31,708
B.1g Value added, gross	16,621	15,975	15,193	15,420	25,264	25,530	25,470	26,306	40,098	39,950	39,026	43,252	22,797	22,340	20,809	23,027
K.1 Consumption of fixed capital	3,344	3,687	3,598	3,743	5,180	5,996	6,218	6,385	8,245	9,323	9,454	10,410	4,628	5,286	4,975	5,524
B.1n Value added, net	13,277	12,287	11,595	11,677	20,084	19,534	19,252	19,921	31,852	30,627	29,571	32,843	18,169	17,054	15,834	17,502
Generation of income account																
B.1n Value added, net	13,277	12,287	11,595	11,677	20,084	19,534	19,252	19,921	31,852	30,627	29,571	32,843	18,169	17,054	15,834	17,502
D.1 Compensation of employees	14,264	14,314	15,190	15,663	15,633	15,223	16,478	16,923	15,778	16,597	16,445	17,921	14,728	15,449	15,719	17,371
D.29 Other taxes on production	0	0	183	30	195	83	90	77	161	196	92	207	98	150	80	98
D.39 Other subsidies on production (-)	0	0	0	0	0	2	2	2	9	2	5	0	8	10	8	3
B.2 Operating surplus	-987	-2,027	-3,778	-4,016	4,256	4,230	2,686	2,923	15,922	13,836	13,039	14,715	3,351	1,465	43	36

... Table 4. Sectoral Quarterly GDP according to NACE A17 Classification

		I - Transport, Storage and Communication															
Production account		2004Q1	2005Q1	2006Q1	2007Q1	2004Q2	2005Q2	2006Q2	2007Q2	2004Q3	2005Q3	2006Q3	2007Q3	2004Q4	2005Q4	2006Q4	2007Q4
ESA 95 Code		Lm'000	Lm'000	Lm'000	Lm'000	Lm'000	Lm'000	Lm'000	Lm'000	Lm'000	Lm'000	Lm'000	Lm'000	Lm'000	Lm'000	Lm'000	Lm'000
P.1	Output	77,052	77,709	82,839	89,520	100,584	102,189	107,550	114,181	110,680	117,742	123,647	132,964	89,143	95,475	105,203	106,041
P.2	Intermediate consumption	41,643	40,935	44,651	49,272	58,062	57,743	62,046	65,939	62,838	67,840	73,217	78,862	48,241	53,171	59,844	59,080
B.1g	Value added, gross	35,409	36,774	38,188	40,247	42,522	44,446	45,504	48,241	47,842	49,902	50,430	54,102	40,902	42,304	45,359	46,961
K.1	Consumption of fixed capital	11,124	7,313	7,889	8,519	12,419	7,715	8,161	8,848	13,069	8,070	9,312	9,728	12,894	7,899	8,850	10,811
B.1n	Value added, net	24,284	29,461	30,299	31,729	30,104	36,730	37,343	39,394	34,773	41,832	41,118	44,373	28,008	34,405	36,508	36,150
Generation of income account																	
B.1n	Value added, net	24,284	29,461	30,299	31,729	30,104	36,730	37,343	39,394	34,773	41,832	41,118	44,373	28,008	34,405	36,508	36,150
D.1	Compensation of employees	20,058	19,661	21,541	20,955	21,856	20,919	21,694	20,516	20,660	21,911	20,440	21,099	20,511	21,170	20,772	21,117
D.29	Other taxes on production	128	447	399	479	55	620	509	519	790	440	366	435	906	380	482	587
D.39	Other subsidies on production (-)	641	1,150	498	1,451	3,799	4,598	4,637	3,920	533	802	702	1,289	4,245	4,790	4,590	3,818
B.2	Operating surplus	4,740	10,503	8,856	11,745	11,992	19,790	19,777	22,278	13,856	20,282	21,014	24,128	10,837	17,646	19,844	18,264

		J - Financial Intermediation															
Production account		2004Q1	2005Q1	2006Q1	2007Q1	2004Q2	2005Q2	2006Q2	2007Q2	2004Q3	2005Q3	2006Q3	2007Q3	2004Q4	2005Q4	2006Q4	2007Q4
ESA 95 Code		Lm'000	Lm'000	Lm'000	Lm'000	Lm'000	Lm'000	Lm'000	Lm'000	Lm'000	Lm'000	Lm'000	Lm'000	Lm'000	Lm'000	Lm'000	Lm'000
P.1	Output	41,379	43,834	51,062	60,701	40,555	56,396	53,785	59,948	44,447	48,469	56,761	54,660	46,241	53,019	55,700	52,416
P.2	Intermediate consumption	28,422	24,874	30,588	34,667	22,494	32,169	29,641	31,333	27,327	30,528	32,579	37,539	26,388	26,745	29,844	42,201
B.1g	Value added, gross	12,957	18,960	20,474	26,034	18,061	24,227	24,144	28,615	17,120	17,941	24,182	17,121	19,853	26,274	25,856	10,215
K.1	Consumption of fixed capital	1,808	1,974	2,014	2,154	1,748	2,022	2,088	2,207	1,904	1,478	2,094	2,289	2,250	2,401	2,329	2,528
B.1n	Value added, net	11,149	16,986	18,460	23,880	16,313	22,205	22,056	26,408	15,216	16,463	22,088	14,832	17,603	23,873	23,527	7,687
Generation of income account																	
B.1n	Value added, net	11,149	16,986	18,460	23,880	16,313	22,205	22,056	26,408	15,216	16,463	22,088	14,832	17,603	23,873	23,527	7,687
D.1	Compensation of employees	13,419	14,683	16,469	16,686	13,696	15,186	16,120	17,418	15,127	15,327	16,227	17,802	14,994	15,881	16,957	18,133
D.29	Other taxes on production	6	18	19	17	6	28	21	12	11	17	16	13	6	22	12	20
D.39	Other subsidies on production (-)	0	0	0	0	0	0	0	0	0	0	0	0	0	0	0	0
B.2	Operating surplus	-2,276	2,285	1,972	7,177	2,611	6,991	5,915	8,978	78	1,119	5,845	-2,983	2,603	7,970	6,558	-10,466

		K - Real Estate, Renting and Business Activities															
Production account		2004Q1	2005Q1	2006Q1	2007Q1	2004Q2	2005Q2	2006Q2	2007Q2	2004Q3	2005Q3	2006Q3	2007Q3	2004Q4	2005Q4	2006Q4	2007Q4
ESA 95 Code		Lm'000	Lm'000	Lm'000	Lm'000	Lm'000	Lm'000	Lm'000	Lm'000	Lm'000	Lm'000	Lm'000	Lm'000	Lm'000	Lm'000	Lm'000	Lm'000
P.1	Output	83,901	86,665	103,954	113,034	90,904	97,756	110,975	120,473	91,946	100,997	114,420	126,002	88,187	97,879	114,577	128,602
P.2	Intermediate consumption	22,293	22,980	32,430	35,775	26,109	29,424	35,339	38,482	26,259	31,279	36,625	39,737	24,444	29,431	37,413	40,281
B.1g	Value added, gross	61,609	63,685	71,524	77,259	64,795	68,332	75,637	81,990	65,687	69,718	77,795	86,265	63,743	68,447	77,165	88,321
K.1	Consumption of fixed capital	14,065	14,702	15,543	15,950	14,480	15,182	15,936	16,713	14,496	13,675	16,047	17,406	14,271	13,476	16,015	17,285
B.1n	Value added, net	47,544	48,983	55,981	61,309	50,315	53,150	59,701	65,277	51,192	56,043	61,748	68,859	49,472	54,971	61,149	71,036
Generation of income account																	
B.1n	Value added, net	47,544	48,983	55,981	61,309	50,315	53,150	59,701	65,277	51,192	56,043	61,748	68,859	49,472	54,971	61,149	71,036
D.1	Compensation of employees	11,685	12,191	13,650	15,341	12,014	12,768	14,909	17,297	12,466	13,203	15,897	18,236	12,163	12,883	15,919	18,863
D.29	Other taxes on production	190	401	529	466	189	585	580	342	326	352	420	380	177	457	358	549
D.39	Other subsidies on production (-)	0	97	0	0	131	27	27	35	193	116	0	0	90	122	267	42
B.2	Operating surplus	35,668	36,488	41,803	45,501	38,242	39,825	44,239	47,673	38,592	42,604	45,431	50,242	37,222	41,754	45,139	51,665

		L - Public Administration and Defence; Compulsory Social Security															
Production account		2004Q1	2005Q1	2006Q1	2007Q1	2004Q2	2005Q2	2006Q2	2007Q2	2004Q3	2005Q3	2006Q3	2007Q3	2004Q4	2005Q4	2006Q4	2007Q4
ESA 95 Code		Lm'000	Lm'000	Lm'000	Lm'000	Lm'000	Lm'000	Lm'000	Lm'000	Lm'000	Lm'000	Lm'000	Lm'000	Lm'000	Lm'000	Lm'000	Lm'000
P.1	Output	45,643	43,581	44,483	46,228	43,463	47,401	45,892	50,048	45,826	45,254	48,719	51,568	51,420	51,454	54,626	59,004
P.2	Intermediate consumption	14,708	12,847	12,785	13,025	12,731	15,584	13,935	16,189	14,212	14,162	16,834	17,583	19,334	19,517	22,853	24,872
B.1g	Value added, gross	30,935	30,734	31,698	33,203	30,732	31,817	31,957	33,859	31,614	31,092	31,885	33,985	32,086	31,937	31,773	34,132
K.1	Consumption of fixed capital	4,889	4,739	4,871	5,091	4,889	4,739	4,871	5,091	4,889	4,739	4,871	5,091	4,889	4,739	4,871	5,091
B.1n	Value added, net	26,046	25,995	26,827	28,112	25,843	27,078	27,086	28,768	26,725	26,353	27,014	28,894	27,197	27,198	26,902	29,041
Generation of income account																	
B.1n	Value added, net	26,046	25,995	26,827	28,112	25,843	27,078	27,086	28,768	26,725	26,353	27,014	28,894	27,197	27,198	26,902	29,041
D.1	Compensation of employees	26,046	25,995	26,827	28,112	25,843	27,078	27,086	28,768	26,725	26,353	27,014	28,894	27,197	27,198	26,902	29,041
D.29	Other taxes on production	0	0	0	0	0	0	0	0	0	0	0	0	0	0	0	0
D.39	Other subsidies on production (-)	0	0	0	0	0	0	0	0	0	0	0	0	0	0	0	0
B.2	Operating surplus	0	0	0	0	0	0	0	0	0	0	0	0	0	0	0	0

... Table 4. Sectoral Quarterly GDP according to NACE A17 Classification

Production account		M - Education															
		2004Q1	2005Q1	2006Q1	2007Q1	2004Q2	2005Q2	2006Q2	2007Q2	2004Q3	2005Q3	2006Q3	2007Q3	2004Q4	2005Q4	2006Q4	2007Q4
ESA 95	Code	Lm'000	Lm'000	Lm'000	Lm'000	Lm'000	Lm'000	Lm'000	Lm'000	Lm'000	Lm'000	Lm'000	Lm'000	Lm'000	Lm'000	Lm'000	Lm'000
P.1	Output	30,977	30,320	32,143	32,970	31,448	33,366	33,844	35,855	33,597	34,918	34,673	39,017	30,308	31,412	34,140	32,906
P.2	Intermediate consumption	5,018	4,362	5,434	5,861	4,564	4,898	4,915	5,897	5,380	5,632	4,952	7,379	4,223	4,230	6,318	4,546
B.1g	Value added, gross	25,959	25,958	26,709	27,109	26,884	28,468	28,929	29,958	28,217	29,286	29,721	31,638	26,085	27,182	27,822	28,360
K.1	Consumption of fixed capital	1,307	1,246	1,246	1,206	1,308	1,259	1,267	1,234	1,385	1,354	1,359	1,324	1,317	1,255	1,260	1,223
B.1n	Value added, net	24,653	24,711	25,463	25,903	25,576	27,209	27,662	28,725	26,832	27,932	28,362	30,314	24,768	25,927	26,562	27,137
Generation of income account																	
B.1n	Value added, net	24,653	24,711	25,463	25,903	25,576	27,209	27,662	28,725	26,832	27,932	28,362	30,314	24,768	25,927	26,562	27,137
D.1	Compensation of employees	23,354	23,582	24,284	24,796	22,695	24,110	24,117	24,839	22,717	23,406	24,012	24,968	23,686	24,893	25,309	25,676
D.29	Other taxes on production	27	56	73	65	27	81	80	47	47	49	58	53	25	64	49	76
D.39	Other subsidies on production (-)	20	19	19	17	20	19	19	12	17	19	0	23	17	19	38	17
B.2	Operating surplus	1,292	1,092	1,125	1,059	2,874	3,037	3,484	3,851	4,085	4,496	4,292	5,316	1,074	989	1,242	1,402

Production account		N - Health and Social Work															
		2004Q1	2005Q1	2006Q1	2007Q1	2004Q2	2005Q2	2006Q2	2007Q2	2004Q3	2005Q3	2006Q3	2007Q3	2004Q4	2005Q4	2006Q4	2007Q4
ESA 95	Code	Lm'000	Lm'000	Lm'000	Lm'000	Lm'000	Lm'000	Lm'000	Lm'000	Lm'000	Lm'000	Lm'000	Lm'000	Lm'000	Lm'000	Lm'000	Lm'000
P.1	Output	33,198	32,916	36,411	35,442	33,025	33,394	37,066	41,136	31,938	34,505	38,164	39,840	34,202	35,760	37,974	38,233
P.2	Intermediate consumption	8,047	6,729	8,941	7,139	8,324	6,911	9,690	11,145	7,115	7,967	10,022	9,866	8,635	9,687	10,456	9,977
B.1g	Value added, gross	25,151	26,187	27,470	28,303	24,701	26,483	27,376	29,991	24,823	26,538	28,142	29,974	25,567	26,073	27,518	28,256
K.1	Consumption of fixed capital	3,525	4,151	4,779	5,327	3,554	4,185	4,818	5,355	3,574	4,204	4,867	5,353	3,588	4,218	4,873	5,336
B.1n	Value added, net	21,627	22,037	22,691	22,976	21,147	22,297	22,558	24,635	21,249	22,334	23,275	24,621	21,979	21,855	22,645	22,920
Generation of income account																	
B.1n	Value added, net	21,627	22,037	22,691	22,976	21,147	22,297	22,558	24,635	21,249	22,334	23,275	24,621	21,979	21,855	22,645	22,920
D.1	Compensation of employees	19,810	20,096	20,787	21,130	19,322	20,422	20,699	22,737	19,401	20,440	21,386	22,574	20,082	20,064	20,728	20,873
D.29	Other taxes on production	29	59	75	66	29	86	82	48	50	52	59	54	27	67	50	77
D.39	Other subsidies on production (-)	0	0	0	0	0	0	0	0	0	0	0	0	0	0	0	0
B.2	Operating surplus	1,788	1,882	1,829	1,780	1,796	1,789	1,777	1,850	1,799	1,842	1,830	1,993	1,871	1,724	1,867	1,970

Production account		O - Other Community, Social and Personal Service Activities															
		2004Q1	2005Q1	2006Q1	2007Q1	2004Q2	2005Q2	2006Q2	2007Q2	2004Q3	2005Q3	2006Q3	2007Q3	2004Q4	2005Q4	2006Q4	2007Q4
ESA 95	Code	Lm'000	Lm'000	Lm'000	Lm'000	Lm'000	Lm'000	Lm'000	Lm'000	Lm'000	Lm'000	Lm'000	Lm'000	Lm'000	Lm'000	Lm'000	Lm'000
P.1	Output	36,275	49,491	72,625	86,528	37,343	50,763	83,723	95,915	38,155	56,105	95,046	115,281	37,791	62,741	101,548	126,792
P.2	Intermediate consumption	14,614	25,122	41,172	46,632	15,547	25,787	49,279	52,768	17,208	28,622	56,842	63,987	17,238	33,841	61,047	68,591
B.1g	Value added, gross	21,661	24,369	31,453	39,896	21,796	24,976	34,444	43,147	20,947	27,483	38,204	51,294	20,553	28,900	40,501	58,201
K.1	Consumption of fixed capital	2,358	2,656	2,931	3,215	2,427	2,623	3,071	3,333	2,599	2,869	3,233	3,432	2,579	2,873	3,230	3,597
B.1n	Value added, net	19,303	21,712	28,522	36,680	19,369	22,353	31,374	39,815	18,348	24,614	34,971	47,863	17,974	26,027	37,271	54,604
Generation of income account																	
B.1n	Value added, net	19,303	21,712	28,522	36,680	19,369	22,353	31,374	39,815	18,348	24,614	34,971	47,863	17,974	26,027	37,271	54,604
D.1	Compensation of employees	9,331	9,750	11,529	12,461	9,399	10,049	12,745	13,220	9,217	9,615	13,345	14,017	9,393	9,826	14,235	15,117
D.29	Other taxes on production	5,117	258	345	306	114	346	356	213	3,195	211	259	235	108	272	221	336
D.39	Other subsidies on production (-)	0	360	263	383	0	117	736	366	0	243	264	122	0	243	466	243
B.2	Operating surplus	4,855	12,064	16,911	24,296	9,856	12,074	19,009	26,748	5,936	15,031	21,631	33,733	8,472	16,172	23,281	39,394

Production account		P - Private households with employed persons															
		2004Q1	2005Q1	2006Q1	2007Q1	2004Q2	2005Q2	2006Q2	2007Q2	2004Q3	2005Q3	2006Q3	2007Q3	2004Q4	2005Q4	2006Q4	2007Q4
ESA 95	Code	Lm'000	Lm'000	Lm'000	Lm'000	Lm'000	Lm'000	Lm'000	Lm'000	Lm'000	Lm'000	Lm'000	Lm'000	Lm'000	Lm'000	Lm'000	Lm'000
P.1	Output	704	725	752	773	704	725	752	773	704	725	752	773	704	725	752	773
P.2	Intermediate consumption	6	7	8	9	8	9	9	8	8	8	8	6	8	9	7	7
B.1g	Value added, gross	698	718	745	764	696	716	743	765	696	717	744	767	696	716	745	766
K.1	Consumption of fixed capital	0	0	0	0	0	0	0	0	0	0	0	0	0	0	0	0
B.1n	Value added, net	698	718	745	764	696	716	743	765	696	717	744	767	696	716	745	766
Generation of income account																	
B.1n	Value added, net	698	718	745	764	696	716	743	765	696	717	744	767	696	716	745	766
D.1	Compensation of employees	0	0	0	0	0	0	0	0	0	0	0	0	0	0	0	0
D.29	Other taxes on production	0	0	0	0	0	0	0	0	0	0	0	0	0	0	0	0
D.39	Other subsidies on production (-)	0	0	0	0	0	0	0	0	0	0	0	0	0	0	0	0
B.2	Operating surplus	698	718	745	764	696	716	743	765	696	717	744	767	696	716	745	766

... Table 4. Sectoral Quarterly GDP according to NACE A17 Classification

Production account

		Total Economy														
ESA 95 Code	2004Q1	2005Q1	2006Q1	2007Q1	2004Q2	2005Q2	2006Q2	2007Q2	2004Q3	2005Q3	2006Q3	2007Q3	2004Q4	2005Q4	2006Q4	2007Q4
	Lm'000	Lm'000	Lm'000	Lm'000	Lm'000	Lm'000	Lm'000	Lm'000	Lm'000	Lm'000	Lm'000	Lm'000	Lm'000	Lm'000	Lm'000	Lm'000
P.1 Output	825,549	821,388	923,477	978,014	875,224	934,721	1,030,605	1,074,850	940,646	994,421	1,110,283	1,165,596	887,621	971,507	1,087,561	1,119,408
P.2 Intermediate consumption	433,405	421,062	499,801	524,728	458,931	489,722	561,722	576,463	503,767	529,260	620,474	641,024	468,193	521,108	606,079	615,914
B.1g Value added, gross	392,143	400,325	423,676	453,286	416,293	444,999	468,883	498,387	436,879	465,161	489,809	524,572	419,429	450,399	481,481	503,494
K.1 Consumption of fixed capital	69,608	68,534	71,178	73,651	70,308	74,075	76,646	78,730	76,463	76,115	81,055	84,278	72,116	73,077	77,543	80,556
B.1n Value added, net	322,535	331,791	352,498	379,635	345,986	370,924	392,236	419,657	360,416	389,046	408,754	440,294	347,313	377,322	403,938	422,938
<u>Generation of income account</u>																
B.1n Value added, net	322,535	331,791	352,498	379,635	345,986	370,924	392,236	419,657	360,416	389,046	408,754	440,294	347,313	377,322	403,938	422,938
D.1 Compensation of employees	218,288	222,966	234,288	240,929	220,227	229,772	239,225	249,429	221,520	230,854	239,825	251,572	224,320	230,185	241,324	253,638
D.29 Other taxes on production	6,182	2,483	3,361	2,841	1,444	3,749	3,530	2,321	5,867	2,637	2,688	2,807	2,030	2,978	2,392	3,446
D.39 Other subsidies on production (-)	3,322	5,577	4,939	6,484	9,168	9,563	10,383	7,376	3,283	4,240	4,211	8,821	7,482	9,586	9,643	13,165
B.2 Operating surplus	101,387	111,919	119,788	142,350	133,482	146,966	159,864	175,283	136,312	159,795	170,452	194,735	128,445	153,745	169,865	179,018

Gross Domestic Product

ESA 95 Code	2004Q1	2005Q1	2006Q1	2007Q1	2004Q2	2005Q2	2006Q2	2007Q2	2004Q3	2005Q3	2006Q3	2007Q3	2004Q4	2005Q4	2006Q4	2007Q4
	Lm'000	Lm'000	Lm'000	Lm'000	Lm'000	Lm'000	Lm'000	Lm'000	Lm'000	Lm'000	Lm'000	Lm'000	Lm'000	Lm'000	Lm'000	Lm'000
B.1g Value added, gross (at basic prices)	392,143	400,325	423,676	453,286	416,293	444,999	468,883	498,387	436,879	465,161	489,809	524,572	419,429	450,399	481,481	503,494
D.21 add Taxes on Products	61,307	67,011	72,904	78,081	62,940	68,301	79,333	82,155	66,269	79,968	83,615	84,632	79,390	81,869	86,891	95,021
D.31 less Subsidies on Products	3,602	5,373	1,822	2,969	1,894	1,842	1,874	2,942	3,556	2,629	3,311	2,466	4,622	3,592	4,518	2,766
B.1*g GDP at market prices	449,848	461,963	494,758	528,398	477,339	511,458	546,342	577,600	499,592	542,500	570,113	606,738	494,197	528,676	563,854	595,749
Rate of Growth	3.9%	2.7%	7.1%	6.8%	1.0%	7.1%	6.8%	5.7%	1.1%	8.6%	5.1%	6.4%	2.1%	7.0%	6.7%	5.7%

Table 5. Household Final Consumption Expenditure

COICOP Code	2004		2005		2006		2007	
	Lm'000	€'000	Lm'000	€'000	Lm'000	€'000	Lm'000	€'000
01 Food and Non-Alcoholic Beverages	243,227	566,567	245,418	571,670	252,336	587,785	274,101	638,484
02 Alcoholic Beverages, Tobacco	48,108	112,062	44,166	102,879	43,662	101,705	45,516	106,024
03 Clothing and Footwear	86,772	202,125	88,967	207,237	74,481	173,494	71,538	166,640
04 Housing, Water, Electricity, Gas and other fuels	156,085	363,580	165,428	385,344	180,530	420,522	188,863	439,932
05 Furnishings, Household Equipment and Routine Household Maintenance	128,177	298,572	133,723	311,491	130,366	303,671	135,063	314,612
06 Health	36,081	84,046	36,891	85,933	38,295	89,203	36,952	86,075
07 Transport	195,646	455,733	211,010	491,521	216,721	504,824	219,713	511,794
08 Communication	70,558	164,356	70,169	163,450	71,925	167,540	78,199	182,155
09 Recreation and Culture	155,941	363,245	160,818	374,605	170,534	397,237	183,200	426,741
10 Education	17,789	41,437	18,535	43,175	19,355	45,085	20,499	47,750
11 Restaurants and Hotels	198,939	463,403	199,708	465,195	201,713	469,865	215,543	502,080
12 Miscellaneous Goods and Services	121,059	281,992	132,940	309,667	139,001	323,785	142,530	332,006
Balance of expenditures of residents abroad and expenditures of non-residents on the economic territory	-216,781	-504,963	-209,803	-488,710	-199,238	-464,100	-219,180	-510,551
Total	1,241,602	2,892,154	1,297,970	3,023,456	1,339,681	3,120,617	1,392,538	3,243,740

Table 6. NPISH Final Consumption Expenditure

COPNI Code	2004		2005		2006		2007	
	Lm'000	€'000	Lm'000	€'000	Lm'000	€'000	Lm'000	€'000
01 Housing	-	-	-	-	-	-	-	-
02 Health	622	1,449	650	1,514	676	1,575	682	1,589
03 Recreation and Culture	5,138	11,968	5,365	12,497	5,579	12,996	5,636	13,128
04 Education	13,325	31,039	13,911	32,404	14,459	33,680	14,615	34,044
05 Social Protection	5,537	12,898	5,782	13,468	6,011	14,002	6,072	14,144
06 Religion	7,532	17,545	7,866	18,323	8,178	19,050	8,260	19,241
07 Political Parties etc.	1,549	3,608	1,618	3,769	1,682	3,918	1,699	3,958
08 Environmental Protection	153	356	160	373	167	389	168	391
09 Services n.e.c.	70	163	73	170	76	177	77	179
Total	33,926	79,026	35,425	82,518	36,828	85,786	37,209	86,674

Table 7. General Government Final Consumption Expenditure

COFOG Code	2004		2005		2006		2007	
	Lm'000	€'000	Lm'000	€'000	Lm'000	€'000	Lm'000	€'000
01 General Public Services	49,278	114,787	45,218	105,330	50,784	118,295	52,152	121,481
02 Defence	13,098	30,510	14,320	33,357	15,252	35,528	15,663	36,485
03 Public Order and Safety	29,231	68,090	26,966	62,814	28,173	65,625	28,931	67,391
04 Economic Affairs	71,566	166,704	71,613	166,813	66,888	155,807	68,689	160,002
05 Environmental Protection	14,395	33,531	19,142	44,589	23,283	54,235	23,910	55,695
06 Housing and Community Amenities	2,330	5,427	5,865	13,662	5,955	13,871	6,116	14,246
07 Health	102,094	237,815	103,301	240,627	112,679	262,471	117,201	273,005
08 Recreation, Culture and Religion	7,142	16,636	7,687	17,906	7,650	17,820	7,856	18,300
09 Education	87,083	202,849	90,507	210,825	92,832	216,240	95,348	222,101
10 Social Protection	25,065	58,386	24,184	56,334	30,327	70,643	31,292	72,891
Total	401,282	934,736	408,803	952,255	433,823	1,010,536	447,158	1,041,598

Table 8. Gross Fixed Capital Formation

Pi6 Code	2004		2005		2006		2007	
	Lm'000	€'000	Lm'000	€'000	Lm'000	€'000	Lm'000	€'000
01 Products of agriculture, forestry, fisheries and aquaculture	2,035	4,740	1,690	3,937	1,868	4,351	1,565	3,645
Equipment:								
02 Metal products and machinery	117,043	272,637	120,187	279,960	129,833	302,430	120,742	281,253
03 Transport equipment	13,953	32,502	14,374	33,482	24,875	57,943	17,173	40,002
Construction:								
04 of which housing	87,782	204,477	91,633	213,447	100,329	233,704	128,346	298,966
05 of which other constructions	116,078	270,389	136,753	318,549	127,834	297,773	119,209	277,682
06 Other products	33,005	76,881	33,261	77,477	39,284	91,507	44,110	102,749
Total	369,895	861,624	397,897	926,851	424,023	987,708	431,146	1,004,300

Table 9. Expenditure approach at constant 2000 prices

ESA 95 Code		2004	2005	2006	2007	04Q1	05Q1	06Q1	07Q1	04Q2	05Q2	06Q2	07Q2	04Q3	05Q3	06Q3	07Q3	04Q4	05Q4	06Q4	07Q4
P.3	Total final consumption expenditure	1,527,715	1,551,323	1,574,403	1,611,025	369,242	365,932	366,673	374,207	368,592	381,731	379,770	396,252	384,233	393,663	403,397	415,307	405,646	409,996	424,563	425,259
P.3	Household final consumption expenditure	1,156,115	1,178,425	1,187,103	1,221,804	274,748	276,092	273,492	282,491	276,739	287,655	286,013	300,046	293,995	302,201	306,713	316,598	310,633	312,477	320,885	322,668
P.3	NPISH final consumption expenditure	29,344	29,843	29,869	29,482	7,226	7,314	7,405	7,490	7,312	7,411	7,510	7,565	7,049	7,253	7,486	7,123	7,756	7,865	7,469	7,305
P.3	General government final consumption expenditure	342,256	343,055	357,431	359,739	87,268	82,526	85,776	84,226	84,541	86,665	86,247	88,641	83,189	84,209	89,198	91,586	87,257	89,654	96,209	95,286
P.5	Gross capital formation	291,365	371,070	392,907	411,348	53,757	88,423	117,972	92,032	85,611	97,006	125,153	105,185	46,066	69,786	72,339	82,575	105,930	115,857	77,439	131,554
P.51	Gross fixed capital formation	338,569	358,467	369,220	370,427	78,900	80,547	105,155	96,062	86,394	95,415	83,885	92,952	86,433	86,629	87,535	95,113	86,843	95,876	92,642	86,299
P.52	Changes in inventories	-47,994	12,416	24,969	41,892	-25,340	7,829	13,149	-3,969	-980	1,544	41,582	13,344	-40,564	-16,890	-14,882	-10,788	18,890	19,934	-14,880	43,305
P.53	Acquisitions and disposals of valuables	790	187	-1,282	-971	197	47	-332	-61	197	47	-314	-1,111	197	47	-314	-1,750	197	47	-323	1,950
P.6	Exports of goods and services	1,660,644	1,646,438	1,811,488	1,801,148	374,545	354,130	392,413	407,753	420,393	423,219	458,979	455,754	449,322	435,852	482,999	491,487	416,385	433,237	477,096	446,154
P.7	Imports of goods and services	1,758,749	1,790,129	1,939,114	1,914,389	394,558	397,098	449,805	429,937	445,179	462,076	506,125	483,366	436,970	435,310	483,350	495,189	482,042	495,645	499,834	505,897
	GDP	1,720,975	1,778,702	1,839,684	1,909,132	402,986	411,387	427,254	444,055	429,417	439,878	457,779	473,825	442,651	463,991	475,386	494,180	445,921	463,445	479,266	497,071
	Rate of growth	0.2	3.4	3.4	3.8	0.9	2.1	3.9	3.9	2.2	2.4	4.1	3.5	-0.8	4.8	2.5	4.0	-1.1	3.9	3.4	3.7

Lm'000

ESA 95 Code		2004	2005	2006	2007	04Q1	05Q1	06Q1	07Q1	04Q2	05Q2	06Q2	07Q2	04Q3	05Q3	06Q3	07Q3	04Q4	05Q4	06Q4	07Q4
P.3	Total final consumption expenditure	3,558,619	3,613,611	3,667,372	3,752,679	860,102	852,392	854,118	871,668	858,588	889,194	884,626	923,019	895,022	916,988	939,662	967,405	944,901	955,034	988,966	990,587
P.3	Household final consumption expenditure	2,693,024	2,744,992	2,765,206	2,846,038	639,991	643,121	637,065	658,027	644,628	670,056	666,231	698,919	684,824	703,939	714,449	737,475	723,580	727,876	747,461	751,614
P.3	NPISH final consumption expenditure	68,353	69,515	69,576	68,675	16,832	17,037	17,249	17,447	17,032	17,263	17,494	17,622	16,420	16,895	17,438	16,592	18,067	18,321	17,398	17,016
P.3	General government final consumption expenditure	797,242	799,103	832,590	837,966	203,280	192,234	199,804	196,194	196,928	201,875	200,901	206,478	193,778	196,154	207,775	213,338	203,254	208,838	224,107	221,957
P.5	Gross capital formation	678,698	864,361	915,227	958,183	125,220	205,970	274,801	214,377	199,420	225,963	291,528	245,015	107,305	162,558	168,505	192,348	246,751	269,874	180,384	306,438
P.51	Gross fixed capital formation	788,654	835,003	860,051	862,863	183,788	187,624	244,945	223,764	201,244	222,257	195,399	216,520	201,335	201,791	203,902	221,554	202,290	223,331	215,798	201,023
P.52	Changes in inventories	-111,796	28,922	58,162	97,582	-59,026	18,237	30,629	-9,245	-2,283	3,597	96,860	31,083	-94,489	-39,343	-34,666	-25,129	44,002	46,434	-34,661	100,874
P.53	Acquisitions and disposals of valuables	1,840	436	-2,986	-2,262	459	109	-773	-142	459	109	-731	-2,588	459	109	-731	-4,076	459	109	-752	4,542
P.6	Exports of goods and services	3,868,260	3,835,169	4,219,632	4,195,546	872,455	824,901	914,076	949,809	979,252	985,835	1,069,133	1,061,621	1,046,639	1,015,262	1,125,085	1,144,857	969,916	1,009,171	1,111,335	1,039,259
P.7	Imports of goods and services	4,096,783	4,169,879	4,516,921	4,459,327	919,073	924,990	1,047,764	1,001,484	1,036,988	1,076,348	1,178,954	1,125,940	1,017,866	1,014,000	1,125,903	1,153,480	1,122,856	1,154,542	1,164,300	1,178,423
	GDP	4,008,793	4,143,261	4,285,311	4,447,081	938,705	958,274	995,234	1,034,370	1,000,273	1,024,640	1,066,338	1,103,715	1,031,099	1,080,808	1,107,352	1,151,130	1,038,717	1,079,536	1,116,389	1,157,864
	Rate of growth	0.2	3.4	3.4	3.8	0.9	2.1	3.9	3.9	2.2	2.4	4.1	3.5	-0.8	4.8	2.5	4.0	-1.1	3.9	3.4	3.7

€'000

Table 10. Seasonally adjusted real GDP

		04Q1	04Q2	04Q3	04Q4	05Q1	05Q2	05Q3	05Q4	06Q1	06Q2	06Q3	06Q4	07Q1	07Q2	07Q3	07Q4
Quarter-on-quarter growth rates	Q _t /Q _{t-1}	-1.0	0.6	-0.5	0.7	1.0	1.1	1.3	0.4	1.0	0.6	0.5	1.0	1.4	0.9	1.1	0.9
Quarter-on-year growth rates	Q _t /Q _{t-4}	0.6	1.4	0.1	-0.2	1.9	2.4	4.3	4.0	3.9	3.4	2.5	3.1	3.4	3.8	4.5	4.3

Table 11. Gross Domestic Product (GDP) per capita

	2004Q1	2004Q2	2004Q3	2004Q4	2004
GDP (Lm'000)	449,848	477,339	499,592	494,197	1,920,976
GDP (€'000)	1,047,865	1,111,901	1,163,736	1,151,168	4,474,671
Average Total Population	400,097	400,636	401,477	402,430	401,160
GDP per capita (Lm)	1,124	1,191	1,244	1,228	4,789
GDP per capita (€)	2,619	2,775	2,899	2,861	11,154
	2005Q1	2005Q2	2005Q3	2005Q4	2005
GDP (Lm'000)	461,963	511,458	542,500	528,676	2,044,597
GDP (€'000)	1,076,085	1,191,377	1,263,685	1,231,483	4,762,630
Average Total Population	402,692	403,039	403,649	404,212	403,398
GDP per capita (Lm)	1,147	1,269	1,344	1,308	5,068
GDP per capita (€)	2,672	2,956	3,131	3,047	11,806
	2006Q1	2006Q2	2006Q3	2006Q4	2006
GDP (Lm'000)	494,758	546,342	570,113	563,854	2,175,067
GDP (€'000)	1,152,475	1,272,633	1,328,006	1,313,427	5,066,542
Average Total Population	405,589	406,289	407,023	407,810	406,678
GDP per capita (Lm)	1,220	1,345	1,401	1,383	5,348
GDP per capita (€)	2,841	3,132	3,263	3,221	12,458
	2007Q1	2007Q2	2007Q3	2007Q4	2007
GDP (Lm'000)	528,398	577,600	606,738	595,749	2,308,485
GDP (€'000)	1,230,837	1,345,462	1,413,335	1,387,738	5,377,372
Average Total Population	408,046	408,608	409,713	410,720	409,272
GDP per capita (Lm)	1,295	1,414	1,481	1,450	5,640
GDP per capita (€)	3,016	3,293	3,450	3,379	13,139

Table 12. Deflators (2000=100)

	2006Q4	2007Q4
Total final consumption expenditure		
Household final consumption expenditure	113.22	116.29
Food and non-alcoholic beverages	113.75	121.77
Alcoholic beverages and tobacco	131.24	132.24
Clothing and footwear	89.24	96.53
Housing, water, gas, electricity and other fuels	119.59	120.72
Furniture, household equipment and maintenance	107.55	108.56
Health	128.30	132.94
Transport	117.04	118.02
Communication	123.18	123.11
Recreation and culture	109.86	106.49
Education	131.02	138.86
Restaurants and hotels	120.19	125.30
Miscellaneous goods and services	119.52	119.87
NPISH final consumption expenditure	124.05	127.37
General government final consumption expenditure		
Wages and Salaries	124.65	128.19
Goods and Services	115.22	118.37
Gross capital formation	113.51	116.65
Exports of goods and services		
<i>goods</i>	90.14	93.42
<i>services</i>	137.59	136.05
Imports of goods and services		
<i>goods</i>	102.84	107.37
<i>services</i>	105.95	112.14

Methodological Notes

1. All data in this News Release are in line with the European System of Accounts (ESA95) Manual (ISBN 92-827-7954-8). This system of accounts is mandatory for all EU Member States. The accounts are subject to audit by the European Court of Auditors and Eurostat's GNI Committee to ensure reliability, comparability and exhaustiveness.
2. All data in this release should be considered as provisional and therefore subject to revision.
3. Data users must be aware that the industrial activities of General Government are spread over 11 different NACE categories (at A60 level) and include local councils and extra-budgetary units that are financially dependent on government. NACE 75 is the largest category and in terms of gross value added represents approximately 38 per cent of the General Government sector in 2007.
4. In all tables, data denominated in Euros is arrived at by converting using the fixed exchange rate (Lm0.4293=€1) to the entire series. This is in line with Eurostat's proposal and is done so as not to distort growth rates in the GDP and GDP per capita in Maltese Liri. The Euro equivalent is for information purposes only. Figures may not add up exactly due to rounding.
5. The growth rates in Table 10 are derived from changes in seasonally adjusted GDP. Seasonal adjustment of a time-series is undertaken using a software program recommended by Eurostat, which is called Demetra. For further details refer to News Releases 58/2006 and 140/2006.

Note on Revisions of GDP Statistical Data

The European Statistics Code of Practice issued in 2005 and adopted by Eurostat and by the EU National Statistical Institutes recommends that "revisions follow standard, well-established and transparent procedures". Furthermore, the ECOFIN Council concluded, on 7 November 2006, that "ways should be considered to ensure a coherent approach as regards the public communication of major statistical revisions in Member States".

The NSO Policy for Revisions of Official Statistics (2003) stipulates that statistical revisions may be effected for at least eight reasons:

- (i) incorporation of source data that is more complete or superior;
- (ii) incorporation of source data that bears out concepts more closely;
- (iii) replacement by source data of judgment values or values derived largely by statistical techniques;
- (iv) incorporation of updated seasonal factors;
- (v) updating of base period;
- (vi) changes in statistical methods;
- (vii) changes in concepts, definitions and classifications; and
- (viii) correction of errors in source data and computations.

Impact of revisions

The revisions carried out in this release are minor, and result from more updated sources and the availability of annual audited financial statements of various enterprises. The impact of the revisions carried out range from -0.2 per cent to 0.6 per cent, as shown in the tables below.

Table N1

GDP at current prices

Lm million

Period	Published	Revised
2004	1,921.0	1,921.0 (-0.0%)
2005	2,044.6	2,044.6 (+0.0%)
2006	2,172.4	2,175.1 (+0.1%)
2007Q1	525.4	528.4 (+0.6%)
2007Q2	576.3	577.6 (+0.2%)
2007Q3	607.7	606.7 (-0.2%)

Table N2

GDP at constant prices

Lm million

Period	Published	Revised
2004	1,720.5	1,720.9 (+0.0%)
2005	1,777.1	1,778.7 (+0.1%)
2006	1,837.1	1,839.7 (+0.1%)
2007Q1	442.6	444.1 (+0.3%)
2007Q2	473.3	473.8 (+0.1%)
2007Q3	494.6	494.2 (-0.1%)

Note: Data in the "Published" column refer to the position as at 7/12/07.