

News Release



Date: 28 March 2008
No. : 53/2008
Time of release: 11.00 hrs

Tourism

Departing tourists: February 2008

Inbound tourists in February 2008 are estimated to have increased by 13.4 per cent when compared to the same month in 2007. Year on year, total nights spent increased by 1.6 per cent.

February 2008

According to the ongoing frontier survey, tourist departures in February 2008 are estimated at 57,335, implying an increase of 13.4 per cent over the same month in 2007. The increase reflects primarily a rise in holiday makers, mainly from the German, Spanish and Italian markets. Tourists coming from the UK registered a decrease.

Meanwhile, total nights spent increased by 1.6 per cent when compared to the same month in 2007. Year on year, total nights spent in private accommodation increased by 8.3 per cent, while those in collective accommodation remained relatively unchanged. Overall, the average length of stay is calculated at 8.1 nights, shorter by one night when compared to February 2007.

Theme:
Industry and Services

January-February 2008

Inbound tourists for the first two months are estimated at 121,185, implying an increase of 18.5 per cent over the corresponding period a year ago. The growth was primarily attributable to an increase in holiday visits, mainly from the German, Spanish and French markets. The British market registered a decrease.

Table 6 shows that 86.6 per cent of all inbound visits comprised tourists coming from EU Member States. Although there was an increase in repeat tourism, data show that the overall increase was primarily characterised by a rise in first-time visits. The latter are estimated to account for 63.8 per cent of total visits. The largest age bracket comprised tourists aged 45-64, albeit the strongest increase is attributable to the 25-44 age bracket.

Total nights spent increased by 7.7 per cent when compared to the same period in 2007. Nights spent in private accommodation increased by 47.1 per cent while those in collective accommodation registered a decline of 1.5 per cent. Tourist nights in rented, owner-occupied and in lodging with family and friends registered increases. With regard to guest-nights in collective accommodation, the 5-star category and those establishments classified as other collective accommodation registered increases, while the 4- and 3-star categories registered decreases. The average length of stay is calculated at 8.0 nights, down by 0.8 nights when compared to last year's level.

Compiled by:

Tourism Statistics Unit
e-mail: tourism.nso@gov.mt
Tel: 25997329

In the period under review, total tourist expenditure is estimated at €80.2 million, a decrease of 0.9 per cent over 2007. The growth in non-package and other expenditure was offset by a reduction in package expenditure. As from 2008, the number of tourists visiting Malta on direct bookings and non-package trips exceeded package ones, the latter accounting for 41.8 per cent of the total.

The survey results indicate that the per capita total expenditure is estimated at €672, down by 16.2 per cent when compared to the corresponding period in the preceding year ■

The monthly calendar of NSO News Releases may be consulted on the Office's website at www.nso.gov.mt

National Statistics Office
Library & Information Unit
Lascaris, Valletta VLT 2000, Malta
Tel: (+356) 25997219
Fax: (+356) 25997205
e-mail: nso@gov.mt
<http://www.nso.gov.mt>

Table 1. Profile of departing tourists

	February			absolute change	percentage change
	2006	2007	2008	2008/2007	2008/2007
	Total	47,301	50,547	57,335	6,788
Mode of travel:					
Air	47,263	50,187	57,165	6,978	13.9
Sea	38	360	170	-190	-52.8
Sex:					
Males	27,783	27,832	30,338	2,506	9.0
Females	19,518	22,715	26,997	4,282	18.9
Age group:					
0-24	2,318	4,023	6,261	2,238	55.6
25-44	15,474	16,154	18,382	2,228	13.8
45-64	22,164	23,240	24,583	1,343	5.8
65+	7,345	7,130	8,109	979	13.7
Markets:					
EU	41,459	43,556	49,354	5,798	13.3
Euro area	16,530	17,107	23,933	6,826	39.9
Non-EU	5,842	6,991	7,981	990	14.2
Purpose of visit:					
Holiday	36,035	41,228	47,090	5,862	14.2
Business and professional	8,951	6,716	6,708	-8	-0.1
Other	2,315	2,603	3,537	934	35.9
Organisation of stay					
Package	31,940	25,897	27,294	1,397	5.4
Non-package	15,361	24,650	30,041	5,391	21.9
Frequency					
First-time tourists	30,019	31,042	37,332	6,290	20.3
Repeat tourists	17,282	19,505	20,003	498	2.6
less than once a year	13,624	14,474	13,911	-563	-3.9
more than twice a year	3,658	5,031	6,092	1,061	21.1
Duration of visit:					
1-3 nights	7,695	7,912	9,640	1,728	21.8
4-6 nights	7,531	13,090	14,515	1,425	10.9
7+ nights	32,075	29,545	33,180	3,635	12.3
Average length of stay (nights)	10.0	9.1	8.1	-1.0	-11.0

Table 2. Departing tourists, by type of accommodation

	February			persons	
				absolute change	percentage change
	2006	2007	2008	2008/2007	2008/2007
Total	47,301	50,547	57,335	6,788	13.4
Private accommodation	5,255	6,732	9,731	2,999	44.5
Collective accommodation	42,046	43,815	47,604	3,789	8.6
Hotels	40,257	41,317	43,328	2,011	4.9
Other collective accommodation *	1,789	2,498	4,276	1,778	71.2

Table 3. Total nights spent by departing tourists, by type of accommodation

	February			nights	
				absolute change	percentage change
	2006	2007	2008	2008/2007	2008/2007
Total	474,985	458,672	465,989	7,317	1.6
Private accommodation	76,759	83,586	90,482	6,896	8.3
Collective accommodation	398,226	375,086	375,507	421	0.1
Hotels	372,790	347,977	330,002	-17,975	-5.2
Other collective accommodation *	25,436	27,109	45,505	18,396	67.9

Table 4. Total expenditure by departing tourists, by expenditure categories

	February			€ 000s	
				absolute change	percentage change
	2006	2007	2008	2008/2007	2008/2007
Total	33,377	37,761	36,814	-946	-2.5
Package	15,710	13,868	13,293	-574	-4.1
Non-package	6,217	9,932	9,129	-803	-8.1
Air/sea fares	3,588	6,088	5,270	-818	-13.4
Accommodation	2,629	3,844	3,859	15	0.4
Other expenditure	11,450	13,961	14,392	431	3.1

* Comprises apart-hotels, guesthouses, hostels and tourist villages
 Estimates for expenditure are rounded to the nearest thousand

Table 5. Departing tourists, nights spent and total expenditure, by country of residence

	February			absolute change	percentage change
	2006	2007	2008	2008/2007	2008/2007
Total tourists	47,301	50,547	57,335	6,788	13.4
Austria	965	889	568	-321	-36.1
Belgium	582	618	995	377	61.0
France	2,517	2,275	2,778	503	22.1
Germany	6,810	6,155	8,540	2,385	38.7
Ireland	484	1,329	1,843	514	38.7
Italy	3,332	3,854	4,955	1,101	28.6
Libya	679	523	706	183	35.0
Netherlands	1,014	853	1,046	193	22.6
Russia	432	470	320	-150	-31.9
Scandinavia*	1,064	1,943	2,466	523	26.9
Spain	534	285	1,642	1,357	-
Switzerland	534	1,042	1,259	217	20.8
United Kingdom	23,814	24,410	22,857	-1,553	-6.4
USA	723	755	604	-151	-20.0
Other	3,817	5,146	6,756	1,610	31.3
Total nights	474,985	458,672	465,989	7,317	1.6
Austria	7,343	5,370	3,410	-1,960	-36.5
Belgium	7,996	5,463	5,068	-395	-7.2
France	17,881	20,852	17,158	-3,694	-17.7
Germany	66,739	41,893	58,048	16,155	38.6
Ireland	4,553	8,069	12,815	4,746	58.8
Italy	12,500	16,998	24,313	7,315	43.0
Libya	6,939	2,375	4,625	2,250	94.7
Netherlands	8,554	6,060	5,595	-465	-7.7
Russia	4,166	9,260	2,213	-7,047	-76.1
Scandinavia*	7,296	15,453	18,480	3,027	19.6
Spain	2,378	903	10,410	9,507	-
Switzerland	3,882	6,246	8,765	2,519	40.3
United Kingdom	283,822	270,735	246,371	-24,364	-9.0
USA	5,927	4,342	4,428	86	2.0
Other	35,009	44,653	44,290	-363	-0.8
Total expenditure (€ '000s)	33,377	37,761	36,814	-947	-2.5
Austria	651	651	418	-233	-35.8
Belgium	342	519	630	111	21.4
France	1,825	1,807	1,851	44	2.4
Germany	4,618	3,941	4,893	952	24.2
Ireland	466	844	1,381	537	63.6
Italy	1,830	2,115	2,573	458	21.7
Libya	416	661	743	82	12.4
Netherlands	840	668	693	25	3.7
Russia	328	428	205	-223	-52.1
Scandinavia*	795	1,407	1,432	25	1.8
Spain	325	138	1,245	1,107	-
Switzerland	399	818	796	-22	-2.7
United Kingdom	17,071	18,572	14,974	-3,598	-19.4
USA	521	549	328	-221	-40.3
Other	2,950	4,643	4,652	9	0.2

* Denmark, Finland, Norway and Sweden

Estimates for expenditure are rounded to the nearest thousand

Table 6. Profile of departing tourists

	January-February			absolute change	percentage change
	2006	2007	2008	2008/2007	2008/2007
Total	97,825	102,283	121,185	18,902	18.5
Mode of travel:					
Air	97,358	101,656	119,765	18,109	17.8
Sea	467	627	1,420	793	126.5
Sex:					
Males	54,761	54,396	65,850	11,454	21.1
Females	43,064	47,887	55,335	7,448	15.6
Age group:					
0-24	4,723	8,051	10,942	2,891	35.9
25-44	32,250	33,985	43,222	9,237	27.2
45-64	47,109	46,883	51,907	5,024	10.7
65+	13,743	13,364	15,114	1,750	13.1
Markets:					
EU	83,695	87,649	104,936	17,287	19.7
Euro area	33,094	34,502	51,898	17,396	50.4
Non-EU	14,130	14,634	16,249	1,615	11.0
Purpose of visit:					
Holiday	78,566	85,686	99,771	14,085	16.4
Business and professional	15,707	12,431	16,538	4,107	33.0
Other	3,552	4,166	4,876	710	17.0
Organisation of stay					
Package	61,965	57,798	50,678	-7,120	-12.3
Non-package	35,860	44,485	70,507	26,022	58.5
Frequency					
First-time tourists	59,864	60,515	77,359	16,844	27.8
Repeat tourists	37,961	41,768	43,826	2,058	4.9
less than once a year	27,825	29,910	28,826	-1,084	-3.6
more than twice a year	10,136	11,858	15,000	3,142	26.5
Duration of visit:					
1-3 nights	14,023	14,649	22,210	7,561	51.6
4-6 nights	15,930	20,589	30,661	10,072	48.9
7+ nights	67,872	67,045	68,314	1,269	1.9
Average length of stay (nights)	9.9	8.8	8.0	-0.8	-9.1

Chart 1 Percentage distribution of departing tourists, by purpose of visit
January-February 2006-2008

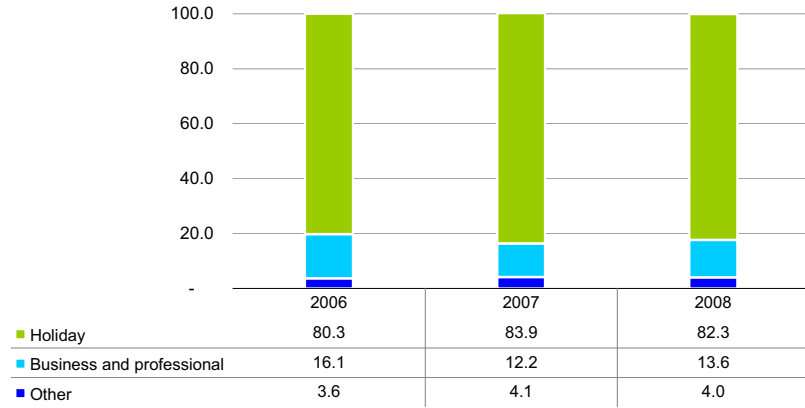
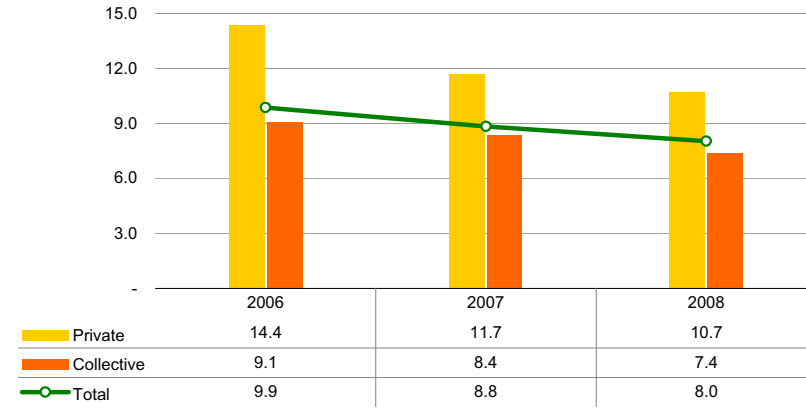


Chart 3 Average length of stay (nights), by type of accommodation
January-February 2006-2008



9

Chart 2 Average length of stay (nights), by purpose of visit
January-February 2006-2008

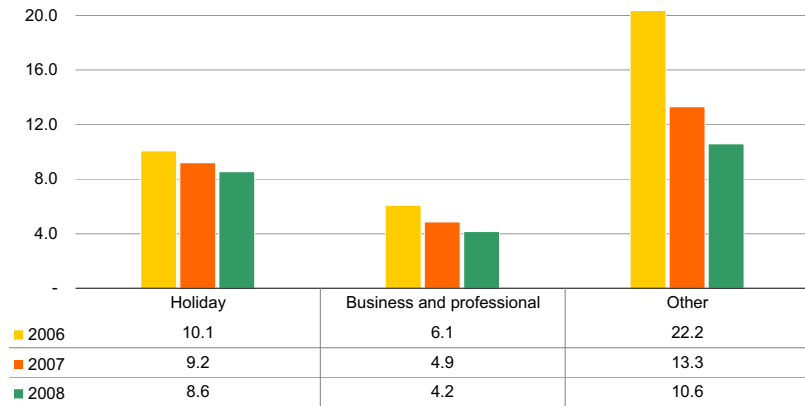


Chart 4 Departing tourists, by night bracket
January-February 2006-2008

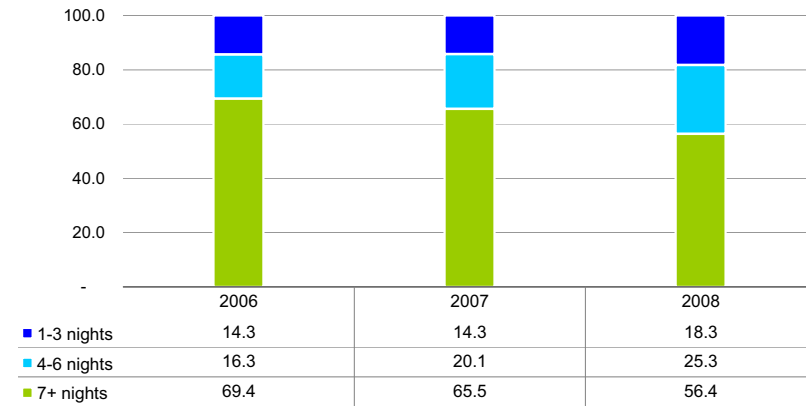


Table 7. Departing tourists, by type of accommodation

	January-February			persons	
				absolute change	percentage change
	2006	2007	2008	2008/2007	2008/2007
Total	97,825	102,283	121,185	18,902	18.5
Private accommodation	14,664	14,565	23,406	8,841	60.7
Rented	4,852	4,703	6,663	1,960	41.7
Staying with friends/relatives	6,878	7,863	13,055	5,192	66.0
Owner-occupied	2,934	1,999	3,688	1,689	84.5
Collective accommodation	83,161	87,718	97,779	10,061	11.5
Hotels	78,681	82,491	89,398	6,907	8.4
of which:					
5 Star	20,955	23,672	27,388	3,716	15.7
4 Star	40,031	40,298	41,541	1,243	3.1
3 Star	17,199	15,172	14,391	-781	-5.1
Other collective accommodation *	4,480	5,227	8,381	3,154	60.3

Table 8. Total nights spent by departing tourists, by type of accommodation

	January-February			nights	
				absolute change	percentage change
	2006	2007	2008	2008/2007	2008/2007
Total	964,535	904,270	973,814	69,544	7.7
Private accommodation	210,683	170,447	250,660	80,213	47.1
Rented	84,481	69,612	73,563	3,951	5.7
Staying with friends/relatives	94,557	78,100	137,976	59,876	76.7
Owner-occupied	31,645	22,735	39,121	16,386	72.1
Collective accommodation	753,852	733,823	723,154	-10,669	-1.5
Hotels	702,632	687,121	646,694	-40,427	-5.9
of which:					
5 Star	123,530	131,149	134,407	3,258	2.5
4 Star	387,415	384,309	363,878	-20,431	-5.3
3 Star	187,550	150,030	107,889	-42,141	-28.1
Other collective accommodation *	51,220	46,702	76,460	29,758	63.7

* Comprises apart-hotels, guesthouses, hostels and tourist villages

Table 9. Departing tourists, nights spent and total expenditure, by country of residence

	January-February			absolute change	percentage change
	2006	2007	2008	2008/2007	2008/2007
	Total tourists	97,825	102,283	121,185	18,902
Austria	1,639	1,288	1,133	-155	-12.0
Belgium	1,517	1,362	2,219	857	62.9
France	5,369	4,289	7,197	2,908	67.8
Germany	11,406	10,623	16,029	5,406	50.9
Ireland	848	1,985	3,429	1,444	72.7
Italy	8,307	10,665	13,175	2,510	23.5
Libya	1,718	1,218	1,065	-153	-12.6
Netherlands	1,884	1,904	2,330	426	22.4
Russia	893	1,451	1,146	-305	-21.0
Scandinavia*	2,151	3,432	4,766	1,334	38.9
Spain	1,104	831	3,995	3,164	-
Switzerland	1,104	1,495	1,719	224	15.0
United Kingdom	47,159	47,522	44,954	-2,568	-5.4
USA	1,544	1,411	1,789	378	26.8
Other	11,182	12,807	16,239	3,432	26.8
Total nights	964,535	904,270	973,814	69,544	7.7
Austria	10,454	7,573	6,488	-1,085	-14.3
Belgium	13,114	12,311	15,491	3,180	25.8
France	31,229	32,968	39,525	6,557	19.9
Germany	114,382	79,160	114,332	35,172	44.4
Ireland	7,775	14,470	25,768	11,298	78.1
Italy	41,556	56,301	68,329	12,028	21.4
Libya	14,603	7,040	6,210	-830	-11.8
Netherlands	16,389	14,011	15,733	1,722	12.3
Russia	11,885	18,819	10,057	-8,762	-46.6
Scandinavia*	16,008	27,710	34,414	6,704	24.2
Spain	6,344	4,525	23,981	19,456	-
Switzerland	11,870	9,178	16,832	7,654	83.4
United Kingdom	539,424	502,945	464,695	-38,250	-7.6
USA	12,177	9,924	15,627	5,703	57.5
Other	117,325	107,335	116,332	8,997	8.4
Total expenditure (€ '000s)	74,963	80,954	80,219	-735	-0.9
Austria	1,021	919	809	-110	-12.0
Belgium	994	1,100	1,507	407	37.0
France	4,056	3,288	4,561	1,273	38.7
Germany	8,172	7,043	9,333	2,290	32.5
Ireland	813	1,487	2,457	970	65.2
Italy	5,301	7,076	6,771	-305	-4.3
Libya	1,239	1,243	933	-310	-24.9
Netherlands	1,444	1,469	1,712	243	16.5
Russia	864	1,259	1,054	-205	-16.3
Scandinavia*	1,616	2,437	3,006	569	23.3
Spain	943	544	2,256	1,712	-
Switzerland	830	1,209	1,193	-16	-1.3
United Kingdom	37,386	38,254	30,416	-7,838	-20.5
USA	1,309	1,612	978	-634	-39.3
Other	8,975	12,014	13,233	1,219	10.1

* Denmark, Finland, Norway and Sweden

Estimates for expenditure are rounded to the nearest thousand

Table 10. Total expenditure by departing tourists

€ 000s

	Package expenditure	Non-package expenditure		Other expenditure	Total
		Air/sea fares	Accommodation		
January-February 2008					
Total	25,754	13,517	9,513	31,435	80,219
Austria	320	138	143	208	809
Belgium	620	263	128	496	1,507
France	1,706	875	766	1,214	4,561
Germany	2,923	1,683	1,599	3,128	9,333
Ireland	585	321	361	1,190	2,457
Italy	1,783	1,393	1,160	2,435	6,771
Libya	20	358	153	402	933
Netherlands	431	284	239	758	1,712
Russia	287	256	138	373	1,054
Scandinavia*	1,097	452	360	1,097	3,006
Spain	438	225	343	1,250	2,256
Switzerland	461	213	104	415	1,193
United Kingdom	11,501	3,892	2,606	12,417	30,416
USA	0	340	219	419	978
Other	3,582	2,824	1,194	5,633	13,233
January-February 2007					
Total	32,281	11,530	6,653	30,490	80,954
Austria	420	164	67	268	919
Belgium	386	166	140	408	1,100
France	1,224	652	356	1,056	3,288
Germany	3,004	971	933	2,135	7,043
Ireland	437	179	180	691	1,487
Italy	2,326	1,090	740	2,920	7,076
Libya	101	499	104	539	1,243
Netherlands	527	227	215	500	1,469
Russia	482	255	92	430	1,259
Scandinavia*	1,036	391	153	857	2,437
Spain	231	83	66	164	544
Switzerland	339	338	195	337	1,209
United Kingdom	17,628	3,548	2,206	14,872	38,254
USA	41	365	274	932	1,612
Other	4,099	2,602	932	4,381	12,014
January-February 2006					
Total	32,983	9,202	6,512	26,266	74,963
Austria	535	112	69	305	1,021
Belgium	443	166	99	286	994
France	1,348	870	703	1,135	4,056
Germany	3,786	880	950	2,556	8,172
Ireland	306	75	164	268	813
Italy	1,826	1,026	778	1,671	5,301
Libya	178	244	270	547	1,239
Netherlands	536	241	140	527	1,444
Russia	344	108	132	280	864
Scandinavia*	747	266	142	461	1,616
Spain	182	220	179	362	943
Switzerland	526	39	53	212	830
United Kingdom	19,092	2,849	1,566	13,879	37,386
USA	335	235	232	507	1,309
Other	2,799	1,871	1,035	3,270	8,975

* Denmark, Finland, Norway and Sweden

Estimates for expenditure are rounded to the nearest thousand

Table 11. Per capita expenditure by departing tourists

€

	Package expenditure	Non-package expenditure		Other Expenditure	Total ^w
		Air/sea fares	Accommodation		
January-February 2008					
Total	508	192	152	259	672
Austria	466	309	322	184	715
Belgium	600	222	124	224	688
France	528	221	216	169	646
Germany	487	168	173	195	591
Ireland	512	141	185	347	735
Italy	372	166	143	185	517
Libya	402	353	166	377	891
Netherlands	476	199	174	325	739
Russia	833	319	183	325	927
Scandinavia*	448	196	170	230	638
Spain	364	81	125	313	566
Switzerland	601	224	138	242	711
United Kingdom	555	161	134	276	691
USA		190	142	234	567
Other	487	318	142	347	819
January-February 2007					
Total	559	262	170	298	802
Austria	625	267	109	208	714
Belgium	497	284	240	300	808
France	582	298	179	246	775
Germany	494	223	216	201	672
Ireland	528	155	163	348	753
Italy	460	194	146	274	671
Libya	510	572	126	443	1,106
Netherlands	488	276	261	263	772
Russia	568	425	167	296	874
Scandinavia*	620	322	143	250	804
Spain	470	244	194	197	654
Switzerland	583	370	240	225	825
United Kingdom	596	198	149	313	815
USA	440	277	234	660	1,167
Other	528	482	187	342	928
January-February 2006					
Total	532	257	215	269	779
Austria	471	222	154	186	628
Belgium	513	254	199	188	675
France	492	331	290	211	766
Germany	469	265	309	224	723
Ireland	610	215	473	316	958
Italy	480	228	181	201	643
Libya	435	186	215	318	727
Netherlands	491	304	188	280	772
Russia	631	311	380	313	968
Scandinavia*	515	378	237	214	762
Spain	529	289	251	328	865
Switzerland	580	195	265	192	751
United Kingdom	560	218	172	294	807
USA	481	277	309	328	867
Other	528	319	190	292	810

* Denmark, Finland, Norway and Sweden

^w stands for weighted average - further detail can be looked up in the methodological notes - Note 6

Methodological Notes

1. The results in this release are based on the ongoing frontier survey known as TOURSTAT. All the detailed distribution is survey-based. Administrative records are used as a supplementary source for the calibration of the survey aggregates. The exercise is in the main a bottom-up approach including a calibrating weight to re-align the survey results to the true population of total passenger departures (net of transits). Yet we advise our users to exercise caution when analysing details that involve estimates of less than 1,000 tourists since such estimates may suffer from variations attributable to low frequency in the sample frame (sampling errors). There are also limitations related to non-sampling errors, namely those linked to respondents' likelihood and willingness to provide proper information and those related to language barriers.
2. Tourist air departures are collected through a continuous survey carried out at the departure lounge of Malta International Airport (MIA). A two-stage sample design is used for this survey. In the first stage alternate days are selected. Then within each shift a sample of passengers is selected systematically. Personal interviews are carried out. Monthly response rates of around 90 per cent are achieved.
3. Tourist sea departures are collected through a regular survey that is carried out at the Valletta International Seaport Terminal (VISET). Ferry sailings on every alternate day are selected. Departing passengers are interviewed personally. On average a response rate of 93 per cent is recorded for this survey.
4. The main variables collected in these surveys include the following:

Nationality	Number of nights stayed
Country of residence	Type of accommodation used
Flight/Sailing	Locality in Malta stayed longest
Final destination	Organisation of trip
Sex and age	Form of transport used
Purpose of visit	Expenditure (package/non-package/other)
Frequency of visit	

5. The expenditure data contained in this release should not be equated to national tourism earnings. Such expenditure includes elements that are earned by enterprises outside the Maltese economic territory.
6. The total per capita expenditure is a weighted average of the 'package' and 'non-package' expenditure categories based on the respective number of tourists in each category, plus the simple average of the 'other' expenditure categories.
7. The monthly passenger departures data published by the Malta International Airport cannot be equated to departing tourists because the former is inclusive of departing Maltese and transit passengers. As a result, the monthly tourism statistics published by the NSO are always lower than the combined passenger departures data available from the airport and seaport.

8. Definitions:

Usual environment of a person consists of the direct vicinity of his/her home and place of work or study, and other places frequently visited.

Visitors comprise tourists and same-day visitors. Visitors are distinguished from other travellers according to the following criteria:

- the trip should be to a place other than that of the usual environment;
- the stay in the place visited should not last more than 12 consecutive months;
- the main purpose of visit should be other than the exercise of an activity remunerated from within the place visited.

International tourist satisfies the criteria mentioned earlier regarding visitors. Additionally, international tourists must stay at least one night in a collective or private accommodation in the country visited.

International same-day visitor is an international visitor who does not spend at least one night in collective or private accommodation.

7. The data in this release are not normally subject to revision.