

News Release



Date: 10 April 2008
No. : 59/2008
Time of release: 11.00 hrs

Theme: Transport

Compiled by:

Tourism & Transport Statistics Unit
e-mail: tourism.nso@gov.mt
Tel: 25997329

The monthly calendar of NSO News Releases may be consulted on the Office's website at www.nso.gov.mt

Transport

Sea transport between Malta and Gozo: January-March 2008

In the first quarter of this year, sea transport between Malta and Gozo registered increases.

In the first quarter of 2008, commuters between Malta and Gozo increased by 12.4 per cent, totalling 800,394. Furthermore, the number of vehicles carried by scheduled vessels went up by 10.2 per cent, totalling 232,322 (see Tables 1-2).

On breaking up the reference quarter into the respective months, the data show that, consistently with previous years, March registered the greatest loads (see Table 3).

The increase in demand, was serviced by an increase in supply. The number of trips in the first quarter stood at 4,731, implying an increase of 4.6 per cent over the comparable period last year (see Tables 1-2). The highest number of trips was recorded in March - 1,684 or 35.6 per cent of the total number of trips for the period under review (see Table 3).

Table 2 shows that during the first quarter in 2008, the *Gaudos* and the *Malita* decreased their trips by 216 and 48 respectively, when compared to the corresponding period last year. Conversely, the *Ta' Pinu* vessel increased its trips by 472, to compensate for the decrease in the load of the other two vessels and to cater for the increase in demand.

Charts 1 and 2 show the monthly average number of passengers and vehicles per trip respectively, in respect of each vessel. *Malita's* average is consistently higher compared to the other two vessels due to its greater vehicle-carrying capacity ■

National Statistics Office
Library & Information Unit
Lascaris, Valletta VLT 2000, Malta
Tel: (+356) 25997219
Fax: (+356) 25997205
e-mail: nso@gov.mt
<http://www.nso.gov.mt>

Table 1. Sea transport between Malta and Gozo: 2006-2008

		Quarterly			absolute change	percentage change
		2006	2007	2008	2007/2008	2007/2008
Trips	Total	19,209	19,714			
	Jan-Mar	4,310	4,523	4,731	208	4.6
	Apr-Jun	4,650	4,711			
	Jul-Sep	5,558	5,741			
	Oct-Dec	4,691	4,739			
Cars and cargo	Total	937,138	1,013,180			
	Jan-Mar	184,172	210,814	232,322	21,508	10.2
	Apr-Jun	236,439	253,356			
	Jul-Sep	298,066	324,883			
	Oct-Dec	218,461	224,127			
Passengers	Total	3,554,714	3,795,121			
	Jan-Mar	618,760	711,961	800,394	88,433	12.4
	Apr-Jun	947,273	991,615			
	Jul-Sep	1,216,257	1,305,710			
	Oct-Dec	772,424	785,835			

Table 2. Sea transport between Malta and Gozo, by vessel: 2006-2008

		1st Quarter			absolute change	percentage change
		2006	2007	2008	2007/2008	2007/2008
Trips	Total	4,310	4,523	4,731	208	4.6
	Gaudos	1,174	1,274	1,058	-216	-17.0
	Ta' Pinu	1,508	1,395	1,867	472	33.8
	Malita	1,628	1,854	1,806	-48	-2.6
Cars and cargo	Total	184,172	210,814	232,322	21,508	10.2
	Gaudos	43,738	51,418	49,793	-1,625	-3.2
	Ta' Pinu	56,617	59,409	83,270	23,861	40.2
	Malita	83,817	99,987	99,259	-728	-0.7
Passengers	Total	618,760	711,961	800,394	88,433	12.4
	Gaudos	153,776	172,184	181,958	9,774	5.7
	Ta' Pinu	188,160	207,086	282,688	75,602	36.5
	Malita	276,824	332,691	335,748	3,057	0.9

Table 3. Monthly sea transport between Malta and Gozo: 2006-2008

		Monthly			absolute change	percentage change
		2006	2007	2008	2007/2008	2007/2008
		Trips	Total	4,310	4,523	4,731
	January	1,438	1,500	1,497	-3	-0.2
	February	1,342	1,443	1,550	107	7.4
	March	1,530	1,580	1,684	104	6.6
Cars and cargo	Total	184,172	210,814	232,322	21,508	10.2
	January	56,202	65,105	68,919	3,814	5.9
	February	59,998	69,076	77,992	8,916	12.9
	March	67,972	76,633	85,411	8,778	11.5
Passengers	Total	618,760	711,961	800,394	88,433	12.4
	January	176,501	207,709	217,514	9,805	4.7
	February	198,084	226,986	258,820	31,834	14.0
	March	244,175	277,266	324,060	46,794	16.9

Chart 1. Monthly average number of passengers per trip: 2006-2008

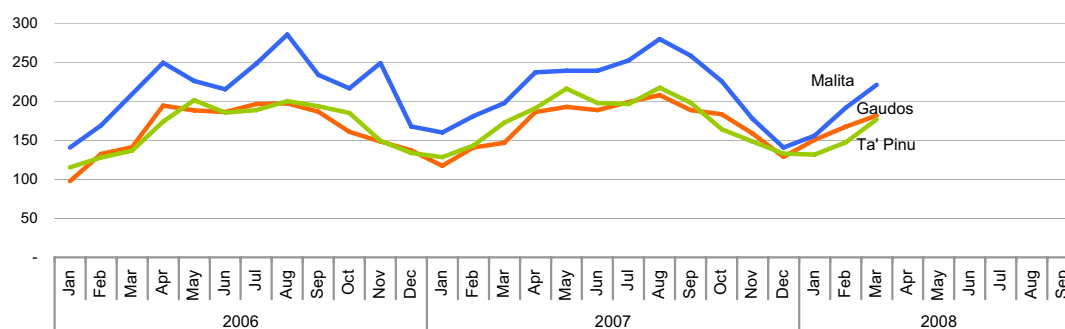
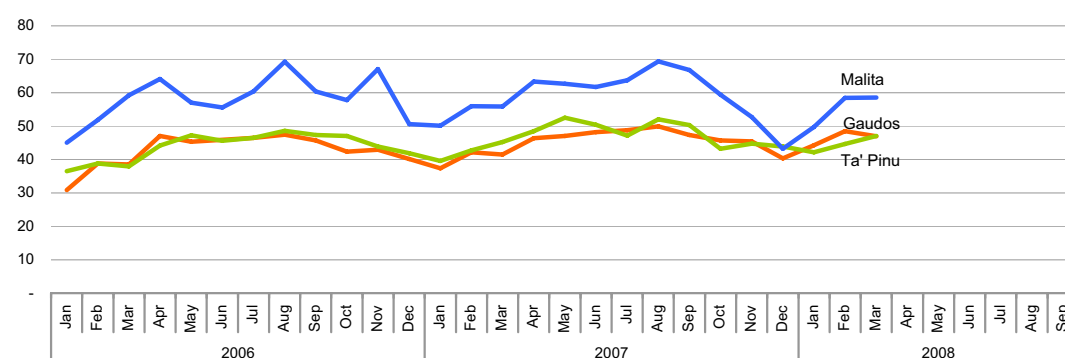


Chart 2. Monthly average number of cars and cargo per trip: 2006-2008



Methodological Notes

1. For the purposes of this News Release, Scheduled Transport refers to the services of the Gozo Channel Co. Ltd.
2. The data in this release are compiled from administrative information provided by the Gozo Channel Co. Ltd.
3. The data are full and are not normally subject to revision.
4. The table below illustrates the passengers and vehicles capacity by each Gozo Channel vessel:

Carrying capacity

Vessel	Vehicles	Passengers
Gaudos	72	900
Malita	138	900
Ta' Pinu	72	900