

10 January 2014 | 1100 hrs | 006/2014

In the fourth quarter of 2013, sea transport between Malta and Gozo registered increases in the number of vehicles, commuters and trips compared to the corresponding period of 2012.

Sea transport between Malta and Gozo: Q4/2013

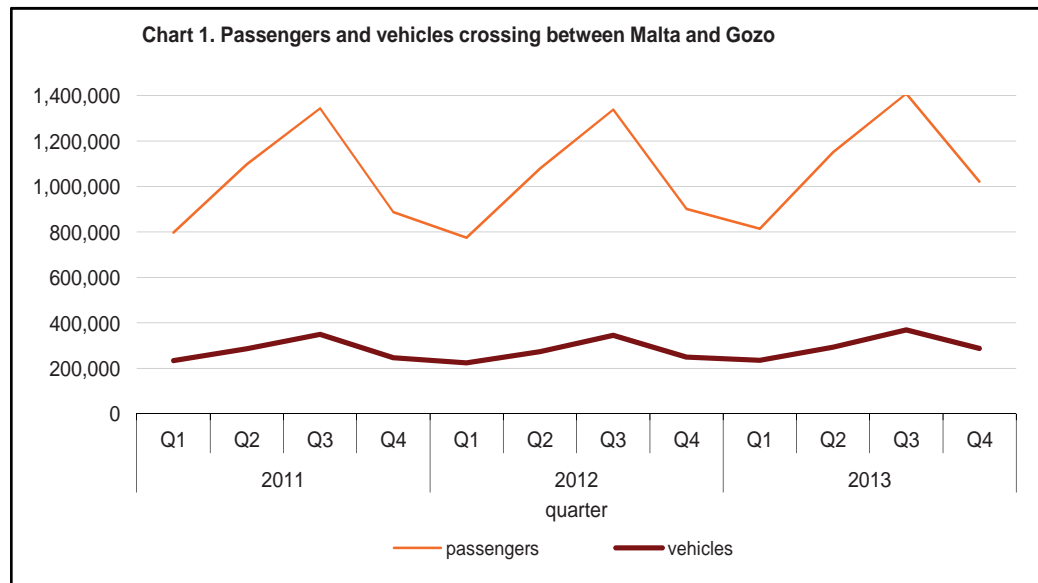
A total of 1,021,615 commuters travelled between Malta and Gozo during the fourth quarter last year, up by 13.4 per cent when compared to the corresponding period in 2012. This is in part due to the Free Gozo Weekend scheme in November and the Live Crib Village at Għajnsielem in December. The highest number of commuters was recorded in October - 389,513, or 38.1 per cent of the total for the quarter (Table 2). The number of vehicles carried by scheduled vessels advanced by 15.5 per cent, totalling 287,872 (Table 1).

The number of trips in the period under review stood at 4,772, an increase of 3.5 per cent over the corresponding period in 2012 (Table 1). The majority of trips took place in November - 1,598 or 33.5 per cent of total trips for the quarter (Table 2).

Annual perspective

On an annual basis, 2013 saw increases in the number of vehicles, commuters and trips between Malta and Gozo. Overall, the number of trips went up by 115, or 0.6 per cent, over 2012 (Table 2). Commuters increased by 302,576, or 7.4 per cent, over the previous year, while the number of vehicles crossing between Malta and Gozo went up by 94,170, or 8.6 per cent (Table 1).

As in previous years, August recorded the highest number of trips - 1,872, or 9.5 per cent of the total. August also registered the largest share of vehicles and commuters crossing between the two islands - 130,623 and 500,226 respectively (Table 2) ■



Compiled by:

**Unit A4: International
Trade and Transport
Statistics**

**Directorate A: Economic
Statistics**

Further information on data:

Mr Anthony PORTELLI
T. +356 2599 7160
E. anthony.portelli@gov.mt

Kindly indicate source when quoting from this release.
The advance release calendar may be consulted at www.nso.gov.mt

Issued by: **External Cooperation and Communication Unit, National Statistics Office, Lascaris, Valletta VLT 2000, Malta.**
T. +356 2599 7219 F. +356 2599 7205 E. nso@gov.mt

Table 1. Sea transport between Malta and Gozo: 2011-2013

		Quarterly			absolute change	percentage change
		2011	2012	2013	2013/2012	2013/2012
		Trips	Total	19,816	19,515	19,630
	Jan-Mar	4,624	4,798	4,582	-216	-4.5
	Apr-Jun	4,820	4,742	4,792	50	1.1
	Jul-Sep	5,678	5,363	5,484	121	2.3
	Oct-Dec	4,694	4,612	4,772	160	3.5
Vehicles	Total	1,116,276	1,092,241	1,186,411	94,170	8.6
	Jan-Mar	233,935	223,866	236,051	12,185	5.4
	Apr-Jun	285,641	274,123	293,446	19,323	7.0
	Jul-Sep	349,607	345,098	369,042	23,944	6.9
	Oct-Dec	247,093	249,154	287,872	38,718	15.5
Passengers	Total	4,124,931	4,092,529	4,395,105	302,576	7.4
	Jan-Mar	797,089	774,147	814,754	40,607	5.2
	Apr-Jun	1,096,850	1,079,367	1,150,990	71,623	6.6
	Jul-Sep	1,344,153	1,337,755	1,407,746	69,991	5.2
	Oct-Dec	886,839	901,260	1,021,615	120,355	13.4

Chart 2. Average number of passengers per vehicle crossing between Malta and Gozo

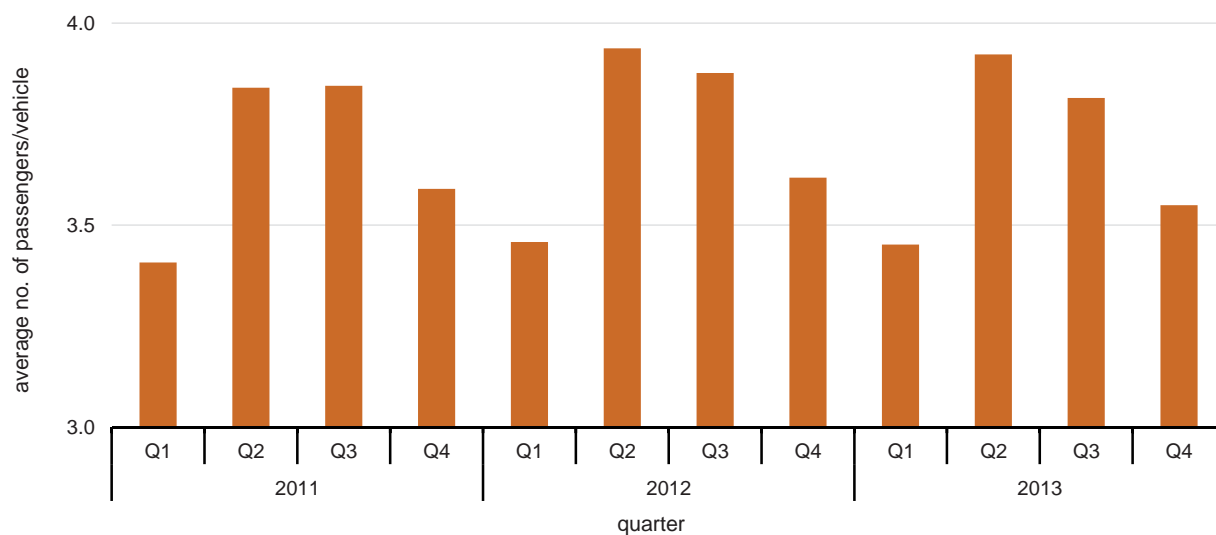


Table 2. Monthly sea transport between Malta and Gozo: 2012-2013

		Year		absolute change	percentage change
		2012	2013	2013/2012	2013/2012
Trips	Total	19,515	19,630	115	0.6
	January	1,661	1,532	-129	-7.8
	February	1,567	1,454	-113	-7.2
	March	1,570	1,596	26	1.7
	April	1,550	1,532	-18	-1.2
	May	1,582	1,600	18	1.1
	June	1,610	1,660	50	3.1
	July	1,803	1,846	43	2.4
	August	1,824	1,872	48	2.6
	September	1,736	1,766	30	1.7
	October	1,569	1,590	21	1.3
	November	1,525	1,598	73	4.8
	December	1,518	1,584	66	4.3
Vehicles	Total	1,092,241	1,186,411	94,170	8.6
	January	69,580	71,310	1,730	2.5
	February	73,161	78,561	5,400	7.4
	March	81,125	86,180	5,055	6.2
	April	90,299	92,780	2,481	2.7
	May	89,830	97,196	7,366	8.2
	June	93,994	103,470	9,476	10.1
	July	112,295	120,555	8,260	7.4
	August	123,511	130,623	7,112	5.8
	September	109,292	117,864	8,572	7.8
	October	90,342	100,959	10,617	11.8
	November	82,503	94,517	12,014	14.6
	December	76,309	92,396	16,087	21.1
Passengers	Total	4,092,529	4,395,105	302,576	7.4
	January	228,357	235,571	7,214	3.2
	February	245,123	259,152	14,029	5.7
	March	300,667	320,031	19,364	6.4
	April	350,786	363,629	12,843	3.7
	May	361,441	390,095	28,654	7.9
	June	367,140	397,266	30,126	8.2
	July	426,099	456,588	30,489	7.2
	August	479,951	500,226	20,275	4.2
	September	431,705	450,932	19,227	4.5
	October	356,859	389,513	32,654	9.2
	November	292,014	321,182	29,168	10.0
	December	252,387	310,920	58,533	23.2

Table 3. Monthly sea transport between Malta and Gozo: 2012-2013

		Ċirkewwa - Mġarr				Mġarr - Ċirkewwa			
				absolute change	percentage change			absolute change	percentage change
		2012	2013	2013/2012	2013/2012	2012	2013	2013/2012	2013/2012
Trips	Total	9,757	9,815	58	0.6	9,758	9,815	57	0.6
	January	830	766	-64	-7.7	831	766	-65	-7.8
	February	783	727	-56	-7.2	784	727	-57	-7.3
	March	785	798	13	1.7	785	798	13	1.7
	April	775	766	-9	-1.2	775	766	-9	-1.2
	May	791	800	9	1.1	791	800	9	1.1
	June	805	830	25	3.1	805	830	25	3.1
	July	902	923	21	2.3	901	923	22	2.4
	August	912	936	24	2.6	912	936	24	2.6
	September	868	883	15	1.7	868	883	15	1.7
	October	784	795	11	1.4	785	795	10	1.3
	November	763	799	36	4.7	762	799	37	4.9
	December	759	792	33	4.3	759	792	33	4.3
Vehicles	Total	548,356	601,044	52,688	9.6	543,885	585,367	41,482	7.6
	January	34,118	35,040	922	2.7	35,462	36,270	808	2.3
	February	36,491	39,353	2,862	7.8	36,670	39,208	2,538	6.9
	March	41,559	44,065	2,506	6.0	39,566	42,115	2,549	6.4
	April	45,068	46,720	1,652	3.7	45,231	46,060	829	1.8
	May	44,880	49,545	4,665	10.4	44,950	47,651	2,701	6.0
	June	48,315	52,557	4,242	8.8	45,679	50,913	5,234	11.5
	July	55,783	61,059	5,276	9.5	56,512	59,496	2,984	5.3
	August	62,948	67,703	4,755	7.6	60,563	62,920	2,357	3.9
	September	53,974	58,459	4,485	8.3	55,318	59,405	4,087	7.4
	October	45,059	51,112	6,053	13.4	45,283	49,847	4,564	10.1
	November	41,466	47,872	6,406	15.4	41,037	46,645	5,608	13.7
	December	38,695	47,559	8,864	22.9	37,614	44,837	7,223	19.2

Methodological Notes

1. For the purposes of this News Release, Scheduled Sea Transport refers to the services of the Gozo Channel Co. Ltd.
2. The data in this release are compiled from administrative information provided by the Gozo Channel Co. Ltd.
3. The data are not normally subject to revision.
4. The table below illustrates the passenger and vehicle capacity by each Gozo Channel vessel:

Carrying capacity

Vessel	Vehicles	Passengers
Gaudos	72	900
Malita	138	900
Ta' Pinu	138*	900

Note: MV Ta' Pinu was out of service for upgrading purposes twice between the 22/2/2012-29/3/2012 and 11/4/2012-14/6/2012.