

Total arrivals in collective accommodation establishments during January advanced by 11.3 per cent, whereas total nights spent declined by 1.0 per cent when compared to the corresponding month last year.

Collective Accommodation Establishments: January 2014

Cut-off date:
18 March 2014

Total arrivals in collective accommodation establishments during the month under review numbered 67,153, while total nights spent amounted to 368,961. Almost all establishments recorded increases in total nights spent, while the largest share of guest nights was reported in 4-star hotels, accounting for 170,838 nights, or 46.3 per cent of the total (Table 2). Three 4-star hotels were not operating this year (Table 4).

The average length of stay in collective accommodation establishments went down from 6.2 nights in January 2013, to 5.5 nights during the month under review. The net use of bed-places stood at 34.2 per cent, at par with last year. Furthermore, almost all collective accommodation categories registered increases in occupancy levels.

Regional breakdown

Total arrivals in Malta numbered 64,062, up by 10.4 per cent over January 2013. Additionally, a decline of 1.7 per cent was recorded in the number of nights spent. Meanwhile, the average length of stay edged down by 0.7 to 5.6 nights, when compared to last year. The net occupancy rate declined from 34.9 per cent to 34.6 per cent.

Total arrivals and nights spent in Gozo and Comino increased by 34.6 and 41.6 when compared to the comparative month last year, to 3,091 and 9,134 respectively.

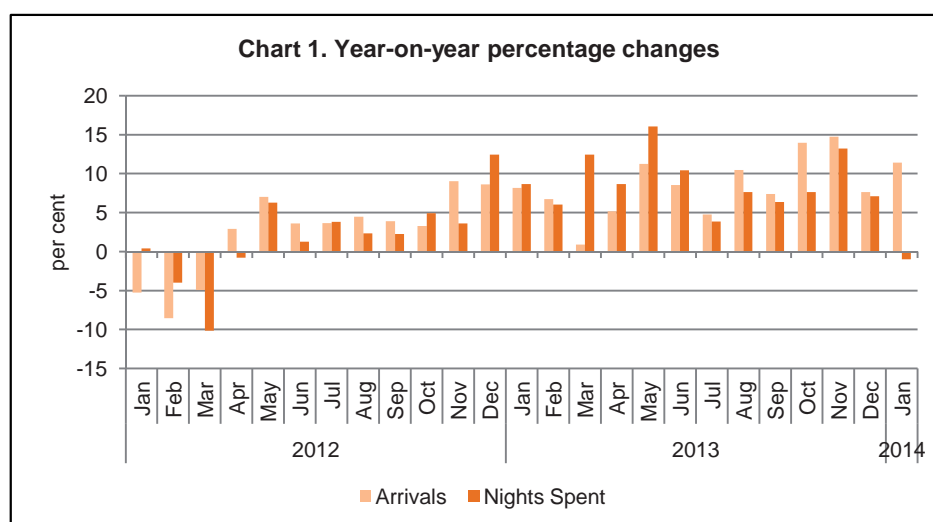
Capacity

On a national level, there were 137 active collective accommodation establishments during January, with a net capacity of 16,004 bedrooms and 34,873 bed-places (Table 4). On average each establishment had 2.2 beds per room ■

Compiled by:
**Unit C3: Population and
Tourism Statistics**
**Directorate C: Social
Statistics**

Further information on data:

Mr Matthew ZERAFA
T. +356 2599 7630
E. matthew.zerafa@gov.mt



Kindly indicate source when quoting from this release.
The advance release calendar may be consulted at www.nso.gov.mt

Issued by: **External Cooperation and Communication Unit, National Statistics Office, Lascaris, Valletta VLT 2000, Malta.**
T. +356 2599 7219 F. +356 2599 7205 E. nso@gov.mt

Table 1. Total arrivals by type of accommodation

Arrivals	December*		January	
	2013		2013	2014
	MALTA			
Total	84,307	60,311	67,153	
Hotel	82,595	59,049	64,876	
5 Star	26,266	16,569	19,374	
4 Star	34,831	27,484	28,310	
3 Star	19,548	13,620	15,701	
2 Star	1,950	1,376	1,491	
Other Collective Accommodation ¹	1,712	1,262	2,277	
		Malta		
Total	79,882	58,014	64,062	
Hotel	78,226	56,768	61,808	
Of which:				
5 Star	24,567	15,882	18,474	
4 Star	33,256	26,460	26,889	
3 Star	18,770	13,195	15,151	
Other Collective Accommodation ¹	1,656	1,246	2,254	
		Gozo and Comino		
Total	4,425	2,297	3,091	
Hotel	4,369	2,281	3,068	
Of which:				
5 Star	1,699	687	900	
4 Star	1,575	1,024	1,421	
3 Star	778	425	550	
Other Collective Accommodation ¹	56	16	23	

* Revised

¹ Comprises guesthouses, hostels and tourist village

Table 2. Total nights by type of accommodation

Nights	December*		January	
	2013		2013	2014
	MALTA			
Total	399,473	372,682	368,961	
Hotel	378,350	351,056	345,551	
5 Star	86,255	64,295	71,852	
4 Star	175,627	189,085	170,838	
3 Star	103,340	86,557	90,953	
2 Star	13,128	11,118	11,909	
Other Collective Accommodation ¹	21,123	21,626	23,410	
		Malta		
Total	387,518	366,230	359,827	
Hotel	366,533	344,641	336,462	
Of which:				
5 Star	81,094	62,372	68,691	
4 Star	171,070	185,876	166,385	
3 Star	101,891	85,669	89,830	
Other Collective Accommodation ¹	20,985	21,589	23,365	
		Gozo and Comino		
Total	11,955	6,452	9,134	
Hotel	11,817	6,415	9,089	
Of which:				
5 Star	5,161	1,923	3,161	
4 Star	4,557	3,209	4,453	
3 Star	1,449	888	1,123	
Other Collective Accommodation ¹	138	37	45	

* Revised

¹ Comprises guesthouses, hostels and tourist village

Table 3. Net use of bed-places by type of accommodation

Occupancy (%)	December*		January	
	2013		2013	2014
	MALTA			
Total	36.3		34.2	34.2
Hotel	37.4		34.9	34.8
5 Star	40.3		30.7	34.5
4 Star	41.2		39.3	40.8
3 Star	31.6		31.2	27.8
2 Star	30.9		29.0	29.6
Other Collective Accommodation ¹	23.1		26.1	27.4
			Malta	
Total	36.7		34.9	34.6
Hotel	37.9		35.6	35.2
Of which:				
5 Star	40.4		31.0	34.2
4 Star	42.2		40.4	41.9
3 Star	31.5		31.4	27.9
Other Collective Accommodation ¹	23.5		26.7	27.9
			Gozo and Comino	
Total	26.7		16.4	23.1
Hotel	27.7		17.2	24.0
Of which:				
5 Star	38.8		21.7	41.8
4 Star	21.4		15.8	20.9
3 Star	34.4		21.1	21.5
Other Collective Accommodation ¹	6.3		1.8	2.8

* Revised

¹ Comprises guesthouses, hostels and tourist village

Table 4. Net number of bedrooms and bed-places

	January							
	2013		2014		2013		2014	
	Establishments		Bedrooms		Bed-places			
	MALTA							
Total	139	137	16,204	16,004	35,444	34,873		
Hotel	109	108	15,131	14,900	32,770	32,108		
5 Star	15	14	3,471	3,384	6,909	6,719		
4 Star	41	38	7,100	6,221	15,674	13,509		
3 Star	40	44	3,992	4,696	8,947	10,582		
2 Star	13	12	568	599	1,240	1,298		
Other Collective Accommodation ¹	30	29	1,073	1,104	2,674	2,765		
			Malta					
Total	127	126	15,543	15,398	34,033	33,579		
Hotel	100	99	14,504	14,321	31,427	30,873		
Of which:								
5 Star	13	13	3,265	3,262	6,480	6,475		
4 Star	37	34	6,795	5,899	15,018	12,822		
3 Star	38	41	3,924	4,609	8,811	10,400		
Other Collective Accommodation ¹	27	27	1,039	1,077	2,606	2,706		
			Gozo and Comino					
Total	12	11	661	606	1,411	1,294		
Hotel	9	9	627	579	1,343	1,235		
Of which:								
5 Star	2	1	206	122	429	244		
4 Star	4	4	305	322	656	687		
3 Star	2	3	68	87	136	182		
Other Collective Accommodation ¹	3	2	34	27	68	59		

¹ Comprises guesthouses, hostels and tourist village

Methodological Notes

Survey on collective accommodation establishments

1. The objective of the survey is to estimate the utilisation rate of bed-places of all collective accommodation establishments in Malta and Gozo. The variables collected from the survey are the following:

- Number of residents
- Number of non-residents
- Nights spent by residents
- Nights spent by non-residents
- Number of room nights sold to foreign residents
- Number of room nights sold to Maltese residents
- Number of bedrooms
- Number of bed-places
- Number of days the establishment was closed during the month

The collection of the above variables and the calculation of occupancy levels satisfy Regulation (EU) No 692/2011.

2. The survey is distributed monthly to all collective accommodation establishments namely hotels, guesthouses, hostels and tourist village.
3. In this release the figures for December 2013 should be considered as a second estimate while those relating to January 2014 are a first estimate - thus subject to revisions in the following release.
4. The NSO is currently carrying out quarterly improvements on past data in view of new Regulation Requirements. As a result, past data may be subject to minor modifications.
5. The Malta Tourism Authority (MTA) licensing department reclassified all collective accommodation establishments registered as apart-hotels to hotels (refer to Legal Notice 351, 2012). These changes are being taken on board for 2013 and 2014 data as from this release.

6. Definitions:

- A *bedroom* is the unit formed by one room or groups of rooms constituting an indivisible rental whole in an accommodation establishment or dwelling.
- A *bed-place* in an establishment is determined by the number of persons who can stay overnight in the bed set-up in the establishment, not taking into account any extra beds that may be provided to clients on request.
- *Residents* are Maltese/Gozitan residents who check in (out) of a collective accommodation establishment. A person is considered to be a Maltese/Gozitan resident if:
 - (a) S/he has lived for most of the past 12 months in Malta/Gozo;
 - (b) S/he has lived in Malta/Gozo for less than 12 months but intends to return within the year to settle into a life here.
- *Non-residents* are foreigners who do not necessarily follow the definition of a tourist and check in (out) of a collective accommodation establishment.
- *Total arrivals* are the number of residents and non-residents altogether.
- *Total nights spent* refers to each night a guest actually spends or is registered to spend in a collective accommodation establishment.
- *Net use of bed-places* is the net occupancy rate calculated for all active accommodation establishments net of seasonal closures and other temporary closures for renovation, police order, etc. The net use of bed places is the percentage of the total nights

7. Response Rate

December 2013	94.7%
January 2014	93.3%