

16 July 2014 | 1100 hrs | 134/2014

In June, the annual rate of inflation as measured by the Harmonised Index of Consumer Prices stood at 0.7 per cent.

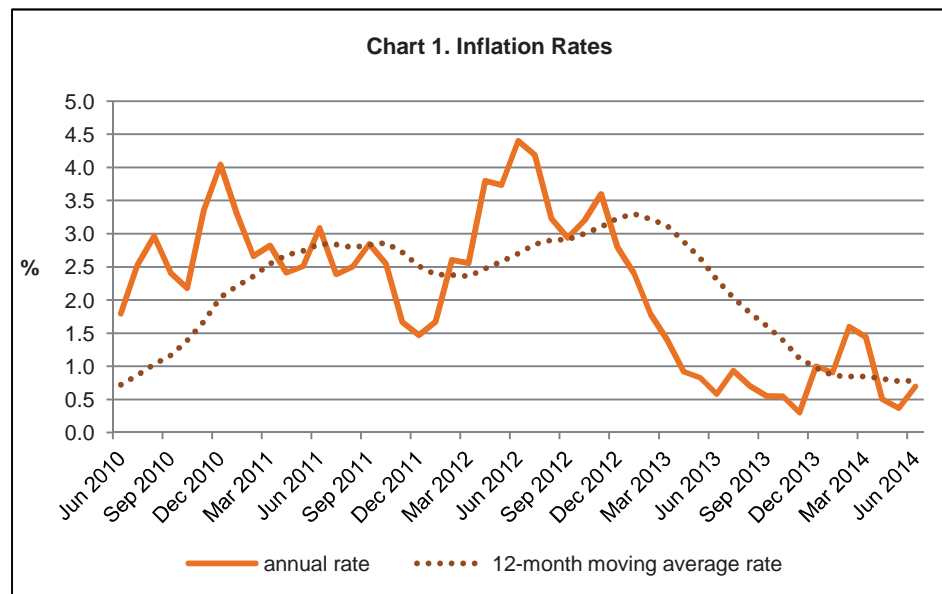
## Harmonised Index of Consumer Prices (HICP): June 2014

In the month under review, the annual rate of inflation stood at 0.7 per cent, as shown in Chart 1. A year earlier the annual rate was 0.6 per cent.

The largest upward impacts on annual inflation were brought about by the Restaurants and Hotels Index (0.6 percentage points), the Furniture, Household Equipment and Routine Maintenance of the House Index (0.3 percentage points) and the Alcoholic Beverages and Tobacco Index (0.2 percentage points). This was mainly due to costlier restaurant services, furniture items and cigarettes respectively (Table 5).

The main downward impacts were recorded in the Housing, Water, Electricity, Gas and Other Fuels Index (-0.7 percentage points), the Communication Index (-0.1 percentage points) and the Food and Non-alcoholic Beverages Index (-0.1 percentage points). These were mainly due to lower electricity rates, prices of mobile phones and the price of vegetables, as shown in Table 5.

The twelve-month moving average rate was 0.8 per cent ■



Compiled by:

**Unit A5: Price Statistics**

**Directorate A: Economic Statistics**

Further information on data:

**Mr Keith BORG**

T. +356 2599 7312

E. keith.borg@gov.mt

Kindly indicate source when quoting from this release.

The advance release calendar may be consulted at [www.nso.gov.mt](http://www.nso.gov.mt)

Issued by: **External Cooperation and Communication Unit, National Statistics Office, Lascaris, Valletta VLT 2000, Malta.**  
T. +356 2599 7219 F. +356 2599 7205 E. [nso@gov.mt](mailto:nso@gov.mt)

**Table 1. Harmonised Index of Consumer Prices by Division**  
*Average 2005=100*

Division	Weight	Indices			Annual Rate (%)	Monthly Rate (%)
		Jun 2013	May 2014	Jun 2014	Jun 2014	Jun 2014
Food and Non-alcoholic Beverages	<b>170.06</b>	142.42	143.78	141.97	-0.3	-1.3
Alcoholic Beverages and Tobacco	<b>34.26</b>	127.40	136.09	136.13	6.9	0.0
Clothing and Footwear	<b>61.44</b>	102.91	101.42	103.81	0.9	2.4
Housing, Water, Electricity, Gas and Other Fuels	<b>84.27</b>	147.19	135.23	135.25	-8.1	0.0
Furniture, Household Equipment and Routine Maintenance of the House	<b>78.14</b>	111.17	114.01	115.63	4.0	1.4
Health	<b>40.78</b>	121.74	122.77	122.60	0.7	-0.1
Transport	<b>142.19</b>	117.03	115.56	116.76	-0.2	1.0
Communication	<b>38.40</b>	74.06	73.15	73.03	-1.4	-0.2
Recreation and Culture	<b>101.64</b>	101.95	103.28	103.37	1.4	0.1
Education	<b>15.42</b>	147.97	156.86	156.86	6.0	0.0
Restaurants and Hotels	<b>160.73</b>	139.29	135.91	142.76	2.5	5.0
Miscellaneous Goods and Services	<b>72.67</b>	119.73	120.84	120.96	1.0	0.1
<b>All Items</b>	<b>1,000.00</b>	<b>122.95</b>	<b>122.38</b>	<b>123.81</b>	<b>0.7</b>	<b>1.2</b>

**Table 2. Harmonised Index of Consumer Prices by Division**  
*Rates of Change (%)*

Division	Weight	Annual Rate			Monthly Rate		
		Jun 2013	May 2014	Jun 2014	Jun 2013	May 2014	Jun 2014
Food and Non-alcoholic Beverages	<b>170.06</b>	5.8	0.7	-0.3	-0.2	0.3	-1.3
Alcoholic Beverages and Tobacco	<b>34.26</b>	6.9	7.1	6.9	0.3	0.0	0.0
Clothing and Footwear	<b>61.44</b>	0.0	-0.5	0.9	0.9	2.9	2.4
Housing, Water, Electricity, Gas and Other Fuels	<b>84.27</b>	0.5	-8.3	-8.1	-0.2	-0.3	0.0
Furniture, Household Equipment and Routine Maintenance of the House	<b>78.14</b>	0.8	2.9	4.0	0.4	0.1	1.4
Health	<b>40.78</b>	1.4	0.9	0.7	0.1	-0.3	-0.1
Transport	<b>142.19</b>	-1.6	-1.9	-0.2	-0.7	-1.0	1.0
Communication	<b>38.40</b>	-9.7	-1.6	-1.4	-0.3	0.2	-0.2
Recreation and Culture	<b>101.64</b>	2.5	1.7	1.4	0.4	0.4	0.1
Education	<b>15.42</b>	4.2	6.0	6.0	0.0	0.0	0.0
Restaurants and Hotels	<b>160.73</b>	-2.6	2.1	2.5	4.6	4.7	5.0
Miscellaneous Goods and Services	<b>72.67</b>	1.5	0.8	1.0	-0.1	0.2	0.1
<b>All Items</b>	<b>1,000.00</b>	<b>0.6</b>	<b>0.4</b>	<b>0.7</b>	<b>0.8</b>	<b>1.0</b>	<b>1.2</b>

**Table 3. All Items HICP**  
*Average 2005=100*

<b>Month</b>	<b>2011</b>	<b>2012</b>	<b>2013</b>	<b>2014</b>
January	111.31	113.17	115.89	116.94
February	111.01	113.90	115.93	117.78
March	112.69	115.57	117.22	118.91
April	115.11	119.48	120.58	121.19
May	116.57	120.92	121.93	122.38
June	117.14	122.24	122.95	123.81
July	117.02	121.92	123.06	
August	118.30	122.12	122.92	
September	117.83	121.29	121.96	
October	116.79	120.49	121.15	
November	114.08	118.23	118.53	
December	114.42	117.57	118.75	

**Table 4. Inflation Rates (%)**

	<b>Month</b>	<b>Annual Rate</b>	<b>12-month Moving Average Rate</b>
2011	January	3.3	2.2
	February	2.7	2.4
	March	2.8	2.5
	April	2.4	2.7
	May	2.5	2.7
	June	3.1	2.8
	July	2.4	2.8
	August	2.5	2.8
	September	2.8	2.8
	October	2.5	2.9
	November	1.7	2.7
	December	1.5	2.5
2012	January	1.7	2.4
	February	2.6	2.4
	March	2.6	2.4
	April	3.8	2.5
	May	3.7	2.6
	June	4.4	2.7
	July	4.2	2.8
	August	3.2	2.9
	September	2.9	2.9
	October	3.2	3.0
	November	3.6	3.1
	December	2.8	3.2
2013	January	2.4	3.3
	February	1.8	3.2
	March	1.4	3.1
	April	0.9	2.9
	May	0.8	2.6
	June	0.6	2.3
	July	0.9	2.0
	August	0.7	1.8
	September	0.6	1.6
	October	0.5	1.4
	November	0.3	1.1
	December	1.0	1.0
2014	January	0.9	0.9
	February	1.6	0.8
	March	1.4	0.8
	April	0.5	0.8
	May	0.4	0.8
	June	0.7	0.8
	July		
	August		
	September		
	October		
	November		
	December		

Table 5. Impact on Annual Inflation \*

Index	Weight	Annual Rate June 2014	Impact (percentage points) June 2014
Food and Non-alcoholic Beverages	<b>170.06</b>	-0.3	-0.1
Alcoholic Beverages and Tobacco	<b>34.26</b>	6.9	0.2
Clothing and Footwear	<b>61.44</b>	0.9	0.0
Housing, Water, Electricity, Gas and Other Fuels	<b>84.27</b>	-8.1	-0.7
Furniture, Household Equipment and Routine Maintenance of the House	<b>78.14</b>	4.0	0.3
Health	<b>40.78</b>	0.7	0.0
Transport	<b>142.19</b>	-0.2	0.0
Communication	<b>38.40</b>	-1.4	-0.1
Recreation and Culture	<b>101.64</b>	1.4	0.1
Education	<b>15.42</b>	6.0	0.1
Restaurants and Hotels	<b>160.73</b>	2.5	0.6
Miscellaneous Goods and Services	<b>72.67</b>	1.0	0.1

\* See methodological note 11

## Methodological Notes

1. The Harmonised Index of Consumer Prices (HICP) is calculated according to rules specified in a series of European Union Regulations that were developed by the EU statistical office - Eurostat - in conjunction with the EU Member States.
2. The HICP is used to compare inflation rates across the European Union. Since January 1999 the European Central Bank (ECB) has also used it as the measure of price stability across the euro area. Indeed, the HICP was developed in the EU for the purpose of assessing whether prospective members of the European Monetary Union would meet the inflation convergence criterion, and later acting as the measure of inflation used by the ECB to assess price stability in the euro area. The main requirement was for a measure that could be used to make reliable comparisons of inflation rates across EU Member States. Such comparisons are not possible using national consumer price indices due to differences in index coverage and construction.
3. While the methodology of the Retail Price Index (RPI) and the HICP is similar, it differs in the following ways:
  - (a) The population base of each index is different. The RPI is representative of private households only. The HICP covers private households, institutional households and foreign visitors to Malta;
  - (b) The RPI is a fixed weight and fixed base index while the HICP is a chain index whose weights are reviewed on an annual basis, every January. Additionally, newly significant goods and services are introduced into the HICP on an annual basis;
  - (c) The coverage of the HICP is based on an international classifications system, COICOP (Classification of Individual Consumption by Purpose). The way in which this broadly maps to the RPI groupings is shown in the following table:

	COICOP Division	RPI Group
01	Food and Non-alcoholic Beverages	Food (including take-away food and food consumed in restaurants)
02	Alcoholic Beverages and Tobacco	Beverages and Tobacco
03	Clothing and Footwear	Clothing and footwear
04	Housing, Water, Electricity, Gas and Other Fuels	Housing Water, Electricity, Gas and Fuels
05	Furniture, Household Equipment and Routine Maintenance of the House	Household Equipment and House Maintenance costs
06	Health	Personal Care and Health
07	Transport	Transport and Communication
08	Communication	
09	Recreation and Culture	Recreation and Culture (including education)
10	Education	
11	Restaurants and Hotels	Restaurants (included under food)
12	Miscellaneous Goods and Services	Other Goods and Services

This comparison is broad and indicative only. Therefore, users are advised to consult the NSO before comparing the results of these indices at such levels.

4. Apart from the disparities identified in point 3 above, both the RPI and the HICP have the same geographic coverage in that both indices refer to the whole country. In addition to this, both indices utilise the same price collection methodologies in respect of, by and large, the same basket of goods and services. Prices are collected from the same outlets.
5. The RPI and the HICP use different weighting schemes. The RPI weights refer to expenditure by private households and are largely based on data derived from the Household Budgetary Survey (HBS). The HICP weights cover private household expenditure, institutional household expenditure as well as tourism expenditure in Malta. The differences in the underlying weighting schemes between the RPI and the HICP account significantly for the disparities in their results on a monthly basis.

6. The types of goods and services that in principle should be included in the index are known as the scope of the price index. The HICP largely follows National Accounts concepts of what constitutes household consumption in determining the index scope, and mainly uses National Accounts data sources to weight the items in the basket. This makes for increased coherence between the HICP commodity and population coverage and National Accounts principles. As a result, HICP weights are therefore based on the final consumption expenditure of all individuals in the domestic territory, including spending by private households, institutional households and foreign visitors. National Accounts principles have also influenced the classification of goods and services within this index.
7. The HICP is being published with 2005 as its base year. However, as already indicated, the HICP is a chain index that is subject to review on an annual basis. It should be noted that the re-basing operation was conducted after rounding all past indices to one decimal place as prescribed by Eurostat. This means that there might be slight differences when comparing this series with the past due to rounding.
8. The HICP is published by the NSO and Eurostat on a monthly basis. However, Eurostat also publishes aggregate HICP indices for the euro area countries and the European Union. In aggregating the individual country indices, Eurostat uses weights that are based on each country's share of each relative bloc's total household final consumption expenditure.
9. The HICP weighting scheme is annually updated in accordance with Commission Regulation (EU) No. 1114/2010.
10. The treatment of seasonal items is in accordance with Commission Regulation (EC) No. 330/2009.
11. An impact is a measure showing the change in inflation due to the inclusion of an index. The impact takes account of both the weight and the annual rate of inflation by division. Figures may not add up due to rounding.