

Total arrivals and nights spent in collective accommodation establishments during June advanced by 5.4 and 0.3 per cent respectively when compared to the corresponding month last year.

Collective Accommodation Establishments: June 2014

Cut-off date:
22 August 2014

Total arrivals in collective accommodation establishments during the month under review numbered 157,409, while total nights spent amounted to 884,686. The largest share of guest nights was reported in 4-star hotels, accounting for 414,939 nights, or 46.9 per cent of the total (Table 2).

The average length of stay in collective accommodation establishments went down from 5.9 nights in June 2013, to 5.6 nights during the month under review. The net use of bed-places stood at 72.1 per cent, up by 0.1 percentage points when compared to June 2013 (Table 3).

On a national level, there were 166 active accommodation establishments during June, with a net capacity of 18,564 bedrooms and 40,936 bed-places. On average each establishment had 2.2 beds per room (Table 4).

April-June 2014

Total arrivals and nights spent during the second quarter rose by 8.9 and 3.7 per cent over the corresponding period last year, to 457,189 and 2.5 million respectively (Tables 5 and 8). Nights spent by non-residents advanced by 3.6 per cent, whereas resident nights went up by 8.2 per cent (Tables 9 and 10). The occupancy rate for the quarter under review was estimated at 67.6 per cent, 3.0 percentage points more than last year (Table 11).

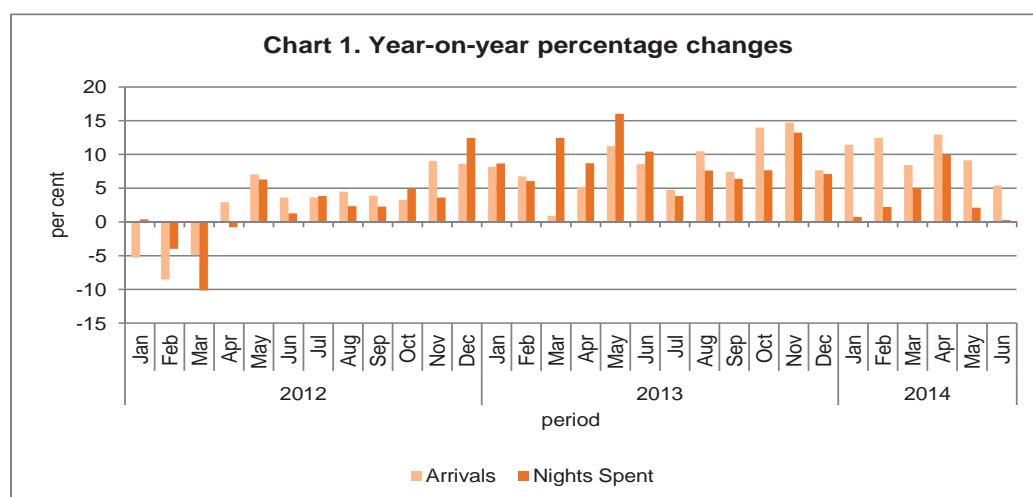
January-June 2014

Total arrivals during the first six months amounted to 719,697, an increase of 9.5 per cent over 2013 (Table 1). Total nights spent went up by 3.4 per cent, reaching 3.8 million (Table 2). The net use of bed-places went up by 2.6 percentage points to 56.1 per cent. ■

Compiled by:
**Unit C3: Population and
Tourism Statistics**
**Directorate C: Social
Statistics**

Further information on data:

Mr Matthew ZERAFA
T. +356 2599 7630
E. matthew.zerafa@gov.mt



Kindly indicate source when quoting from this release.
The advance release calendar may be consulted at www.nso.gov.mt

Issued by: **External Cooperation and Communication Unit, National Statistics Office, Lascaris, Valletta VLT 2000, Malta.**
T. +356 2599 7219 F. +356 2599 7205 E. nso@gov.mt

Table 1. Total arrivals by type of accommodation

Arrivals	May*	June		January-June	
	2014	2013	2014	2013	2014
	MALTA				
Total	156,143	149,372	157,409	657,248	719,697
Hotel	149,798	144,427	150,897	638,707	693,277
5 Star	39,251	36,892	39,438	171,141	186,885
4 Star	65,122	63,487	66,010	296,772	308,296
3 Star	41,143	40,110	41,005	154,932	179,594
2 Star	4,283	3,938	4,444	15,862	18,503
Other Collective Accommodation ¹	6,345	4,945	6,512	18,541	26,419
	Malta				
Total	147,474	140,939	148,745	621,147	681,228
Hotel	141,360	136,302	142,622	603,681	655,882
Of which:					
5 Star	37,461	34,825	37,052	161,441	176,673
4 Star	60,267	59,035	61,679	279,308	289,360
3 Star	39,989	38,998	39,945	149,706	174,103
Other Collective Accommodation ¹	6,114	4,637	6,123	17,465	25,346
	Gozo and Comino				
Total	8,669	8,433	8,664	36,101	38,469
Hotel	8,438	8,125	8,275	35,026	37,395
Of which:					
5 Star	1,790	2,067	2,386	9,700	10,212
4 Star	4,855	4,452	4,331	17,464	18,936
3 Star	1,154	1,112	1,060	5,226	5,491
Other Collective Accommodation ¹	231	309	389	1,075	1,074

Table 2. Total nights by type of accommodation

Nights	May*	June		January-June	
	2014	2013	2014	2013	2014
	MALTA				
Total	819,039	882,081	884,686	3,703,016	3,829,892
Hotel	777,922	838,730	840,032	3,513,851	3,633,592
5 Star	162,218	163,210	170,325	686,579	738,911
4 Star	376,042	417,222	414,939	1,829,941	1,798,147
3 Star	216,587	234,206	229,795	897,708	985,696
2 Star	23,075	24,093	24,973	99,623	110,838
Other Collective Accommodation ¹	41,116	43,350	44,655	189,165	196,301
	Malta				
Total	791,126	847,060	848,814	3,583,700	3,705,848
Hotel	750,791	804,769	805,588	3,397,738	3,512,986
Of which:					
5 Star	155,527	154,891	161,426	653,734	704,615
4 Star	359,506	396,629	393,832	1,766,750	1,730,864
3 Star	214,231	230,714	227,049	884,040	973,490
Other Collective Accommodation ¹	40,334	42,291	43,227	185,963	192,863
	Gozo and Comino				
Total	27,913	35,021	35,872	119,315	124,044
Hotel	27,131	33,962	34,444	116,113	120,606
Of which:					
5 Star	6,691	8,319	8,899	32,845	34,296
4 Star	16,536	20,593	21,107	63,191	67,283
3 Star	2,356	3,492	2,746	13,668	12,206
Other Collective Accommodation ¹	782	1,059	1,428	3,202	3,438

* Revised

¹ Comprises guesthouses, hostels and tourist village

Table 3. Net use of bed-places by type of accommodation

Occupancy (%)	May*	June		January-June	
	2014	2013	2014	2013	2014
	MALTA				
Total	66.8	72.0	72.1	53.5	56.1
Hotel	68.7	73.9	74.0	54.9	57.7
5 Star	75.8	78.8	82.2	55.2	59.4
4 Star	72.6	79.4	79.1	59.8	64.5
3 Star	60.9	66.1	64.7	48.3	49.1
2 Star	50.7	50.7	51.6	41.1	43.9
Other Collective Accommodation ¹	43.9	48.1	48.6	37.1	36.9
	Malta				
Total	67.6	72.3	72.4	54.0	56.7
Hotel	69.5	74.2	74.3	55.3	58.3
Of which:					
5 Star	77.5	79.7	83.1	55.7	60.1
4 Star	73.7	79.7	79.4	60.4	65.4
3 Star	61.2	66.1	65.0	48.3	49.3
Other Collective Accommodation ¹	45.1	49.0	49.2	37.9	37.7
	Gozo and Comino				
Total	49.0	65.0	65.1	43.2	43.2
Hotel	51.4	67.8	67.5	45.2	45.0
Of which:					
5 Star	50.3	64.6	69.1	45.7	47.7
4 Star	55.2	73.3	72.8	46.7	47.6
3 Star	41.3	63.9	49.7	49.8	37.5
Other Collective Accommodation ¹	18.8	27.6	35.5	16.5	17.4

* Revised

¹ Comprises guesthouses, hostels and tourist village

Table 4. Net number of bedrooms and bed-places

	June					
	2013		2014		2014	
	Establishments		Bedrooms		Bed-places	
	MALTA					
Total	164	166	18,503	18,564	41,010	40,936
Hotel	126	125	17,278	17,310	38,006	37,856
5 Star	15	15	3,470	3,468	6,907	6,905
4 Star	46	45	8,100	7,983	17,696	17,496
3 Star	48	49	4,986	5,172	11,808	11,834
2 Star	17	16	722	687	1,595	1,621
Other Collective Accommodation ¹	38	41	1,225	1,254	3,004	3,080
	Malta					
Total	148	150	17,653	17,699	39,213	39,100
Hotel	115	114	16,491	16,506	36,337	36,154
Of which:						
5 Star	13	13	3,264	3,262	6,478	6,476
4 Star	41	40	7,654	7,520	16,760	16,529
3 Star	45	46	4,899	5,085	11,626	11,650
Other Collective Accommodation ¹	33	36	1,162	1,193	2,876	2,946
	Gozo and Comino					
Total	16	16	850	865	1,797	1,836
Hotel	11	11	787	804	1,669	1,702
Of which:						
5 Star	2	2	206	206	429	429
4 Star	5	5	446	463	936	967
3 Star	3	3	87	87	182	184
Other Collective Accommodation ¹	5	5	63	61	128	134

¹ Comprises guesthouses, hostels and tourist village

Table 5. Total arrivals by type of accommodation

Arrivals	Q1/2014*	April-June	
		2013	2014
MALTA			
Total	262,508	419,679	457,189
Hotel	254,624	406,782	438,654
5 Star	72,281	105,876	114,604
4 Star	115,699	183,618	192,596
3 Star	60,537	106,107	119,057
2 Star	6,107	11,181	12,397
Other Collective Accommodation ¹	7,884	12,896	18,535
Malta			
Total	247,869	396,793	433,359
Hotel	240,183	384,756	415,700
Of which:			
5 Star	67,986	100,200	108,687
4 Star	108,782	172,263	180,577
3 Star	58,409	102,825	115,694
Other Collective Accommodation ¹	7,687	12,037	17,659
Gozo and Comino			
Total	14,639	22,885	23,830
Hotel	14,441	22,026	22,954
Of which:			
5 Star	4,295	5,676	5,917
4 Star	6,917	11,355	12,019
3 Star	2,128	3,282	3,363
Other Collective Accommodation ¹	198	859	876

Table 6. Resident arrivals by type of accommodation

Arrivals	Q1/2014*	April-June	
		2013	2014
MALTA			
Total	43,523	31,301	32,730
Hotel	43,034	30,576	32,015
5 Star	12,198	10,003	10,250
4 Star	25,417	14,778	15,999
3 Star	4,131	4,059	3,652
2 Star	1,288	1,736	2,114
Other Collective Accommodation ¹	489	725	715
Malta			
Total	33,687	21,608	22,656
Hotel	33,259	21,087	22,160
Of which:			
5 Star	9,363	7,517	7,992
4 Star	20,781	10,165	11,330
3 Star	2,865	2,693	2,154
Other Collective Accommodation ¹	428	521	496
Gozo and Comino			
Total	9,836	9,693	10,074
Hotel	9,775	9,489	9,855
Of which:			
5 Star	2,835	2,486	2,258
4 Star	4,636	4,613	4,669
3 Star	1,266	1,366	1,498
Other Collective Accommodation ¹	61	204	219

* Revised

¹ Comprises guesthouses, hostels and tourist village

Table 7. Non-resident arrivals by type of accommodation

Arrivals	Q1/2014*	April-June	
		2013	2014
MALTA			
Total	218,985	388,377	424,459
Hotel	211,590	376,206	406,639
5 Star	60,083	95,873	104,354
4 Star	90,283	168,840	176,597
3 Star	56,406	102,048	115,405
2 Star	4,819	9,445	10,283
Other Collective Accommodation ¹	7,395	12,172	17,820
Malta			
Total	214,183	375,186	410,703
Hotel	206,924	363,669	393,540
Of which:			
5 Star	58,623	92,683	100,695
4 Star	88,002	162,098	169,247
3 Star	55,544	100,132	113,540
Other Collective Accommodation ¹	7,259	11,517	17,163
Gozo and Comino			
Total	4,803	13,192	13,756
Hotel	4,666	12,537	13,099
Of which:			
5 Star	1,460	3,190	3,659
4 Star	2,281	6,742	7,350
3 Star	862	1,916	1,865
Other Collective Accommodation ¹	137	655	657

Table 8. Total nights by type of accommodation

Nights	Q1/2014*	April-June	
		2013	2014
MALTA			
Total	1,373,483	2,368,689	2,456,410
Hotel	1,302,400	2,252,303	2,331,191
5 Star	256,784	449,838	482,127
4 Star	658,999	1,133,663	1,139,148
3 Star	345,096	604,062	640,600
2 Star	41,521	64,741	69,317
Other Collective Accommodation ¹	71,083	116,386	125,218
Malta			
Total	1,334,367	2,284,966	2,371,482
Hotel	1,263,738	2,171,256	2,249,247
Of which:			
5 Star	244,815	428,482	459,800
4 Star	638,975	1,087,820	1,091,889
3 Star	340,735	594,611	632,755
Other Collective Accommodation ¹	70,628	113,709	122,234
Gozo and Comino			
Total	39,116	83,723	84,928
Hotel	38,662	81,047	81,944
Of which:			
5 Star	11,969	21,356	22,327
4 Star	20,024	45,843	47,259
3 Star	4,361	9,450	7,845
Other Collective Accommodation ¹	454	2,676	2,984

* Revised

¹ Comprises guesthouses, hostels and tourist village

Table 9. Resident nights by type of accommodation

Nights	Q1/2014*	April-June	
		2013	2014
MALTA			
Total	88,373	67,495	73,057
Hotel	87,417	65,973	71,633
5 Star	25,704	20,702	23,970
4 Star	51,305	29,638	35,710
3 Star	8,000	12,445	7,420
2 Star	2,408	3,188	4,533
Other Collective Accommodation ¹	956	1,522	1,424
Malta			
Total	69,357	49,190	53,286
Hotel	68,502	48,130	52,277
Of which:			
5 Star	19,416	15,516	19,364
4 Star	42,932	21,466	26,917
3 Star	5,873	10,160	5,123
Other Collective Accommodation ¹	855	1,060	1,009
Gozo and Comino			
Total	19,016	18,305	19,771
Hotel	18,915	17,843	19,356
Of which:			
5 Star	6,288	5,186	4,606
4 Star	8,373	8,172	8,793
3 Star	2,127	2,285	2,297
Other Collective Accommodation ¹	101	462	415

Table 10. Non-resident nights by type of accommodation

Nights	Q1/2014*	April-June	
		2013	2014
MALTA			
Total	1,285,110	2,301,194	2,383,352
Hotel	1,214,983	2,186,331	2,259,558
5 Star	231,080	429,136	458,157
4 Star	607,694	1,104,025	1,103,437
3 Star	337,096	591,617	633,180
2 Star	39,113	61,553	64,784
Other Collective Accommodation ¹	70,127	114,864	123,794
Malta			
Total	1,265,010	2,235,776	2,318,196
Hotel	1,195,236	2,123,127	2,196,970
Of which:			
5 Star	225,399	412,966	440,436
4 Star	596,043	1,066,354	1,064,971
3 Star	334,862	584,451	627,632
Other Collective Accommodation ¹	69,773	112,649	121,225
Gozo and Comino			
Total	20,100	65,418	65,157
Hotel	19,747	63,204	62,588
Of which:			
5 Star	5,681	16,170	17,721
4 Star	11,651	37,671	38,466
3 Star	2,234	7,165	5,548
Other Collective Accommodation ¹	353	2,214	2,569

* Revised

¹ Comprises guesthouses, hostels and tourist village

Table 11. Total net use of bed-places by type of accommodation

Occupancy (%)	Q1/2014*	April-June	
		2013	2014
MALTA			
Total	43.0	64.6	67.6
Hotel	44.4	66.2	69.4
5 Star	41.7	71.6	76.7
4 Star	52.2	70.7	74.7
3 Star	36.7	58.4	60.0
2 Star	35.7	48.3	50.9
Other Collective Accommodation ¹	27.9	43.7	45.2
Malta			
Total	43.6	65.0	68.2
Hotel	44.9	66.6	70.1
<i>Of which:</i>			
5 Star	42.0	72.7	78.0
4 Star	53.2	71.3	75.5
3 Star	36.8	58.3	60.2
Other Collective Accommodation ¹	28.6	44.6	46.2
Gozo and Comino			
Total	30.3	54.6	53.6
Hotel	31.9	57.0	55.9
<i>Of which:</i>			
5 Star	36.4	54.7	57.2
4 Star	32.5	59.7	59.4
3 Star	27.6	62.2	46.9
Other Collective Accommodation ¹	5.9	23.6	24.8

* Revised

¹ Comprises guesthouses, hostels and tourist village

Methodological Notes

Survey on collective accommodation establishments

1. The objective of the survey is to estimate the utilisation rate of bed-places of all collective accommodation establishments in Malta and Gozo. The variables collected from the survey are the following:
 - Number of residents
 - Number of non-residents
 - Nights spent by residents
 - Nights spent by non-residents
 - Number of room nights sold to foreign residents
 - Number of room nights sold to Maltese residents
 - Number of bedrooms
 - Number of bed-places
 - Number of days the establishment was closed during the month

The collection of the above variables and the calculation of occupancy levels satisfy Regulation (EU) No 692/2011.

2. The survey is distributed monthly to all collective accommodation establishments namely hotels, guesthouses, hostels and tourist village.
3. In this release the figures for May 2014 should be considered as a second estimate while those relating to June 2014 are a first estimate - thus subject to revisions in the following release.
4. The Malta Tourism Authority (MTA) licensing department reclassified all collective accommodation establishments registered as aparthotels to hotels (refer to Legal Notice 351, 2012). These changes are being taken on board for 2013 and 2014 data.

5. Definitions:

- A *bedroom* is the unit formed by one room or groups of rooms constituting an indivisible rental whole in an accommodation establishment or dwelling.
- A *bed-place* in an establishment is determined by the number of persons who can stay overnight in the bed set-up in the establishment, not taking into account any extra beds that may be provided to clients on request.
- *Residents* are Maltese/Gozitan residents who check in (out) of a collective accommodation establishment. A person is considered to be a Maltese/Gozitan resident if:
 - (a) S/he has lived for most of the past 12 months in Malta/Gozo;
 - (b) S/he has lived in Malta/Gozo for less than 12 months but intends to return within the year to settle here.
- *Non-residents* are foreigners who do not necessarily follow the definition of a tourist and check in (out) of a collective accommodation establishment.
- *Total arrivals* are the number of residents and non-residents altogether.
- *Total nights spent* refers to each night a guest actually spends or is registered to spend in a collective accommodation establishment.
- *Net use of bed-places* is the net occupancy rate calculated for all active accommodation establishments net of seasonal closures and other temporary closures for renovation, police order, etc. The net use of bed places is the percentage of the total nights.
- *The average number of nights spent* is calculated using the following equation:
$$\frac{\text{total number of nights}}{\text{total number of arrivals}}$$

6. Response Rate

May 2014	95.2%
June 2014	96.4%