

20 October 2014 | 1100 hrs | 196/2014

In September, the annual rate of inflation as measured by the Retail Price Index stood at 0.14 per cent.

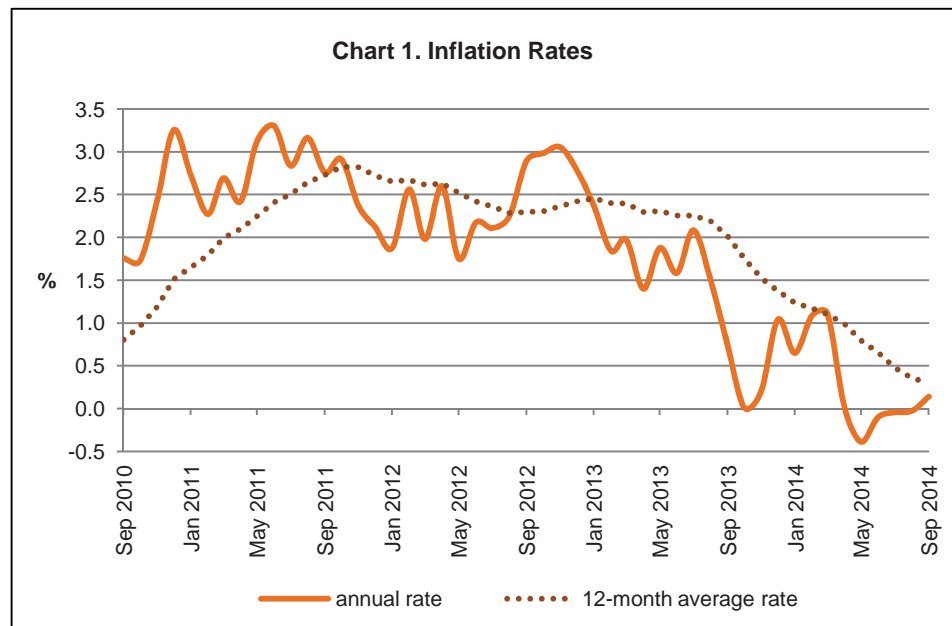
Retail Price Index: September 2014

In the month under review, the annual rate stood at 0.14 per cent, as shown in Chart 1. A year earlier the annual rate was 0.74 per cent.

The main upward impacts were recorded in the Clothing and Footwear Index (0.34 percentage points), the Recreation and Culture Index (0.25 percentage points) and the Beverages and Tobacco Index (0.22 percentage points). This was mainly due to more expensive garments, costlier tuition fees, and higher prices of cigarettes respectively (Table 5).

The largest downward impacts on annual inflation were brought about by the Water, Electricity, Gas and Fuels Index (-0.63 percentage points) and the Food Index (-0.05 percentage points). This was mainly brought about by lower electricity rates and fruit prices respectively (Table 5).

The twelve-month moving average rate was 0.30 per cent ■



Compiled by:

Unit A5: Price Statistics

**Directorate A: Economic
Statistics**

Further information on data:

Mr Keith BORG

T. +356 2599 7312

E. keith.borg@gov.mt

Table 1. RPI Group Indices
December 2009=100

| Group | Weight | Indices | | | Annual Rate | Monthly Rate |
|---|---------------|---------------|---------------|---------------|-------------|--------------|
| | | Sep 2013 | Aug 2014 | Sep 2014 | Sep 2014 | Sep 2014 |
| Food | 21.23 | 117.43 | 117.07 | 117.16 | -0.23 | 0.08 |
| Beverages and Tobacco | 6.09 | 112.66 | 116.63 | 116.67 | 3.56 | 0.03 |
| Clothing and Footwear | 7.41 | 82.06 | 79.31 | 85.78 | 4.53 | 8.16 |
| Housing | 7.61 | 108.71 | 109.36 | 109.38 | 0.62 | 0.02 |
| Water, Electricity, Gas and Fuels | 3.36 | 129.09 | 105.00 | 105.00 | -18.66 | 0.00 |
| Household Equipment and House Maintenance Costs | 6.59 | 102.11 | 103.56 | 101.53 | -0.57 | -1.96 |
| Transport and Communication | 22.76 | 106.71 | 107.11 | 107.11 | 0.37 | 0.00 |
| Personal Care and Health | 8.57 | 106.41 | 107.44 | 107.41 | 0.94 | -0.03 |
| Recreation and Culture | 9.28 | 105.54 | 108.37 | 108.37 | 2.68 | 0.00 |
| Other Goods and Services | 7.10 | 110.57 | 111.24 | 111.21 | 0.58 | -0.03 |
| All Items Retail Price Index | 100.00 | 108.26 | 108.05 | 108.41 | 0.14 | 0.33 |

**Table 2. Retail Price Index
Rates of change (%)**

| Group | Weight | Annual rate | | | Monthly rate | | |
|---|---------------|-------------|--------------|-------------|--------------|--------------|-------------|
| | | Sep 2013 | Aug 2014 | Sep 2014 | Sep 2013 | Aug 2014 | Sep 2014 |
| Food | 21.23 | 5.38 | 0.27 | -0.23 | 0.57 | 0.53 | 0.08 |
| Beverages and Tobacco | 6.09 | 4.43 | 3.64 | 3.56 | 0.12 | 0.03 | 0.03 |
| Clothing and Footwear | 7.41 | -2.82 | 1.47 | 4.53 | 4.99 | -6.32 | 8.16 |
| Housing | 7.61 | 0.31 | 0.62 | 0.62 | 0.02 | 0.04 | 0.02 |
| Water, Electricity, Gas and Fuels | 3.36 | -0.59 | -18.66 | -18.66 | 0.01 | 0.00 | 0.00 |
| Household Equipment and House Maintenance Costs | 6.59 | 0.99 | 1.85 | -0.57 | 0.42 | -0.08 | -1.96 |
| Transport and Communication | 22.76 | -3.89 | -1.31 | 0.37 | -1.68 | 0.08 | 0.00 |
| Personal Care and Health | 8.57 | 2.12 | 1.15 | 0.94 | 0.18 | 0.15 | -0.03 |
| Recreation and Culture | 9.28 | 1.83 | 3.46 | 2.68 | 0.75 | -0.17 | 0.00 |
| Other Goods and Services | 7.10 | -0.51 | 1.06 | 0.58 | 0.45 | 0.09 | -0.03 |
| All Items | 100.00 | 0.74 | -0.03 | 0.14 | 0.17 | -0.22 | 0.33 |

Table 3. All Items Retail Price Index
December 2009=100

| Month | 2010 | 2011 | 2012 | 2013 | 2014 |
|--------------|-------------|-------------|-------------|-------------|-------------|
| January | 99.49 | 102.20 | 104.11 | 106.58 | 107.27 |
| February | 99.86 | 102.13 | 104.74 | 106.67 | 107.83 |
| March | 100.43 | 103.13 | 105.17 | 107.24 | 108.43 |
| April | 101.44 | 103.89 | 106.59 | 108.08 | 108.09 |
| May | 101.61 | 104.78 | 106.61 | 108.61 | 108.19 |
| June | 101.21 | 104.55 | 106.82 | 108.51 | 108.40 |
| July | 101.07 | 103.94 | 106.13 | 108.34 | 108.29 |
| August | 100.96 | 104.15 | 106.49 | 108.08 | 108.05 |
| September | 101.65 | 104.45 | 107.47 | 108.26 | 108.41 |
| October | 102.39 | 105.37 | 108.51 | 108.52 | |
| November | 102.70 | 105.13 | 108.34 | 108.56 | |
| December | 103.25 | 105.44 | 108.38 | 109.50 | |

Table 4. Inflation Rates

| | | Annual rate (%) | 12-month moving average rate (%) |
|------|-----------|------------------------|---|
| 2011 | January | 2.72 | 1.65 |
| | February | 2.27 | 1.79 |
| | March | 2.69 | 1.99 |
| | April | 2.42 | 2.10 |
| | May | 3.12 | 2.25 |
| | June | 3.30 | 2.41 |
| | July | 2.83 | 2.50 |
| | August | 3.16 | 2.64 |
| | September | 2.76 | 2.73 |
| | October | 2.91 | 2.82 |
| | November | 2.37 | 2.82 |
| | December | 2.12 | 2.72 |
| 2012 | January | 1.87 | 2.65 |
| | February | 2.56 | 2.67 |
| | March | 1.98 | 2.61 |
| | April | 2.60 | 2.63 |
| | May | 1.75 | 2.51 |
| | June | 2.17 | 2.42 |
| | July | 2.11 | 2.36 |
| | August | 2.25 | 2.28 |
| | September | 2.89 | 2.30 |
| | October | 2.98 | 2.30 |
| | November | 3.05 | 2.36 |
| | December | 2.79 | 2.42 |
| 2013 | January | 2.37 | 2.46 |
| | February | 1.84 | 2.40 |
| | March | 1.97 | 2.40 |
| | April | 1.40 | 2.30 |
| | May | 1.88 | 2.31 |
| | June | 1.58 | 2.26 |
| | July | 2.08 | 2.25 |
| | August | 1.50 | 2.19 |
| | September | 0.74 | 2.01 |
| | October | 0.01 | 1.76 |
| | November | 0.20 | 1.52 |
| | December | 1.04 | 1.38 |
| 2014 | January | 0.65 | 1.23 |
| | February | 1.08 | 1.17 |
| | March | 1.11 | 1.10 |
| | April | 0.01 | 0.99 |
| | May | -0.39 | 0.80 |
| | June | -0.10 | 0.66 |
| | July | -0.05 | 0.48 |
| | August | -0.03 | 0.35 |
| | September | 0.14 | 0.30 |
| | October | | |
| | November | | |
| | December | | |

Table 5. Impact on annual inflation *

| Group | Weight | Annual Rate September 2014 | Impact (percentage points) September 2014 |
|---|---------------|---------------------------------------|--|
| Food | 21.23 | -0.23 | -0.05 |
| Beverages and Tobacco | 6.09 | 3.56 | 0.22 |
| Clothing and Footwear | 7.41 | 4.53 | 0.34 |
| Housing | 7.61 | 0.62 | 0.05 |
| Water, Electricity, Gas and Fuels | 3.36 | -18.66 | -0.63 |
| Household Equipment and House Maintenance Costs | 6.59 | -0.57 | -0.04 |
| Transport and Communication | 22.76 | 0.37 | 0.09 |
| Personal Care and Health | 8.57 | 0.94 | 0.08 |
| Recreation and Culture | 9.28 | 2.68 | 0.25 |
| Other Goods and Services | 7.10 | 0.58 | 0.04 |

* See methodological note 8

Methodological Notes

1. The Retail Price Index is the main measure of inflation in Malta. It measures the average change from month to month in the prices of goods and services purchased by most households in Malta.
2. The Index is compiled using a large and representative selection of more than 355 separate goods and services for which price movements are regularly monitored. Over 9,000 separate price quotations are used each month in compiling the Index.
3. The methodology of the Retail Price Index (RPI) and the Harmonised Index of Consumer Prices (HICP) is similar, but differs in the following ways:
 - (a) The population base of each index is different. The RPI is representative of private households only. The HICP covers private households, institutional households and foreign visitors to Malta;
 - (b) The RPI is a fixed weight and fixed base index while the HICP is a chain index whose weights are reviewed on an annual basis. Additionally, newly significant goods and services are introduced into the HICP on an annual basis;
 - (c) The coverage of the HICP is based on an international classifications system, COICOP (Classification of Individual Consumption by Purpose). The way in which this broadly maps to the RPI groupings is shown in the following table:

| | COICOP Division | RPI Group |
|----|---|--|
| 01 | Food and non-alcoholic beverages | Food (including take-away food and food consumed in restaurants) |
| 02 | Alcoholic Beverages and Tobacco | Beverages and tobacco |
| 03 | Clothing and Footwear | Clothing and footwear |
| 04 | Housing, Water, Electricity, Gas and Other Fuels | Housing Water, electricity, gas and fuels |
| 05 | Furniture, Household Equipment and Routine Maintenance of the House | Household equipment and house maintenance costs |
| 06 | Health | Personal care and health |
| 07 | Transport | Transport and communication |
| 08 | Communication | |
| 09 | Recreation and Culture | Recreation and culture (including education) |
| 10 | Education | |
| 11 | Restaurants and Hotels | Restaurants (included under food) |
| 12 | Miscellaneous Goods and Services | Other goods and services |

This comparison is broad and indicative only. Therefore, users are advised to consult the NSO before comparing the results of these indices at such levels.

4. Price quotations in respect of the goods and services in the latest index series started being collected in December 2009. This latest index series may be linked to the previous one by using a linking coefficient of 1.1835.
5. Each monthly News Release on the Retail Price Index shall include three different measures of inflation as follows:
 - (a) The **monthly inflation** compares price levels between the two latest months. Although up to date, this can be affected by seasonal and other effects.
 - (b) The **annual inflation** measures price changes between the reference month and the same month of the previous year. This measure is responsive to recent changes in price levels but can be influenced by one-off effects in either month.
 - (c) The **12-month average rate** overcomes the volatility of the above two rates by comparing average Retail Price Indices in the latest 12 months to the average of the previous 12 months. This measure is less sensitive to transient changes in prices.

6. The data in this release are not normally subject to revision.
7. More information on the Retail Price Index is available from the NSO website at www.nso.gov.mt
8. An impact is a measure showing the change in the inflation due to the inclusion of an index. The impact takes account of both the weight and the annual rate of inflation by sub-index. Figures may not add up due to rounding.