

29 January 2015 | 1100 hrs | 020/2015

There were two fatalities in the fourth quarter of 2014.

## Traffic Accidents: Q4/2014

In the fourth quarter of 2014, the number of reported traffic accidents reached 3,632, an increase of 264 cases over the corresponding quarter in 2013. Increases were recorded in most districts, the biggest percentage increase (16.3 per cent) occurring in the Northern district. The Northern Harbour registered most accidents - 1,400 cases, or 38.5 per cent of the total (Table 1).

Reported traffic casualties number 408, of which 255 involved drivers. In this group, 216 injuries were slight and another 39 were grievous. Thirty-two other persons (nine passengers and 23 pedestrians) suffered grievous injuries, while 119 (56 passengers and 63 pedestrians) were slightly injured. Furthermore, the injuries suffered by two pedestrians proved fatal (Tables 3-6).

On a gender basis, the 335 slightly-injured persons were divided into 183 males and 152 females. Grievously-injured persons totalled 71, the majority being males. The fatalities in the fourth quarter involved one male and one female. The majority of casualties were in the 25-39 age bracket (Table 10). A breakdown of traffic casualties reveals that 70.8 per cent were caused by passenger cars, followed by motorcycles at 17.6 per cent; 9.8 per cent were caused by goods-carrying vehicles (Table 12).

In the fourth quarter of 2014, the highest traffic casualty rate occurred on Saturdays, accounting for 15.7 per cent of total casualties. The highest accident rate was recorded on Tuesdays, totalling 593 cases, and the lowest on Sundays, with 330 cases. Sunday, however, registered the highest casualty-to-accident ratio (Table 14). The daily time bracket in which most accidents occurred was between 09:00 and 11:59, with 809 cases, or 22.3 per cent of the total. This is followed by the 12:00-14:59 time bracket, with 776 cases (21.4 per cent of the total). The lowest number of accidents on a daily basis occurred between 00:00 and 02:59 (Table 16).

In the period under review, Birkirkara continued to register the highest rate of traffic accidents, with 253 cases. Ħal Qormi and Msida were next, with 194 and 177 reported accidents respectively (Chart 7).

### Annual Perspective

Compiled by:

**Unit A4: International  
Trade and Transport  
Statistics**

**Directorate A: Economic  
Statistics**

Further information on data:

**Mr Anthony PORTELLI**  
T. +356 2599 7160  
E. anthony.portelli@gov.mt

In 2014, the total number of recorded accidents totalled 14,473, an increase of 2.9 per cent over 2013. The Northern Harbour district registered the highest number of traffic accidents with 5,349 cases, or 37.0 per cent of the total.

Last year there were 1,796 persons (1,022 males and 774 females) who sustained injuries due to traffic accidents. Of these, ten cases (six males and four females) proved fatal (Table 11). In 2014, 73.8 per cent of casualties were caused by passenger cars and 15.5 per cent by motorcycles (Table 13).

On a locality level, the highest number of traffic accidents occurred in Birkirkara with 962 cases. Ħal Qormi and Marsa were next, with 746 and 674 reported accidents respectively (Chart 8) ■

Kindly indicate source when quoting from this release.  
The advance release calendar may be consulted at [www.nso.gov.mt](http://www.nso.gov.mt)

Issued by: **External Cooperation and Communication Unit, National Statistics Office, Lascaris, Valletta VLT 2000, Malta.**  
T. +356 2599 7219 F. +356 2599 7205 E. [nso@gov.mt](mailto:nso@gov.mt)

**Table 1. Total road traffic accidents**

Region/District	January-December		October-December			
	2013	2014	2013	2014	Change	Percentage change
<b>MALTA</b>	<b>14,070</b>	<b>14,473</b>	<b>3,368</b>	<b>3,632</b>	<b>264</b>	<b>7.8</b>
<b>Malta</b>	<b>13,413</b>	<b>13,726</b>	<b>3,208</b>	<b>3,449</b>	<b>241</b>	<b>7.5</b>
Southern Harbour	3,036	3,117	803	792	-11	-1.4
Northern Harbour	5,313	5,349	1,265	1,400	135	10.7
South Eastern	1,264	1,382	274	318	44	16.1
Western	1,647	1,681	406	404	-2	-0.5
Northern	2,153	2,197	460	535	75	16.3
<b>Gozo and Comino</b>	<b>657</b>	<b>747</b>	<b>160</b>	<b>183</b>	<b>23</b>	<b>14.4</b>

**Table 2. Minor road traffic accidents**

Region/District	January-December		October-December			
	2013	2014	2013	2014	Change	Percentage change
<b>MALTA</b>	<b>12,794</b>	<b>13,028</b>	<b>3,087</b>	<b>3,290</b>	<b>203</b>	<b>6.6</b>
<b>Malta</b>	<b>12,210</b>	<b>12,377</b>	<b>2,944</b>	<b>3,137</b>	<b>193</b>	<b>6.6</b>
Southern Harbour	2,757	2,814	737	717	-20	-2.7
Northern Harbour	4,901	4,898	1,183	1,297	114	9.6
South Eastern	1,127	1,202	251	278	27	10.8
Western	1,484	1,515	363	366	3	0.8
Northern	1,941	1,948	410	479	69	16.8
<b>Gozo and Comino</b>	<b>584</b>	<b>651</b>	<b>143</b>	<b>153</b>	<b>10</b>	<b>7.0</b>

**Table 3. Casualties in road traffic accidents**

Region/District	January-December		October-December			
	2013	2014	2013	2014	Change	Percentage change
<b>MALTA</b>	<b>1,582</b>	<b>1,796</b>	<b>359</b>	<b>408</b>	<b>49</b>	<b>13.6</b>
<b>Malta</b>	<b>1,493</b>	<b>1,676</b>	<b>337</b>	<b>375</b>	<b>38</b>	<b>11.3</b>
Southern Harbour	353	374	85	94	9	10.6
Northern Harbour	473	521	95	109	14	14.7
South Eastern	174	218	28	47	19	67.9
Western	217	220	60	51	-9	-15.0
Northern	276	343	69	74	5	7.2
<b>Gozo and Comino</b>	<b>89</b>	<b>120</b>	<b>22</b>	<b>33</b>	<b>11</b>	<b>50.0</b>

**Table 4. Injuries sustained by drivers in traffic accidents: October-December**

Region/District	2013				2014			
	Slight	Grievous	Fatal	Total	Slight	Grievous	Fatal	Total
<b>MALTA</b>	<b>178</b>	<b>37</b>	<b>2</b>	<b>217</b>	<b>216</b>	<b>39</b>	<b>0</b>	<b>255</b>
<b>Malta</b>	<b>169</b>	<b>34</b>	<b>2</b>	<b>205</b>	<b>203</b>	<b>33</b>	<b>0</b>	<b>236</b>
Southern Harbour	47	3	1	51	46	11	0	57
Northern Harbour	47	9	0	56	72	5	0	77
South Eastern	12	3	1	16	26	5	0	31
Western	32	9	0	41	23	3	0	26
Northern	31	10	0	41	36	9	0	45
<b>Gozo and Comino</b>	<b>9</b>	<b>3</b>	<b>0</b>	<b>12</b>	<b>13</b>	<b>6</b>	<b>0</b>	<b>19</b>

**Table 5. Injuries sustained by passengers in traffic accidents: October-December**

Region/District	2013				2014			
	Slight	Grievous	Fatal	Total	Slight	Grievous	Fatal	Total
<b>MALTA</b>	<b>78</b>	<b>6</b>	<b>0</b>	<b>84</b>	<b>56</b>	<b>9</b>	<b>0</b>	<b>65</b>
<b>Malta</b>	<b>72</b>	<b>6</b>	<b>0</b>	<b>78</b>	<b>53</b>	<b>7</b>	<b>0</b>	<b>60</b>
Southern Harbour	20	1	0	21	16	2	0	18
Northern Harbour	17	1	0	18	4	1	0	5
South Eastern	9		0	9	9	0	0	9
Western	12	1	0	13	10	2	0	12
Northern	14	3	0	17	14	2	0	16
<b>Gozo and Comino</b>	<b>6</b>	<b>0</b>	<b>0</b>	<b>6</b>	<b>3</b>	<b>2</b>	<b>0</b>	<b>5</b>

**Table 6. Injuries sustained by pedestrians in traffic accidents: October-December**

Region/District	2013				2014			
	Slight	Grievous	Fatal	Total	Slight	Grievous	Fatal	Total
<b>MALTA</b>	<b>38</b>	<b>18</b>	<b>2</b>	<b>58</b>	<b>63</b>	<b>23</b>	<b>2</b>	<b>88</b>
<b>Malta</b>	<b>36</b>	<b>16</b>	<b>2</b>	<b>54</b>	<b>57</b>	<b>20</b>	<b>2</b>	<b>79</b>
Southern Harbour	10	3	0	13	17	2	0	19
Northern Harbour	14	6	1	21	21	6	0	27
South Eastern	1	2	0	3	4	3	0	7
Western	5	1	0	6	6	5	2	13
Northern	6	4	1	11	9	4	0	13
<b>Gozo and Comino</b>	<b>2</b>	<b>2</b>	<b>0</b>	<b>4</b>	<b>6</b>	<b>3</b>	<b>0</b>	<b>9</b>

Table 7. Total injuries sustained in traffic accidents: January-December

Region/District	2013				2014			
	Slight	Grievous	Fatal	Total	Slight	Grievous	Fatal	Total
<b>MALTA</b>	<b>1,299</b>	<b>265</b>	<b>18</b>	<b>1,582</b>	<b>1,494</b>	<b>292</b>	<b>10</b>	<b>1,796</b>
<b>Malta</b>	<b>1,237</b>	<b>239</b>	<b>17</b>	<b>1,493</b>	<b>1,406</b>	<b>260</b>	<b>10</b>	<b>1,676</b>
Southern Harbour	309	39	5	<b>353</b>	319	52	3	<b>374</b>
Northern Harbour	392	77	4	<b>473</b>	444	75	2	<b>521</b>
South Eastern	141	32	1	<b>174</b>	182	35	1	<b>218</b>
Western	180	35	2	<b>217</b>	180	38	2	<b>220</b>
Northern	215	56	5	<b>276</b>	281	60	2	<b>343</b>
<b>Gozo and Comino</b>	<b>62</b>	<b>26</b>	<b>1</b>	<b>89</b>	<b>88</b>	<b>32</b>	<b>0</b>	<b>120</b>

Table 8. Traffic casualties by month and type of injury: January-December

Month	2013				2014			
	Slight	Grievous	Fatal	Total	Slight	Grievous	Fatal	Total
January	100	22	0	<b>122</b>	76	29	3	<b>108</b>
February	80	22	0	<b>102</b>	106	23	0	<b>129</b>
March	117	22	3	<b>142</b>	115	25	2	<b>142</b>
April	106	22	0	<b>128</b>	124	22	0	<b>146</b>
May	129	27	3	<b>159</b>	152	25	1	<b>178</b>
June	120	28	1	<b>149</b>	143	24	1	<b>168</b>
July	147	24	2	<b>173</b>	176	27	0	<b>203</b>
August	106	25	1	<b>132</b>	150	25	0	<b>175</b>
September	100	12	4	<b>116</b>	117	21	1	<b>139</b>
October	101	14	2	<b>117</b>	120	20	1	<b>141</b>
November	98	18	1	<b>117</b>	115	21	0	<b>136</b>
December	95	29	1	<b>125</b>	100	30	1	<b>131</b>
<b>Total</b>	<b>1,299</b>	<b>265</b>	<b>18</b>	<b>1,582</b>	<b>1,494</b>	<b>292</b>	<b>10</b>	<b>1,796</b>

**Table 9. Traffic accidents and casualty-to-accident ratio by month: January-December**

<b>Month</b>	<b>2013</b>	<b>2014</b>	<b>Change</b>	<b>Percentage change</b>	<b>Casualties-to-accident ratio (%)</b>
January	1,134	1,063	-71	-6.3	10.2
February	1,074	1,069	-5	-0.5	12.1
March	1,193	1,112	-81	-6.8	12.8
April	1,166	1,185	19	1.6	12.3
May	1,311	1,341	30	2.3	13.3
June	1,269	1,269	0	0.0	13.2
July	1,314	1,329	15	1.1	15.3
August	1,134	1,296	162	14.3	13.5
September	1,107	1,177	70	6.3	11.8
October	1,169	1,332	163	13.9	10.6
November	1,060	1,119	59	5.6	12.2
December	1,139	1,181	42	3.7	11.1
<b>Total</b>	<b>14,070</b>	<b>14,473</b>	<b>403</b>	<b>2.9</b>	<b>12.4</b>

Table 10. Traffic casualties by type of injury, age group and sex: October-December

Age group	2013				2014			
	Slight	Grievous	Fatal	Total	Slight	Grievous	Fatal	Total
<b>Males</b>								
0-14	9	4	0	<b>13</b>	6	0	0	<b>6</b>
15-24	23	12	0	<b>35</b>	45	8	0	<b>53</b>
25-39	54	15	1	<b>70</b>	59	16	0	<b>75</b>
40-59	39	8	2	<b>49</b>	58	12	0	<b>70</b>
60+	22	6	0	<b>28</b>	15	8	1	<b>24</b>
unknown	2	0	0	<b>2</b>	0	2	0	<b>2</b>
<b>Total</b>	<b>149</b>	<b>45</b>	<b>3</b>	<b>197</b>	<b>183</b>	<b>46</b>	<b>1</b>	<b>230</b>
<b>Females</b>								
0-14	5	1	0	<b>6</b>	12	2	0	<b>14</b>
15-24	37	4	0	<b>41</b>	31	5	0	<b>36</b>
25-39	53	4	0	<b>57</b>	46	2	0	<b>48</b>
40-59	30	4	1	<b>35</b>	40	7	0	<b>47</b>
60+	19	3	0	<b>22</b>	22	9	1	<b>32</b>
unknown	1	0	0	<b>1</b>	1	0	0	<b>1</b>
<b>Total</b>	<b>145</b>	<b>16</b>	<b>1</b>	<b>162</b>	<b>152</b>	<b>25</b>	<b>1</b>	<b>178</b>
<b>Total</b>								
0-14	14	5	0	<b>19</b>	18	2	0	<b>20</b>
15-24	60	16	0	<b>76</b>	76	13	0	<b>89</b>
25-39	107	19	1	<b>127</b>	105	18	0	<b>123</b>
40-59	69	12	3	<b>84</b>	98	19	0	<b>117</b>
60+	41	9	0	<b>50</b>	37	17	2	<b>56</b>
unknown	3	0	0	<b>3</b>	1	2	0	<b>3</b>
<b>Total</b>	<b>294</b>	<b>61</b>	<b>4</b>	<b>359</b>	<b>335</b>	<b>71</b>	<b>2</b>	<b>408</b>

Table 11. Traffic casualties by type of injury, age group and sex: January-December

Age group	2013				2014			
	Slight	Grievous	Fatal	Total	Slight	Grievous	Fatal	Total
<b>Males</b>								
0-14	53	10	0	<b>63</b>	44	12	0	<b>56</b>
15-24	148	44	2	<b>194</b>	189	45	1	<b>235</b>
25-39	238	55	4	<b>297</b>	269	47	3	<b>319</b>
40-59	190	48	4	<b>242</b>	234	42	1	<b>277</b>
60+	86	35	4	<b>125</b>	100	31	1	<b>132</b>
unknown	6	0	0	<b>6</b>	1	2	0	<b>3</b>
<b>Total</b>	<b>721</b>	<b>192</b>	<b>14</b>	<b>927</b>	<b>837</b>	<b>179</b>	<b>6</b>	<b>1,022</b>
<b>Females</b>								
0-14	36	4	0	<b>40</b>	51	5	0	<b>56</b>
15-24	134	17	1	<b>152</b>	154	30	0	<b>184</b>
25-39	192	20	0	<b>212</b>	221	22	1	<b>244</b>
40-59	144	16	1	<b>161</b>	154	22	0	<b>176</b>
60+	71	16	2	<b>89</b>	75	34	3	<b>112</b>
unknown	1	0	0	<b>1</b>	2	0	0	<b>2</b>
<b>Total</b>	<b>578</b>	<b>73</b>	<b>4</b>	<b>655</b>	<b>657</b>	<b>113</b>	<b>4</b>	<b>774</b>
<b>Total</b>								
0-14	89	14	0	<b>103</b>	95	17	0	<b>112</b>
15-24	282	61	3	<b>346</b>	343	75	1	<b>419</b>
25-39	430	75	4	<b>509</b>	490	69	4	<b>563</b>
40-59	334	64	5	<b>403</b>	388	64	1	<b>453</b>
60+	157	51	6	<b>214</b>	175	65	4	<b>244</b>
unknown	7	0	0	<b>7</b>	3	2	0	<b>5</b>
<b>Total</b>	<b>1,299</b>	<b>265</b>	<b>18</b>	<b>1,582</b>	<b>1,494</b>	<b>292</b>	<b>10</b>	<b>1,796</b>

Table 12. Traffic casualties by type of injury, age group and vehicle type: October-December

Vehicle type	2013 Total	2014			
		Slight	Grievous	Fatal	Total
<b>0-14</b>					
Motorcycles	17	0	0	0	0
Passenger cars	0	16	2	0	18
Coaches and buses	0	0	0	0	0
Goods vehicles	1	2	0	0	2
Unknown	1	0	0	0	0
<b>Total</b>	<b>19</b>	<b>18</b>	<b>2</b>	<b>0</b>	<b>20</b>
<b>15-24</b>					
Motorcycles	8	14	6	0	20
Passenger cars	61	54	6	0	60
Coaches and buses	2	0	0	0	0
Goods vehicles	2	8	1	0	9
Unknown	3	0	0	0	0
<b>Total</b>	<b>76</b>	<b>76</b>	<b>13</b>	<b>0</b>	<b>89</b>
<b>25-39</b>					
Motorcycles	29	12	8	0	20
Passenger cars	82	85	9	0	94
Coaches and buses	4	1	1	0	2
Goods vehicles	11	6	0	0	6
Unknown	1	1	0	0	1
<b>Total</b>	<b>127</b>	<b>105</b>	<b>18</b>	<b>0</b>	<b>123</b>
<b>40-59</b>					
Motorcycles	15	18	9	0	27
Passenger cars	60	64	8	0	72
Coaches and buses	3	1	1	0	2
Goods vehicles	5	14	1	0	15
Unknown	1	1	0	0	1
<b>Total</b>	<b>84</b>	<b>98</b>	<b>19</b>	<b>0</b>	<b>117</b>
<b>60+</b>					
Motorcycles	8	3	1	0	4
Passenger cars	32	29	12	2	43
Coaches and buses	1	0	0	0	0
Goods vehicles	6	4	4	0	8
Unknown	3	1	0	0	1
<b>Total</b>	<b>50</b>	<b>37</b>	<b>17</b>	<b>2</b>	<b>56</b>
<b>Age unknown</b>					
Motorcycles	1	0	1	0	1
Passenger cars	2	1	1	0	2
Coaches and buses	0	0	0	0	0
Goods vehicles	0	0	0	0	0
Unknown	0	0	0	0	0
<b>Total</b>	<b>3</b>	<b>1</b>	<b>2</b>	<b>0</b>	<b>3</b>
<b>Total</b>					
Motorcycles	78	47	25	0	72
Passenger cars	237	249	38	2	289
Coaches and buses	10	2	2	0	4
Goods vehicles	25	34	6	0	40
Unknown	9	3	0	0	3
<b>Total</b>	<b>359</b>	<b>335</b>	<b>71</b>	<b>2</b>	<b>408</b>



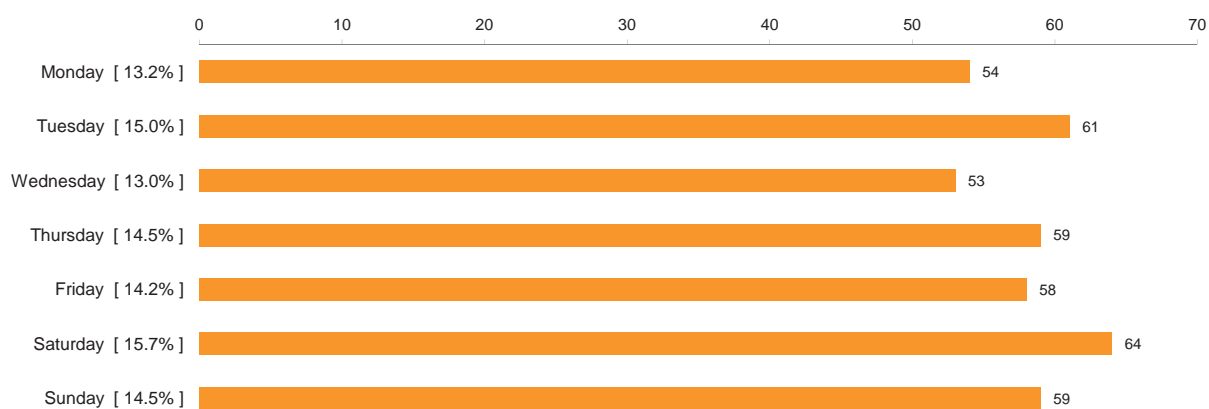
Table 13. Traffic casualties by type of injury, age group and vehicle type: January-December

Vehicle type	2013 Total	2014			
		Slight	Grievous	Fatal	Total
<b>0-14</b>					
Motorcycles	3	2	2	0	4
Passenger cars	83	86	13	0	99
Coaches and buses	10	1	0	0	1
Goods vehicles	6	5	2	0	7
Unknown	1	1	0	0	1
<b>Total</b>	<b>103</b>	<b>95</b>	<b>17</b>	<b>0</b>	<b>112</b>
<b>15-24</b>					
Motorcycles	40	46	15	0	61
Passenger cars	283	256	55	0	311
Coaches and buses	3	3	1	0	4
Goods vehicles	9	34	4	1	39
Unknown	11	4	0	0	4
<b>Total</b>	<b>346</b>	<b>343</b>	<b>75</b>	<b>1</b>	<b>419</b>
<b>25-39</b>					
Motorcycles	109	64	26	1	91
Passenger cars	355	388	33	3	424
Coaches and buses	9	5	3	0	8
Goods vehicles	32	29	6	0	35
Unknown	4	4	1	0	5
<b>Total</b>	<b>509</b>	<b>490</b>	<b>69</b>	<b>4</b>	<b>563</b>
<b>40-59</b>					
Motorcycles	91	70	27	0	97
Passenger cars	264	270	31	1	302
Coaches and buses	8	6	3	0	9
Goods vehicles	33	40	3	0	43
Unknown	7	2	0	0	2
<b>Total</b>	<b>403</b>	<b>388</b>	<b>64</b>	<b>1</b>	<b>453</b>
<b>60+</b>					
Motorcycles	28	19	5	0	24
Passenger cars	148	132	50	3	185
Coaches and buses	9	7	1	0	8
Goods vehicles	18	15	6	1	22
Unknown	11	2	3	0	5
<b>Total</b>	<b>214</b>	<b>175</b>	<b>65</b>	<b>4</b>	<b>244</b>
<b>Age unknown</b>					
Motorcycles	4	0	1	0	1
Passenger cars	3	3	1	0	4
Coaches and buses	0	0	0	0	0
Goods vehicles	0	0	0	0	0
Unknown	0	0	0	0	0
<b>Total</b>	<b>7</b>	<b>3</b>	<b>2</b>	<b>0</b>	<b>5</b>
<b>Total</b>					
Motorcycles	275	201	76	1	278
Passenger cars	1,136	1,135	183	7	1,325
Coaches and buses	39	22	8	0	30
Goods vehicles	98	123	21	2	146
Unknown	34	13	4	0	17
<b>Total</b>	<b>1,582</b>	<b>1,494</b>	<b>292</b>	<b>10</b>	<b>1,796</b>

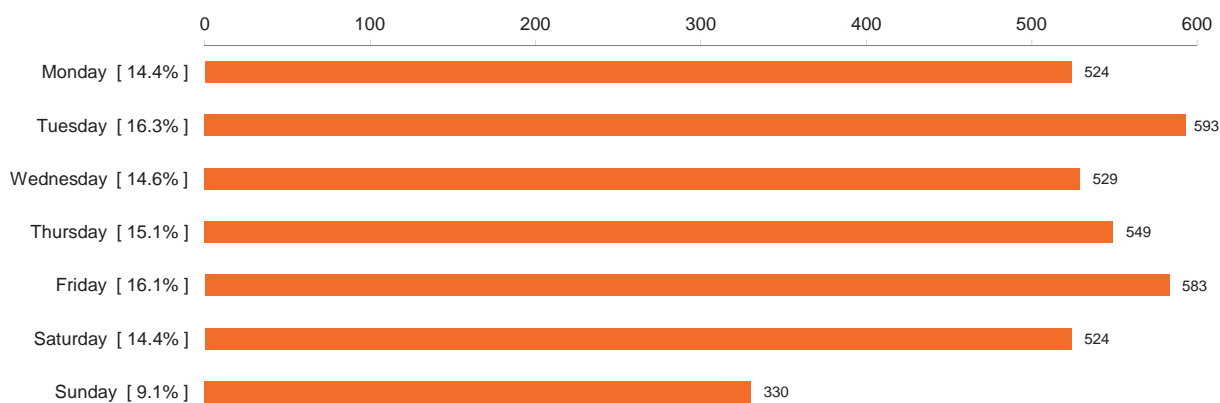
**Table 14. Traffic casualties by day of the week: October-December 2014**

	Monday	Tuesday	Wednesday	Thursday	Friday	Saturday	Sunday	Total
<b>Traffic casualties</b>	54	61	53	59	58	64	59	<b>408</b>
<b>Traffic accidents</b>	524	593	529	549	583	524	330	<b>3,632</b>
<b>Casualty-to-accident ratio (%)</b>	10.3	10.3	10.0	10.7	9.9	12.2	17.9	<b>11.2</b>

**Chart 1. Traffic casualties by day of the week: October-December 2014**



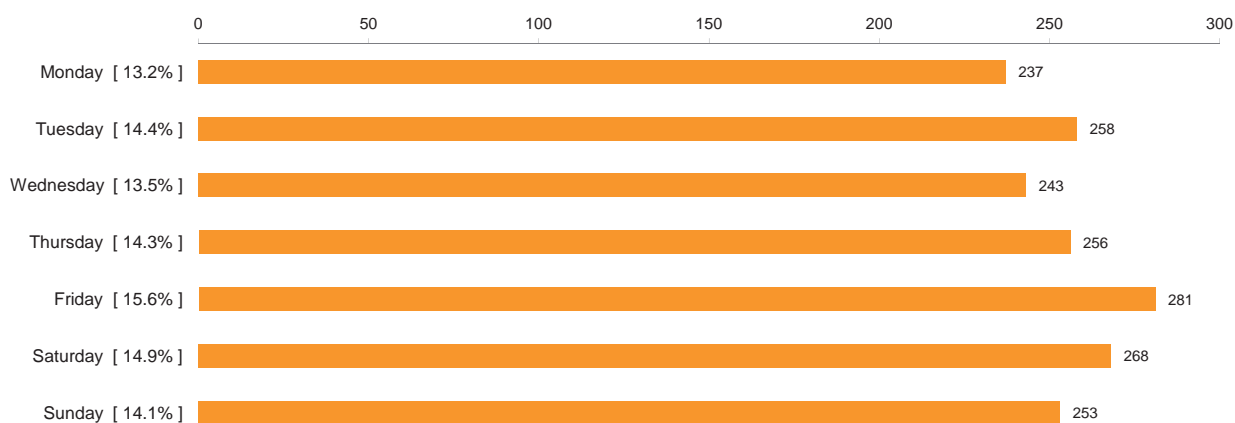
**Chart 2. Traffic accidents by day of the week: October-December 2014**



**Table 15. Traffic casualties by day of the week: January-December 2014**

	Monday	Tuesday	Wednesday	Thursday	Friday	Saturday	Sunday	Total
<b>Traffic casualties</b>	237	258	243	256	281	268	253	<b>1,796</b>
<b>Traffic accidents</b>	2,138	2,302	2,082	2,208	2,304	2,033	1,406	<b>14,473</b>
<b>Casualty-to-accident ratio (%)</b>	11.1	11.2	11.7	11.6	12.2	13.2	18.0	<b>12.4</b>

**Chart 3. Traffic casualties by day of the week: January-December 2014**



**Chart 4. Traffic accidents by day of the week: January-December 2014**



Table 16. Traffic accidents by day and time of day: October-December 2014

Time bracket	Day							Total
	Monday	Tuesday	Wednesday	Thursday	Friday	Saturday	Sunday	
00:00 - 02:59	6	6	8	7	8	19	20	74
03:00 - 05:59	8	9	3	8	2	30	31	91
06:00 - 08:59	101	122	105	108	85	52	25	598
09:00 - 11:59	121	112	109	126	129	146	66	809
12:00 - 14:59	103	134	125	117	128	115	54	776
15:00 - 17:59	105	124	101	110	120	76	74	710
18:00 - 20:59	58	74	58	56	71	60	44	421
21:00 - 23:59	22	12	20	17	40	26	16	153
<b>Total</b>	<b>524</b>	<b>593</b>	<b>529</b>	<b>549</b>	<b>583</b>	<b>524</b>	<b>330</b>	<b>3,632</b>

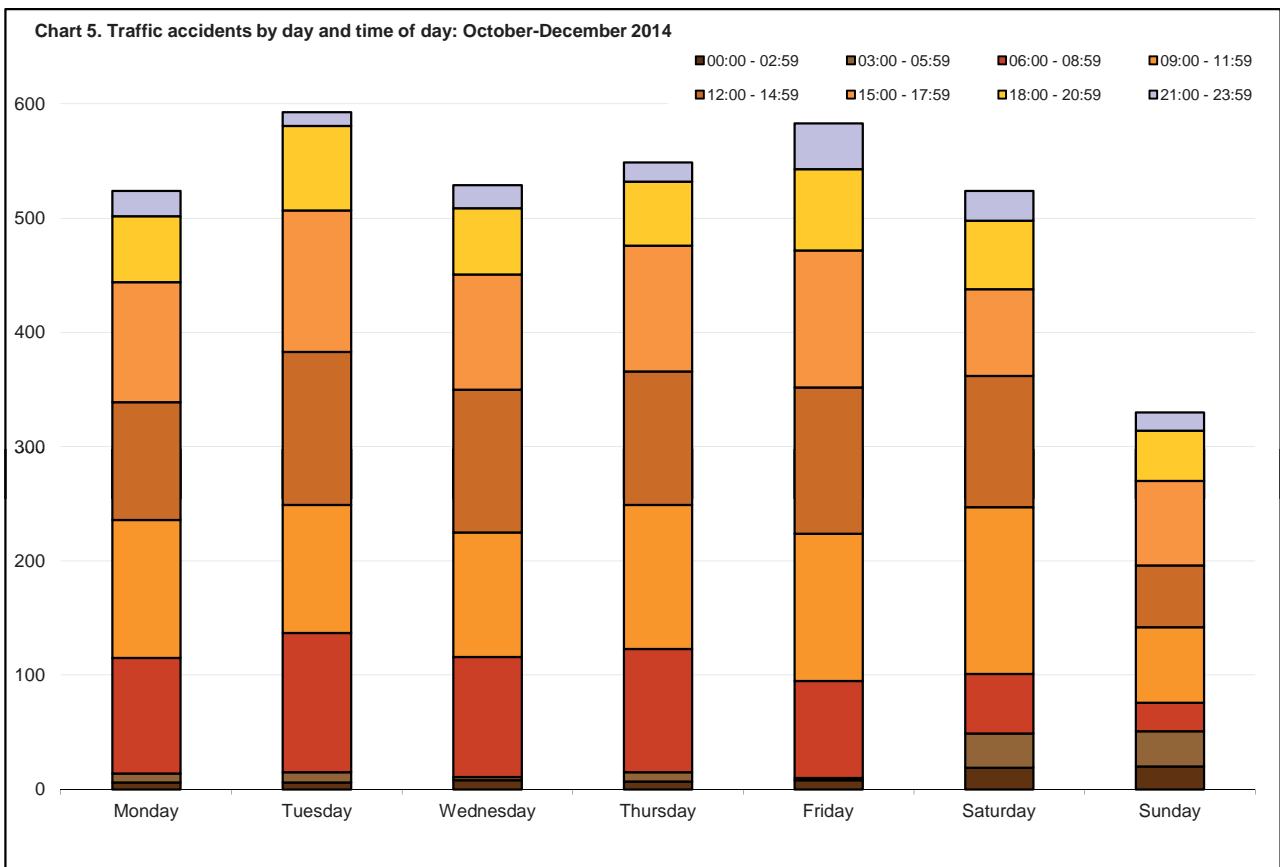


Table 17. Traffic accidents by day and time of day: January-December 2014

Time bracket	Day							Total
	Monday	Tuesday	Wednesday	Thursday	Friday	Saturday	Sunday	
00:00 - 02:59	39	27	37	49	30	98	100	380
03:00 - 05:59	37	22	22	34	23	126	115	379
06:00 - 08:59	339	398	366	378	368	229	107	2,185
09:00 - 11:59	477	458	444	467	447	510	274	3,077
12:00 - 14:59	445	500	453	449	515	433	227	3,022
15:00 - 17:59	469	516	435	469	519	309	263	2,980
18:00 - 20:59	253	309	243	291	283	222	205	1,806
21:00 - 23:59	79	72	82	71	119	106	115	644
<b>Total</b>	<b>2,138</b>	<b>2,302</b>	<b>2,082</b>	<b>2,208</b>	<b>2,304</b>	<b>2,033</b>	<b>1,406</b>	<b>14,473</b>

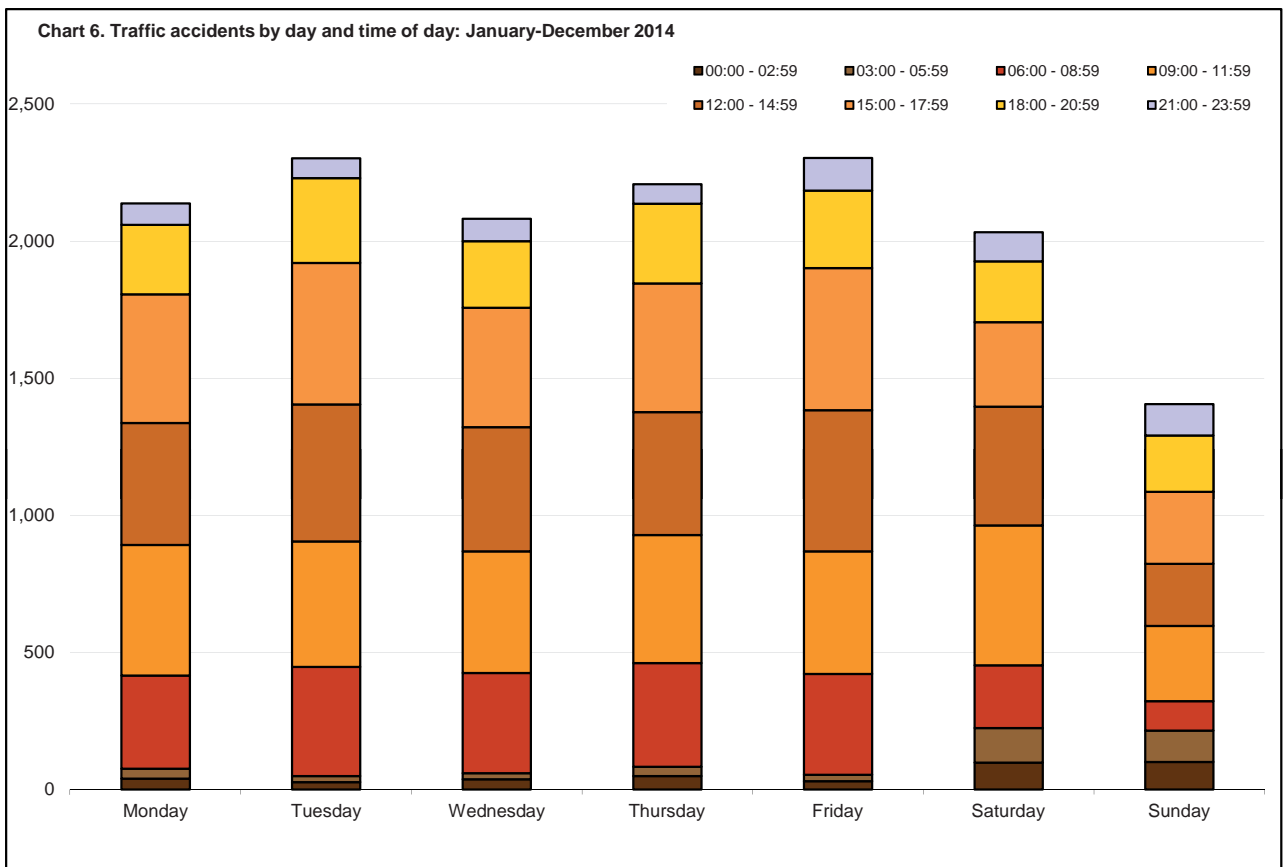


Table 18. Traffic accidents by locality ...

District/Locality	January-December		October-December		Change
	2013	2014	2013	2014	
<b>Southern Harbour</b>	<b>3,036</b>	<b>3,117</b>	<b>803</b>	<b>792</b>	<b>-11</b>
Cospicua	131	93	37	28	-9
Fgura	268	263	62	64	2
Floriana	199	219	53	54	1
Hal Luqa	345	349	103	88	-15
Hal Tarxien	215	288	59	70	11
Haz-Żabbar	335	379	93	96	3
Kalkara	32	41	9	11	2
Marsa	738	674	194	151	-43
Paola	439	478	116	144	28
Santa Luċija	46	31	10	4	-6
Senglea	36	25	14	6	-8
Valletta	200	207	41	50	9
Vittoriosa	38	59	10	22	12
Xghajra	14	11	2	4	2
<b>Northern Harbour</b>	<b>5,313</b>	<b>5,349</b>	<b>1,265</b>	<b>1,400</b>	<b>135</b>
Birkirkara	845	962	210	253	43
Gżira	448	426	101	97	-4
Hal Qormi	794	746	176	194	18
Hamrun	327	310	81	84	3
Msida	569	614	158	177	19
Pembroke	69	72	14	15	1
San Ġwann	447	515	114	146	32
Santa Venera	320	272	86	73	-13
St Julian's	482	489	107	131	24
Swieqi	282	212	63	52	-11
Ta' Xbiex	80	58	15	13	-2
Tal-Pietà	181	199	38	41	3
Tas-Sliema	469	474	102	124	22
<b>South Eastern</b>	<b>1,264</b>	<b>1,382</b>	<b>274</b>	<b>318</b>	<b>44</b>
Birżebbuġa	190	168	46	46	0
Gudja	156	173	29	41	12
Hal Għaxaq	79	89	12	18	6
Hal Kirkop	38	68	8	12	4
Hal Safi	29	31	10	2	-8
Marsaskala	208	222	49	53	4
Marsaxlokk	80	76	11	19	8
Mqabba	53	67	8	14	6
Qrendi	27	31	6	7	1
Żejtun	294	301	68	70	2
Żurrieq	110	156	27	36	9
<b>Western</b>	<b>1,647</b>	<b>1,681</b>	<b>406</b>	<b>404</b>	<b>-2</b>
Had-Dingli	46	40	13	12	-1
Hal Balzan	127	129	40	31	-9
Hal Lija	180	207	47	49	2
H'Attard	376	399	96	95	-1
Haz-Żebbuġ	291	285	69	73	4
Iklin	92	86	24	28	4
Mdina	39	34	7	9	2
Mtarfa	28	22	6	4	-2
Rabat	331	352	66	79	13
Siġġiewi	137	127	38	24	-14
<b>Northern</b>	<b>2,153</b>	<b>2,197</b>	<b>460</b>	<b>535</b>	<b>75</b>
Hal Għargħur	76	83	22	28	6
Mellieħa	336	332	55	74	19
Mġarr	126	112	27	21	-6
Mosta	546	578	115	137	22
Naxxar	489	452	121	122	1
St Paul's Bay	580	640	120	153	33

... Table 18. Traffic accidents by locality

District/Locality	January-December		October-December		
	2013	2014	2013	2014	Change
<b>Gozo and Comino</b>	<b>657</b>	<b>747</b>	<b>160</b>	<b>183</b>	<b>23</b>
Fontana	7	13	1	1	-
Għajnsielem	83	84	26	24	-2
Għarb	22	14	8	3	-5
Għasri	10	8	2	1	-1
Munxar	26	17	4	5	1
Nadur	44	51	8	17	9
Qala	22	23	5	3	-2
San Lawrenz	9	10	2	1	-1
Ta' Kerċem	12	11	4	7	3
Ta' Sannat	18	18	2	2	-
Victoria	195	257	49	56	7
Xagħra	58	54	16	13	-3
Xewkija	105	116	23	34	11
Żebbuġ	46	71	10	16	6

Chart 7. The ten localities in which most accidents occurred: October-December 2014

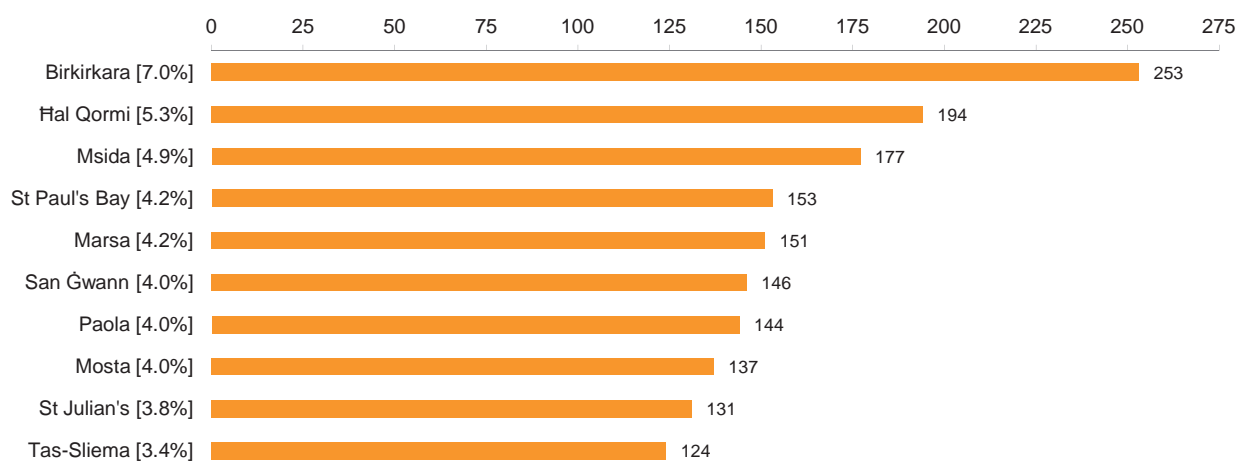
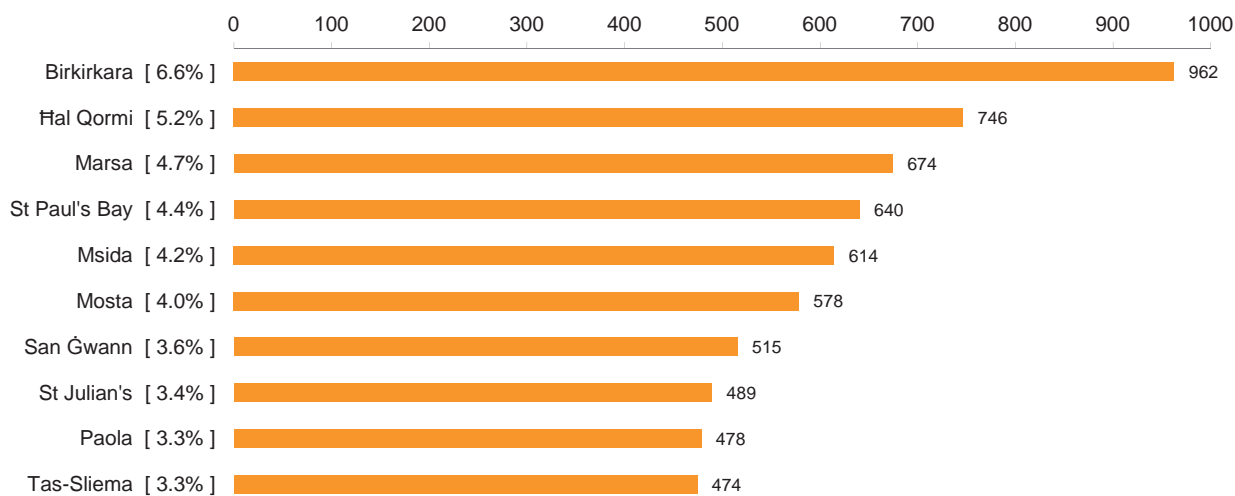


Chart 8. The ten localities in which most accidents occurred: January-December 2014



## Methodological Notes

1. Traffic accident data are compiled from administrative information provided by the Police Department, the Guard and Warden Services Limited and the Malta Insurance Association.
2. The type of casualty (slight or grievous) is determined by the Health Department. The definitions of deaths caused by road accidents refer to the European Conference for Ministers of Transport (ECMT) and the United Nations Economic Commission for Europe (UNECE).
3. The UNECE definition of fatal injury is: "Any person who was killed outright or who died within 30 days as a result of the accident".
4. Minor traffic accidents refer to accidents in which no persons are injured and which are assessed by the police and by the traffic wardens.
5. Minor traffic accidents which are not reported, or those reported to Insurance Agencies by means of the Traffic Accident Form (i.e. police or traffic wardens are not called on the accident scene and those involved in the accident decide to settle by filling in the form), are not accounted for.
6. More information relating to this news release may be accessed at: <http://nso.gov.mt/metadata/concepts.aspx>