

30 January 2015 | 1100 hrs | 021/2015

Total inbound tourist trips for December 2014 were estimated at 66,619, an increase of 1.4 per cent when compared to the corresponding month of 2013. Excluding the passengers who stayed overnight on board their berthed cruise ship, total inbound tourist trips amounted to 66,232.

Inbound Tourism: December 2014

A total of 53,136 inbound visits were carried out for holiday purposes, while a further 8,176 were undertaken for business. Inbound tourists from EU Member States went up by 7.7 per cent to 55,512. The largest proportion of inbound tourists were aged between 45 and 64, followed by those within the 25-44 age bracket (Table 1).

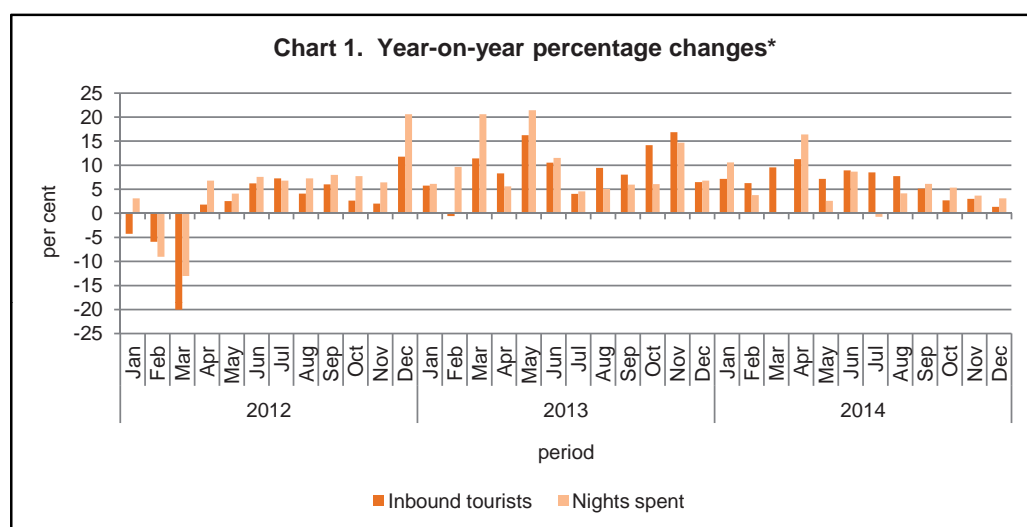
Total nights spent went up by 3.1 per cent when compared to December 2013, reaching 585,264. The largest share of guest nights (60.0 per cent) was spent in collective accommodation establishments (Table 3).

Total tourist expenditure was estimated at €51.7 million, an increase of 4.4 per cent over the corresponding month a year earlier (Table 4).

January-December 2014

Inbound tourism from January to December amounted to 1,714,533, an increase of 7.8 per cent over the same period in 2013 (Table 7). Total nights spent by inbound tourists went up by 4.9 per cent, reaching 13.5 million (Table 9).

Total tourism expenditure was estimated at €1.5 billion, 6.1 per cent higher than that recorded for the same period in 2013 (Table 10). Total per capita expenditure stood at €905, slightly lower than 2013 (Table 12) ■



Compiled by:

**Unit C3: Population and
Tourism Statistics**

**Directorate C: Social
Statistics**

Further information on data:

Mr Matthew ZERAFA

T. +356 2599 7630

E. matthew.zerafa@gov.mt

*These changes exclude overnight cruise passengers

Kindly indicate source when quoting from this release.

The advance release calendar may be consulted at www.nso.gov.mt

Issued by: **External Cooperation and Communication Unit, National Statistics Office, Lascaris, Valletta VLT 2000, Malta.**

T. +356 2599 7219 F. +356 2599 7205 E. nso@gov.mt

Table 1. Profile of inbound tourists

	December			Change	Percentage change
	2012	2013	2014		
Total (including Overnight Cruise Passengers*)	63,694	65,671	66,619	947	1.4
Overnight Cruise Passengers	2,321	326	387	61	-
Inbound Tourists	61,373	65,345	66,232	886	1.4
Mode of travel:					
Air	57,393	61,255	62,083	827	1.4
Sea	3,980	4,090	4,149	59	1.4
Sex:					
Males	35,549	37,569	37,592	24	-
Females	25,824	27,777	28,639	862	-
Age group:					
0-24	7,797	10,436	9,053	-1,383	-
25-44	20,480	24,133	20,960	-3,174	-13.2
45-64	21,069	20,574	22,831	2,258	11.0
65+	12,027	10,203	13,388	3,185	31.2
Markets:					
EU	50,502	51,531	55,512	3,981	7.7
<i>of which: Euro area</i>	28,429	28,767	30,360	1,593	5.5
Non-EU	10,870	13,814	10,720	-3,095	-22.4
Purpose of visit:					
Holiday	47,749	52,986	53,136	150	-
Business and professional	8,894	8,315	8,176	-139	-
Other	4,729	4,044	4,919	875	-
Organisation of stay:					
Package	24,490	24,836	28,126	3,290	13.2
Non-package	36,883	40,509	38,105	-2,404	-5.9
Frequency:					
First-time tourists	37,531	36,597	39,599	3,002	8.2
Repeat tourists	23,842	28,748	26,632	-2,116	-7.4
less than or equal to once a year	13,381	14,281	14,989	708	-
more than twice a year	10,461	14,467	11,643	-2,824	-19.5
Duration of visit:					
1-3 nights	14,824	16,104	15,336	-768	-
4-6 nights	14,542	15,913	15,610	-303	-
7+ nights	32,006	33,328	35,285	1,957	5.9
Average length of stay (nights)	8.7	8.7	8.8	0.1	1.1

* Figures in Tables 1 to 5 refer to Inbound Tourists. For details on overnight cruise passengers refer to Table 6.

Table 2. Inbound tourists, by type of accommodation

	December			Change	Percentage change
	2012	2013	2014	2014/2013	
	Total	61,373	65,345	66,232	886
Private accommodation	15,141	17,775	17,512	-263	-
Collective accommodation*	46,231	47,570	48,719	1,149	-

* Comprises hotels, guesthouses, hostels and tourist villages

Table 3. Total nights spent by inbound tourists, by type of accommodation

	December			Change	Percentage change
	2012	2013	2014	2014/2013	
	Total	531,352	567,553	585,264	17,711
Private accommodation	197,717	251,266	234,079	-17,188	-
Collective accommodation*	333,636	316,287	351,186	34,899	-

* Comprises hotels, guesthouses, hostels and tourist villages

Table 4. Total expenditure by inbound tourists, by expenditure categories

€000

	December			Change	Percentage change
	2012	2013	2014	2014/2013	
	Total	50,100	49,466	51,657	2,191
Package	13,449	13,062	15,453	2,392	18.3
Non-package	15,491	15,259	15,644	384	2.5
Air/sea fares	8,504	9,309	7,825	-1,485	-15.9
Accommodation	6,987	5,950	7,819	1,869	31.4
Other expenditure	21,160	21,145	20,560	-585	-2.8

Note: Estimates for expenditure are rounded to the nearest thousand.

Table 5. Inbound tourists, nights spent and total expenditure, by country of residence

	December			Change	Percentage change
	2012	2013	2014	2014/2013	
Total tourists	61,373	65,345	66,232	886	1.4
EU	50,502	51,531	55,512	3,981	7.7
<i>of which:</i>					
France	3,426	3,830	2,990	-841	-
Germany	5,962	5,463	7,447	1,984	36.3
Italy	11,042	13,143	13,079	-64	-
United Kingdom	19,378	19,053	19,613	560	-
Non-EU	10,870	13,814	10,720	-3,095	-22.4
Total nights	531,352	567,553	585,264	17,711	3.1
EU	439,712	406,306	479,553	73,248	18.0
<i>of which:</i>					
France	32,976	29,622	26,783	-2,839	-
Germany	56,483	47,403	74,345	26,942	56.8
Italy	58,393	64,783	97,459	32,676	-
United Kingdom	192,892	175,049	172,720	-2,329	-
Non-EU	91,640	161,248	105,711	-55,537	-34.4
Total expenditure (€000)	50,100	49,466	51,657	2,191	4.4
EU	36,628	34,876	39,533	4,657	13.4
<i>of which:</i>					
France	2,732	3,126	2,301	-825	-
Germany	5,321	5,168	6,599	1,431	27.7
Italy	5,446	6,079	6,949	871	-
United Kingdom	13,406	13,042	13,780	738	-
Non-EU	13,472	14,590	12,124	-2,466	-16.9

Note: Estimates for expenditure are rounded to the nearest thousand.

Table 6. Profile of overnight cruise passengers

	December			Change
	2012	2013	2014	2014/2013
	Total Overnight Cruise Passengers	2,321	326	387
Sex:				
Males	1,094	131	165	34
Females	1,227	195	222	27
Age group:				
0-19	5	0	0	0
20-39	17	5	8	3
40-59	216	6	16	10
60-79	1,688	210	231	21
80+	395	105	132	27
Markets:				
EU	2,300	324	384	60
<i>of which</i> : Euro area	37	5	7	2
Non-EU	21	2	3	1

Table 7. Profile of inbound tourists

	January-December			Change	Percentage change
	2012	2013	2014	2014/2013	
Total (including Overnight Cruise Passengers*)	1,455,615	1,590,991	1,714,533	123,542	7.8
Overnight Cruise Passengers	12,201	8,838	24,724	15,886	-
Inbound Tourists	1,443,414	1,582,153	1,689,809	107,656	6.8
Mode of travel:					
Air	1,401,323	1,538,628	1,641,344	102,716	6.7
Sea	42,091	43,525	48,465	4,940	11.3
Sex:					
Males	753,538	825,709	884,292	58,583	7.1
Females	689,876	756,444	805,517	49,073	6.5
Age group:					
0-24	287,426	322,257	335,467	13,210	4.1
25-44	451,336	504,461	570,271	65,809	13.0
45-64	504,934	528,943	553,400	24,457	4.6
65+	199,718	226,492	230,672	4,180	1.8
Markets:					
EU	1,226,625	1,316,781	1,417,237	100,456	7.6
<i>of which: Euro area</i>	654,697	709,597	752,676	43,079	6.1
Non-EU	216,789	265,372	272,572	7,201	2.7
Purpose of visit:					
Holiday	1,221,008	1,341,044	1,435,055	94,011	7.0
Business and professional	115,195	118,049	130,173	12,124	10.3
Other	107,212	123,060	124,582	1,522	1.2
Organisation of stay:					
Package	682,505	737,000	776,192	39,192	5.3
Non-package	760,909	845,153	913,618	68,465	8.1
Frequency:					
First-time tourists	992,138	1,085,403	1,158,649	73,246	6.7
Repeat tourists	451,276	496,750	531,161	34,411	6.9
less than or equal to once a year	329,250	350,136	374,728	24,593	7.0
at least twice a year	122,026	146,615	156,432	9,818	6.7
Duration of visit:					
1-3 nights	216,650	244,912	276,335	31,423	12.8
4-6 nights	304,335	337,807	385,090	47,283	14.0
7+ nights	922,430	999,435	1,028,384	28,950	2.9
Average length of stay (nights)	8.2	8.1	8.0	-0.1	-1.2

* Figures in Tables 7 to 12 refer to Inbound Tourists. For details on overnight cruise passengers refer to Table 13.

Table 8. Inbound tourists, by type of accommodation

persons

	January-December			Change	Percentage change
	2012	2013	2014	2014/2013	
	Total	1,443,414	1,582,153	1,689,809	107,656
Private accommodation	344,478	392,605	428,305	35,700	9.1
Collective accommodation*	1,098,936	1,189,548	1,261,504	71,956	6.0

* Comprises hotels, guesthouses, hostels and tourist villages

Table 9. Total nights spent by inbound tourists, by type of accommodation

nights

	January-December			Change	Percentage change
	2012	2013	2014	2014/2013	
	Total	11,859,521	12,890,268	13,522,112	631,844
Private accommodation	3,810,125	4,263,220	4,655,208	391,988	9.2
Collective accommodation*	8,049,395	8,627,048	8,866,904	239,856	2.8

* Comprises hotels, guesthouses, hostels and tourist villages

Table 10. Inbound tourists, nights spent and total expenditure, by country of residence

	January-December			Change	Percentage change
	2012	2013	2014	2014/2013	
Total tourists	1,443,414	1,582,153	1,689,809	107,656	6.8
Austria	19,827	25,739	27,567	1,828	7.1
Belgium	27,279	28,948	31,399	2,451	8.5
France	107,893	116,533	125,511	8,978	7.7
Germany	137,500	147,110	143,053	-4,057	-2.8
Ireland	27,731	30,224	30,722	498	-
Italy	202,200	233,777	262,631	28,854	12.3
Libya	17,217	34,621	30,770	-3,850	-11.1
Netherlands	39,191	41,486	44,697	3,210	7.7
Russia	31,563	40,048	34,220	-5,828	-14.6
Scandinavia*	97,363	105,068	108,647	3,579	3.4
Spain	60,223	53,278	42,285	-10,993	-20.6
Switzerland	25,758	28,702	31,797	3,094	10.8
United Kingdom	441,275	454,659	487,714	33,055	7.3
USA	18,027	19,502	22,402	2,899	14.9
Other	190,368	222,457	266,395	43,939	19.8
Total nights	11,859,521	12,890,268	13,522,112	631,844	4.9
Austria	147,309	200,768	200,997	230	0.1
Belgium	196,293	224,399	230,309	5,909	2.6
France	813,240	890,573	982,021	91,448	10.3
Germany	1,200,873	1,255,420	1,210,790	-44,630	-3.6
Ireland	217,901	241,849	248,036	6,187	-
Italy	1,200,524	1,375,812	1,596,151	220,340	16.0
Libya	114,715	204,958	215,905	10,948	5.3
Netherlands	321,426	339,891	348,194	8,303	2.4
Russia	445,322	490,753	427,504	-63,249	-12.9
Scandinavia*	758,235	818,007	817,693	-314	0.0
Spain	464,737	409,160	321,464	-87,696	-21.4
Switzerland	231,130	258,647	262,365	3,717	1.4
United Kingdom	3,891,640	4,043,639	4,122,976	79,336	2.0
USA	137,719	158,890	178,434	19,544	12.3
Other	1,718,457	1,977,502	2,359,273	381,772	19.3
Total expenditure (€000)	1,326,474	1,440,379	1,528,765	88,386	6.1
Austria	19,055	25,562	26,117	555	2.2
Belgium	25,799	27,902	31,333	3,431	12.3
France	96,771	106,502	113,593	7,091	6.7
Germany	136,130	141,095	138,939	-2,156	-1.5
Ireland	24,437	27,743	27,024	-719	-
Italy	131,293	145,299	163,204	17,905	12.3
Libya	21,697	35,997	32,606	-3,391	-9.4
Netherlands	35,517	38,258	39,457	1,199	3.1
Russia	57,019	63,519	53,019	-10,500	-16.5
Scandinavia*	91,176	100,443	102,838	2,395	2.4
Spain	47,382	42,893	35,751	-7,143	-16.7
Switzerland	32,468	36,277	38,996	2,720	7.5
United Kingdom	369,579	386,196	422,453	36,257	9.4
USA	21,599	25,873	28,560	2,687	10.4
Other	216,553	236,820	274,876	38,056	16.1

* Denmark, Finland, Norway and Sweden

Note: Estimates for expenditure are rounded to the nearest thousand.

Table 11. Total expenditure by inbound tourists

€000

	Package expenditure	Non-package expenditure		Other expenditure	Total
		Air/sea fares	Accommodation		
		January-December 2014			
Total	516,339	217,255	208,216	586,956	1,528,765
Austria	11,403	2,749	2,896	9,068	26,117
Belgium	13,822	3,290	3,694	10,526	31,333
France	50,282	12,405	14,529	36,377	113,593
Germany	69,466	12,461	14,279	42,732	138,939
Ireland	6,934	3,861	4,252	11,977	27,024
Italy	43,962	21,564	28,680	68,998	163,204
Libya	2,413	8,452	6,134	15,606	32,606
Netherlands	14,753	4,668	4,568	15,468	39,457
Russia	16,661	6,750	6,507	23,100	53,019
Scandinavia*	32,255	14,612	15,219	40,751	102,838
Spain	10,608	4,403	5,739	15,000	35,751
Switzerland	16,294	4,679	4,945	13,078	38,996
United Kingdom	159,477	54,110	48,777	160,089	422,453
USA	4,474	8,702	5,689	9,695	28,560
Other	63,534	54,546	42,305	114,492	274,876
January-December 2013					
Total	486,168	211,058	185,982	557,172	1,440,379
Austria	11,788	2,831	3,065	7,879	25,562
Belgium	12,892	3,224	2,864	8,922	27,902
France	47,007	11,919	12,848	34,728	106,502
Germany	70,450	14,225	13,924	42,497	141,095
Ireland	6,936	3,829	4,535	12,443	27,743
Italy	38,729	19,254	26,249	61,068	145,299
Libya	4,696	8,718	5,463	17,119	35,997
Netherlands	16,074	3,698	3,723	14,763	38,258
Russia	18,984	8,493	7,869	28,172	63,519
Scandinavia*	30,426	14,329	14,890	40,798	100,443
Spain	12,332	4,814	6,404	19,344	42,893
Switzerland	14,562	4,519	3,865	13,330	36,277
United Kingdom	143,005	51,393	42,398	149,400	386,196
USA	3,208	9,474	4,594	8,597	25,873
Other	55,080	50,337	33,291	98,112	236,820
January-December 2012					
Total	457,154	197,544	160,329	511,444	1,326,474
Austria	8,421	2,167	1,719	6,748	19,055
Belgium	12,783	2,848	2,192	7,977	25,799
France	43,384	10,693	11,455	31,238	96,771
Germany	66,351	14,069	12,691	43,019	136,130
Ireland	4,892	4,292	4,193	11,060	24,437
Italy	38,793	16,375	21,198	54,927	131,293
Libya	1,921	5,604	3,517	10,655	21,697
Netherlands	14,444	3,506	3,400	14,166	35,517
Russia	18,457	6,700	5,941	25,921	57,019
Scandinavia*	29,487	13,071	12,900	35,717	91,176
Spain	10,852	5,805	8,835	21,890	47,382
Switzerland	13,040	4,066	3,180	12,182	32,468
United Kingdom	138,026	50,916	40,652	139,985	369,578
USA	3,960	7,242	3,190	7,206	21,599
Other	52,343	50,188	25,268	88,754	216,553

* Denmark, Finland, Norway and Sweden

Note: Estimates for expenditure are rounded to the nearest thousand.

Table 12. Per capita expenditure by inbound tourists

€

	Package expenditure	Non-package expenditure		Other Expenditure	Total
		Air/sea fares	Accommodation		
		January-December 2014			
Total	665	238	300	347	905
Austria	663	265	342	329	947
Belgium	796	234	344	335	998
France	731	219	304	290	905
Germany	730	260	378	299	971
Ireland	552	213	296	390	880
Italy	464	128	213	263	621
Libya	572	318	262	507	1,060
Netherlands	653	211	269	346	883
Russia	1,076	360	402	675	1,549
Scandinavia*	665	243	306	375	947
Spain	606	178	271	355	845
Switzerland	944	322	416	411	1,226
United Kingdom	660	220	312	328	866
USA	880	502	432	433	1,275
Other	647	324	321	430	1,032
January-December 2013					
Total	660	250	287	352	910
Austria	723	300	379	306	993
Belgium	776	261	301	308	964
France	736	226	286	298	914
Germany	738	275	333	289	959
Ireland	565	213	307	412	918
Italy	467	128	207	261	622
Libya	559	332	233	494	1,040
Netherlands	644	224	279	356	922
Russia	1,010	400	417	703	1,586
Scandinavia*	642	249	311	388	956
Spain	569	152	246	363	805
Switzerland	906	358	381	464	1,264
United Kingdom	638	223	300	329	849
USA	897	595	389	441	1,327
Other	652	365	303	441	1,065
January-December 2012					
Total	670	260	287	354	919
Austria	687	286	291	340	961
Belgium	754	276	298	292	946
France	741	217	289	290	897
Germany	744	291	327	313	990
Ireland	562	226	279	399	881
Italy	502	131	208	272	649
Libya	569	405	321	619	1,260
Netherlands	633	214	289	361	906
Russia	1,088	459	507	821	1,807
Scandinavia*	693	238	290	367	936
Spain	540	145	267	363	787
Switzerland	895	364	365	473	1,260
United Kingdom	642	225	292	317	838
USA	1,004	514	324	400	1,198
Other	652	456	311	466	1,138

* Denmark, Finland, Norway and Sweden

Table 13. Profile of overnight cruise passengers

	January-December			Change
	2012	2013	2014	2014/2013
	Total Overnight Cruise Passengers	12,201	8,838	24,724
Sex:				
Males	5,564	3,978	11,852	7,874
Females	6,637	4,860	12,872	8,012
Age group:				
0-19	189	336	1,434	1,098
20-39	392	955	3,568	2,613
40-59	2,156	1,949	8,559	6,610
60-79	8,009	4,834	9,584	4,750
80+	1,455	764	1,579	815
Markets:				
EU	7,374	5,947	22,344	16,397
<i>of which: Euro area</i>	2,436	3,823	18,976	15,153
Non-EU	4,827	2,891	2,380	-511

Methodological Notes

1. The results in this release are based on the ongoing frontier survey known as TOURSTAT. All the detailed distribution is survey-based. Tourist air departures are collected through a continuous survey carried out at the departure lounge of Malta International Airport (MIA). A two-stage sample design is used for this survey. In the first stage alternate days are selected. Then within each shift a sample of passengers is selected systematically. Personal interviews are carried out.
2. Administrative records are used as a supplementary source for the calibration of the survey aggregates. The exercise is mainly a bottom-up approach including a calibrating weight to re-align the survey results to the true population of total passenger departures (net of transits).
3. Tourist sea departures are collected through a regular survey carried out at the Valletta Cruise Port. Survey data is supplemented by administrative data provided by ferry operators.
4. Under-represented figures are indicated for each table and should be treated with caution. NSO advises users to exercise caution when analysing estimates of less than 1,500 tourists since such estimates are subject to variations attributable to low frequency in the sampling frame (sampling errors). There are also limitations related to non-sampling errors, namely those linked to respondents' likelihood and willingness to provide proper information and those related to language barriers.
5. Absolute changes between one survey and another must be treated with caution since minor changes (ie, less than 1,500 persons) might be the result of sampling error. Consequently, the percentage change for minor year-on-year shifts (less than 1,500 persons) are not presented so as not to give a misleading picture of the numbers involved.
6. The main variables collected in these surveys include the following:

Nationality	Number of nights stayed
Country of residence	Type of accommodation used
Flight/Sailing	Locality in Malta stayed longest
Final destination	Organisation of trip
Sex and age	Form of transport used
Purpose of visit	Expenditure (package/non-package/other)
Frequency of visit	

7. The expenditure data contained in this release should not be equated to national tourism earnings. Such expenditure includes elements that are earned by enterprises outside the Maltese economic territory.
8. The monthly passenger departures data published by the Malta International Airport cannot be equated to departing tourists because the former is inclusive of departing Maltese and transit passengers.
9. **Definitions:**

Usual environment of a person consists of the direct vicinity of his/her home and place of work or study, and other places frequently visited.

Visitors comprise tourists and same-day visitors. Visitors are distinguished from other travellers according to the following criteria:

- the trip should be to a place other than that of the usual environment;
- the stay in the place visited should not last more than 12 consecutive months;
- the main purpose of visit should be other than the exercise of an activity remunerated from within the place visited.

International tourist satisfies the criteria mentioned earlier regarding visitors. Additionally, international tourists must stay at least one night in a collective or private accommodation in the country visited.

International same-day visitor is an international visitor who does not spend at least one night in collective or private accommodation.

10. Data on cruise passengers who spent at least one night berthed on board their cruiseship are compiled on the basis of administrative records held by Transport Malta. These data are found in Tables 6 and 13.
11. Arrivals and nights spent in time-share accommodation are being categorised in 'Private Accommodation' instead of 'Collective Accommodation' as per Eurostat recommendation. In this regard, one should note that there might be minor differences in these statistics and statistics published in tourism supply due to the fact that hotels report time-share under 'Collective Accommodation'.
12. Figures may not add up due to rounding.
13. More information relating to this news release may be accessed at:

Statistical Concepts: <http://nso.gov.mt/metadata/concepts.aspx>

Metadata: <http://nso.gov.mt/metadata/reports.aspx?id=37>