

5 March 2015 | 1100 hrs | 044/2015

In October 2014, registered full-time employment increased by 3.8 per cent when compared to October 2013.

## Gainfully Occupied Population: October 2014

Administrative data provided by the ETC show that over a period of one year, the labour supply (excluding part-timers) increased by 3.1 per cent, reaching 172,014. This was mainly attributed to an increase in the full-time gainfully occupied population (6,093) and a drop in registered unemployment (998) (Table 1).

### Registered full-time employment

In October 2014, administrative and support service activities (NACE 77-82) and the professional, scientific and technical activities (NACE 69-75) contributed mostly to the increase in employment, compared to 2013 (Table 1). Registered full-time employment in the private sector went up by 3,798 persons to 120,867. Public sector full-time employment increased by 2,295 persons and reached 44,551 (Table 2).

The number of persons registered as full-time self-employed rose by 411 when compared to October 2013, while the number of persons registered as employees increased by 5,682. Full-time employment for males and females went up by 2.9 per cent and 5.6 per cent respectively over 2013 (Table 2) ■

#### Note on registered part-time employment

The Employment and Training Corporation is undertaking checks and updates on its employment databases. This exercise is affecting registered part-time employment. In view of this, figures on part-time employment in this release are being published only for October 2014. No comparative figures for past months are being provided. Users are therefore advised that all part-time employment data in this release are not comparable to counterpart data included in previous releases. This situation will prevail for the duration of the updating exercise. Annual averages are still provided, but users should note that there is a break in series and these figures should not be compared with the monthly data provided.

Compiled by:

**Unit C2: Labour Market Statistics**

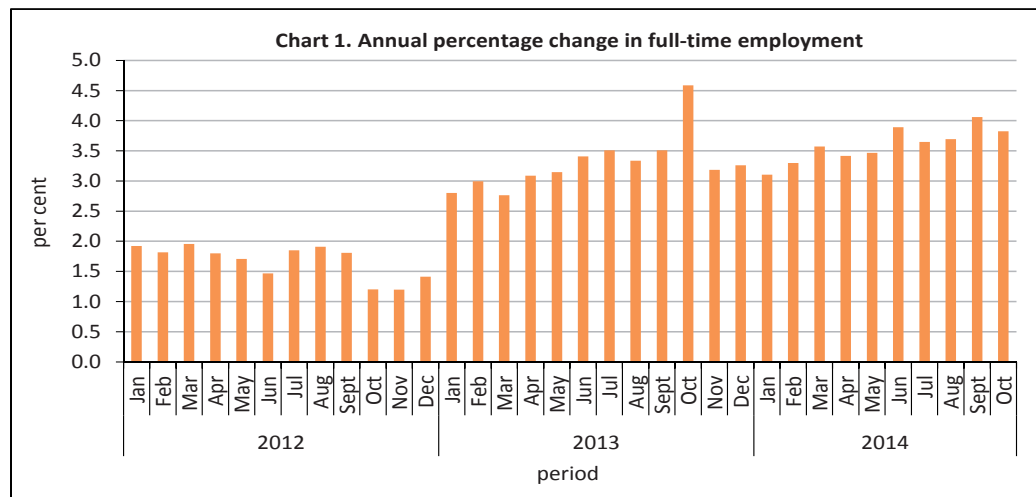
**Directorate C: Social Statistics**

Further information on data:

**Ms Joslyn MAGRO  
CUSCHIERI**

T. +356 2599 7662

E. joslyn.magro@gov.mt



Kindly indicate source when quoting from this release.

The advance release calendar may be consulted at [www.nso.gov.mt](http://www.nso.gov.mt)

Issued by: **External Cooperation and Communication Unit, National Statistics Office, Lascaris, Valletta VLT 2000, Malta.**  
T. +356 2599 7219 F. +356 2599 7205 E. nso@gov.mt

Table 1. Full-time employment classified by period and economic activity ...

NACE division	Economic activity	Average 2012	Average 2013 (Revised)	September 2013	September 2014	October 2013 (Revised)	October 2014
<b>01-03</b>	<b>Agriculture, forestry and fishing</b>	<b>2,084</b>	<b>2,073</b>	<b>2,078</b>	<b>2,056</b>	<b>2,054</b>	<b>2,041</b>
01	Crop and animal production, hunting and related service activities	1,588	1,551	1,542	1,522	1,524	1,511
02	Forestry and logging	-	-	-	-	-	-
03	Fishing and aquaculture	496	522	536	534	530	530
<b>05-09</b>	<b>Mining and quarrying</b>	<b>291</b>	<b>293</b>	<b>293</b>	<b>340</b>	<b>301</b>	<b>342</b>
05	Mining of coal and lignite	-	-	-	-	-	-
06	Extraction of crude petroleum and natural gas	-	-	-	-	-	-
07	Mining of metal ores	-	-	-	-	-	-
08	Other mining and quarrying	194	183	180	176	182	177
09	Mining support service activities	97	110	113	164	119	165
<b>10-33</b>	<b>Manufacturing</b>	<b>20,067</b>	<b>20,226</b>	<b>20,248</b>	<b>20,342</b>	<b>20,292</b>	<b>20,374</b>
10	Manufacture of food products	2,386	2,453	2,447	2,487	2,470	2,508
11	Manufacture of beverages	786	820	839	849	835	840
12	Manufacture of tobacco products	15	15	15	14	15	15
13	Manufacture of textiles	450	390	372	334	374	326
14	Manufacture of wearing apparel	429	390	361	345	375	320
15	Manufacture of leather and related products	32	31	32	30	32	31
16	Manufacture of wood and of products of wood and cork, except furniture; manufacture of articles of straw and plaiting materials	262	272	287	312	286	311
17	Manufacture of paper and paper products	235	220	209	201	212	202
18	Printing and reproduction of recorded media	1,404	1,422	1,407	1,402	1,420	1,411
19	Manufacture of coke and refined petroleum products	5	6	6	8	6	8
20	Manufacture of chemicals and chemical products	270	261	260	270	258	276
21	preparations	1,160	1,205	1,193	1,097	1,186	1,095
22	Manufacture of rubber and plastic products	1,615	1,688	1,719	1,644	1,710	1,628
23	Manufacture of other non-metallic mineral products	1,140	1,147	1,161	1,102	1,154	1,107
24	Manufacture of basic metals	87	75	69	95	68	95
25	Manufacture of fabricated metal products, except machinery and equipment	1,238	1,226	1,263	1,192	1,255	1,197
26	Manufacture of computer, electronic and optical products	2,191	2,201	2,202	2,217	2,201	2,257
27	Manufacture of electrical equipment	450	475	480	496	486	501
28	Manufacture of machinery and equipment n.e.c.	451	424	421	429	417	424
29	Manufacture of motor vehicles, trailers and semi-trailers	1,015	1,084	1,115	1,066	1,131	1,081
30	Manufacture of other transport equipment	40	41	39	66	40	69
31	Manufacture of furniture	1,198	1,145	1,124	1,115	1,116	1,115
32	Other manufacturing	1,927	1,934	1,910	2,169	1,914	2,163

... Table 1. Full-time employment classified by period and economic activity

NACE division	Economic activity	Average 2012	Average 2013 (Revised)	September 2013	September 2014	October 2013 (Revised)	October 2014
33	Repair and installation of machinery and equipment	1,281	1,301	1,317	1,402	1,331	1,394
<b>35</b>	<b>Electricity, gas, steam and air conditioning supply</b>	<b>1,567</b>	<b>1,539</b>	<b>1,538</b>	<b>1,500</b>	<b>1,539</b>	<b>1,497</b>
<b>36-39</b>	<b>Water supply; sewerage, waste management and remediation activities</b>	<b>1,469</b>	<b>1,424</b>	<b>1,409</b>	<b>1,499</b>	<b>1,407</b>	<b>1,459</b>
36	Water collection, treatment and supply	1,032	980	966	1,048	966	1,009
37	Sewerage	13	13	13	12	13	12
38	Waste collection, treatment and disposal activities; materials recovery	417	419	416	421	417	422
39	Remediation activities and other waste management services	7	12	14	18	11	16
<b>41-43</b>	<b>Construction</b>	<b>12,175</b>	<b>.<sup>b</sup></b>	<b>9,244</b>	<b>9,327</b>	<b>9,250</b>	<b>9,375</b>
41	Construction of buildings	6,537	. <sup>b</sup>	3,449	3,322	3,445	3,350
42	Civil engineering	746	. <sup>b</sup>	681	681	668	684
43	Specialised construction activities	4,892	. <sup>b</sup>	5,114	5,324	5,137	5,341
<b>45-47</b>	<b>Wholesale and retail trade; repair of motor vehicles and motorcycles</b>	<b>23,063</b>	<b>23,333</b>	<b>23,271</b>	<b>23,799</b>	<b>23,344</b>	<b>23,829</b>
45	Wholesale and retail trade and repair of motor vehicles and motorcycles	2,154	2,193	2,166	2,206	2,197	2,216
46	Wholesale trade, except of motor vehicles and motorcycles	8,940	8,720	8,551	8,860	8,572	8,887
47	Retail trade, except of motor vehicles and motorcycles	11,969	12,420	12,554	12,733	12,575	12,726
<b>49-53</b>	<b>Transportation and storage</b>	<b>9,049</b>	<b>9,059</b>	<b>9,167</b>	<b>9,284</b>	<b>9,082</b>	<b>9,225</b>
49	Land transport and transport via pipelines	3,111	3,037	3,045	3,016	3,027	3,002
50	Water transport	470	459	454	470	449	468
51	Air transport	1,221	1,187	1,233	1,294	1,171	1,264
52	Warehousing and support activities for transportation	3,638	3,764	3,816	3,875	3,818	3,862
53	Postal and courier activities	609	612	619	629	617	629
<b>55-56</b>	<b>Accommodation and food service activities</b>	<b>9,800</b>	<b>9,942</b>	<b>10,267</b>	<b>10,491</b>	<b>10,154</b>	<b>10,368</b>
55	Accommodation	5,299	5,451	5,737	5,693	5,675	5,632
56	Food and beverage service activities	4,501	4,491	4,530	4,798	4,479	4,736
<b>58-63</b>	<b>Information and communication</b>	<b>5,010</b>	<b>5,446</b>	<b>5,529</b>	<b>6,096</b>	<b>5,531</b>	<b>6,124</b>
58	Publishing activities	470	506	552	541	539	545
59	Motion picture, video and television programme production, sound recording and music publishing activities	281	266	251	357	248	340
60	Programming and broadcasting activities	511	465	429	479	450	487
61	Telecommunications	1,381	1,365	1,351	1,359	1,343	1,352
62	Computer programming, consultancy and related activities	1,939	2,367	2,468	2,817	2,464	2,808
63	Information service activities	428	477	478	543	487	592
<b>64-66</b>	<b>Financial and insurance activities</b>	<b>7,050</b>	<b>7,533</b>	<b>7,808</b>	<b>8,175</b>	<b>7,817</b>	<b>8,165</b>
64	Financial service activities, except insurance and pension funding	4,929	5,295	5,551	5,905	5,533	5,890
65	Insurance, reinsurance and pension funding, except compulsory social security	608	644	664	691	668	694

... Table 1. Full-time employment classified by period and economic activity

NACE division	Economic activity	Average 2012	Average 2013 (Revised)	September 2013	September 2014	October 2013 (Revised)	October 2014
66	Activities auxiliary to financial services and insurance activities	1,513	1,594	1,593	1,579	1,616	1,581
<b>68</b>	<b>Real estate activities</b>	<b>983</b>	<b>1,033</b>	<b>1,037</b>	<b>1,121</b>	<b>1,034</b>	<b>1,118</b>
<b>69-75</b>	<b>Professional, scientific and technical activities</b>	<b>7,726</b>	<b>8,098</b>	<b>7,884</b>	<b>8,582</b>	<b>7,973</b>	<b>8,682</b>
69	Legal and accounting activities	2,393	2,552	2,628	2,867	2,635	2,896
70	Activities of head offices; management consultancy activities	2,578	2,436	2,033	2,200	2,046	2,200
71	Architectural and engineering activities; technical testing and analysis	1,387	1,503	1,558	1,657	1,600	1,693
72	Scientific research and development	42	37	33	23	31	25
73	Advertising and market research	869	999	1,038	1,217	1,052	1,230
74	Other professional, scientific and technical activities	413	519	544	558	557	579
75	Veterinary activities	44	52	50	60	52	59
<b>77-82</b>	<b>Administrative and support service activities</b>	<b>7,907</b>	<b>9,165</b>	<b>9,579</b>	<b>10,626</b>	<b>9,668</b>	<b>10,573</b>
77	Rental and leasing activities	1,026	1,062	1,081	1,144	1,085	1,151
78	Employment activities	1,388	1,640	1,803	1,886	1,786	1,882
79	Travel agency, tour operator and other reservation service and related activities	1,070	1,137	1,160	1,211	1,159	1,198
80	Security and investigation activities	1,410	1,458	1,499	1,500	1,482	1,565
81	Services to buildings and landscape activities	1,370	1,796	1,837	2,320	1,966	2,259
82	Office administrative, office support and other business support activities	1,643	2,072	2,199	2,565	2,190	2,518
<b>84</b>	<b>Public administration and defence; compulsory social security</b>	<b>10,508</b>	<b>10,508</b>	<b>13,583</b>	<b>14,177</b>	<b>13,710</b>	<b>14,282</b>
<b>85</b>	<b>Education</b>	<b>13,906</b>	<b>14,938</b>	<b>14,975</b>	<b>15,563</b>	<b>15,147</b>	<b>15,655</b>
<b>86-88</b>	<b>Human health and social work activities</b>	<b>12,471</b>	<b>13,087</b>	<b>13,165</b>	<b>13,919</b>	<b>13,320</b>	<b>14,001</b>
86	Human health activities	7,799	8,235	8,272	8,851	8,407	8,900
87	Residential care activities	3,415	3,555	3,618	3,690	3,628	3,706
88	Social work activities without accommodation	1,257	1,297	1,275	1,378	1,285	1,395
<b>90-93</b>	<b>Arts, entertainment and recreation</b>	<b>3,917</b>	<b>4,277</b>	<b>4,289</b>	<b>4,693</b>	<b>4,331</b>	<b>4,724</b>
90	Creative, arts and entertainment activities	380	394	383	406	390	397
91	Libraries, archives, museums and other cultural activities	432	434	421	417	427	426
92	Gambling and betting activities	2,416	2,752	2,861	3,217	2,898	3,248
93	Sports activities and amusement and recreation activities	689	697	624	653	616	653
<b>94-96</b>	<b>Other service activities</b>	<b>3,076</b>	<b>3,128</b>	<b>3,149</b>	<b>3,347</b>	<b>3,159</b>	<b>3,356</b>
94	Activities of membership organisations	597	639	648	689	657	705
95	Repair of computers and personal and household goods	226	246	254	286	261	274
96	Other personal service activities	2,253	2,243	2,247	2,372	2,241	2,377
<b>97-98</b>	<b>Activities of households as employers; undifferentiated goods- and services-producing activities of households for own use</b>	<b>3</b>	<b>4</b>	<b>6</b>	<b>18</b>	<b>6</b>	<b>16</b>
97	Activities of households as employers of domestic personnel	3	4	6	18	6	16

... Table 1. Full-time employment classified by period and economic activity

NACE division	Economic activity	Average 2012	Average 2013 (Revised)	September 2013	September 2014	October 2013 (Revised)	October 2014
98	Undifferentiated goods- and services-producing activities of private households for own use	-	-	-	-	-	-
99	Activities of extraterritorial organisations and bodies	184	192	201	211	206	212
01-99	<b>Total Gainfully Occupied (including apprentices)</b>	<b>152,306</b>	<b>157,551</b>	<b>158,720</b>	<b>165,166</b>	<b>159,325</b>	<b>165,418</b>
	<b>Registered Unemployed</b>	<b>6,839</b>	<b>7,382</b>	<b>7,619</b>	<b>6,599</b>	<b>7,594</b>	<b>6,596</b>
	Part I	6,169	6,884	7,092	6,120	7,078	6,104
	Part II	670	498	527	479	516	492
	<b>Labour Supply</b>	<b>159,145</b>	<b>164,933</b>	<b>166,339</b>	<b>171,765</b>	<b>166,919</b>	<b>172,014</b>

<sup>b</sup> Break in series. Annual averages in respect of NACE 41-43 and NACE 84 are not being published due to a change in the compilation of figures during the reference year (see methodological note 7)

Table 2. Full-time employment classified by period, economic activity and category ...

NACE division	Economic activity	Category	Average 2012	Average 2013 (Revised)	September 2013	September 2014	October 2013 (Revised)	October 2014
01-03	Agriculture, forestry and fishing	Private Sector	1,921	1,901	1,903	1,880	1,880	1,866
		Public Sector	163	172	175	176	174	175
		Males	1,895	1,883	1,896	1,869	1,875	1,857
		Females	189	190	182	187	179	184
		Self-employed	1,486	1,476	1,473	1,456	1,465	1,445
		Employees	598	597	605	600	589	596
		Malta	1,616	1,604	1,609	1,578	1,587	1,566
		Gozo	468	469	469	478	467	475
		<b>Total</b>	<b>2,084</b>	<b>2,073</b>	<b>2,078</b>	<b>2,056</b>	<b>2,054</b>	<b>2,041</b>
05-09	Mining and quarrying	Private Sector	291	293	293	340	301	342
		Public Sector	-	-	-	-	-	-
		Males	271	271	272	314	281	314
		Females	20	22	21	26	20	28
		Self-employed	61	66	69	77	72	80
		Employees	230	227	224	263	229	262
		Malta	246	251	251	304	259	306
		Gozo	45	42	42	36	42	36
		<b>Total</b>	<b>291</b>	<b>293</b>	<b>293</b>	<b>340</b>	<b>301</b>	<b>342</b>
10-33	Manufacturing	Private Sector	20,002	20,172	20,194	20,288	20,236	20,320
		Public Sector	65	54	54	54	56	54
		Males	15,025	15,112	15,159	15,217	15,194	15,257
		Females	5,042	5,114	5,089	5,125	5,098	5,117
		Self-employed	1,383	1,386	1,387	1,405	1,390	1,405
		Employees	18,684	18,840	18,861	18,937	18,902	18,969
		Malta	19,156	19,325	19,337	19,388	19,395	19,426
		Gozo	911	901	911	954	897	948
		<b>Total</b>	<b>20,067</b>	<b>20,226</b>	<b>20,248</b>	<b>20,342</b>	<b>20,292</b>	<b>20,374</b>
35	Electricity, gas, steam and air conditioning supply	Private Sector	7	13	13	17	15	17
		Public Sector	1,560	1,526	1,525	1,483	1,524	1,480
		Males	1,408	1,384	1,383	1,349	1,384	1,348
		Females	159	155	155	151	155	149
		Self-employed	3	5	5	6	6	6
		Employees	1,564	1,534	1,533	1,494	1,533	1,491
		Malta	1,521	1,489	1,486	1,449	1,487	1,446
		Gozo	46	50	52	51	52	51
		<b>Total</b>	<b>1,567</b>	<b>1,539</b>	<b>1,538</b>	<b>1,500</b>	<b>1,539</b>	<b>1,497</b>

... Table 2. Full-time employment classified by period, economic activity and category

NACE division	Economic activity	Category	Average 2012	Average 2013 (Revised)	September 2013	September 2014	October 2013 (Revised)	October 2014
36-39	Water supply; sewerage, waste management and remediation activities	Private Sector	332	339	340	355	337	354
		Public Sector	1,137	1,085	1,069	1,144	1,070	1,105
		Males	1,296	1,262	1,247	1,340	1,246	1,305
		Females	173	162	162	159	161	154
		Self-employed	63	76	76	77	77	78
		Employees	1,406	1,348	1,333	1,422	1,330	1,381
		Malta	1,301	1,263	1,250	1,347	1,246	1,307
		Gozo	168	161	159	152	161	152
		<b>Total</b>	<b>1,469</b>	<b>1,424</b>	<b>1,409</b>	<b>1,499</b>	<b>1,407</b>	<b>1,459</b>
41-43	Construction	Private Sector	8,724	: <sup>b</sup>	8,857	9,028	8,861	9,077
		Public Sector	3,451	: <sup>b</sup>	387	299	389	298
		Males	11,480	: <sup>b</sup>	8,855	8,890	8,861	8,932
		Females	695	: <sup>b</sup>	389	437	389	443
		Self-employed	2,655	: <sup>b</sup>	2,726	2,757	2,711	2,730
		Employees	9,520	: <sup>b</sup>	6,518	6,570	6,539	6,645
		Malta	11,248	: <sup>b</sup>	8,303	8,383	8,314	8,427
		Gozo	927	: <sup>b</sup>	941	944	936	948
		<b>Total</b>	<b>12,175</b>	: <sup>b</sup>	<b>9,244</b>	<b>9,327</b>	<b>9,250</b>	<b>9,375</b>
45-47	Wholesale and retail trade; repair of motor vehicles and motorcycles	Private Sector	23,063	23,333	23,271	23,799	23,344	23,829
		Public Sector	-	-	-	-	-	-
		Males	15,736	15,796	15,730	15,976	15,750	16,013
		Females	7,327	7,537	7,541	7,823	7,594	7,816
		Self-employed	5,323	5,340	5,339	5,359	5,314	5,352
		Employees	17,740	17,993	17,932	18,440	18,030	18,477
		Malta	21,738	22,064	22,037	22,504	22,122	22,528
		Gozo	1,325	1,269	1,234	1,295	1,222	1,301
		<b>Total</b>	<b>23,063</b>	<b>23,333</b>	<b>23,271</b>	<b>23,799</b>	<b>23,344</b>	<b>23,829</b>
49-53	Transportation and storage	Private Sector	7,024	7,086	7,159	6,433	7,131	6,417
		Public Sector	2,025	1,973	2,008	2,851	1,951	2,808
		Males	7,561	7,537	7,611	7,664	7,563	7,628
		Females	1,488	1,522	1,556	1,620	1,519	1,597
		Self-employed	979	950	953	956	953	954
		Employees	8,070	8,109	8,214	8,328	8,129	8,271
		Malta	8,579	8,601	8,718	8,817	8,635	8,755
		Gozo	470	458	449	467	447	470
		<b>Total</b>	<b>9,049</b>	<b>9,059</b>	<b>9,167</b>	<b>9,284</b>	<b>9,082</b>	<b>9,225</b>

... Table 2. Full-time employment classified by period, economic activity and category

NACE division	Economic activity	Category	Average 2012	Average 2013 (Revised)	September 2013	September 2014	October 2013 (Revised)	October 2014
55-56	Accommodation and food service activities	Private Sector	9,800	9,942	10,267	10,491	10,154	10,368
		Public Sector	-	-	-	-	-	-
		Males	6,807	6,863	7,060	7,138	6,991	7,069
		Females	2,993	3,079	3,207	3,353	3,163	3,299
		Self-employed	1,139	1,171	1,174	1,206	1,168	1,199
		Employees	8,661	8,771	9,093	9,285	8,986	9,169
		Malta	9,100	9,218	9,502	9,666	9,420	9,564
		Gozo	700	724	765	825	734	804
		<b>Total</b>	<b>9,800</b>	<b>9,942</b>	<b>10,267</b>	<b>10,491</b>	<b>10,154</b>	<b>10,368</b>
58-63	Information and communication	Private Sector	4,548	4,942	5,034	5,572	5,031	5,566
		Public Sector	462	504	495	524	500	558
		Males	3,608	3,921	3,988	4,379	3,985	4,376
		Females	1,402	1,525	1,541	1,717	1,546	1,748
		Self-employed	212	246	252	287	257	287
		Employees	4,798	5,200	5,277	5,809	5,274	5,837
		Malta	4,836	5,255	5,326	5,827	5,330	5,858
		Gozo	174	191	203	269	201	266
		<b>Total</b>	<b>5,010</b>	<b>5,446</b>	<b>5,529</b>	<b>6,096</b>	<b>5,531</b>	<b>6,124</b>
64-66	Financial and insurance activities	Private Sector	6,400	6,857	7,131	7,450	7,136	7,445
		Public Sector	650	676	677	725	681	720
		Males	3,440	3,665	3,793	4,025	3,808	4,011
		Females	3,610	3,868	4,015	4,150	4,009	4,154
		Self-employed	77	86	88	99	91	98
		Employees	6,973	7,447	7,720	8,076	7,726	8,067
		Malta	6,765	7,233	7,503	7,862	7,510	7,850
		Gozo	285	300	305	313	307	315
		<b>Total</b>	<b>7,050</b>	<b>7,533</b>	<b>7,808</b>	<b>8,175</b>	<b>7,817</b>	<b>8,165</b>
68	Real estate activities	Private Sector	965	987	978	1,060	975	1,057
		Public Sector	18	46	59	61	59	61
		Males	662	678	680	735	678	730
		Females	321	355	357	386	356	388
		Self-employed	290	309	317	337	312	337
		Employees	693	724	720	784	722	781
		Malta	887	943	953	1,037	951	1,034
		Gozo	96	90	84	84	83	84
		<b>Total</b>	<b>983</b>	<b>1,033</b>	<b>1,037</b>	<b>1,121</b>	<b>1,034</b>	<b>1,118</b>



... Table 2. Full-time employment classified by period, economic activity and category

NACE division	Economic activity	Category	Average 2012	Average 2013 (Revised)	September 2013	September 2014	October 2013 (Revised)	October 2014
69-75	Professional, scientific and technical activities	Private Sector	7,638	8,040	7,844	8,525	7,932	8,623
		Public Sector	88	58	40	57	41	59
		Males	4,461	4,674	4,538	4,956	4,606	5,020
		Females	3,265	3,424	3,346	3,626	3,367	3,662
		Self-employed	1,124	1,183	1,198	1,299	1,193	1,300
		Employees	6,602	6,915	6,686	7,283	6,780	7,382
		Malta	7,480	7,825	7,602	8,276	7,688	8,376
		Gozo	246	273	282	306	285	306
		<b>Total</b>	<b>7,726</b>	<b>8,098</b>	<b>7,884</b>	<b>8,582</b>	<b>7,973</b>	<b>8,682</b>
		77-82	Administrative and support service activities	Private Sector	7,064	8,310	8,696	9,685
Public Sector	843			855	883	941	870	936
Males	5,000			5,593	5,809	6,302	5,814	6,294
Females	2,907			3,572	3,770	4,324	3,854	4,279
Self-employed	690			740	758	795	756	803
Employees	7,217			8,425	8,821	9,831	8,912	9,770
Malta	7,603			8,848	9,256	10,269	9,341	10,194
Gozo	304			317	323	357	327	379
<b>Total</b>	<b>7,907</b>			<b>9,165</b>	<b>9,579</b>	<b>10,626</b>	<b>9,668</b>	<b>10,573</b>
84	Public administration and defence; compulsory social security			Private Sector	-	. <sup>b</sup>	-	-
		Public Sector	10,508	. <sup>b</sup>	13,583	14,177	13,710	14,282
		Males	7,081	. <sup>b</sup>	9,740	10,052	9,829	10,107
		Females	3,427	. <sup>b</sup>	3,843	4,125	3,881	4,175
		Self-employed	-	. <sup>b</sup>	-	-	-	-
		Employees	10,508	. <sup>b</sup>	13,583	14,177	13,710	14,282
		Malta	9,703	. <sup>b</sup>	12,757	13,300	12,886	13,397
		Gozo	805	. <sup>b</sup>	826	877	824	885
		<b>Total</b>	<b>10,508</b>	<b>.<sup>b</sup></b>	<b>13,583</b>	<b>14,177</b>	<b>13,710</b>	<b>14,282</b>
		85	Education	Private Sector	4,141	4,472	4,576	4,723
Public Sector	9,765			10,466	10,399	10,840	10,565	10,950
Males	4,873			4,999	4,995	5,004	4,990	5,014
Females	9,033			9,939	9,980	10,559	10,157	10,641
Self-employed	308			317	315	308	313	308
Employees	13,598			14,621	14,660	15,255	14,834	15,347
Malta	12,892			13,792	13,700	14,321	13,869	14,411
Gozo	1,014			1,146	1,275	1,242	1,278	1,244
<b>Total</b>	<b>13,906</b>			<b>14,938</b>	<b>14,975</b>	<b>15,563</b>	<b>15,147</b>	<b>15,655</b>

... Table 2. Full-time employment classified by period, economic activity and category

NACE division	Economic activity	Category	Average 2012	Average 2013 (Revised)	September 2013	September 2014	October 2013 (Revised)	October 2014
86-88	Human health and social work activities	Private Sector	2,910	3,196	3,251	3,493	3,280	3,546
		Public Sector	9,561	9,891	9,914	10,426	10,040	10,455
		Males	5,015	5,148	5,177	5,376	5,212	5,392
		Females	7,456	7,939	7,988	8,543	8,108	8,609
		Self-employed	280	304	311	329	312	327
		Employees	12,191	12,783	12,854	13,590	13,008	13,674
		Malta	11,563	12,142	12,218	12,904	12,373	12,984
		Gozo	908	945	947	1,015	947	1,017
		<b>Total</b>	<b>12,471</b>	<b>13,087</b>	<b>13,165</b>	<b>13,919</b>	<b>13,320</b>	<b>14,001</b>
90-93	Arts, entertainment and recreation	Private Sector	3,328	3,661	3,682	4,105	3,719	4,129
		Public Sector	589	616	607	588	612	595
		Males	2,583	2,836	2,848	3,094	2,862	3,116
		Females	1,334	1,441	1,441	1,599	1,469	1,608
		Self-employed	355	412	421	430	432	423
		Employees	3,562	3,865	3,868	4,263	3,899	4,301
		Malta	3,743	4,087	4,130	4,513	4,165	4,543
		Gozo	174	190	159	180	166	181
		<b>Total</b>	<b>3,917</b>	<b>4,277</b>	<b>4,289</b>	<b>4,693</b>	<b>4,331</b>	<b>4,724</b>
94-96	Other service activities	Private Sector	3,068	3,113	3,134	3,332	3,145	3,341
		Public Sector	8	15	15	15	14	15
		Males	1,467	1,422	1,423	1,516	1,428	1,505
		Females	1,609	1,706	1,726	1,831	1,731	1,851
		Self-employed	1,462	1,415	1,415	1,519	1,419	1,517
		Employees	1,614	1,713	1,734	1,828	1,740	1,839
		Malta	2,951	2,997	3,019	3,188	3,023	3,200
		Gozo	125	131	130	159	136	156
		<b>Total</b>	<b>3,076</b>	<b>3,128</b>	<b>3,149</b>	<b>3,347</b>	<b>3,159</b>	<b>3,356</b>
97-98	Activities of households as employers; undifferentiated goods- and services-producing activities of households for own use	Private Sector	3	4	6	18	6	16
		Public Sector	-	-	-	-	-	-
		Males	1	1	2	7	2	6
		Females	2	3	4	11	4	10
		Self-employed	-	-	-	3	-	3
		Employees	3	4	6	15	6	13
		Malta	3	4	4	16	4	14
		Gozo	-	-	2	2	2	2
		<b>Total</b>	<b>3</b>	<b>4</b>	<b>6</b>	<b>18</b>	<b>6</b>	<b>16</b>

... Table 2. Full-time employment classified by period, economic activity and category

NACE division	Economic activity	Category	Average 2012	Average 2013 (Revised)	September 2013	September 2014	October 2013 (Revised)	October 2014
99	Activities of extraterritorial organisations and bodies	Private Sector	184	192	201	211	206	212
		Public Sector	-	-	-	-	-	-
		Males	121	127	134	141	138	141
		Females	63	65	67	70	68	71
		Self-employed	1	1	1	1	-	-
		Employees	183	191	200	210	206	212
		Malta	184	192	201	211	206	212
		Gozo	-	-	-	-	-	-
		<b>Total</b>	<b>184</b>	<b>192</b>	<b>201</b>	<b>211</b>	<b>206</b>	<b>212</b>
01-99	Total Gainfully Occupied (including apprentices)	Private Sector	111,413	115,631	116,830	120,805	117,069	120,867
		Public Sector	40,893	41,920	41,890	44,361	42,256	44,551
		Males	99,791	101,723	102,340	105,344	102,497	105,435
		Females	52,515	55,828	56,380	59,822	56,828	59,983
		Self-employed	17,891	18,190	18,278	18,706	18,241	18,652
		Employees	134,415	139,361	140,442	146,460	141,084	146,766
		Malta	143,115	148,155	149,162	155,160	149,811	155,398
		Gozo	9,191	9,396	9,558	10,006	9,514	10,020
		<b>Total</b>	<b>152,306</b>	<b>157,551</b>	<b>158,720</b>	<b>165,166</b>	<b>159,325</b>	<b>165,418</b>

:<sup>b</sup> Break in series. Annual averages in respect of NACE 41-43 and NACE 84 are not being published due to a change in the compilation of figures during the reference year (see methodological note 7)

**Table 3. Part-time employment classified by period and economic activity ...**

<b>NACE division</b>	<b>Economic activity</b>	<b>Average 2012</b>	<b>Average 2013 (Revised)</b>	<b>October 2014<sup>b</sup></b>
<b>01-03</b>	<b>Agriculture, forestry and fishing</b>	<b>2,354</b>	<b>2,312</b>	<b>2,266</b>
01	Crop and animal production, hunting and related service activities	1,652	1,639	1,597
02	Forestry and logging	-	-	-
03	Fishing and aquaculture	702	673	669
<b>05-09</b>	<b>Mining and quarrying</b>	<b>32</b>	<b>32</b>	<b>33</b>
05	Mining of coal and lignite	-	-	-
06	Extraction of crude petroleum and natural gas	-	-	2
07	Mining of metal ores	-	-	-
08	Other mining and quarrying	29	28	28
09	Mining support service activities	3	4	3
<b>10-33</b>	<b>Manufacturing</b>	<b>2,902</b>	<b>2,992</b>	<b>3,065</b>
10	Manufacture of food products	728	831	882
11	Manufacture of beverages	89	73	76
12	Manufacture of tobacco products	2	2	2
13	Manufacture of textiles	49	49	39
14	Manufacture of wearing apparel	113	103	104
15	Manufacture of leather and related products	13	13	10
16	Manufacture of wood and of products of wood and cork, except furniture; manufacture of articles of straw and plaiting materials	55	55	57
17	Manufacture of paper and paper products	24	25	19
18	Printing and reproduction of recorded media	200	206	177
19	Manufacture of coke and refined petroleum products	1	1	2
20	Manufacture of chemicals and chemical products	37	37	55
21	Manufacture of basic pharmaceutical products and pharmaceutical preparations	34	36	30
22	Manufacture of rubber and plastic products	118	128	118
23	Manufacture of other non-metallic mineral products	155	155	148
24	Manufacture of basic metals	36	29	38
25	Manufacture of fabricated metal products, except machinery and equipment	240	243	242
26	Manufacture of computer, electronic and optical products	72	70	82
27	Manufacture of electrical equipment	85	82	74
28	Manufacture of machinery and equipment n.e.c.	35	32	45
29	Manufacture of motor vehicles, trailers and semi-trailers	73	80	78
30	Manufacture of other transport equipment	13	19	32
31	Manufacture of furniture	370	384	346
32	Other manufacturing	231	203	258
33	Repair and installation of machinery and equipment	129	136	151
<b>35</b>	<b>Electricity, gas, steam and air conditioning supply</b>	<b>8</b>	<b>10</b>	<b>13</b>
<b>36-39</b>	<b>Water supply; sewerage, waste management and remediation activities</b>	<b>186</b>	<b>183</b>	<b>176</b>
36	Water collection, treatment and supply	15	21	24
37	Sewerage	3	3	3
38	Waste collection, treatment and disposal activities; materials recovery	159	152	143
39	Remediation activities and other waste management services	9	7	6

... Table 3. Part-time employment classified by period and economic activity

NACE division	Economic activity	Average 2012	Average 2013 (Revised)	October 2014 <sup>b</sup>
<b>41-43</b>	<b>Construction</b>	<b>1,665</b>	<b>1,655</b>	<b>1,599</b>
41	Construction of buildings	495	467	435
42	Civil engineering	63	60	70
43	Specialised construction activities	1,107	1,128	1,094
<b>45-47</b>	<b>Wholesale and retail trade; repair of motor vehicles and motorcycles</b>	<b>9,538</b>	<b>9,953</b>	<b>10,322</b>
45	Wholesale and retail trade and repair of motor vehicles and motorcycles	662	666	680
46	Wholesale trade, except of motor vehicles and motorcycles	2,552	2,421	2,413
47	Retail trade, except of motor vehicles and motorcycles	6,324	6,866	7,229
<b>49-53</b>	<b>Transportation and storage</b>	<b>2,032</b>	<b>2,136</b>	<b>2,280</b>
49	Land transport and transport via pipelines	1,117	1,132	1,162
50	Water transport	103	128	136
51	Air transport	161	206	279
52	Warehousing and support activities for transportation	447	455	488
53	Postal and courier activities	204	215	215
<b>55-56</b>	<b>Accommodation and food service activities</b>	<b>10,097</b>	<b>10,010</b>	<b>10,581</b>
55	Accommodation	3,488	3,512	3,720
56	Food and beverage service activities	6,609	6,498	6,861
<b>58-63</b>	<b>Information and communication</b>	<b>1,506</b>	<b>1,429</b>	<b>1,321</b>
58	Publishing activities	129	167	135
59	Motion picture, video and television programme production, sound recording and music publishing activities	379	341	255
60	Programming and broadcasting activities	428	317	278
61	Telecommunications	118	106	119
62	Computer programming, consultancy and related activities	421	463	496
63	Information service activities	31	35	38
<b>64-66</b>	<b>Financial and insurance activities</b>	<b>717</b>	<b>799</b>	<b>941</b>
64	Financial service activities, except insurance and pension funding	321	384	518
65	Insurance, reinsurance and pension funding, except compulsory social security	117	130	161
66	Activities auxiliary to financial services and insurance activities	279	285	262
<b>68</b>	<b>Real estate activities</b>	<b>597</b>	<b>619</b>	<b>612</b>
<b>69-75</b>	<b>Professional, scientific and technical activities</b>	<b>3,496</b>	<b>3,826</b>	<b>3,694</b>
69	Legal and accounting activities	829	840	851
70	Activities of head offices; management consultancy activities	1,222	1,526	1,362
71	Architectural and engineering activities; technical testing and analysis	472	493	563
72	Scientific research and development	18	22	22
73	Advertising and market research	667	606	507
74	Other professional, scientific and technical activities	267	312	371
75	Veterinary activities	21	27	18

... Table 3. Part-time employment classified by period and economic activity

NACE division	Economic activity	Average 2012	Average 2013 (Revised)	October 2014 <sup>b</sup>
<b>77-82</b>	<b>Administrative and support service activities</b>	<b>5,232</b>	<b>5,567</b>	<b>5,983</b>
77	Rental and leasing activities	527	566	565
78	Employment activities	1,467	1,579	1,431
79	Travel agency, tour operator and other reservation service and related activities	573	588	576
80	Security and investigation activities	920	1,056	1,317
81	Services to buildings and landscape activities	1,088	1,116	1,440
82	Office administrative, office support and other business support activities	657	662	654
<b>84</b>	<b>Public administration and defence; compulsory social security</b>	<b>1,804</b>	<b>2,095</b>	<b>2,522</b>
<b>85</b>	<b>Education</b>	<b>5,503</b>	<b>5,624</b>	<b>6,028</b>
<b>86-88</b>	<b>Human health and social work activities</b>	<b>2,948</b>	<b>3,241</b>	<b>3,558</b>
86	Human health activities	965	1,134	1,217
87	Residential care activities	1,377	1,493	1,669
88	Social work activities without accommodation	606	614	672
<b>90-93</b>	<b>Arts, entertainment and recreation</b>	<b>1,772</b>	<b>1,684</b>	<b>1,704</b>
90	Creative, arts and entertainment activities	532	498	454
91	Libraries, archives, museums and other cultural activities	124	114	104
92	Gambling and betting activities	267	314	382
93	Sports activities and amusement and recreation activities	849	758	764
<b>94-96</b>	<b>Other service activities</b>	<b>2,044</b>	<b>2,044</b>	<b>2,185</b>
94	Activities of membership organisations	472	523	551
95	Repair of computers and personal and household goods	151	159	160
96	Other personal service activities	1,421	1,362	1,474
<b>97-98</b>	<b>Activities of households as employers; undifferentiated goods- and services-producing activities of households for own use</b>	<b>9</b>	<b>13</b>	<b>17</b>
97	Activities of households as employers of domestic personnel	8	11	15
98	Undifferentiated goods- and services-producing activities of private households for own use	1	2	2
<b>99</b>	<b>Activities of extraterritorial organisations and bodies</b>	<b>21</b>	<b>21</b>	<b>24</b>
<b>01-99</b>	<b>Total</b>	<b>54,463</b>	<b>56,245</b>	<b>58,924</b>

<sup>b</sup> Break in series (see methodological note 4)

Table 4. Part-time employment classified by period, economic activity, part-time job type and category ...

NACE division	Economic activity	Type of part-time job	Category	Average 2012	Average 2013 (Revised)	October 2014 <sup>b</sup>
01-03	Agriculture, forestry and fishing	Part-timers holding a full-time job	Males	1,309	1,258	1,237
			Females	58	65	63
			Malta	1,037	1,014	996
			Gozo	330	309	304
			<b>Total</b>	<b>1,367</b>	<b>1,323</b>	<b>1,300</b>
			Part-time as a primary job	Males	824	823
		Females		163	166	175
		Malta		818	824	804
		Gozo		169	165	162
		<b>Total</b>		<b>987</b>	<b>989</b>	<b>966</b>
		<b>Total</b>		<b>Total</b>	<b>2,354</b>	<b>2,312</b>
		05-09	Mining and quarrying	Part-timers holding a full-time job	Males	9
Females	1				1	-
Malta	4				5	4
Gozo	6				8	10
<b>Total</b>	<b>10</b>				<b>13</b>	<b>14</b>
Part-time as a primary job	Males				15	15
	Females			7	4	3
	Malta			17	15	14
	Gozo			5	4	5
	<b>Total</b>			<b>22</b>	<b>19</b>	<b>19</b>
	<b>Total</b>			<b>Total</b>	<b>32</b>	<b>32</b>
10-33	Manufacturing			Part-timers holding a full-time job	Males	936
		Females	213		207	236
		Malta	1,026		1,047	1,102
		Gozo	123		123	115
		<b>Total</b>	<b>1,149</b>		<b>1,170</b>	<b>1,217</b>
		Part-time as a primary job	Males		907	933
			Females	846	889	897
			Malta	1,624	1,698	1,733
			Gozo	129	124	115
			<b>Total</b>	<b>1,753</b>	<b>1,822</b>	<b>1,848</b>
			<b>Total</b>	<b>Total</b>	<b>2,902</b>	<b>2,992</b>
		35	Electricity, gas, steam and air conditioning supply	Part-timers holding a full-time job	Males	4
Females	-				-	-
Malta	4				5	8
Gozo	-				-	-
<b>Total</b>	<b>4</b>				<b>5</b>	<b>8</b>
Part-time as a primary job	Males				3	4
	Females			1	1	1
	Malta			4	5	5
	Gozo			-	-	-
	<b>Total</b>			<b>4</b>	<b>5</b>	<b>5</b>
	<b>Total</b>			<b>Total</b>	<b>8</b>	<b>10</b>

... Table 4. Part-time employment classified by period, economic activity, part-time job type and category

NACE division	Economic activity	Type of part-time job	Category	Average 2012	Average 2013 (Revised)	October 2014 <sup>b</sup>
36-39	Water supply; sewerage, waste management and remediation activities	Part-timers holding a full-time job	Males	59	55	59
			Females	10	7	6
			Malta	61	55	58
			Gozo	8	7	7
			<b>Total</b>	<b>69</b>	<b>62</b>	<b>65</b>
		Part-time as a primary job	Males	69	73	66
			Females	48	48	45
			Malta	108	112	106
			Gozo	9	9	5
			<b>Total</b>	<b>117</b>	<b>121</b>	<b>111</b>
		<b>Total</b>	<b>Total</b>	<b>186</b>	<b>183</b>	<b>176</b>
41-43	Construction	Part-timers holding a full-time job	Males	824	816	771
			Females	50	48	59
			Malta	667	668	652
			Gozo	207	196	178
			<b>Total</b>	<b>874</b>	<b>864</b>	<b>830</b>
		Part-time as a primary job	Males	621	626	604
			Females	170	165	165
			Malta	671	685	657
			Gozo	120	106	112
			<b>Total</b>	<b>791</b>	<b>791</b>	<b>769</b>
		<b>Total</b>	<b>Total</b>	<b>1,665</b>	<b>1,655</b>	<b>1,599</b>
45-47	Wholesale and retail trade; repair of motor vehicles and motorcycles	Part-timers holding a full-time job	Males	2,275	2,284	2,321
			Females	1,068	1,140	1,204
			Malta	3,043	3,115	3,223
			Gozo	300	309	302
			<b>Total</b>	<b>3,343</b>	<b>3,424</b>	<b>3,525</b>
		Part-time as a primary job	Males	1,961	2,030	2,065
			Females	4,234	4,499	4,732
			Malta	5,761	6,081	6,331
			Gozo	434	448	466
			<b>Total</b>	<b>6,195</b>	<b>6,529</b>	<b>6,797</b>
		<b>Total</b>	<b>Total</b>	<b>9,538</b>	<b>9,953</b>	<b>10,322</b>
49-53	Transportation and storage	Part-timers holding a full-time job	Males	730	733	814
			Females	129	127	125
			Malta	799	795	879
			Gozo	60	65	60
			<b>Total</b>	<b>859</b>	<b>860</b>	<b>939</b>
		Part-time as a primary job	Males	773	837	866
			Females	400	439	475
			Malta	1,113	1,210	1,276
			Gozo	60	66	65
			<b>Total</b>	<b>1,173</b>	<b>1,276</b>	<b>1,341</b>
		<b>Total</b>	<b>Total</b>	<b>2,032</b>	<b>2,136</b>	<b>2,280</b>



... Table 4. Part-time employment classified by period, economic activity, part-time job type and category

NACE division	Economic activity	Type of part-time job	Category	Average 2012	Average 2013 (Revised)	October 2014 <sup>b</sup>
55-56	Accommodation and food service activities	Part-timers holding a full-time job	Males	2,617	2,498	2,573
			Females	1,031	1,010	1,047
			Malta	3,361	3,223	3,347
			Gozo	287	285	273
			<b>Total</b>	<b>3,648</b>	<b>3,508</b>	<b>3,620</b>
			Part-time as a primary job	Males	2,991	3,053
		Females	3,458	3,449	3,728	
		Malta	5,959	6,000	6,449	
		Gozo	490	502	512	
		<b>Total</b>	<b>6,449</b>	<b>6,502</b>	<b>6,961</b>	
		<b>Total</b>	<b>Total</b>	<b>10,097</b>	<b>10,010</b>	<b>10,581</b>
		58-63	Information and communication	Part-timers holding a full-time job	Males	583
Females	222				203	170
Malta	765				718	622
Gozo	40				33	32
<b>Total</b>	<b>805</b>				<b>751</b>	<b>654</b>
Part-time as a primary job	Males				373	372
Females	328			306	298	
Malta	680			658	646	
Gozo	21			20	21	
<b>Total</b>	<b>701</b>			<b>678</b>	<b>667</b>	
<b>Total</b>	<b>Total</b>			<b>1,506</b>	<b>1,429</b>	<b>1,321</b>
64-66	Financial and insurance activities			Part-timers holding a full-time job	Males	179
		Females	89		95	110
		Malta	261		281	305
		Gozo	7		7	10
		<b>Total</b>	<b>268</b>		<b>288</b>	<b>315</b>
		Part-time as a primary job	Males		149	177
		Females	300	334	421	
		Malta	436	498	613	
		Gozo	13	13	13	
		<b>Total</b>	<b>449</b>	<b>511</b>	<b>626</b>	
		<b>Total</b>	<b>Total</b>	<b>717</b>	<b>799</b>	<b>941</b>
		68	Real estate activities	Part-timers holding a full-time job	Males	188
Females	116				126	113
Malta	257				255	252
Gozo	47				51	53
<b>Total</b>	<b>304</b>				<b>306</b>	<b>305</b>
Part-time as a primary job	Males				104	110
Females	189			203	195	
Malta	258			274	268	
Gozo	35			39	39	
<b>Total</b>	<b>293</b>			<b>313</b>	<b>307</b>	
<b>Total</b>	<b>Total</b>			<b>597</b>	<b>619</b>	<b>612</b>

... Table 4. Part-time employment classified by period, economic activity, part-time job type and category

NACE division	Economic activity	Type of part-time job	Category	Average 2012	Average 2013 (Revised)	October 2014 <sup>b</sup>
69-75	Professional, scientific and technical activities	Part-timers holding a full-time job	Males	966	1,061	1,049
			Females	591	647	593
			Malta	1,481	1,620	1,559
			Gozo	76	88	83
		<b>Total</b>	<b>1,557</b>	<b>1,708</b>	<b>1,642</b>	
		Part-time as a primary job	Males	805	885	870
			Females	1,134	1,233	1,182
			Malta	1,877	2,062	1,990
			Gozo	62	56	62
		<b>Total</b>	<b>1,939</b>	<b>2,118</b>	<b>2,052</b>	
		<b>Total</b>	<b>Total</b>	<b>3,496</b>	<b>3,826</b>	<b>3,694</b>
77-82	Administrative and support service activities	Part-timers holding a full-time job	Males	1,854	1,930	1,978
			Females	782	772	709
			Malta	2,565	2,631	2,591
			Gozo	71	71	96
		<b>Total</b>	<b>2,636</b>	<b>2,702</b>	<b>2,687</b>	
		Part-time as a primary job	Males	1,065	1,215	1,429
			Females	1,531	1,650	1,867
			Malta	2,537	2,791	3,191
			Gozo	59	74	105
		<b>Total</b>	<b>2,596</b>	<b>2,865</b>	<b>3,296</b>	
		<b>Total</b>	<b>Total</b>	<b>5,232</b>	<b>5,567</b>	<b>5,983</b>
84	Public administration and defence; compulsory social security	Part-timers holding a full-time job	Males	282	346	387
			Females	248	363	547
			Malta	478	627	826
			Gozo	52	82	108
		<b>Total</b>	<b>530</b>	<b>709</b>	<b>934</b>	
		Part-time as a primary job	Males	268	307	428
			Females	1,006	1,079	1,160
			Malta	1,142	1,240	1,439
			Gozo	132	146	149
		<b>Total</b>	<b>1,274</b>	<b>1,386</b>	<b>1,588</b>	
		<b>Total</b>	<b>Total</b>	<b>1,804</b>	<b>2,095</b>	<b>2,522</b>
85	Education	Part-timers holding a full-time job	Males	1,554	1,514	1,557
			Females	1,397	1,401	1,554
			Malta	2,813	2,767	2,959
			Gozo	138	148	152
		<b>Total</b>	<b>2,951</b>	<b>2,915</b>	<b>3,111</b>	
		Part-time as a primary job	Males	937	997	1,092
			Females	1,615	1,712	1,825
			Malta	2,442	2,606	2,813
			Gozo	110	103	104
		<b>Total</b>	<b>2,552</b>	<b>2,709</b>	<b>2,917</b>	
		<b>Total</b>	<b>Total</b>	<b>5,503</b>	<b>5,624</b>	<b>6,028</b>

... Table 4. Part-time employment classified by period, economic activity, part-time job type and category

NACE division	Economic activity	Type of part-time job	Category	Average 2012	Average 2013 (Revised)	October 2014 <sup>b</sup>
86-88	Human health and social work activities	Part-timers holding a full-time job	Males	567	582	584
			Females	765	852	886
			Malta	1,250	1,344	1,379
			Gozo	82	90	91
			<b>Total</b>	<b>1,332</b>	<b>1,434</b>	<b>1,470</b>
			Part-time as a primary job	Males	302	343
		Females	1,314	1,464	1,737	
		Malta	1,545	1,724	1,972	
		Gozo	71	83	116	
		<b>Total</b>	<b>1,616</b>	<b>1,807</b>	<b>2,088</b>	
		<b>Total</b>	<b>Total</b>	<b>2,948</b>	<b>3,241</b>	<b>3,558</b>
90-93	Arts, entertainment and recreation	Part-timers holding a full-time job	Males	537	509	506
			Females	280	255	256
			Malta	774	719	719
			Gozo	43	45	43
			<b>Total</b>	<b>817</b>	<b>764</b>	<b>762</b>
			Part-time as a primary job	Males	443	402
		Females	512	518	502	
		Malta	928	893	921	
		Gozo	27	27	21	
		<b>Total</b>	<b>955</b>	<b>920</b>	<b>942</b>	
		<b>Total</b>	<b>Total</b>	<b>1,772</b>	<b>1,684</b>	<b>1,704</b>
94-96	Other service activities	Part-timers holding a full-time job	Males	401	369	369
			Females	248	258	287
			Malta	594	577	606
			Gozo	55	50	50
			<b>Total</b>	<b>649</b>	<b>627</b>	<b>656</b>
			Part-time as a primary job	Males	445	424
		Females	950	993	1,086	
		Malta	1,273	1,292	1,409	
		Gozo	122	125	120	
		<b>Total</b>	<b>1,395</b>	<b>1,417</b>	<b>1,529</b>	
		<b>Total</b>	<b>Total</b>	<b>2,044</b>	<b>2,044</b>	<b>2,185</b>
97-98	Activities of households as employers; undifferentiated goods- and services-producing activities of households for own use	Part-timers holding a full-time job	Males	1	2	2
			Females	1	1	2
			Malta	-	1	2
			Gozo	2	2	2
			<b>Total</b>	<b>2</b>	<b>3</b>	<b>4</b>
			Part-time as a primary job	Males	1	2
		Females	6	8	10	
		Malta	3	6	12	
		Gozo	4	4	1	
		<b>Total</b>	<b>7</b>	<b>10</b>	<b>13</b>	
		<b>Total</b>	<b>Total</b>	<b>9</b>	<b>13</b>	<b>17</b>

... Table 4. Part-time employment classified by period, economic activity, part-time job type and category

NACE division	Economic activity	Type of part-time job	Category	Average 2012	Average 2013 (Revised)	October 2014 <sup>b</sup>
99	Activities of extraterritorial organisations and bodies	Part-timers holding a full-time job	Males	1	1	1
			Females	1	1	1
			Malta	2	2	2
			Gozo	-	-	-
			<b>Total</b>	<b>2</b>	<b>2</b>	<b>2</b>
			Part-time as a primary job	Males	4	4
		Females		15	15	18
		Malta		18	19	22
		Gozo		1	-	-
		<b>Total</b>		<b>19</b>	<b>19</b>	<b>22</b>
		<b>Total</b>		<b>21</b>	<b>21</b>	<b>24</b>
		01-99	Total	Part-timers holding a full-time job	Males	15,876
Females	7,300				7,579	7,968
Malta	21,242				21,469	22,091
Gozo	1,934				1,969	1,969
<b>Total</b>	<b>23,176</b>				<b>23,438</b>	<b>24,060</b>
Part-time as a primary job	Males				13,060	13,632
	Females			18,227	19,175	20,522
	Malta			29,214	30,693	32,671
	Gozo			2,073	2,114	2,193
	<b>Total</b>			<b>31,287</b>	<b>32,807</b>	<b>34,864</b>
	<b>Total</b>			<b>54,463</b>	<b>56,245</b>	<b>58,924</b>

<sup>b</sup> Break in series (see methodological note 4)

## Methodological Notes

1. Data in this release are based on administrative records of the Employment and Training Corporation (ETC). The data are classified according to the NACE Rev. 2 classification of economic activity.
2. The information contained in this release may be subject to revision. Monthly data are revised in the subsequent year.
3. Full-time and part-time status is defined by what the employer (or self-employed person) declares in the Engagement Form which is required to be sent to the ETC upon the commencement of employment.
4. Registered part-time data are currently being revised, and the monthly figures presented here are not comparable with those in previous releases and with the annual average figures presented in this release.
5. Apprentices are also included under their respective economic activity.
6. **Definitions:**
  - **Part 1 of the unemployment register:** Persons registering under Part 1 are either new job seekers, re-entrants into the labour market, or job losers who have been made redundant by their former employer.
  - **Part 2 of the unemployment register:** Persons registering under Part 2 are either workers who have been dismissed from work due to disciplinary action, left work out of their own free will, refused work or training opportunities or were struck off the register following an inspection by the Law Enforcement personnel.
  - **Apprentices:** Includes apprentices, trainees, Junior College and University of Malta students in the summer work-phase, undergraduate trainees, and trainees with fixed contracts.
  - **Labour Supply:** Full-time gainfully occupied population and the registered unemployed population.
  - **Malta/Gozo employment:** Data on regional employment differ on the basis of economic sector. Accordingly, private sector data depend on employee residence whereas public sector data depend on employees' location information supplied by the employer.
7. Gainfully occupied population data for January-July 2013 includes ex-MRRA workers under Construction (NACE 41-43). Following changes in ministerial responsibilities, these workers were shifted to a new ministry with a different economic activity, namely Public administration and defence; compulsory social security (NACE 84). As a result, there was a change in the way this group of employees was considered for statistical purposes in the course of 2013, resulting in a break in comparability in the time series within these areas of economic activity. For this reason, the average number of employees for NACE 41-43 and NACE 84 is not being computed.

The NSO is currently working with its main data providers in order to eliminate these inconsistencies in the time series and plans to publish revised and statistically adjusted time series data on registered employment in the coming months.

8. More information relating to this news release may be accessed at: <http://nso.gov.mt/metadata/concepts.aspx>