

12 May 2015 | 1100 hrs | 090/2015

There were two traffic fatalities in the first quarter this year.

## Traffic Accidents: Q1/2015

In the first quarter of 2015, the number of reported traffic accidents reached 3,572, an increase of 10.1 percent over the corresponding quarter last year. Increases were recorded in all districts. The Northern Harbour district registered the most accidents, with 1,374 cases, or 38.5 per cent of all accidents (Table 1).

In total, 362 traffic casualties were reported, of which 207 involved drivers. Other, 176 injuries were slight and the another 31 were reported as grievous. During this period, 33 other persons (10 passengers and 23 pedestrians) suffered grievous injuries, while 120 (86 passengers and 34 pedestrians) were slightly injured. Furthermore, the injuries suffered by one passenger and one pedestrian were fatal (Tables 3-6).

On a gender basis, slightly-injured persons in the first quarter this year numbered 296: 159 males and 137 females. Grievously-injured persons totalled 64, the majority being males. The fatalities in the quarter under review comprised of two males. The majority of casualties (29.6 per cent), fell in the 26-40 age bracket (Table 7).

The largest number of traffic casualties (76.5 per cent), were caused by passenger cars, followed by motorcycles (16.6 per cent), and goods-carrying vehicles (5.5 per cent) (Table 8).

In the first quarter of 2015, the highest traffic casualty rate occurred on Sundays, accounting for 17.7 per cent of total casualties while the highest number of accidents were recorded on Fridays, totalling 564 cases, and the lowest were recorded on Sundays, with 365 cases. Sundays topped the highest casualty-to-accidents ratio, with 17.5 per cent compared to an overall average of 10.1 per cent (Table 9).

The daily time bracket in which most accidents occurred was between 12:00 and 14:59, with 796 cases, or 22.3 per cent of the total. This was followed by the 09:00-11:59 time bracket, with 745 cases. The least number of accidents occurring daily took place between 03:00 and 05:59 (81 cases) (Table 10).

The highest rate of traffic accidents, was registered in Birkirkara with 283 cases. Marsa and Hal Qormi were next, with 208 and 174 reported accidents respectively (Table 11) ■

Compiled by:

**Unit A4: International  
Trade and Transport  
Statistics**

**Directorate A: Economic  
Statistics**

Further information on data:

**Mr Anthony PORTELLI**  
T. +356 2599 7160  
E. [anthony.portelli@gov.mt](mailto:anthony.portelli@gov.mt)

Kindly indicate source when quoting from this release.  
The advance release calendar may be consulted at [www.nso.gov.mt](http://www.nso.gov.mt)

Issued by: **External Cooperation and Communication Unit, National Statistics Office, Lascaris, Valletta VLT 2000, Malta.**  
T. +356 2599 7219 F. +356 2599 7205 E. [nso@gov.mt](mailto:nso@gov.mt)

**Table 1. Total road traffic accidents: January-March**

Region/District	2014	2015	Change	Percentage change
<b>MALTA</b>	<b>3,244</b>	<b>3,572</b>	<b>328</b>	<b>10.1</b>
<b>Malta</b>	<b>3,107</b>	<b>3,406</b>	<b>299</b>	<b>9.6</b>
Southern Harbour	755	823	68	9.0
Northern Harbour	1,206	1,374	168	13.9
South Eastern	302	302	-	-
Western	394	408	14	3.6
Northern	450	499	49	10.9
<b>Gozo and Comino</b>	<b>137</b>	<b>166</b>	<b>29</b>	<b>21.2</b>

**Table 2. Minor road traffic accidents: January-March**

Region/District	2014	2015	Change	Percentage change
<b>MALTA</b>	<b>2,945</b>	<b>3,276</b>	<b>331</b>	<b>11.2</b>
<b>Malta</b>	<b>2,822</b>	<b>3,133</b>	<b>311</b>	<b>11.0</b>
Southern Harbour	684	745	61	8.9
Northern Harbour	1,106	1,288	182	16.5
South Eastern	259	271	12	4.6
Western	367	376	9	2.5
Northern	406	453	47	11.6
<b>Gozo and Comino</b>	<b>123</b>	<b>143</b>	<b>20</b>	<b>16.3</b>

**Table 3. Casualties in road traffic accidents: January-March**

Region/District	2014	2015	Change	Percentage change
<b>MALTA</b>	<b>379</b>	<b>362</b>	<b>-17</b>	<b>-4.5</b>
<b>Malta</b>	<b>360</b>	<b>336</b>	<b>-24</b>	<b>-6.7</b>
Southern Harbour	90	97	7	7.8
Northern Harbour	111	104	-7	-6.3
South Eastern	56	39	-17	-30.4
Western	38	40	2	5.3
Northern	65	56	-9	-13.8
<b>Gozo and Comino</b>	<b>19</b>	<b>26</b>	<b>7</b>	<b>36.8</b>

**Table 4. Injuries sustained by drivers in road traffic accidents: January-March**

Region/District	2014				2015			
	Slight	Grievous	Fatal	Total	Slight	Grievous	Fatal	Total
<b>MALTA</b>	<b>180</b>	<b>33</b>	<b>3</b>	<b>216</b>	<b>176</b>	<b>31</b>	<b>-</b>	<b>207</b>
<b>Malta</b>	<b>173</b>	<b>32</b>	<b>3</b>	<b>208</b>	<b>161</b>	<b>30</b>	<b>-</b>	<b>191</b>
Southern Harbour	49	7	-	56	44	12	-	56
Northern Harbour	53	11	-	64	43	9	-	52
South Eastern	26	6	1	33	20	4	-	24
Western	20	2	-	22	22	1	-	23
Northern	25	6	2	33	32	4	-	36
<b>Gozo and Comino</b>	<b>7</b>	<b>1</b>	<b>-</b>	<b>8</b>	<b>15</b>	<b>1</b>	<b>-</b>	<b>16</b>

**Table 5. Injuries sustained by passengers in road traffic accidents: January-March**

Region/District	2014				2015			
	Slight	Grievous	Fatal	Total	Slight	Grievous	Fatal	Total
<b>MALTA</b>	<b>77</b>	<b>12</b>	<b>-</b>	<b>89</b>	<b>86</b>	<b>10</b>	<b>1</b>	<b>97</b>
<b>Malta</b>	<b>74</b>	<b>9</b>	<b>-</b>	<b>83</b>	<b>82</b>	<b>9</b>	<b>-</b>	<b>91</b>
Southern Harbour	18	1	-	19	28	1	-	29
Northern Harbour	16		-	16	21	1	-	22
South Eastern	12	3	-	15	10	2	-	12
Western	7	3	-	10	9	1	-	10
Northern	21	2	-	23	14	4	-	18
<b>Gozo and Comino</b>	<b>3</b>	<b>3</b>	<b>-</b>	<b>6</b>	<b>4</b>	<b>1</b>	<b>1</b>	<b>6</b>

**Table 6. Injuries sustained by pedestrians in road traffic accidents: January-March**

Region/District	2014				2015			
	Slight	Grievous	Fatal	Total	Slight	Grievous	Fatal	Total
<b>MALTA</b>	<b>40</b>	<b>32</b>	<b>2</b>	<b>74</b>	<b>34</b>	<b>23</b>	<b>1</b>	<b>58</b>
<b>Malta</b>	<b>37</b>	<b>30</b>	<b>2</b>	<b>69</b>	<b>32</b>	<b>21</b>	<b>1</b>	<b>54</b>
Southern Harbour	9	4	2	15	8	4	-	12
Northern Harbour	16	15	-	31	18	11	1	30
South Eastern	5	3	-	8	2	1	-	3
Western	2	4	-	6	3	4	-	7
Northern	5	4	-	9	1	1	-	2
<b>Gozo and Comino</b>	<b>3</b>	<b>2</b>	<b>-</b>	<b>5</b>	<b>2</b>	<b>2</b>	<b>-</b>	<b>4</b>

**Table 7. Traffic casualties by type of injury, age group and sex: January-March**

Age group	2014	2015			
	Total	Slight	Grievous	Fatal	Total
<b>Males</b>					
0-10	5	10	2	-	12
11-17	5	7	2	-	9
18-25	63	43	8	1	52
26-40	61	47	14	-	61
41-59	51	32	11	1	44
60-65	14	8	3	-	11
66+	18	11	4	-	15
unknown	-	1	-	-	1
<b>Total</b>	<b>217</b>	<b>159</b>	<b>44</b>	<b>2</b>	<b>205</b>
<b>Females</b>					
0-10	8	5	1	-	6
11-17	15	5	-	-	5
18-25	31	26	3	-	29
26-40	50	42	4	-	46
41-59	32	31	6	-	37
60-65	13	12	1	-	13
66+	13	16	5	-	21
unknown	-	-	-	-	-
<b>Total</b>	<b>162</b>	<b>137</b>	<b>20</b>	<b>-</b>	<b>157</b>
<b>Total</b>					
0-10	13	15	3	-	18
11-17	20	12	2	-	14
18-25	94	69	11	1	81
26-40	111	89	18	-	107
41-59	83	63	17	1	81
60-65	27	20	4	-	24
66+	31	27	9	-	36
unknown	-	1	-	-	1
<b>Total</b>	<b>379</b>	<b>296</b>	<b>64</b>	<b>2</b>	<b>362</b>

Table 8. Road traffic casualties by type of injury, age group and means of transport

Vehicle type	January-March				
	2014	2015			
	Total	Slight	Grievous	Fatal	Total
<b>0-10</b>	<b>13</b>	<b>15</b>	<b>3</b>	-	<b>18</b>
Motorcycle	-	-	-	-	-
Passenger car	13	14	3	-	17
Coach and bus	-	-	-	-	-
Goods vehicle	-	-	-	-	-
Unknown vehicle type	-	1	-	-	1
<b>11-17</b>	<b>20</b>	<b>12</b>	<b>2</b>	-	<b>14</b>
Motorcycle	-	1	-	-	1
Passenger car	12	11	2	-	13
Coach and bus	1	-	-	-	-
Goods vehicle	7	-	-	-	-
Unknown vehicle type	-	-	-	-	-
<b>18-25</b>	<b>94</b>	<b>69</b>	<b>11</b>	<b>1</b>	<b>81</b>
Motorcycle	10	13	2	-	15
Passenger car	77	53	9	1	63
Coach and bus	-	-	-	-	-
Goods vehicle	7	2	-	-	2
Unknown vehicle type	-	1	-	-	1
<b>26-40</b>	<b>111</b>	<b>89</b>	<b>18</b>	-	<b>107</b>
Motorcycle	16	19	8	-	27
Passenger car	84	62	9	-	71
Coach and bus	2	1	-	-	1
Goods vehicle	7	7	1	-	8
Unknown vehicle type	2	-	-	-	-
<b>41-59</b>	<b>83</b>	<b>63</b>	<b>17</b>	<b>1</b>	<b>81</b>
Motorcycle	14	12	2	-	14
Passenger car	60	47	14	1	62
Coach and bus	4	-	-	-	-
Goods vehicle	5	4	1	-	5
Unknown vehicle type	-	-	-	-	-
<b>60-65</b>	<b>27</b>	<b>20</b>	<b>4</b>	-	<b>24</b>
Motorcycle	2	1	-	-	1
Passenger car	21	17	1	-	18
Coach and bus	4	1	1	-	2
Goods vehicle	-	1	2	-	3
Unknown vehicle type	-	-	-	-	-
<b>66+</b>	<b>31</b>	<b>27</b>	<b>9</b>	-	<b>36</b>
Motorcycle	4	1	1	-	2
Passenger car	25	24	8	-	32
Coach and bus	-	-	-	-	-
Goods vehicle	-	2	-	-	2
Unknown vehicle type	2	-	-	-	-
<b>Age unknown</b>	-	<b>1</b>	-	-	<b>1</b>
Motorcycle	-	-	-	-	-
Passenger car	-	1	-	-	1
Coach and bus	-	-	-	-	-
Goods vehicle	-	-	-	-	-
Unknown vehicle type	-	-	-	-	-
<b>Total</b>	<b>379</b>	<b>296</b>	<b>64</b>	<b>2</b>	<b>362</b>
Motorcycle	46	47	13	-	60
Passenger car	292	229	46	2	277
Coach and bus	11	2	1	-	3
Goods vehicle	26	16	4	-	20
Unknown vehicle type	4	2	-	-	2

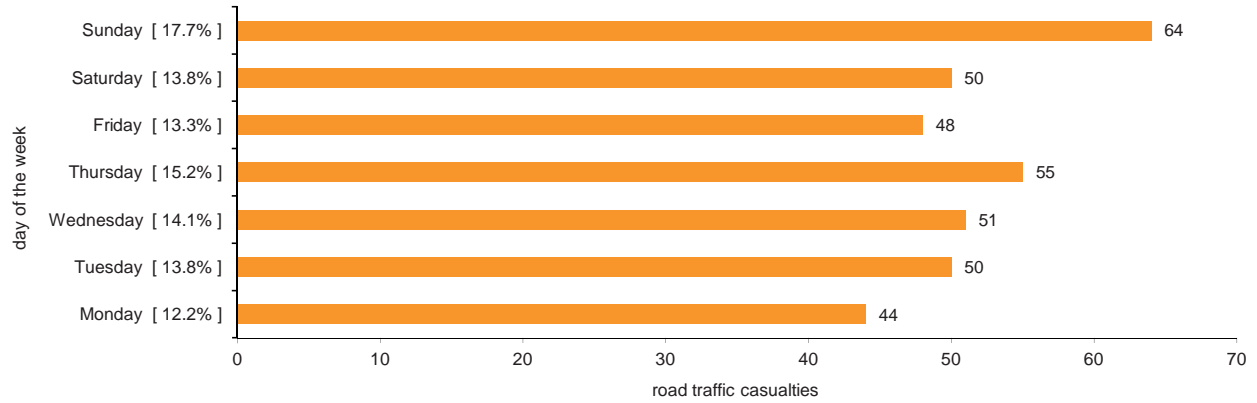
**Table 9. Road traffic casualties and accidents by day of the week: January-March**

	Monday	Tuesday	Wednesday	Thursday	Friday	Saturday	Sunday	Total
<b>Traffic casualties</b>	44	50	51	55	48	50	64	<b>362</b>
<b>Traffic accidents</b>	541	549	509	529	564	515	365	<b>3,572</b>
<b>Ratio* (%)</b>	8.1	9.1	10.0	10.4	8.5	9.7	17.5	<b>10.1</b>

\*Casualties-to-accidents ratio

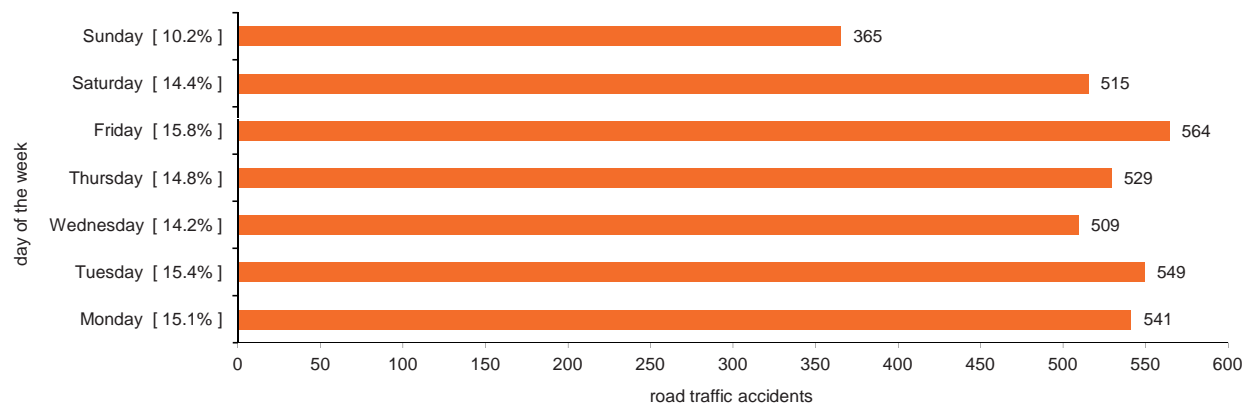
**Chart 1**

Total road traffic casualties by day of the week: Q1/2015



**Chart 2**

Total road traffic accidents by day of the week: Q1/2015



**Table 10. Road traffic accidents by day and time of day: January-March**

Time	Monday	Tuesday	Wednesday	Thursday	Friday	Saturday	Sunday	Total
00:00 - 02:59	10	6	6	8	6	15	27	78
03:00 - 05:59	7	4	3	9	4	19	29	75
06:00 - 08:59	95	104	98	106	103	63	40	609
09:00 - 11:59	112	99	114	116	118	129	57	745
12:00 - 14:59	125	124	105	116	117	129	80	796
15:00 - 17:59	104	125	104	98	121	67	60	679
18:00 - 20:59	72	72	63	52	77	55	48	439
21:00 - 23:59	16	15	16	24	18	38	24	151
<b>Total</b>	<b>541</b>	<b>549</b>	<b>509</b>	<b>529</b>	<b>564</b>	<b>515</b>	<b>365</b>	<b>3,572</b>

**Chart 3**  
Traffic accidents by day and time of day: Q1/2015

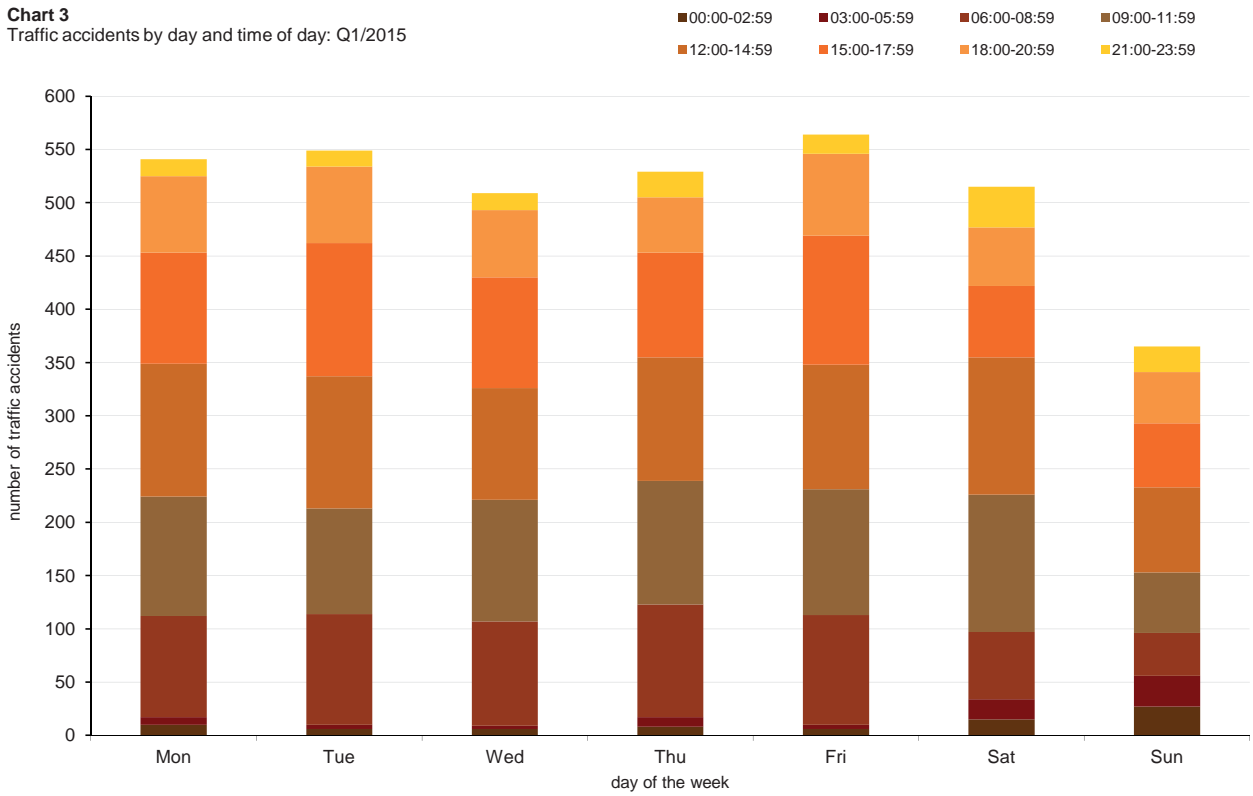


Table 11. Road traffic accidents by locality\*: January-March ...

Locality	2014	2015	Change
<b>Southern Harbour</b>	<b>755</b>	<b>823</b>	<b>68</b>
Cospicua	31	14	-17
Fgura	59	82	23
Floriana	53	60	7
Hal Luqa	83	78	-5
Hal Tarxien	75	73	-2
Haż-Żabbar	85	77	-8
Kalkara	6	14	8
Marsa	183	208	25
Paola	109	132	23
Santa Luċija	9	17	8
Senglea	4	15	11
Valletta	44	42	-2
Vittoriosa	11	6	-5
Xghajra	3	5	2
<b>Northern Harbour</b>	<b>1,206</b>	<b>1,374</b>	<b>168</b>
Birkirkara	220	283	63
Gżira	93	101	8
Hal Qormi	172	174	2
Hamrun	63	88	25
Msida	129	149	20
Pembroke	18	16	-2
San Ġwann	116	144	28
Santa Venera	62	75	13
St Julian's	113	108	-5
Swieqi	47	50	3
Ta' Xbiex	16	18	2
Tal-Pietà	54	58	4
Tas-Sliema	103	110	7
<b>South Eastern</b>	<b>302</b>	<b>302</b>	<b>-</b>
Birżebbuġa	33	42	9
Gudja	48	32	-16
Hal Ghaxaq	23	28	5
Hal Kirkop	19	10	-9
Hal Safi	8	8	-
Marsaskala	46	45	-1
Marsaxlokk	16	16	-
Mqabba	17	16	-1
Qrendi	8	7	-1
Żejtun	60	57	-3
Żurrieq	24	41	17
<b>Western</b>	<b>394</b>	<b>408</b>	<b>14</b>
Had-Dingli	8	7	-1
Hal Balzan	27	43	16
Hal Lija	50	61	11
H'Attard	101	92	-9
Haż-Żebbuġ	64	72	8
Iklin	17	18	1
Mdina	5	8	3
Mtarfa	6	55	49
Rabat	89	47	-42
Siggiewi	27	5	-22
<b>Northern</b>	<b>450</b>	<b>499</b>	<b>49</b>
Hal Ghargħur	10	21	11
Mellieħa	65	79	14
Mġarr	24	35	11
Mosta	148	121	-27
Naxxar	76	125	49
St Paul's Bay	127	118	-9



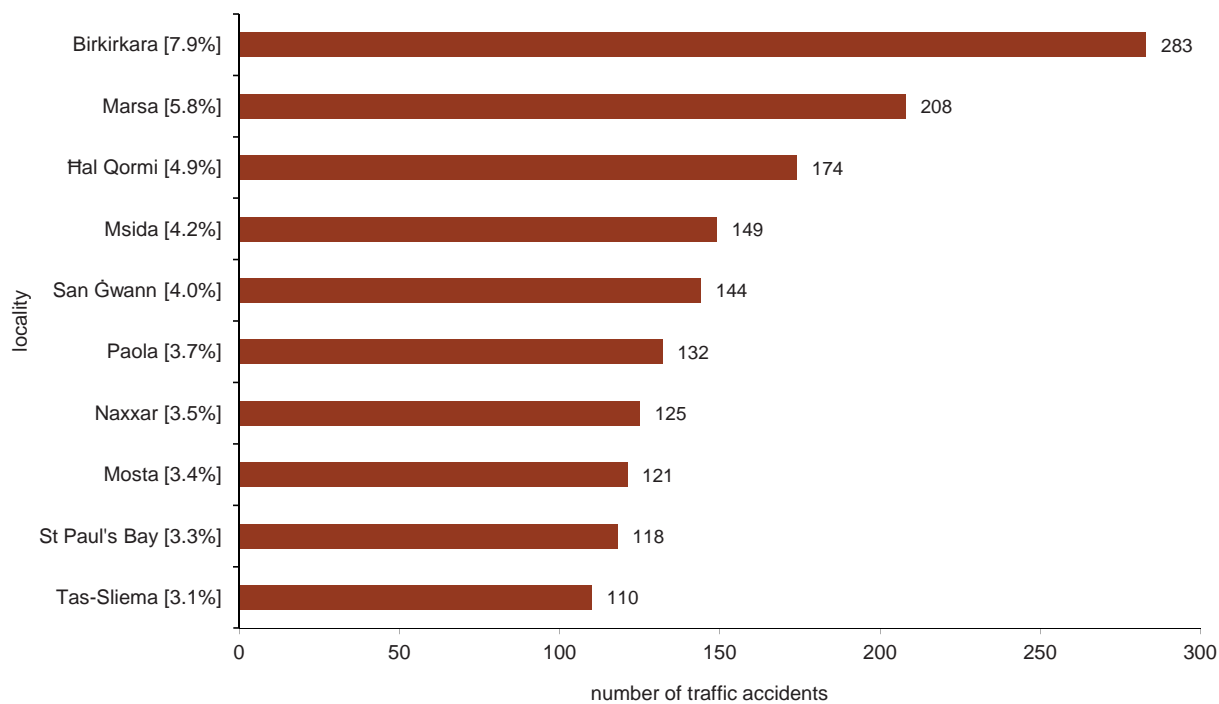
... Table 11. Road traffic accidents by locality\*: January-March

Locality	2014	2015	Change
<b>Gozo and Comino</b>	<b>137</b>	<b>166</b>	<b>29</b>
Fontana	4	4	-
Ghajnsielem	19	28	9
Għarb	5	1	-4
Għasri	2	3	1
Munxar	2	1	-1
Nadur	14	15	1
Qala	1	5	4
San Lawrenz	-	-	-
Ta' Kerċem	1	2	1
Ta' Sannat	4	3	-1
Victoria	46	67	21
Xagħra	12	6	-6
Xewkija	18	18	-
Żebbuġ	9	13	4

\* Localities are grouped under main Local Councils

**Chart 4**

Top ten localities in which most accidents occurred: January-March 2015



## Methodological Notes

1. Traffic accident data are compiled from administrative information provided by the Police Department, the Guard and Warden Services Limited and the Malta Insurance Association
2. The type of casualty (slight or grievous) is determined by the Health Department. The definitions of deaths caused by road accidents refer to the European Conference for Ministers of Transport (ECMT) and United Nations Economic Commission for Europe (UNECE).
3. UNECE definition of fatal injury: "Any person who was killed outright or who died within 30 days as a result of the accident".
4. Minor traffic accidents refer to accidents in which no persons are injured and which are assessed by the police and by the traffic wardens.
5. Minor traffic accidents which are not reported or those reported to Insurance Agencies by means of the Traffic Accident Form (i.e. no Police or Wardens are called on the accident scene and those involved in the accident decide to settle by filling in the form) are not accounted for.
6. Data may be subject to revision.
7. More information relating to this news release may be accessed at:  
Statistical Concepts: <http://nso.gov.mt/metadata/concepts.aspx>