

10 July 2015 | 1100 hrs | 129/2015

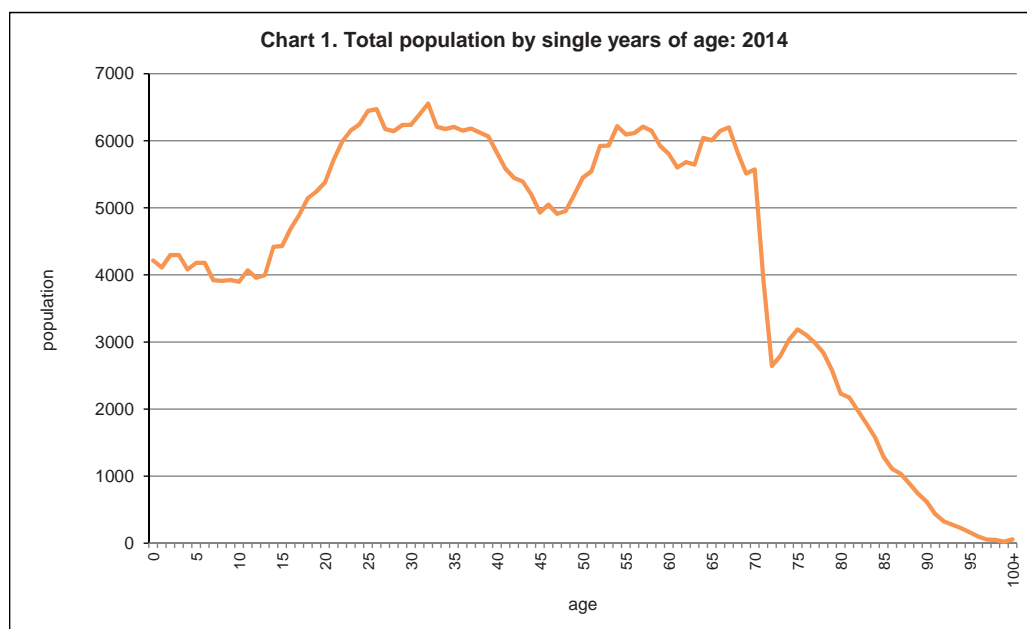
The total population of Malta at the end of 2014 stood at 429,344, up by 0.9 per cent when compared to 2013.

## World Population Day: 11 July 2015

The population increase was mainly due to net migration (immigration less emigration). In the total population, persons under 18 years of age made up 17.6 per cent, and persons aged 65 and over 18.5 per cent. Of these, 2,332 persons - 1,661 females and 671 males - were over 89 years. The Maltese population accounted for 93.6 per cent of the total population (Tables 1 and 2).

Live births registered in 2014 increased by 4.5 per cent over the previous year (Table 4). 109 babies, or 2.5 per cent, were born to teenage mothers. Almost two-thirds of babies were born to mothers aged 25-34 (Table 5). In 2014, there were 3,270 registered deaths of which 63.5 per cent were persons aged 75 and over (Table 6).

An increase of 293 registered marriages was observed last year: 246 in Malta and 47 in Gozo. Civil marriages accounted for 48.3 per cent of the total, an increase of 15.8 per cent over the previous year (Table 7). From the perspective of age, nearly 20 per cent occurred between spouses aged 25-29. Nearly a one-third of grooms were aged 25-29 and 30.5 per cent between 30-34. Just over 40 per cent of brides were aged 25-29 and 24.1 per cent 30-34 (Table 8) ■



Compiled by:

**Unit C3: Population and  
Tourism Statistics**

**Directorate C: Social  
Statistics**

Further information on data:

**Mr Matthew ZERAFA**

T. +356 2599 7630

E. matthew.zerafa@gov.mt

Kindly indicate source when quoting from this release.  
The advance release calendar may be consulted at [www.nso.gov.mt](http://www.nso.gov.mt)

Issued by: **External Cooperation and Communication Unit, National Statistics Office, Lascaris, Valletta VLT 2000, Malta.**  
T. +356 2599 7219 F. +356 2599 7205 E. [nso@gov.mt](mailto:nso@gov.mt)

**Table 1. End-of-year population estimates**

<b>Year</b>	<b>Males</b>	<b>Females</b>	<b>Total</b>
<b>Total population</b>			
2005*	200,838	204,161	404,999
2006	201,519	204,097	405,616
2007	202,734	205,098	407,832
2008	204,607	206,319	410,926
2009	206,203	207,824	414,027
2010	206,405	208,584	414,989
2011*	207,695	209,851	417,546
2012	209,880	211,484	421,364
2013	212,424	212,960	425,384
2014	214,735	214,609	429,344
<b>Maltese population</b>			
2005*	194,906	197,934	392,840
2006	194,791	197,424	392,215
2007	195,254	197,853	393,107
2008	195,681	198,454	394,135
2009	196,052	199,023	395,075
2010	196,397	199,453	395,850
2011*	197,027	200,217	397,244
2012	197,857	201,041	398,898
2013	198,648	201,756	400,404
2014	199,381	202,487	401,868

\* Based on Census taken in year

Table 2. Total population by single years of age as on 31 December 2014

Age group/ Single years	Males	Females	Total	Age group/ Single years	Males	Females	Total
<b>0-9</b>	<b>21,332</b>	<b>19,781</b>	<b>41,113</b>	<b>50-59</b>	<b>29,920</b>	<b>29,620</b>	<b>59,540</b>
Less than 1	2,231	1,984	4,215	50	2,766	2,685	5,451
1	2,155	1,955	4,110	51	2,801	2,742	5,543
2	2,233	2,064	4,297	52	2,970	2,952	5,922
3	2,172	2,124	4,296	53	3,017	2,909	5,926
4	2,077	2,004	4,081	54	3,109	3,106	6,215
5	2,145	2,035	4,180	55	3,006	3,085	6,091
6	2,179	2,001	4,180	56	3,024	3,090	6,114
7	2,063	1,857	3,920	57	3,105	3,103	6,208
8	2,051	1,859	3,910	58	3,099	3,049	6,148
9	2,026	1,898	3,924	59	3,023	2,899	5,922
<b>10-19</b>	<b>23,068</b>	<b>21,669</b>	<b>44,737</b>	<b>60-69</b>	<b>28,700</b>	<b>29,758</b>	<b>58,458</b>
10	1,996	1,902	3,898	60	2,913	2,891	5,804
11	2,033	2,034	4,067	61	2,800	2,799	5,599
12	2,057	1,898	3,955	62	2,802	2,879	5,681
13	2,051	1,947	3,998	63	2,763	2,881	5,644
14	2,192	2,226	4,418	64	3,011	3,029	6,040
15	2,245	2,185	4,430	65	2,977	3,029	6,006
16	2,406	2,284	4,690	66	3,006	3,142	6,148
17	2,574	2,321	4,895	67	2,976	3,222	6,198
18	2,727	2,417	5,144	68	2,794	3,034	5,828
19	2,787	2,455	5,242	69	2,658	2,852	5,510
<b>20-29</b>	<b>31,718</b>	<b>29,221</b>	<b>60,939</b>	<b>70-79</b>	<b>14,826</b>	<b>17,847</b>	<b>32,673</b>
20	2,810	2,570	5,380	70	2,705	2,866	5,571
21	2,969	2,744	5,713	71	1,816	2,123	3,939
22	3,121	2,867	5,988	72	1,235	1,408	2,643
23	3,168	2,985	6,153	73	1,263	1,531	2,794
24	3,251	2,992	6,243	74	1,370	1,664	3,034
25	3,262	3,182	6,444	75	1,444	1,743	3,187
26	3,362	3,107	6,469	76	1,379	1,724	3,103
27	3,204	2,969	6,173	77	1,288	1,700	2,988
28	3,283	2,859	6,142	78	1,252	1,586	2,838
29	3,288	2,946	6,234	79	1,074	1,502	2,576
<b>30-39</b>	<b>32,245</b>	<b>30,044</b>	<b>62,289</b>	<b>80-89</b>	<b>5,501</b>	<b>9,296</b>	<b>14,797</b>
30	3,256	2,981	6,237	80	914	1,315	2,229
31	3,317	3,075	6,392	81	842	1,330	2,172
32	3,367	3,186	6,553	82	737	1,241	1,978
33	3,195	3,014	6,209	83	630	1,153	1,783
34	3,220	2,954	6,174	84	572	1,007	1,579
35	3,187	3,019	6,206	85	459	827	1,286
36	3,182	2,968	6,150	86	403	704	1,107
37	3,220	2,962	6,182	87	358	676	1,034
38	3,130	2,993	6,123	88	325	564	889
39	3,171	2,892	6,063	89	261	479	740
<b>40-49</b>	<b>26,754</b>	<b>25,712</b>	<b>52,466</b>	<b>90+</b>	<b>671</b>	<b>1,661</b>	<b>2,332</b>
40	3,012	2,808	5,820				
41	2,827	2,756	5,583	<b>Total</b>	<b>214,735</b>	<b>214,609</b>	<b>429,344</b>
42	2,771	2,673	5,444				
43	2,769	2,622	5,391				
44	2,676	2,524	5,200				
45	2,543	2,387	4,930				
46	2,575	2,473	5,048				
47	2,460	2,449	4,909				
48	2,516	2,434	4,950				
49	2,605	2,586	5,191				

Note: Figures are based on Census of Population and Housing 2011.

**Table 3. Composition of population: 2014**

	<b>Males</b>	<b>Females</b>	<b>Total</b>
Population end 2013	212,424	212,960	425,384
+ Births*	2,223	1,968	4,191
+ Adoptions (foreign)	9	17	26
- Deaths	1,655	1,615	3,270
<b>Sub-total</b>	<b>213,001</b>	<b>213,330</b>	<b>426,331</b>
<b>Migration flows:</b>			
+ Immigration of Maltese nationals	942	890	1,832
- Emigration of Maltese nationals	761	514	1,275
+ Immigration of Other EU nationals	2,706	1,728	4,434
- Emigration of Other EU nationals	1,779	1,287	3,066
+ Immigration of Third-country nationals	1,733	921	2,654
- Emigration of Third-country nationals	1,107	459	1,566
<b>Population end 2014</b>	<b>214,735</b>	<b>214,609</b>	<b>429,344</b>

\* Birth figures refer to babies born to mothers who are resident of Malta

**Table 4. Total registered live births by region**

Year	MALTA			Malta		Gozo	
	Total	Boys	Girls	Boys	Girls	Boys	Girls
2005	3,858	1,984	1,874	1,842	1,733	142	141
2006	3,885	2,039	1,846	1,884	1,715	155	131
2007	3,871	2,036	1,835	1,894	1,717	142	118
2008*	4,126	2,151	1,975	1,990	1,836	160	137
2009	4,143	2,146	1,997	2,032	1,869	114	128
2010	4,008	2,056	1,952	1,904	1,817	152	135
2011	4,283	2,182	2,101	2,044	1,960	138	141
2012	4,231	2,191	2,040	2,038	1,914	153	126
2013	4,127	2,160	1,967	2,012	1,848	148	119
2014	4,311	2,286	2,025	2,140	1,896	146	129

\* Total births include three with unspecified localities

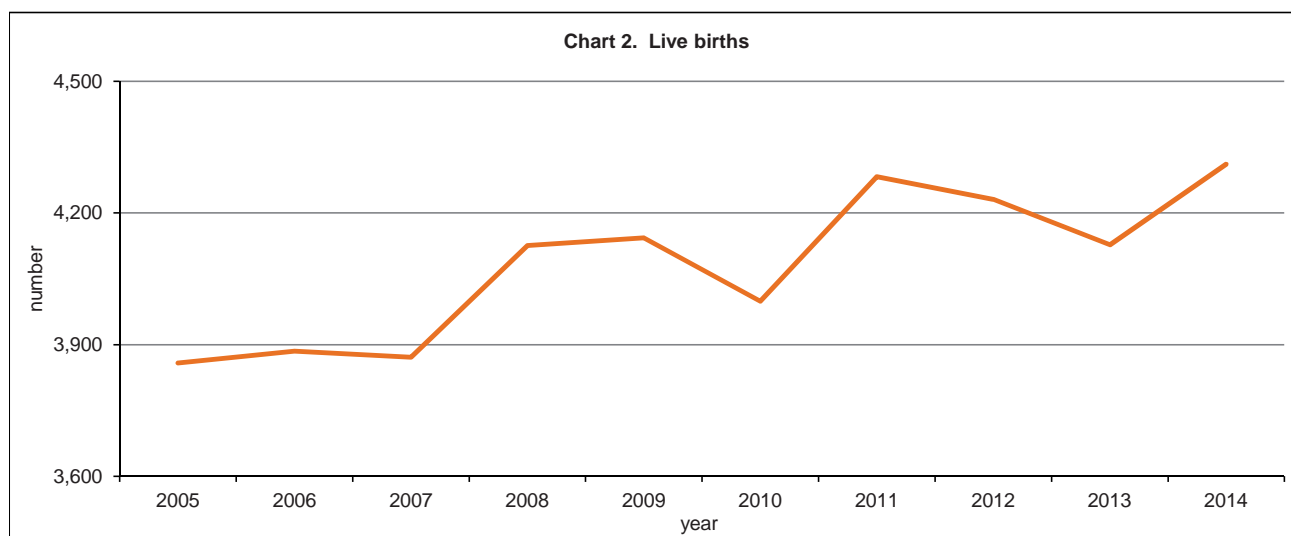


Table 5. Total registered live births by age group of mother/father: 2014

Ages	Age group of mother		Age group of father	
	Boys	Girls	Boys	Girls
<b>All ages</b>	<b>2,286</b>	<b>2,025</b>	<b>2,286</b>	<b>2,025</b>
Under 20	63	46	13	12
20-24	272	258	150	115
25-29	683	570	383	369
30-34	769	713	761	676
35-39	417	365	575	466
40-44	79	66	205	204
45-49	3	6	62	50
50-54	-	-	18	14
55-59	-	-	7	9
60-64	-	-	1	2
65+	-	-	1	-
Unspecified	-	1	110	108

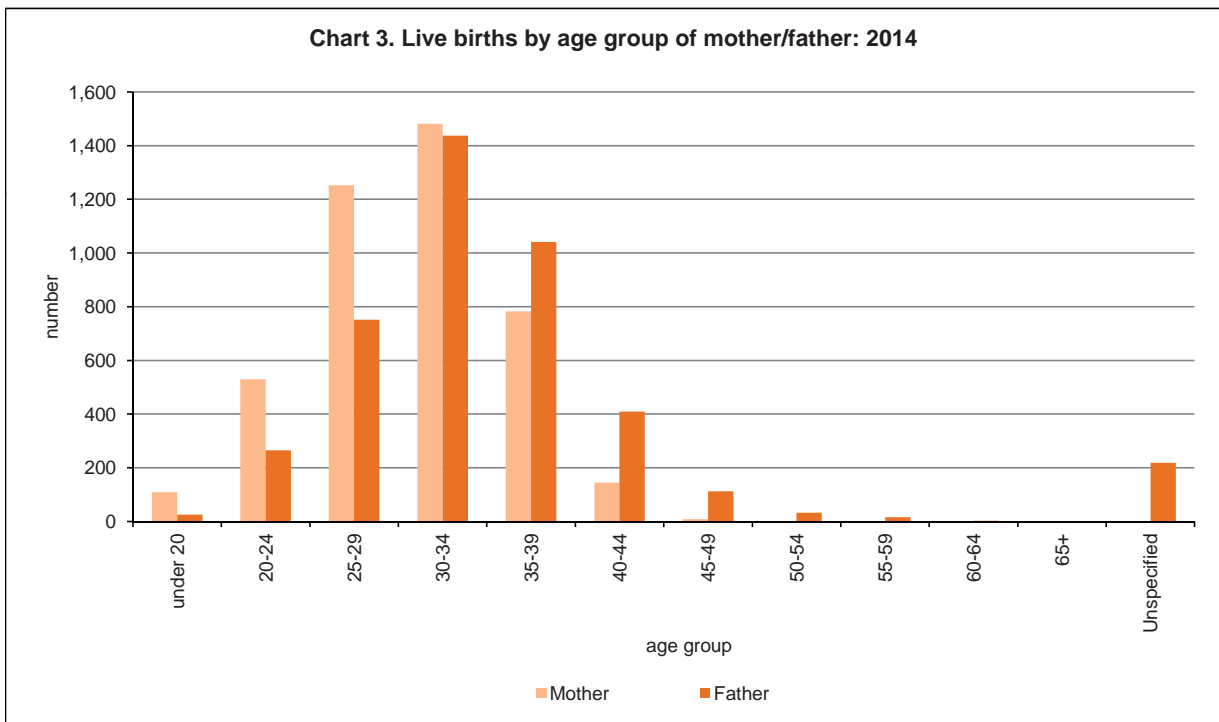


Table 6. Deaths by age reached at last birthday

Year	Age												Total
	Under 1	1-4	5-9	10-14	15-19	20-24	25-34	35-44	45-54	55-64	65-74	75+	
<b>Males</b>													
2005	13	2	-	2	8	9	21	21	72	198	374	857	<b>1,577</b>
2006	10	1	-	3	7	12	17	38	95	202	393	889	<b>1,667</b>
2007	9	1	1	3	7	16	28	35	77	211	368	854	<b>1,610</b>
2008	22	5	-	2	3	6	29	36	97	260	336	872	<b>1,668</b>
2009	11	1	1	2	6	11	27	28	71	222	352	940	<b>1,672</b>
2010	13	2	-	2	5	9	23	37	77	221	328	772	<b>1,489</b>
2011	13	-	1	-	9	7	22	29	82	219	371	911	<b>1,664</b>
2012	11	1	1	1	1	7	24	37	77	231	364	991	<b>1,746</b>
2013	14	1	-	1	3	10	13	29	72	212	375	906	<b>1,636</b>
2014	11	1	1	3	4	6	22	35	73	195	395	909	<b>1,655</b>
<b>Females</b>													
2005	9	4	4	1	2	2	4	17	63	126	237	1,086	<b>1,555</b>
2006	4	3	-	3	2	1	6	17	52	135	258	1,068	<b>1,549</b>
2007	16	-	1	2	1	1	6	19	51	142	250	1,012	<b>1,501</b>
2008	12	1	1	1	1	3	7	11	50	145	251	1,092	<b>1,575</b>
2009	11	2	1	2	2	4	15	10	52	136	217	1,097	<b>1,549</b>
2010	9	2	-	3	1	3	4	11	49	131	235	1,073	<b>1,521</b>
2011	14	3	1	1	2	1	13	19	46	124	228	1,151	<b>1,603</b>
2012	11	2	-	2	2	1	14	18	55	137	233	1,197	<b>1,672</b>
2013	13	1	-	-	2	5	4	10	40	110	217	1,198	<b>1,600</b>
2014	10	1	-	1	2	1	7	17	27	133	249	1,167	<b>1,615</b>
<b>Total</b>													
2005	22	6	4	3	10	11	25	38	135	324	611	1,943	<b>3,132</b>
2006	14	4	-	6	9	13	23	55	147	337	651	1,957	<b>3,216</b>
2007	25	1	2	5	8	17	34	54	128	353	618	1,866	<b>3,111</b>
2008	34	6	1	3	4	9	36	47	147	405	587	1,964	<b>3,243</b>
2009	22	3	2	4	8	15	42	38	123	358	569	2,037	<b>3,221</b>
2010	22	4	-	5	6	12	27	48	126	352	563	1,845	<b>3,010</b>
2011	27	3	2	1	11	8	35	48	128	343	599	2,062	<b>3,267</b>
2012	22	3	1	3	3	8	38	55	132	368	597	2,188	<b>3,418</b>
2013	27	2	-	1	5	15	17	39	112	322	592	2,104	<b>3,236</b>
2014	21	2	1	4	6	7	29	52	100	328	644	2,076	<b>3,270</b>

Table 7. Registered marriages in Malta and Gozo

Year	MALTA	Malta	Gozo	of which: Civil marriages	Crude marriage rate*
2005	2,374	2,216	158	779	5.9
2006	2,536	2,352	184	859	6.3
2007	2,479	2,326	153	867	6.1
2008	2,482	2,289	193	840	6.1
2009	2,353	2,158	195	832	5.7
2010	2,596	2,356	240	847	6.3
2011	2,562	2,377	185	965	6.2
2012	2,823	2,612	211	1,170	6.7
2013	2,578	2,405	173	1,199	6.1
2014	2,871	2,651	220	1,388	6.7

\*Number of marriages per 1,000 persons in total mid-year population

Table 8. Registered marriages by age group of spouses: 2014

Age group of bride	Age group of groom												Total
	16-19	20-24	25-29	30-34	35-39	40-44	45-49	50-54	55-59	60-64	65+	Unspecified	
16-19	1	5	12	3	1	-	-	-	-	-	-	-	22
20-24	-	87	207	68	7	4	2	-	1	-	-	-	376
25-29	-	41	570	415	85	35	5	1	-	-	-	-	1,152
30-34	-	7	118	319	145	57	26	11	4	3	2	-	692
35-39	-	-	17	57	71	55	18	10	5	-	-	-	233
40-44	-	1	4	7	20	38	24	12	12	2	4	-	124
45-49	-	2	2	4	5	16	42	27	19	4	5	-	126
50-54	-	1	1	1	1	1	10	21	13	12	8	-	69
55-59	-	-	-	2	-	1	3	4	6	10	11	-	37
60-64	-	-	-	-	-	-	2	1	5	5	8	-	21
65+	-	-	-	-	-	-	-	-	1	1	9	-	11
Unspecified	-	-	-	-	-	-	-	-	-	-	-	8	8
<b>Total</b>	<b>1</b>	<b>144</b>	<b>931</b>	<b>876</b>	<b>335</b>	<b>207</b>	<b>132</b>	<b>87</b>	<b>66</b>	<b>37</b>	<b>47</b>	<b>8</b>	<b>2,871</b>

## Methodological Notes

### 1. Definitions

- **Total population:** all Maltese and foreign persons residing in Malta. Total and Maltese mid-year population is calculated by averaging start-of-the-year and end-year population estimates.
- **Usual residence:** refers to the place where a person normally spends the daily period of rest, regardless of temporary absences for purposes of recreation, holidays, visits to friends and relatives, business, medical treatment or religious pilgrimage. Usual residents of a specific geographical area are:
  - i those who have lived in their place of usual residence for a continuous period of at least 12 months before the reference time; or
  - ii those who arrived in their place of usual residence during the 12 months before the reference time with the intention of staying there for at least one year.

Note: The 'usual residence' concept is used to compile the total population figure (Tables 1, 2 and 3). The methodology is in line with European Regulation (EU) No. 1260/2013.

- **Total registered live births:** all births registered in Malta and Gozo by Maltese and foreign parents. Still births are excluded.
- **Total registered marriages:** all marriages registered in Malta and Gozo. These include marriages between non-resident foreign spouses.
- **Civil marriages:** all non-religious marriages that are recognised by Maltese law.
- **Crude marriage rate:** total number of marriages per thousand mid-year population.
- **Total deaths:** all registered Maltese and foreign deaths in Malta and Gozo. These count exclude deaths of tourists, but include Maltese residents who die abroad and who are subsequently buried in Malta. This definition excludes still births.
- **Third Country Nationals:** refers to Non-EU citizens.
- **Emigration:** the action by which a natural person leaves his/her usual residence in the territory of the Member State for a period that is or is expected to last a minimum of 12 months.
- **Immigration:** the action by which a natural person establishes his/her usual residence in the territory of the Member State for a period that is or is expected to last a minimum of 12 months.

### 2. Sources:

- Demographic data in this release is based on records held by the Public Registry and the Directorate of Health Information and Research.
- Migration data is based on relevant administrative records and on estimates based on auxiliary information.