

1 October 2015 | 1100 hrs | 177/2015

Total arrivals and nights spent in collective accommodation establishments during July 2015 increased by 2.7 and 1.0 per cent respectively compared to the corresponding month in 2014.

## Collective Accommodation Establishments: July 2015

Cut-off date:  
**25 September 2015**

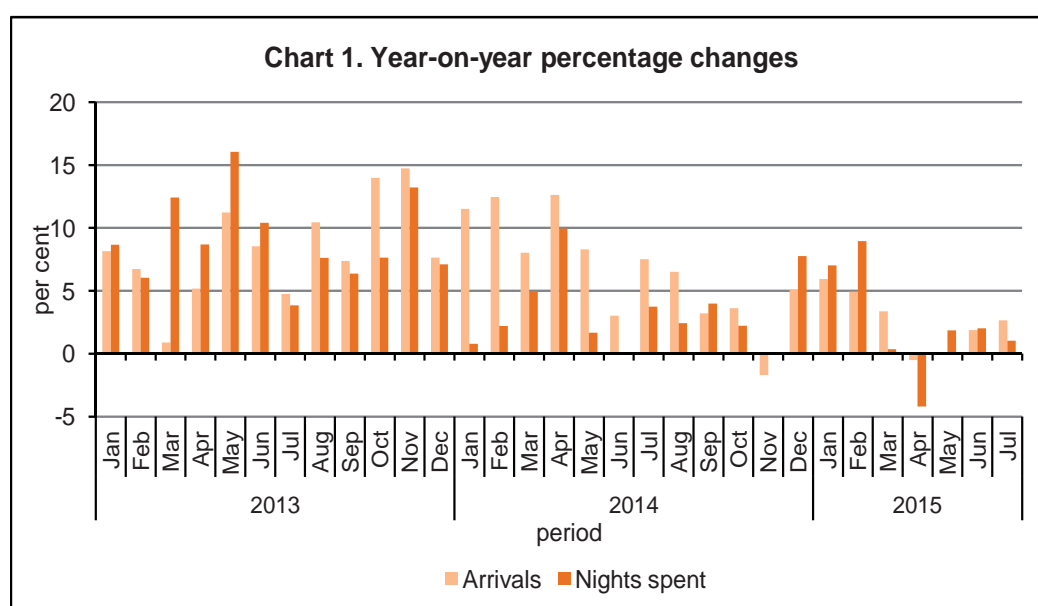
In July, total arrivals in collective accommodation establishments numbered 169,407, while total nights spent amounted to almost 1.1 million. Collective accommodation categories registered increases in total nights spent, with the exception of 4-star hotels. The largest share of guest nights was reported in 4-star hotels, accounting for 484,453 nights, or 44.4 per cent of the total (Tables 1 and 2).

The average length of stay in collective accommodation establishments went down to 6.4 nights in July 2015 from 6.5 nights in the same month of 2014. The net use of bed-places stood at 83.4 per cent, down by 0.9 percentage points when compared to the corresponding month last year (Table 3).

On a national level, there were 177 active collective accommodation establishments during July, with a net capacity of 18,760 bedrooms and 42,194 bed-places (Table 4).

### January-July

Total arrivals during the first seven months of 2015 amounted to 897,770, an increase of 2.1 per cent over the same period in 2014 (Table 1). Total nights spent went up by 1.6 per cent, reaching nearly 5.0 million (Table 2). The net use of bed-places advanced by 2.3 percentage points to 62.8 per cent (Table 3) ■



Compiled by:

**Unit C3: Population and  
Tourism Statistics**

**Directorate C: Social  
Statistics**

Further information on data:

**Mr Matthew ZERAFA**  
T. +356 2599 7630  
E. matthew.zerafa@gov.mt

Kindly indicate source when quoting from this release.  
The advance release calendar may be consulted at [www.nso.gov.mt](http://www.nso.gov.mt)

Issued by: **External Cooperation and Communication Unit, National Statistics Office, Lascaris, Valletta VLT 2000, Malta.**  
T. +356 2599 7219 F. +356 2599 7205 E. [nso@gov.mt](mailto:nso@gov.mt)

**Table 1. Total arrivals by period, region and type of accommodation**

Type of accommodation	June*	July		January-July	
	2015	2014	2015	2014	2015
	MALTA				
Hotel	150,922	157,391	162,275	845,239	866,901
5 Star	36,163	40,397	40,035	226,087	214,300
4 Star	63,022	66,926	66,540	371,117	388,004
3 Star	46,631	44,743	49,509	224,337	239,667
2 Star	5,106	5,325	6,191	23,698	24,929
Other collective accommodation <sup>1</sup>	5,887	7,633	7,132	34,100	30,869
<b>Total</b>	<b>156,809</b>	<b>165,024</b>	<b>169,407</b>	<b>879,338</b>	<b>897,770</b>
	Malta				
Hotel	142,163	147,994	152,333	798,447	820,535
of which:					
5 Star	33,794	37,739	37,366	213,217	202,307
4 Star	59,826	62,035	63,065	347,290	366,502
3 Star	44,152	43,544	46,572	217,647	229,974
Other collective accommodation <sup>1</sup>	5,449	7,242	6,590	32,635	29,040
<b>Total</b>	<b>147,612</b>	<b>155,236</b>	<b>158,923</b>	<b>831,082</b>	<b>849,575</b>
	Gozo and Comino				
Hotel	8,759	9,397	9,942	46,792	46,366
of which:					
5 Star	2,369	2,658	2,669	12,870	11,993
4 Star	3,196	4,891	3,475	23,827	21,502
3 Star	2,479	1,199	2,937	6,690	9,693
Other collective accommodation <sup>1</sup>	438	391	542	1,464	1,829
<b>Total</b>	<b>9,197</b>	<b>9,788</b>	<b>10,484</b>	<b>48,256</b>	<b>48,195</b>

\* Revised

<sup>1</sup> Comprises guesthouses, hostels and tourist villages

Note: Totals may not add up due to rounding.

**Table 2. Total nights spent by period, region and type of accommodation**

Type of accommodation	June*	July		January-July	
	2015	2014	2015	2014	2015
	MALTA				
Hotel	856,092	1,021,280	1,030,536	4,648,394	4,726,705
5 Star	165,407	198,556	204,377	931,533	900,218
4 Star	408,994	493,855	484,453	2,292,002	2,373,192
3 Star	254,306	295,464	303,735	1,281,160	1,304,329
2 Star	27,386	33,405	37,972	143,699	148,965
Other collective accommodation <sup>1</sup>	43,600	58,312	60,332	254,773	255,927
<b>Total</b>	<b>899,692</b>	<b>1,079,593</b>	<b>1,090,868</b>	<b>4,903,167</b>	<b>4,982,631</b>
	Malta				
Hotel	820,167	980,491	987,949	4,486,999	4,564,446
of which:					
5 Star	156,222	187,778	192,724	886,459	857,080
4 Star	393,967	469,575	467,155	2,200,439	2,293,038
3 Star	244,806	292,219	293,300	1,265,709	1,275,038
Other collective accommodation <sup>1</sup>	42,155	56,886	58,231	249,909	250,194
<b>Total</b>	<b>862,322</b>	<b>1,037,377</b>	<b>1,046,181</b>	<b>4,736,908</b>	<b>4,814,640</b>
	Gozo and Comino				
Hotel	35,925	40,789	42,587	161,395	162,259
of which:					
5 Star	9,185	10,778	11,653	45,074	43,138
4 Star	15,027	24,280	17,298	91,563	80,154
3 Star	9,500	3,245	10,435	15,451	29,291
Other collective accommodation <sup>1</sup>	1,445	1,426	2,101	4,864	5,733
<b>Total</b>	<b>37,370</b>	<b>42,215</b>	<b>44,688</b>	<b>166,259</b>	<b>167,992</b>

\* Revised

<sup>1</sup> Comprises guesthouses, hostels and tourist villages

Note: Totals may not add up due to rounding.

**Table 3. Net use of bed-places by period, region and type of accommodation**

Type of accommodation	June*	July		January-July	
	2015	2014	2015	2014	2015
	MALTA				
Hotel	76.9	86.2	85.0	62.2	64.5
5 Star	84.9	89.7	92.3	63.6	69.7
4 Star	81.3	89.3	88.4	68.5	69.2
3 Star	69.5	82.3	77.8	54.1	56.5
2 Star	56.0	64.6	71.5	47.5	50.5
Other collective accommodation <sup>1</sup>	49.2	61.1	63.7	40.5	42.4
<b>Total</b>	<b>74.9</b>	<b>84.3</b>	<b>83.4</b>	<b>60.5</b>	<b>62.8</b>
Type of accommodation	Malta				
	77.4	86.6	85.3	62.7	65.1
	Hotel				
of which:					
5 Star	86.1	90.2	92.9	64.2	70.6
4 Star	81.6	89.8	88.7	69.4	70.0
3 Star	69.8	82.7	78.3	54.4	56.6
Other collective accommodation <sup>1</sup>	50.2	62.3	64.8	41.3	43.7
<b>Total</b>	<b>75.4</b>	<b>84.8</b>	<b>83.9</b>	<b>61.0</b>	<b>63.5</b>
Type of accommodation	Gozo and Comino				
	66.9	77.3	76.7	50.4	51.0
	Hotel				
of which:					
5 Star	68.5	81.0	84.1	52.9	55.0
4 Star	72.8	80.9	81.1	53.5	51.9
3 Star	62.1	56.9	66.0	40.4	51.0
Other collective accommodation <sup>1</sup>	30.7	34.3	43.2	20.4	19.1
<b>Total</b>	<b>63.9</b>	<b>74.1</b>	<b>74.0</b>	<b>48.3</b>	<b>48.3</b>

\* Revised

<sup>1</sup> Comprises guesthouses, hostels and tourist villages

**Table 4. Establishments with net number of bedrooms and bed-places by period, region and type of accommodation**

Type of accommodation	July						
	Establishments		Bedrooms		Bed-places		
	2014	2015	2014	2015	2014	2015	
Type of accommodation	MALTA						
	Hotel	124	131	17,326	17,517	38,229	39,132
	5 Star	15	15	3,468	3,460	7,142	7,142
4 Star	45	44	8,086	7,852	17,841	17,686	
3 Star	48	54	5,072	5,465	11,577	12,590	
2 Star	16	18	700	740	1,669	1,714	
Other collective accommodation <sup>1</sup>	41	46	1,254	1,243	3,079	3,062	
<b>Total</b>	<b>165</b>	<b>177</b>	<b>18,580</b>	<b>18,760</b>	<b>41,308</b>	<b>42,194</b>	
Type of accommodation	Malta						
	113	118	16,522	16,673	36,526	37,341	
	Hotel						
of which:							
5 Star	13	13	3,262	3,245	6,713	6,695	
4 Star	40	40	7,623	7,530	16,873	16,998	
3 Star	45	49	4,985	5,217	11,393	12,080	
Other collective accommodation <sup>1</sup>	36	39	1,193	1,175	2,945	2,905	
<b>Total</b>	<b>149</b>	<b>157</b>	<b>17,715</b>	<b>17,848</b>	<b>39,471</b>	<b>40,246</b>	
Type of accommodation	Gozo and Comino						
	11	13	804	844	1,703	1,791	
	Hotel						
of which:							
5 Star	2	2	206	215	429	447	
4 Star	5	4	463	322	968	688	
3 Star	3	5	87	248	184	510	
Other collective accommodation <sup>1</sup>	5	7	61	68	134	157	
<b>Total</b>	<b>16</b>	<b>20</b>	<b>865</b>	<b>912</b>	<b>1,837</b>	<b>1,948</b>	

<sup>1</sup> Comprises guesthouses, hostels and tourist villages

## Methodological Notes

1. The objective of the Survey on Collective Accommodation Establishments is to estimate the utilisation rate of bed-places of all active collective accommodation establishments in Malta and Gozo. The variables collected from the survey include:

- Number of residents;
- Number of non-residents;
- Nights spent by residents;
- Nights spent by non-residents;
- Number of room nights sold to foreign residents;
- Number of room nights sold to Maltese residents;
- Number of bedrooms;
- Number of bed-places;
- Number of days the establishment was closed during the month under review.

The collection of the above variables and the calculation of occupancy levels are in line with Regulation (EU) No. 692/2011.

2. The survey is distributed monthly to all collective accommodation establishments, namely hotels, guesthouses, hostels and tourist villages.

3. Response Rate:

June 2015	<b>90.5%</b>
July 2015	<b>91.0%</b>

4. In this release figures for June 2015 should be considered as a second estimate while those relating to July 2015 are a first estimate, therefore subject to revision in the ensuing release.

5. The Malta Tourism Authority (MTA) licensing department reclassified all collective accommodation establishments registered as apart-hotels to hotels (refer to Legal Notice 351 of 2012).

6. **Definitions:**

- **Bedroom:** a unit formed by one room or group of rooms constituting an indivisible rental whole in an accommodation establishment or dwelling.
- **Bed-place:** in an establishment, this is determined by the number of persons who can stay overnight in the establishment, not taking into account any extra beds that may be provided to clients on request.
- **Residents:** Maltese/Gozitan residents who check into/out of a collective accommodation establishment. A person is considered to be a Maltese/Gozitan resident if:
  - (a) S/he has lived for most of the past 12 months in Malta/Gozo;
  - (b) S/he has lived in Malta/Gozo for less than 12 months but intends to return within a year to settle here.
- **Non-residents:** foreigners who do not necessarily follow the definition of a tourist and check into/out of a collective accommodation establishment.
- **Total arrivals:** the number of residents and non-residents altogether.
- **Total nights spent:** nights which a guest actually spends or is registered to spend in a collective accommodation establishment.
- **Net use of bed-places:** the net occupancy rate calculated for all active accommodation establishments, net of seasonal closures and other temporary closures. The occupancy of bed-places is calculated by dividing the total nights during the reference period by the number of bed-places and the number of days when the bed-places are actually available for use during the reference period. The result is then multiplied by 100 to express the occupancy rate as a percentage.
- **Average length of stay:** this is calculated as follows: 
$$\frac{\text{total number of nights}}{\text{total number of arrivals}}$$

7. More information relating to this news release may be accessed at:

Statistical Concepts: <http://nso.gov.mt/metadata/concepts.aspx>

Metadata: <http://nso.gov.mt/metadata/reports.aspx?id=35>

Statistical Database: <http://nso.gov.mt/statdb/start>