

4 March 2016 | 1100 hrs | 040/2016

In September 2015, registered full-time employment increased by 4.2 per cent when compared to the corresponding month of the previous year, while registered part-time employment as a primary job rose by 3.0 per cent.

Gainfully Occupied Population: September 2015

Administrative data provided by the Employment and Training Corporation (ETC) show that over a period of one year, the labour supply (excluding part-timers) increased by 3.1 per cent, reaching 177,613. This was mainly attributed to an increase in the full-time gainfully occupied population (7,035) and a drop in registered unemployment (1,675) (Table 1).

Registered full-time employment

In September, administrative and support service activities (NACE 77-82) contributed mostly to the increase in employment, compared to September 2014 (Table 1). Registered full-time employment in the private sector went up by 6,997 persons to 128,280. Public sector full-time employment increased by 38 persons to 44,409 (Table 2).

The number of persons registered as full-time self-employed rose by 643 when compared to September 2014, while the number of persons registered as employees increased by 6,392. Full-time employment for males and females went up by 3.2 per cent and 6.1 per cent respectively over 2014 levels (Table 2).

Registered part-time employment

Registered part-time employment in September 2015 went up by 3.9 per cent when compared to a year earlier. The sectors that contributed most to the overall increase were by Accommodation and Food Service Activities (NACE 55-56, 504), Wholesale and Retail Trade, Repair of Motor Vehicles (NACE 45-47, 473) and Human health and social work activities (NACE 86-88, 330) (Table 3).

The number of part-timers who also held a full-time job amounted to 24,257, up by 5.3 per cent when compared to the corresponding month in 2014. Employed persons whose part-time job was their primary occupation totalled 35,429, up by 3.0 per cent or 1,041 persons when compared to 2014 (Table 4) ■

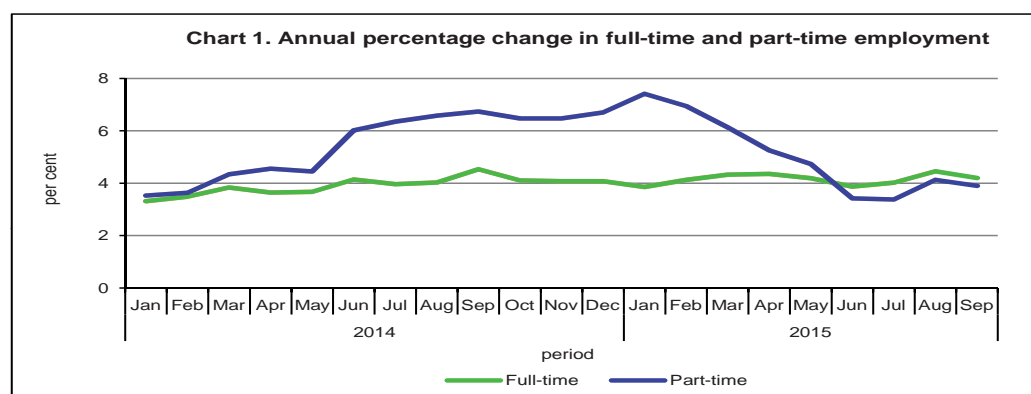
Compiled by:

**Unit C2: Labour Market
Statistics**

**Directorate C: Social
Statistics**

Further information on data:

**Ms Joslyn MAGRO
CUSCHIERI**
T. +356 2599 7662
E. joslyn.magro@gov.mt



Users are strongly advised to take into account the shifts referred to in methodological notes 6, 7 and 8 when analysing time series data.

Kindly indicate source when quoting from this release.

The advance release calendar may be consulted at www.nso.gov.mt

Issued by: **Dissemination Unit, National Statistics Office, Lascaris, Valletta VLT 2000, Malta.**

T. +356 2599 7219 F. +356 2599 7205 E. nso@gov.mt

<https://twitter.com/NSOMALTA/> | <https://www.facebook.com/nsomalta/>

Table 1. Full-time employment classified by period and economic activity ...

NACE division	Economic activity	Average 2013	Average 2014 (Revised)	August 2014	August 2015	September 2014 (revised)	September 2015
01-03	Agriculture, forestry and fishing	2,036	2,020	2,015	2,375	2,023	2,370
01	Crop and animal production, hunting and related service activities	1,516	1,504	1,493	1,817	1,496	1,810
02	Forestry and logging	-	-	-	-	-	-
03	Fishing and aquaculture	520	516	522	558	527	560
05-09	Mining and quarrying	295	333	333	359	347	362
05	Mining of coal and lignite	-	-	-	-	-	-
06	Extraction of crude petroleum and natural gas	-	-	-	-	-	-
07	Mining of metal ores	-	-	-	-	-	-
08	Other mining and quarrying	179	174	175	177	175	178
09	Mining support service activities	116	159	158	182	172	184
10-33	Manufacturing	20,285	20,424	20,430	20,697	20,442	20,574
10	Manufacture of food products	2,479	2,522	2,488	2,691	2,499	2,635
11	Manufacture of beverages	838	855	880	891	865	884
12	Manufacture of tobacco products	15	15	16	16	16	16
13	Manufacture of textiles	382	341	342	317	333	318
14	Manufacture of wearing apparel	356	348	363	346	348	336
15	Manufacture of leather and related products	32	31	30	30	30	30
16	Manufacture of wood and of products of wood and cork, except furniture; manufacture of articles of straw and plaiting materials	287	320	324	338	325	334
17	Manufacture of paper and paper products	213	207	202	206	204	206
18	Printing and reproduction of recorded media	1,437	1,417	1,424	1,336	1,410	1,330
19	Manufacture of coke and refined petroleum products	6	6	7	8	8	8
20	Manufacture of chemicals and chemical products	261	275	268	279	270	284
21	Manufacture of basic pharmaceutical products and pharmaceutical preparations	1,211	1,112	1,101	1,137	1,094	1,139
22	Manufacture of rubber and plastic products	1,693	1,670	1,660	1,602	1,649	1,594
23	Manufacture of other non-metallic mineral products	1,165	1,118	1,104	1,097	1,113	1,085
24	Manufacture of basic metals	73	92	98	122	100	128
25	Manufacture of fabricated metal products, except machinery and equipment	1,266	1,233	1,213	1,201	1,219	1,193
26	Manufacture of computer, electronic and optical products	2,191	2,209	2,201	2,283	2,215	2,282
27	Manufacture of electrical equipment	488	495	493	507	496	502
28	Manufacture of machinery and equipment n.e.c.	421	425	435	438	428	438
29	Manufacture of motor vehicles, trailers and semi-trailers	1,087	1,085	1,054	1,120	1,058	1,119
30	Manufacture of other transport equipment	38	65	65	74	68	76
31	Manufacture of furniture	1,120	1,113	1,111	1,104	1,113	1,107
32	Other manufacturing	1,937	2,091	2,164	2,182	2,166	2,125

... Table 1. Full-time employment classified by period and economic activity

NACE division	Economic activity	Average 2013	Average 2014 (Revised)	August 2014	August 2015	September 2014 (revised)	September 2015
33	Repair and installation of machinery and equipment	1,289	1,379	1,387	1,372	1,415	1,405
35	Electricity, gas, steam and air conditioning supply¹	1,539	892	17	30	6	12
36-39	Water supply; sewerage, waste management and remediation activities	1,421	1,442	1,491	1,393	1,490	1,388
36	Water collection, treatment and supply	979	1,001	1,046	994	1,047	984
37	Sewerage	9	8	7	5	7	5
38	Waste collection, treatment and disposal activities; materials recovery	421	419	423	378	421	384
39	Remediation activities and other waste management services	12	14	15	16	15	15
41-43	Construction²	10,919	9,290	9,247	10,319	9,298	10,331
41	Construction of buildings	5,183	3,328	3,283	4,121	3,294	4,137
42	Civil engineering	691	670	671	706	681	704
43	Specialised construction activities	5,045	5,292	5,293	5,492	5,323	5,490
45-47	Wholesale and retail trade; repair of motor vehicles and motorcycles	23,155	23,794	23,875	24,772	23,854	24,681
45	Wholesale and retail trade and repair of motor vehicles and motorcycles	2,177	2,222	2,218	2,278	2,226	2,280
46	Wholesale trade, except of motor vehicles and motorcycles	8,512	8,873	8,895	9,522	8,908	9,437
47	Retail trade, except of motor vehicles and motorcycles	12,466	12,699	12,762	12,972	12,720	12,964
49-53	Transportation and storage	9,059	9,215	9,301	9,653	9,309	9,684
49	Land transport and transport via pipelines	3,039	2,994	2,992	3,299	3,000	3,350
50	Water transport	456	470	474	462	474	458
51	Air transport	1,188	1,247	1,314	1,421	1,300	1,415
52	Warehousing and support activities for transportation	3,764	3,872	3,886	3,836	3,907	3,820
53	Postal and courier activities	612	632	635	635	628	641
55-56	Accommodation and food service activities	10,103	10,361	10,709	11,050	10,633	10,963
55	Accommodation	5,663	5,636	5,780	5,902	5,689	5,792
56	Food and beverage service activities	4,440	4,725	4,929	5,148	4,944	5,171
58-63	Information and communication	5,446	5,856	6,265	6,808	6,226	6,727
58	Publishing activities	528	545	550	533	527	527
59	Motion picture, video and television programme production, sound recording and music publishing activities	264	291	398	504	365	464
60	Programming and broadcasting activities	419	469	459	599	473	614
61	Telecommunications	1,373	1,332	1,362	1,318	1,357	1,316
62	Computer programming, consultancy and related activities	2,378	2,683	2,949	3,124	2,952	3,109
63	Information service activities	484	536	547	730	552	697
64-66	Financial and insurance activities	7,679	8,088	8,201	8,699	8,234	8,705
64	Financial service activities, except insurance and pension funding	5,441	5,803	5,921	6,268	5,938	6,277
65	Insurance, reinsurance and pension funding, except compulsory social security	652	694	710	787	713	784

... Table 1. Full-time employment classified by period and economic activity

NACE division	Economic activity	Average 2013	Average 2014 (Revised)	August 2014	August 2015	September 2014 (revised)	September 2015
66	Activities auxiliary to financial services and insurance activities	1,586	1,591	1,570	1,644	1,583	1,644
68	Real estate activities	1,018	1,100	1,108	1,369	1,127	1,378
69-75	Professional, scientific and technical activities	7,693	8,391	8,360	9,416	8,501	9,526
69	Legal and accounting activities	2,575	2,796	2,813	3,204	2,876	3,233
70	Activities of head offices; management consultancy activities	1,977	2,133	2,098	2,271	2,110	2,288
71	Architectural and engineering activities; technical testing and analysis	1,549	1,640	1,630	1,822	1,685	1,860
72	Scientific research and development	33	24	24	26	23	25
73	Advertising and market research	989	1,176	1,183	1,378	1,193	1,405
74	Other professional, scientific and technical activities	519	564	551	626	552	625
75	Veterinary activities	51	58	61	89	62	90
77-82	Administrative and support service activities¹	9,339	10,963	12,159	13,642	12,189	13,803
77	Rental and leasing activities	1,070	1,119	1,143	1,191	1,163	1,199
78	Employment activities	1,774	2,528	3,451	3,261	3,390	3,281
79	Travel agency, tour operator and other reservation service and related activities	1,173	1,196	1,232	1,245	1,188	1,187
80	Security and investigation activities	1,447	1,477	1,485	2,124	1,509	2,120
81	Services to buildings and landscape activities	1,790	2,182	2,307	3,080	2,324	3,151
82	Office administrative, office support and other business support activities	2,085	2,461	2,541	2,741	2,615	2,865
84	Public administration and defence; compulsory social security²	11,877	14,032	14,090	12,714	14,177	12,836
85	Education	14,959	15,478	15,437	15,561	15,625	15,732
86-88	Human health and social work activities	13,080	13,791	13,795	14,435	13,972	14,441
86	Human health activities	8,223	8,720	8,703	9,171	8,868	9,175
87	Residential care activities	3,600	3,679	3,689	3,965	3,708	3,974
88	Social work activities without accommodation	1,257	1,392	1,403	1,299	1,396	1,292
90-93	Arts, entertainment and recreation	4,293	4,693	4,647	5,414	4,677	5,507
90	Creative, arts and entertainment activities	384	398	397	405	398	411
91	Libraries, archives, museums and other cultural activities	432	425	436	402	427	388
92	Gambling and betting activities	2,884	3,234	3,143	3,889	3,202	4,014
93	Sports activities and amusement and recreation activities	593	636	671	718	650	694
94-96	Other service activities	3,080	3,239	3,290	3,402	3,286	3,427
94	Activities of membership organisations	633	664	674	713	666	717
95	Repair of computers and personal and household goods	252	271	275	273	272	272
96	Other personal service activities	2,195	2,304	2,341	2,416	2,348	2,438
97-98	Activities of households as employers; undifferentiated goods- and services-producing activities of households for own use	9	16	16	19	19	20
97	Activities of households as employers of domestic personnel	9	16	16	19	19	20

... Table 1. Full-time employment classified by period and economic activity

NACE division	Economic activity	Average 2013	Average 2014 (Revised)	August 2014	August 2015	September 2014 (revised)	September 2015
98	Undifferentiated goods- and services-producing activities of private households for own use	-	-	-	-	-	-
99	Activities of extraterritorial organisations and bodies	197	217	218	221	219	222
01-99	Total Gainfully Occupied (including apprentices)	157,482	163,635	165,004	172,348	165,654	172,689
	Registered Unemployed	7,385	6,992	6,698	4,914	6,599	4,924
	Part I	6,888	6,544	6,266	4,388	6,120	4,413
	Part II	497	448	432	526	479	511
	Labour Supply (excluding part-time employment)	164,867	170,627	171,702	177,262	172,253	177,613

¹ Refer to methodological note 9.

² Refer to methodological note 6.

Table 2. Full-time employment classified by period, economic activity and category ...

NACE division	Economic activity	Category	Average 2013	Average 2014 (Revised)	August 2014	August 2015	September 2014 (revised)	September 2015 ³
01-03	Agriculture, forestry and fishing	Private Sector	1,864	1,846	1,842	1,878	1,847	1,873
		Public Sector	172	174	173	497	176	497
		Males	1,856	1,839	1,834	2,103	1,840	2,103
		Females	180	181	181	272	183	267
		Self-employed	1,457	1,436	1,431	1,410	1,430	1,410
		Employees	579	584	584	965	593	960
		Malta	1,570	1,547	1,544	1,908	1,547	1,906
		Gozo	466	473	471	467	476	464
		Total	2,036	2,020	2,015	2,375	2,023	2,370
05-09	Mining and quarrying	Private Sector	295	333	333	359	347	362
		Public Sector	-	-	-	-	-	-
		Males	273	308	310	321	319	323
		Females	22	25	23	38	28	39
		Self-employed	71	80	79	78	80	78
		Employees	224	253	254	281	267	284
		Malta	255	297	297	321	312	323
		Gozo	40	36	36	38	35	39
		Total	295	333	333	359	347	362
10-33	Manufacturing	Private Sector	20,231	20,368	20,376	20,534	20,388	20,494
		Public Sector	54	56	54	163	54	80
		Males	15,167	15,290	15,263	15,416	15,283	15,315
		Females	5,118	5,134	5,167	5,281	5,159	5,259
		Self-employed	1,392	1,421	1,426	1,483	1,430	1,482
		Employees	18,893	19,003	19,004	19,214	19,012	19,092
		Malta	19,371	19,475	19,482	19,711	19,491	19,592
		Gozo	914	949	948	986	951	982
		Total	20,285	20,424	20,430	20,697	20,442	20,574
35	Electricity, gas, steam and air conditioning supply ¹	Private Sector	13	15	17	29	6	10
		Public Sector	1,526	877	-	1	-	2
		Males	1,384	803	17	30	6	10
		Females	155	89	-	-	-	2
		Self-employed	5	6	7	11	4	6
		Employees	1,534	886	10	19	2	6
		Malta	1,489	862	17	29	6	11
		Gozo	50	30	-	1	-	1
		Total	1,539	892	17	30	6	12

... Table 2. Full-time employment classified by period, economic activity and category

NACE division	Economic activity	Category	Average 2013	Average 2014 (Revised)	August 2014	August 2015	September 2014 (revised)	September 2015 ³
36-39	Water supply; sewerage, waste management and remediation activities	Private Sector	336	342	346	332	346	338
		Public Sector	1,085	1,100	1,145	1,061	1,144	1,050
		Males	1,259	1,282	1,333	1,230	1,333	1,226
		Females	162	160	158	163	157	162
		Self-employed	78	77	76	77	76	78
		Employees	1,343	1,365	1,415	1,316	1,414	1,310
		Malta	1,260	1,291	1,343	1,281	1,339	1,276
		Gozo	161	151	148	112	151	112
		Total	1,421	1,442	1,491	1,393	1,490	1,388
41-43	Construction ²	Private Sector	8,813	8,989	8,949	9,223	8,999	9,243
		Public Sector	2,106	301	298	1,096	299	1,088
		Males	10,345	8,867	8,823	9,807	8,872	9,826
		Females	574	423	424	512	426	505
		Self-employed	2,700	2,735	2,754	2,794	2,766	2,797
		Employees	8,219	6,555	6,493	7,525	6,532	7,534
		Malta	9,976	8,331	8,299	9,382	8,345	9,396
		Gozo	943	959	948	937	953	935
		Total	10,919	9,290	9,247	10,319	9,298	10,331
45-47	Wholesale and retail trade; repair of motor vehicles and motorcycles	Private Sector	23,155	23,794	23,875	24,685	23,854	24,593
		Public Sector	-	-	-	87	-	88
		Males	15,654	15,986	16,031	16,529	16,024	16,461
		Females	7,501	7,808	7,844	8,243	7,830	8,220
		Self-employed	5,306	5,341	5,327	5,430	5,319	5,424
		Employees	17,849	18,453	18,548	19,342	18,535	19,257
		Malta	21,921	22,495	22,582	23,479	22,560	23,387
		Gozo	1,234	1,299	1,293	1,293	1,294	1,294
		Total	23,155	23,794	23,875	24,772	23,854	24,681
49-53	Transportation and storage	Private Sector	7,086	6,393	6,419	7,651	6,452	7,684
		Public Sector	1,973	2,822	2,882	2,002	2,857	2,000
		Males	7,544	7,618	7,651	7,943	7,674	7,979
		Females	1,515	1,597	1,650	1,710	1,635	1,705
		Self-employed	949	954	961	972	961	972
		Employees	8,110	8,261	8,340	8,681	8,348	8,712
		Malta	8,605	8,749	8,834	9,178	8,839	9,207
		Gozo	454	466	467	475	470	477
		Total	9,059	9,215	9,301	9,653	9,309	9,684

... Table 2. Full-time employment classified by period, economic activity and category

NACE division	Economic activity	Category	Average 2013	Average 2014 (Revised)	August 2014	August 2015	September 2014 (revised)	September 2015 ³
55-56	Accommodation and food service activities	Private Sector	10,103	10,361	10,709	11,050	10,633	10,963
		Public Sector	-	-	-	-	-	-
		Males	6,977	7,097	7,288	7,450	7,267	7,386
		Females	3,126	3,264	3,421	3,600	3,366	3,577
		Self-employed	1,158	1,203	1,210	1,238	1,210	1,231
		Employees	8,945	9,158	9,499	9,812	9,423	9,732
		Malta	9,367	9,547	9,861	10,210	9,801	10,139
		Gozo	736	814	848	840	832	824
		Total	10,103	10,361	10,709	11,050	10,633	10,963
58-63	Information and communication	Private Sector	4,942	5,340	5,741	6,139	5,702	6,106
		Public Sector	504	516	524	669	524	621
		Males	3,934	4,215	4,525	4,885	4,492	4,794
		Females	1,512	1,641	1,740	1,923	1,734	1,933
		Self-employed	248	277	290	328	294	327
		Employees	5,198	5,579	5,975	6,480	5,932	6,400
		Malta	5,260	5,628	6,014	6,543	5,966	6,452
		Gozo	186	228	251	265	260	275
		Total	5,446	5,856	6,265	6,808	6,226	6,727
64-66	Financial and insurance activities	Private Sector	7,003	7,375	7,476	7,907	7,509	7,922
		Public Sector	676	713	725	792	725	783
		Males	3,747	4,004	4,065	4,283	4,081	4,288
		Females	3,932	4,084	4,136	4,416	4,153	4,417
		Self-employed	83	94	95	104	95	104
		Employees	7,596	7,994	8,106	8,595	8,139	8,601
		Malta	7,377	7,780	7,890	8,386	7,924	8,394
		Gozo	302	308	311	313	310	311
		Total	7,679	8,088	8,201	8,699	8,234	8,705
68	Real estate activities	Private Sector	956	1,040	1,047	1,095	1,066	1,103
		Public Sector	62	60	61	274	61	275
		Males	672	723	728	957	741	966
		Females	346	377	380	412	386	412
		Self-employed	303	333	336	372	342	376
		Employees	715	767	772	997	785	1,002
		Malta	933	1,017	1,027	1,283	1,044	1,293
		Gozo	85	83	81	86	83	85
		Total	1,018	1,100	1,108	1,369	1,127	1,378

... Table 2. Full-time employment classified by period, economic activity and category

NACE division	Economic activity	Category	Average 2013	Average 2014 (Revised)	August 2014	August 2015	September 2014 (revised)	September 2015 ³
69-75	Professional, scientific and technical activities	Private Sector	7,653	8,337	8,303	9,308	8,444	9,418
		Public Sector	40	54	57	108	57	108
		Males	4,435	4,845	4,827	5,384	4,900	5,441
		Females	3,258	3,546	3,533	4,032	3,601	4,085
		Self-employed	1,189	1,287	1,303	1,464	1,320	1,477
		Employees	6,504	7,104	7,057	7,952	7,181	8,049
		Malta	7,419	8,090	8,060	9,092	8,192	9,194
		Gozo	274	301	300	324	309	332
		Total	7,693	8,391	8,360	9,416	8,501	9,526
77-82	Administrative and support service activities ¹	Private Sector	8,484	9,396	9,719	10,649	9,761	10,809
		Public Sector	855	1,567	2,440	2,993	2,428	2,994
		Males	5,685	6,740	7,668	8,661	7,699	8,751
		Females	3,654	4,223	4,491	4,981	4,490	5,052
		Self-employed	743	791	802	891	830	908
		Employees	8,596	10,172	11,357	12,751	11,359	12,895
		Malta	9,008	10,577	11,755	13,121	11,773	13,282
		Gozo	331	386	404	521	416	521
		Total	9,339	10,963	12,159	13,642	12,189	13,803
84	Public administration and defence; compulsory social security ²	Private Sector	-	-	-	-	-	-
		Public Sector	11,877	14,032	14,090	12,714	14,177	12,836
		Males	8,247	9,967	9,984	8,494	10,052	8,591
		Females	3,630	4,065	4,106	4,220	4,125	4,245
		Self-employed	-	-	-	-	-	-
		Employees	11,877	14,032	14,090	12,714	14,177	12,836
		Malta	11,064	13,161	13,213	11,817	13,300	11,938
		Gozo	813	871	877	897	877	898
		Total	11,877	14,032	14,090	12,714	14,177	12,836
85	Education	Private Sector	4,493	4,699	4,685	4,692	4,785	4,796
		Public Sector	10,466	10,779	10,752	10,869	10,840	10,936
		Males	4,986	5,005	5,006	4,877	5,019	4,870
		Females	9,973	10,473	10,431	10,684	10,606	10,862
		Self-employed	306	300	298	316	301	313
		Employees	14,653	15,178	15,139	15,245	15,324	15,419
		Malta	13,791	14,222	14,194	14,361	14,375	14,520
		Gozo	1,168	1,256	1,243	1,200	1,250	1,212
		Total	14,959	15,478	15,437	15,561	15,625	15,732

... Table 2. Full-time employment classified by period, economic activity and category

NACE division	Economic activity	Category	Average 2013	Average 2014 (Revised)	August 2014	August 2015	September 2014 (revised)	September 2015 ³
86-88	Human health and social work activities	Private Sector	3,190	3,493	3,536	3,957	3,546	3,972
		Public Sector	9,890	10,298	10,259	10,478	10,426	10,469
		Males	5,154	5,351	5,351	5,395	5,395	5,401
		Females	7,926	8,440	8,444	9,040	8,577	9,040
		Self-employed	303	326	326	347	328	348
		Employees	12,777	13,465	13,469	14,088	13,644	14,093
		Malta	12,137	12,799	12,806	13,399	12,952	13,401
		Gozo	943	992	989	1,036	1,020	1,040
		Total	13,080	13,791	13,795	14,435	13,972	14,441
90-93	Arts, entertainment and recreation	Private Sector	3,677	4,093	4,044	4,866	4,089	4,966
		Public Sector	616	600	603	548	588	541
		Males	2,854	3,058	3,009	3,556	3,044	3,619
		Females	1,439	1,635	1,638	1,858	1,633	1,888
		Self-employed	415	422	429	447	441	451
		Employees	3,878	4,271	4,218	4,967	4,236	5,056
		Malta	4,123	4,519	4,473	5,212	4,498	5,304
		Gozo	170	174	174	202	179	203
		Total	4,293	4,693	4,647	5,414	4,677	5,507
94-96	Other service activities	Private Sector	3,065	3,224	3,276	3,361	3,271	3,386
		Public Sector	15	15	14	41	15	41
		Males	1,397	1,458	1,492	1,553	1,477	1,556
		Females	1,683	1,781	1,798	1,849	1,809	1,871
		Self-employed	1,395	1,490	1,522	1,596	1,531	1,614
		Employees	1,685	1,749	1,768	1,806	1,755	1,813
		Malta	2,946	3,088	3,137	3,241	3,132	3,258
		Gozo	134	151	153	161	154	169
		Total	3,080	3,239	3,290	3,402	3,286	3,427
97-98	Activities of households as employers; undifferentiated goods- and services-producing activities of households for own use	Private Sector	9	16	16	19	19	20
		Public Sector	-	-	-	-	-	-
		Males	5	8	7	9	9	9
		Females	4	8	9	10	10	11
		Self-employed	1	4	4	5	4	5
		Employees	8	12	12	14	15	15
		Malta	7	14	14	17	17	18
		Gozo	2	2	2	2	2	2
		Total	9	16	16	19	19	20

... Table 2. Full-time employment classified by period, economic activity and category

NACE division	Economic activity	Category	Average 2013	Average 2014 (Revised)	August 2014	August 2015	September 2014 (revised)	September 2015 ³
99	Activities of extraterritorial organisations and bodies	Private Sector	197	217	218	221	219	222
		Public Sector	-	-	-	-	-	-
		Males	129	144	144	141	144	142
		Females	68	73	74	80	75	80
		Self-employed	-	-	-	4	-	4
		Employees	197	217	218	217	219	218
		Malta	197	217	218	221	219	222
		Gozo	-	-	-	-	-	-
		Total	197	217	218	221	219	222
01-99	Total Gainfully Occupied (including apprentices)	Private Sector	115,565	119,671	120,927	127,955	121,283	128,280
		Public Sector	41,917	43,964	44,077	44,393	44,371	44,409 ⁴
		Males	101,704	104,608	105,356	109,024	105,671	109,057
		Females	55,778	59,027	59,648	63,324	59,983	63,632
		Self-employed	18,102	18,577	18,676	19,367	18,762	19,405
		Employees	139,380	145,058	146,328	152,981	146,892	153,284
		Malta	148,076	153,706	155,060	162,192	155,632	162,513
		Gozo	9,406	9,929	9,944	10,156	10,022	10,176
		Total	157,482	163,635	165,004	172,348	165,654	172,689

¹ Refer to methodological note 9.

² Refer to methodological note 6.

³ As from January 2015, data for the public sector takes into account the revisions to the economic activity classification of government entities, departments and ministries. For further details refer to methodological note 7.

⁴ Public sector employment in 2015 stood at 44,409, with the full-time equivalent (FTE) calculated at 41,823.

Table 3. Part-time employment classified by period and economic activity ...

NACE division	Economic activity	Average 2013	Average 2014 (Revised)	August 2014	August 2015	September 2014 (revised)	September 2015
01-03	Agriculture, forestry and fishing	2,227	2,231	2,237	2,210	2,235	2,208
01	Crop and animal production, hunting and related service activities	1,567	1,575	1,576	1,559	1,573	1,560
02	Forestry and logging	-	-	-	-	-	-
03	Fishing and aquaculture	660	656	661	651	662	648
05-09	Mining and quarrying	30	31	31	27	30	27
05	Mining of coal and lignite	-	-	-	-	-	-
06	Extraction of crude petroleum and natural gas	-	-	-	-	-	-
07	Mining of metal ores	-	-	-	-	-	-
08	Other mining and quarrying	26	29	29	26	28	26
09	Mining support service activities	4	2	2	1	2	1
10-33	Manufacturing	2,760	2,890	2,942	3,027	2,923	2,991
10	Manufacture of food products	781	813	839	816	833	816
11	Manufacture of beverages	73	74	79	76	75	72
12	Manufacture of tobacco products	2	2	2	3	2	3
13	Manufacture of textiles	40	36	36	33	36	33
14	Manufacture of wearing apparel	92	97	101	121	103	104
15	Manufacture of leather and related products	10	10	10	8	10	9
16	Manufacture of wood and of products of wood and cork, except furniture; manufacture of articles of straw and plaiting materials	49	56	58	61	56	61
17	Manufacture of paper and paper products	22	20	18	24	18	24
18	Printing and reproduction of recorded media	163	156	153	156	156	155
19	Manufacture of coke and refined petroleum products	1	1	1	2	1	2
20	Manufacture of chemicals and chemical products	35	43	39	55	43	55
21	Manufacture of basic pharmaceutical products and pharmaceutical preparations	34	29	29	36	29	33
22	Manufacture of rubber and plastic products	118	111	113	126	105	124
23	Manufacture of other non-metallic mineral products	148	143	138	137	139	137
24	Manufacture of basic metals	28	36	35	40	36	46
25	Manufacture of fabricated metal products, except machinery and equipment	235	241	239	240	237	237
26	Manufacture of computer, electronic and optical products	69	72	73	76	74	74
27	Manufacture of electrical equipment	73	70	76	74	77	79
28	Manufacture of machinery and equipment n.e.c.	32	42	45	49	45	48
29	Manufacture of motor vehicles, trailers and semi-trailers	76	77	85	96	76	98
30	Manufacture of other transport equipment	20	31	28	36	29	39
31	Manufacture of furniture	345	342	336	337	335	338
32	Other manufacturing	186	238	257	231	254	221
33	Repair and installation of machinery and equipment	128	150	152	194	154	183
35	Electricity, gas, steam and air conditioning supply	7	8	5	6	1	1
36-39	Water supply; sewerage, waste management and remediation activities	179	170	170	213	168	204
36	Water collection, treatment and supply	22	23	26	78	25	69
37	Sewerage	3	3	3	3	3	3
38	Waste collection, treatment and disposal activities; materials recovery	147	137	135	126	134	126
39	Remediation activities and other waste management services	7	7	6	6	6	6

... Table 3. Part-time employment classified by period and economic activity

NACE division	Economic activity	Average 2013	Average 2014 (Revised)	August 2014	August 2015	September 2014 (revised)	September 2015
41-43	Construction	1,492	1,514	1,530	1,588	1,513	1,574
41	Construction of buildings	416	424	431	464	419	437
42	Civil engineering	64	64	68	72	67	77
43	Specialised construction activities	1,012	1,026	1,031	1,052	1,027	1,060
45-47	Wholesale and retail trade; repair of motor vehicles and motorcycles	9,302	9,765	9,770	10,240	9,789	10,262
45	Wholesale and retail trade and repair of motor vehicles and motorcycles	602	637	645	654	648	649
46	Wholesale trade, except of motor vehicles and motorcycles	2,160	2,276	2,304	2,449	2,303	2,448
47	Retail trade, except of motor vehicles and motorcycles	6,540	6,852	6,821	7,137	6,838	7,165
49-53	Transportation and storage	2,022	2,168	2,262	2,468	2,222	2,458
49	Land transport and transport via pipelines	1,040	1,100	1,112	1,345	1,105	1,340
50	Water transport	122	136	144	155	139	144
51	Air transport	202	246	309	353	294	356
52	Warehousing and support activities for transportation	447	474	484	409	476	398
53	Postal and courier activities	211	212	213	206	208	220
55-56	Accommodation and food service activities	9,596	9,855	10,519	10,844	10,138	10,642
55	Accommodation	3,530	3,579	3,866	3,741	3,680	3,604
56	Food and beverage service activities	6,066	6,276	6,653	7,103	6,458	7,038
58-63	Information and communication	1,374	1,267	1,273	1,384	1,255	1,398
58	Publishing activities	218	128	124	141	123	158
59	Motion picture, video and television programme production, sound recording and music publishing activities	332	252	243	258	255	263
60	Programming and broadcasting activities	266	283	283	266	282	268
61	Telecommunications	105	105	109	189	114	182
62	Computer programming, consultancy and related activities	427	468	478	494	453	488
63	Information service activities	26	31	36	36	28	39
64-66	Financial and insurance activities	779	906	949	1,111	951	1,070
64	Financial service activities, except insurance and pension funding	381	483	502	639	532	604
65	Insurance, reinsurance and pension funding, except compulsory social security	135	162	173	181	163	179
66	Activities auxiliary to financial services and insurance activities	263	261	274	291	256	287
68	Real estate activities	541	585	578	561	578	563
69-75	Professional, scientific and technical activities	3,377	3,436	3,425	3,720	3,411	3,721
69	Legal and accounting activities	781	839	926	1,010	848	940
70	Activities of head offices; management consultancy activities	1,232	1,257	1,199	1,270	1,218	1,281
71	Architectural and engineering activities; technical testing and analysis	475	513	511	590	515	607
72	Scientific research and development	21	20	22	28	22	28
73	Advertising and market research	545	445	417	430	430	441
74	Other professional, scientific and technical activities	300	343	332	368	361	400
75	Veterinary activities	23	19	18	24	17	24

... Table 3. Part-time employment classified by period and economic activity

NACE division	Economic activity	Average 2013	Average 2014 (Revised)	August 2014	August 2015	September 2014 (revised)	September 2015
77-82	Administrative and support service activities	5,445	5,708	5,873	5,873	5,913	5,867
77	Rental and leasing activities	535	550	574	586	558	578
78	Employment activities	1,596	1,423	1,510	1,493	1,486	1,418
79	Travel agency, tour operator and other reservation service and related activities	554	548	549	579	550	585
80	Security and investigation activities	1,039	1,202	1,199	1,318	1,246	1,326
81	Services to buildings and landscape activities	1,107	1,365	1,419	1,159	1,447	1,212
82	Office administrative, office support and other business support activities	614	620	622	738	626	748
84	Public administration and defence; compulsory social security	2,113	2,762	3,810	3,834	3,601	3,352
85	Education	5,319	5,764	5,799	5,862	5,557	5,492
86-88	Human health and social work activities	3,157	3,373	3,489	3,804	3,438	3,768
86	Human health activities	1,103	1,152	1,166	1,239	1,184	1,247
87	Residential care activities	1,469	1,581	1,589	1,764	1,593	1,789
88	Social work activities without accommodation	585	640	734	801	661	732
90-93	Arts, entertainment and recreation	1,495	1,585	1,702	1,870	1,632	1,866
90	Creative, arts and entertainment activities	408	424	421	477	413	473
91	Libraries, archives, museums and other cultural activities	107	104	120	122	114	126
92	Gambling and betting activities	335	360	351	427	363	447
93	Sports activities and amusement and recreation activities	645	697	810	844	742	820
94-96	Other service activities	1,926	2,047	2,039	2,174	2,031	2,177
94	Activities of membership organisations	508	532	537	567	540	560
95	Repair of computers and personal and household goods	150	154	156	148	155	150
96	Other personal service activities	1,268	1,361	1,346	1,459	1,336	1,467
97-98	Activities of households as employers; undifferentiated goods- and services-producing activities of households for own use	12	16	17	17	18	20
97	Activities of households as employers of domestic personnel	10	14	15	15	16	18
98	Undifferentiated goods- and services-producing activities of private households for own use	2	2	2	2	2	2
99	Activities of extraterritorial organisations and bodies	21	25	25	23	24	25
01-99	Total	53,174	56,106	58,445	60,856	57,428	59,686

Table 4. Part-time employment classified by period, economic activity, part-time job type and category ...

NACE division	Economic activity	Type of part-time job	Category	Average 2013	Average 2014 (Revised)	August 2014	August 2015	September 2014 (revised)	September 2015
01-03	Agriculture, forestry and fishing	Part-timers holding a full-time job	Males	1,235	1,233	1,238	1,213	1,240	1,209
			Females	61	61	60	62	60	62
			Malta	997	992	993	974	993	969
			Gozo	299	302	305	301	307	302
			Total	1,296	1,294	1,298	1,275	1,300	1,271
			Total	1,296	1,294	1,298	1,275	1,300	1,271
		Part-time as a primary job	Males	774	772	776	771	769	771
			Females	157	165	163	164	166	166
			Malta	775	778	778	776	775	776
			Gozo	156	159	161	159	160	161
			Total	931	937	939	935	935	937
			Total	931	937	939	935	935	937
		Total	Total	2,227	2,231	2,237	2,210	2,235	2,208
		05-09	Mining and quarrying	Part-timers holding a full-time job	Males	13	14	14	13
Females	-				-	-	-	-	-
Malta	4				3	3	2	3	2
Gozo	9				11	11	11	11	11
Total	13			14	14	13	14	13	
Part-time as a primary job	Males			14	14	14	11	13	11
	Females			3	3	3	3	3	3
	Malta			13	14	14	11	13	11
	Gozo			4	3	3	3	3	3
	Total			17	17	17	14	16	14
	Total	17	17	17	14	16	14		
Total	Total	30	31	31	27	30	27		
10-33	Manufacturing	Part-timers holding a full-time job	Males	874	913	938	970	938	967
			Females	172	203	211	205	209	207
			Malta	937	1,003	1,039	1,057	1,038	1,057
			Gozo	109	113	110	118	109	117
			Total	1,046	1,116	1,149	1,175	1,147	1,174
			Total	1,046	1,116	1,149	1,175	1,147	1,174
		Part-time as a primary job	Males	879	914	923	943	911	925
			Females	835	860	870	909	865	892
			Malta	1,598	1,657	1,662	1,725	1,657	1,691
			Gozo	116	117	131	127	119	126
			Total	1,714	1,774	1,793	1,852	1,776	1,817
			Total	1,714	1,774	1,793	1,852	1,776	1,817
			Total	2,760	2,890	2,942	3,027	2,923	2,991
			Total	2,760	2,890	2,942	3,027	2,923	2,991
35	Electricity, gas, steam and air conditioning supply	Part-timers holding a full-time job	Males	4	3	2	3	-	-
			Females	-	-	-	-	-	-
			Malta	4	3	2	3	-	-
			Gozo	-	-	-	-	-	-
		Total	4	3	2	3	-	-	
		Part-time as a primary job	Males	2	3	2	2	-	-
			Females	1	2	1	1	1	1
			Malta	3	5	3	3	1	1
			Gozo	-	-	-	-	-	-
			Total	3	5	3	3	1	1
Total	3		5	3	3	1	1		
Total	7	8	5	6	1	1			

... Table 4. Part-time employment classified by period, economic activity, part-time job type and category

NACE division	Economic activity	Type of part-time job	Category	Average 2013	Average 2014 (Revised)	August 2014	August 2015	September 2014 (revised)	September 2015
36-39	Water supply; sewerage, waste management and remediation activities	Part-timers holding a full-time job	Males	50	51	51	52	51	51
			Females	7	7	7	12	7	9
			Malta	50	52	52	58	52	54
			Gozo	7	6	6	6	6	6
			Total	57	58	58	64	58	60
			Total	57	58	58	64	58	60
		Part-time as a primary job	Males	74	70	72	80	70	79
			Females	48	42	40	69	40	65
			Malta	113	106	107	144	105	139
			Gozo	9	6	5	5	5	5
			Total	122	112	112	149	110	144
			Total	122	112	112	149	110	144
Total			179	170	170	213	168	204	
41-43	Construction	Part-timers holding a full-time job	Males	723	721	720	747	719	751
			Females	44	52	57	76	56	78
			Malta	587	599	600	650	598	655
			Gozo	180	174	177	173	177	174
			Total	767	773	777	823	775	829
			Total	767	773	777	823	775	829
		Part-time as a primary job	Males	572	570	580	586	572	571
			Females	153	171	173	179	166	174
			Malta	626	633	641	656	628	637
			Gozo	99	108	112	109	110	108
			Total	725	741	753	765	738	745
			Total	725	741	753	765	738	745
Total			1,492	1,514	1,530	1,588	1,513	1,574	
45-47	Wholesale and retail trade; repair of motor vehicles and motorcycles	Part-timers holding a full-time job	Males	2,070	2,153	2,163	2,224	2,174	2,242
			Females	981	1,055	1,040	1,214	1,058	1,236
			Malta	2,773	2,919	2,913	3,135	2,940	3,169
			Gozo	278	289	290	303	292	309
			Total	3,051	3,208	3,203	3,438	3,232	3,478
			Total	3,051	3,208	3,203	3,438	3,232	3,478
		Part-time as a primary job	Males	1,905	1,976	2,024	2,097	1,995	2,060
			Females	4,346	4,581	4,543	4,705	4,562	4,724
			Malta	5,836	6,105	6,116	6,339	6,106	6,324
			Gozo	415	452	451	463	451	460
			Total	6,251	6,557	6,567	6,802	6,557	6,784
			Total	6,251	6,557	6,567	6,802	6,557	6,784
Total			9,302	9,765	9,770	10,240	9,789	10,262	
49-53	Transportation and storage	Part-timers holding a full-time job	Males	684	774	785	949	788	938
			Females	112	118	128	132	121	136
			Malta	737	834	854	1,013	850	1,008
			Gozo	59	58	59	68	59	66
			Total	796	892	913	1,081	909	1,074
			Total	796	892	913	1,081	909	1,074
		Part-time as a primary job	Males	793	824	864	924	846	930
			Females	433	452	485	463	467	454
			Malta	1,161	1,209	1,277	1,311	1,244	1,309
			Gozo	65	67	72	76	69	75
			Total	1,226	1,276	1,349	1,387	1,313	1,384
			Total	1,226	1,276	1,349	1,387	1,313	1,384
Total			2,022	2,168	2,262	2,468	2,222	2,458	

... Table 4. Part-time employment classified by period, economic activity, part-time job type and category

NACE division	Economic activity	Type of part-time job	Category	Average 2013	Average 2014 (Revised)	August 2014	August 2015	September 2014 (revised)	September 2015
55-56	Accommodation and food service activities	Part-timers holding a full-time job	Males	2,314	2,348	2,421	2,553	2,407	2,519
			Females	878	931	977	1,064	950	1,064
			Malta	2,921	3,020	3,122	3,333	3,089	3,306
			Gozo	271	259	276	284	268	277
			Total	3,192	3,279	3,398	3,617	3,357	3,583
			Total	3,192	3,279	3,398	3,617	3,357	3,583
		Part-time as a primary job	Males	3,001	3,077	3,325	3,452	3,163	3,395
			Females	3,403	3,499	3,796	3,775	3,618	3,664
			Malta	5,917	6,096	6,522	6,627	6,236	6,494
			Gozo	487	480	599	600	545	565
			Total	6,404	6,576	7,121	7,227	6,781	7,059
			Total	6,404	6,576	7,121	7,227	6,781	7,059
		Total		9,596	9,855	10,519	10,844	10,138	10,642
		58-63	Information and communication	Part-timers holding a full-time job	Males	519	466	470	505
Females	190				166	160	175	163	178
Malta	677				601	598	644	601	648
Gozo	32				31	32	36	31	35
Total	709				632	630	680	632	683
Total	709				632	630	680	632	683
Part-time as a primary job	Males			364	353	359	380	337	396
	Females			301	282	284	324	286	319
	Malta			643	615	625	672	603	683
	Gozo			22	20	18	32	20	32
	Total			665	635	643	704	623	715
	Total			665	635	643	704	623	715
Total				1,374	1,267	1,273	1,384	1,255	1,398
64-66	Financial and insurance activities			Part-timers holding a full-time job	Males	188	207	203	279
		Females	83		101	103	117	108	124
		Malta	263		299	296	389	323	391
		Gozo	8		9	10	7	8	7
		Total	271		308	306	396	331	398
		Total	271		308	306	396	331	398
		Part-time as a primary job	Males	177	201	219	276	202	244
			Females	331	397	424	439	418	428
			Malta	495	585	628	704	610	661
			Gozo	13	13	15	11	10	11
			Total	508	598	643	715	620	672
			Total	508	598	643	715	620	672
		Total		779	906	949	1,111	951	1,070
		68	Real estate activities	Part-timers holding a full-time job	Males	158	183	184	181
Females	111				115	110	84	109	86
Malta	222				243	239	211	237	222
Gozo	47				55	55	54	53	54
Total	269				298	294	265	290	276
Total	269				298	294	265	290	276
Part-time as a primary job	Males			95	104	105	109	106	104
	Females			177	183	179	187	182	183
	Malta			238	254	251	262	253	253
	Gozo			34	33	33	34	35	34
	Total			272	287	284	296	288	287
	Total			272	287	284	296	288	287
Total				541	585	578	561	578	563

... Table 4. Part-time employment classified by period, economic activity, part-time job type and category

NACE division	Economic activity	Type of part-time job	Category	Average 2013	Average 2014 (Revised)	August 2014	August 2015	September 2014 (revised)	September 2015
69-75	Professional, scientific and technical activities	Part-timers holding a full-time job	Males	972	996	990	1,085	1,019	1,107
			Females	574	545	545	600	556	597
			Malta	1,464	1,458	1,451	1,598	1,491	1,614
			Gozo	82	83	84	87	84	90
			Total	1,546	1,541	1,535	1,685	1,575	1,704
			Total	1,546	1,541	1,535	1,685	1,575	1,704
		Part-time as a primary job	Males	736	779	768	882	762	873
			Females	1,095	1,116	1,122	1,153	1,074	1,144
			Malta	1,778	1,836	1,822	1,950	1,776	1,935
			Gozo	53	59	68	85	60	82
			Total	1,831	1,895	1,890	2,035	1,836	2,017
			Total	1,831	1,895	1,890	2,035	1,836	2,017
Total		3,377	3,436	3,425	3,720	3,411	3,721		
77-82	Administrative and support service activities	Part-timers holding a full-time job	Males	1,886	1,910	1,920	1,990	1,954	1,997
			Females	727	663	679	746	683	754
			Malta	2,545	2,490	2,513	2,640	2,545	2,657
			Gozo	68	83	86	96	92	94
			Total	2,613	2,573	2,599	2,736	2,637	2,751
			Total	2,613	2,573	2,599	2,736	2,637	2,751
		Part-time as a primary job	Males	1,203	1,338	1,421	1,396	1,418	1,376
			Females	1,629	1,797	1,853	1,741	1,858	1,740
			Malta	2,755	3,046	3,175	3,025	3,172	3,003
			Gozo	77	89	99	112	104	113
			Total	2,832	3,135	3,274	3,137	3,276	3,116
			Total	2,832	3,135	3,274	3,137	3,276	3,116
Total		5,445	5,708	5,873	5,873	5,913	5,867		
84	Public administration and defence; compulsory social security	Part-timers holding a full-time job	Males	361	407	442	471	442	463
			Females	389	579	764	813	798	700
			Malta	665	877	1,064	1,145	1,098	1,046
			Gozo	85	109	142	139	142	117
			Total	750	986	1,206	1,284	1,240	1,163
			Total	750	986	1,206	1,284	1,240	1,163
		Part-time as a primary job	Males	296	459	714	736	616	609
			Females	1,067	1,317	1,890	1,814	1,745	1,580
			Malta	1,213	1,613	2,388	2,304	2,162	2,001
			Gozo	150	163	216	246	199	188
			Total	1,363	1,776	2,604	2,550	2,361	2,189
			Total	1,363	1,776	2,604	2,550	2,361	2,189
Total		2,113	2,762	3,810	3,834	3,601	3,352		
85	Education	Part-timers holding a full-time job	Males	1,451	1,529	1,490	1,513	1,463	1,478
			Females	1,313	1,457	1,425	1,478	1,409	1,390
			Malta	2,622	2,843	2,781	2,839	2,740	2,732
			Gozo	142	143	134	152	132	136
			Total	2,764	2,986	2,915	2,991	2,872	2,868
			Total	2,764	2,986	2,915	2,991	2,872	2,868
		Part-time as a primary job	Males	952	1,041	1,085	1,064	1,013	984
			Females	1,603	1,737	1,799	1,807	1,672	1,640
			Malta	2,460	2,679	2,786	2,757	2,591	2,523
			Gozo	95	99	98	114	94	101
			Total	2,555	2,778	2,884	2,871	2,685	2,624
			Total	2,555	2,778	2,884	2,871	2,685	2,624
Total		5,319	5,764	5,799	5,862	5,557	5,492		

... Table 4. Part-time employment classified by period, economic activity, part-time job type and category

NACE division	Economic activity	Type of part-time job	Category	Average 2013	Average 2014 (Revised)	August 2014	August 2015	September 2014 (revised)	September 2015
86-88	Human health and social work activities	Part-timers holding a full-time job	Males	547	549	553	575	551	569
			Females	803	833	846	958	825	940
			Malta	1,265	1,294	1,316	1,438	1,289	1,413
			Gozo	85	88	83	95	87	96
			Total	1,350	1,382	1,399	1,533	1,376	1,509
			Total	1,350	1,382	1,399	1,533	1,376	1,509
		Part-time as a primary job	Males	344	340	346	368	341	371
			Females	1,463	1,651	1,744	1,903	1,721	1,888
			Malta	1,721	1,886	1,977	2,130	1,953	2,115
			Gozo	86	105	113	141	109	144
			Total	1,807	1,991	2,090	2,271	2,062	2,259
			Total	1,807	1,991	2,090	2,271	2,062	2,259
Total	3,157	3,373	3,489	3,804	3,438	3,768			
90-93	Arts, entertainment and recreation	Part-timers holding a full-time job	Males	447	466	472	503	476	526
			Females	208	226	227	241	228	241
			Malta	616	648	658	703	664	726
			Gozo	39	44	41	41	40	41
			Total	655	692	699	744	704	767
			Total	655	692	699	744	704	767
		Part-time as a primary job	Males	362	404	466	539	436	519
			Females	478	489	537	587	492	580
			Malta	816	873	981	1,096	905	1,071
			Gozo	24	20	22	30	23	28
			Total	840	893	1,003	1,126	928	1,099
			Total	840	893	1,003	1,126	928	1,099
Total	1,495	1,585	1,702	1,870	1,632	1,866			
94-96	Other service activities	Part-timers holding a full-time job	Males	342	352	349	375	340	366
			Females	217	248	242	276	243	282
			Malta	513	553	545	604	536	601
			Gozo	46	47	46	47	47	47
			Total	559	600	591	651	583	648
			Total	559	600	591	651	583	648
		Part-time as a primary job	Males	408	417	435	448	433	443
			Females	959	1,030	1,013	1,075	1,015	1,086
			Malta	1,243	1,323	1,321	1,412	1,328	1,418
			Gozo	124	124	127	111	120	111
			Total	1,367	1,447	1,448	1,523	1,448	1,529
			Total	1,367	1,447	1,448	1,523	1,448	1,529
Total	1,926	2,047	2,039	2,174	2,031	2,177			
97-98	Activities of households as employers; undifferentiated goods- and services-producing activities of households for own use	Part-timers holding a full-time job	Males	3	3	3	3	3	4
			Females	1	2	2	2	2	2
			Malta	2	3	3	3	3	4
			Gozo	2	2	2	2	2	2
			Total	4	5	5	5	5	6
			Total	4	5	5	5	5	6
		Part-time as a primary job	Males	1	2	3	4	3	5
			Females	7	9	9	8	10	9
			Malta	7	10	11	11	12	13
			Gozo	1	1	1	1	1	1
			Total	8	11	12	12	13	14
			Total	8	11	12	12	13	14
Total	12	16	17	17	18	20			

... Table 4. Part-time employment classified by period, economic activity, part-time job type and category

NACE division	Economic activity	Type of part-time job	Category	Average 2013	Average 2014 (Revised)	August 2014	August 2015	September 2014 (revised)	September 2015
99	Activities of extraterritorial organisations and bodies	Part-timers holding a full-time job	Males	1	2	2	1	1	1
			Females	2	2	2	1	2	1
			Malta	3	4	4	2	3	2
			Gozo	-	-	-	-	-	-
			Total	3	4	4	2	3	2
		Part-time as a primary job	Males	3	4	4	3	4	4
			Females	15	17	17	18	17	19
			Malta	18	21	21	21	21	23
			Gozo	-	-	-	-	-	-
			Total	18	21	21	21	21	23
Total			21	25	25	23	24	25	
01-99	Total	Part-timers holding a full-time job	Males	14,842	15,280	15,410	16,205	15,453	16,170
			Females	6,873	7,364	7,585	8,256	7,587	8,087
			Malta	19,867	20,738	21,046	22,441	21,093	22,276
			Gozo	1,848	1,906	1,949	2,020	1,947	1,981
			Total	21,715	22,644	22,995	24,461	23,040	24,257
		Part-time as a primary job	Males	12,955	13,662	14,505	15,071	14,010	14,670
			Females	18,504	19,800	20,945	21,324	20,378	20,759
			Malta	29,429	31,344	33,106	33,936	32,151	33,081
			Gozo	2,030	2,118	2,344	2,459	2,237	2,348
			Total	31,459	33,462	35,450	36,395	34,388	35,429
Total part-timers			53,174	56,106	58,445	60,856	57,428	59,686	

Methodological Notes

1. The data provided in this release, including the relevant classifications, is based on administrative records held at the Employment and Training Corporation (ETC). The information contained in this release may be subject to revision. Monthly data is revised in the subsequent year.
2. The National Statistics Office publishes, on a quarterly basis, another set of statistics on employment and unemployment based on the Labour Force Survey (LFS). When compiling LFS statistics, the NSO adopts the International Labour Organisation (ILO) definition, an internationally agreed definition on employment and unemployment. This definition has also been adopted by Eurostat and is used by all EU Member States. More details regarding the methodology used for the compilation of employment and unemployment statistics from the LFS may be found in quarterly LFS news releases.

Since ETC records and LFS results measure two different facets of employment and unemployment, these are not comparable. Users are therefore cautioned that these two sets of statistics should not be used interchangeably.

3. Full-time and part-time status is determined by the employer's declaration (or that made by a self-employed person) in the engagement form which is required to be sent to the ETC upon commencement of employment.
4. Apprentices are included under their respective economic activity.

5. Definitions:

- **Labour Supply:** Full-time gainfully occupied population and the registered unemployed population.
- **Apprentices, trainees and students:** Includes apprentices, trainees, Junior College and University students in the summer work-phase, undergraduate trainees, and trainees with fixed contracts.
- **Regional employment:** Data on Malta/Gozo employment differs on the basis of economic sector. Accordingly, the data of the private sector depends on employee residence, whereas the data of the public sector depends on employer information of location of its employees.
- **Full-time equivalent (FTE):** Employment in full-time equivalent is a conversion method used to measure the number of employees according to the number of hours worked. When using FTE a full-time employee working a 40 hour week is equivalent to 1.0, whereas a person who works 20 hours per week is equivalent to 0.5. Table 2 of this release includes persons who work full-time, persons on a full-time with reduced hours basis and full-time employees who are on unpaid leave. When converting these figures into FTE, full-time employees are considered as 1 whereas persons working full-time with reduced hours or who are on unpaid leave are considered according to the hours worked. FTE data is currently available in respect of public sector employment and is based on the administrative records of the Public Administration and Human Resources Office (PAHRO) within the Office of the Prime Minister. FTE information for the private sector is not available.
- **Part 1 of the unemployment register:** Persons registering under Part 1 are either new job seekers who have left school, re-entrants into the labour market, or individuals who have been made redundant by their former employer.
- **Part 2 of the unemployment register:** Persons registering under Part 2 are either workers who have been dismissed from work due to disciplinary action, left work out of their own free will, refused work or training opportunities or were struck off the register after an inspection by the Law Enforcement personnel.

6. Gainfully occupied population data for January-July 2013 includes ex-MRRA workers under construction (NACE 41-43). Following changes in ministerial responsibilities, these workers were shifted to a new Ministry with a different economic activity, namely public administration and defence; compulsory social security (NACE 84). As a result, there was a change in the way this group of employees was considered for statistical purposes in the course of 2013, resulting in a break in comparability in the time series within these areas of economic activity.
7. In 2015 ETC adopted a revision in the economic activity classification of government entities, departments and ministries in collaboration with PAHRO. This implies that from January 2015 the economic activity of public sector entities and units is assigned according to the true activity of the unit and not according to the economic activity of the Ministry under which each unit is attached.
8. During the course of 2014 persons working with the public transport operator were shifted from the private sector to the public sector. Prior to 2014 and as from January 2015, those persons were considered to be part of the private sector.
9. Public sector employees working in the economic activity: electricity, gas, steam and air conditioning supply (NACE 35) have been reclassified to employment activities (NACE 78). In view of this reclassification, there was a shift in employment figures from the economic activity aggregate 'electricity, gas, steam and air conditioning supply' to the 'administrative and support service activities' aggregate. In line with other releases published by this Office, this reclassification was taken on board from August 2014 onwards.
10. With regard to employment in the public sector, users are strongly advised to take into account the shifts referred to in methodological notes 6, 7, 8 and 9 when analysing data longitudinally.
11. More information relating to this news release may be accessed at:

Statistical concept: <http://nso.gov.mt/metadata/concepts.aspx>

Classifications: http://nso.gov.mt/metadata/classificationdetails.aspx?id=NACE_Rev_2