

During the first quarter of 2016, there were four traffic fatalities.

Traffic Accidents: Q1/2016

The number of reported traffic accidents in the first quarter reached 3,713, up by 3.9 per cent over the comparative period in 2015. The Northern Harbour district registered the most accidents with 1,460 cases or 39.3 per cent of all accidents (Table 1).

Traffic casualties increased by 29.0 per cent to 467 over 2015, of which 262 (56.1 per cent) involved drivers. The amount of slight injuries sustained by drivers was 224 and 35 cases were reported as grievous. Another 35 persons (15 passengers and 20 pedestrians) suffered grievous injuries. There were also 124 passengers and 45 pedestrians who were slightly injured. Furthermore, the injuries suffered by three drivers and one passenger were fatal (Tables 3-6).

On a gender basis, slightly-injured persons in the first quarter this year amounted to 393: 218 males and 175 females. Grievously-injured persons totalled 70, the majority being males. The fatalities comprised of one male and three females. The majority of casualties fell in the 26-40 age bracket (Table 7).

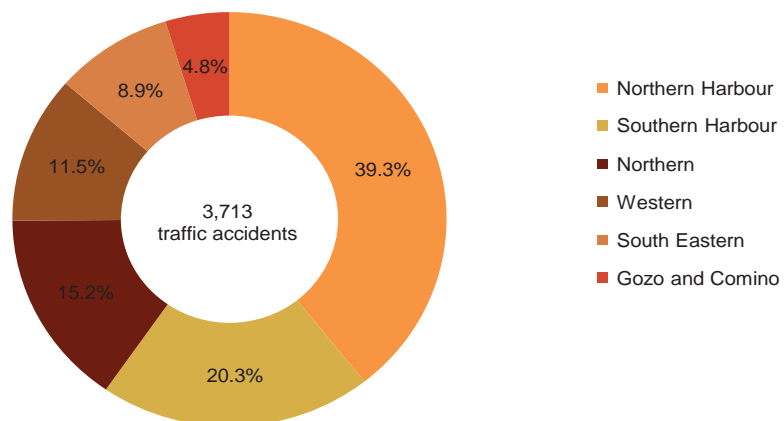
The largest number of traffic casualties (73.0 per cent) were caused by passenger cars, followed by motorcycles (15.4 per cent) and goods-carrying vehicles (6.0 per cent) (Table 8).

The highest traffic casualty rate occurred on Saturdays, accounting for 18.0 per cent of total casualties, while the highest number of accidents were recorded on Thursdays, totalling 616 cases, and the lowest was recorded on Sundays, with 384 cases. Sundays topped the highest casualty-to-accidents ratio, with 19.8 per cent compared to an overall average of 12.6 per cent (Table 9).

The daily time bracket in which most accidents occurred was between 09:00 and 11:59, with 837 cases, or 22.5 per cent of the total. This was followed by the 12:00-14:59 time bracket, with 776 cases. The least number of accidents occurring daily took place between 00:00 and 02:59 (83 cases) (Table 10).

The highest rate of traffic accidents was registered in Birkirkara with 306 cases. Hal Qormi and Marsa were next, with 190 and 158 reported accidents respectively (Table 11) ■

**Chart 1. Percentage distribution of road traffic accidents by district:
January-March 2016**



Compiled by:

**Unit B3: Environment,
Energy, Transport and
Agriculture Statistics**

Further information on data:

Mr Ronald TANTI
T. +356 2599 7333
E. ronald.tanti@gov.mt

Table 1. Total road traffic accidents: January-March

Region/District	2015	2016	Change	Percentage change
MALTA	3,572	3,713	141	3.9
Malta	3,406	3,536	130	3.8
Southern Harbour	823	754	-69	-8.4
Northern Harbour	1,374	1,460	86	6.3
South Eastern	302	329	27	8.9
Western	408	427	19	4.7
Northern	499	566	67	13.4
Gozo and Comino	166	177	11	6.6

Table 2. Minor road traffic accidents: January-March

Region/District	2015	2016	Change	Percentage change
MALTA	3,276	3,374	98	3.0
Malta	3,133	3,215	82	2.6
Southern Harbour	745	673	-72	-9.7
Northern Harbour	1,288	1,352	64	5.0
South Eastern	271	295	24	8.9
Western	376	387	11	2.9
Northern	453	508	55	12.1
Gozo and Comino	143	159	16	11.2

Table 3. Casualties in road traffic accidents: January-March

Region/District	2015	2016	Change	Percentage change
MALTA	362	467	105	29.0
Malta	336	440	104	31.0
Southern Harbour	97	108	11	11.3
Northern Harbour	104	156	52	50.0
South Eastern	39	49	10	25.6
Western	40	57	17	42.5
Northern	56	70	14	25.0
Gozo and Comino	26	27	1	3.8

Table 4. Injuries sustained by drivers in road traffic accidents: January-March

Region/District	2015				2016			
	Slight	Grievous	Fatal	Total	Slight	Grievous	Fatal	Total
MALTA	176	31	-	207	224	35	3	262
Malta	161	30	-	191	213	30	3	246
Southern Harbour	44	12	-	56	49	7	-	56
Northern Harbour	43	9	-	52	74	10	-	84
South Eastern	20	4	-	24	23	4	-	27
Western	22	1	-	23	33	2	1	36
Northern	32	4	-	36	34	7	2	43
Gozo and Comino	15	1	-	16	11	5	-	16

Table 5. Injuries sustained by passengers in road traffic accidents: January-March

Region/District	2015				2016			
	Slight	Grievous	Fatal	Total	Slight	Grievous	Fatal	Total
MALTA	86	10	1	97	124	15	1	140
Malta	82	9	-	91	117	13	1	131
Southern Harbour	28	1	-	29	34	2	-	36
Northern Harbour	21	1	-	22	38	9	1	48
South Eastern	10	2	-	12	16	2	-	18
Western	9	1	-	10	17	-	-	17
Northern	14	4	-	18	12	-	-	12
Gozo and Comino	4	1	1	6	7	2	-	9

Table 6. Injuries sustained by pedestrians in road traffic accidents: January-March

Region/District	2015				2016			
	Slight	Grievous	Fatal	Total	Slight	Grievous	Fatal	Total
MALTA	34	23	1	58	45	20	-	65
Malta	32	21	1	54	43	20	-	63
Southern Harbour	8	4	-	12	8	8	-	16
Northern Harbour	18	11	1	30	16	8	-	24
South Eastern	2	1	-	3	3	1	-	4
Western	3	4	-	7	4	-	-	4
Northern	1	1	-	2	12	3	-	15
Gozo and Comino	2	2	-	4	2	-	-	2

Chart 2. Total injuries by type in road traffic accidents: January-March 2016

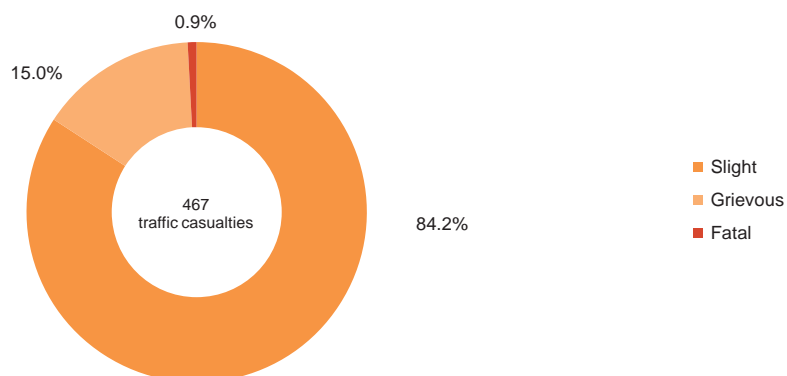


Table 7. Traffic casualties by type of injury, age group and sex: January-March

Age group	2015	2016			
	Total	Slight	Grievous	Fatal	Total
Males					
0-10	12	8	2	-	10
11-17	9	5	1	-	6
18-25	52	41	15	-	56
26-40	61	69	7	1	77
41-59	44	60	17	-	77
60-65	11	13	4	-	17
66+	15	21	7	-	28
unknown	1	1	-	-	1
Total	205	218	53	1	272
Females					
0-10	6	13	-	-	13
11-17	5	7	-	-	7
18-25	29	33	4	-	37
26-40	46	50	4	2	56
41-59	37	44	4	1	49
60-65	13	10	-	-	10
66+	21	18	4	-	22
unknown	-	-	1	-	1
Total	157	175	17	3	195
Total					
0-10	18	21	2	-	23
11-17	14	12	1	-	13
18-25	81	74	19	-	93
26-40	107	119	11	3	133
41-59	81	104	21	1	126
60-65	24	23	4	-	27
66+	36	39	11	-	50
unknown	1	1	1	-	2
Total	362	393	70	4	467

Table 8. Road traffic casualties by type of injury and means of transport

Vehicle type	January-March				
	2015	2016			
	Total	Slight	Grievous	Fatal	Total
Motorcycle	60	50	20	2	72
Passenger car	277	300	39	2	341
Coach and bus	3	15	5	-	20
Goods-carrying vehicle	20	24	4	-	28
Unknown vehicle type	2	4	2	-	6
Total	362	393	70	4	467

Table 9. Road traffic casualties and accidents by day of the week: January-March 2016

	Monday	Tuesday	Wednesday	Thursday	Friday	Saturday	Sunday	Total
Traffic casualties	73	54	51	77	52	84	76	467
Traffic accidents	611	506	570	616	531	495	384	3,713
Casualties-to-accidents ratio (%)	11.9	10.7	8.9	12.5	9.8	17.0	19.8	12.6

Chart 3. Total road traffic casualties by day of the week: January-March 2016

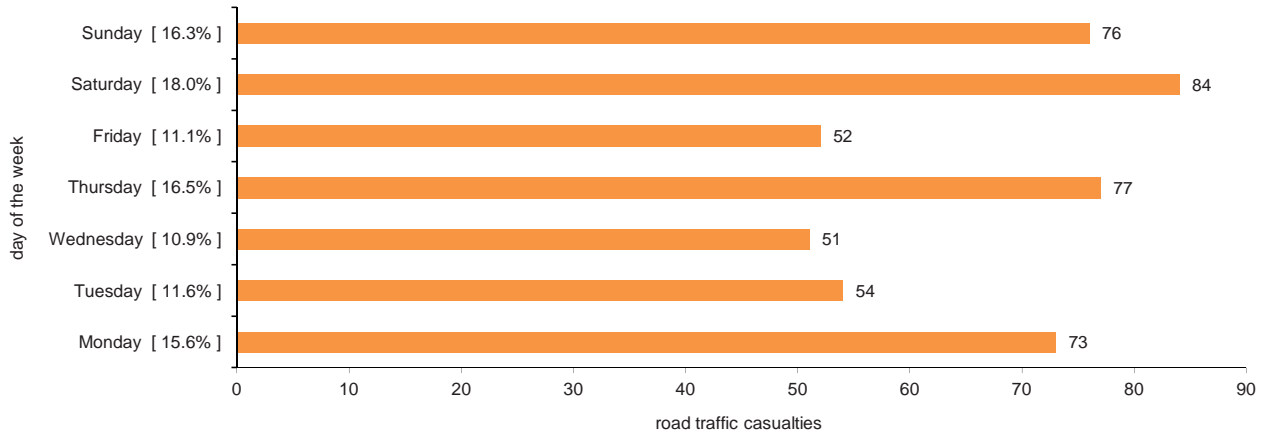


Chart 4. Total road traffic accidents by day of the week: January-March 2016

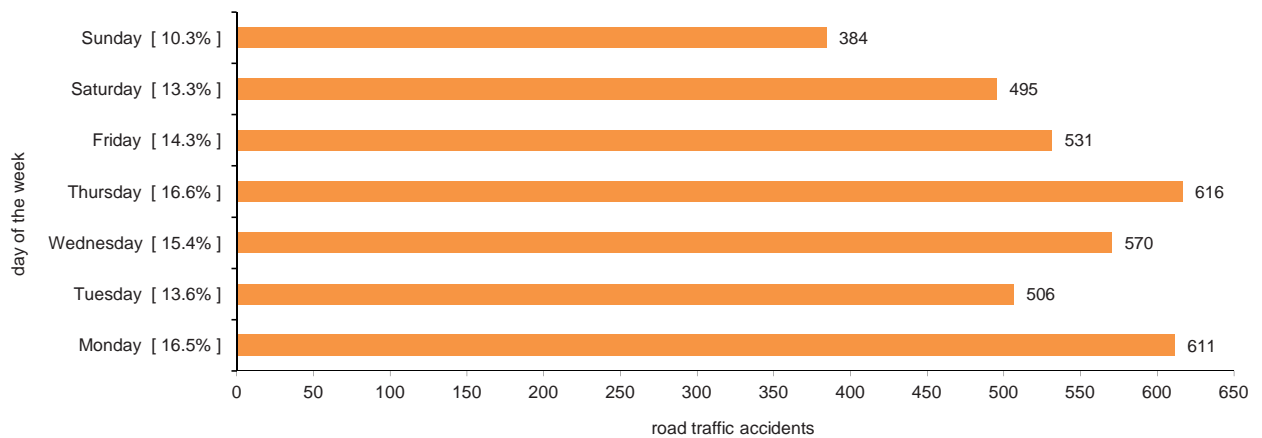


Table 10. Road traffic accidents by day and time bracket: January-March 2016

Time	Monday	Tuesday	Wednesday	Thursday	Friday	Saturday	Sunday	Total
00:00 - 02:59	8	4	4	8	10	21	28	83
03:00 - 05:59	9	4	9	9	10	17	27	85
06:00 - 08:59	121	94	103	120	76	45	27	586
09:00 - 11:59	131	110	115	144	145	119	73	837
12:00 - 14:59	137	92	141	127	104	108	67	776
15:00 - 17:59	142	109	116	121	113	88	70	759
18:00 - 20:59	45	70	63	64	52	66	68	428
21:00 - 23:59	18	23	19	23	21	31	24	159
Total	611	506	570	616	531	495	384	3,713

Chart 5. Traffic accidents by day and time bracket: January-March 2016

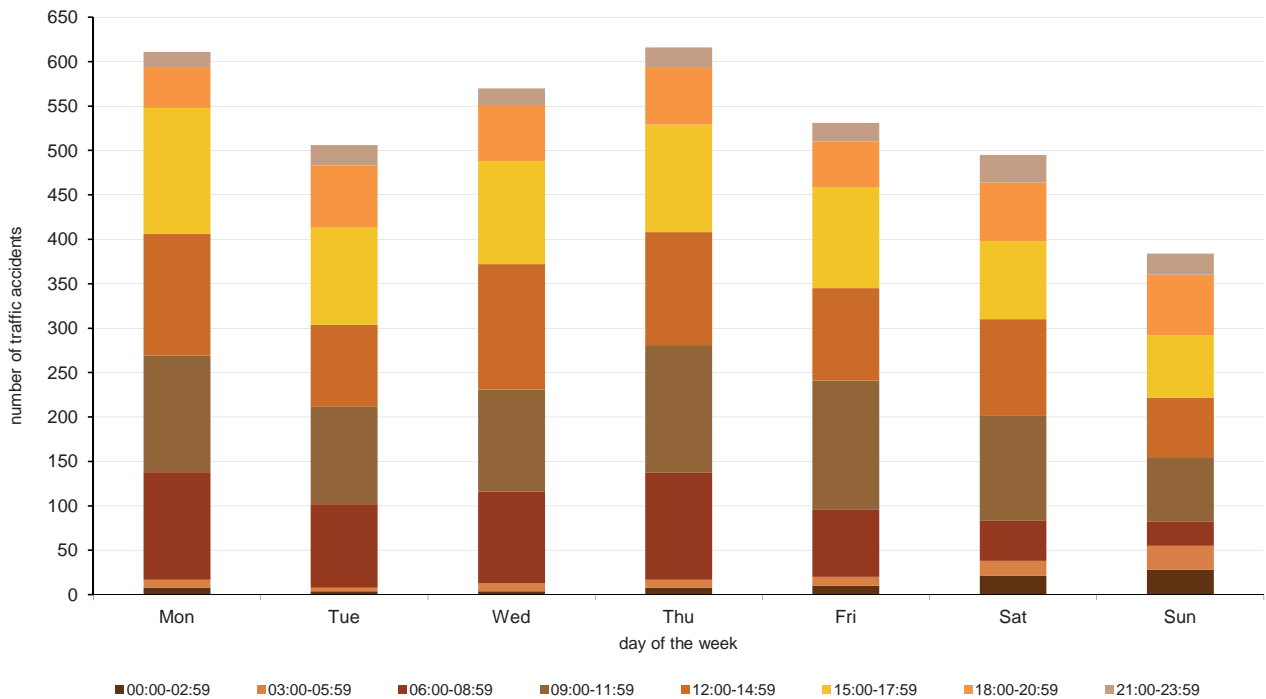


Table 11. Road traffic accidents by locality: January-March ...

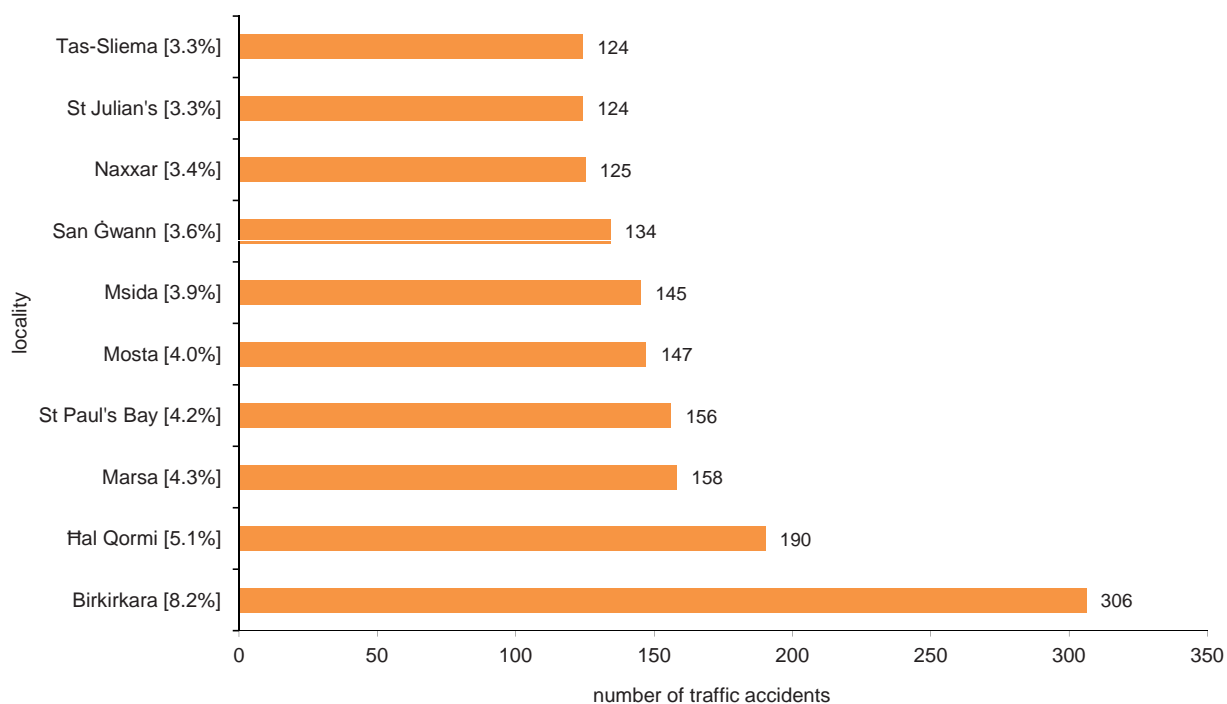
Locality	2015	2016	Change
Southern Harbour	823	754	-69
Cospicua	14	26	12
Fgura	82	68	-14
Floriana	60	53	-7
Hal Luqa	78	93	15
Hal Tarxien	73	72	-1
Haz-Żabbar	77	77	-
Kalkara	14	8	-6
Marsa	208	158	-50
Paola	132	117	-15
Santa Lucija	17	10	-7
Senglea	15	6	-9
Valletta	42	52	10
Vittoriosa	6	11	5
Xgħajra	5	3	-2
Northern Harbour	1,374	1,460	86
Birkirkara	283	306	23
Gżira	101	98	-3
Hal Qormi	174	190	16
Hamrun	88	116	28
Msida	149	145	-4
Pembroke	16	28	12
San Ġwann	144	134	-10
Santa Venera	75	70	-5
St Julian's	108	124	16
Swieqi	50	55	5
Ta' Xbiex	18	27	9
Tal-Pietà	58	43	-15
Tas-Sliema	110	124	14
South Eastern	302	329	27
Birżebbuġa	42	50	8
Gudja	32	39	7
Hal Għaxaq	28	23	-5
Hal Kirkop	10	19	9
Hal Safi	8	11	3
Marsaskala	45	37	-8
Marsaxlokk	16	13	-3
Mqabba	16	10	-6
Qrendi	7	6	-1
Żejtun	57	84	27
Żurrieq	41	37	-4
Western	408	427	19
Had-Dingli	7	14	7
Hal Balzan	43	34	-9
Hal Lija	61	53	-8
H'Attard	92	107	15
Haz-Żebbuġ	72	64	-8
Iklin	18	19	1
Mdina	8	15	7
Mtarfa	55	65	10
Rabat	47	48	1
Siggiewi	5	8	3
Northern	499	566	67
Hal Għargħur	21	30	9
Mellieħa	79	74	-5
Mġarr	35	34	-1
Mosta	121	147	26
Naxxar	125	125	-
St Paul's Bay	118	156	38

... Table 11. Road traffic accidents by locality: January-March

Locality	2015	2016	Change
Gozo and Comino	166	177	11
Fontana	4	3	-1
Għajnsielem	28	16	-12
Għarb	1	5	4
Għasri	3	3	-
Munxar	1	4	3
Nadur	15	19	4
Qala	5	3	-2
San Lawrenz	-	-	-
Ta' Kerċem	2	8	6
Ta' Sannat	3	3	-
Victoria	67	51	-16
Xagħra	6	28	22
Xewkija	18	27	9
Żebbuġ	13	7	-6

Note: Localities are grouped under main Local Councils

Chart 6. Top ten localities in which most accidents occurred: January-March 2016



Methodological Notes

1. Traffic accident data are compiled from administrative information provided by the Police Department, the Guard and Warden Services Limited and the Malta Insurance Association.
2. Total road traffic accidents is equal to the accidents involving casualties (Police report) plus the minor accidents without casualties (Police and Warden reports).
3. Minor traffic accidents which are not reported or those reported to Insurance Agencies by means of the Traffic Accident Form (i.e. no Police or Wardens are called on the accident scene and those involved in the accident decide to settle by filling in the form) are not accounted for.
4. Minor traffic accidents refer to accidents in which no persons are injured and which are assessed by the police and by the traffic wardens.
5. Traffic road accidents is equal to the total road traffic accidents (Table 1) minus minor road traffic accidents (Table 2).
6. The type of casualty (slight or grievous) is determined by the Health Department. The definitions of deaths caused by road accidents refer to the European Conference for Ministers of Transport (ECMT) and United Nations Economic Commission for Europe (UNECE).
7. UNECE definition of fatal injury: "Any person who was killed outright or who died within 30 days as a result of the accident".
8. Data may be subject to revision.
9. More information relating to this news release may be accessed at:
Statistical Concepts: <http://nso.gov.mt/metadata/concepts.aspx>