

20 September 2016 | 1100 hrs | 151/2016

In August 2016, the annual rate of inflation as measured by the Retail Price Index went up to 0.82 per cent, from 0.69 per cent registered in July 2016.

Retail Price Index: August 2016

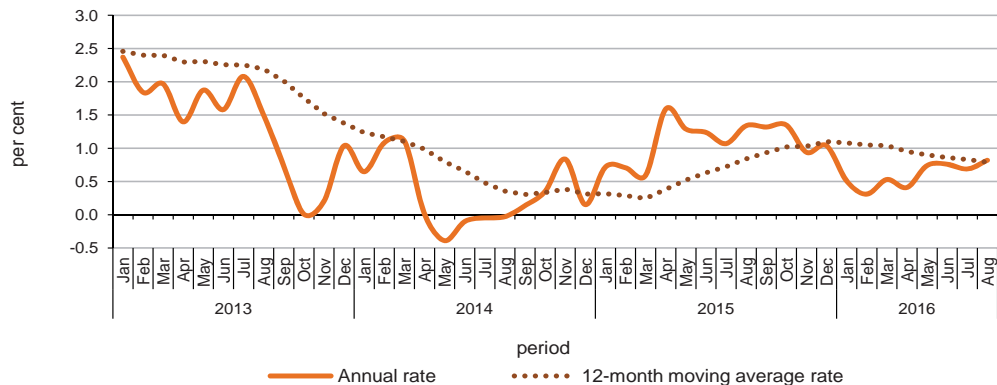
The monthly inflation rate registered in August 2016 was 0.18 per cent, up from -0.34 per cent registered in July 2016 (Table 2).

The main upward impacts on annual inflation were recorded in the Food Index (0.67 percentage points), the Beverages and Tobacco Index (0.25 percentage points) and the Household Equipment and House Maintenance Cost Index (0.13 percentage points). This was mainly due to higher prices of fruit, cigarettes and furniture respectively (Table 5).

The Transport and Communication Index (0.48 percentage points), the Clothing and Footwear Index (0.25 percentage points) and the Water, Electricity, Gas and Fuels Index (0.01 percentage points) were the main downward impacts on annual inflation. This was mainly due to a reduction in the prices of fuel, garments and gas respectively (Table 5).

The twelve-month moving average rate was 0.79 per cent (Table 4) ■

Chart 1. Inflation rates



Compiled by:

Unit A5: Price Statistics

Further information on data:

Ms Denise MAGRIN

T. +356 2599 7312

E. denise.magrין@gov.mt

Kindly indicate source when quoting from this release.

The advance release calendar may be consulted at www.nso.gov.mt

Issued by: **Dissemination Unit, National Statistics Office, Lascaris, Valletta VLT 2000, Malta.**

T. +356 2599 7219 F. +356 2599 7205 E. nso@gov.mt

<https://twitter.com/NSOMALTA/> | <https://www.facebook.com/nsomalta/>

Table 1. RPI group indices

December 2009=100

Group	Weight	Indices			Percentage change	
		Aug 2015	Jul 2016	Aug 2016	Annual (Aug 2016/Aug 2015)	Monthly (Aug 2016/Jul 2016)
Food	21.23	120.42	122.39	124.20	3.13	1.48
Beverages and Tobacco	6.09	120.60	125.52	125.53	4.09	0.01
Clothing and Footwear	7.41	81.19	83.80	78.46	-3.36	-6.37
Housing	7.61	110.38	111.87	111.99	1.46	0.11
Water, Electricity, Gas and Fuels	3.36	103.52	103.11	103.11	-0.40	0.00
Household Equipment and House Maintenance Costs	6.59	105.25	106.27	107.38	2.02	1.05
Transport and Communication	22.76	105.52	102.59	103.32	-2.09	0.71
Personal Care and Health	8.57	109.05	110.07	110.19	1.05	0.11
Recreation and Culture	9.28	111.49	112.01	111.77	0.26	-0.21
Other Goods and Services	7.10	113.43	115.59	115.26	1.62	-0.28
All Items	100.00	109.50	110.20	110.40	0.82	0.18

Table 2. Retail Price Index by period and group
Rates of change (%)

Group	Weight	Annual			Monthly		
		Aug 2015	Jul 2016	Aug 2016	Aug 2015	Jul 2016	Aug 2016
Food	21.23	2.86	2.68	3.13	1.03	0.24	1.48
Beverages and Tobacco	6.09	3.40	4.38	4.09	0.29	0.22	0.01
Clothing and Footwear	7.41	2.37	-1.39	-3.36	-4.46	-9.93	-6.37
Housing	7.61	0.93	1.37	1.46	0.03	-0.24	0.11
Water, Electricity, Gas and Fuels	3.36	-1.41	-1.33	-0.40	-0.94	0.00	0.00
Household Equipment and House Maintenance Costs	6.59	1.63	1.24	2.02	0.27	-0.27	1.05
Transport and Communication	22.76	-1.48	-2.50	-2.09	0.29	1.07	0.71
Personal Care and Health	8.57	1.50	1.04	1.05	0.10	0.07	0.11
Recreation and Culture	9.28	2.88	0.44	0.26	-0.03	0.57	-0.21
Other Goods and Services	7.10	1.97	1.81	1.62	-0.10	-0.53	-0.28
All Items	100.00	1.34	0.69	0.82	0.05	-0.34	0.18

Table 3. All Items RPI by month and year*December 2009=100*

Year	Jan	Feb	Mar	Apr	May	Jun	Jul	Aug	Sep	Oct	Nov	Dec
2013	106.58	106.67	107.24	108.08	108.61	108.51	108.34	108.08	108.26	108.52	108.56	109.50
2014	107.27	107.83	108.43	108.09	108.19	108.40	108.29	108.05	108.41	108.90	109.47	109.67
2015	108.04	108.59	109.07	109.81	109.58	109.75	109.45	109.50	109.85	110.36	110.49	110.81
2016	108.59	108.93	109.65	110.26	110.39	110.58	110.20	110.40				

Table 4. Inflation rates by month and year*(%)*

Rates over time	Jan	Feb	Mar	Apr	May	Jun	Jul	Aug	Sep	Oct	Nov	Dec
2013												
Annual rate	2.37	1.84	1.97	1.40	1.88	1.58	2.08	1.50	0.74	0.01	0.20	1.04
12-month moving average rate	2.46	2.40	2.40	2.30	2.31	2.26	2.25	2.19	2.01	1.76	1.52	1.38
2014												
Annual rate	0.65	1.08	1.11	0.01	-0.39	-0.10	-0.05	-0.03	0.14	0.35	0.84	0.15
12-month moving average rate	1.23	1.17	1.10	0.99	0.80	0.66	0.48	0.35	0.30	0.33	0.39	0.31
2015												
Annual rate	0.72	0.71	0.59	1.59	1.29	1.24	1.07	1.34	1.32	1.35	0.94	1.04
12-month moving average rate	0.32	0.29	0.24	0.38	0.52	0.63	0.72	0.84	0.93	1.02	1.03	1.10
2016												
Annual rate	0.51	0.31	0.53	0.41	0.74	0.76	0.69	0.82				
12-month moving average rate	1.08	1.05	1.04	0.95	0.90	0.86	0.83	0.79				

Table 5. Impact on annual inflation by group *

Group	Weight	Annual rate August 2016	Impact (percentage points) August 2016
Food	21.23	3.13	0.67
Beverages and Tobacco	6.09	4.09	0.25
Clothing and Footwear	7.41	-3.36	-0.25
Housing	7.61	1.46	0.11
Water, Electricity, Gas and Fuels	3.36	-0.40	-0.01
Household Equipment and House Maintenance Costs	6.59	2.02	0.13
Transport and Communication	22.76	-2.09	-0.48
Personal Care and Health	8.57	1.05	0.09
Recreation and Culture	9.28	0.26	0.02
Other Goods and Services	7.10	1.62	0.11

* See methodological note 6

Methodological Notes

1. The Retail Price Index is the main measure of inflation in Malta. It measures the average change from month to month in the prices of goods and services purchased by most households in Malta.
2. The Index is compiled using a large and representative selection of more than 355 separate goods and services for which price movements are regularly monitored. Over 9,000 separate price quotations are used each month in compiling the Index.
3. The methodology of the Retail Price Index (RPI) and the Harmonised Index of Consumer Prices (HICP) is similar, but differs in the following ways:
 - (a) The population base of each index is different. The RPI is representative of private households only. The HICP covers private households, institutional households and foreign visitors to Malta;
 - (b) The RPI is a fixed weight and fixed base index while the HICP is a chain index whose weights are reviewed on an annual basis. Additionally, newly significant goods and services can be introduced into the HICP on an annual basis;
 - (c) The coverage of the HICP is based on an international classifications system, COICOP (Classification of Individual Consumption by Purpose). The way in which this broadly maps to the RPI groupings is shown in the following table:

	COICOP Division	RPI Group
01	Food and non-alcoholic beverages	Food (including take-away food and food consumed in restaurants)
02	Alcoholic Beverages and Tobacco	Beverages and tobacco
03	Clothing and Footwear	Clothing and footwear
04	Housing, Water, Electricity, Gas and Other Fuels	Housing Water, electricity, gas and fuels
05	Furniture, Household Equipment and Routine Maintenance of the House	Household equipment and house maintenance costs
06	Health	Personal care and health
07	Transport	Transport and communication
08	Communication	
09	Recreation and Culture	Recreation and culture (including education)
10	Education	
11	Restaurants and Hotels	Restaurants (included under food)
12	Miscellaneous Goods and Services	Other goods and services

This comparison is broad and indicative only. Therefore, users are advised to consult the NSO before comparing the results of these indices at such levels.

4. Price quotations in respect of the goods and services in the latest index series started being collected in December 2009. This latest index series may be linked to the previous one by using a linking coefficient of 1.1835.
5. Each monthly News Release on the Retail Price Index shall include three different measures of inflation as follows:
 - (a) The **monthly inflation** compares price levels between the two latest months. Although up to date, this can be affected by seasonal and other effects.
 - (b) The **annual inflation** measures price changes between the reference month and the same month of the previous year. This measure is responsive to recent changes in price levels but can be influenced by one-off effects in either month.
 - (c) The **12-month average rate** overcomes the volatility of the above two rates by comparing average Retail Price Indices in the latest 12 months to the average of the previous 12 months. This measure is less sensitive to transient changes in prices.

6. An impact is a measure showing the change in the inflation due to the inclusion of an index. The impact takes account of both the weight and the annual rate of inflation by sub-index. Figures may not add up due to rounding.
7. The data in this release are not normally subject to revision.
8. Figures may not add up due to rounding.
9. More information on the Retail Price Index is available from the NSO website at: http://nso.gov.mt/en/nso/Selected_Indicators/Retail_Price_Index/Pages/Retail-Price-Index.aspx
10. More information relating to this news release may be accessed at:
Statistical Concepts: <http://nso.gov.mt/metadata/concepts.aspx>
Metadata: <http://nso.gov.mt/metadata/reports.aspx?id=10>
Statistical Database: <http://nso.gov.mt/statdb/start>