

In April 2016, registered full-time employment increased by 4.3 per cent while part-time employment as a primary job increased by 5.8 per cent when compared to the corresponding month of the previous year.

## Gainfully Occupied Population: April 2016

Administrative data provided by Jobsplus show that over a period of one year, the labour supply (excluding part-timers, see methodological notes) increased by 3.2 per cent, reaching 181,502. This was mainly attributed to an increase in the full-time gainfully occupied population (7,384) and a drop in registered unemployment (1,817) (Table 1).

### Registered full-time employment

In April 2016, Administrative and support service activities (NACE 77-82, 1,541) and Arts, entertainment and recreation (NACE 90-93, 1,446) contributed mostly to the increase in employment, compared to April 2015 (Table 1). Registered full-time employment in the private sector went up by 7,075 persons to 133,370. Public sector full-time employment increased by 309 persons to 44,381 (Table 2).

The number of persons registered as full-time self-employed rose by 420 when compared to April 2015, while the number of persons registered as employees increased by 6,964. Full-time employment for males and females went up by 3.2 per cent and 6.3 per cent respectively over 2015 levels (Table 2) .

### Registered part-time employment

Registered part-time employment in April 2016 went up by 6.1 per cent when compared to a year earlier. The sectors that contributed most to the overall increase were Accommodation and food service activities (NACE 55-56, 803), Wholesale and retail trade; repair of motor vehicles and motorcycles (NACE 45-47, 752) and Administrative and support service activities (NACE 77-82, 340) (Table 3).

The number of part-timers who also held a full-time job amounted to 24,335 up by 6.5 per cent when compared to the corresponding month in 2015. Employed persons whose part-time job was their primary occupation totalled 35,053, up by 5.8 per cent or 1,922 persons when compared to 2015 (Table 4) ■

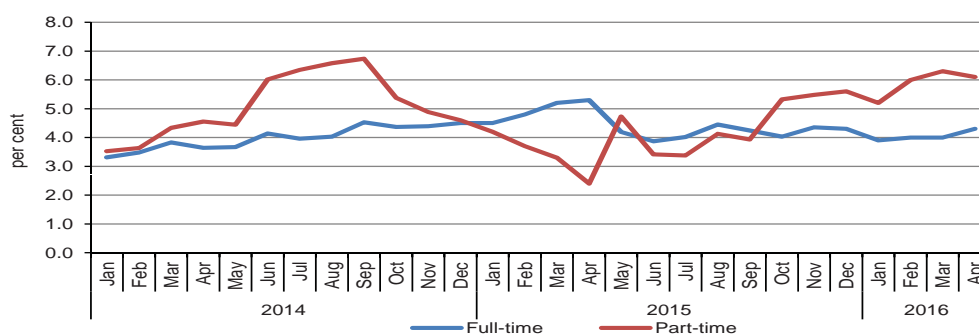
Compiled by:

**Unit C2: Labour Market  
Statistics**

Further information on data:

**Ms Joslyn MAGRO  
CUSCHIERI**  
T. +356 2599 7662  
E. joslyn.magro@gov.mt

**Chart 1. Annual percentage change in full-time and part-time employment**



Users are strongly advised to take into account the shifts referred to in methodological notes 6, 7 and 8 when analysing time series data.

Kindly indicate source when quoting from this release.

The advance release calendar may be consulted at [www.nso.gov.mt](http://www.nso.gov.mt)

Issued by: **Dissemination Unit, National Statistics Office, Lascaris, Valletta VLT 2000, Malta.**

T. +356 2599 7219 F. +356 2599 7205 E. [nso@gov.mt](mailto:nso@gov.mt)

<https://twitter.com/NSOMALTA/> | <https://www.facebook.com/nsomalta/>

Table 1. Full-time employment classified by period and economic activity ...

NACE division	Economic activity	Average 2014	Average 2015 (revised)	March 2015	March 2016	April 2015 (revised)	April 2016
<b>01-03</b>	<b>Agriculture, forestry and fishing</b>	<b>2,020</b>	<b>2,370</b>	<b>2,366</b>	<b>2,257</b>	<b>2,372</b>	<b>2,273</b>
01	Crop and animal production, hunting and related service activities	1,503	1,817	1,833	1,703	1,838	1,704
02	Forestry and logging	-	-	-	-	-	-
03	Fishing and aquaculture	517	553	533	554	534	569
<b>05-09</b>	<b>Mining and quarrying</b>	<b>334</b>	<b>363</b>	<b>371</b>	<b>371</b>	<b>361</b>	<b>373</b>
05	Mining of coal and lignite	-	-	-	-	-	-
06	Extraction of crude petroleum and natural gas	-	-	-	-	-	-
07	Mining of metal ores	-	-	-	-	-	-
08	Other mining and quarrying	174	175	175	170	169	162
09	Mining support service activities	160	188	196	201	192	211
<b>10-33</b>	<b>Manufacturing</b>	<b>20,436</b>	<b>20,680</b>	<b>20,748</b>	<b>20,620</b>	<b>21,388</b>	<b>21,366</b>
10	Manufacture of food products	2,521	2,690	2,681	2,592	3,072	2,941
11	Manufacture of beverages	855	868	857	851	860	855
12	Manufacture of tobacco products	16	16	16	15	16	16
13	Manufacture of textiles	342	314	302	326	309	325
14	Manufacture of wearing apparel	347	341	350	298	351	297
15	Manufacture of leather and related products	31	30	30	30	30	30
16	Manufacture of wood and of products of wood and cork, except furniture; manufacture of articles of straw and plaiting materials	321	335	335	349	340	354
17	Manufacture of paper and paper products	207	206	211	216	209	213
18	Printing and reproduction of recorded media	1,417	1,356	1,384	1,232	1,426	1,302
19	Manufacture of coke and refined petroleum products	6	8	7	10	8	9
20	Manufacture of chemicals and chemical products	273	279	278	279	278	286
21	Manufacture of basic pharmaceutical products and pharmaceutical preparations	1,112	1,124	1,099	1,166	1,148	1,206
22	Manufacture of rubber and plastic products	1,673	1,610	1,615	1,645	1,594	1,636
23	Manufacture of other non-metallic mineral products	1,121	1,101	1,106	1,102	1,110	1,094
24	Manufacture of basic metals	92	122	111	168	115	172
25	Manufacture of fabricated metal products, except machinery and equipment	1,234	1,216	1,238	1,192	1,238	1,194
26	Manufacture of computer, electronic and optical products	2,209	2,253	2,279	2,184	2,066	1,973
27	Manufacture of electrical equipment	495	503	498	512	493	509
28	Manufacture of machinery and equipment n.e.c.	426	424	411	485	419	496
29	Manufacture of motor vehicles, trailers and semi-trailers	1,085	1,112	1,119	1,124	1,118	1,136
30	Manufacture of other transport equipment	64	77	81	108	86	116
31	Manufacture of furniture	1,114	1,109	1,120	1,108	1,121	1,111
32	Other manufacturing	2,092	2,185	2,199	2,161	2,565	2,611

... Table 1. Full-time employment classified by period and economic activity

NACE division	Economic activity	Average 2014	Average 2015 (revised)	March 2015	March 2016	April 2015 (revised)	April 2016
33	Repair and installation of machinery and equipment	1,383	1,401	1,421	1,467	1,416	1,484
<b>35</b>	<b>Electricity, gas, steam and air conditioning supply<sup>1</sup></b>	<b>890</b>	<b>21</b>	<b>6</b>	<b>54</b>	<b>8</b>	<b>57</b>
<b>36-39</b>	<b>Water supply; sewerage, waste management and remediation activities</b>	<b>1,442</b>	<b>1,399</b>	<b>1,395</b>	<b>1,447</b>	<b>1,403</b>	<b>1,443</b>
36	Water collection, treatment and supply	1,001	993	987	1,018	994	1,015
37	Sewerage	8	5	5	5	5	5
38	Waste collection, treatment and disposal activities; materials recovery	419	386	388	405	389	405
39	Remediation activities and other waste management services	14	15	15	19	15	18
<b>41-43</b>	<b>Construction</b>	<b>9,296</b>	<b>10,398</b>	<b>10,493</b>	<b>10,446</b>	<b>10,658</b>	<b>10,618</b>
41	Construction of buildings	3,325	4,146	4,173	4,076	4,239	4,161
42	Civil engineering	672	719	718	763	811	846
43	Specialised construction activities	5,299	5,533	5,602	5,607	5,608	5,611
<b>45-47</b>	<b>Wholesale and retail trade; repair of motor vehicles and motorcycles</b>	<b>23,819</b>	<b>24,575</b>	<b>24,516</b>	<b>24,938</b>	<b>24,216</b>	<b>24,675</b>
45	Wholesale and retail trade and repair of motor vehicles and motorcycles	2,228	2,265	2,267	2,355	2,214	2,306
46	Wholesale trade, except of motor vehicles and motorcycles	8,876	9,362	9,364	9,359	8,870	8,889
47	Retail trade, except of motor vehicles and motorcycles	12,715	12,948	12,885	13,224	13,132	13,480
<b>49-53</b>	<b>Transportation and storage</b>	<b>9,217</b>	<b>9,524</b>	<b>9,377</b>	<b>9,747</b>	<b>9,418</b>	<b>9,804</b>
49	Land transport and transport via pipelines	2,992	3,230	3,131	3,359	3,115	3,321
50	Water transport	470	464	470	452	488	473
51	Air transport	1,247	1,325	1,206	1,418	1,205	1,424
52	Warehousing and support activities for transportation	3,874	3,864	3,934	3,848	3,976	3,894
53	Postal and courier activities	634	641	636	670	634	692
<b>55-56</b>	<b>Accommodation and food service activities</b>	<b>10,396</b>	<b>10,767</b>	<b>10,576</b>	<b>11,175</b>	<b>10,699</b>	<b>11,302</b>
55	Accommodation	5,641	5,711	5,601	5,697	5,694	5,780
56	Food and beverage service activities	4,755	5,056	4,975	5,478	5,005	5,522
<b>58-63</b>	<b>Information and communication</b>	<b>5,910</b>	<b>6,461</b>	<b>6,430</b>	<b>6,775</b>	<b>6,437</b>	<b>6,749</b>
58	Publishing activities	538	550	531	577	612	710
59	Motion picture, video and television programme production, sound recording and music publishing activities	290	359	381	303	413	297
60	Programming and broadcasting activities	468	601	594	614	592	605
61	Telecommunications	1,331	1,296	1,273	1,317	1,294	1,338
62	Computer programming, consultancy and related activities	2,746	2,988	3,003	3,232	2,879	3,093
63	Information service activities	537	667	648	732	647	706
<b>64-66</b>	<b>Financial and insurance activities</b>	<b>8,092</b>	<b>8,543</b>	<b>8,375</b>	<b>8,869</b>	<b>8,342</b>	<b>8,816</b>
64	Financial service activities, except insurance and pension funding	5,806	6,162	6,052	6,351	6,125	6,430
65	Insurance, reinsurance and pension funding, except compulsory social security	695	764	730	836	807	902

... Table 1. Full-time employment classified by period and economic activity

NACE division	Economic activity	Average 2014	Average 2015 (revised)	March 2015	March 2016	April 2015 (revised)	April 2016
66	Activities auxiliary to financial services and insurance activities	1,591	1,617	1,593	1,682	1,410	1,484
<b>68</b>	<b>Real estate activities</b>	<b>1,101</b>	<b>1,375</b>	<b>1,376</b>	<b>1,432</b>	<b>1,333</b>	<b>1,385</b>
<b>69-75</b>	<b>Professional, scientific and technical activities</b>	<b>8,382</b>	<b>9,351</b>	<b>9,208</b>	<b>10,127</b>	<b>8,943</b>	<b>9,786</b>
69	Legal and accounting activities	2,800	3,179	3,113	3,336	3,355	3,601
70	Activities of head offices; management consultancy activities	2,114	2,269	2,227	2,521	2,203	2,564
71	Architectural and engineering activities; technical testing and analysis	1,649	1,818	1,788	1,993	1,648	1,730
72	Scientific research and development	24	24	23	31	25	33
73	Advertising and market research	1,175	1,343	1,323	1,477	1,022	1,126
74	Other professional, scientific and technical activities	562	628	641	679	595	641
75	Veterinary activities	58	90	93	90	95	91
<b>77-82</b>	<b>Administrative and support service activities<sup>1</sup></b>	<b>10,972</b>	<b>13,422</b>	<b>13,193</b>	<b>14,491</b>	<b>13,135</b>	<b>14,676</b>
77	Rental and leasing activities	1,127	1,185	1,185	1,243	1,172	1,210
78	Employment activities	2,528	3,262	3,268	3,781	2,984	3,527
79	Travel agency, tour operator and other reservation service and related activities	1,183	1,189	1,158	1,160	1,166	1,175
80	Security and investigation activities	1,473	1,948	1,755	2,181	1,803	2,222
81	Services to buildings and landscape activities	2,182	3,057	3,085	3,061	3,174	3,439
82	Office administrative, office support and other business support activities	2,479	2,781	2,742	3,065	2,836	3,103
<b>84</b>	<b>Public administration and defence; compulsory social security</b>	<b>14,032</b>	<b>12,671</b>	<b>12,589</b>	<b>12,816</b>	<b>12,579</b>	<b>12,884</b>
<b>85</b>	<b>Education</b>	<b>15,490</b>	<b>15,741</b>	<b>15,676</b>	<b>16,056</b>	<b>15,736</b>	<b>16,107</b>
<b>86-88</b>	<b>Human health and social work activities</b>	<b>13,801</b>	<b>14,294</b>	<b>14,188</b>	<b>14,599</b>	<b>14,192</b>	<b>14,684</b>
86	Human health activities	8,726	9,042	8,927	9,074	8,966	9,085
87	Residential care activities	3,679	3,970	3,980	4,196	3,993	4,257
88	Social work activities without accommodation	1,396	1,282	1,281	1,329	1,233	1,342
<b>90-93</b>	<b>Arts, entertainment and recreation</b>	<b>4,657</b>	<b>5,412</b>	<b>5,098</b>	<b>6,419</b>	<b>5,531</b>	<b>6,977</b>
90	Creative, arts and entertainment activities	397	418	407	455	468	525
91	Libraries, archives, museums and other cultural activities	429	392	388	405	393	403
92	Gambling and betting activities	3,192	3,918	3,649	4,868	4,002	5,277
93	Sports activities and amusement and recreation activities	639	684	654	691	668	772
<b>94-96</b>	<b>Other service activities</b>	<b>3,239</b>	<b>3,425</b>	<b>3,343</b>	<b>3,493</b>	<b>3,377</b>	<b>3,538</b>
94	Activities of membership organisations	662	701	675	747	678	758
95	Repair of computers and personal and household goods	271	276	276	283	286	293
96	Other personal service activities	2,306	2,448	2,392	2,463	2,413	2,487
<b>97-98</b>	<b>Activities of households as employers; undifferentiated goods- and services-producing activities of households for own use</b>	<b>17</b>	<b>20</b>	<b>21</b>	<b>20</b>	<b>20</b>	<b>23</b>
97	Activities of households as employers of domestic personnel	17	20	21	20	20	23

... Table 1. Full-time employment classified by period and economic activity

NACE division	Economic activity	Average 2014	Average 2015 (revised)	March 2015	March 2016	April 2015 (revised)	April 2016
98	Undifferentiated goods- and services-producing activities of private households for own use	-	-	-	-	-	-
99	<b>Activities of extraterritorial organisations and bodies</b>	217	218	220	216	219	215
01-99	<b>Total Gainfully Occupied</b> (including apprentices)	163,760	171,030	169,565	176,368	170,367	177,751
	<b>Registered Unemployed</b>	6,971	5,295	5,894	4,033	5,568	3,751
	Part I	6,536	4,856	5,446	3,688	5,166	3,431
	Part II	435	439	448	345	402	320
	<b>Labour Supply</b> (excluding part-time employment)	170,731	176,325	175,459	180,401	175,935	181,502

<sup>1</sup> Refer to methodological note 8.

Table 2. Full-time employment classified by period, economic activity and category ...

NACE division	Economic activity	Category	Average 2014	Average 2015 <sup>2</sup> (revised)	March 2015	March 2016	April 2015 (revised)	April 2016
01-03	Agriculture, forestry and fishing	Private Sector	1,846	1,867	1,870	1,875	1,870	1,890
		Public Sector	174	503	496	382	502	383
		Males	1,839	2,105	2,105	2,018	2,108	2,027
		Females	181	265	261	239	264	246
		Self-employed	1,435	1,415	1,417	1,401	1,416	1,399
		Employees	585	955	949	856	956	874
		Malta	1,548	1,907	1,906	1,798	1,912	1,814
		Gozo	472	463	460	459	460	459
		<b>Total</b>	<b>2,020</b>	<b>2,370</b>	<b>2,366</b>	<b>2,257</b>	<b>2,372</b>	<b>2,273</b>
		05-09	Mining and quarrying	Private Sector	334	363	371	371
Public Sector	-			-	-	-	-	-
Males	309			326	334	331	327	335
Females	25			37	37	40	34	38
Self-employed	80			78	82	78	80	79
Employees	254			285	289	293	281	294
Malta	298			326	336	341	326	342
Gozo	36			37	35	30	35	31
<b>Total</b>	<b>334</b>			<b>363</b>	<b>371</b>	<b>371</b>	<b>361</b>	<b>373</b>
10-33	Manufacturing			Private Sector	20,380	20,546	20,598	20,535
		Public Sector	56	134	150	85	160	84
		Males	15,299	15,410	15,459	15,367	15,914	15,865
		Females	5,137	5,270	5,289	5,253	5,474	5,501
		Self-employed	1,424	1,476	1,467	1,538	1,483	1,554
		Employees	19,012	19,204	19,281	19,082	19,905	19,812
		Malta	19,487	19,704	19,815	19,618	20,429	20,343
		Gozo	949	976	933	1,002	959	1,023
		<b>Total</b>	<b>20,436</b>	<b>20,680</b>	<b>20,748</b>	<b>20,620</b>	<b>21,388</b>	<b>21,366</b>
		35	Electricity, gas, steam and air conditioning supply <sup>1</sup>	Private Sector	13	16	6	24
Public Sector	877			5	-	30	-	31
Males	801			20	6	44	8	45
Females	89			1	-	10	-	12
Self-employed	6			6	3	6	4	6
Employees	884			15	3	48	4	51
Malta	860			20	6	52	8	55
Gozo	30			1	-	2	-	2
<b>Total</b>	<b>890</b>			<b>21</b>	<b>6</b>	<b>54</b>	<b>8</b>	<b>57</b>

... Table 2. Full-time employment classified by period, economic activity and category

NACE division	Economic activity	Category	Average 2014	Average 2015 <sup>2</sup> (revised)	March 2015	March 2016	April 2015 (revised)	April 2016
36-39	Water supply; sewerage, waste management and remediation activities	Private Sector	342	342	339	357	338	356
		Public Sector	1,100	1,057	1,056	1,090	1,065	1,087
		Males	1,282	1,235	1,243	1,253	1,246	1,251
		Females	160	164	152	194	157	192
		Self-employed	77	77	76	74	76	74
		Employees	1,365	1,322	1,319	1,373	1,327	1,369
		Malta	1,291	1,285	1,285	1,323	1,293	1,318
		Gozo	151	114	110	124	110	125
		<b>Total</b>	<b>1,442</b>	<b>1,399</b>	<b>1,395</b>	<b>1,447</b>	<b>1,403</b>	<b>1,443</b>
		41-43	Construction	Private Sector	8,995	9,285	9,343	9,403
Public Sector	301			1,113	1,150	1,043	1,138	1,035
Males	8,873			9,889	9,996	9,912	10,155	10,069
Females	423			509	497	534	503	549
Self-employed	2,741			2,790	2,788	2,856	2,810	2,868
Employees	6,555			7,608	7,705	7,590	7,848	7,750
Malta	8,336			9,455	9,538	9,498	9,705	9,660
Gozo	960			943	955	948	953	958
<b>Total</b>	<b>9,296</b>			<b>10,398</b>	<b>10,493</b>	<b>10,446</b>	<b>10,658</b>	<b>10,618</b>
45-47	Wholesale and retail trade; repair of motor vehicles and motorcycles			Private Sector	23,819	24,488	24,429	24,848
		Public Sector	-	87	87	90	88	90
		Males	16,004	16,422	16,449	16,503	16,222	16,261
		Females	7,815	8,153	8,067	8,435	7,994	8,414
		Self-employed	5,344	5,431	5,478	5,273	5,466	5,263
		Employees	18,475	19,144	19,038	19,665	18,750	19,412
		Malta	22,521	23,292	23,252	23,624	22,958	23,365
		Gozo	1,298	1,283	1,264	1,314	1,258	1,310
		<b>Total</b>	<b>23,819</b>	<b>24,575</b>	<b>24,516</b>	<b>24,938</b>	<b>24,216</b>	<b>24,675</b>
		49-53	Transportation and storage	Private Sector	6,394	7,554	7,441	7,788
Public Sector	2,823			1,970	1,936	1,959	1,933	1,959
Males	7,618			7,849	7,730	8,024	7,764	8,065
Females	1,599			1,675	1,647	1,723	1,654	1,739
Self-employed	954			971	972	975	982	984
Employees	8,263			8,553	8,405	8,772	8,436	8,820
Malta	8,752			9,051	8,912	9,267	8,949	9,319
Gozo	465			473	465	480	469	485
<b>Total</b>	<b>9,217</b>			<b>9,524</b>	<b>9,377</b>	<b>9,747</b>	<b>9,418</b>	<b>9,804</b>

... Table 2. Full-time employment classified by period, economic activity and category

NACE division	Economic activity	Category	Average 2014	Average 2015 <sup>2</sup> (revised)	March 2015	March 2016	April 2015 (revised)	April 2016
55-56	Accommodation and food service activities	Private Sector	10,396	10,767	10,576	11,175	10,699	11,302
		Public Sector	-	-	-	-	-	-
		Males	7,125	7,292	7,225	7,527	7,290	7,621
		Females	3,271	3,475	3,351	3,648	3,409	3,681
		Self-employed	1,204	1,233	1,239	1,280	1,239	1,287
		Employees	9,192	9,534	9,337	9,895	9,460	10,015
		Malta	9,584	9,956	9,791	10,342	9,903	10,463
		Gozo	812	811	785	833	796	839
		<b>Total</b>	<b>10,396</b>	<b>10,767</b>	<b>10,576</b>	<b>11,175</b>	<b>10,699</b>	<b>11,302</b>
58-63	Information and communication	Private Sector	5,394	5,855	5,830	6,164	5,836	6,146
		Public Sector	516	606	600	611	601	603
		Males	4,249	4,620	4,603	4,805	4,595	4,785
		Females	1,661	1,841	1,827	1,970	1,842	1,964
		Self-employed	278	320	306	344	310	358
		Employees	5,632	6,141	6,124	6,431	6,127	6,391
		Malta	5,681	6,205	6,185	6,506	6,210	6,495
		Gozo	229	256	245	269	227	254
		<b>Total</b>	<b>5,910</b>	<b>6,461</b>	<b>6,430</b>	<b>6,775</b>	<b>6,437</b>	<b>6,749</b>
64-66	Financial and insurance activities	Private Sector	7,379	7,768	7,611	8,090	7,578	8,036
		Public Sector	713	775	764	779	764	780
		Males	4,007	4,212	4,132	4,337	4,089	4,286
		Females	4,085	4,331	4,243	4,532	4,253	4,530
		Self-employed	95	105	108	123	107	123
		Employees	7,997	8,438	8,267	8,746	8,235	8,693
		Malta	7,785	8,237	8,077	8,559	8,041	8,507
		Gozo	307	306	298	310	301	309
		<b>Total</b>	<b>8,092</b>	<b>8,543</b>	<b>8,375</b>	<b>8,869</b>	<b>8,342</b>	<b>8,816</b>
68	Real estate activities	Private Sector	1,041	1,098	1,096	1,160	1,053	1,115
		Public Sector	60	277	280	272	280	270
		Males	722	960	957	993	921	946
		Females	379	415	419	439	412	439
		Self-employed	334	366	355	399	354	405
		Employees	767	1,009	1,021	1,033	979	980
		Malta	1,018	1,288	1,294	1,347	1,245	1,297
		Gozo	83	87	82	85	88	88
		<b>Total</b>	<b>1,101</b>	<b>1,375</b>	<b>1,376</b>	<b>1,432</b>	<b>1,333</b>	<b>1,385</b>



... Table 2. Full-time employment classified by period, economic activity and category

NACE division	Economic activity	Category	Average 2014	Average 2015 <sup>2</sup> (revised)	March 2015	March 2016	April 2015 (revised)	April 2016
69-75	Professional, scientific and technical activities	Private Sector	8,328	9,242	9,102	10,009	8,834	9,666
		Public Sector	54	109	106	118	109	120
		Males	4,836	5,370	5,324	5,800	5,084	5,518
		Females	3,546	3,981	3,884	4,327	3,859	4,268
		Self-employed	1,293	1,452	1,424	1,547	1,454	1,575
		Employees	7,089	7,899	7,784	8,580	7,489	8,211
		Malta	8,079	9,031	8,901	9,796	8,639	9,453
		Gozo	303	320	307	331	304	333
		<b>Total</b>	<b>8,382</b>	<b>9,351</b>	<b>9,208</b>	<b>10,127</b>	<b>8,943</b>	<b>9,786</b>
		77-82	Administrative and support service activities <sup>1</sup>	Private Sector	9,405	10,426	10,186	11,597
Public Sector	1,567			2,996	3,007	2,894	3,009	2,901
Males	6,747			8,564	8,449	9,291	8,428	9,379
Females	4,225			4,858	4,744	5,200	4,707	5,297
Self-employed	796			894	882	944	890	949
Employees	10,176			12,528	12,311	13,547	12,245	13,727
Malta	10,589			12,910	12,691	13,832	12,633	13,986
Gozo	383			512	502	659	502	690
<b>Total</b>	<b>10,972</b>			<b>13,422</b>	<b>13,193</b>	<b>14,491</b>	<b>13,135</b>	<b>14,676</b>
84	Public administration and defence; compulsory social security			Private Sector	-	-	-	-
		Public Sector	14,032	12,671	12,589	12,816	12,579	12,884
		Males	9,967	8,477	8,446	8,497	8,423	8,561
		Females	4,065	4,194	4,143	4,319	4,156	4,323
		Self-employed	-	-	-	-	-	-
		Employees	14,032	12,671	12,589	12,816	12,579	12,884
		Malta	13,161	11,774	11,681	11,932	11,672	12,004
		Gozo	871	897	908	884	907	880
		<b>Total</b>	<b>14,032</b>	<b>12,671</b>	<b>12,589</b>	<b>12,816</b>	<b>12,579</b>	<b>12,884</b>
		85	Education	Private Sector	4,711	4,764	4,694	4,924
Public Sector	10,779			10,977	10,982	11,132	10,962	11,122
Males	5,011			4,908	4,911	4,862	4,921	4,871
Females	10,479			10,833	10,765	11,194	10,815	11,236
Self-employed	300			313	307	319	308	322
Employees	15,190			15,428	15,369	15,737	15,428	15,785
Malta	14,233			14,526	14,456	14,844	14,514	14,897
Gozo	1,257			1,215	1,220	1,212	1,222	1,210
<b>Total</b>	<b>15,490</b>			<b>15,741</b>	<b>15,676</b>	<b>16,056</b>	<b>15,736</b>	<b>16,107</b>

... Table 2. Full-time employment classified by period, economic activity and category

NACE division	Economic activity	Category	Average 2014	Average 2015 <sup>2</sup> (revised)	March 2015	March 2016	April 2015 (revised)	April 2016
86-88	Human health and social work activities	Private Sector	3,503	3,909	3,877	4,171	3,862	4,280
		Public Sector	10,298	10,385	10,311	10,428	10,330	10,404
		Males	5,355	5,367	5,344	5,426	5,349	5,437
		Females	8,446	8,927	8,844	9,173	8,843	9,247
		Self-employed	325	345	333	374	331	381
		Employees	13,476	13,949	13,855	14,225	13,861	14,303
		Malta	12,808	13,259	13,165	13,551	13,168	13,634
		Gozo	993	1,035	1,023	1,048	1,024	1,050
		<b>Total</b>	<b>13,801</b>	<b>14,294</b>	<b>14,188</b>	<b>14,599</b>	<b>14,192</b>	<b>14,684</b>
90-93	Arts, entertainment and recreation	Private Sector	4,057	4,869	4,563	5,854	4,992	6,410
		Public Sector	600	543	535	565	539	567
		Males	3,034	3,558	3,345	4,161	3,689	4,578
		Females	1,623	1,854	1,753	2,258	1,842	2,399
		Self-employed	426	446	434	477	446	488
		Employees	4,231	4,966	4,664	5,942	5,085	6,489
		Malta	4,483	5,216	4,908	6,213	5,319	6,743
		Gozo	174	196	190	206	212	234
		<b>Total</b>	<b>4,657</b>	<b>5,412</b>	<b>5,098</b>	<b>6,419</b>	<b>5,531</b>	<b>6,977</b>
94-96	Other service activities	Private Sector	3,224	3,396	3,331	3,436	3,364	3,477
		Public Sector	15	29	12	57	13	61
		Males	1,458	1,544	1,499	1,577	1,524	1,599
		Females	1,781	1,881	1,844	1,916	1,853	1,939
		Self-employed	1,499	1,603	1,591	1,646	1,602	1,660
		Employees	1,740	1,822	1,752	1,847	1,775	1,878
		Malta	3,087	3,262	3,184	3,328	3,219	3,372
		Gozo	152	163	159	165	158	166
		<b>Total</b>	<b>3,239</b>	<b>3,425</b>	<b>3,343</b>	<b>3,493</b>	<b>3,377</b>	<b>3,538</b>
97-98	Activities of households as employers; undifferentiated goods- and services-producing activities of households for own use	Private Sector	17	20	21	20	20	23
		Public Sector	-	-	-	-	-	-
		Males	8	9	8	9	8	8
		Females	9	11	13	11	12	15
		Self-employed	4	4	4	5	4	6
		Employees	13	16	17	15	16	17
		Malta	15	18	19	18	18	21
		Gozo	2	2	2	2	2	2
		<b>Total</b>	<b>17</b>	<b>20</b>	<b>21</b>	<b>20</b>	<b>20</b>	<b>23</b>

... Table 2. Full-time employment classified by period, economic activity and category

NACE division	Economic activity	Category	Average 2014	Average 2015 <sup>2</sup> (revised)	March 2015	March 2016	April 2015 (revised)	April 2016
99	Activities of extraterritorial organisations and bodies	Private Sector	217	218	220	216	219	215
		Public Sector	-	-	-	-	-	-
		Males	144	141	143	142	141	141
		Females	73	77	77	74	78	74
		Self-employed	-	2	-	5	-	1
		Employees	217	216	220	211	219	214
		Malta	217	218	220	216	219	215
		Gozo	-	-	-	-	-	-
		<b>Total</b>	<b>217</b>	<b>218</b>	<b>220</b>	<b>216</b>	<b>219</b>	<b>215</b>
01-99	Total Gainfully Occupied (including apprentices)	<b>Private Sector</b>	119,795	126,793	125,504	132,017	126,295	133,370
		<b>Public Sector</b>	43,965	44,237	44,061	44,351	44,072	44,381 <sup>3</sup>
		<b>Males</b>	104,688	108,278	107,708	110,879	108,206	111,648
		<b>Females</b>	59,072	62,752	61,857	65,489	62,161	66,103
		<b>Self-employed</b>	18,615	19,327	19,266	19,664	19,362	19,782
		<b>Employees</b>	145,145	151,703	150,299	156,704	151,005	157,969
		<b>Malta</b>	153,833	160,940	159,622	166,005	160,380	167,303
		<b>Gozo</b>	9,927	10,090	9,943	10,363	9,987	10,448
		<b>Total</b>	<b>163,760</b>	<b>171,030</b>	<b>169,565</b>	<b>176,368</b>	<b>170,367</b>	<b>177,751</b>

<sup>1</sup> Refer to methodological note 8.

<sup>2</sup> As from January 2015, data for the public sector takes into account the revisions to the economic activity classification of government entities, departments and ministries. For further details refer to methodological note 6.

<sup>3</sup> Public sector employment in April 2016 stood at 44,381, with the full-time equivalent (FTE) calculated at 41,769.

Table 3. Part-time employment classified by period and economic activity ...

NACE division	Economic activity	Average 2014	Average 2015 (revised)	March 2015	March 2016	April 2015 (revised)	April 2016
<b>01-03</b>	<b>Agriculture, forestry and fishing</b>	<b>2,230</b>	<b>2,201</b>	<b>2,183</b>	<b>2,183</b>	<b>2,182</b>	<b>2,183</b>
01	Crop and animal production, hunting and related service activities	1,577	1,559	1,563	1,562	1,556	1,560
02	Forestry and logging	-	-	-	-	-	-
03	Fishing and aquaculture	653	642	620	621	626	623
<b>05-09</b>	<b>Mining and quarrying</b>	<b>31</b>	<b>27</b>	<b>29</b>	<b>30</b>	<b>28</b>	<b>30</b>
05	Mining of coal and lignite	-	-	-	-	-	-
06	Extraction of crude petroleum and natural gas	-	-	-	-	-	-
07	Mining of metal ores	-	-	-	-	-	-
08	Other mining and quarrying	29	26	26	28	26	28
09	Mining support service activities	2	1	3	2	2	2
<b>10-33</b>	<b>Manufacturing</b>	<b>2,882</b>	<b>3,010</b>	<b>2,892</b>	<b>3,012</b>	<b>3,326</b>	<b>3,420</b>
10	Manufacture of food products	809	839	820	792	1,043	1,044
11	Manufacture of beverages	72	73	68	68	67	69
12	Manufacture of tobacco products	2	3	2	3	3	3
13	Manufacture of textiles	36	34	32	38	32	38
14	Manufacture of wearing apparel	97	104	99	96	99	99
15	Manufacture of leather and related products	10	8	8	9	7	9
16	Manufacture of wood and of products of wood and cork, except furniture; manufacture of articles of straw and plaiting materials	56	61	57	65	59	64
17	Manufacture of paper and paper products	20	26	27	25	27	26
18	Printing and reproduction of recorded media	156	154	151	153	146	149
19	Manufacture of coke and refined petroleum products	1	2	2	2	2	1
20	Manufacture of chemicals and chemical products	42	55	52	56	51	53
21	Manufacture of basic pharmaceutical products and pharmaceutical preparations	29	33	31	37	36	39
22	Manufacture of rubber and plastic products	112	126	120	138	121	137
23	Manufacture of other non-metallic mineral products	143	137	137	142	136	143
24	Manufacture of basic metals	36	47	50	55	51	59
25	Manufacture of fabricated metal products, except machinery and equipment	241	236	230	233	232	230
26	Manufacture of computer, electronic and optical products	72	77	78	81	77	74
27	Manufacture of electrical equipment	72	72	67	83	67	84
28	Manufacture of machinery and equipment n.e.c.	43	44	38	43	43	45
29	Manufacture of motor vehicles, trailers and semi-trailers	77	94	79	106	83	107
30	Manufacture of other transport equipment	30	36	32	47	32	47
31	Manufacture of furniture	338	325	304	339	313	343
32	Other manufacturing	238	244	243	216	424	371
33	Repair and installation of machinery and equipment	150	180	165	185	175	186
<b>35</b>	<b>Electricity, gas, steam and air conditioning supply</b>	<b>8</b>	<b>4</b>	<b>1</b>	<b>3</b>	<b>1</b>	<b>7</b>
<b>36-39</b>	<b>Water supply; sewerage, waste management and remediation activities</b>	<b>171</b>	<b>174</b>	<b>163</b>	<b>173</b>	<b>164</b>	<b>175</b>
36	Water collection, treatment and supply	23	34	21	25	21	27
37	Sewerage	3	3	3	3	3	3
38	Waste collection, treatment and disposal activities; materials recovery	138	131	134	140	135	140
39	Remediation activities and other waste management services	7	6	5	5	5	5

... Table 3. Part-time employment classified by period and economic activity

NACE division	Economic activity	Average 2014	Average 2015 (revised)	March 2015	March 2016	April 2015 (revised)	April 2016
<b>41-43</b>	<b>Construction</b>	<b>1,509</b>	<b>1,545</b>	<b>1,493</b>	<b>1,625</b>	<b>1,512</b>	<b>1,650</b>
41	Construction of buildings	421	434	422	460	435	463
42	Civil engineering	64	70	63	77	64	82
43	Specialised construction activities	1,024	1,041	1,008	1,088	1,013	1,105
<b>45-47</b>	<b>Wholesale and retail trade; repair of motor vehicles and motorcycles</b>	<b>9,743</b>	<b>10,144</b>	<b>9,849</b>	<b>10,546</b>	<b>9,830</b>	<b>10,582</b>
45	Wholesale and retail trade and repair of motor vehicles and motorcycles	639	653	657	658	637	644
46	Wholesale trade, except of motor vehicles and motorcycles	2,272	2,397	2,319	2,572	2,198	2,439
47	Retail trade, except of motor vehicles and motorcycles	6,832	7,094	6,873	7,316	6,995	7,499
<b>49-53</b>	<b>Transportation and storage</b>	<b>2,159</b>	<b>2,366</b>	<b>2,248</b>	<b>2,534</b>	<b>2,253</b>	<b>2,517</b>
49	Land transport and transport via pipelines	1,093	1,302	1,244	1,423	1,227	1,389
50	Water transport	135	137	126	133	127	136
51	Air transport	246	286	203	365	200	400
52	Warehousing and support activities for transportation	473	433	474	399	495	400
53	Postal and courier activities	212	208	201	214	204	192
<b>55-56</b>	<b>Accommodation and food service activities</b>	<b>9,863</b>	<b>10,249</b>	<b>9,528</b>	<b>10,416</b>	<b>10,299</b>	<b>11,102</b>
55	Accommodation	3,578	3,513	3,304	3,447	3,405	3,499
56	Food and beverage service activities	6,285	6,736	6,224	6,969	6,894	7,603
<b>58-63</b>	<b>Information and communication</b>	<b>1,265</b>	<b>1,359</b>	<b>1,300</b>	<b>1,406</b>	<b>1,351</b>	<b>1,417</b>
58	Publishing activities	128	141	131	152	141	162
59	Motion picture, video and television programme production, sound recording and music publishing activities	253	255	250	263	252	267
60	Programming and broadcasting activities	283	269	273	229	283	233
61	Telecommunications	105	167	146	179	171	189
62	Computer programming, consultancy and related activities	467	489	468	534	466	513
63	Information service activities	29	38	32	49	38	53
<b>64-66</b>	<b>Financial and insurance activities</b>	<b>904</b>	<b>1,043</b>	<b>990</b>	<b>1,073</b>	<b>990</b>	<b>1,018</b>
64	Financial service activities, except insurance and pension funding	482	593	556	641	550	601
65	Insurance, reinsurance and pension funding, except compulsory social security	161	172	162	164	171	173
66	Activities auxiliary to financial services and insurance activities	261	278	272	268	269	244
<b>68</b>	<b>Real estate activities</b>	<b>576</b>	<b>539</b>	<b>478</b>	<b>507</b>	<b>474</b>	<b>490</b>
<b>69-75</b>	<b>Professional, scientific and technical activities</b>	<b>3,399</b>	<b>3,649</b>	<b>3,515</b>	<b>3,838</b>	<b>3,423</b>	<b>3,712</b>
69	Legal and accounting activities	838	918	877	965	875	964
70	Activities of head offices; management consultancy activities	1,226	1,290	1,258	1,334	1,277	1,365
71	Architectural and engineering activities; technical testing and analysis	512	577	556	655	434	493
72	Scientific research and development	22	28	27	27	27	28
73	Advertising and market research	438	444	428	451	430	445
74	Other professional, scientific and technical activities	344	372	351	381	362	392
75	Veterinary activities	19	20	18	25	18	25

... Table 3. Part-time employment classified by period and economic activity

NACE division	Economic activity	Average 2014	Average 2015 (revised)	March 2015	March 2016	April 2015 (revised)	April 2016
<b>77-82</b>	<b>Administrative and support service activities</b>	<b>5,708</b>	<b>5,777</b>	<b>5,687</b>	<b>5,891</b>	<b>4,953</b>	<b>5,293</b>
77	Rental and leasing activities	552	565	544	590	567	631
78	Employment activities	1,425	1,353	1,358	1,336	631	677
79	Travel agency, tour operator and other reservation service and related activities	545	576	547	611	529	566
80	Security and investigation activities	1,199	1,341	1,322	1,326	1,287	1,317
81	Services to buildings and landscape activities	1,366	1,220	1,227	1,233	1,171	1,218
82	Office administrative, office support and other business support activities	621	722	689	795	768	884
<b>84</b>	<b>Public administration and defence; compulsory social security</b>	<b>2,755</b>	<b>2,892</b>	<b>2,600</b>	<b>2,582</b>	<b>2,539</b>	<b>2,491</b>
<b>85</b>	<b>Education</b>	<b>5,653</b>	<b>5,645</b>	<b>5,394</b>	<b>5,452</b>	<b>5,372</b>	<b>5,436</b>
<b>86-88</b>	<b>Human health and social work activities</b>	<b>3,375</b>	<b>3,592</b>	<b>3,375</b>	<b>3,563</b>	<b>3,361</b>	<b>3,520</b>
86	Human health activities	1,149	1,174	1,165	1,090	1,142	1,052
87	Residential care activities	1,579	1,738	1,664	1,850	1,652	1,831
88	Social work activities without accommodation	647	680	546	623	567	637
<b>90-93</b>	<b>Arts, entertainment and recreation</b>	<b>1,583</b>	<b>1,773</b>	<b>1,700</b>	<b>1,939</b>	<b>1,795</b>	<b>2,052</b>
90	Creative, arts and entertainment activities	419	469	440	490	507	536
91	Libraries, archives, museums and other cultural activities	106	121	122	126	123	124
92	Gambling and betting activities	358	417	396	455	402	479
93	Sports activities and amusement and recreation activities	700	766	742	868	763	913
<b>94-96</b>	<b>Other service activities</b>	<b>2,029</b>	<b>2,160</b>	<b>2,077</b>	<b>2,232</b>	<b>2,096</b>	<b>2,255</b>
94	Activities of membership organisations	530	547	536	550	539	554
95	Repair of computers and personal and household goods	154	153	155	159	154	157
96	Other personal service activities	1,345	1,460	1,386	1,523	1,403	1,544
<b>97-98</b>	<b>Activities of households as employers; undifferentiated goods- and services-producing activities of households for own use</b>	<b>16</b>	<b>18</b>	<b>20</b>	<b>16</b>	<b>18</b>	<b>16</b>
97	Activities of households as employers of domestic personnel	14	16	18	14	16	14
98	Undifferentiated goods- and services-producing activities of private households for own use	2	2	2	2	2	2
<b>99</b>	<b>Activities of extraterritorial organisations and bodies</b>	<b>25</b>	<b>23</b>	<b>25</b>	<b>22</b>	<b>23</b>	<b>22</b>
<b>01-99</b>	<b>Total</b>	<b>55,884</b>	<b>58,190</b>	<b>55,547</b>	<b>59,043</b>	<b>55,990</b>	<b>59,388</b>

Table 4. Part-time employment classified by period, economic activity, part-time job type and category ...

NACE division	Economic activity	Type of part-time job	Category	Average 2014	Average 2015 (revised)	March 2015	March 2016	April 2015 (revised)	April 2016
01-03	Agriculture, forestry and fishing	Part-timers holding a full-time job	Males	1,234	1,209	1,211	1,187	1,208	1,180
			Females	61	61	60	60	60	60
			Malta	994	972	976	966	974	959
			Gozo	301	298	295	281	294	281
			<b>Total</b>	<b>1,295</b>	<b>1,270</b>	<b>1,271</b>	<b>1,247</b>	<b>1,268</b>	<b>1,240</b>
		Part-time as a primary job	Males	771	765	750	772	751	775
			Females	164	166	162	164	163	168
			Malta	777	773	759	783	759	786
			Gozo	158	158	153	153	155	157
			<b>Total</b>	<b>935</b>	<b>931</b>	<b>912</b>	<b>936</b>	<b>914</b>	<b>943</b>
		<b>Total</b>	<b>2,230</b>	<b>2,201</b>	<b>2,183</b>	<b>2,183</b>	<b>2,182</b>	<b>2,183</b>	
05-09	Mining and quarrying	Part-timers holding a full-time job	Males	14	13	15	16	14	16
			Females	-	-	-	-	-	-
			Malta	3	2	4	5	3	5
			Gozo	11	11	11	11	11	11
		<b>Total</b>	<b>14</b>	<b>13</b>	<b>15</b>	<b>16</b>	<b>14</b>	<b>16</b>	
		Part-time as a primary job	Males	14	11	11	11	11	11
			Females	3	3	3	3	3	3
			Malta	14	11	11	11	11	11
			Gozo	3	3	3	3	3	3
		<b>Total</b>	<b>17</b>	<b>14</b>	<b>14</b>	<b>14</b>	<b>14</b>	<b>14</b>	
		<b>Total</b>	<b>31</b>	<b>27</b>	<b>29</b>	<b>30</b>	<b>28</b>	<b>30</b>	
10-33	Manufacturing	Part-timers holding a full-time job	Males	914	971	934	979	1,097	1,144
			Females	201	207	197	216	249	276
			Malta	1,001	1,062	1,024	1,086	1,236	1,307
			Gozo	114	116	107	109	110	113
			<b>Total</b>	<b>1,115</b>	<b>1,178</b>	<b>1,131</b>	<b>1,195</b>	<b>1,346</b>	<b>1,420</b>
		Part-time as a primary job	Males	907	930	888	932	975	999
			Females	860	902	873	885	1,005	1,001
			Malta	1,649	1,713	1,649	1,701	1,865	1,880
			Gozo	118	119	112	116	115	120
			<b>Total</b>	<b>1,767</b>	<b>1,832</b>	<b>1,761</b>	<b>1,817</b>	<b>1,980</b>	<b>2,000</b>
		<b>Total</b>	<b>2,882</b>	<b>3,010</b>	<b>2,892</b>	<b>3,012</b>	<b>3,326</b>	<b>3,420</b>	
35	Electricity, gas, steam and air conditioning supply	Part-timers holding a full-time job	Males	3	1	-	-	-	1
			Females	-	-	-	-	-	-
			Malta	3	1	-	-	-	1
			Gozo	-	-	-	-	-	-
		<b>Total</b>	<b>3</b>	<b>1</b>	<b>-</b>	<b>-</b>	<b>-</b>	<b>1</b>	
		Part-time as a primary job	Males	3	2	-	-	-	3
			Females	2	1	1	3	1	3
			Malta	5	3	1	3	1	5
			Gozo	-	-	-	-	-	1
			<b>Total</b>	<b>5</b>	<b>3</b>	<b>1</b>	<b>3</b>	<b>1</b>	<b>6</b>
		<b>Total</b>	<b>8</b>	<b>4</b>	<b>1</b>	<b>3</b>	<b>1</b>	<b>7</b>	

... Table 4. Part-time employment classified by period, economic activity, part-time job type and category

NACE division	Economic activity	Type of part-time job	Category	Average 2014	Average 2015 (revised)	March 2015	March 2016	April 2015 (revised)	April 2016
36-39	Water supply; sewerage, waste management and remediation activities	Part-timers holding a full-time job	Males	52	52	51	51	52	50
			Females	7	9	9	10	9	10
			Malta	52	55	54	53	55	53
			Gozo	7	6	6	8	6	7
			<b>Total</b>	<b>59</b>	<b>61</b>	<b>60</b>	<b>61</b>	<b>61</b>	<b>60</b>
		Part-time as a primary job	Males	70	66	63	71	63	74
			Females	42	47	40	41	40	41
			Malta	106	107	98	101	98	104
			Gozo	6	6	5	11	5	11
			<b>Total</b>	<b>112</b>	<b>113</b>	<b>103</b>	<b>112</b>	<b>103</b>	<b>115</b>
		<b>Total</b>			<b>171</b>	<b>174</b>	<b>163</b>	<b>173</b>	<b>164</b>
41-43	Construction	Part-timers holding a full-time job	Males	720	736	717	775	724	787
			Females	53	70	56	88	60	89
			Malta	598	634	605	696	616	708
			Gozo	175	172	168	167	168	168
			<b>Total</b>	<b>773</b>	<b>806</b>	<b>773</b>	<b>863</b>	<b>784</b>	<b>876</b>
		Part-time as a primary job	Males	567	570	561	596	566	605
			Females	169	169	159	166	162	169
			Malta	629	635	623	660	630	669
			Gozo	107	104	97	102	98	105
			<b>Total</b>	<b>736</b>	<b>739</b>	<b>720</b>	<b>762</b>	<b>728</b>	<b>774</b>
		<b>Total</b>			<b>1,509</b>	<b>1,545</b>	<b>1,493</b>	<b>1,625</b>	<b>1,512</b>
45-47	Wholesale and retail trade; repair of motor vehicles and motorcycles	Part-timers holding a full-time job	Males	2,146	2,201	2,153	2,275	2,129	2,273
			Females	1,048	1,181	1,102	1,248	1,089	1,256
			Malta	2,905	3,085	2,984	3,214	2,943	3,223
			Gozo	289	297	271	309	275	306
			<b>Total</b>	<b>3,194</b>	<b>3,382</b>	<b>3,255</b>	<b>3,523</b>	<b>3,218</b>	<b>3,529</b>
		Part-time as a primary job	Males	1,972	2,059	1,996	2,152	2,006	2,151
			Females	4,577	4,703	4,598	4,871	4,606	4,902
			Malta	6,096	6,309	6,155	6,569	6,176	6,603
			Gozo	453	453	439	454	436	450
			<b>Total</b>	<b>6,549</b>	<b>6,762</b>	<b>6,594</b>	<b>7,023</b>	<b>6,612</b>	<b>7,053</b>
		<b>Total</b>			<b>9,743</b>	<b>10,144</b>	<b>9,849</b>	<b>10,546</b>	<b>9,830</b>
49-53	Transportation and storage	Part-timers holding a full-time job	Males	772	910	870	980	883	986
			Females	116	126	113	156	124	167
			Malta	830	973	925	1,067	946	1,082
			Gozo	58	63	58	69	61	71
			<b>Total</b>	<b>888</b>	<b>1,036</b>	<b>983</b>	<b>1,136</b>	<b>1,007</b>	<b>1,153</b>
		Part-time as a primary job	Males	822	885	831	943	816	922
			Females	449	445	434	455	430	442
			Malta	1,205	1,261	1,202	1,329	1,187	1,293
			Gozo	66	69	63	69	59	71
			<b>Total</b>	<b>1,271</b>	<b>1,330</b>	<b>1,265</b>	<b>1,398</b>	<b>1,246</b>	<b>1,364</b>
		<b>Total</b>			<b>2,159</b>	<b>2,366</b>	<b>2,248</b>	<b>2,534</b>	<b>2,253</b>



... Table 4. Part-time employment classified by period, economic activity, part-time job type and category

NACE division	Economic activity	Type of part-time job	Category	Average 2014	Average 2015 (revised)	March 2015	March 2016	April 2015 (revised)	April 2016
55-56	Accommodation and food service activities	Part-timers holding a full-time job	Males	2,352	2,469	2,350	2,521	2,617	2,752
			Females	935	1,022	933	1,134	1,071	1,236
			Malta	3,029	3,228	3,047	3,410	3,444	3,731
			Gozo	258	263	236	245	244	257
			<b>Total</b>	<b>3,287</b>	<b>3,491</b>	<b>3,283</b>	<b>3,655</b>	<b>3,688</b>	<b>3,988</b>
			<b>Total</b>	<b>3,079</b>	<b>3,209</b>	<b>2,921</b>	<b>3,230</b>	<b>3,112</b>	<b>3,424</b>
		Part-time as a primary job	Females	3,497	3,549	3,324	3,531	3,499	3,690
			Malta	6,101	6,265	5,834	6,352	6,172	6,696
			Gozo	475	493	411	409	439	418
			<b>Total</b>	<b>6,576</b>	<b>6,758</b>	<b>6,245</b>	<b>6,761</b>	<b>6,611</b>	<b>7,114</b>
			<b>Total</b>	<b>9,863</b>	<b>10,249</b>	<b>9,528</b>	<b>10,416</b>	<b>10,299</b>	<b>11,102</b>
			<b>Total</b>						
58-63	Information and communication	Part-timers holding a full-time job	Males	468	486	471	494	472	496
			Females	165	174	166	175	165	178
			Malta	602	626	606	636	606	639
			Gozo	31	34	31	33	31	35
			<b>Total</b>	<b>633</b>	<b>660</b>	<b>637</b>	<b>669</b>	<b>637</b>	<b>674</b>
			<b>Total</b>	<b>350</b>	<b>383</b>	<b>365</b>	<b>413</b>	<b>384</b>	<b>410</b>
		Part-time as a primary job	Females	282	316	298	324	330	333
			Malta	612	670	639	701	689	708
			Gozo	20	29	24	36	25	35
			<b>Total</b>	<b>632</b>	<b>699</b>	<b>663</b>	<b>737</b>	<b>714</b>	<b>743</b>
			<b>Total</b>	<b>1,265</b>	<b>1,359</b>	<b>1,300</b>	<b>1,406</b>	<b>1,351</b>	<b>1,417</b>
			<b>Total</b>						
64-66	Financial and insurance activities	Part-timers holding a full-time job	Males	205	266	253	271	272	262
			Females	100	118	115	122	113	117
			Malta	296	374	357	381	373	367
			Gozo	9	10	11	12	12	12
			<b>Total</b>	<b>305</b>	<b>384</b>	<b>368</b>	<b>393</b>	<b>385</b>	<b>379</b>
			<b>Total</b>	<b>202</b>	<b>239</b>	<b>219</b>	<b>246</b>	<b>213</b>	<b>237</b>
		Part-time as a primary job	Females	397	420	403	434	392	402
			Malta	586	648	611	671	594	629
			Gozo	13	11	11	9	11	10
			<b>Total</b>	<b>599</b>	<b>659</b>	<b>622</b>	<b>680</b>	<b>605</b>	<b>639</b>
			<b>Total</b>	<b>904</b>	<b>1,043</b>	<b>990</b>	<b>1,073</b>	<b>990</b>	<b>1,018</b>
			<b>Total</b>						
68	Real estate activities	Part-timers holding a full-time job	Males	178	173	157	156	158	143
			Females	111	81	67	70	65	70
			Malta	236	202	173	182	172	170
			Gozo	53	52	51	44	51	43
			<b>Total</b>	<b>289</b>	<b>254</b>	<b>224</b>	<b>226</b>	<b>223</b>	<b>213</b>
			<b>Total</b>	<b>104</b>	<b>103</b>	<b>89</b>	<b>102</b>	<b>88</b>	<b>100</b>
		Part-time as a primary job	Females	183	182	165	179	163	177
			Malta	254	251	221	245	217	242
			Gozo	33	34	33	36	34	35
			<b>Total</b>	<b>287</b>	<b>285</b>	<b>254</b>	<b>281</b>	<b>251</b>	<b>277</b>
			<b>Total</b>	<b>576</b>	<b>539</b>	<b>478</b>	<b>507</b>	<b>474</b>	<b>490</b>
			<b>Total</b>						

... Table 4. Part-time employment classified by period, economic activity, part-time job type and category

NACE division	Economic activity	Type of part-time job	Category	Average 2014	Average 2015 (revised)	March 2015	March 2016	April 2015 (revised)	April 2016
69-75	Professional, scientific and technical activities	Part-timers holding a full-time job	Males	994	1,071	1,041	1,154	1,011	1,112
			Females	542	593	581	635	582	620
			Malta	1,455	1,577	1,539	1,697	1,507	1,633
			Gozo	81	87	83	92	86	99
			<b>Total</b>	<b>1,536</b>	<b>1,664</b>	<b>1,622</b>	<b>1,789</b>	<b>1,593</b>	<b>1,732</b>
			<b>Total</b>	<b>1,536</b>	<b>1,664</b>	<b>1,622</b>	<b>1,789</b>	<b>1,593</b>	<b>1,732</b>
		Part-time as a primary job	Males	761	852	786	911	784	911
			Females	1,102	1,133	1,107	1,138	1,046	1,069
			Malta	1,803	1,907	1,825	1,978	1,754	1,905
			Gozo	60	78	68	71	76	75
			<b>Total</b>	<b>1,863</b>	<b>1,985</b>	<b>1,893</b>	<b>2,049</b>	<b>1,830</b>	<b>1,980</b>
			<b>Total</b>	<b>1,863</b>	<b>1,985</b>	<b>1,893</b>	<b>2,049</b>	<b>1,830</b>	<b>1,980</b>
<b>Total</b>	<b>3,399</b>	<b>3,649</b>	<b>3,515</b>	<b>3,838</b>	<b>3,423</b>	<b>3,712</b>			
77-82	Administrative and support service activities	Part-timers holding a full-time job	Males	1,908	1,935	1,940	1,922	1,595	1,676
			Females	659	715	684	730	553	628
			Malta	2,485	2,552	2,523	2,550	2,049	2,189
			Gozo	82	98	101	102	99	115
			<b>Total</b>	<b>2,567</b>	<b>2,650</b>	<b>2,624</b>	<b>2,652</b>	<b>2,148</b>	<b>2,304</b>
			<b>Total</b>	<b>2,567</b>	<b>2,650</b>	<b>2,624</b>	<b>2,652</b>	<b>2,148</b>	<b>2,304</b>
		Part-time as a primary job	Males	1,341	1,370	1,301	1,383	1,208	1,281
			Females	1,800	1,757	1,762	1,856	1,597	1,708
			Malta	3,051	3,020	2,962	3,099	2,700	2,855
			Gozo	90	107	101	140	105	134
			<b>Total</b>	<b>3,141</b>	<b>3,127</b>	<b>3,063</b>	<b>3,239</b>	<b>2,805</b>	<b>2,989</b>
			<b>Total</b>	<b>3,141</b>	<b>3,127</b>	<b>3,063</b>	<b>3,239</b>	<b>2,805</b>	<b>2,989</b>
<b>Total</b>	<b>5,708</b>	<b>5,777</b>	<b>5,687</b>	<b>5,891</b>	<b>4,953</b>	<b>5,293</b>			
84	Public administration and defence; compulsory social security	Part-timers holding a full-time job	Males	407	431	415	420	372	382
			Females	576	639	585	544	588	534
			Malta	876	962	903	871	865	826
			Gozo	107	108	97	93	95	90
			<b>Total</b>	<b>983</b>	<b>1,070</b>	<b>1,000</b>	<b>964</b>	<b>960</b>	<b>916</b>
			<b>Total</b>	<b>983</b>	<b>1,070</b>	<b>1,000</b>	<b>964</b>	<b>960</b>	<b>916</b>
		Part-time as a primary job	Males	459	515	437	459	418	428
			Females	1,313	1,307	1,163	1,159	1,161	1,147
			Malta	1,608	1,654	1,451	1,480	1,434	1,439
			Gozo	164	168	149	138	145	136
			<b>Total</b>	<b>1,772</b>	<b>1,822</b>	<b>1,600</b>	<b>1,618</b>	<b>1,579</b>	<b>1,575</b>
			<b>Total</b>	<b>1,772</b>	<b>1,822</b>	<b>1,600</b>	<b>1,618</b>	<b>1,579</b>	<b>1,575</b>
<b>Total</b>	<b>2,755</b>	<b>2,892</b>	<b>2,600</b>	<b>2,582</b>	<b>2,539</b>	<b>2,491</b>			
85	Education	Part-timers holding a full-time job	Males	1,500	1,529	1,504	1,529	1,510	1,532
			Females	1,422	1,447	1,383	1,412	1,379	1,405
			Malta	2,783	2,828	2,745	2,795	2,746	2,790
			Gozo	139	148	142	146	143	147
			<b>Total</b>	<b>2,922</b>	<b>2,976</b>	<b>2,887</b>	<b>2,941</b>	<b>2,889</b>	<b>2,937</b>
			<b>Total</b>	<b>2,922</b>	<b>2,976</b>	<b>2,887</b>	<b>2,941</b>	<b>2,889</b>	<b>2,937</b>
		Part-time as a primary job	Males	1,019	972	907	898	895	896
			Females	1,712	1,697	1,600	1,613	1,588	1,603
			Malta	2,633	2,565	2,407	2,410	2,382	2,398
			Gozo	98	104	100	101	101	101
			<b>Total</b>	<b>2,731</b>	<b>2,669</b>	<b>2,507</b>	<b>2,511</b>	<b>2,483</b>	<b>2,499</b>
			<b>Total</b>	<b>2,731</b>	<b>2,669</b>	<b>2,507</b>	<b>2,511</b>	<b>2,483</b>	<b>2,499</b>
<b>Total</b>	<b>5,653</b>	<b>5,645</b>	<b>5,394</b>	<b>5,452</b>	<b>5,372</b>	<b>5,436</b>			

... Table 4. Part-time employment classified by period, economic activity, part-time job type and category

NACE division	Economic activity	Type of part-time job	Category	Average 2014	Average 2015 (revised)	March 2015	March 2016	April 2015 (revised)	April 2016
86-88	Human health and social work activities	Part-timers holding a full-time job	Males	547	546	517	543	501	529
			Females	828	862	765	833	747	803
			Malta	1,289	1,319	1,196	1,293	1,165	1,250
			Gozo	86	89	86	83	83	82
			<b>Total</b>	<b>1,375</b>	<b>1,408</b>	<b>1,282</b>	<b>1,376</b>	<b>1,248</b>	<b>1,332</b>
			<b>Total</b>	<b>1,375</b>	<b>1,408</b>	<b>1,282</b>	<b>1,376</b>	<b>1,248</b>	<b>1,332</b>
		Part-time as a primary job	Males	338	357	343	351	333	345
			Females	1,662	1,827	1,750	1,836	1,780	1,843
			Malta	1,894	2,046	1,963	2,036	1,979	2,036
			Gozo	106	138	130	151	134	152
			<b>Total</b>	<b>2,000</b>	<b>2,184</b>	<b>2,093</b>	<b>2,187</b>	<b>2,113</b>	<b>2,188</b>
			<b>Total</b>	<b>2,000</b>	<b>2,184</b>	<b>2,093</b>	<b>2,187</b>	<b>2,113</b>	<b>2,188</b>
<b>Total</b>	<b>3,375</b>	<b>3,592</b>	<b>3,375</b>	<b>3,563</b>	<b>3,361</b>	<b>3,520</b>			
90-93	Arts, entertainment and recreation	Part-timers holding a full-time job	Males	467	512	506	591	535	615
			Females	223	236	231	271	236	274
			Malta	646	706	695	815	729	839
			Gozo	44	42	42	47	42	50
			<b>Total</b>	<b>690</b>	<b>748</b>	<b>737</b>	<b>862</b>	<b>771</b>	<b>889</b>
			<b>Total</b>	<b>690</b>	<b>748</b>	<b>737</b>	<b>862</b>	<b>771</b>	<b>889</b>
		Part-time as a primary job	Males	405	489	451	517	475	555
			Females	488	536	512	560	549	608
			Malta	874	997	940	1,042	996	1,125
			Gozo	19	28	23	35	28	38
			<b>Total</b>	<b>893</b>	<b>1,025</b>	<b>963</b>	<b>1,077</b>	<b>1,024</b>	<b>1,163</b>
			<b>Total</b>	<b>893</b>	<b>1,025</b>	<b>963</b>	<b>1,077</b>	<b>1,024</b>	<b>1,163</b>
<b>Total</b>	<b>1,583</b>	<b>1,773</b>	<b>1,700</b>	<b>1,939</b>	<b>1,795</b>	<b>2,052</b>			
94-96	Other service activities	Part-timers holding a full-time job	Males	348	364	354	369	353	365
			Females	245	277	260	302	259	305
			Malta	546	593	567	630	566	629
			Gozo	47	48	47	41	46	41
			<b>Total</b>	<b>593</b>	<b>641</b>	<b>614</b>	<b>671</b>	<b>612</b>	<b>670</b>
			<b>Total</b>	<b>593</b>	<b>641</b>	<b>614</b>	<b>671</b>	<b>612</b>	<b>670</b>
		Part-time as a primary job	Males	414	435	420	439	427	448
			Females	1,022	1,084	1,043	1,122	1,057	1,137
			Malta	1,312	1,405	1,351	1,448	1,375	1,474
			Gozo	124	114	112	113	109	111
			<b>Total</b>	<b>1,436</b>	<b>1,519</b>	<b>1,463</b>	<b>1,561</b>	<b>1,484</b>	<b>1,585</b>
			<b>Total</b>	<b>1,436</b>	<b>1,519</b>	<b>1,463</b>	<b>1,561</b>	<b>1,484</b>	<b>1,585</b>
<b>Total</b>	<b>2,029</b>	<b>2,160</b>	<b>2,077</b>	<b>2,232</b>	<b>2,096</b>	<b>2,255</b>			
97-98	Activities of households as employers; undifferentiated goods- and services-producing activities of households for own use	Part-timers holding a full-time job	Males	3	3	3	2	3	2
			Females	2	2	2	2	2	2
			Malta	3	3	3	3	3	3
			Gozo	2	2	2	1	2	1
			<b>Total</b>	<b>5</b>	<b>5</b>	<b>5</b>	<b>4</b>	<b>5</b>	<b>4</b>
			<b>Total</b>	<b>5</b>	<b>5</b>	<b>5</b>	<b>4</b>	<b>5</b>	<b>4</b>
		Part-time as a primary job	Males	2	4	5	4	4	4
			Females	9	9	10	8	9	8
			Malta	10	12	14	12	12	12
			Gozo	1	1	1	-	1	-
			<b>Total</b>	<b>11</b>	<b>13</b>	<b>15</b>	<b>12</b>	<b>13</b>	<b>12</b>
			<b>Total</b>	<b>11</b>	<b>13</b>	<b>15</b>	<b>12</b>	<b>13</b>	<b>12</b>
<b>Total</b>	<b>16</b>	<b>18</b>	<b>20</b>	<b>16</b>	<b>18</b>	<b>16</b>			

... Table 4. Part-time employment classified by period, economic activity, part-time job type and category

NACE division	Economic activity	Type of part-time job	Category	Average 2014	Average 2015 (revised)	March 2015	March 2016	April 2015 (revised)	April 2016		
99	Activities of extraterritorial organisations and bodies	Part-timers holding a full-time job	Males	2	1	1	1	1	1		
			Females	2	1	1	1	1	1		
			Malta	4	2	2	2	2	2		
			Gozo	-	-	-	-	-	-		
			<b>Total</b>	<b>4</b>	<b>2</b>	<b>2</b>	<b>2</b>	<b>2</b>	<b>2</b>		
		Part-time as a primary job	Males	4	3	4	2	3	2		
			Females	17	18	19	18	18	18		
			Malta	21	21	23	20	21	20		
			Gozo	-	-	-	-	-	-		
			<b>Total</b>	<b>21</b>	<b>21</b>	<b>23</b>	<b>20</b>	<b>21</b>	<b>20</b>		
		<b>Total</b>									
				25	23	25	22	23	22		
01-99	Total	Part-timers holding a full-time job	Males	15,234	15,879	15,463	16,236	15,507	16,304		
			Females	7,296	7,821	7,310	8,009	7,352	8,031		
			Malta	20,636	21,756	20,928	22,352	21,000	22,406		
			Gozo	1,894	1,944	1,845	1,893	1,859	1,929		
		<b>Total</b>	<b>22,530</b>	<b>23,700</b>	<b>22,773</b>	<b>24,245</b>	<b>22,859</b>	<b>24,335</b>			
		Part-time as a primary job	Males	13,604	14,219	13,348	14,432	13,532	14,581		
			Females	19,750	20,271	19,426	20,366	19,599	20,472		
			Malta	31,240	32,273	30,739	32,651	31,052	32,890		
			Gozo	2,114	2,217	2,035	2,147	2,079	2,163		
			<b>Total</b>	<b>33,354</b>	<b>34,490</b>	<b>32,774</b>	<b>34,798</b>	<b>33,131</b>	<b>35,053</b>		
		<b>Total part-timers</b>									
						55,884	58,190	55,547	59,043	55,990	59,388

## Methodological Notes

1. The data provided in this release, including the relevant classifications, is based on administrative records held at the JobsPlus. The information contained in this release may be subject to revision. Monthly data is revised in the subsequent year.
2. The National Statistics Office publishes, on a quarterly basis, another set of statistics on employment and unemployment based on the Labour Force Survey (LFS). When compiling LFS statistics, the NSO adopts the International Labour Organisation (ILO) definition, an internationally agreed definition on employment and unemployment. This definition has also been adopted by Eurostat and is used by all EU Member States. More details regarding the methodology used for the compilation of employment and unemployment statistics from the LFS may be found in quarterly LFS news releases.

Since JobsPlus records and LFS results measure two different facets of employment and unemployment, these are not comparable. Users are therefore cautioned that these two sets of statistics should not be used interchangeably.

3. Full-time and part-time status is determined by the employer's declaration (or that made by a self-employed person) in the engagement form which is required to be sent to the JobsPlus upon commencement of employment.
4. Apprentices are included under their respective economic activity.

### 5. Definitions:

- **Labour Supply:** Full-time gainfully occupied population and the registered unemployed population.
- **Apprentices, trainees and students:** Includes apprentices, trainees, Junior College and University students in the summer work-phase, undergraduate trainees, and trainees with fixed contracts.
- **Regional employment:** Data on Malta/Gozo employment differs on the basis of economic sector. Accordingly, the data of the private sector depends on employee residence, whereas the data of the public sector depends on employer information of location of its employees.
- **Full-time equivalent (FTE):** Employment in full-time equivalent is a conversion method used to measure the number of employees according to the number of hours worked. When using FTE a full-time employee working a 40 hour week is equivalent to 1.0, whereas a person who works 20 hours per week is equivalent to 0.5. Table 2 of this release includes persons who work full-time, persons on a full-time with reduced hours basis and full-time employees who are on unpaid leave. When converting these figures into FTE, full-time employees are considered as 1 whereas persons working full-time with reduced hours or who are on unpaid leave are considered according to the hours worked. FTE data is currently available in respect of public sector employment and is based on the administrative records of the Public Administration and Human Resources Office (PAHRO) within the Office of the Prime Minister. FTE information for the private sector is not available.
- **Part 1 of the unemployment register:** Persons registering under Part 1 are either new job seekers who have left school, re-entrants into the labour market, or individuals who have been made redundant by their former employer.
- **Part 2 of the unemployment register:** Persons registering under Part 2 are either workers who have been dismissed from work due to disciplinary action, left work out of their own free will, refused work or training opportunities or were struck off the register after an inspection by the Law Enforcement personnel.

6. In 2015 JobsPlus adopted a revision in the economic activity classification of government entities, departments and ministries in collaboration with PAHRO. This implies that from January 2015 the economic activity of public sector entities and units is assigned according to the true activity of the unit and not according to the economic activity of the Ministry under which each unit is attached.
7. During the course of 2014 persons working with the public transport operator were shifted from the private sector to the public sector. Prior to 2014 and as from January 2015, those persons were considered to be part of the private sector.
8. Public sector employees working in the economic activity: electricity, gas, steam and air conditioning supply (NACE 35) have been reclassified to employment activities (NACE 78). In view of this reclassification, there was a shift in employment figures from the economic activity aggregate 'electricity, gas, steam and air conditioning supply' to the 'administrative and support service activities' aggregate. In line with other releases published by this Office, this reclassification was taken on board from August 2014 onwards.
9. With regard to employment in the public sector, users are strongly advised to take into account the shifts referred to in methodological notes 6, 7 and 8 when analysing data longitudinally.
10. More information relating to this news release may be accessed at:

Statistical concept: <http://nso.gov.mt/metadata/concepts.aspx>

Classifications: <http://nso.gov.mt/metadata/classificationdetails.aspx?id=NACE Rev. 2>