

22 November 2016 | 1100 hrs | 189/2016

In October, the number of persons registering for work stood at 3,166 compared to 4,916 in the corresponding month last year.

Registered Unemployed: October 2016

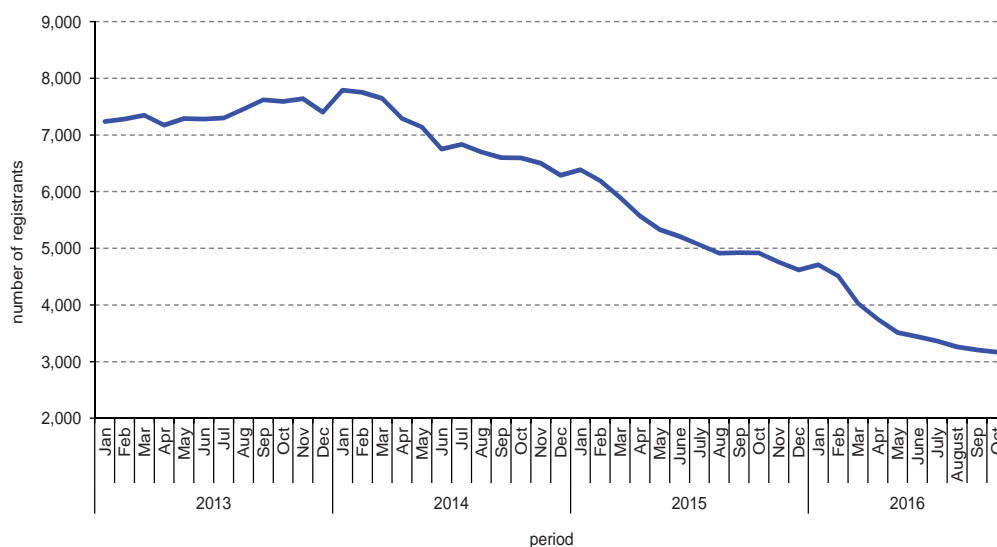
Data provided by Jobsplus for October indicate a decrease of 1,567 persons registering under Part I and a decrease of 183 among those registering under Part II of the unemployment register, when compared to October 2015 (Tables 5 and 8). Overall, decreases in registered unemployment were recorded among all age groups (Table 1).

When compared to October last year, registrants for work decreased irrespective of how long they had been registering. The largest decrease was recorded among persons who had been registering for over one year (Table 2). The number of persons with a disability who were registering for work also decreased by 23 to 367. Males accounted for 76.3 per cent of total registrants with a disability (Table 3).

The largest share of males and females on the unemployment register sought occupations as clerical support workers with 18.4 per cent and 33.0 per cent respectively (Table 4).

The registered unemployment rate in April 2016 stood at 2.1 per cent of the labour supply, (excluding part-time employment), and varied from 2.4 per cent among men to 1.5 per cent among women (Table 11) ■

Chart 1. Registered unemployment



Compiled by:

Unit C2: Labour Market Statistics

Further information on data:

**Ms Joslyn MAGRO
CUSCHIERI**
T. +356 2599 7662
E. joslyn.magro@gov.mt

Kindly indicate source when quoting from this release.
The advance release calendar may be consulted at www.nso.gov.mt

Issued by: **Dissemination Unit, National Statistics Office, Lascaris, Valletta VLT 2000, Malta.**
T. +356 2599 7219 F. +356 2599 7205 E. nso@gov.mt

<https://twitter.com/NSOMALTA/> | <https://www.facebook.com/nsomalta/>

Table 1. Persons registering for work under Part I and Part II of the unemployment register by region, age group and sex

Age group and sex	Annual average 2014			Annual average 2015			September 2015			September 2016			October 2015			October 2016		
	Malta	Gozo	Total	Malta	Gozo	Total	Malta	Gozo	Total	Malta	Gozo	Total	Malta	Gozo	Total	Malta	Gozo	Total
Under 20	309	24	333	179	25	204	176	21	197	85	16	101	166	19	185	104	24	128
Males	193	15	208	119	18	137	113	14	127	63	13	76	112	14	126	69	18	87
Females	116	9	125	60	7	67	63	7	70	22	3	25	54	5	59	35	6	41
20-24	584	102	686	332	87	419	299	83	382	170	47	217	304	77	381	194	50	244
Males	412	74	486	226	59	285	198	54	252	109	28	137	199	47	246	127	33	160
Females	172	28	200	106	28	134	101	29	130	61	19	80	105	30	135	67	17	84
25-29	593	97	690	391	90	481	345	87	432	210	65	275	335	93	428	204	62	266
Males	442	78	520	287	68	355	247	63	310	152	41	193	251	68	319	145	40	185
Females	151	19	170	104	22	126	98	24	122	58	24	82	84	25	109	59	22	81
30-44	2,029	269	2,298	1,457	255	1,712	1,339	237	1,576	853	187	1,040	1,334	244	1,578	829	185	1,014
Males	1,624	176	1,800	1,184	176	1,360	1,085	167	1,252	681	113	794	1,090	170	1,260	656	112	768
Females	405	93	498	273	79	352	254	70	324	172	74	246	244	74	318	173	73	246
45 and over	2,733	231	2,964	2,250	229	2,479	2,125	212	2,337	1,399	175	1,574	2,130	214	2,344	1,344	170	1,514
Males	2,134	146	2,280	1,703	138	1,841	1,588	132	1,720	1,006	93	1,099	1,614	128	1,742	980	96	1,076
Females	599	85	684	547	91	638	537	80	617	393	82	475	516	86	602	364	74	438
Total	6,248	723	6,971	4,609	686	5,295	4,284	640	4,924	2,717	490	3,207	4,269	647	4,916	2,675	491	3,166
Males	4,805	489	5,294	3,519	459	3,978	3,231	430	3,661	2,011	288	2,299	3,266	427	3,693	1,977	299	2,276
Females	1,443	234	1,677	1,090	227	1,317	1,053	210	1,263	706	202	908	1,003	220	1,223	698	192	890

Table 2. Persons registering for work under Part I and Part II of the unemployment register by duration of registration and sex

Duration of registration and sex	Annual average		September		October	
	2014	2015	2015	2016	2015	2016
Under 21 weeks	2,497	1,941	1,809	1,380	1,916	1,391
Males	1,722	1,355	1,246	943	1,352	954
Females	775	586	563	437	564	437
21 to 52 weeks	1,311	906	817	594	748	569
Males	985	650	578	418	535	402
Females	326	256	239	176	213	167
Over 1 year	3,163	2,448	2,298	1,233	2,252	1,206
Males	2,587	1,973	1,837	938	1,806	920
Females	576	475	461	295	446	286
Total	6,971	5,295	4,924	3,207	4,916	3,166
Males	5,294	3,978	3,661	2,299	3,693	2,276
Females	1,677	1,317	1,263	908	1,223	890

Table 3. Persons with a disability registering for work under Part I and Part II of the unemployment register by type of registration and sex

Registration type and sex	Annual average				September				October			
	2014		2015		2015		2016		2015		2016	
	No.	%	No.	%	No.	%	No.	%	No.	%	No.	%
Total (Part I)	483	100.0	386	100.0	384	100.0	373	100.0	375	100.0	365	100.0
Males	405	83.9	309	80.1	310	80.7	291	78.0	302	80.5	279	76.4
Females	78	16.1	77	19.9	74	19.3	82	22.0	73	19.5	86	23.6
Total (Part II)	10	100.0	12	100.0	14	100.0	2	100.0	15	100.0	2	100.0
Males	7	70.0	8	66.7	12	85.7	-	-	13	86.7	1	50.0
Females	3	30.0	4	33.3	2	14.3	2	100.0	2	13.3	1	50.0
Total (Parts I and II)	493	100.0	398	100.0	398	100.0	375	100.0	390	100.0	367	100.0
Males	412	83.6	317	79.6	322	80.9	291	77.6	315	80.8	280	76.3
Females	81	16.4	81	20.4	76	19.1	84	22.4	75	19.2	87	23.7

Table 4. Persons registering for work under Part I and Part II of the unemployment register by sex and main type of occupation sought

Occupation (ISCO 88)	Annual average 2014						Annual average 2014 (Part 1)						Annual average 2014 (Part 2)					
	Males		Females		Total		Males		Females		Total		Males		Females		Total	
	No.	%	No.	%	No.	%	No.	%	No.	%	No.	%	No.	%	No.	%	No.	%
Legislators, senior officials, and managers	251	4.7	92	5.5	343	4.9	227	4.5	80	5.2	307	4.7	24	7.9	12	9.0	36	8.3
Professionals	695	13.1	181	10.8	876	12.6	663	13.3	168	10.9	831	12.7	32	10.6	13	9.8	45	10.3
Technicians and associate professionals	509	9.6	451	26.9	960	13.8	466	9.3	414	26.8	880	13.5	43	14.2	37	27.8	80	18.4
Clerks	703	13.3	402	24.0	1,105	15.9	646	12.9	368	23.8	1,014	15.5	57	18.9	34	25.6	91	20.9
Service workers and shop and market sales workers	783	14.8	336	20.0	1,119	16.1	738	14.8	317	20.5	1,055	16.1	45	14.9	19	14.3	64	14.7
Skilled agricultural and fishery workers	258	4.9	1	0.1	259	3.7	252	5.0	1	0.1	253	3.9	6	2.0	-	-	6	1.4
Craft and related trade workers	901	17.0	26	1.6	927	13.3	859	17.2	24	1.6	883	13.5	42	13.9	2	1.5	44	10.1
Plant and machine operators and assemblers	447	8.4	84	5.0	531	7.6	422	8.5	76	4.9	498	7.6	25	8.3	8	6.0	33	7.6
Elementary occupations	747	14.1	104	6.2	851	12.2	719	14.4	96	6.2	815	12.5	28	9.3	8	6.0	36	8.3
Total	5,294	100.0	1,677	100.0	6,971	100.0	4,992	100.0	1,544	100.0	6,536	100.0	302	100.0	133	100.0	435	100.0

Occupation (ISCO 08)	Annual average 2015						September 2015						October 2015					
	Males		Females		Total		Males		Females		Total		Males		Females		Total	
	No.	%	No.	%	No.	%	No.	%	No.	%	No.	%	No.	%	No.	%	No.	%
Managers	207	5.2	77	5.8	284	5.4	203	5.5	78	6.2	281	5.7	200	5.4	78	6.4	278	5.7
Professionals	543	13.7	145	11.0	688	13.0	498	13.6	161	12.7	659	13.4	530	14.4	155	12.7	685	13.9
Technicians and associate professionals	377	9.5	292	22.2	669	12.6	343	9.4	265	21.0	608	12.3	327	8.9	250	20.4	577	11.7
Clerical support workers	585	14.7	356	27.0	941	17.8	537	14.7	341	27.0	878	17.8	544	14.7	345	28.2	889	18.1
Service workers and sales workers	520	13.1	292	22.2	812	15.3	464	12.7	278	22.0	742	15.1	462	12.5	257	21.0	719	14.6
Skilled agricultural, fishery and forestry workers	222	5.6	1	0.1	223	4.2	208	5.7	2	0.2	210	4.3	203	5.5	1	0.1	204	4.1
Crafts and related trade workers	710	17.8	30	2.3	740	14.0	657	17.9	23	1.8	680	13.8	674	18.3	28	2.3	702	14.3
Plant and machine operators and assemblers	299	7.5	57	4.3	356	6.7	278	7.6	56	4.4	334	6.8	271	7.3	50	4.1	321	6.5
Elementary occupations	515	12.9	67	5.1	582	11.0	473	12.9	59	4.7	532	10.8	482	13.1	59	4.8	541	11.0
Total	3,978	100.0	1,317	100.0	5,295	100.0	3,661	100.0	1,263	100.0	4,924	100.0	3,693	100.0	1,223	100.0	4,916	100.0

Occupation (ISCO 08)	September 2016						October 2016					
	Males		Females		Total		Males		Females		Total	
	No.	%	No.	%	No.	%	No.	%	No.	%	No.	%
Managers	120	5.2	41	4.5	161	5.0	121	5.3	38	4.3	159	5.0
Professionals	329	14.3	102	11.2	431	13.4	309	13.6	103	11.6	412	13.0
Technicians and associate professionals	247	10.7	152	16.7	399	12.4	239	10.5	156	17.5	395	12.5
Clerical support workers	413	18.0	299	32.9	712	22.2	419	18.4	294	33.0	713	22.5
Service workers and sales workers	282	12.3	236	26.0	518	16.2	297	13.0	225	25.3	522	16.5
Skilled agricultural, fishery and forestry workers	124	5.4	-	-	124	3.9	126	5.5	-	-	126	4.0
Crafts and related trade workers	392	17.1	8	0.9	400	12.5	388	17.0	8	0.9	396	12.5
Plant and machine operators and assemblers	173	7.5	41	4.5	214	6.7	170	7.5	39	4.4	209	6.6
Elementary occupations	219	9.5	29	3.2	248	7.7	207	9.1	27	3.0	234	7.4
Total	2,299	100.0	908	100	3,207	100.0	2,276	100.0	890	100.0	3,166	100.0

Table 5. Persons registering for work under Part I of the unemployment register by region, age group and sex

Age group and sex	Annual average 2014			Annual average 2015			September 2015			September 2016			October 2015			October 2016		
	Malta	Gozo	Total	Malta	Gozo	Total	Malta	Gozo	Total	Malta	Gozo	Total	Malta	Gozo	Total	Malta	Gozo	Total
Under 20	263	24	287	140	24	164	123	18	141	62	16	78	115	17	132	84	22	106
Males	167	15	182	94	17	111	82	12	94	45	13	58	81	13	94	55	16	71
Females	96	9	105	46	7	53	41	6	47	17	3	20	34	4	38	29	6	35
20-24	503	98	601	256	80	336	211	73	284	130	43	173	231	69	300	147	49	196
Males	356	72	428	173	54	227	143	49	192	85	26	111	156	44	200	96	33	129
Females	147	26	173	83	26	109	68	24	92	45	17	62	75	25	100	51	16	67
25-29	537	95	632	334	86	420	276	78	354	169	61	230	273	86	359	166	59	225
Males	404	76	480	248	64	312	203	55	258	122	39	161	203	62	265	121	38	159
Females	133	19	152	86	22	108	73	23	96	47	22	69	70	24	94	45	21	66
30-44	1,908	262	2,170	1,332	243	1,575	1,203	214	1,417	753	177	930	1,203	224	1,427	735	181	916
Males	1,539	173	1,712	1,087	167	1,254	988	149	1,137	600	105	705	995	155	1,150	581	110	691
Females	369	89	458	245	76	321	215	65	280	153	72	225	208	69	277	154	71	225
45 and over	2,619	227	2,846	2,141	220	2,361	2,025	192	2,217	1,334	165	1,499	2,031	198	2,229	1,274	163	1,437
Males	2,046	144	2,190	1,620	131	1,751	1,513	114	1,627	959	88	1,047	1,541	113	1,654	933	92	1,025
Females	573	83	656	521	89	610	512	78	590	375	77	452	490	85	575	341	71	412
Total	5,830	706	6,536	4,203	653	4,856	3,838	575	4,413	2,448	462	2,910	3,853	594	4,447	2,406	474	2,880
Males	4,512	480	4,992	3,222	433	3,655	2,929	379	3,308	1,811	271	2,082	2,976	387	3,363	1,786	289	2,075
Females	1,318	226	1,544	981	220	1,201	909	196	1,105	637	191	828	877	207	1,084	620	185	805

Table 6. Persons registering for work under Part I of the unemployment register by duration of registration and sex

Duration of registration and sex	Annual average		September		October	
	2014	2015	2015	2016	2015	2016
Under 21 weeks	2,091	1,528	1,323	1,101	1,480	1,117
Males	1,442	1,053	912	738	1,051	762
Females	649	475	411	363	429	355
21 to 52 weeks	1,282	880	792	576	715	557
Males	963	629	559	406	506	393
Females	319	251	233	170	209	164
Over 1 year	3,163	2,448	2,298	1,233	2,252	1,206
Males	2,587	1,973	1,837	938	1,806	920
Females	576	475	461	295	446	286
Total	6,536	4,856	4,413	2,910	4,447	2,880
Males	4,992	3,655	3,308	2,082	3,363	2,075
Females	1,544	1,201	1,105	828	1,084	805

Table 7. Persons registering for work under Part I of the unemployment register by sex and main type of occupation sought

Occupation (ISCO 08)	Annual average 2015						September 2015						October 2015					
	Males		Females		Total		Males		Females		Total		Males		Females		Total	
	No.	%	No.	%	No.	%	No.	%	No.	%	No.	%	No.	%	No.	%	No.	%
Managers	182	5.0	64	5.3	246	5.1	178	5.4	63	5.7	241	5.5	177	5.3	68	6.3	245	5.5
Professionals	502	13.7	129	10.7	631	13.0	457	13.8	139	12.6	596	13.5	488	14.5	136	12.5	624	14.0
Technicians and associate professionals	337	9.2	265	22.0	602	12.4	298	9.0	232	21.0	530	12.0	299	8.9	221	20.4	520	11.7
Clerical support workers	540	14.8	329	27.4	869	17.9	491	14.8	305	27.6	796	18.0	495	14.7	308	28.4	803	18.1
Service workers and sales workers	473	12.9	270	22.4	743	15.3	416	12.6	243	22.0	659	14.9	405	12.0	228	21.0	633	14.2
Skilled agricultural, fishery and forestry workers	211	5.8	1	0.1	212	4.4	194	5.9	2	0.2	196	4.4	189	5.6	1	0.1	190	4.3
Crafts and related trade workers	645	17.6	28	2.3	673	13.8	578	17.5	22	2.0	600	13.6	607	18.0	27	2.5	634	14.3
Plant and machine operators and assemblers	276	7.5	54	4.5	330	6.8	254	7.7	49	4.4	303	6.9	254	7.6	46	4.2	300	6.7
Elementary occupations	489	13.4	61	5.1	550	11.3	442	13.4	50	4.5	492	11.1	449	13.4	49	4.5	498	11.2
Total	3,655	100.0	1,201	100.0	4,856	100.0	3,308	100.0	1,105	100.0	4,413	100.0	3,363	100.0	1,084	100.0	4,447	100.0

Occupation (ISCO 08)	September 2016						October 2016					
	Males		Females		Total		Males		Females		Total	
	No.	%	No.	%	No.	%	No.	%	No.	%	No.	%
Managers	111	5.3	34	4.1	145	5.0	110	5.3	31	3.9	141	4.9
Professionals	302	14.5	93	11.2	395	13.6	289	13.9	92	11.4	381	13.2
Technicians and associate professionals	215	10.3	140	16.9	355	12.2	211	10.2	138	17.1	349	12.1
Clerical support workers	371	17.8	277	33.5	648	22.3	384	18.5	274	34	658	22.8
Service workers and sales workers	254	12.2	215	26.0	469	16.1	265	12.8	204	25.3	469	16.3
Skilled agricultural, fishery and forestry workers	120	5.8	-	-	120	4.1	119	5.7	-	-	119	4.1
Crafts and related trade workers	347	16.7	8	1.0	355	12.2	347	16.7	8	1.0	355	12.3
Plant and machine operators and assemblers	157	7.5	34	4.1	191	6.6	154	7.4	35	4.3	189	6.6
Elementary occupations	205	9.8	27	3.3	232	8.0	196	9.4	23	2.9	219	7.6
Total	2,082	100.0	828	100.0	2,910	100.0	2,075	100.0	805	100.0	2,880	100.0

Table 8. Persons registering for work under Part II of the unemployment register by region, age group and sex

Age group and sex	Annual average 2014			Annual average 2015			September 2015			September 2016			October 2015			October 2016		
	Malta	Gozo	Total	Malta	Gozo	Total	Malta	Gozo	Total	Malta	Gozo	Total	Malta	Gozo	Total	Malta	Gozo	Total
Under 20	46	-	46	39	1	40	53	3	56	23	-	23	51	2	53	20	2	22
Males	26	-	26	25	1	26	31	2	33	18	-	18	31	1	32	14	2	16
Females	20	-	20	14	-	14	22	1	23	5	-	5	20	1	21	6	-	6
20-24	81	4	85	76	7	83	88	10	98	40	4	44	73	8	81	47	1	48
Males	56	2	58	53	5	58	55	5	60	24	2	26	43	3	46	31	-	31
Females	25	2	27	23	2	25	33	5	38	16	2	18	30	5	35	16	1	17
25-29	56	2	58	57	4	61	69	9	78	41	4	45	62	7	69	38	3	41
Males	38	2	40	39	4	43	44	8	52	30	2	32	48	6	54	24	2	26
Females	18	-	18	18	-	18	25	1	26	11	2	13	14	1	15	14	1	15
30-44	121	7	128	125	12	137	136	23	159	100	10	110	131	20	151	94	4	98
Males	85	3	88	97	9	106	97	18	115	81	8	89	95	15	110	75	2	77
Females	36	4	40	28	3	31	39	5	44	19	2	21	36	5	41	19	2	21
45 and over	114	4	118	109	9	118	100	20	120	65	10	75	99	16	115	70	7	77
Males	88	2	90	83	7	90	75	18	93	47	5	52	73	15	88	47	4	51
Females	26	2	28	26	2	28	25	2	27	18	5	23	26	1	27	23	3	26
Total	418	17	435	406	33	439	446	65	511	269	28	297	416	53	469	269	17	286
Males	293	9	302	297	26	323	302	51	353	200	17	217	290	40	330	191	10	201
Females	125	8	133	109	7	116	144	14	158	69	11	80	126	13	139	78	7	85

Table 9. Persons registering for work under Part II of the unemployment register by duration of registration and sex

Duration of registration and sex	Annual average		September		October	
	2014	2015	2015	2016	2015	2016
Under 21 weeks	406	413	486	279	436	274
Males	280	302	334	205	301	192
Females	126	111	152	74	135	82
21 to 52 weeks	29	26	25	18	33	12
Males	22	21	19	12	29	9
Females	7	5	6	6	4	3
Total	435	439	511	297	469	286
Males	302	323	353	217	330	201
Females	133	116	158	80	139	85

Table 10. Persons registering for work under Part II of the unemployment register by sex and main type of occupation sought

Occupation (ISCO 08)	Annual average 2015						September 2015						October 2015					
	Males		Females		Total		Males		Females		Total		Males		Females		Total	
	No.	%	No.	%	No.	%	No.	%	No.	%	No.	%	No.	%	No.	%	No.	%
Managers	25	7.7	13	11.2	38	8.7	25	7.1	15	9.5	40	7.8	23	7.0	10	7.2	33	7.0
Professionals	41	12.7	16	13.8	57	13.0	41	11.6	22	13.9	63	12.3	42	12.7	19	13.7	61	13.0
Technicians and associate professionals	40	12.4	27	23.3	67	15.3	45	12.7	33	20.9	78	15.3	28	8.5	29	20.9	57	12.2
Clerical support workers	45	13.9	27	23.3	72	16.4	46	13.0	36	22.8	82	16.0	49	14.8	37	26.6	86	18.3
Service workers and sales workers	47	14.6	22	19.0	69	15.7	48	13.6	35	22.2	83	16.2	57	17.3	29	20.9	86	18.3
Skilled agricultural, fishery and forestry workers	11	3.4	-	-	11	2.5	14	4.0	-	-	14	2.7	14	4.2	-	-	-	-
Crafts and related trade workers	65	20.1	2	1.7	67	15.3	79	22.4	1	0.6	80	15.7	67	20.3	1	0.7	68	14.5
Plant and machine operators and assemblers	23	7.1	3	2.6	26	5.9	24	6.8	7	4.4	31	6.1	17	5.2	4	2.9	21	4.5
Elementary occupations	26	8.0	6	5.2	32	7.3	31	8.8	9	5.7	40	7.8	33	10.0	10	7.2	43	9.2
Total	323	100.0	116	100.0	439	100.0	353	100.0	158	100.0	511	100.0	330	100.0	139	100.0	469	100.0

Occupation (ISCO 08)	September 2016						October 2016					
	Males		Females		Total		Males		Females		Total	
	No.	%	No.	%	No.	%	No.	%	No.	%	No.	%
Managers	9	4.1	7	8.8	16	5.4	11	5.5	7	8.2	18	6.3
Professionals	27	12.4	9	11.3	36	12.1	20	10.0	11	12.9	31	10.8
Technicians and associate professionals	32	14.7	12	15.0	44	14.8	28	13.9	18	21.2	46	16.1
Clerical support workers	42	19.4	22	27.5	64	21.5	35	17.4	20	23.5	55	19.2
Service workers and sales workers	28	12.9	21	26.3	49	16.5	32	15.9	21	24.7	53	18.5
Skilled agricultural, fishery and forestry workers	4	1.8	-	-	4	1.3	7	3.5	-	-	7	2.4
Crafts and related trade workers	45	20.7	-	-	45	15.2	41	20.4	-	-	41	14.3
Plant and machine operators and assemblers	16	7.4	7	8.8	23	7.7	16	8.0	4	4.7	20	7.0
Elementary occupations	14	6.5	2	2.5	16	5.4	11	5.5	4	4.7	15	5.2
Total	217	100.0	80	100.0	297	100.0	201	100.0	85	100.0	286	100.0

Table 11. Registered unemployment (Part I and Part II) rate by sex

Sex	Annual average		March		April	
	2014	2015	2015	2016	2015	2016
Males	4.8	3.5	4.0	2.6	3.7	2.4
Females	2.8	2.1	2.3	1.6	2.2	1.5
Total	4.1	3.0	3.4	2.2	3.2	2.1

Note: Refer to methodological note 5.

Table 12. Registered unemployment (Part I) rate by age group and sex

Sex	Annual average		March		April	
	2014	2015	2015	2016	2015	2016
under 25						
Males	5.4	3.1	3.6	2.0	3.3	1.7
Females	3.2	1.9	2.3	1.1	2.1	1.1
Total	4.4	2.5	3.0	1.6	2.8	1.5
45 and over						
Males	5.2	4.1	4.4	3.2	4.2	3.0
Females	4.1	3.6	3.9	2.9	3.7	2.7
Total	4.9	3.9	4.3	3.1	4.1	2.9

Note: Refer to methodological note 5.

Table 13. Long-term registered unemployment (Part I) rate by sex

Sex	Annual average		March		April	
	2014	2015	2015	2016	2015	2016
Males	2.4	1.8	1.9	1.1	1.9	1.0
Females	0.9	0.7	0.8	0.5	0.8	0.5
Total	1.9	1.4	1.5	0.9	1.5	0.8

Note: Refer to methodological note 5.

Methodological Notes

1. This news release provides data on the number of persons registering for work with Jobsplus.

The National Statistics Office publishes, on a quarterly basis, another set of statistics on unemployment based on the Labour Force Survey (LFS). When compiling LFS statistics, the NSO adopts the International Labour Organisation (ILO) definition, an internationally agreed definition on unemployment. This definition has also been adopted by Eurostat and is used by all EU Member States. More details regarding the methodology used for the compilation of unemployment statistics from the LFS may be found in quarterly LFS news releases.

Since Jobsplus records and LFS results measure two different facets of unemployment, these are not comparable. Users are therefore cautioned that these two sets of statistics should not be used interchangeably.

2. As from the release published on 23 February 2016, annual average results are being worked out using a custom made application which takes into consideration more data points to work out the mean for the year. As a consequence there are slight differences between the average levels using the previous editions of this news release and the averages being displayed from this edition for the same time period.
3. The monthly unemployment rate from May 2016 do not feature in this release since administrative data on the labour supply from this month onwards are not yet available.
4. ISCO 08 is being used to classify occupations sought by the unemployed.
5. No updates to the registered unemployment rates are provided in this release since data on the gainfully occupied population for May 2016 has not been published yet.

6. **Definitions:**

- **Registered unemployment rate:** refers to the number of registered unemployed persons both under Part I and Part II as a percentage of the sum of the full-time gainfully occupied population and the total registered unemployed.
- In computing the registered unemployment rates for the purpose of this release, only the full-time gainfully occupied population is taken into consideration. Persons employed on a part-time basis are not taken into account in this computation.
- Registered unemployment rates are not comparable with LFS unemployment rates due to different sources of data collection. While LFS rates are based on sample survey estimates, registered unemployment rates are based on Jobsplus data (registered unemployment data and registered full time gainfully occupied).
- **Long-term registered unemployment rate:** refers to those people who have been registering for work for more than twelve months. The long-term unemployment rate is calculated by working out the number of the long-term unemployed under Part I as a percentage of the labour force.
- **Part I of the unemployment register:** those registering under Part I are either new job seekers who have left school, or re-entrants into the labour market, or individuals who have been made redundant by their former employers.
- **Part II of the unemployment register:** those registering under Part II are either workers who have been dismissed from work due to disciplinary action, left work out of their own free will, refused work or training opportunities or were struck off the register after an inspection by the Law Enforcement personnel.
- The **Labour Supply/Labour Force:** for the purpose of this release, the labour supply is the sum of the registered unemployed and the full-time gainfully occupied population (excluding part-time employment).

7. Percentage totals may not add up due to rounding.
8. The data on unemployment levels is final and not normally subject to revision.
9. More information relating to this news release may be accessed at:

Statistical Concepts: <http://nso.gov.mt/metadata/concepts.aspx>

Classification: <http://nso.gov.mt/metadata/classificationdetails.aspx?id=ISCO 2008>