

31 January 2017 | 1100 hrs | 019/2017

During the fourth quarter of 2016 there were five traffic fatalities.

## Road Traffic Accidents: Q4/2016

The number of reported traffic accidents in the fourth quarter reached 3,392, down by 9.0 per cent over the comparative period in 2015. This amount equals to an average rate of approximately 37 accidents per day. The Northern Harbour district registered the most accidents with 1,308 cases or 38.6 per cent of all accidents (Table 1).

Traffic casualties decreased by 12.6 per cent to 375 over 2015, of which 236 (62.9 per cent) involved drivers. The amount of slight injuries sustained by drivers was 207 and 26 cases were reported as grievous. Another 31 persons (14 passengers and 17 pedestrians) suffered grievous injuries. There were also 65 passengers and 41 pedestrians who were slightly injured. Furthermore, the injuries suffered by three drivers and two pedestrians were fatal (Tables 3-6).

On a gender basis, slightly-injured persons in the fourth quarter this year amounted to 313 (197 males and 116 females). Grievously-injured persons totalled 57, the majority being males. The fatalities comprised of four males and one female. The majority of casualties fell in the 26-40 age bracket (Table 9).

The largest number of traffic casualties (64.3 per cent) were caused by passenger cars, followed by motorcycles (23.7 per cent) and goods-carrying vehicles (10.1 per cent). Of the five fatalities, three were caused by motorcycles, one by passenger car and another by a goods-carrying vehicle (Table 10).

The highest traffic casualty rate occurred on Thursdays, accounting for 15.5 per cent of total casualties, while the highest number of accidents was recorded on Fridays. Sundays topped the highest casualty-to-accidents ratio, with 17.9 per cent compared to an overall average of 11.1 per cent (Table 13).

The daily time bracket in which most accidents occurred was between 09:00-11:59, with 721 cases, or 21.3 per cent of the total. This was followed by the 12:00-14:59 time bracket, with 701 cases. The least number of accidents occurring daily took place between 00:00 and 02:59 (70 cases) (Table 15). The highest rate of traffic accidents was registered in Birkirkara with 270 cases, followed by Ħal Qormi and Msida with 170 and 156 reported accidents respectively (Table 17).

### January-December 2016

In 2016, the total number of recorded accidents totalled 15,245, a decrease of 1.7 per cent over 2015, equating to an average of approximately 42 accidents per day. The Northern Harbour district registered the highest number of traffic accidents with 5,783 cases, or 37.9 per cent of the total (Table 1).

Compiled by:

**Unit B3: Environment,  
Energy, Transport and  
Agriculture Statistics**

Further information on data:

**Mr Ronald TANTI**  
T. +356 2599 7333  
E. [ronald.tanti@gov.mt](mailto:ronald.tanti@gov.mt)

Last year, the largest number of traffic casualties (69.4 per cent) were caused by passenger cars while 20.3 per cent were caused by motorcycles (Table 12). A total of 1,853 persons (1,099 males and 754 females) suffered injuries due to traffic accidents, of which 22 cases (16 males and 6 females) proved fatal (Table 11). These fatalities comprised of eleven drivers, three passengers, seven pedestrians and a cyclist.

The highest number of traffic accidents in 2016 occurred in the locality of Birkirkara amounting to 1,224 cases, or 8.0 per cent of the total. Ħal Qormi and St. Paul's Bay were next, with 751 and 709 reported accidents respectively (Table 17) ■

Kindly indicate source when quoting from this release.

The advance release calendar may be consulted at [www.nso.gov.mt](http://www.nso.gov.mt)

Issued by: **Dissemination Unit, National Statistics Office, Lascaris, Valletta VLT 2000, Malta.**

T. +356 2599 7219 F. +356 2599 7205 E. [nso@gov.mt](mailto:nso@gov.mt)

<https://twitter.com/NSOMALTA/> | <https://www.facebook.com/nsomalta/>

Table 1. Total road traffic accidents

Region/District	January-December		October-December			
	2015	2016	2015	2016	Change	Percentage change
<b>MALTA</b>	<b>15,504</b>	<b>15,245</b>	<b>3,727</b>	<b>3,392</b>	<b>-335</b>	<b>-9.0</b>
<b>Malta</b>	<b>14,710</b>	<b>14,464</b>	<b>3,551</b>	<b>3,232</b>	<b>-319</b>	<b>-9.0</b>
Southern Harbour	3,161	3,065	713	706	-7	-1.0
Northern Harbour	5,819	5,783	1,450	1,308	-142	-9.8
South Eastern	1,348	1,361	322	267	-55	-17.1
Western	1,868	1,782	502	424	-78	-15.5
Northern	2,514	2,473	564	527	-37	-6.6
<b>Gozo and Comino</b>	<b>794</b>	<b>781</b>	<b>176</b>	<b>160</b>	<b>-16</b>	<b>-9.1</b>

Table 2. Minor road traffic accidents

Region/District	January-December		October-December			
	2015	2016	2015	2016	Change	Percentage change
<b>MALTA</b>	<b>14,127</b>	<b>13,807</b>	<b>3,381</b>	<b>3,088</b>	<b>-293</b>	<b>-8.7</b>
<b>Malta</b>	<b>13,428</b>	<b>13,108</b>	<b>3,226</b>	<b>2,943</b>	<b>-283</b>	<b>-8.8</b>
Southern Harbour	2,864	2,768	639	648	9	1.4
Northern Harbour	5,398	5,339	1,341	1,203	-138	-10.3
South Eastern	1,204	1,182	296	229	-67	-22.6
Western	1,699	1,622	459	389	-70	-15.3
Northern	2,263	2,197	491	474	-17	-3.5
<b>Gozo and Comino</b>	<b>699</b>	<b>699</b>	<b>155</b>	<b>145</b>	<b>-10</b>	<b>-6.5</b>

Table 3. Casualties in road traffic accidents

Region/District	January-December		October-December			
	2015	2016	2015	2016	Change	Percentage change
<b>MALTA</b>	<b>1,711</b>	<b>1,853</b>	<b>429</b>	<b>375</b>	<b>-54</b>	<b>-12.6</b>
<b>Malta</b>	<b>1,599</b>	<b>1,743</b>	<b>405</b>	<b>354</b>	<b>-51</b>	<b>-12.6</b>
Southern Harbour	368	384	90	72	-18	-20.0
Northern Harbour	499	569	125	128	3	2.4
South Eastern	188	235	38	48	10	26.3
Western	213	204	54	41	-13	-24.1
Northern	331	351	98	65	-33	-33.7
<b>Gozo and Comino</b>	<b>112</b>	<b>110</b>	<b>24</b>	<b>21</b>	<b>-3</b>	<b>-12.5</b>

Table 4. Injuries sustained by drivers in road traffic accidents: October-December

Region/District	2015				2016			
	Slight	Grievous	Fatal	Total	Slight	Grievous	Fatal	Total
<b>MALTA</b>	<b>217</b>	<b>37</b>	<b>-</b>	<b>254</b>	<b>207</b>	<b>26</b>	<b>3</b>	<b>236</b>
<b>Malta</b>	<b>200</b>	<b>34</b>	<b>-</b>	<b>234</b>	<b>196</b>	<b>25</b>	<b>3</b>	<b>224</b>
Southern Harbour	50	4	-	54	43	6	-	49
Northern Harbour	61	8	-	69	65	9	-	74
South Eastern	19	5	-	24	30	2	1	33
Western	31	5	-	36	21	4	-	25
Northern	39	12	-	51	37	4	2	43
<b>Gozo and Comino</b>	<b>17</b>	<b>3</b>	<b>-</b>	<b>20</b>	<b>11</b>	<b>1</b>	<b>-</b>	<b>12</b>

Table 5. Injuries sustained by passengers in road traffic accidents: October-December

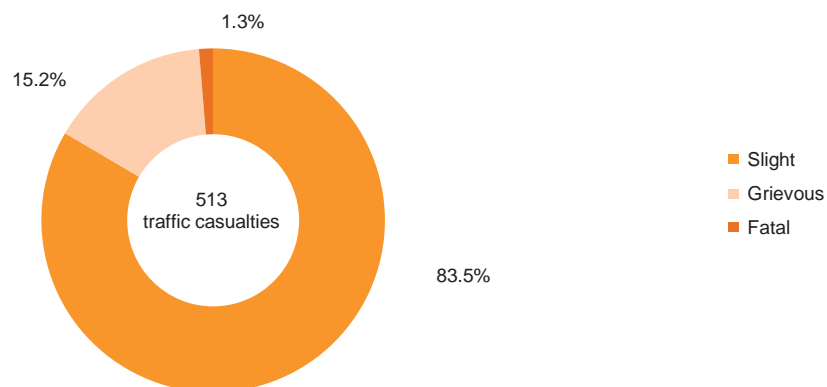
Region/District	2015				2016			
	Slight	Grievous	Fatal	Total	Slight	Grievous	Fatal	Total
<b>MALTA</b>	<b>81</b>	<b>5</b>	<b>-</b>	<b>86</b>	<b>65</b>	<b>14</b>	<b>-</b>	<b>79</b>
<b>Malta</b>	<b>79</b>	<b>5</b>	<b>-</b>	<b>84</b>	<b>60</b>	<b>13</b>	<b>-</b>	<b>73</b>
Southern Harbour	14	2	-	16	12	1	-	13
Northern Harbour	22	1	-	23	20	8	-	28
South Eastern	7	-	-	7	8	-	-	8
Western	9	-	-	9	9	1	-	10
Northern	27	2	-	29	11	3	-	14
<b>Gozo and Comino</b>	<b>2</b>	<b>-</b>	<b>-</b>	<b>2</b>	<b>5</b>	<b>1</b>	<b>-</b>	<b>6</b>

Table 6. Injuries sustained by pedestrians, cyclist, others in road traffic accidents: October-December

Region/District	2015				2016			
	Slight	Grievous	Fatal	Total	Slight	Grievous	Fatal	Total
<b>MALTA</b>	<b>59</b>	<b>27</b>	<b>3</b>	<b>89</b>	<b>41</b>	<b>17</b>	<b>2</b>	<b>60</b>
<b>Malta</b>	<b>57</b>	<b>27</b>	<b>3</b>	<b>87</b>	<b>39</b>	<b>16</b>	<b>2</b>	<b>57</b>
Southern Harbour	14	6	-	20	8	2	-	10
Northern Harbour	22	11	-	33	15	10	1	26
South Eastern	5	2	-	7	7	-	-	7
Western	7	1	1	9	3	3	-	6
Northern	9	7	2	18	6	1	1	8
<b>Gozo and Comino</b>	<b>2</b>	<b>-</b>	<b>-</b>	<b>2</b>	<b>2</b>	<b>1</b>	<b>-</b>	<b>3</b>

Note: Other refers to horsecabs, electric scooters, etc.

Chart 1. Total injuries by type in road traffic accidents: October-December 2016



**Table 7. Total injuries sustained in road traffic accidents: January-December**

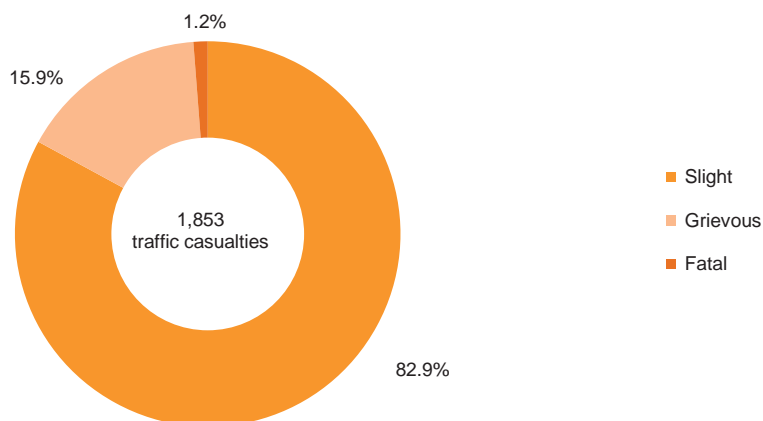
Region/District	2015				2016			
	Slight	Grievous	Fatal	Total	Slight	Grievous	Fatal	Total
<b>MALTA</b>	<b>1,394</b>	<b>306</b>	<b>11</b>	<b>1,711</b>	<b>1,537</b>	<b>294</b>	<b>22</b>	<b>1,853</b>
<b>Malta</b>	<b>1,315</b>	<b>277</b>	<b>7</b>	<b>1,599</b>	<b>1,447</b>	<b>274</b>	<b>22</b>	<b>1,743</b>
Southern Harbour	308	60	-	<b>368</b>	326	56	2	<b>384</b>
Northern Harbour	406	91	2	<b>499</b>	458	104	7	<b>569</b>
South Eastern	155	32	1	<b>188</b>	204	29	2	<b>235</b>
Western	181	31	1	<b>213</b>	175	27	2	<b>204</b>
Northern	265	63	3	<b>331</b>	284	58	9	<b>351</b>
<b>Gozo and Comino</b>	<b>79</b>	<b>29</b>	<b>4</b>	<b>112</b>	<b>90</b>	<b>20</b>	<b>-</b>	<b>110</b>

**Table 8. Road traffic casualties by month and type of injury: January-December**

Month	2015				2016			
	Slight	Grievous	Fatal	Total	Slight	Grievous	Fatal	Total
January	96	19	2	<b>117</b>	124	20	2	<b>146</b>
February	101	18	-	<b>119</b>	127	30	1	<b>158</b>
March	99	27	-	<b>126</b>	142	20	1	<b>163</b>
April	88	23	2	<b>113</b>	157	29	1	<b>187</b>
May	137	27	2	<b>166</b>	127	23	3	<b>153</b>
June	146	31	1	<b>178</b>	129	28	1	<b>158</b>
July	153	28	1	<b>182</b>	149	30	3	<b>182</b>
August	122	40	-	<b>162</b>	168	30	2	<b>200</b>
September	95	24	-	<b>119</b>	101	27	3	<b>131</b>
October	123	20	1	<b>144</b>	101	25	2	<b>128</b>
November	111	21	1	<b>133</b>	102	22	2	<b>126</b>
December	123	28	1	<b>152</b>	110	10	1	<b>121</b>
<b>Total</b>	<b>1,394</b>	<b>306</b>	<b>11</b>	<b>1,711</b>	<b>1,537</b>	<b>294</b>	<b>22</b>	<b>1,853</b>

**Note:** A pedestrian who suffered grievous injuries in an accident which happened in April, succumbed to the injuries and died in September. However, according to the definition of fatal injury this is still shown as grievous. See methodological notes.

**Chart 2. Total injuries by type in road traffic accidents: January-December 2016**



**Table 9. Road traffic casualties by type of injury, age group and sex: October-December**

Age group	2015	2016			
	Total	Slight	Grievous	Fatal	Total
<b>Males</b>					
0-10	8	14	3	-	17
11-17	3	7	1	-	8
18-25	46	28	8	2	38
26-40	84	66	13	2	81
41-59	66	51	10	-	61
60-65	17	11	4	-	15
66+	25	19	4	-	23
unknown	1	1	-	-	1
<b>Total</b>	<b>250</b>	<b>197</b>	<b>43</b>	<b>4</b>	<b>244</b>
<b>Females</b>					
0-10	7	3	1	-	4
11-17	9	6	-	-	6
18-25	38	32	3	-	35
26-40	47	33	2	-	35
41-59	47	26	3	-	29
60-65	12	2	2	-	4
66+	17	14	3	1	18
unknown	2	-	-	-	-
<b>Total</b>	<b>179</b>	<b>116</b>	<b>14</b>	<b>1</b>	<b>131</b>
<b>Total</b>					
0-10	15	17	4	-	21
11-17	12	13	1	-	14
18-25	84	60	11	2	73
26-40	131	99	15	2	116
41-59	113	77	13	-	90
60-65	29	13	6	-	19
66+	42	33	7	1	41
unknown	3	1	-	-	1
<b>Total</b>	<b>429</b>	<b>313</b>	<b>57</b>	<b>5</b>	<b>375</b>

**Table 10. Road traffic casualties by type of injury, age group and vehicle type: October-December**

Vehicle type	2015	2016			
	Total	Slight	Grievous	Fatal	Total
Motorcycle	84	63	23	3	89
Passenger car	297	214	26	1	241
Coach and bus	13	1	1	-	2
Goods-carrying vehicle	26	32	5	1	38
Unknown vehicle type	9	3	2	-	5
<b>Total</b>	<b>429</b>	<b>313</b>	<b>57</b>	<b>5</b>	<b>375</b>

Table 11. Road traffic casualties by type of injury, age group and sex: January-December

Age group	2015	2016			
	Total	Slight	Grievous	Fatal	Total
<b>Males</b>					
0-10	43	39	15	-	54
11-17	31	26	6	-	32
18-25	198	154	42	3	199
26-40	311	296	59	7	362
41-59	248	220	56	4	280
60-65	58	49	9	-	58
66+	102	83	26	2	111
unknown	7	2	1	-	3
<b>Total</b>	<b>998</b>	<b>869</b>	<b>214</b>	<b>16</b>	<b>1,099</b>
<b>Females</b>					
0-10	42	26	2	-	28
11-17	31	29	3	1	33
18-25	141	151	14	-	165
26-40	225	190	21	2	213
41-59	162	178	23	1	202
60-65	44	30	3	-	33
66+	65	64	14	2	80
unknown	3	-	-	-	-
<b>Total</b>	<b>713</b>	<b>668</b>	<b>80</b>	<b>6</b>	<b>754</b>
<b>Total</b>					
0-10	85	65	17	-	82
11-17	62	55	9	1	65
18-25	339	305	56	3	364
26-40	536	486	80	9	575
41-59	410	398	79	5	482
60-65	102	79	12	-	91
66+	167	147	40	4	191
unknown	10	2	1	-	3
<b>Total</b>	<b>1,711</b>	<b>1,537</b>	<b>294</b>	<b>22</b>	<b>1,853</b>

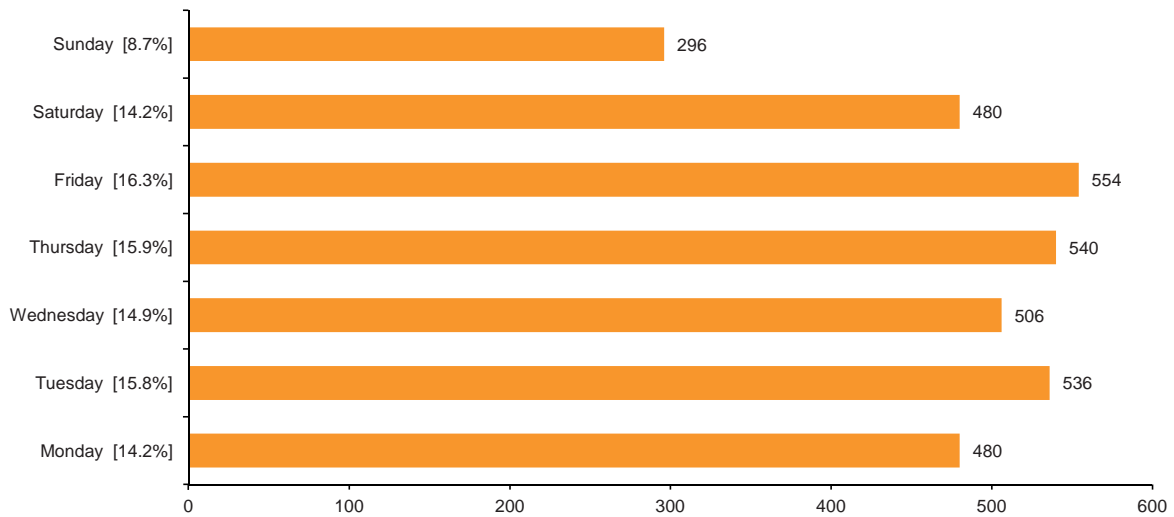
Table 12. Road traffic casualties by type of injury, age group and vehicle type: January-December

Vehicle type	2015	2016			
	Total	Slight	Grievous	Fatal	Total
Motorcycle	318	270	98	9	377
Passenger car	1,223	1,123	152	11	1,286
Coach and bus	34	31	12	-	43
Goods-carrying vehicle	116	99	25	2	126
Unknown vehicle type	20	14	7	-	21
<b>Total</b>	<b>1,711</b>	<b>1,537</b>	<b>294</b>	<b>22</b>	<b>1,853</b>

**Table 13. Road traffic casualties and accidents by day of the week: October-December 2016**

	Monday	Tuesday	Wednesday	Thursday	Friday	Saturday	Sunday	Total
<b>Traffic casualties</b>	41	64	47	58	56	56	53	<b>375</b>
<b>Traffic accidents</b>	480	536	506	540	554	480	296	<b>3,392</b>
<b>Casualties-to-accidents ratio (%)</b>	8.5	11.9	9.3	10.7	10.1	11.7	17.9	<b>11.1</b>

**Chart 3. Total road traffic accidents by day of the week: October-December 2016**



**Table 14. Road traffic casualties and accidents by day of the week: January-December 2016**

	Monday	Tuesday	Wednesday	Thursday	Friday	Saturday	Sunday	Total
<b>Traffic casualties</b>	246	261	233	282	252	298	281	<b>1,853</b>
<b>Traffic accidents</b>	2,311	2,300	2,325	2,402	2,382	2,020	1,505	<b>15,245</b>
<b>Casualties-to-accidents ratio (%)</b>	10.6	11.3	10.0	11.7	10.6	14.8	18.7	<b>12.2</b>

**Chart 4. Total road traffic accidents by day of the week: January-December 2016**

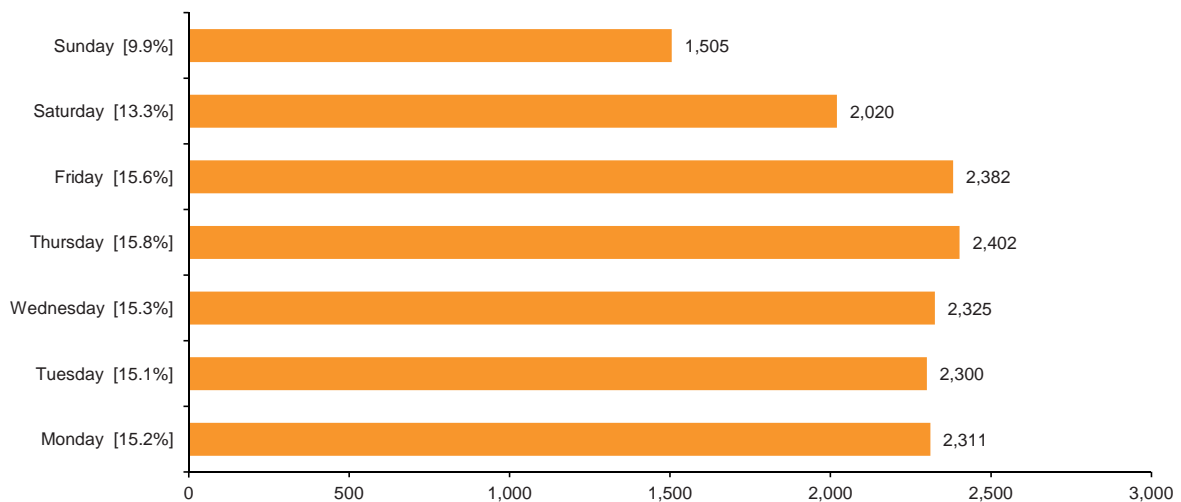


Table 15. Road traffic accidents by day and time of day: October-December 2016

Time bracket	Monday	Tuesday	Wednesday	Thursday	Friday	Saturday	Sunday	Total
00:00 - 02:59	9	5	2	8	7	23	16	70
03:00 - 05:59	8	6	7	12	12	27	29	101
06:00 - 08:59	83	96	104	89	94	50	19	535
09:00 - 11:59	101	113	106	117	102	120	62	721
12:00 - 14:59	106	103	108	103	125	103	53	701
15:00 - 17:59	110	121	98	119	121	68	40	677
18:00 - 20:59	48	78	61	76	62	59	54	438
21:00 - 23:59	15	14	20	16	31	30	23	149
<b>Total</b>	<b>480</b>	<b>536</b>	<b>506</b>	<b>540</b>	<b>554</b>	<b>480</b>	<b>296</b>	<b>3,392</b>

Chart 5. Road traffic accidents by day and time bracket: October-December 2016

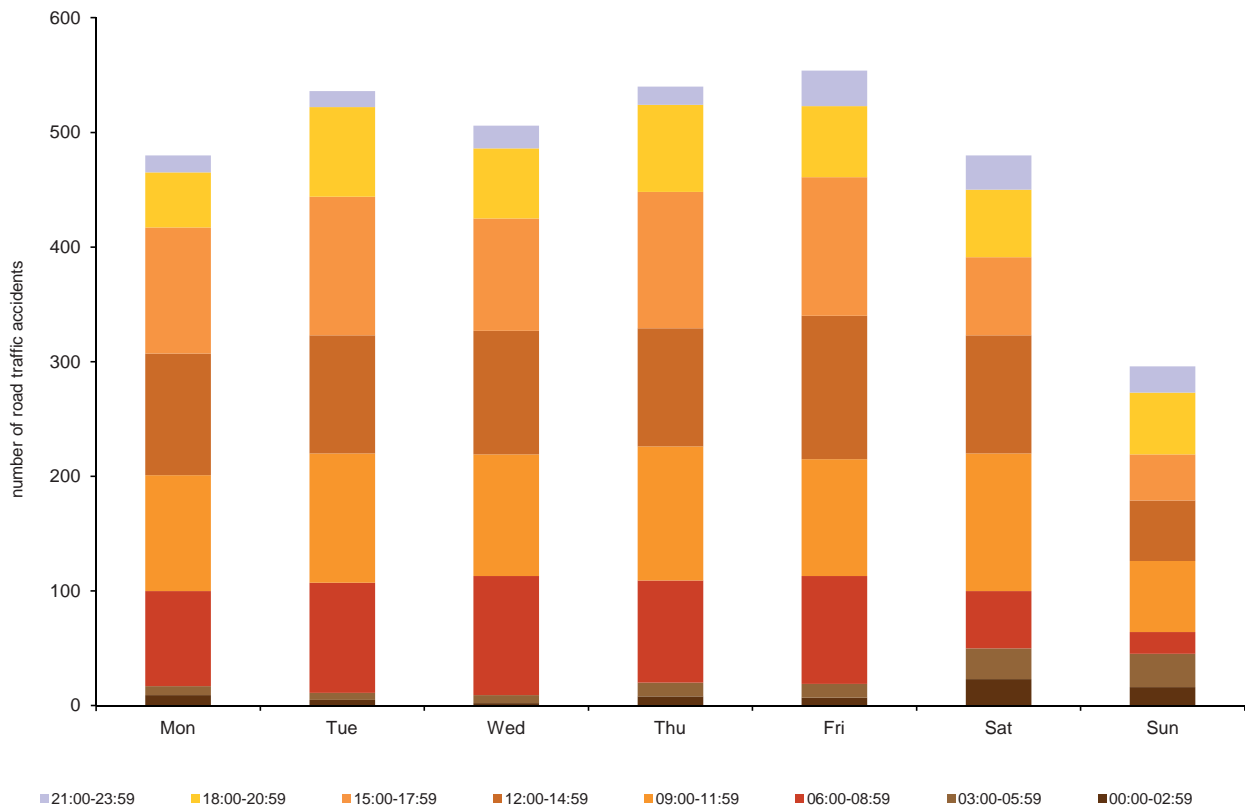




Table 16. Road traffic accidents by day and time of day: January-December 2016

Time bracket	Monday	Tuesday	Wednesday	Thursday	Friday	Saturday	Sunday	Total
00:00 - 02:59	41	28	24	44	41	91	103	372
03:00 - 05:59	31	32	29	39	39	89	104	363
06:00 - 08:59	399	406	383	394	337	206	105	2,230
09:00 - 11:59	492	475	500	551	513	458	291	3,280
12:00 - 14:59	490	459	520	494	523	456	245	3,187
15:00 - 17:59	522	500	490	476	519	332	259	3,098
18:00 - 20:59	265	315	281	302	302	260	275	2,000
21:00 - 23:59	71	85	98	102	108	128	123	715
<b>Total</b>	<b>2,311</b>	<b>2,300</b>	<b>2,325</b>	<b>2,402</b>	<b>2,382</b>	<b>2,020</b>	<b>1,505</b>	<b>15,245</b>

Chart 6. Road traffic accidents by day and time bracket: January-December 2016

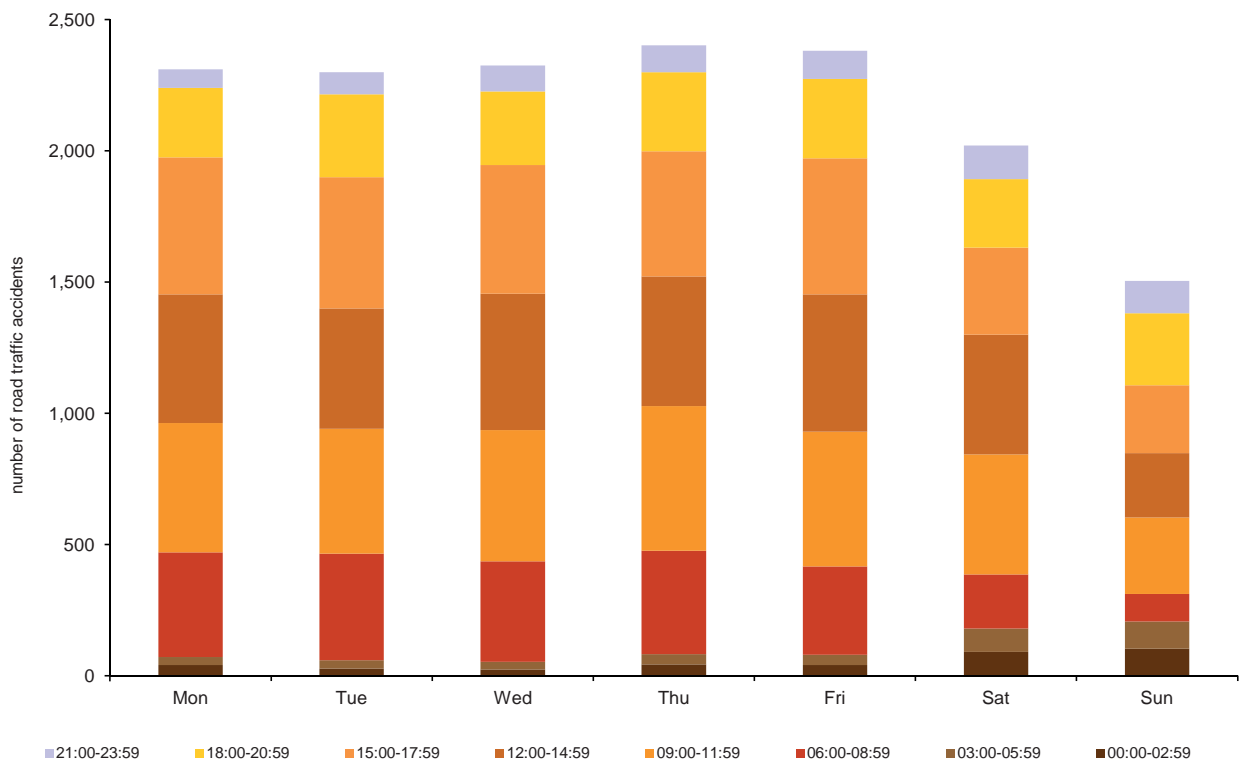


Table 17. Road traffic accidents by locality ...

District/Locality	January-December		October-December		Change
	2015	2016	2015	2016	
<b>Southern Harbour</b>	<b>3,161</b>	<b>3,065</b>	<b>713</b>	<b>706</b>	<b>-7</b>
Cospicua	94	115	30	32	2
Fgura	272	263	59	59	-
Floriana	232	219	44	55	11
Hal Luqa	345	328	81	90	9
Hal Tarxien	274	256	63	53	-10
Haż-Żabbar	333	326	74	67	-7
Kalkara	35	32	4	3	-1
Marsa	749	676	165	155	-10
Paola	475	491	120	115	-5
Santa Luċija	43	46	9	11	2
Senglea	34	19	4	2	-2
Valletta	214	224	49	54	5
Vittoriosa	45	48	8	6	-2
Xgħajra	16	22	3	4	1
<b>Northern Harbour</b>	<b>5,819</b>	<b>5,783</b>	<b>1,450</b>	<b>1,308</b>	<b>-142</b>
Birkirkara	1,187	1,224	318	270	-48
Gżira	450	395	111	92	-19
Hal Qormi	776	751	191	170	-21
Hamrun	353	384	81	89	8
Msida	598	626	153	156	3
Pembroke	70	110	23	24	1
San Ġwann	549	518	125	116	-9
Santa Venera	289	272	72	59	-13
St Julian's	479	465	112	95	-17
Swieqi	201	228	48	62	14
Ta' Xbiex	96	95	22	19	-3
Tal-Pietà	215	188	56	51	-5
Tas-Sliema	556	527	138	105	-33
<b>South Eastern</b>	<b>1,348</b>	<b>1,361</b>	<b>322</b>	<b>267</b>	<b>-55</b>
Birżebbuġa	198	222	49	38	-11
Gudja	175	133	47	25	-22
Hal Ghaxaq	87	86	21	16	-5
Hal Kirkop	44	63	14	19	5
Hal Safi	44	48	11	13	2
Marsaskala	219	197	46	44	-2
Marsaxlokk	72	72	19	14	-5
Mqabba	56	51	12	7	-5
Qrendi	30	31	4	7	3
Żejtun	268	312	76	53	-23
Żurrieq	155	146	23	31	8
<b>Western</b>	<b>1,868</b>	<b>1,782</b>	<b>502</b>	<b>424</b>	<b>-78</b>
Had-Dingli	46	49	11	15	4
Hal Balzan	183	138	53	35	-18
Hal Lija	231	203	58	52	-6
H'Attard	478	456	131	102	-29
Haż-Żebbuġ	303	313	77	69	-8
Iklin	95	99	27	25	-2
Mdina	25	38	8	13	5
Mtarfa	73	84	6	5	-1
Rabat	317	288	101	81	-20
Siġġiewi	117	114	30	27	-3
<b>Northern</b>	<b>2,514</b>	<b>2,473</b>	<b>564</b>	<b>527</b>	<b>-37</b>
Hal Gharghur	95	100	15	19	4
Mellieħa	372	396	71	79	8
Mġarr	156	116	34	23	-11
Mosta	599	625	174	128	-46
Naxxar	601	527	129	144	15
St Paul's Bay	691	709	141	134	-7

... Table 17. Road traffic accidents by locality

District/Locality	January-December		October-December		
	2015	2016	2015	2016	Change
<b>Gozo and Comino</b>	<b>794</b>	<b>781</b>	<b>176</b>	<b>160</b>	<b>-16</b>
Fontana	18	15	6	2	-4
Għajnsielem	80	98	15	26	11
Għarb	27	21	5	7	2
Għasri	11	8	1	-	-1
Munxar	26	20	7	2	-5
Nadur	76	64	14	8	-6
Qala	21	21	2	5	3
San Lawrenz	11	5	-	1	1
Ta' Kerċem	11	15	5	1	-4
Ta' Sannat	18	20	5	8	3
Victoria	274	245	61	54	-7
Xagħra	62	83	15	16	1
Xewkija	103	114	27	24	-3
Żebbuġ	56	52	13	6	-7

Chart 7. Top ten localities in which most road traffic accidents occurred: October-December 2016

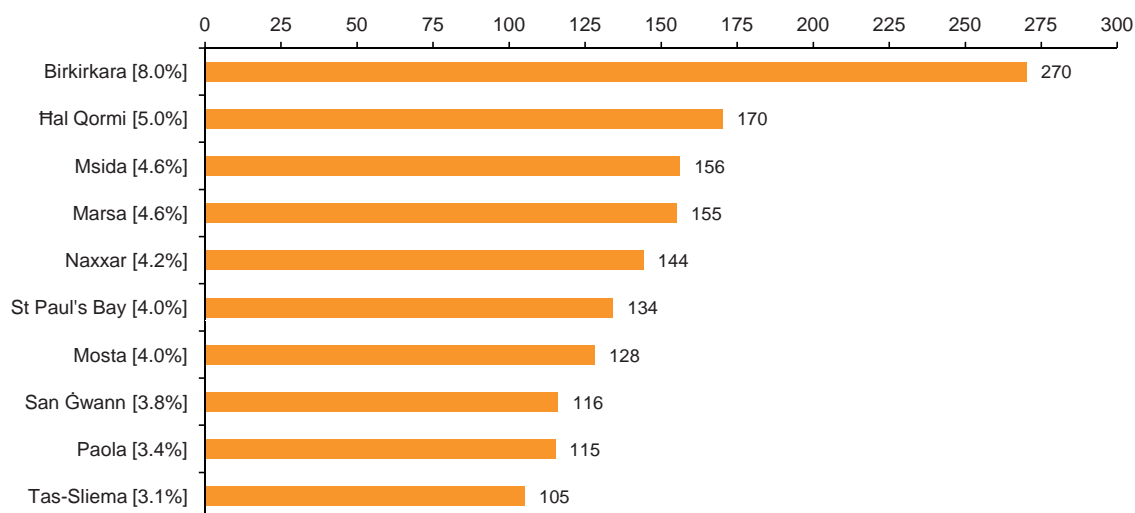
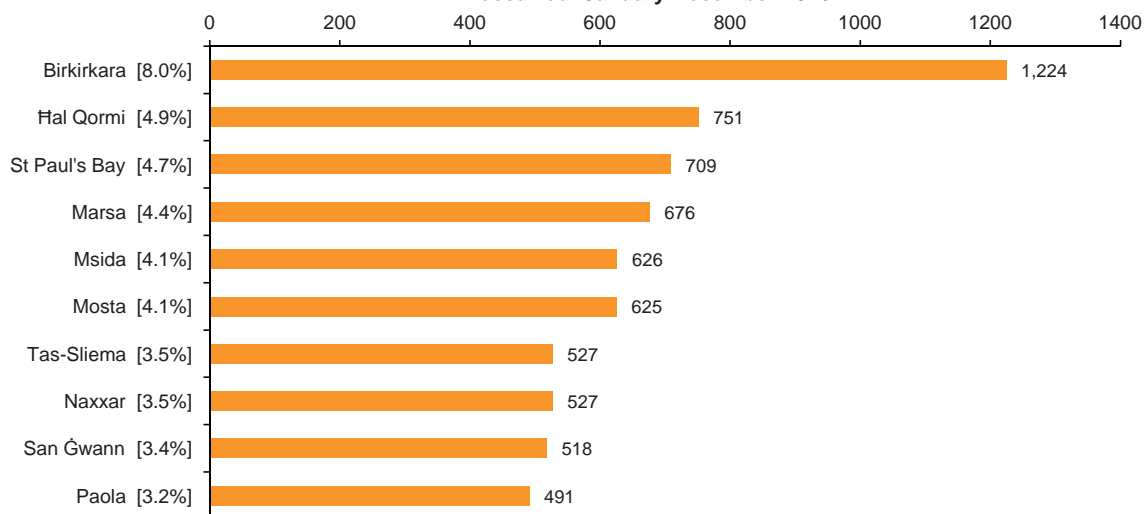


Chart 8. Top ten localities in which most road traffic accident occurred: January-December 2016



## Methodological Notes

1. Road traffic accidents' data are compiled from administrative information provided by the Police Department, the Guard and Warden Services Limited and the Malta Insurance Association.
2. Total road traffic accidents is equal to the accidents involving casualties (Police reports) plus the minor accidents without casualties (Police and Warden reports).
3. Minor road traffic accidents which are not reported or those reported to Insurance Agencies by means of the Traffic Accident Form (i.e. no Police or Wardens are called on the accident scene and those involved in the accident decide to settle by filling in the form) are not accounted for.
4. Minor road traffic accidents refer to accidents involving at least one vehicle and in which no persons are injured and are assessed by the police or by the traffic wardens.
5. Road traffic accidents involving injury is equal to the total road traffic accidents (Table 1) minus minor road traffic accidents (Table 2).
6. The type of casualty (slight or grievous) is determined by the Health Department. The definitions of deaths caused by road traffic accidents refer to the European Conference for Ministers of Transport (ECMT) and United Nations Economic Commission for Europe (UNECE).
7. UNECE definition of road fatal injury: "Any person who was killed outright or who died within 30 days as a result of the accident".
8. Data may be subject to revision.
9. More information relating to this news release may be accessed at:  
Statistical Concepts: <http://nso.gov.mt/metadata/concepts.aspx>