

During the first quarter of 2017 there were six road traffic fatalities.

## Road Traffic Accidents: Q1/2017

The number of reported road traffic accidents in the first quarter reached 3,508, down by 5.6 per cent over the comparative period in 2016. This amount equals to an average rate of approximately 39 accidents per day (Table 1).

Traffic casualties decreased by 13.7 per cent to 403 over 2016, of which 244 (60.5 per cent) involved drivers. The amount of slight/insignificant injuries sustained by drivers was 210 and 30 cases were reported as grievous. Another 30 persons (6 passengers and 24 pedestrians/cyclists/others) suffered grievous injuries. There were also 84 passengers and 43 pedestrians/cyclist/others who were slightly/insignificantly injured. Furthermore, the injuries suffered by four drivers, one passenger and one pedestrian were fatal (Tables 3-6).

On a gender basis, slightly/insignificantly-injured persons in the first quarter this year amounted to 337 (189 males and 148 females). Grievously-injured persons totalled 60, the majority being males. The fatalities comprised of five males and one female. The majority of casualties fell in the 26-40 age bracket (Table 7).

The largest number of road traffic casualties (68.2 per cent) involved passenger cars, followed by motorcycles (19.4 per cent) and goods-carrying vehicles (6.0 per cent). Of the six fatalities, three were caused by passenger cars, one by a motorcycle, one by a quadricycle and another one by a goods-carrying vehicle (Tables 8-9).

The highest road traffic casualty rate occurred on Mondays, accounting for 15.6 per cent of total casualties, while the highest number of accidents was recorded on Fridays. Sundays topped the highest casualty-to-accidents ratio, with 15.7 per cent compared to an overall average of 11.5 per cent (Table 11).

The daily time bracket in which most accidents occurred was between 12:00-14:59, with 743 cases, or 21.2 per cent of the total. This was followed by the 15:00-17:59 time bracket, with 729 cases. The least number of accidents occurring daily took place between 00:00 and 02:59 (64 cases) (Table 12).

The highest rate of traffic accidents was registered in Birkirkara with 294 cases, followed by Mosta and Ħal Qormi with 148 and 145 reported accidents respectively (Table 13) ■

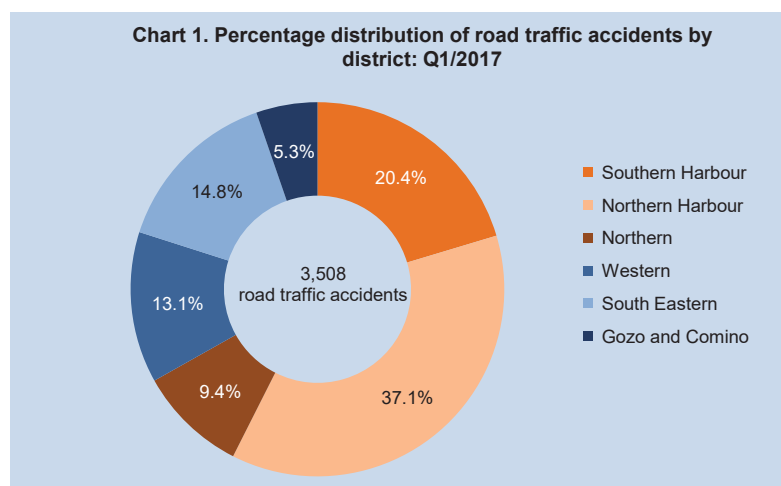


Table 1. Total road traffic accidents

Region/District	January-March			
	2016	2017	Change	Percentage change
<b>MALTA</b>	<b>3,717</b>	<b>3,508</b>	<b>-209</b>	<b>-5.6</b>
<b>Malta</b>	<b>3,539</b>	<b>3,322</b>	<b>-217</b>	<b>-6.1</b>
Southern Harbour	755	715	-40	-5.3
Northern Harbour	1,460	1,300	-160	-11.0
South Eastern	330	331	1	0.3
Western	427	458	31	7.3
Northern	567	518	-49	-8.6
<b>Gozo and Comino</b>	<b>178</b>	<b>186</b>	<b>8</b>	<b>4.5</b>

Table 2. Minor road traffic accidents

Region/District	January-March			
	2016	2017	Change	Percentage change
<b>MALTA</b>	<b>3,373</b>	<b>3,191</b>	<b>-182</b>	<b>-5.4</b>
<b>Malta</b>	<b>3,214</b>	<b>3,027</b>	<b>-187</b>	<b>-5.8</b>
Southern Harbour	673	646	-27	-4.0
Northern Harbour	1,351	1,210	-141	-10.4
South Eastern	295	301	6	2.0
Western	387	408	21	5.4
Northern	508	462	-46	-9.1
<b>Gozo and Comino</b>	<b>159</b>	<b>164</b>	<b>5</b>	<b>3.1</b>

Table 3. Casualties in road traffic accidents

Region/District	January-March			
	2016	2017	Change	Percentage change
<b>MALTA</b>	<b>467</b>	<b>403</b>	<b>-64</b>	<b>-13.7</b>
<b>Malta</b>	<b>440</b>	<b>370</b>	<b>-70</b>	<b>-15.9</b>
Southern Harbour	108	92	-16	-14.8
Northern Harbour	156	106	-50	-32.1
South Eastern	49	39	-10	-20.4
Western	57	73	16	28.1
Northern	70	60	-10	-14.3
<b>Gozo and Comino</b>	<b>27</b>	<b>33</b>	<b>6</b>	<b>22.2</b>

Table 4. Injuries sustained by drivers in road traffic accidents: January-March

Region/District	2016					2017				
	Fatal	Grievous	Slight	Insignificant	Total	Fatal	Grievous	Slight	Insignificant	Total
<b>MALTA</b>	<b>3</b>	<b>35</b>	<b>216</b>	<b>8</b>	<b>262</b>	<b>4</b>	<b>30</b>	<b>196</b>	<b>14</b>	<b>244</b>
<b>Malta</b>	<b>3</b>	<b>30</b>	<b>206</b>	<b>7</b>	<b>246</b>	<b>3</b>	<b>25</b>	<b>183</b>	<b>14</b>	<b>225</b>
Southern Harbour	-	7	47	2	56	1	3	54	-	58
Northern Harbour	-	10	73	1	84	-	10	44	3	57
South Eastern	-	4	22	1	27	-	-	21	2	23
Western	1	2	32	1	36	-	3	38	9	50
Northern	2	7	32	2	43	2	9	26	-	37
<b>Gozo and Comino</b>	-	<b>5</b>	<b>10</b>	<b>1</b>	<b>16</b>	<b>1</b>	<b>5</b>	<b>13</b>	-	<b>19</b>

Table 5. Injuries sustained by passengers in road traffic accidents: January-March

Region/District	2016					2017				
	Fatal	Grievous	Slight	Insignificant	Total	Fatal	Grievous	Slight	Insignificant	Total
<b>MALTA</b>	<b>1</b>	<b>15</b>	<b>115</b>	<b>9</b>	<b>140</b>	<b>1</b>	<b>6</b>	<b>77</b>	<b>7</b>	<b>91</b>
<b>Malta</b>	<b>1</b>	<b>13</b>	<b>110</b>	<b>7</b>	<b>131</b>	-	<b>6</b>	<b>68</b>	<b>6</b>	<b>80</b>
Southern Harbour	-	2	33	1	36	-	-	22	1	23
Northern Harbour	1	9	36	2	48	-	3	15	2	20
South Eastern	-	2	14	2	18	-	-	8	-	8
Western	-	-	16	1	17	-	2	16	2	20
Northern	-	-	11	1	12	-	1	7	1	9
<b>Gozo and Comino</b>	-	<b>2</b>	<b>5</b>	<b>2</b>	<b>9</b>	<b>1</b>	-	<b>9</b>	<b>1</b>	<b>11</b>

Table 6. Injuries sustained by pedestrians, cyclist, others in road traffic accidents: January-March

Region/District	2016					2017				
	Fatal	Grievous	Slight	Insignificant	Total	Fatal	Grievous	Slight	Insignificant	Total
<b>MALTA</b>	-	<b>20</b>	<b>42</b>	<b>3</b>	<b>65</b>	<b>1</b>	<b>24</b>	<b>42</b>	<b>1</b>	<b>68</b>
<b>Malta</b>	-	<b>20</b>	<b>40</b>	<b>3</b>	<b>63</b>	<b>1</b>	<b>23</b>	<b>40</b>	<b>1</b>	<b>65</b>
Southern Harbour	-	8	8	-	16	1	5	5	-	11
Northern Harbour	-	8	14	2	24	-	11	18	-	29
South Eastern	-	1	2	1	4	-	3	4	1	8
Western	-	-	4	-	4	-	1	2	-	3
Northern	-	3	12	-	15	-	3	11	-	14
<b>Gozo and Comino</b>	-	-	<b>2</b>	-	<b>2</b>	-	<b>1</b>	<b>2</b>	-	<b>3</b>

Note: Other refers to horsecabs, electric scooters, etc.

Chart 2. Total injuries by type in road traffic accidents: January-March 2017

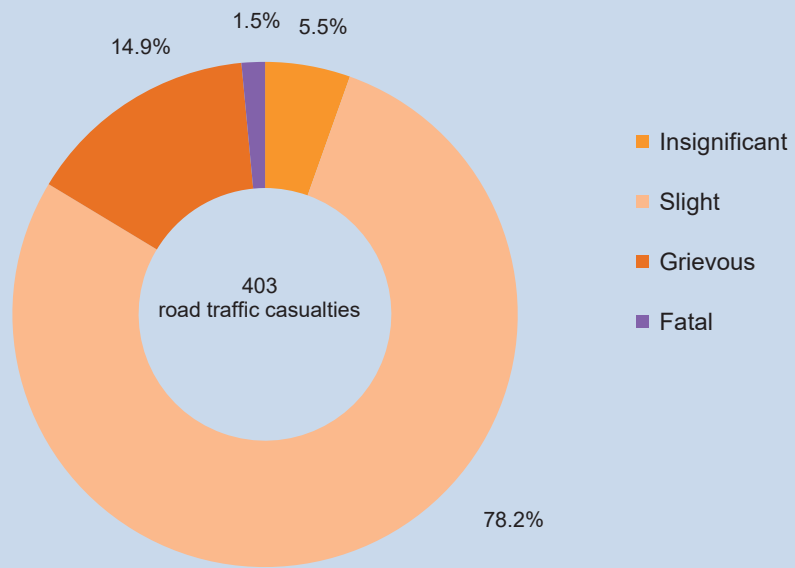


Chart 3. Total injuries by injured person type: January-March 2017

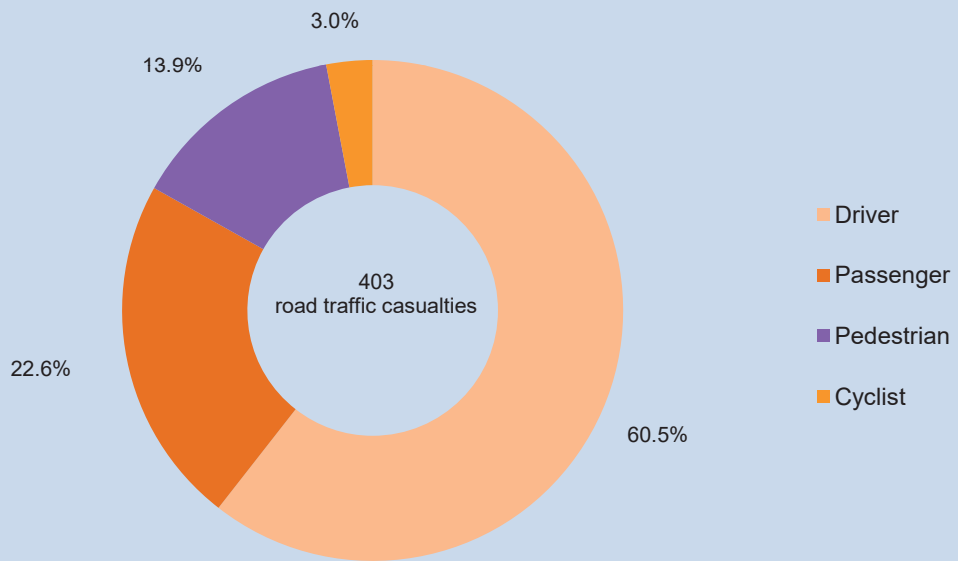


Table 7. Road traffic casualties by type of injury, age group and sex: January-March

Age group	2016	2017				
	Total	Fatal	Grievous	Slight	Insignificant	Total
<b>Males</b>						
0-10	11	-	2	9	-	11
11-17	6	-	-	2	-	2
18-25	56	2	8	36	-	46
26-40	73	1	15	59	5	80
41-59	82	-	12	54	4	70
60-65	17	-	2	7	-	9
66+	28	2	5	12	1	20
<b>Total</b>	<b>273</b>	<b>5</b>	<b>44</b>	<b>179</b>	<b>10</b>	<b>238</b>
<b>Females</b>						
0-10	13	-	-	9	-	9
11-17	7	-	-	3	1	4
18-25	37	-	3	25	4	32
26-40	55	-	3	46	2	51
41-59	50	-	1	34	2	37
60-65	10	-	3	7	2	12
66+	22	1	6	12	1	20
<b>Total</b>	<b>194</b>	<b>1</b>	<b>16</b>	<b>136</b>	<b>12</b>	<b>165</b>
<b>Total</b>						
0-10	24	-	2	18	-	20
11-17	13	-	-	5	1	6
18-25	93	2	11	61	4	78
26-40	128	1	18	105	7	131
41-59	132	-	13	88	6	107
60-65	27	-	5	14	2	21
66+	50	3	11	24	2	40
<b>Total</b>	<b>467</b>	<b>6</b>	<b>60</b>	<b>315</b>	<b>22</b>	<b>403</b>

Table 8. Road traffic casualties by type of vehicle and injured person: January-March

Vehicle type	2016	2017				
	Total	Driver	Passenger	Pedestrian	Cyclist	Total
Agricultural	-	-	-	-	-	-
Coach and private bus	-	1	-	-	-	1
Minibus	9	1	6	-	-	7
Route Bus	11	1	2	1	-	4
Motorcycle	70	72	5	1	-	78
Quadricycle	2	3	1	3	-	7
Passenger Car	337	152	75	38	10	275
Goods-carrying vehicle	33	13	2	7	2	24
Special Purpose Vehicle	-	1	-	1	-	2
Road Tractor	-	-	-	-	-	-
Unknown vehicle type	5	-	-	5	-	5
<b>Total</b>	<b>467</b>	<b>244</b>	<b>91</b>	<b>56</b>	<b>12</b>	<b>403</b>

**Table 9. Road traffic casualties by type of vehicle and type of injury: January-March**

Vehicle type	2016	2017				
	Total	Fatal	Grievous	Slight	Insignificant	Total
Agricultural	-	-	-	-	-	-
Coach and private bus	-	-	-	1	-	1
Minibus	9	-	-	7	-	7
Route Bus	11	-	1	3	-	4
Motorcycle	70	1	17	57	3	78
Quadricycle	2	1	-	6	-	7
Passenger Car	337	3	35	219	18	275
Goods-carrying vehicle	33	1	5	17	1	24
Special Purpose Vehicle	-	-	-	2	-	2
Road Tractor	-	-	-	-	-	-
Unknown vehicle type	5	-	2	3	-	5
<b>Total</b>	<b>467</b>	<b>6</b>	<b>60</b>	<b>315</b>	<b>22</b>	<b>403</b>

**Table 10. Road traffic casualties by type of accident and injured person: January-March**

Accident type	2016	2017				
	Total	Driver	Passenger	Pedestrian	Cyclist	Total
Vehicle with vehicle	350	209	84	-	-	293
Vehicle with pedestrian	57	3	-	53	-	56
Vehicle with bicycle	13	-	1	-	12	13
Vehicle with property	43	32	6	-	-	38
Vehicle hit and run	3	-	-	3	-	3
Vehicle with animal	1	-	-	-	-	-
<b>Total</b>	<b>467</b>	<b>244</b>	<b>91</b>	<b>56</b>	<b>12</b>	<b>403</b>

**Table 11. Road traffic casualties and accidents by day of the week: January-March 2017**

	Monday	Tuesday	Wednesday	Thursday	Friday	Saturday	Sunday	Total
<b>Traffic casualties</b>	63	48	57	61	62	53	59	<b>403</b>
<b>Traffic accidents</b>	528	545	556	504	562	437	376	<b>3,508</b>
<b>Casualties-to-accidents ratio (%)</b>	11.9	8.8	10.3	12.1	11.0	12.1	15.7	<b>11.5</b>

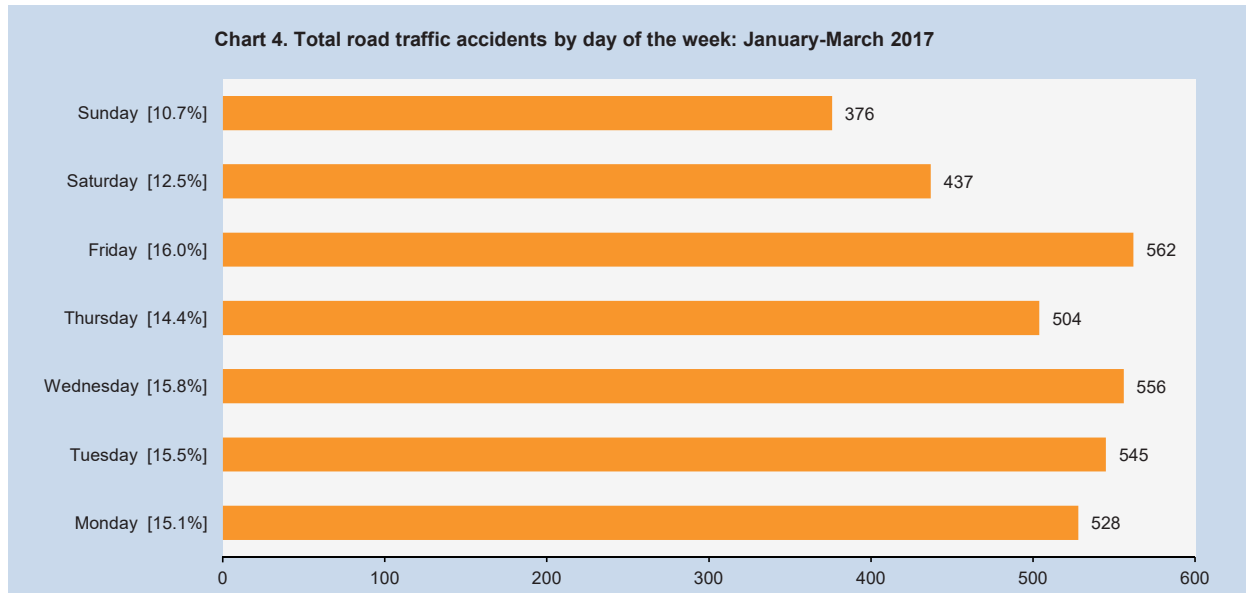


Table 12. Road traffic accidents by day and time of day: January-March 2017

Time bracket	Monday	Tuesday	Wednesday	Thursday	Friday	Saturday	Sunday	Total
00:00 - 02:59	8	4	8	1	10	13	20	64
03:00 - 05:59	8	3	9	3	10	17	25	75
06:00 - 08:59	102	112	124	111	91	56	40	636
09:00 - 11:59	115	117	108	106	94	99	74	713
12:00 - 14:59	123	117	111	96	117	109	70	743
15:00 - 17:59	110	107	111	110	140	71	80	729
18:00 - 20:59	46	70	64	56	73	42	39	390
21:00 - 23:59	16	15	21	21	27	30	28	158
<b>Total</b>	<b>528</b>	<b>545</b>	<b>556</b>	<b>504</b>	<b>562</b>	<b>437</b>	<b>376</b>	<b>3,508</b>

Chart 5. Road traffic accidents by day and time bracket: January-March 2017

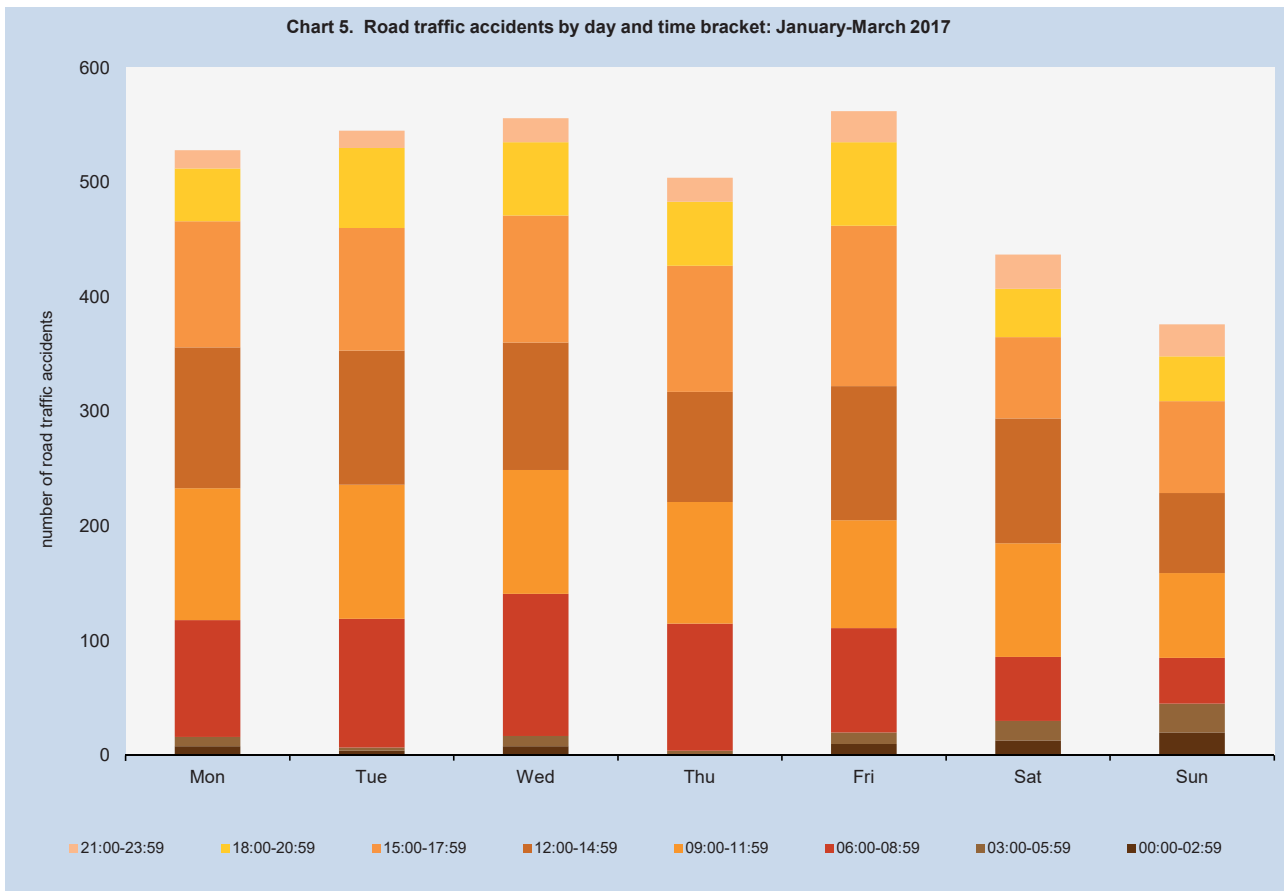




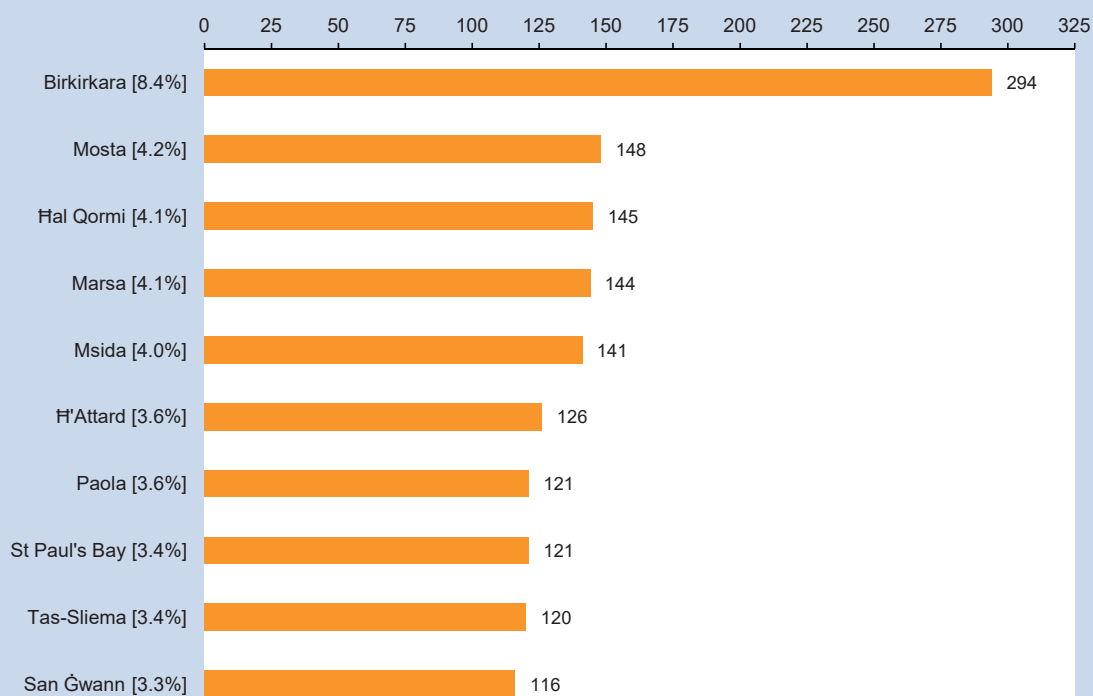
Table 13. Road traffic accidents by locality ...

District/Locality	January-March		
	2016	2017	Change
<b>Southern Harbour</b>	<b>755</b>	<b>715</b>	<b>-40</b>
Cospicua	26	32	6
Fgura	68	61	-7
Floriana	53	51	-2
Ħal Luqa	94	74	-20
Ħal Tarxien	72	53	-19
Ħaż-Żabbar	77	85	8
Kalkara	8	12	4
Marsa	158	144	-14
Paola	117	121	4
Santa Luċija	10	7	-3
Senglea	6	5	-1
Valletta	52	46	-6
Vittoriosa	11	20	9
Xgħajra	3	4	1
<b>Northern Harbour</b>	<b>1,460</b>	<b>1,300</b>	<b>-160</b>
Birkirkara	306	294	-12
Gżira	98	99	1
Ħal Qormi	190	145	-45
Ħamrun	116	76	-40
Msida	145	141	-4
Pembroke	28	19	-9
San Ġwann	134	116	-18
Santa Venera	71	66	-5
St Julian's	123	95	-28
Swieqi	55	56	1
Ta' Xbiex	27	33	6
Tal-Pietà	43	40	-3
Tas-Sliema	124	120	-4
<b>South Eastern</b>	<b>330</b>	<b>331</b>	<b>1</b>
Birżebbuġa	50	52	2
Gudja	39	42	3
Ħal Għaxaq	23	18	-5
Ħal Kirkop	19	14	-5
Ħal Safi	11	13	2
Marsaskala	37	46	9
Marsaxlokk	13	17	4
Mqabba	10	11	1
Qrendi	6	15	9
Żejtun	85	74	-11
Żurrieq	37	29	-8
<b>Western</b>	<b>427</b>	<b>458</b>	<b>31</b>
Ħad-Dingli	14	15	1
Ħal Balzan	34	39	5
Ħal Lija	53	48	-5
Ħ'Attard	107	126	19
Ħaż-Żebbuġ	64	74	10
Iklin	19	19	0
Mdina	15	9	-6
Mtarfa	65	5	-60
Rabat	48	91	43
Siġġiewi	8	32	24
<b>Northern</b>	<b>567</b>	<b>518</b>	<b>-49</b>
Ħal Għarghur	30	32	2
Mellieħa	75	69	-6
Mgarr	34	36	2
Mosta	147	148	1
Naxxar	125	112	-13
St Paul's Bay	156	121	-35

... Table 13. Road traffic accidents by locality

District/Locality	January-March		
	2016	2017	Change
<b>Gozo and Comino</b>	<b>178</b>	<b>186</b>	<b>8</b>
Fontana	3	2	-1
Għajnsielem	16	20	4
Għarb	5	13	8
Għasri	3	4	1
Munxar	4	6	2
Nadur	19	8	-11
Qala	3	3	0
San Lawrenz	0	1	1
Ta' Kerċem	8	1	-7
Ta' Sannat	3	4	1
Victoria	51	57	6
Xagħra	28	16	-12
Xewkija	28	37	9
Żebbuġ	7	14	7

Chart 6. Top ten localities in which most road traffic accidents occurred: January-March 2017



## Methodological Notes

1. Road traffic accidents' data are compiled from administrative information provided by the Police Department and the Malta Insurance Association (Guard and Warden Services Limited).
2. Total road traffic accidents is equal to the accidents involving casualties (Police reports) plus the minor accidents without casualties (Police and Warden reports).
3. Minor road traffic accidents which are not reported or those reported to Insurance Agencies by means of the Traffic Accident Form (i.e. no Police or Wardens are called on the accident scene and those involved in the accident decide to settle by filling in the form) are not accounted for.
4. Minor road traffic accidents refer to accidents involving at least one vehicle and in which no persons are injured and are assessed by the police or by the traffic wardens.
5. Road traffic accidents involving injury is equal to the total road traffic accidents (Table 1) minus minor road traffic accidents (Table 2).
6. Insignificant injury is determined by the Police as a very minimal injury (bruise, scratch, etc.) or shock due to accident, which in most cases needs a very basic treatment or no treatment is necessary.
7. The type of injury (slight or grievous) is determined by the Health Department. The definitions of deaths caused by road traffic accidents refer to the European Conference for Ministers of Transport (ECMT) and United Nations Economic Commission for Europe (UNECE).
8. UNECE definition of road fatal injury: "Any person who was killed outright or who died within 30 days as a result of the accident".
9. Data may be subject to revision.
10. More information relating to this news release may be accessed at:  
Statistical Concepts: <http://nso.gov.mt/metadata/concepts.aspx>
11. Kindly indicate source when quoting from this release.
12. The advanced news release calendar may be accessed at [www.nso.gov.mt](http://www.nso.gov.mt)