

In the third quarter of 2017, sea transport between Malta and Gozo registered increases when compared to the corresponding quarter of 2016.

Sea transport between Malta and Gozo: Q3/2017

A total of 1,674,618 passengers travelled between Malta and Gozo during the third quarter this year, up by 1.9 per cent when compared to the corresponding quarter in 2016. The highest number of passengers was recorded in August - 582,199 or 34.8 per cent of the total for the quarter. The number of vehicles increased by 3.7 per cent, totalling 463,585 (Tables 1 and 2).

The number of trips amounted to 6,334, an increase of 0.2 per cent over the same period in 2016 (Table 1). Most trips took place in August - 2,158 or 34.1 per cent of total trips for the quarter (Table 2).

January-September

During this period passenger traffic originating from Ċirkewwa was busiest on Friday and Saturday, whereas highest volumes from Mġarr were recorded on Sunday and Saturday (Charts 3 and 4) ■

Chart 1. Passengers and vehicles crossing between Malta and Gozo

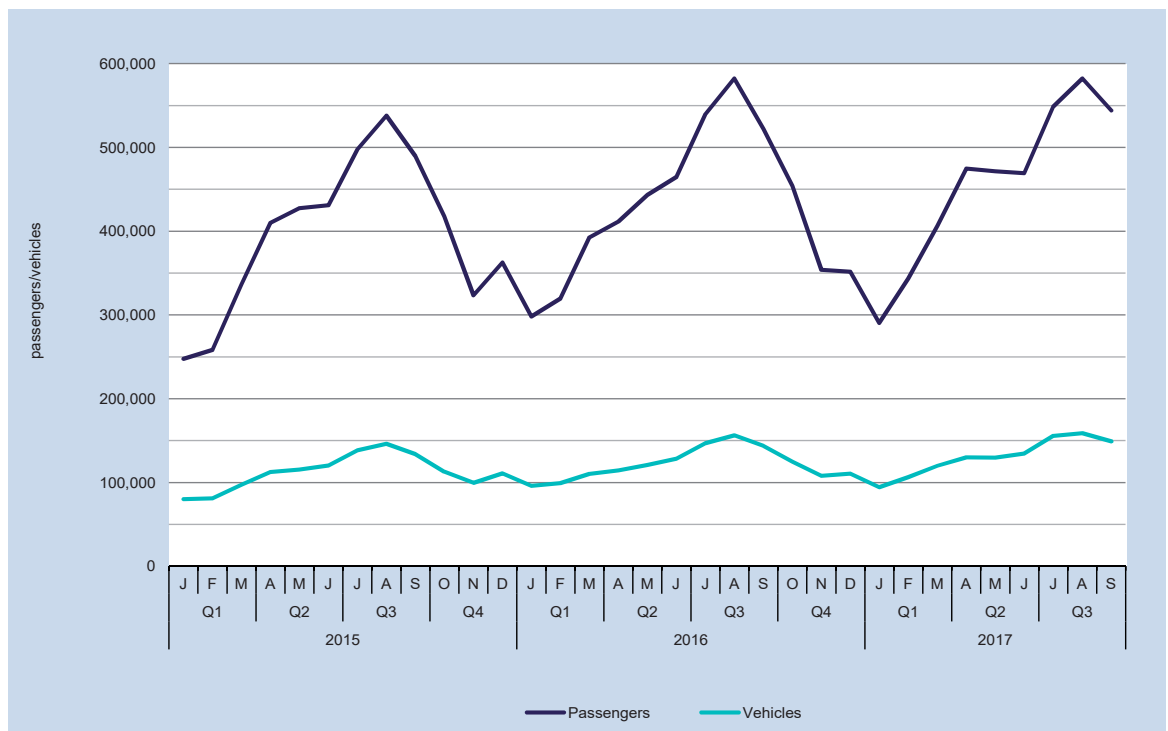


Table 1. Sea transport between Malta and Gozo by quarter

Quarter	2015	2016	2017	Change	Percentage change	
				2017/2016	2017/2016	
Trips	Jan-Mar	4,591	5,164	5,216	52	1.0
	Apr-Jun	5,136	5,426	5,541	115	2.1
	Jul-Sep	5,822	6,324	6,334	10	0.2
	Oct-Dec	5,274	5,490			
	Total	20,823	22,404			
Vehicles	Jan-Mar	258,648	305,409	320,432	15,023	4.9
	Apr-Jun	348,456	363,779	394,106	30,327	8.3
	Jul-Sep	418,190	446,890	463,585	16,695	3.7
	Oct-Dec	323,208	343,036			
	Total	1,348,502	1,459,114			
Passengers	Jan-Mar	842,193	1,010,213	1,040,188	29,975	3.0
	Apr-Jun	1,268,551	1,319,541	1,415,326	95,785	7.3
	Jul-Sep	1,525,143	1,643,898	1,674,618	30,720	1.9
	Oct-Dec	1,103,785	1,159,348			
	Total	4,739,672	5,133,000			

Chart 2. Passengers and vehicles to and from Malta and Gozo: Quarter 3

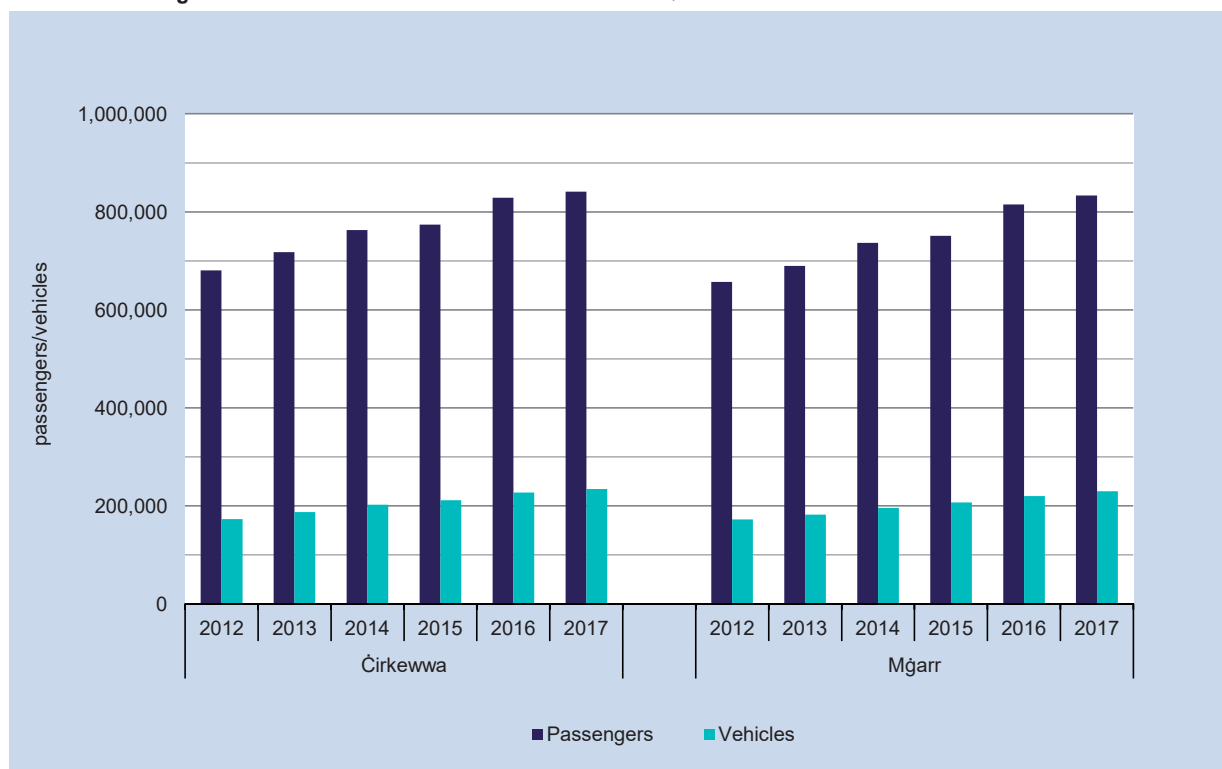


Table 2. Sea transport between Malta and Gozo by month

Month	2015	2016	2017	Change	Percentage change	
				2017/2016	2017/2016	
Trips	January	1,543	1,718	1,717	-1	-0.1
	February	1,448	1,658	1,669	11	0.7
	March	1,600	1,788	1,830	42	2.3
	April	1,614	1,730	1,834	104	6.0
	May	1,750	1,788	1,821	33	1.8
	June	1,772	1,908	1,886	-22	-1.2
	July	1,906	2,082	2,098	16	0.8
	August	2,006	2,178	2,158	-20	-0.9
	September	1,910	2,064	2,078	14	0.7
	October	1,836	1,956			
	November	1,654	1,756			
	December	1,784	1,778			
	Total	20,823	22,404			
Vehicles	January	80,082	95,996	94,258	-1,738	-1.8
	February	81,210	99,129	106,256	7,127	7.2
	March	97,356	110,284	119,918	9,634	8.7
	April	112,638	114,387	129,837	15,450	13.5
	May	115,440	120,991	129,726	8,735	7.2
	June	120,378	128,401	134,543	6,142	4.8
	July	138,281	146,998	155,624	8,626	5.9
	August	146,127	156,192	158,981	2,789	1.8
	September	133,782	143,700	148,980	5,280	3.7
	October	112,768	124,651			
	November	99,582	107,935			
	December	110,858	110,450			
	Total	1,348,502	1,459,114			
Passengers	January	247,609	298,071	290,357	-7,714	-2.6
	February	258,233	319,560	343,321	23,761	7.4
	March	336,351	392,582	406,510	13,928	3.5
	April	410,096	411,456	474,647	63,191	15.4
	May	427,338	443,447	471,397	27,950	6.3
	June	431,117	464,638	469,282	4,644	1.0
	July	497,596	539,530	548,452	8,922	1.7
	August	538,016	582,264	582,199	-65	0.0
	September	489,531	522,104	543,967	21,863	4.2
	October	417,869	454,022			
	November	323,322	353,830			
	December	362,594	351,496			
	Total	4,739,672	5,133,000			

Table 3. Sea transport to and from Malta and Gozo by month

Month	Ċirkewwa - Mġarr		Change	Percentage change	Mġarr - Ċirkewwa		Change	Percentage change	
	2016	2017	2017/2016	2017/2016	2016	2017	2017/2016	2017/2016	
Trips	January	859	858	-1	-0.1	859	859	0	0.0
	February	829	834	5	0.6	829	835	6	0.7
	March	894	915	21	2.3	894	915	21	2.3
	April	865	917	52	6.0	865	917	52	6.0
	May	894	910	16	1.8	894	911	17	1.9
	June	954	943	-11	-1.2	954	943	-11	-1.2
	July	1,041	1,049	8	0.8	1,041	1,049	8	0.8
	August	1,089	1,079	-10	-0.9	1,089	1,079	-10	-0.9
	September	1,032	1,039	7	0.7	1,032	1,039	7	0.7
	October	978				978			
	November	878				878			
	December	889				889			
	Total	11,202				11,202			
Vehicles	January	47,560	46,603	-957	-2.0	48,436	47,655	-781	-1.6
	February	49,795	54,073	4,278	8.6	49,334	52,183	2,849	5.8
	March	56,041	61,906	5,865	10.5	54,243	58,012	3,769	6.9
	April	57,595	65,349	7,754	13.5	56,792	64,488	7,696	13.6
	May	60,219	64,338	4,119	6.8	60,772	65,388	4,616	7.6
	June	65,182	69,380	4,198	6.4	63,219	65,163	1,944	3.1
	July	74,748	78,036	3,288	4.4	72,250	77,588	5,338	7.4
	August	79,340	80,338	998	1.3	76,852	78,643	1,791	2.3
	September	73,003	75,830	2,827	3.9	70,697	73,150	2,453	3.5
	October	62,689				61,962			
	November	54,220				53,715			
	December	57,448				53,002			
	Total	737,840				721,274			
Passengers	January	148,318	143,050	-5,268	-3.6	149,753	147,307	-2,446	-1.6
	February	161,957	173,284	11,327	7.0	157,603	170,037	12,434	7.9
	March	199,443	206,317	6,874	3.4	193,139	200,193	7,054	3.7
	April	206,761	237,070	30,309	14.7	204,695	237,577	32,882	16.1
	May	222,332	233,975	11,643	5.2	221,115	237,422	16,307	7.4
	June	237,761	239,320	1,559	0.7	226,877	229,962	3,085	1.4
	July	272,024	275,281	3,257	1.2	267,506	273,171	5,665	2.1
	August	294,794	291,236	-3,558	-1.2	287,470	290,963	3,493	1.2
	September	262,055	274,817	12,762	4.9	260,049	269,150	9,101	3.5
	October	226,493				227,529			
	November	175,791				178,039			
	December	178,363				173,133			
	Total	2,586,092				2,546,908			

Table 4. Sea transport between Malta and Gozo by day of the week

Day of the week		January-September			Change	Percentage change
		2015	2016	2017	2017/2016	2017/2016
Trips	Monday	2,192	2,400	2,414	14	0.6
	Tuesday	2,225	2,352	2,363	11	0.5
	Wednesday	2,060	2,300	2,338	38	1.7
	Thursday	2,195	2,400	2,462	62	2.6
	Friday	2,323	2,556	2,534	-22	-0.9
	Saturday	2,166	2,338	2,382	44	1.9
	Sunday	2,388	2,568	2,598	30	1.2
	Total	15,549	16,914	17,091	177	1.0
Vehicles	Monday	142,442	150,439	160,448	10,009	6.7
	Tuesday	135,702	146,506	152,891	6,385	4.4
	Wednesday	135,257	147,807	158,080	10,273	7.0
	Thursday	140,539	152,887	167,303	14,416	9.4
	Friday	165,029	178,804	185,176	6,372	3.6
	Saturday	146,764	162,152	173,866	11,714	7.2
	Sunday	159,561	177,483	180,359	2,876	1.6
	Total	1,025,294	1,116,078	1,178,123	62,045	5.6
Passengers	Monday	491,412	518,316	550,232	31,916	6.2
	Tuesday	465,011	510,443	520,790	10,347	2.0
	Wednesday	490,931	540,555	560,272	19,717	3.6
	Thursday	498,321	542,959	585,265	42,306	7.8
	Friday	553,766	604,623	619,162	14,539	2.4
	Saturday	564,429	621,091	647,946	26,855	4.3
	Sunday	572,017	635,665	646,465	10,800	1.7
	Total	3,635,887	3,973,652	4,130,132	156,480	3.9

Chart 3. Vehicles to and from Malta and Gozo by day of the week: January-September

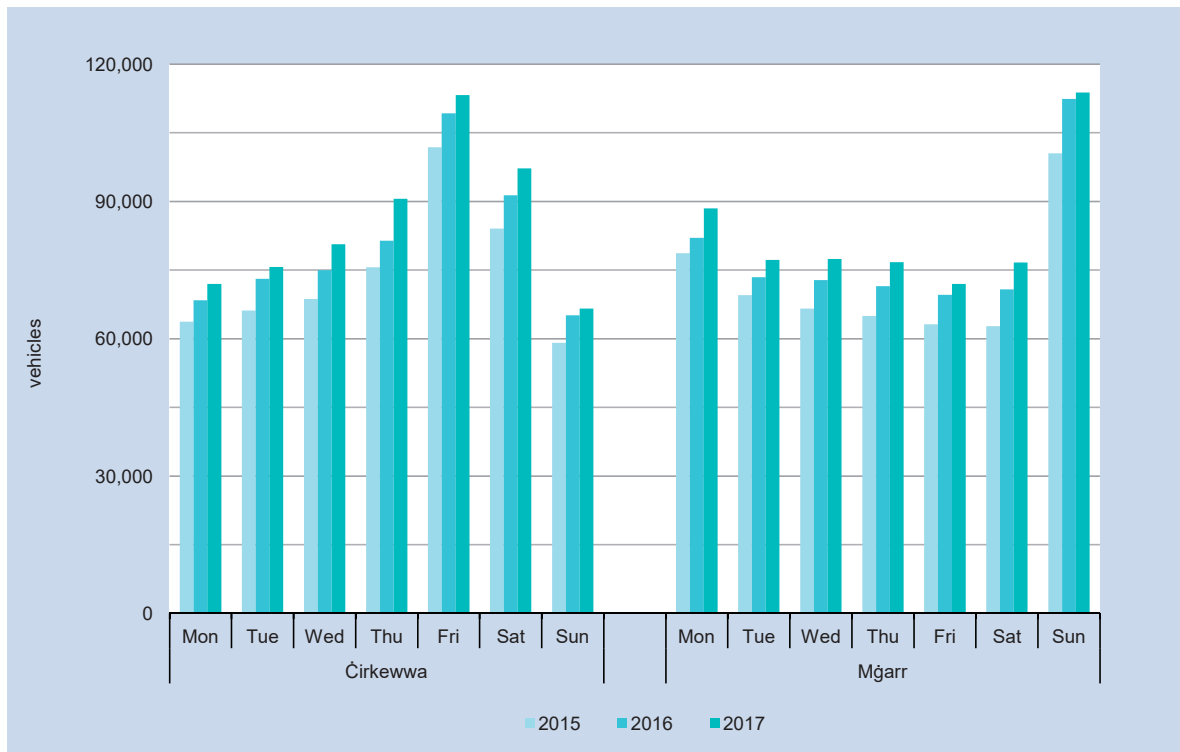
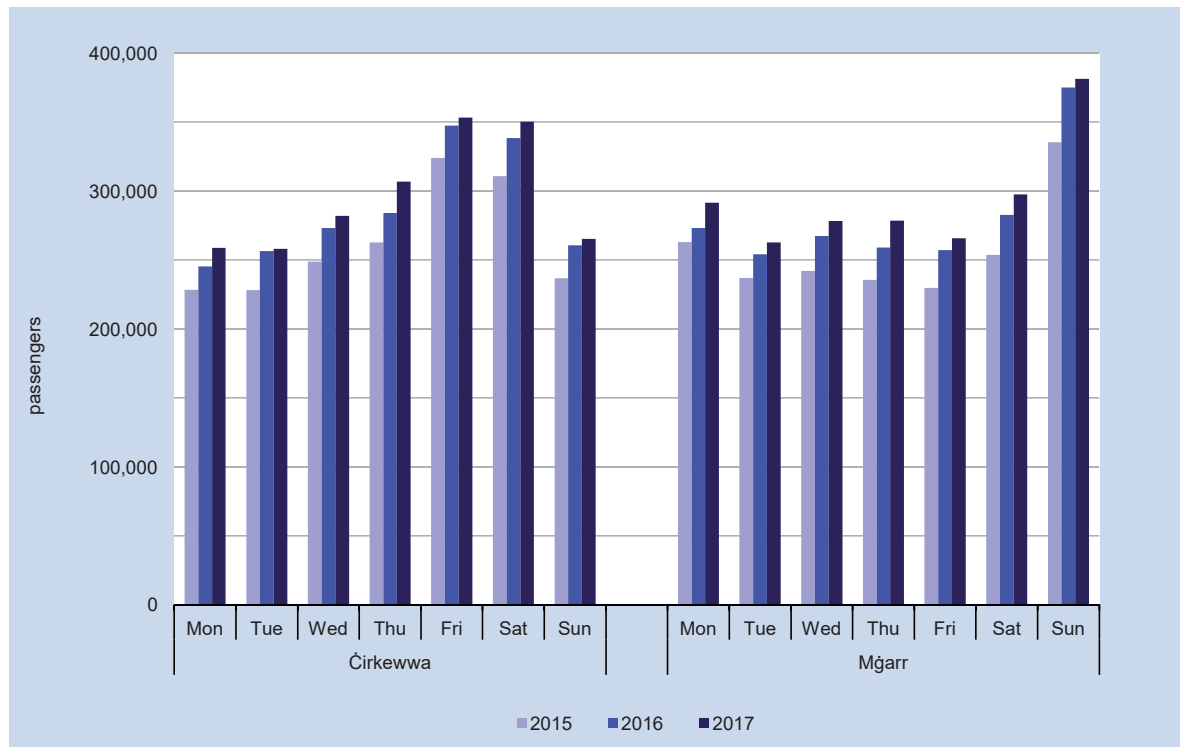


Chart 4. Passengers to and from Malta and Gozo by day of the week: January-September



Methodological Notes

1. The source for the data included in this release is administrative information provided by the Gozo Channel Co. Ltd.
2. The table below illustrates the passenger and vehicle capacity of each Gozo Channel vessel:

Carrying capacity

Vessel	Vehicles	Passengers
MV Gaudos	72	900
MV Malita	138	900
MV Ta' Pinu	138	900

Note: MV Malita was out of service for docking purposes between the 09/01/2017 - 02/02/2017, 14/02/2017-17/02/2017 and 08/05/2017 - 09/05/2017.

3. Data for passengers comprise: foot and vehicle passengers and vehicle drivers.
4. Different approaches are applied for the collection of data at the Mġarr and Ċirkewwa Harbours, respectively. While the data source for the Mġarr side is the Automated Ticketing System (ATS), data for the Ċirkewwa side is dependent on the manual clicking system.
5. The data are not normally subject to revision.
6. Any quotations from this news release are to be cited and/or referenced.
7. A detailed news release calendar is available on https://nso.gov.mt/en/News_Releases/Release_Calendar/Pages/News-Release-Calendar.aspx