

In April 2018, registered full-time employment increased by 6.5 per cent while part-time employment as a primary job increased by 2.3 per cent when compared to the corresponding month in 2017.

## Gainfully Occupied Population: March-April 2018

Administrative data provided by JobsPlus show that, over a period of one year, the labour supply (excluding part-timers) increased by 6.1 per cent, reaching 203,633 (see methodological note 5). This was mainly attributed to a year on year increase in the full-time gainfully occupied population (12,352) and a decline in registered unemployment (730) (Table 1).

### Registered full-time employment

In April 2018, administrative and support service activities (NACE 77-82), and professional, scientific and technical activities (NACE 69-75) contributed mostly to the increase in employment with 2,556 and 1,291 respectively, compared to April 2017 (Table 1). Registered full-time employment in the private sector went up by 10,883 persons to 154,902. Public sector full-time employment increased by 1,469 persons to 46,884 (Table 2).

The number of persons registered as full-time self-employed rose by 942 when compared to April 2017, while the number of persons registered as employees increased by 11,410. Full-time employment for males and females went up by 5.2 per cent and 8.7 per cent respectively over 2017 levels (Table 2).

### Registered part-time employment

Registered part-time employment in April 2018 went up by 5.0 per cent when compared to a year earlier. The sectors that contributed most to the overall increase were professional, scientific and technical activities (NACE 69-75) and wholesale and retail trade; repair of motor vehicles and motorcycles (NACE 45-47), 655 and 451 respectively. On the other hand, administrative and support services activities (NACE 77-82) registered a drop of 303 when compared to April 2017 (Table 3).

The number of part-timers who also held a full-time job amounted to 26,759 up by 8.8 per cent when compared to the corresponding month in 2017. Employed persons whose part-time job was their primary occupation totalled 35,118, up by 2.3 per cent when compared to 2017 (Table 4) ■

**Chart 1. Annual percentage change in full-time and part-time employment**

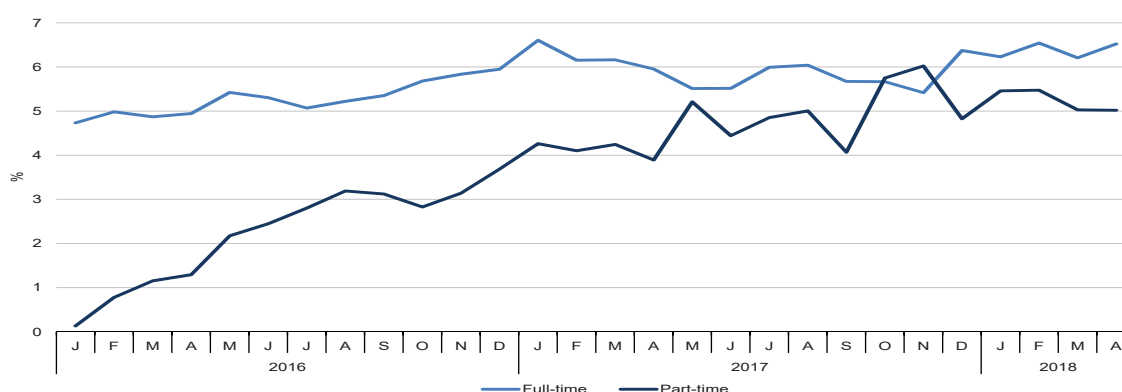


Table 1. Full-time employment classified by period and economic activity ...

NACE division	Economic activity	Average 2016	Average 2017 (Revised)	March 2017 (Revised)	March 2018	April 2017 (Revised)	April 2018
<b>01-03</b>	<b>Agriculture, forestry and fishing</b>	<b>2,281</b>	<b>2,299</b>	<b>2,297</b>	<b>2,371</b>	<b>2,284</b>	<b>2,388</b>
01	Crop and animal production, hunting and related service activities	1,698	1,694	1,707	1,726	1,690	1,721
02	Forestry and logging	-	-	-	-	-	-
03	Fishing and aquaculture	583	605	590	645	594	667
<b>05-09</b>	<b>Mining and quarrying</b>	<b>378</b>	<b>366</b>	<b>368</b>	<b>376</b>	<b>360</b>	<b>367</b>
05	Mining of coal and lignite	-	-	-	-	-	-
06	Extraction of crude petroleum and natural gas	-	-	-	-	-	-
07	Mining of metal ores	-	-	-	-	-	-
08	Other mining and quarrying	172	176	171	188	167	185
09	Mining support service activities	206	190	197	188	193	182
<b>10-33</b>	<b>Manufacturing</b>	<b>20,874</b>	<b>21,088</b>	<b>21,019</b>	<b>21,664</b>	<b>20,970</b>	<b>21,733</b>
10	Manufacture of food products	2,675	2,684	2,682	2,715	2,663	2,720
11	Manufacture of beverages	874	886	876	894	886	894
12	Manufacture of tobacco products	16	15	14	15	15	15
13	Manufacture of textiles	330	338	331	359	332	356
14	Manufacture of wearing apparel	216	141	143	137	148	148
15	Manufacture of leather and related products	27	20	25	16	26	17
16	Manufacture of wood and of products of wood and cork, except furniture; manufacture of articles of straw and plaiting materials	344	341	347	334	340	335
17	Manufacture of paper and paper products	206	218	209	220	212	225
18	Printing and reproduction of recorded media	1,240	1,258	1,225	1,528	1,219	1,541
19	Manufacture of coke and refined petroleum products	10	10	9	10	10	10
20	Manufacture of chemicals and chemical products	306	310	311	314	315	314
21	Manufacture of basic pharmaceutical products and pharmaceutical preparations	1,164	1,075	1,095	997	1,081	995
22	Manufacture of rubber and plastic products	1,707	1,759	1,764	1,754	1,753	1,752
23	Manufacture of other non-metallic mineral products	1,081	1,037	1,062	1,026	1,045	1,029
24	Manufacture of basic metals	166	194	172	257	158	246
25	Manufacture of fabricated metal products, except machinery and equipment	1,216	1,224	1,262	1,173	1,271	1,183
26	Manufacture of computer, electronic and optical products	2,188	2,242	2,206	2,318	2,208	2,318
27	Manufacture of electrical equipment	514	516	505	514	511	525
28	Manufacture of machinery and equipment n.e.c.	493	503	514	520	508	517
29	Manufacture of motor vehicles, trailers and semi-trailers	1,122	1,110	1,113	1,150	1,106	1,148
30	Manufacture of other transport equipment	106	141	130	176	128	185
31	Manufacture of furniture	1,139	1,122	1,123	1,141	1,123	1,133
32	Other manufacturing	2,239	2,366	2,354	2,428	2,353	2,440

... Table 1. Full-time employment classified by period and economic activity

NACE division	Economic activity	Average 2016	Average 2017 (Revised)	March 2017 (Revised)	March 2018	April 2017 (Revised)	April 2018
33	Repair and installation of machinery and equipment	1,495	1,578	1,547	1,668	1,559	1,687
<b>35</b>	<b>Electricity, gas, steam and air conditioning supply</b>	<b>59</b>	<b>115</b>	<b>97</b>	<b>146</b>	<b>102</b>	<b>152</b>
<b>36-39</b>	<b>Water supply; sewerage, waste management and remediation activities</b>	<b>1,441</b>	<b>1,592</b>	<b>1,567</b>	<b>1,672</b>	<b>1,593</b>	<b>1,680</b>
36	Water collection, treatment and supply	1,017	1,171	1,131	1,241	1,159	1,244
37	Sewerage	7	9	8	7	9	8
38	Waste collection, treatment and disposal activities; materials recovery	398	381	395	381	392	384
39	Remediation activities and other waste management services	19	31	33	43	33	44
<b>41-43</b>	<b>Construction</b>	<b>10,842</b>	<b>11,207</b>	<b>11,131</b>	<b>11,613</b>	<b>11,259</b>	<b>11,771</b>
41	Construction of buildings	4,189	4,336	4,315	4,550	4,311	4,580
42	Civil engineering	859	906	910	919	894	913
43	Specialised construction activities	5,794	5,965	5,906	6,144	6,054	6,278
<b>45-47</b>	<b>Wholesale and retail trade; repair of motor vehicles and motorcycles</b>	<b>25,614</b>	<b>26,337</b>	<b>26,292</b>	<b>26,578</b>	<b>26,306</b>	<b>26,723</b>
45	Wholesale and retail trade and repair of motor vehicles and motorcycles	2,420	2,436	2,416	2,456	2,444	2,467
46	Wholesale trade, except of motor vehicles and motorcycles	9,544	9,977	9,911	10,161	9,866	10,174
47	Retail trade, except of motor vehicles and motorcycles	13,650	13,924	13,965	13,961	13,996	14,082
<b>49-53</b>	<b>Transportation and storage</b>	<b>9,838</b>	<b>10,168</b>	<b>9,961</b>	<b>10,520</b>	<b>9,972</b>	<b>10,594</b>
49	Land transport and transport via pipelines	3,423	3,514	3,520	3,526	3,562	3,651
50	Water transport	458	463	464	480	458	488
51	Air transport	1,338	1,290	1,258	1,437	1,234	1,415
52	Warehousing and support activities for transportation	3,919	4,103	3,973	4,191	3,933	4,156
53	Postal and courier activities	700	798	746	886	785	884
<b>55-56</b>	<b>Accommodation and food service activities</b>	<b>11,404</b>	<b>12,320</b>	<b>11,939</b>	<b>13,075</b>	<b>12,109</b>	<b>13,172</b>
55	Accommodation	5,496	5,692	5,514	5,851	5,577	5,857
56	Food and beverage service activities	5,908	6,628	6,425	7,224	6,532	7,315
<b>58-63</b>	<b>Information and communication</b>	<b>6,829</b>	<b>7,381</b>	<b>7,246</b>	<b>7,462</b>	<b>7,321</b>	<b>7,485</b>
58	Publishing activities	546	614	616	651	613	659
59	Motion picture, video and television programme production, sound recording and music publishing activities	310	355	348	315	374	321
60	Programming and broadcasting activities	244	247	247	250	247	248
61	Telecommunications	1,677	1,684	1,675	1,724	1,671	1,728
62	Computer programming, consultancy and related activities	3,302	3,681	3,572	3,679	3,630	3,707
63	Information service activities	750	800	788	843	786	822
<b>64-66</b>	<b>Financial and insurance activities</b>	<b>8,987</b>	<b>9,618</b>	<b>9,474</b>	<b>10,194</b>	<b>9,535</b>	<b>10,268</b>
64	Financial service activities, except insurance and pension funding	6,381	6,839	6,737	7,270	6,765	7,288
65	Insurance, reinsurance and pension funding, except compulsory social security	868	912	901	965	875	948

... Table 1. Full-time employment classified by period and economic activity

NACE division	Economic activity	Average 2016	Average 2017 (Revised)	March 2017 (Revised)	March 2018	April 2017 (Revised)	April 2018
66	Activities auxiliary to financial services and insurance activities	1,738	1,867	1,836	1,959	1,895	2,032
<b>68</b>	<b>Real estate activities</b>	<b>1,501</b>	<b>1,649</b>	<b>1,623</b>	<b>1,745</b>	<b>1,654</b>	<b>1,782</b>
<b>69-75</b>	<b>Professional, scientific and technical activities</b>	<b>11,017</b>	<b>12,175</b>	<b>11,834</b>	<b>13,008</b>	<b>11,884</b>	<b>13,175</b>
69	Legal and accounting activities	3,551	3,884	3,826	3,870	3,832	3,912
70	Activities of head offices; management consultancy activities	2,973	3,423	3,177	4,140	3,208	4,223
71	Architectural and engineering activities; technical testing and analysis	1,992	2,148	2,152	2,219	2,146	2,219
72	Scientific research and development	30	37	35	42	40	47
73	Advertising and market research	1,683	1,833	1,815	1,876	1,824	1,915
74	Other professional, scientific and technical activities	696	751	735	753	736	752
75	Veterinary activities	92	99	94	108	98	107
<b>77-82</b>	<b>Administrative and support service activities</b>	<b>15,204</b>	<b>17,177</b>	<b>16,336</b>	<b>18,846</b>	<b>16,432</b>	<b>18,988</b>
77	Rental and leasing activities	1,262	1,335	1,343	1,430	1,345	1,431
78	Employment activities	3,797	4,196	4,098	4,783	4,093	4,781
79	Travel agency, tour operator and other reservation service and related activities	1,157	1,213	1,182	1,225	1,207	1,226
80	Security and investigation activities	2,368	2,734	2,445	2,903	2,490	2,916
81	Services to buildings and landscape activities	3,618	4,332	4,009	4,750	4,056	4,884
82	Office administrative, office support and other business support activities	3,002	3,367	3,259	3,755	3,241	3,750
<b>84</b>	<b>Public administration and defence; compulsory social security</b>	<b>13,096</b>	<b>14,103</b>	<b>13,934</b>	<b>14,669</b>	<b>13,890</b>	<b>14,700</b>
<b>85</b>	<b>Education</b>	<b>16,279</b>	<b>16,802</b>	<b>16,641</b>	<b>17,218</b>	<b>16,657</b>	<b>17,250</b>
<b>86-88</b>	<b>Human health and social work activities</b>	<b>14,763</b>	<b>14,992</b>	<b>14,651</b>	<b>15,433</b>	<b>14,705</b>	<b>15,555</b>
86	Human health activities	8,995	8,618	8,585	8,790	8,593	8,849
87	Residential care activities	4,386	4,896	4,729	5,236	4,772	5,295
88	Social work activities without accommodation	1,382	1,478	1,337	1,407	1,340	1,411
<b>90-93</b>	<b>Arts, entertainment and recreation</b>	<b>6,918</b>	<b>8,273</b>	<b>8,003</b>	<b>9,191</b>	<b>8,055</b>	<b>9,280</b>
90	Creative, arts and entertainment activities	477	567	535	634	551	662
91	Libraries, archives, museums and other cultural activities	394	399	407	405	407	405
92	Gambling and betting activities	5,247	6,432	6,204	7,193	6,221	7,246
93	Sports activities and amusement and recreation activities	800	875	857	959	876	967
<b>94-96</b>	<b>Other service activities</b>	<b>3,595</b>	<b>3,857</b>	<b>3,783</b>	<b>4,102</b>	<b>3,745</b>	<b>4,117</b>
94	Activities of membership organisations	759	809	816	858	802	867
95	Repair of computers and personal and household goods	283	308	300	321	317	338
96	Other personal service activities	2,553	2,740	2,667	2,923	2,626	2,912
<b>97-98</b>	<b>Activities of households as employers; undifferentiated goods- and services-producing activities of households for own use</b>	<b>49</b>	<b>174</b>	<b>356</b>	<b>390</b>	<b>375</b>	<b>387</b>
97 <sup>1</sup>	Activities of households as employers of domestic personnel	49	174	355	389	374	386

... Table 1. Full-time employment classified by period and economic activity

NACE division	Economic activity	Average 2016	Average 2017 (Revised)	March 2017 (Revised)	March 2018	April 2017 (Revised)	April 2018
98	Undifferentiated goods- and services-producing activities of private households for own use	-	-	1	1	1	1
99	Activities of extraterritorial organisations and bodies	223	222	225	217	226	219
01-99	<b>Total Gainfully Occupied (including apprentices)</b>	<b>181,192</b>	<b>191,915</b>	<b>188,777</b>	<b>200,490</b>	<b>189,434</b>	<b>201,786</b>
	<b>Registered Unemployed</b>	<b>3,566</b>	<b>2,500</b>	<b>2,649</b>	<b>1,954</b>	<b>2,577</b>	<b>1,847</b>
	Part I	3,266	2,271	2,408	1,787	2,323	1,707
	Part II	300	229	241	167	254	140
	<b>Labour Supply (excluding part-time employment)</b>	<b>184,758</b>	<b>194,415</b>	<b>191,426</b>	<b>202,444</b>	<b>192,011</b>	<b>203,633</b>

<sup>1</sup> Refer to methodological note 6

Table 2. Full-time employment classified by period, economic activity and category ...

NACE division	Economic activity	Category	Average 2016	Average 2017 (Revised)	March 2017 (Revised)	March 2018	April 2017 (Revised)	April 2018
01-03	Agriculture, forestry and fishing	Private Sector	1,915	1,929	1,941	1,985	1,928	1,994
		Public Sector	366	370	356	386	356	394
		Males	2,032	2,017	2,018	2,055	2,013	2,070
		Females	249	282	279	316	271	318
		Self-employed	1,401	1,377	1,385	1,376	1,379	1,377
		Employees	880	922	912	995	905	1,011
		Malta	1,822	1,840	1,832	1,898	1,827	1,918
		Gozo	459	459	465	473	457	470
		<b>Total</b>	<b>2,281</b>	<b>2,299</b>	<b>2,297</b>	<b>2,371</b>	<b>2,284</b>	<b>2,388</b>
05-09	Mining and quarrying	Private Sector	378	366	368	376	360	367
		Public Sector	-	-	-	-	-	-
		Males	338	330	332	339	324	329
		Females	40	36	36	37	36	38
		Self-employed	76	78	74	83	70	77
		Employees	302	288	294	293	290	290
		Malta	347	337	342	338	335	330
		Gozo	31	29	26	38	25	37
		<b>Total</b>	<b>378</b>	<b>366</b>	<b>368</b>	<b>376</b>	<b>360</b>	<b>367</b>
10-33	Manufacturing	Private Sector	20,716	20,923	20,851	21,499	20,804	21,567
		Public Sector	158	165	168	165	166	166
		Males	15,551	15,595	15,584	15,889	15,530	15,889
		Females	5,323	5,493	5,435	5,775	5,440	5,844
		Self-employed	1,559	1,574	1,592	1,610	1,540	1,557
		Employees	19,315	19,514	19,427	20,054	19,430	20,176
		Malta	19,847	20,030	19,967	20,592	19,917	20,649
		Gozo	1,027	1,058	1,052	1,072	1,053	1,084
		<b>Total</b>	<b>20,874</b>	<b>21,088</b>	<b>21,019</b>	<b>21,664</b>	<b>20,970</b>	<b>21,733</b>
35	Electricity, gas, steam and air conditioning supply	Private Sector	21	30	30	28	31	31
		Public Sector	38	85	67	118	71	121
		Males	48	101	83	127	88	134
		Females	11	14	14	19	14	18
		Self-employed	2	-	-	-	-	-
		Employees	57	115	97	146	102	152
		Malta	59	115	97	146	102	152
		Gozo	-	-	-	-	-	-
		<b>Total</b>	<b>59</b>	<b>115</b>	<b>97</b>	<b>146</b>	<b>102</b>	<b>152</b>

... Table 2. Full-time employment classified by period, economic activity and category

NACE division	Economic activity	Category	Average 2016	Average 2017 (Revised)	March 2017 (Revised)	March 2018	April 2017 (Revised)	April 2018
36-39	Water supply; sewerage, waste management and remediation activities	Private Sector	352	358	368	375	368	383
		Public Sector	1,089	1,234	1,199	1,297	1,225	1,297
		Males	1,248	1,365	1,355	1,431	1,381	1,433
		Females	193	227	212	241	212	247
		Self-employed	77	78	77	81	80	84
		Employees	1,364	1,514	1,490	1,591	1,513	1,596
		Malta	1,333	1,496	1,469	1,578	1,496	1,586
		Gozo	108	96	98	94	97	94
		<b>Total</b>	<b>1,441</b>	<b>1,592</b>	<b>1,567</b>	<b>1,672</b>	<b>1,593</b>	<b>1,680</b>
41-43	Construction	Private Sector	9,819	10,257	10,166	10,686	10,300	10,842
		Public Sector	1,023	950	965	927	959	929
		Males	10,285	10,597	10,547	10,935	10,661	11,082
		Females	557	610	584	678	598	689
		Self-employed	3,001	3,115	3,095	3,228	3,159	3,296
		Employees	7,841	8,092	8,036	8,385	8,100	8,475
		Malta	9,849	10,167	10,099	10,545	10,221	10,708
		Gozo	993	1,040	1,032	1,068	1,038	1,063
		<b>Total</b>	<b>10,842</b>	<b>11,207</b>	<b>11,131</b>	<b>11,613</b>	<b>11,259</b>	<b>11,771</b>
45-47	Wholesale and retail trade; repair of motor vehicles and motorcycles	Private Sector	25,478	26,047	26,020	26,268	26,033	26,410
		Public Sector	136	290	272	310	273	313
		Males	16,920	17,208	17,222	17,219	17,243	17,280
		Females	8,694	9,129	9,070	9,359	9,063	9,443
		Self-employed	5,383	5,394	5,399	5,369	5,433	5,396
		Employees	20,231	20,943	20,893	21,209	20,873	21,327
		Malta	24,260	24,994	24,961	25,204	24,979	25,342
		Gozo	1,354	1,343	1,331	1,374	1,327	1,381
		<b>Total</b>	<b>25,614</b>	<b>26,337</b>	<b>26,292</b>	<b>26,578</b>	<b>26,306</b>	<b>26,723</b>
49-53	Transportation and storage	Private Sector	7,969	8,324	8,223	8,587	8,243	8,662
		Public Sector	1,869	1,844	1,738	1,933	1,729	1,932
		Males	8,081	8,277	8,176	8,513	8,165	8,578
		Females	1,757	1,891	1,785	2,007	1,807	2,016
		Self-employed	981	993	993	1,053	999	1,088
		Employees	8,857	9,175	8,968	9,467	8,973	9,506
		Malta	9,357	9,681	9,475	10,025	9,482	10,095
		Gozo	481	487	486	495	490	499
		<b>Total</b>	<b>9,838</b>	<b>10,168</b>	<b>9,961</b>	<b>10,520</b>	<b>9,972</b>	<b>10,594</b>

... Table 2. Full-time employment classified by period, economic activity and category

NACE division	Economic activity	Category	Average 2016	Average 2017 (Revised)	March 2017 (Revised)	March 2018	April 2017 (Revised)	April 2018
55-56	Accommodation and food service activities	Private Sector	11,404	12,320	11,939	13,075	12,109	13,172
		Public Sector	-	-	-	-	-	-
		Males	7,677	8,149	7,966	8,562	8,038	8,648
		Females	3,727	4,171	3,973	4,513	4,071	4,524
		Self-employed	1,328	1,398	1,396	1,431	1,415	1,458
		Employees	10,076	10,922	10,543	11,644	10,694	11,714
		Malta	10,527	11,364	11,023	12,069	11,173	12,143
		Gozo	877	956	916	1,006	936	1,029
		<b>Total</b>	<b>11,404</b>	<b>12,320</b>	<b>11,939</b>	<b>13,075</b>	<b>12,109</b>	<b>13,172</b>
58-63	Information and communication	Private Sector	6,194	6,745	6,612	6,816	6,682	6,842
		Public Sector	635	636	634	646	639	643
		Males	4,852	5,260	5,150	5,352	5,222	5,366
		Females	1,977	2,121	2,096	2,110	2,099	2,119
		Self-employed	370	430	420	463	422	464
		Employees	6,459	6,951	6,826	6,999	6,899	7,021
		Malta	6,550	7,088	6,957	7,165	7,034	7,183
		Gozo	279	293	289	297	287	302
		<b>Total</b>	<b>6,829</b>	<b>7,381</b>	<b>7,246</b>	<b>7,462</b>	<b>7,321</b>	<b>7,485</b>
64-66	Financial and insurance activities	Private Sector	8,194	8,806	8,672	9,367	8,735	9,437
		Public Sector	793	812	802	827	800	831
		Males	4,371	4,661	4,603	4,935	4,645	4,986
		Females	4,616	4,957	4,871	5,259	4,890	5,282
		Self-employed	128	131	133	134	127	127
		Employees	8,859	9,487	9,341	10,060	9,408	10,141
		Malta	8,668	9,281	9,150	9,833	9,210	9,907
		Gozo	319	337	324	361	325	361
		<b>Total</b>	<b>8,987</b>	<b>9,618</b>	<b>9,474</b>	<b>10,194</b>	<b>9,535</b>	<b>10,268</b>
68	Real estate activities	Private Sector	1,228	1,382	1,342	1,466	1,386	1,516
		Public Sector	273	267	281	279	268	266
		Males	1,030	1,097	1,096	1,145	1,111	1,164
		Females	471	552	527	600	543	618
		Self-employed	454	529	521	560	560	616
		Employees	1,047	1,120	1,102	1,185	1,094	1,166
		Malta	1,405	1,539	1,518	1,621	1,544	1,653
		Gozo	96	110	105	124	110	129
		<b>Total</b>	<b>1,501</b>	<b>1,649</b>	<b>1,623</b>	<b>1,745</b>	<b>1,654</b>	<b>1,782</b>



... Table 2. Full-time employment classified by period, economic activity and category

NACE division	Economic activity	Category	Average 2016	Average 2017 (Revised)	March 2017 (Revised)	March 2018	April 2017 (Revised)	April 2018
69-75	Professional, scientific and technical activities	Private Sector	10,891	12,039	11,690	12,859	11,737	13,024
		Public Sector	126	136	144	149	147	151
		Males	6,279	6,928	6,785	7,350	6,812	7,438
		Females	4,738	5,247	5,049	5,658	5,072	5,737
		Self-employed	1,679	1,894	1,850	2,067	1,865	2,092
		Employees	9,338	10,281	9,984	10,941	10,019	11,083
		Malta	10,669	11,758	11,432	12,551	11,473	12,704
		Gozo	348	417	402	457	411	471
		<b>Total</b>	<b>11,017</b>	<b>12,175</b>	<b>11,834</b>	<b>13,008</b>	<b>11,884</b>	<b>13,175</b>
77-82	Administrative and support service activities	Private Sector	12,297	14,233	13,369	15,947	13,474	16,097
		Public Sector	2,907	2,944	2,967	2,899	2,958	2,891
		Males	9,601	10,734	10,258	11,653	10,345	11,703
		Females	5,603	6,443	6,078	7,193	6,087	7,285
		Self-employed	921	986	978	1,055	951	1,041
		Employees	14,283	16,191	15,358	17,791	15,481	17,947
		Malta	14,481	16,218	15,505	17,604	15,602	17,747
		Gozo	723	959	831	1,242	830	1,241
		<b>Total</b>	<b>15,204</b>	<b>17,177</b>	<b>16,336</b>	<b>18,846</b>	<b>16,432</b>	<b>18,988</b>
84	Public administration and defence; compulsory social security	Private Sector	-	-	-	-	-	-
		Public Sector	13,096	14,103	13,934	14,669	13,890	14,700
		Males	8,645	9,134	9,040	9,414	9,011	9,425
		Females	4,451	4,969	4,894	5,255	4,879	5,275
		Self-employed	-	-	-	-	-	-
		Employees	13,096	14,103	13,934	14,669	13,890	14,700
		Malta	12,203	13,137	12,993	13,670	12,948	13,707
		Gozo	893	966	941	999	942	993
		<b>Total</b>	<b>13,096</b>	<b>14,103</b>	<b>13,934</b>	<b>14,669</b>	<b>13,890</b>	<b>14,700</b>
85	Education	Private Sector	5,063	5,278	5,175	5,472	5,195	5,496
		Public Sector	11,216	11,524	11,466	11,746	11,462	11,754
		Males	4,927	5,020	4,965	5,078	4,965	5,089
		Females	11,352	11,782	11,676	12,140	11,692	12,161
		Self-employed	326	339	333	345	343	360
		Employees	15,953	16,463	16,308	16,873	16,314	16,890
		Malta	15,051	15,522	15,414	15,849	15,428	15,875
		Gozo	1,228	1,280	1,227	1,369	1,229	1,375
		<b>Total</b>	<b>16,279</b>	<b>16,802</b>	<b>16,641</b>	<b>17,218</b>	<b>16,657</b>	<b>17,250</b>

... Table 2. Full-time employment classified by period, economic activity and category

NACE division	Economic activity	Category	Average 2016	Average 2017 (Revised)	March 2017 (Revised)	March 2018	April 2017 (Revised)	April 2018
86-88	Human health and social work activities	Private Sector	4,460	5,192	4,799	5,626	4,860	5,715
		Public Sector	10,303	9,800	9,852	9,807	9,845	9,840
		Males	5,428	5,364	5,304	5,486	5,316	5,519
		Females	9,335	9,628	9,347	9,947	9,389	10,036
		Self-employed	386	428	414	452	413	447
		Employees	14,377	14,564	14,237	14,981	14,292	15,108
		Malta	13,721	13,941	13,637	14,328	13,693	14,446
		Gozo	1,042	1,051	1,014	1,105	1,012	1,109
		<b>Total</b>	<b>14,763</b>	<b>14,992</b>	<b>14,651</b>	<b>15,433</b>	<b>14,705</b>	<b>15,555</b>
90-93	Arts, entertainment and recreation	Private Sector	6,360	7,694	7,434	8,596	7,485	8,686
		Public Sector	558	579	569	595	570	594
		Males	4,488	5,303	5,144	5,875	5,186	5,922
		Females	2,430	2,970	2,859	3,316	2,869	3,358
		Self-employed	509	561	548	593	554	610
		Employees	6,409	7,712	7,455	8,598	7,501	8,670
		Malta	6,708	8,057	7,788	8,954	7,846	9,038
		Gozo	210	216	215	237	209	242
		<b>Total</b>	<b>6,918</b>	<b>8,273</b>	<b>8,003</b>	<b>9,191</b>	<b>8,055</b>	<b>9,280</b>
94-96	Other service activities	Private Sector	3,534	3,797	3,719	4,040	3,688	4,055
		Public Sector	61	60	64	62	57	62
		Males	1,597	1,685	1,668	1,759	1,627	1,763
		Females	1,998	2,172	2,115	2,343	2,118	2,354
		Self-employed	1,676	1,792	1,761	1,902	1,724	1,886
		Employees	1,919	2,065	2,022	2,200	2,021	2,231
		Malta	3,425	3,680	3,610	3,910	3,571	3,916
		Gozo	170	177	173	192	174	201
		<b>Total</b>	<b>3,595</b>	<b>3,857</b>	<b>3,783</b>	<b>4,102</b>	<b>3,745</b>	<b>4,117</b>
97-98 <sup>1</sup>	Activities of households as employers; undifferentiated goods- and services-producing activities of households for own use	Private Sector	49	174	356	390	375	387
		Public Sector	-	-	-	-	-	-
		Males	9	20	39	43	39	40
		Females	40	154	317	347	336	347
		Self-employed	5	5	7	7	5	5
		Employees	44	169	349	383	370	382
		Malta	49	169	351	378	368	376
		Gozo	-	5	5	12	7	11
		<b>Total</b>	<b>49</b>	<b>174</b>	<b>356</b>	<b>390</b>	<b>375</b>	<b>387</b>

... Table 2. Full-time employment classified by period, economic activity and category

NACE division	Economic activity	Category	Average 2016	Average 2017 (Revised)	March 2017 (Revised)	March 2018	April 2017 (Revised)	April 2018
99	Activities of extraterritorial organisations and bodies	Private Sector	223	222	225	217	226	219
		Public Sector	-	-	-	-	-	-
		Males	143	140	142	137	142	141
		Females	80	82	83	80	84	78
		Self-employed	1	-	-	-	-	-
		Employees	222	222	225	217	226	219
		Malta	223	222	225	217	226	219
		Gozo	-	-	-	-	-	-
		<b>Total</b>	<b>223</b>	<b>222</b>	<b>225</b>	<b>217</b>	<b>226</b>	<b>219</b>
01-99	Total Gainfully Occupied (including apprentices)	Private Sector	136,545	146,116	143,299	153,675	144,019	154,902
		Public Sector	44,647	45,799	45,478	46,815 <sup>2</sup>	45,415	46,884 <sup>2</sup>
		Males	113,550	118,985	117,477	123,297	117,864	123,999
		Females	67,642	72,930	71,300	77,193	71,570	77,787
		Self-employed	20,263	21,102	20,976	21,809	21,039	21,981
		Employees	160,929	170,813	167,801	178,681	168,395	179,805
		Malta	170,554	180,636	177,845	188,475	178,475	189,694
		Gozo	10,638	11,279	10,932	12,015	10,959	12,092
		<b>Total</b>	<b>181,192</b>	<b>191,915</b>	<b>188,777</b>	<b>200,490</b>	<b>189,434</b>	<b>201,786</b>

<sup>1</sup> Refer to methodological note 6

<sup>2</sup> Public sector employment in March and April 2018 stood at 46,815 and 46,884 respectively, while the full-time equivalent (FTE) was calculated at 43,223 and 43,292 respectively. Refer to methodological note 5.

Table 3. Part-time employment classified by period and economic activity ...

NACE division	Economic activity	Average 2016	Average 2017 (Revised)	March 2017 (Revised)	March 2018	April 2017 (Revised)	April 2018
<b>01-03</b>	<b>Agriculture, forestry and fishing</b>	<b>2,205</b>	<b>2,315</b>	<b>2,280</b>	<b>2,405</b>	<b>2,284</b>	<b>2,408</b>
01	Crop and animal production, hunting and related service activities	1,595	1,684	1,674	1,760	1,680	1,768
02	Forestry and logging	-	-	-	-	-	1
03	Fishing and aquaculture	610	631	606	645	604	639
<b>05-09</b>	<b>Mining and quarrying</b>	<b>31</b>	<b>39</b>	<b>36</b>	<b>38</b>	<b>37</b>	<b>38</b>
05	Mining of coal and lignite	-	-	-	-	-	-
06	Extraction of crude petroleum and natural gas	-	-	-	-	-	-
07	Mining of metal ores	-	-	-	-	-	-
08	Other mining and quarrying	26	31	30	31	29	31
09	Mining support service activities	5	8	6	7	8	7
<b>10-33</b>	<b>Manufacturing</b>	<b>2,845</b>	<b>2,983</b>	<b>2,925</b>	<b>3,104</b>	<b>2,891</b>	<b>3,088</b>
10	Manufacture of food products	697	689	683	723	673	729
11	Manufacture of beverages	66	73	67	83	69	80
12	Manufacture of tobacco products	2	2	2	2	2	2
13	Manufacture of textiles	45	56	53	59	53	57
14	Manufacture of wearing apparel	73	65	63	60	66	70
15	Manufacture of leather and related products	9	8	9	6	8	5
16	Manufacture of wood and of products of wood and cork, except furniture; manufacture of articles of straw and plaiting materials	62	63	65	62	61	61
17	Manufacture of paper and paper products	18	19	18	22	18	21
18	Printing and reproduction of recorded media	153	174	169	194	165	195
19	Manufacture of coke and refined petroleum products	1	1	-	1	-	1
20	Manufacture of chemicals and chemical products	55	57	56	58	55	58
21	Manufacture of basic pharmaceutical products and pharmaceutical preparations	42	53	52	58	47	51
22	Manufacture of rubber and plastic products	128	135	132	127	130	130
23	Manufacture of other non-metallic mineral products	141	150	136	163	140	159
24	Manufacture of basic metals	51	51	47	61	45	64
25	Manufacture of fabricated metal products, except machinery and equipment	239	249	245	243	255	250
26	Manufacture of computer, electronic and optical products	85	85	81	89	83	93
27	Manufacture of electrical equipment	80	96	89	106	95	106
28	Manufacture of machinery and equipment n.e.c.	43	47	48	52	39	47
29	Manufacture of motor vehicles, trailers and semi-trailers	97	107	107	119	106	113
30	Manufacture of other transport equipment	42	54	49	65	38	48
31	Manufacture of furniture	323	323	330	319	324	313
32	Other manufacturing	211	233	227	231	231	235
33	Repair and installation of machinery and equipment	182	193	197	201	188	200
<b>35</b>	<b>Electricity, gas, steam and air conditioning supply</b>	<b>10</b>	<b>11</b>	<b>7</b>	<b>10</b>	<b>5</b>	<b>13</b>
<b>36-39</b>	<b>Water supply; sewerage, waste management and remediation activities</b>	<b>194</b>	<b>200</b>	<b>192</b>	<b>164</b>	<b>196</b>	<b>166</b>
36	Water collection, treatment and supply	50	56	53	33	54	33
37	Sewerage	4	4	3	4	3	4
38	Waste collection, treatment and disposal activities; materials recovery	133	131	129	120	133	122
39	Remediation activities and other waste management services	7	9	7	7	6	7

... Table 3. Part-time employment classified by period and economic activity

NACE division	Economic activity	Average 2016	Average 2017 (Revised)	March 2017 (Revised)	March 2018	April 2017 (Revised)	April 2018
<b>41-43</b>	<b>Construction</b>	<b>1,635</b>	<b>1,807</b>	<b>1,763</b>	<b>1,850</b>	<b>1,794</b>	<b>1,873</b>
41	Construction of buildings	467	527	510	519	512	512
42	Civil engineering	74	93	95	98	92	100
43	Specialised construction activities	1,094	1,187	1,158	1,233	1,190	1,261
<b>45-47</b>	<b>Wholesale and retail trade; repair of motor vehicles and motorcycles</b>	<b>10,363</b>	<b>10,825</b>	<b>10,464</b>	<b>10,922</b>	<b>10,512</b>	<b>10,963</b>
45	Wholesale and retail trade and repair of motor vehicles and motorcycles	653	681	666	698	680	703
46	Wholesale trade, except of motor vehicles and motorcycles	2,511	2,651	2,567	2,678	2,571	2,652
47	Retail trade, except of motor vehicles and motorcycles	7,199	7,493	7,231	7,546	7,261	7,608
<b>49-53</b>	<b>Transportation and storage</b>	<b>2,663</b>	<b>2,988</b>	<b>2,862</b>	<b>3,082</b>	<b>2,918</b>	<b>3,124</b>
49	Land transport and transport via pipelines	1,557	1,787	1,684	1,896	1,707	1,987
50	Water transport	133	139	124	141	132	154
51	Air transport	408	460	492	492	523	446
52	Warehousing and support activities for transportation	370	430	372	404	372	383
53	Postal and courier activities	195	172	190	149	184	154
<b>55-56</b>	<b>Accommodation and food service activities</b>	<b>9,751</b>	<b>9,590</b>	<b>9,126</b>	<b>9,452</b>	<b>9,247</b>	<b>9,531</b>
55	Accommodation	3,141	2,942	2,795	2,877	2,849	2,864
56	Food and beverage service activities	6,610	6,648	6,331	6,575	6,398	6,667
<b>58-63</b>	<b>Information and communication</b>	<b>1,353</b>	<b>1,508</b>	<b>1,450</b>	<b>1,630</b>	<b>1,459</b>	<b>1,642</b>
58	Publishing activities	159	191	167	205	169	205
59	Motion picture, video and television programme production, sound recording and music publishing activities	251	251	254	268	255	267
60	Programming and broadcasting activities	178	172	164	175	165	176
61	Telecommunications	210	225	229	226	216	227
62	Computer programming, consultancy and related activities	503	602	573	676	605	697
63	Information service activities	52	67	63	80	49	70
<b>64-66</b>	<b>Financial and insurance activities</b>	<b>1,022</b>	<b>1,104</b>	<b>1,046</b>	<b>1,187</b>	<b>1,068</b>	<b>1,195</b>
64	Financial service activities, except insurance and pension funding	606	639	598	707	613	715
65	Insurance, reinsurance and pension funding, except compulsory social security	175	209	194	218	198	213
66	Activities auxiliary to financial services and insurance activities	241	256	254	262	257	267
<b>68</b>	<b>Real estate activities</b>	<b>516</b>	<b>626</b>	<b>601</b>	<b>696</b>	<b>639</b>	<b>725</b>
<b>69-75</b>	<b>Professional, scientific and technical activities</b>	<b>4,001</b>	<b>4,469</b>	<b>4,255</b>	<b>4,829</b>	<b>4,268</b>	<b>4,923</b>
69	Legal and accounting activities	1,015	1,138	1,064	1,207	1,078	1,240
70	Activities of head offices; management consultancy activities	1,475	1,588	1,518	1,685	1,520	1,756
71	Architectural and engineering activities; technical testing and analysis	600	661	627	704	629	667
72	Scientific research and development	25	38	30	50	34	49
73	Advertising and market research	460	517	499	596	498	594
74	Other professional, scientific and technical activities	400	500	491	558	484	586
75	Veterinary activities	26	27	26	29	25	31

... Table 3. Part-time employment classified by period and economic activity

NACE division	Economic activity	Average 2016	Average 2017 (Revised)	March 2017 (Revised)	March 2018	April 2017 (Revised)	April 2018
<b>77-82</b>	<b>Administrative and support service activities</b>	<b>5,520</b>	<b>5,647</b>	<b>5,561</b>	<b>5,345</b>	<b>5,604</b>	<b>5,301</b>
77	Rental and leasing activities	561	582	558	603	549	593
78	Employment activities	1,204	1,127	1,123	673	1,173	633
79	Travel agency, tour operator and other reservation service and related activities	521	587	597	594	618	627
80	Security and investigation activities	1,273	1,338	1,340	1,326	1,337	1,354
81	Services to buildings and landscape activities	1,144	1,111	1,081	1,144	1,108	1,147
82	Office administrative, office support and other business support activities	817	902	862	1,005	819	947
<b>84</b>	<b>Public administration and defence; compulsory social security</b>	<b>2,784</b>	<b>2,854</b>	<b>2,499</b>	<b>2,581</b>	<b>2,500</b>	<b>2,571</b>
<b>85</b>	<b>Education</b>	<b>5,619</b>	<b>5,781</b>	<b>5,605</b>	<b>5,751</b>	<b>5,630</b>	<b>5,762</b>
<b>86-88</b>	<b>Human health and social work activities</b>	<b>3,165</b>	<b>3,188</b>	<b>3,167</b>	<b>3,244</b>	<b>3,126</b>	<b>3,252</b>
86	Human health activities	1,012	1,101	1,068	1,209	1,065	1,221
87	Residential care activities	1,554	1,469	1,502	1,371	1,466	1,365
88	Social work activities without accommodation	599	618	597	664	595	666
<b>90-93</b>	<b>Arts, entertainment and recreation</b>	<b>2,130</b>	<b>2,429</b>	<b>2,352</b>	<b>2,658</b>	<b>2,366</b>	<b>2,725</b>
90	Creative, arts and entertainment activities	521	663	631	766	656	804
91	Libraries, archives, museums and other cultural activities	116	120	126	117	125	119
92	Gambling and betting activities	486	520	510	526	510	545
93	Sports activities and amusement and recreation activities	1,007	1,126	1,085	1,249	1,075	1,257
<b>94-96</b>	<b>Other service activities</b>	<b>2,235</b>	<b>2,421</b>	<b>2,343</b>	<b>2,525</b>	<b>2,338</b>	<b>2,534</b>
94	Activities of membership organisations	545	567	572	574	559	578
95	Repair of computers and personal and household goods	144	158	154	160	169	175
96	Other personal service activities	1,546	1,696	1,617	1,791	1,610	1,781
<b>97-98</b>	<b>Activities of households as employers; undifferentiated goods- and services-producing activities of households for own use</b>	<b>11</b>	<b>18</b>	<b>24</b>	<b>30</b>	<b>23</b>	<b>30</b>
97 <sup>1</sup>	Activities of households as employers of domestic personnel	10	17	23	29	22	28
98	Undifferentiated goods- and services-producing activities of private households for own use	1	1	1	1	1	2
<b>99</b>	<b>Activities of extraterritorial organisations and bodies</b>	<b>16</b>	<b>16</b>	<b>15</b>	<b>14</b>	<b>15</b>	<b>13</b>
<b>01-99</b>	<b>Total</b>	<b>58,069</b>	<b>60,819</b>	<b>58,573</b>	<b>61,517</b>	<b>58,920</b>	<b>61,877</b>

<sup>1</sup> Refer to methodological note 6

Table 4. Part-time employment classified by period, economic activity, part-time job type and category ...

NACE division	Economic activity	Type of part-time job	Category	Average 2016	Average 2017 (Revised)	March 2017 (Revised)	March 2018	April 2017 (Revised)	April 2018
01-03	Agriculture, forestry and fishing	Part-timers holding a full-time job	Males	1,223	1,294	1,283	1,372	1,277	1,379
			Females	68	80	77	86	76	83
			Malta	999	1,073	1,064	1,139	1,057	1,141
			Gozo	292	301	296	319	296	321
			<b>Total</b>	<b>1,291</b>	<b>1,374</b>	<b>1,360</b>	<b>1,458</b>	<b>1,353</b>	<b>1,462</b>
			<b>Total</b>	<b>1,291</b>	<b>1,374</b>	<b>1,360</b>	<b>1,458</b>	<b>1,353</b>	<b>1,462</b>
		Part-time as a primary job	Males	750	772	754	772	762	769
			Females	164	169	166	175	169	177
			Malta	760	782	767	786	772	782
			Gozo	154	159	153	161	159	164
			<b>Total</b>	<b>914</b>	<b>941</b>	<b>920</b>	<b>947</b>	<b>931</b>	<b>946</b>
			<b>Total</b>	<b>914</b>	<b>941</b>	<b>920</b>	<b>947</b>	<b>931</b>	<b>946</b>
<b>Total</b>	<b>2,205</b>	<b>2,315</b>	<b>2,280</b>	<b>2,405</b>	<b>2,284</b>	<b>2,408</b>			
05-09	Mining and quarrying	Part-timers holding a full-time job	Males	13	15	13	14	12	14
			Females	1	2	2	3	2	3
			Malta	5	11	10	9	9	8
			Gozo	9	6	5	8	5	9
		<b>Total</b>	<b>14</b>	<b>17</b>	<b>15</b>	<b>17</b>	<b>14</b>	<b>17</b>	
		Part-time as a primary job	Males	13	18	17	17	19	17
			Females	4	4	4	4	4	4
			Malta	14	19	18	17	20	17
			Gozo	3	3	3	4	3	4
		<b>Total</b>	<b>17</b>	<b>22</b>	<b>21</b>	<b>21</b>	<b>23</b>	<b>21</b>	
		<b>Total</b>	<b>31</b>	<b>39</b>	<b>36</b>	<b>38</b>	<b>37</b>	<b>38</b>	
		10-33	Manufacturing	Part-timers holding a full-time job	Males	901	987	953	1,041
Females	196				215	212	232	204	237
Malta	982				1,063	1,042	1,122	1,025	1,104
Gozo	115				139	123	151	119	149
<b>Total</b>	<b>1,097</b>			<b>1,202</b>	<b>1,165</b>	<b>1,273</b>	<b>1,144</b>	<b>1,253</b>	
Part-time as a primary job	Males			867	895	887	914	874	905
	Females			881	886	873	917	873	930
	Malta			1,621	1,648	1,629	1,696	1,611	1,699
	Gozo			127	133	131	135	136	136
<b>Total</b>	<b>1,748</b>			<b>1,781</b>	<b>1,760</b>	<b>1,831</b>	<b>1,747</b>	<b>1,835</b>	
<b>Total</b>	<b>2,845</b>			<b>2,983</b>	<b>2,925</b>	<b>3,104</b>	<b>2,891</b>	<b>3,088</b>	
35	Electricity, gas, steam and air conditioning supply			Part-timers holding a full-time job	Males	-	1	-	1
		Females	-		-	-	-	-	-
		Malta	-		1	-	1	-	3
		Gozo	-		-	-	-	-	-
		<b>Total</b>	<b>-</b>	<b>1</b>	<b>-</b>	<b>1</b>	<b>-</b>	<b>3</b>	
		Part-time as a primary job	Males	5	4	4	3	2	4
			Females	5	6	3	6	3	6
			Malta	10	9	6	8	4	9
			Gozo	-	1	1	1	1	1
		<b>Total</b>	<b>10</b>	<b>10</b>	<b>7</b>	<b>9</b>	<b>5</b>	<b>10</b>	
		<b>Total</b>	<b>10</b>	<b>11</b>	<b>7</b>	<b>10</b>	<b>5</b>	<b>13</b>	

... Table 4. Part-time employment classified by period, economic activity, part-time job type and category

NACE division	Economic activity	Type of part-time job	Category	Average 2016	Average 2017 (Revised)	March 2017 (Revised)	March 2018	April 2017 (Revised)	April 2018
36-39	Water supply; sewerage, waste management and remediation activities	Part-timers holding a full-time job	Males	49	53	50	55	51	53
			Females	7	11	9	10	10	12
			Malta	50	57	54	60	56	60
			Gozo	6	7	5	5	5	5
			<b>Total</b>	<b>56</b>	<b>64</b>	<b>59</b>	<b>65</b>	<b>61</b>	<b>65</b>
			<b>Total</b>	<b>56</b>	<b>64</b>	<b>59</b>	<b>65</b>	<b>61</b>	<b>65</b>
		Part-time as a primary job	Males	87	88	91	64	92	67
			Females	51	48	42	35	43	34
			Malta	128	131	127	95	129	97
			Gozo	10	5	6	4	6	4
			<b>Total</b>	<b>138</b>	<b>136</b>	<b>133</b>	<b>99</b>	<b>135</b>	<b>101</b>
			<b>Total</b>	<b>138</b>	<b>136</b>	<b>133</b>	<b>99</b>	<b>135</b>	<b>101</b>
<b>Total</b>				<b>194</b>	<b>200</b>	<b>192</b>	<b>164</b>	<b>196</b>	<b>166</b>
41-43	Construction	Part-timers holding a full-time job	Males	788	892	869	936	890	942
			Females	90	100	95	104	94	105
			Malta	709	800	779	836	797	843
			Gozo	169	192	185	204	187	204
			<b>Total</b>	<b>878</b>	<b>992</b>	<b>964</b>	<b>1,040</b>	<b>984</b>	<b>1,047</b>
			<b>Total</b>	<b>878</b>	<b>992</b>	<b>964</b>	<b>1,040</b>	<b>984</b>	<b>1,047</b>
		Part-time as a primary job	Males	599	647	638	647	649	659
			Females	158	168	161	163	161	167
			Malta	653	711	700	708	708	726
			Gozo	104	104	99	102	102	100
			<b>Total</b>	<b>757</b>	<b>815</b>	<b>799</b>	<b>810</b>	<b>810</b>	<b>826</b>
			<b>Total</b>	<b>757</b>	<b>815</b>	<b>799</b>	<b>810</b>	<b>810</b>	<b>826</b>
<b>Total</b>				<b>1,635</b>	<b>1,807</b>	<b>1,763</b>	<b>1,850</b>	<b>1,794</b>	<b>1,873</b>
45-47	Wholesale and retail trade; repair of motor vehicles and motorcycles	Part-timers holding a full-time job	Males	2,259	2,381	2,319	2,446	2,338	2,448
			Females	1,160	1,350	1,219	1,433	1,242	1,461
			Malta	3,096	3,368	3,195	3,508	3,241	3,528
			Gozo	323	363	343	371	339	381
			<b>Total</b>	<b>3,419</b>	<b>3,731</b>	<b>3,538</b>	<b>3,879</b>	<b>3,580</b>	<b>3,909</b>
			<b>Total</b>	<b>3,419</b>	<b>3,731</b>	<b>3,538</b>	<b>3,879</b>	<b>3,580</b>	<b>3,909</b>
		Part-time as a primary job	Males	2,143	2,213	2,144	2,196	2,160	2,223
			Females	4,801	4,881	4,782	4,847	4,772	4,831
			Malta	6,475	6,606	6,459	6,546	6,470	6,551
			Gozo	469	488	467	497	462	503
			<b>Total</b>	<b>6,944</b>	<b>7,094</b>	<b>6,926</b>	<b>7,043</b>	<b>6,932</b>	<b>7,054</b>
			<b>Total</b>	<b>6,944</b>	<b>7,094</b>	<b>6,926</b>	<b>7,043</b>	<b>6,932</b>	<b>7,054</b>
<b>Total</b>				<b>10,363</b>	<b>10,825</b>	<b>10,464</b>	<b>10,922</b>	<b>10,512</b>	<b>10,963</b>
49-53	Transportation and storage	Part-timers holding a full-time job	Males	1,041	1,217	1,120	1,320	1,152	1,385
			Females	160	204	192	220	205	225
			Malta	1,129	1,338	1,235	1,453	1,276	1,522
			Gozo	72	83	77	87	81	88
			<b>Total</b>	<b>1,201</b>	<b>1,421</b>	<b>1,312</b>	<b>1,540</b>	<b>1,357</b>	<b>1,610</b>
			<b>Total</b>	<b>1,201</b>	<b>1,421</b>	<b>1,312</b>	<b>1,540</b>	<b>1,357</b>	<b>1,610</b>
		Part-time as a primary job	Males	1,009	1,092	1,074	1,100	1,090	1,072
			Females	453	475	476	442	471	442
			Malta	1,386	1,493	1,483	1,469	1,496	1,437
			Gozo	76	74	67	73	65	77
			<b>Total</b>	<b>1,462</b>	<b>1,567</b>	<b>1,550</b>	<b>1,542</b>	<b>1,561</b>	<b>1,514</b>
			<b>Total</b>	<b>1,462</b>	<b>1,567</b>	<b>1,550</b>	<b>1,542</b>	<b>1,561</b>	<b>1,514</b>
<b>Total</b>				<b>2,663</b>	<b>2,988</b>	<b>2,862</b>	<b>3,082</b>	<b>2,918</b>	<b>3,124</b>



... Table 4. Part-time employment classified by period, economic activity, part-time job type and category

NACE division	Economic activity	Type of part-time job	Category	Average 2016	Average 2017 (Revised)	March 2017 (Revised)	March 2018	April 2017 (Revised)	April 2018
55-56	Accommodation and food service activities	Part-timers holding a full-time job	Males	2,339	2,440	2,339	2,494	2,358	2,537
			Females	973	1,055	976	1,126	988	1,136
			Malta	3,049	3,198	3,042	3,311	3,071	3,359
			Gozo	263	297	273	309	275	314
			<b>Total</b>	<b>3,312</b>	<b>3,495</b>	<b>3,315</b>	<b>3,620</b>	<b>3,346</b>	<b>3,673</b>
			<b>Total</b>	<b>3,110</b>	<b>2,949</b>	<b>2,763</b>	<b>2,859</b>	<b>2,825</b>	<b>2,849</b>
		Part-time as a primary job	Males	3,329	3,146	3,048	2,973	3,076	3,009
			Malta	5,994	5,642	5,421	5,373	5,499	5,393
			Gozo	445	453	390	459	402	465
			<b>Total</b>	<b>6,439</b>	<b>6,095</b>	<b>5,811</b>	<b>5,832</b>	<b>5,901</b>	<b>5,858</b>
			<b>Total</b>	<b>9,751</b>	<b>9,590</b>	<b>9,126</b>	<b>9,452</b>	<b>9,247</b>	<b>9,531</b>
			<b>Total</b>						
58-63	Information and communication	Part-timers holding a full-time job	Males	494	568	545	609	562	618
			Females	160	179	166	202	162	201
			Malta	618	693	662	754	677	763
			Gozo	36	54	49	57	47	56
			<b>Total</b>	<b>654</b>	<b>747</b>	<b>711</b>	<b>811</b>	<b>724</b>	<b>819</b>
			<b>Total</b>	<b>382</b>	<b>414</b>	<b>400</b>	<b>449</b>	<b>392</b>	<b>453</b>
		Part-time as a primary job	Males	317	347	339	370	343	370
			Malta	668	727	712	780	705	786
			Gozo	31	34	27	39	30	37
			<b>Total</b>	<b>699</b>	<b>761</b>	<b>739</b>	<b>819</b>	<b>735</b>	<b>823</b>
			<b>Total</b>	<b>1,353</b>	<b>1,508</b>	<b>1,450</b>	<b>1,630</b>	<b>1,459</b>	<b>1,642</b>
			<b>Total</b>						
64-66	Financial and insurance activities	Part-timers holding a full-time job	Males	248	254	259	264	265	264
			Females	118	139	125	152	125	154
			Malta	352	379	371	403	377	405
			Gozo	14	14	13	13	13	13
			<b>Total</b>	<b>366</b>	<b>393</b>	<b>384</b>	<b>416</b>	<b>390</b>	<b>418</b>
			<b>Total</b>	<b>252</b>	<b>261</b>	<b>237</b>	<b>286</b>	<b>240</b>	<b>288</b>
		Part-time as a primary job	Males	404	450	425	485	438	489
			Malta	644	697	649	759	665	764
			Gozo	12	14	13	12	13	13
			<b>Total</b>	<b>656</b>	<b>711</b>	<b>662</b>	<b>771</b>	<b>678</b>	<b>777</b>
			<b>Total</b>	<b>1,022</b>	<b>1,104</b>	<b>1,046</b>	<b>1,187</b>	<b>1,068</b>	<b>1,195</b>
			<b>Total</b>						
68	Real estate activities	Part-timers holding a full-time job	Males	158	201	199	238	204	240
			Females	73	101	94	114	107	127
			Malta	182	248	237	297	251	305
			Gozo	49	54	56	55	60	62
			<b>Total</b>	<b>231</b>	<b>302</b>	<b>293</b>	<b>352</b>	<b>311</b>	<b>367</b>
			<b>Total</b>	<b>108</b>	<b>126</b>	<b>123</b>	<b>127</b>	<b>131</b>	<b>135</b>
		Part-time as a primary job	Males	177	198	185	217	197	223
			Malta	246	284	269	304	281	312
			Gozo	39	40	39	40	47	46
			<b>Total</b>	<b>285</b>	<b>324</b>	<b>308</b>	<b>344</b>	<b>328</b>	<b>358</b>
			<b>Total</b>	<b>516</b>	<b>626</b>	<b>601</b>	<b>696</b>	<b>639</b>	<b>725</b>
			<b>Total</b>						

... Table 4. Part-time employment classified by period, economic activity, part-time job type and category

NACE division	Economic activity	Type of part-time job	Category	Average 2016	Average 2017 (Revised)	March 2017 (Revised)	March 2018	April 2017 (Revised)	April 2018
69-75	Professional, scientific and technical activities	Part-timers holding a full-time job	Males	1,150	1,319	1,266	1,453	1,265	1,472
			Females	654	808	756	901	763	915
			Malta	1,700	2,004	1,899	2,217	1,908	2,244
			Gozo	104	123	123	137	120	143
			<b>Total</b>	<b>1,804</b>	<b>2,127</b>	<b>2,022</b>	<b>2,354</b>	<b>2,028</b>	<b>2,387</b>
			<b>Total</b>	<b>1,804</b>	<b>2,127</b>	<b>2,022</b>	<b>2,354</b>	<b>2,028</b>	<b>2,387</b>
		Part-time as a primary job	Males	978	1,084	1,007	1,150	1,018	1,170
			Females	1,219	1,258	1,226	1,325	1,222	1,366
			Malta	2,118	2,254	2,151	2,372	2,157	2,432
			Gozo	79	88	82	103	83	104
			<b>Total</b>	<b>2,197</b>	<b>2,342</b>	<b>2,233</b>	<b>2,475</b>	<b>2,240</b>	<b>2,536</b>
			<b>Total</b>	<b>2,197</b>	<b>2,342</b>	<b>2,233</b>	<b>2,475</b>	<b>2,240</b>	<b>2,536</b>
<b>Total</b>	<b>4,001</b>	<b>4,469</b>	<b>4,255</b>	<b>4,829</b>	<b>4,268</b>	<b>4,923</b>			
77-82	Administrative and support service activities	Part-timers holding a full-time job	Males	1,832	1,855	1,864	1,669	1,836	1,627
			Females	670	742	715	721	709	688
			Malta	2,393	2,461	2,453	2,236	2,428	2,165
			Gozo	109	136	126	154	117	150
			<b>Total</b>	<b>2,502</b>	<b>2,597</b>	<b>2,579</b>	<b>2,390</b>	<b>2,545</b>	<b>2,315</b>
			<b>Total</b>	<b>2,502</b>	<b>2,597</b>	<b>2,579</b>	<b>2,390</b>	<b>2,545</b>	<b>2,315</b>
		Part-time as a primary job	Males	1,273	1,284	1,251	1,222	1,263	1,208
			Females	1,745	1,766	1,731	1,733	1,796	1,778
			Malta	2,867	2,848	2,797	2,735	2,857	2,764
			Gozo	151	202	185	220	202	222
			<b>Total</b>	<b>3,018</b>	<b>3,050</b>	<b>2,982</b>	<b>2,955</b>	<b>3,059</b>	<b>2,986</b>
			<b>Total</b>	<b>3,018</b>	<b>3,050</b>	<b>2,982</b>	<b>2,955</b>	<b>3,059</b>	<b>2,986</b>
<b>Total</b>	<b>5,520</b>	<b>5,647</b>	<b>5,561</b>	<b>5,345</b>	<b>5,604</b>	<b>5,301</b>			
84	Public administration and defence; compulsory social security	Part-timers holding a full-time job	Males	431	411	405	401	406	398
			Females	532	557	472	506	473	508
			Malta	861	875	790	831	791	830
			Gozo	102	93	87	76	88	76
			<b>Total</b>	<b>963</b>	<b>968</b>	<b>877</b>	<b>907</b>	<b>879</b>	<b>906</b>
			<b>Total</b>	<b>963</b>	<b>968</b>	<b>877</b>	<b>907</b>	<b>879</b>	<b>906</b>
		Part-time as a primary job	Males	501	546	469	510	464	503
			Females	1,320	1,340	1,153	1,164	1,157	1,162
			Malta	1,671	1,731	1,479	1,535	1,475	1,526
			Gozo	150	155	143	139	146	139
			<b>Total</b>	<b>1,821</b>	<b>1,886</b>	<b>1,622</b>	<b>1,674</b>	<b>1,621</b>	<b>1,665</b>
			<b>Total</b>	<b>1,821</b>	<b>1,886</b>	<b>1,622</b>	<b>1,674</b>	<b>1,621</b>	<b>1,665</b>
<b>Total</b>	<b>2,784</b>	<b>2,854</b>	<b>2,499</b>	<b>2,581</b>	<b>2,500</b>	<b>2,571</b>			
85	Education	Part-timers holding a full-time job	Males	1,595	1,636	1,620	1,669	1,623	1,680
			Females	1,450	1,508	1,454	1,530	1,450	1,524
			Malta	2,889	2,972	2,910	3,018	2,907	3,023
			Gozo	156	172	164	181	166	181
			<b>Total</b>	<b>3,045</b>	<b>3,144</b>	<b>3,074</b>	<b>3,199</b>	<b>3,073</b>	<b>3,204</b>
			<b>Total</b>	<b>3,045</b>	<b>3,144</b>	<b>3,074</b>	<b>3,199</b>	<b>3,073</b>	<b>3,204</b>
		Part-time as a primary job	Males	949	990	941	965	959	975
			Females	1,625	1,647	1,590	1,587	1,598	1,583
			Malta	2,460	2,521	2,423	2,442	2,449	2,438
			Gozo	114	116	108	110	108	120
			<b>Total</b>	<b>2,574</b>	<b>2,637</b>	<b>2,531</b>	<b>2,552</b>	<b>2,557</b>	<b>2,558</b>
			<b>Total</b>	<b>2,574</b>	<b>2,637</b>	<b>2,531</b>	<b>2,552</b>	<b>2,557</b>	<b>2,558</b>
<b>Total</b>	<b>5,619</b>	<b>5,781</b>	<b>5,605</b>	<b>5,751</b>	<b>5,630</b>	<b>5,762</b>			

... Table 4. Part-time employment classified by period, economic activity, part-time job type and category

NACE division	Economic activity	Type of part-time job	Category	Average 2016	Average 2017 (Revised)	March 2017 (Revised)	March 2018	April 2017 (Revised)	April 2018
86-88	Human health and social work activities	Part-timers holding a full-time job	Males	427	432	435	446	429	444
			Females	603	649	606	713	594	727
			Malta	958	1,001	967	1,070	954	1,081
			Gozo	72	80	74	89	69	90
			<b>Total</b>	<b>1,030</b>	<b>1,081</b>	<b>1,041</b>	<b>1,159</b>	<b>1,023</b>	<b>1,171</b>
			<b>Total</b>	<b>1,030</b>	<b>1,081</b>	<b>1,041</b>	<b>1,159</b>	<b>1,023</b>	<b>1,171</b>
		Part-time as a primary job	Males	337	339	331	321	331	324
			Females	1,798	1,768	1,795	1,764	1,772	1,757
			Malta	1,982	1,953	1,972	1,938	1,954	1,933
			Gozo	153	154	154	147	149	148
			<b>Total</b>	<b>2,135</b>	<b>2,107</b>	<b>2,126</b>	<b>2,085</b>	<b>2,103</b>	<b>2,081</b>
			<b>Total</b>	<b>2,135</b>	<b>2,107</b>	<b>2,126</b>	<b>2,085</b>	<b>2,103</b>	<b>2,081</b>
<b>Total</b>	<b>3,165</b>	<b>3,188</b>	<b>3,167</b>	<b>3,244</b>	<b>3,126</b>	<b>3,252</b>			
90-93	Arts, entertainment and recreation	Part-timers holding a full-time job	Males	645	745	726	854	740	884
			Females	292	340	317	395	323	416
			Malta	872	999	967	1,140	983	1,189
			Gozo	65	86	76	109	80	111
			<b>Total</b>	<b>937</b>	<b>1,085</b>	<b>1,043</b>	<b>1,249</b>	<b>1,063</b>	<b>1,300</b>
			<b>Total</b>	<b>937</b>	<b>1,085</b>	<b>1,043</b>	<b>1,249</b>	<b>1,063</b>	<b>1,300</b>
		Part-time as a primary job	Males	567	663	649	681	654	681
			Females	626	681	660	728	649	744
			Malta	1,151	1,289	1,257	1,343	1,249	1,356
			Gozo	42	55	52	66	54	69
			<b>Total</b>	<b>1,193</b>	<b>1,344</b>	<b>1,309</b>	<b>1,409</b>	<b>1,303</b>	<b>1,425</b>
			<b>Total</b>	<b>1,193</b>	<b>1,344</b>	<b>1,309</b>	<b>1,409</b>	<b>1,303</b>	<b>1,425</b>
<b>Total</b>	<b>2,130</b>	<b>2,429</b>	<b>2,352</b>	<b>2,658</b>	<b>2,366</b>	<b>2,725</b>			
94-96	Other service activities	Part-timers holding a full-time job	Males	351	394	376	428	387	431
			Females	288	338	309	373	321	391
			Malta	593	685	642	755	659	773
			Gozo	46	47	43	46	49	49
			<b>Total</b>	<b>639</b>	<b>732</b>	<b>685</b>	<b>801</b>	<b>708</b>	<b>822</b>
			<b>Total</b>	<b>639</b>	<b>732</b>	<b>685</b>	<b>801</b>	<b>708</b>	<b>822</b>
		Part-time as a primary job	Males	451	479	465	480	462	476
			Females	1,145	1,210	1,193	1,244	1,168	1,236
			Malta	1,486	1,570	1,539	1,604	1,520	1,599
			Gozo	110	119	119	120	110	113
			<b>Total</b>	<b>1,596</b>	<b>1,689</b>	<b>1,658</b>	<b>1,724</b>	<b>1,630</b>	<b>1,712</b>
			<b>Total</b>	<b>1,596</b>	<b>1,689</b>	<b>1,658</b>	<b>1,724</b>	<b>1,630</b>	<b>1,712</b>
<b>Total</b>	<b>2,235</b>	<b>2,421</b>	<b>2,343</b>	<b>2,525</b>	<b>2,338</b>	<b>2,534</b>			
97-98 <sup>1</sup>	Activities of households as employers; undifferentiated goods- and services-producing activities of households for own use	Part-timers holding a full-time job	Males	2	3	5	6	5	6
			Females	1	3	2	4	2	4
			Malta	3	6	7	10	7	10
			Gozo	-	-	-	-	-	-
			<b>Total</b>	<b>3</b>	<b>6</b>	<b>7</b>	<b>10</b>	<b>7</b>	<b>10</b>
			<b>Total</b>	<b>3</b>	<b>6</b>	<b>7</b>	<b>10</b>	<b>7</b>	<b>10</b>
		Part-time as a primary job	Males	2	3	4	5	4	5
			Females	6	9	13	15	12	15
			Malta	8	11	15	19	15	19
			Gozo	-	1	2	1	1	1
			<b>Total</b>	<b>8</b>	<b>12</b>	<b>17</b>	<b>20</b>	<b>16</b>	<b>20</b>
			<b>Total</b>	<b>8</b>	<b>12</b>	<b>17</b>	<b>20</b>	<b>16</b>	<b>20</b>
<b>Total</b>	<b>11</b>	<b>18</b>	<b>24</b>	<b>30</b>	<b>23</b>	<b>30</b>			

... Table 4. Part-time employment classified by period, economic activity, part-time job type and category

NACE division	Economic activity	Type of part-time job	Category	Average 2016	Average 2017 (Revised)	March 2017 (Revised)	March 2018	April 2017 (Revised)	April 2018
99	Activities of extraterritorial organisations and bodies	Part-timers holding a full-time job	Males	1	1	1	1	1	1
			Females	-	-	-	-	-	-
			Malta	1	1	1	1	1	1
			Gozo	-	-	-	-	-	-
			<b>Total</b>	<b>1</b>	<b>1</b>	<b>1</b>	<b>1</b>	<b>1</b>	<b>1</b>
			<b>Total</b>	<b>1</b>	<b>1</b>	<b>1</b>	<b>1</b>	<b>1</b>	<b>1</b>
		Part-time as a primary job	Males	1	1	1	1	1	-
			Females	14	14	13	12	13	12
			Malta	15	15	14	13	14	12
			Gozo	-	-	-	-	-	-
			<b>Total</b>	<b>15</b>	<b>15</b>	<b>14</b>	<b>13</b>	<b>14</b>	<b>12</b>
			<b>Total</b>	<b>15</b>	<b>15</b>	<b>14</b>	<b>13</b>	<b>14</b>	<b>12</b>
<b>Total</b>	<b>16</b>	<b>16</b>	<b>15</b>	<b>14</b>	<b>15</b>	<b>13</b>			
01-99	Total	Part-timers holding a full-time job	Males	15,947	17,099	16,647	17,717	16,741	17,842
			Females	7,496	8,381	7,798	8,825	7,850	8,917
			Malta	21,441	23,233	22,327	24,171	22,475	24,357
			Gozo	2,002	2,247	2,118	2,371	2,116	2,402
			<b>Total</b>	<b>23,443</b>	<b>25,480</b>	<b>24,445</b>	<b>26,542</b>	<b>24,591</b>	<b>26,759</b>
			<b>Total</b>	<b>23,443</b>	<b>25,480</b>	<b>24,445</b>	<b>26,542</b>	<b>24,591</b>	<b>26,759</b>
		Part-time as a primary job	Males	14,384	14,868	14,250	14,769	14,392	14,783
			Females	20,242	20,471	19,878	20,206	19,937	20,335
			Malta	32,357	32,941	31,887	32,542	32,050	32,652
			Gozo	2,269	2,398	2,241	2,433	2,279	2,466
			<b>Total</b>	<b>34,626</b>	<b>35,339</b>	<b>34,128</b>	<b>34,975</b>	<b>34,329</b>	<b>35,118</b>
			<b>Total</b>	<b>34,626</b>	<b>35,339</b>	<b>34,128</b>	<b>34,975</b>	<b>34,329</b>	<b>35,118</b>
<b>Total part-timers</b>	<b>58,069</b>	<b>60,819</b>	<b>58,573</b>	<b>61,517</b>	<b>58,920</b>	<b>61,877</b>			

<sup>1</sup> Refer to methodological note 6

## Methodological Notes

1. The data provided in this release, including the relevant classifications, are based on administrative records held at the JobsPlus. The information contained in this release may be subject to revision. Monthly data are revised in the subsequent year.
2. The National Statistics Office publishes, on a quarterly basis, another set of statistics on employment and unemployment based on the Labour Force Survey (LFS). When compiling LFS statistics, the NSO adopts the International Labour Organisation (ILO) definition, an internationally agreed definition on employment and unemployment. This definition has also been adopted by Eurostat and is used by all EU Member States. More details regarding the methodology used for the compilation of employment and unemployment statistics from the LFS may be found in quarterly LFS news releases.

Since JobsPlus records and LFS results measure two different facets of employment and unemployment, these are not comparable. Users are therefore cautioned that these two sets of statistics should not be used interchangeably.

3. Full-time and part-time status is determined by the employer's declaration (or that made by a self-employed person) in the engagement form which is required to be sent to JobsPlus upon commencement of employment.
4. Apprentices are included under their respective economic activity.

### 5. Definitions:

- **Labour Supply:** Full-time gainfully occupied population and the registered unemployed population.
  - **Apprentices, trainees and students:** Includes apprentices, trainees, Junior College and University students in the summer work-phase, undergraduate trainees, and trainees with fixed contracts.
  - **Regional employment:** Data on Malta/Gozo employment differs on the basis of economic sector. Accordingly, the data on private sector employment depends on employee residence, whereas data for public sector depends on employer information on the location of its employees.
  - **Full-time equivalent (FTE):** Employment in full-time equivalent is a conversion method used to measure the number of employees according to the number of hours worked. When using FTE a full-time employee working a 40 hour week is equivalent to 1.0, whereas a person who works 20 hours per week is equivalent to 0.5. Table 2 of this release includes persons who work full-time, persons on a full-time with reduced hours basis and full-time employees who are on unpaid leave. When converting these figures into FTE, full-time employees are considered as 1 whereas persons working full-time with reduced hours or who are on unpaid leave are considered according to the hours worked. FTE data is currently available in respect of public sector employment and is based on the administrative records of the People and Standards Division within the Office of the Prime Minister. FTE information for the private sector is not available.
  - **Part 1 of the unemployment register:** Persons registering under Part 1 are either new job seekers who have left school, re-entrants into the labour market, or individuals who have been made redundant by their former employer.
  - **Part 2 of the unemployment register:** Persons registering under Part 2 are either workers who have been dismissed from work due to disciplinary action, left work out of their own free will, refused work or training opportunities or were struck off the register after an inspection by Law Enforcement personnel.
6. Owing to a reclassification exercise carried out by JobsPlus, employers recruiting domestic workers for personal services, (not as a commercial activity), have been transferred from NACE divisions 86 and 88 to NACE division 97. Within the latter division, a household employer is defined as a person who pays an individual to perform caring duties in or around his home. Household employees may include nannies, care workers and private nurses. This change came into effect as from December 2017 and as such, affected also the average for that year.

7. More information relating to this news release may be accessed at:

Statistical concept: <http://nso.gov.mt/metadata/concepts.aspx>

Classifications: <http://nso.gov.mt/metadata/classificationdetails.aspx?id=NACE Rev. 2>

8. References to this news release are to be cited appropriately.

9. A detailed news release calendar is available on:

[https://nso.gov.mt/en/News\\_Releases/Release\\_Calendar/Pages/News-Release-Calendar.aspx](https://nso.gov.mt/en/News_Releases/Release_Calendar/Pages/News-Release-Calendar.aspx)