

7 August 2020 | 1100 hrs | 130/2020

During the second quarter of 2020, despite sharp drops in road traffic accidents and traffic casualties, there were five road traffic fatalities.

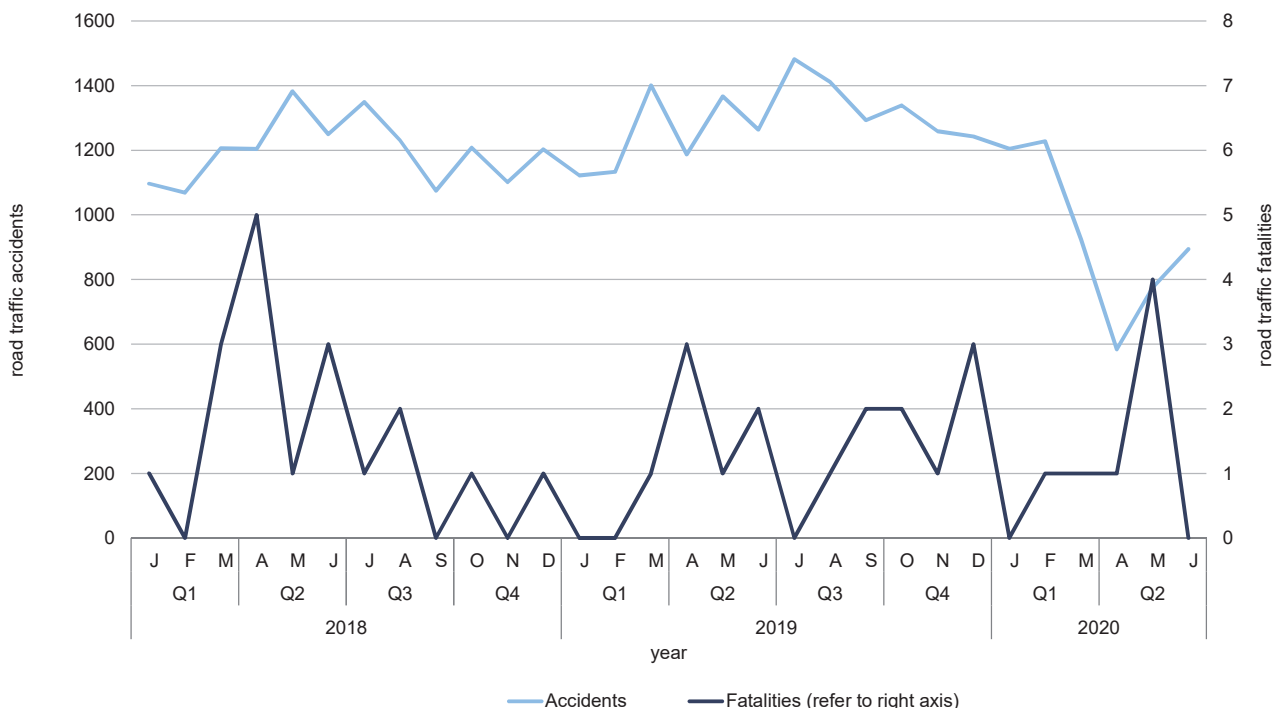
## Road Traffic Accidents: Q2/2020

The number of reported traffic accidents in the second quarter this year reached 2,255, down by 40.9 per cent over the same period in 2019. The Northern Harbour district registered the most accidents with 739 cases or 32.8 per cent of all accidents (Table 1).

Road traffic casualties decreased by 46.6 per cent to 225 over the same period in 2019. Grievously injured persons amounted to 49, and consisted of 27 drivers, 5 passengers and 17 pedestrians/cyclists. The injuries suffered by four drivers and one passenger proved fatal. During this quarter, one less fatality occurred when compared to the same period in 2019 (Table 4).

The majority of those grievously injured were males (79.6 per cent), accompanied with three male fatalities. The majority of casualties involved persons in the 26 to 40 age-bracket (Table 5).

**Chart 1. Road traffic accidents by month**



Statistics in this News Release should be interpreted in the context of the COVID-19 situation.

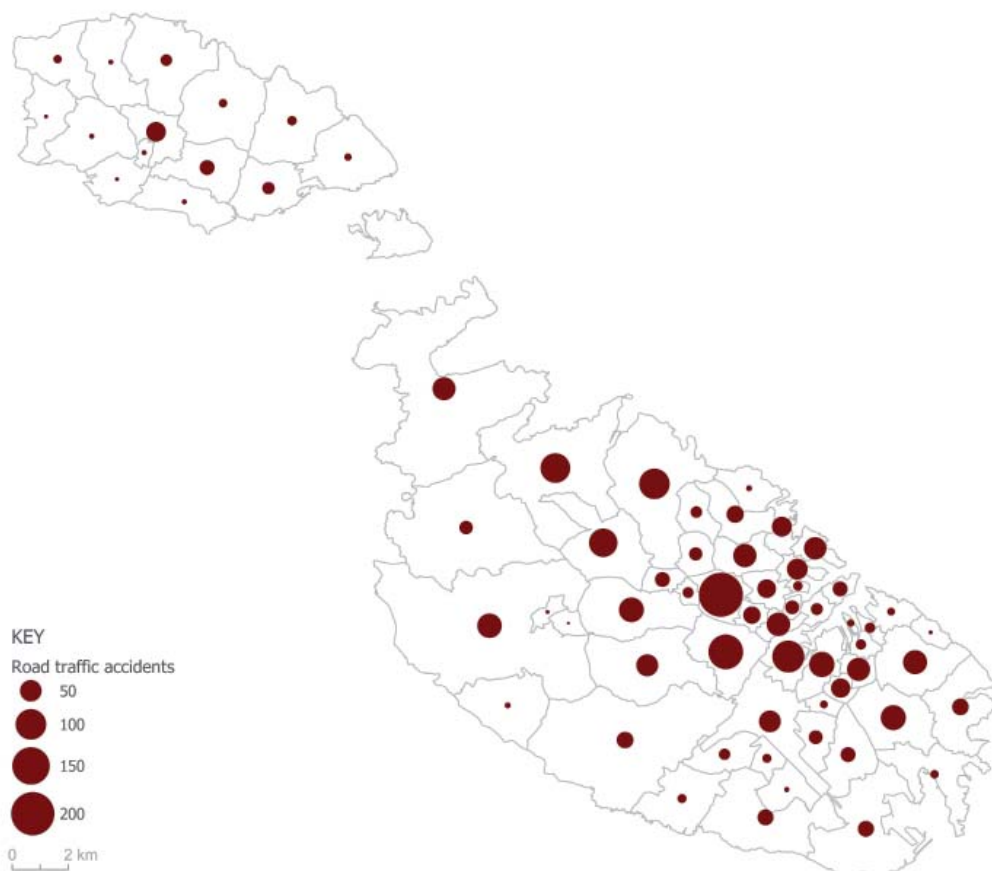
The largest number of road traffic casualties (51.1 per cent) involved passenger cars, followed by motorcycles (36.0 per cent) and goods-carrying vehicles (8.9 per cent). The five fatalities comprised of three motorcycle drivers, a quad and ATV driver, and a motorcycle passenger. Cyclists hit in traffic accidents amounted to 17, of which eight suffered grievous injuries (Table 6). Road traffic casualties caused by accidents between vehicles topped the list with 66.2 per cent of all road traffic casualties (Table 7).

The highest number of road traffic casualties occurred on Thursdays and Tuesdays with 42 and 36 casualties respectively, while the highest number of road traffic accidents occurred on Fridays with 370 cases or 16.4 per cent of the total (Table 8). The time bracket during which most road traffic accidents occurred was between 09:00 and 11:59 with 525 cases or 23.3 per cent of the total, followed by the 15:00-17:59 time bracket with 502 cases. The least number of accidents occurring daily took place between 03:00 and 05:59 with 26 cases (Table 9).

Highest incidence of road traffic accidents was registered in Birkirkara with 209 case, followed by Ħal Qormi and Il-Marsa, with 129 and 110 reported accidents respectively (Table 10, Map 1 and Chart 5).

Six out of ten localities that registered the lowest number of road traffic accidents are located in the Gozo and Comino district. Only one road traffic accident was recorded in the locality of L-Imdina. Ix-Xghajra, L-Imtarfa, Il-Munxar and San Lawrenz registered two road traffic accidents each (Map 1 and Table 10).

**Map 1. Road traffic accidents by locality: April-June 2020**



All districts recorded a decrease in road traffic accidents when compared to the second quarter of the previous year. The Northern Harbour district registered the highest percentage decrease in road traffic accidents of 47.4 per cent when compared to same quarter in 2019, followed by the Northern district (Table 1, Map 2).

**Map 2. Net increase/decrease in road traffic accidents by district: April-June 2019/2020**

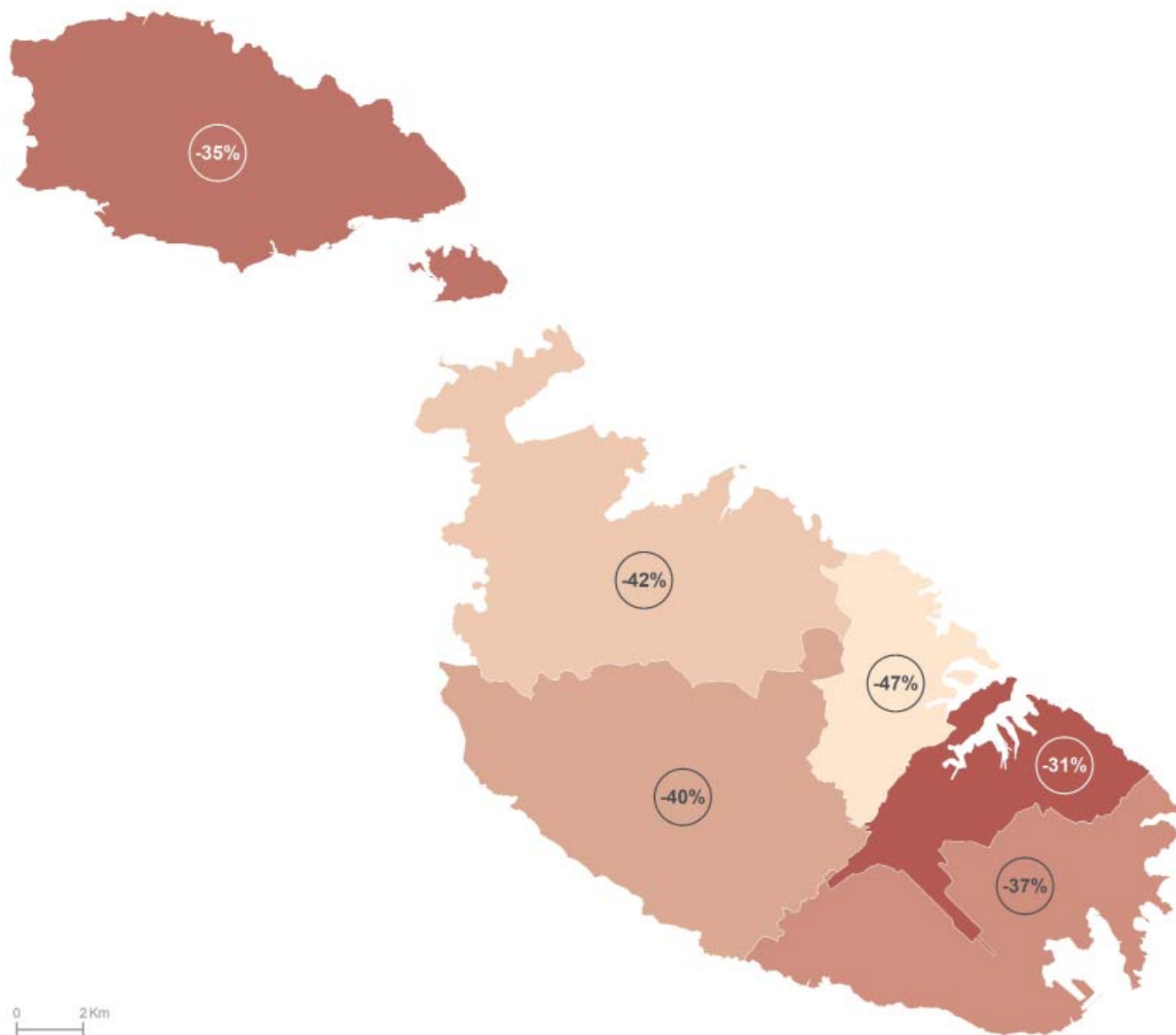


Table 1. Total road traffic accidents by region/district

Region/District	January-June		April-June			
	2019	2020	2019	2020	Change	Percentage change
<b>MALTA</b>	<b>7,474</b>	<b>5,612</b>	<b>3,818</b>	<b>2,255</b>	<b>-1,563</b>	<b>-40.9</b>
<b>Malta</b>	<b>7,052</b>	<b>5,293</b>	<b>3,593</b>	<b>2,109</b>	<b>-1,484</b>	<b>-41.3</b>
Southern Harbour	1,382	1,216	696	477	-219	-31.5
Northern Harbour	2,780	1,908	1,405	739	-666	-47.4
South Eastern	719	598	382	242	-140	-36.6
Western	912	607	462	276	-186	-40.3
Northern	1,259	964	648	375	-273	-42.1
<b>Gozo and Comino</b>	<b>422</b>	<b>319</b>	<b>225</b>	<b>146</b>	<b>-79</b>	<b>-35.1</b>

Table 2. Non-injury road traffic accidents by region/district

Region/District	January-June		April-June			
	2019	2020	2019	2020	Change	Percentage change
<b>MALTA</b>	<b>6,827</b>	<b>5,145</b>	<b>3,477</b>	<b>2,049</b>	<b>-1,428</b>	<b>-41.1</b>
<b>Malta</b>	<b>6,470</b>	<b>4,858</b>	<b>3,288</b>	<b>1,918</b>	<b>-1,370</b>	<b>-41.7</b>
Southern Harbour	1,258	1,116	635	433	-202	-31.8
Northern Harbour	2,565	1,763	1,281	678	-603	-47.1
South Eastern	638	543	341	219	-122	-35.8
Western	850	563	432	255	-177	-41.0
Northern	1,159	873	599	333	-266	-44.4
<b>Gozo and Comino</b>	<b>357</b>	<b>287</b>	<b>189</b>	<b>131</b>	<b>-58</b>	<b>-30.7</b>

Table 3. Injury road traffic accidents by region/district

Region/District	January-June		April-June			
	2019	2020	2019	2020	Change	Percentage change
<b>MALTA</b>	<b>647</b>	<b>467</b>	<b>341</b>	<b>206</b>	<b>-135</b>	<b>-39.6</b>
<b>Malta</b>	<b>582</b>	<b>435</b>	<b>305</b>	<b>191</b>	<b>-114</b>	<b>-37.4</b>
Southern Harbour	124	100	61	44	-17	-27.9
Northern Harbour	215	145	124	61	-63	-50.8
South Eastern	81	55	41	23	-18	-43.9
Western	62	44	30	21	-9	-30.0
Northern	100	91	49	42	-7	-14.3
<b>Gozo and Comino</b>	<b>65</b>	<b>32</b>	<b>36</b>	<b>15</b>	<b>-21</b>	<b>-58.3</b>

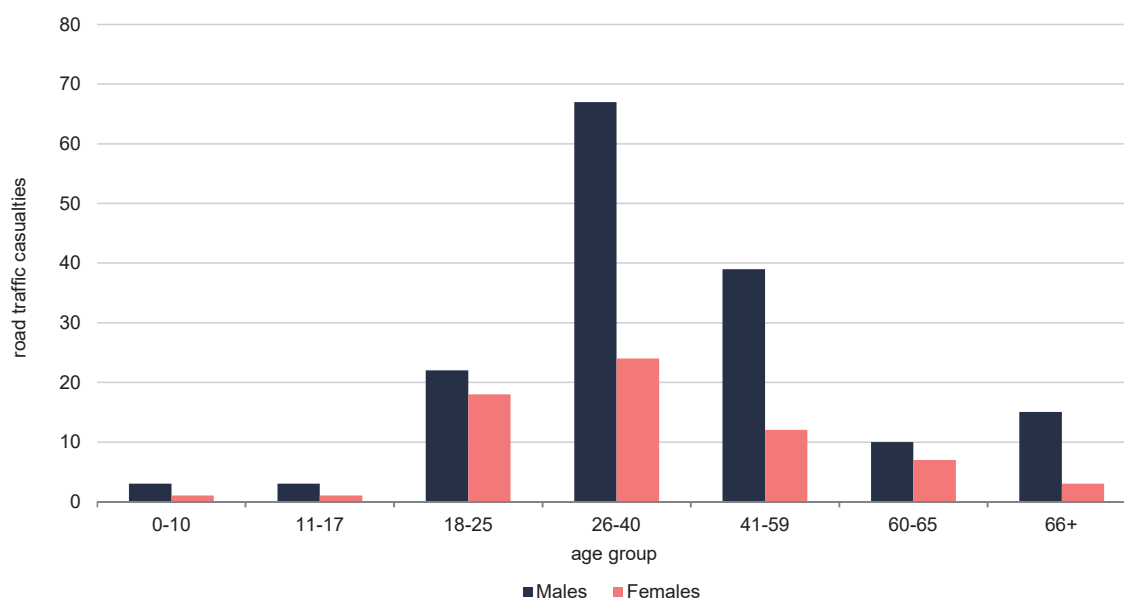
Table 4. Road traffic casualties by road traffic unit, region/district and injury type: April-June 2020

Region/District	2019					2020				
	Fatal	Grievous	Slight	Insignificant	Total	Fatal	Grievous	Slight	Insignificant	Total
<b>DRIVERS</b>										
<b>MALTA</b>	<b>3</b>	<b>50</b>	<b>198</b>	<b>6</b>	<b>257</b>	<b>4</b>	<b>27</b>	<b>113</b>	<b>11</b>	<b>155</b>
<b>Malta</b>	<b>3</b>	<b>44</b>	<b>181</b>	<b>6</b>	<b>234</b>	<b>4</b>	<b>25</b>	<b>105</b>	<b>10</b>	<b>144</b>
Southern Harbour	-	8	46	2	56	1	1	34	1	37
Northern Harbour	1	16	63	2	82	2	8	26	3	39
South Eastern	-	5	34	-	39	-	3	14	1	18
Western	-	6	15	1	22	-	4	12	1	17
Northern	2	9	23	1	35	1	9	19	4	33
<b>Gozo and Comino</b>	<b>-</b>	<b>6</b>	<b>17</b>	<b>-</b>	<b>23</b>	<b>-</b>	<b>2</b>	<b>8</b>	<b>1</b>	<b>11</b>
<b>PASSENGERS</b>										
<b>MALTA</b>	<b>3</b>	<b>13</b>	<b>75</b>	<b>10</b>	<b>101</b>	<b>1</b>	<b>5</b>	<b>21</b>	<b>4</b>	<b>31</b>
<b>Malta</b>	<b>3</b>	<b>12</b>	<b>64</b>	<b>7</b>	<b>86</b>	<b>1</b>	<b>3</b>	<b>18</b>	<b>4</b>	<b>26</b>
Southern Harbour	1	-	7	2	10	-	1	1	-	2
Northern Harbour	-	3	16	3	22	-	2	10	3	15
South Eastern	-	3	16	1	20	-	-	-	-	0
Western	-	-	7	-	7	1	-	2	-	3
Northern	2	6	18	1	27	-	-	5	1	6
<b>Gozo and Comino</b>	<b>-</b>	<b>1</b>	<b>11</b>	<b>3</b>	<b>15</b>	<b>-</b>	<b>2</b>	<b>3</b>	<b>-</b>	<b>5</b>
<b>PEDESTRIANS/CYCLISTS</b>										
<b>MALTA</b>	<b>-</b>	<b>22</b>	<b>35</b>	<b>6</b>	<b>63</b>	<b>-</b>	<b>17</b>	<b>21</b>	<b>1</b>	<b>39</b>
<b>Malta</b>	<b>-</b>	<b>21</b>	<b>29</b>	<b>6</b>	<b>56</b>	<b>-</b>	<b>16</b>	<b>20</b>	<b>1</b>	<b>37</b>
Southern Harbour	-	6	-	-	6	-	4	3	1	8
Northern Harbour	-	12	21	2	35	-	4	8	-	12
South Eastern	-	1	-	2	3	-	3	4	-	7
Western	-	-	6	-	6	-	1	2	-	3
Northern	-	2	2	2	6	-	4	3	-	7
<b>Gozo and Comino</b>	<b>-</b>	<b>1</b>	<b>6</b>	<b>-</b>	<b>7</b>	<b>-</b>	<b>1</b>	<b>1</b>	<b>-</b>	<b>2</b>
...of which cyclists (MALTA)	-	3	2	-	5	-	8	9	-	17
<b>TOTAL</b>										
<b>MALTA</b>	<b>6</b>	<b>85</b>	<b>308</b>	<b>22</b>	<b>421</b>	<b>5</b>	<b>49</b>	<b>155</b>	<b>16</b>	<b>225</b>
<b>Malta</b>	<b>6</b>	<b>77</b>	<b>274</b>	<b>19</b>	<b>376</b>	<b>5</b>	<b>44</b>	<b>143</b>	<b>15</b>	<b>207</b>
Southern Harbour	1	14	53	4	72	1	6	38	2	47
Northern Harbour	1	31	100	7	139	2	14	44	6	66
South Eastern	-	9	50	3	62	-	6	18	1	25
Western	-	6	28	1	35	1	5	16	1	23
Northern	4	17	43	4	68	1	13	27	5	46
<b>Gozo and Comino</b>	<b>-</b>	<b>8</b>	<b>34</b>	<b>3</b>	<b>45</b>	<b>-</b>	<b>5</b>	<b>12</b>	<b>1</b>	<b>18</b>

Table 5. Road traffic casualties by type of injury, age group and sex: April-June 2020

Age group	2019	2020				
	Total	Fatal	Grievous	Slight	Insignificant	Total
<b>Males</b>						
0-10	9	-	1	2	-	3
11-17	7	-	1	2	-	3
18-25	48	-	6	16	-	22
26-40	65	2	22	38	4	66
41-59	78	1	4	27	7	39
60-65	13	-	3	7	-	10
66+	23	-	2	11	2	15
unknown	-	-	-	1	-	1
<b>Total</b>	<b>243</b>	<b>3</b>	<b>39</b>	<b>104</b>	<b>13</b>	<b>159</b>
<b>Females</b>						
0-10	16	-	-	1	-	1
11-17	10	-	1	-	-	1
18-25	34	1	1	15	1	18
26-40	41	1	2	20	1	24
41-59	46	-	2	9	1	12
60-65	6	-	2	5	-	7
66+	25	-	2	1	-	3
<b>Total</b>	<b>178</b>	<b>2</b>	<b>10</b>	<b>51</b>	<b>3</b>	<b>66</b>
<b>Total</b>						
<b>0-10</b>	<b>25</b>	<b>-</b>	<b>1</b>	<b>3</b>	<b>-</b>	<b>4</b>
<b>11-17</b>	<b>17</b>	<b>-</b>	<b>2</b>	<b>2</b>	<b>-</b>	<b>4</b>
<b>18-25</b>	<b>82</b>	<b>1</b>	<b>7</b>	<b>31</b>	<b>1</b>	<b>40</b>
<b>26-40</b>	<b>106</b>	<b>3</b>	<b>24</b>	<b>58</b>	<b>5</b>	<b>90</b>
<b>41-59</b>	<b>124</b>	<b>1</b>	<b>6</b>	<b>36</b>	<b>8</b>	<b>51</b>
<b>60-65</b>	<b>19</b>	<b>-</b>	<b>5</b>	<b>12</b>	<b>-</b>	<b>17</b>
<b>66+</b>	<b>48</b>	<b>-</b>	<b>4</b>	<b>12</b>	<b>2</b>	<b>18</b>
<b>unknown</b>	<b>-</b>	<b>-</b>	<b>-</b>	<b>1</b>	<b>-</b>	<b>1</b>
<b>Total</b>	<b>421</b>	<b>5</b>	<b>49</b>	<b>155</b>	<b>16</b>	<b>225</b>

Chart 2. Road traffic casualties by gender and age group: April-June 2020



**Table 6. Road traffic casualties by road traffic unit, vehicle type and injury: April-June 2020**

Road traffic unit	Vehicle type	2020				
		Fatal	Grievous	Slight	Insignificant	Total
Driver	Motorcycle	3	16	50	5	74
	Quad & ATV	1	-	-	-	1
	Passenger car	-	8	53	5	66
	Road Tractor	-	-	1	-	1
	Goods-carrying vehicle	-	3	9	1	13
Passenger	Motorcycle	1	1	4	-	6
	Passenger car	-	4	16	3	23
	Goods-carrying vehicle	-	-	1	1	2
Pedestrian	Motorcycle	-	-	1	-	1
	Passenger car	-	4	8	1	13
	Goods-carrying vehicle	-	2	1	-	3
	Special Purpose vehicle	-	1	1	-	2
	Unknown vehicle	-	2	1	-	3
Cyclists	Passenger car	-	7	6	-	13
	Quad & ATV	-	-	1	-	1
	Goods-carrying vehicle	-	1	1	-	2
	Unknown vehicle	-	-	1	-	1
<b>Total</b>		<b>5</b>	<b>49</b>	<b>155</b>	<b>16</b>	<b>225</b>

**Table 7. Road traffic casualties by road traffic unit, type of accident and injury: April-June 2020**

Road traffic unit	Accident type	2020				
		Fatal	Grievous	Slight	Insignificant	Total
Driver	Vehicle hit and run	-	1	2	-	3
	Vehicle with vehicle	2	18	95	8	123
	Vehicle with pedestrian	-	-	1	-	1
	Vehicle with property	2	7	15	3	27
	Vehicle with bicycle	-	1	-	-	1
Passenger	Vehicle with vehicle	1	2	18	4	25
	Vehicle with property	-	3	3	-	6
Pedestrian	Vehicle hit and run	-	1	-	-	1
	Vehicle with vehicle	-	-	1	-	1
	Vehicle with pedestrian	-	8	11	1	20
Cyclist	Vehicle with bicycle	-	8	9	-	17
<b>Total</b>		<b>5</b>	<b>49</b>	<b>155</b>	<b>16</b>	<b>225</b>

Table 8. Road traffic casualties and accidents by day of the week: April-June 2020

	Monday	Tuesday	Wednesday	Thursday	Friday	Saturday	Sunday	Total
Traffic casualties	31	36	29	42	29	34	24	225
Traffic accidents	343	352	343	327	370	321	199	2,255
Casualties-to-accidents ratio (%)	9.0	10.2	8.5	12.8	7.8	10.6	12.1	10.0

Chart 3. Percentage distribution of road traffic casualties by day of the week: April-June 2020

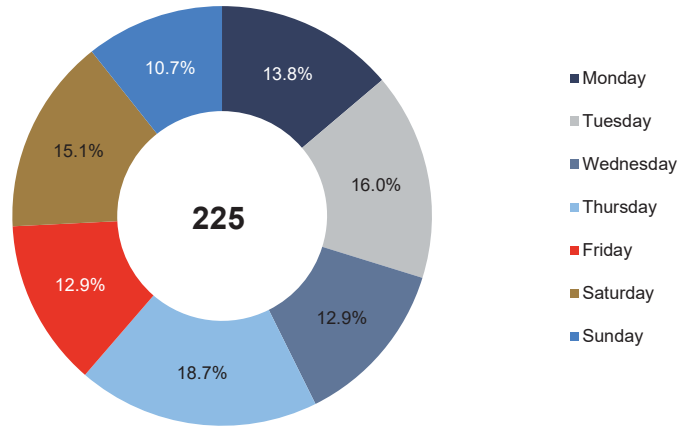


Table 9. Road traffic accidents by day of the week and time bracket: April-June 2020

Time bracket	Monday	Tuesday	Wednesday	Thursday	Friday	Saturday	Sunday	Total
00:00 - 02:59	4	3	2	4	0	5	12	30
03:00 - 05:59	2	4	3	2	5	4	6	26
06:00 - 08:59	41	56	49	40	47	45	9	287
09:00 - 11:59	87	70	71	78	94	87	38	525
12:00 - 14:59	72	64	77	63	85	66	42	469
15:00 - 17:59	86	90	78	83	69	59	37	502
18:00 - 20:59	38	48	51	43	52	39	40	311
21:00 - 23:59	13	17	12	14	18	16	15	105
<b>Total</b>	<b>343</b>	<b>352</b>	<b>343</b>	<b>327</b>	<b>370</b>	<b>321</b>	<b>199</b>	<b>2255</b>

Chart 4. Road traffic accidents by day of the week and time of day: April-June 2020

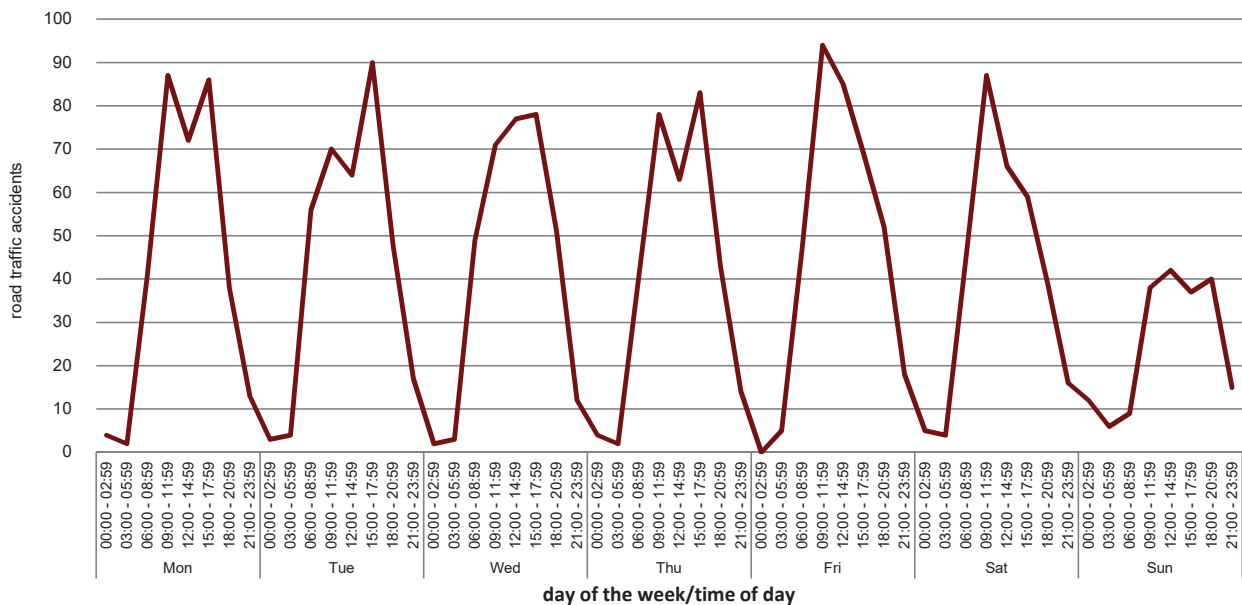




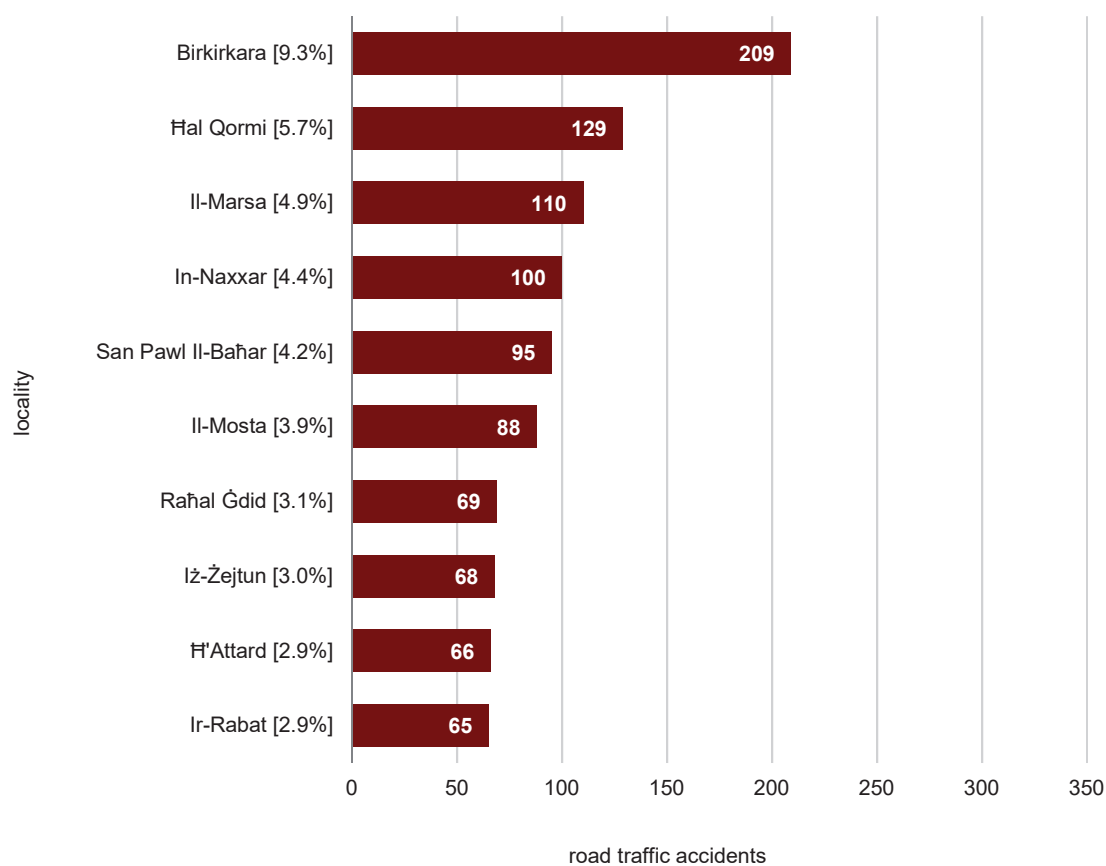
Table 10. Road traffic accidents by district/locality ...

District/Locality	January-June		April-June		Change
	2019	2020	2019	2020	
<b>Southern Harbour</b>	<b>1,382</b>	<b>1,175</b>	<b>696</b>	<b>477</b>	<b>-219</b>
Bormla	43	34	25	12	-13
Il-Fgura	125	122	47	58	11
Floriana	91	55	43	16	-27
Ħal Luqa	200	153	100	51	-49
Ħal Tarxien	138	105	75	40	-35
Ħaż-Żabbar	151	134	70	63	-7
Il-Kalkara	27	18	17	7	-10
Il-Marsa	240	242	128	110	-18
Raĥal Ġdid	216	175	106	69	-37
Santa Luċija	15	29	7	7	-
L-Isla	12	13	8	6	-2
Valletta	85	58	47	24	-23
Il-Birgu	26	28	16	12	-4
Ix-Xghajra	13	9	7	2	-5
<b>Northern Harbour</b>	<b>2,780</b>	<b>1,909</b>	<b>1,405</b>	<b>739</b>	<b>-666</b>
Birkirkara	632	486	312	209	-103
Il-Gżira	172	124	93	47	-46
Ħal Qormi	425	309	215	129	-86
Il-Ħamrun	188	146	91	60	-31
L-Imsida	243	128	122	38	-84
Pembroke	71	30	33	4	-29
San Ġwann	251	171	105	59	-46
Santa Venera	150	96	66	33	-33
San Ġiljan	190	124	99	43	-56
Is-Swieqi	133	69	81	32	-49
Ta' Xbiex	40	22	25	10	-15
Tal-Pietà	84	64	43	21	-22
Tas-Sliema	201	140	120	54	-66
<b>South Eastern</b>	<b>719</b>	<b>598</b>	<b>382</b>	<b>242</b>	<b>-140</b>
Birżebbuġa	112	82	63	28	-35
Il-Gudja	83	69	47	21	-26
Ħal Ġhaxaq	42	51	19	24	5
Ħal Kirkop	25	21	12	9	-3
Ħal Safi	18	10	11	3	-8
Marsaskala	94	77	51	30	-21
Marsaxlokk	33	18	18	8	-10
L-Imqabba	24	27	10	14	4
Il-Qrendi	22	24	13	9	-4
Iż-Żejtun	184	153	97	68	-29
Iż-Żurrieq	82	66	41	28	-13
<b>Western</b>	<b>912</b>	<b>646</b>	<b>462</b>	<b>276</b>	<b>-186</b>
Ħad-Dingli	21	14	7	4	-3
Ħal Balzan	88	49	43	13	-30
Ħal Lija	95	53	53	24	-29
Ħ'Attard	211	172	113	66	-47
Ħaż-Żebbuġ	170	112	85	52	-33
L-Iklin	49	41	27	19	-8
L-Imdina	10	2	9	1	-8
L-Imtarfa	69	12	60	2	-58
Ir-Rabat	144	125	49	65	16
Is-Siġġiewi	55	66	16	30	14
<b>Northern</b>	<b>1,259</b>	<b>965</b>	<b>648</b>	<b>375</b>	<b>-273</b>
Ħal Ġharghur	49	48	24	15	-9
Il-Mellieħa	183	122	112	57	-55
L-Imġarr	73	45	28	20	-8
Il-Mosta	322	252	146	88	-58
In-Naxxar	322	259	160	100	-60
San Pawl Il-Baħar	310	239	178	95	-83

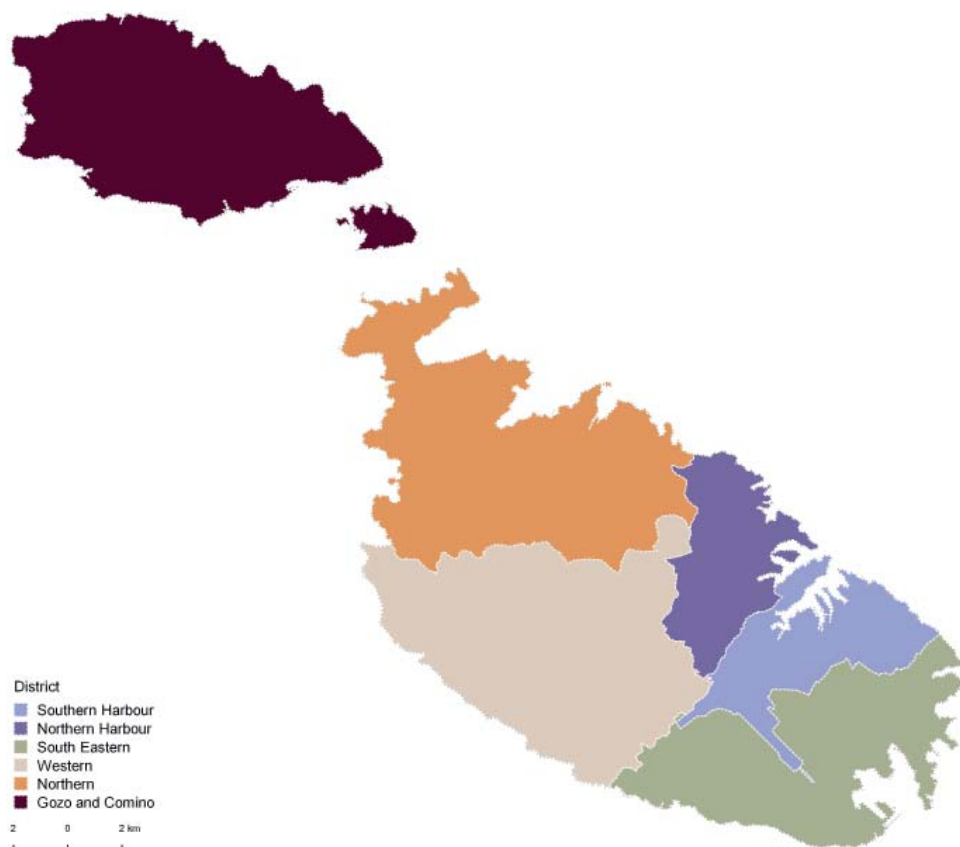
... Table 10. Road traffic accidents by district/locality

District/Locality	January-June		April-June		
	2019	2020	2019	2020	Change
<b>Gozo and Comino</b>	<b>422</b>	<b>319</b>	<b>225</b>	<b>146</b>	<b>-79</b>
Il-Fontana	8	7	7	3	-4
Għajnsielem and Comino	50	39	26	17	-9
L-Għarb	20	9	14	8	-6
L-Għasri	9	5	3	3	-
Il-Munxar	12	9	6	2	-4
In-Nadur	25	24	15	10	-5
Il-Qala	12	8	7	6	-1
San Lawrenz	3	3	2	2	-
Ta' Kerċem	6	6	-	3	3
Ta' Sannat	10	7	5	3	-2
Ir-Rabat	145	100	71	42	-29
Ix-Xagħra	24	20	16	8	-8
Ix-Xewkija	68	54	36	24	-12
Iż-Zebbuġ	30	28	17	15	-2
<b>Total</b>	<b>7,474</b>	<b>5,612</b>	<b>3,818</b>	<b>2,255</b>	<b>-1,563</b>

Chart 5. Top ten localities in which most road traffic accidents occurred: April-June 2020



## Graphical Illustration of MALTA by NUTS Classification



### Districts classification

#### Southern Harbour

Bormla; Il-Fgura; Floriana; Ғal Luqa; Ғaḷ-Ḷabbar; Il-Kalkara; Il-Marsa; Raḡal Ġdid; Santa Luċija; L-Isla; Ғal Tarxien; Valletta; Il-Birgu; Ix-Xgħajra.

#### Northern Harbour

Birkirkara; Il-Gżira; Ғal Qormi; Il-Ғamrun; L-Imsida; Pembroke; San Ġwann; Santa Venera; San Ġiljan; Is-Swieqi; Ta' Xbiex; Tal-Pietà; Tas-Sliema.

#### South Eastern

Birżebbuġa; Il-Gudja; Ғal Għaxaq; Ғal Kirkop; Ғal Safi; Marsaskala; Marsaxlokk; L-Imqabba; Il-Qrendi; Iz-ᶒejtun; iz-ᶒurrieq.

#### Western

Ғad-Dingli; Ғal Balzan; Ғal Lija; Ғ'Attard; Ғaḷ-ᶒebbuġ; L-Iklin; L-Imdina; L-Imtarfa; Ir-Rabat; Is-Siġġiewi.

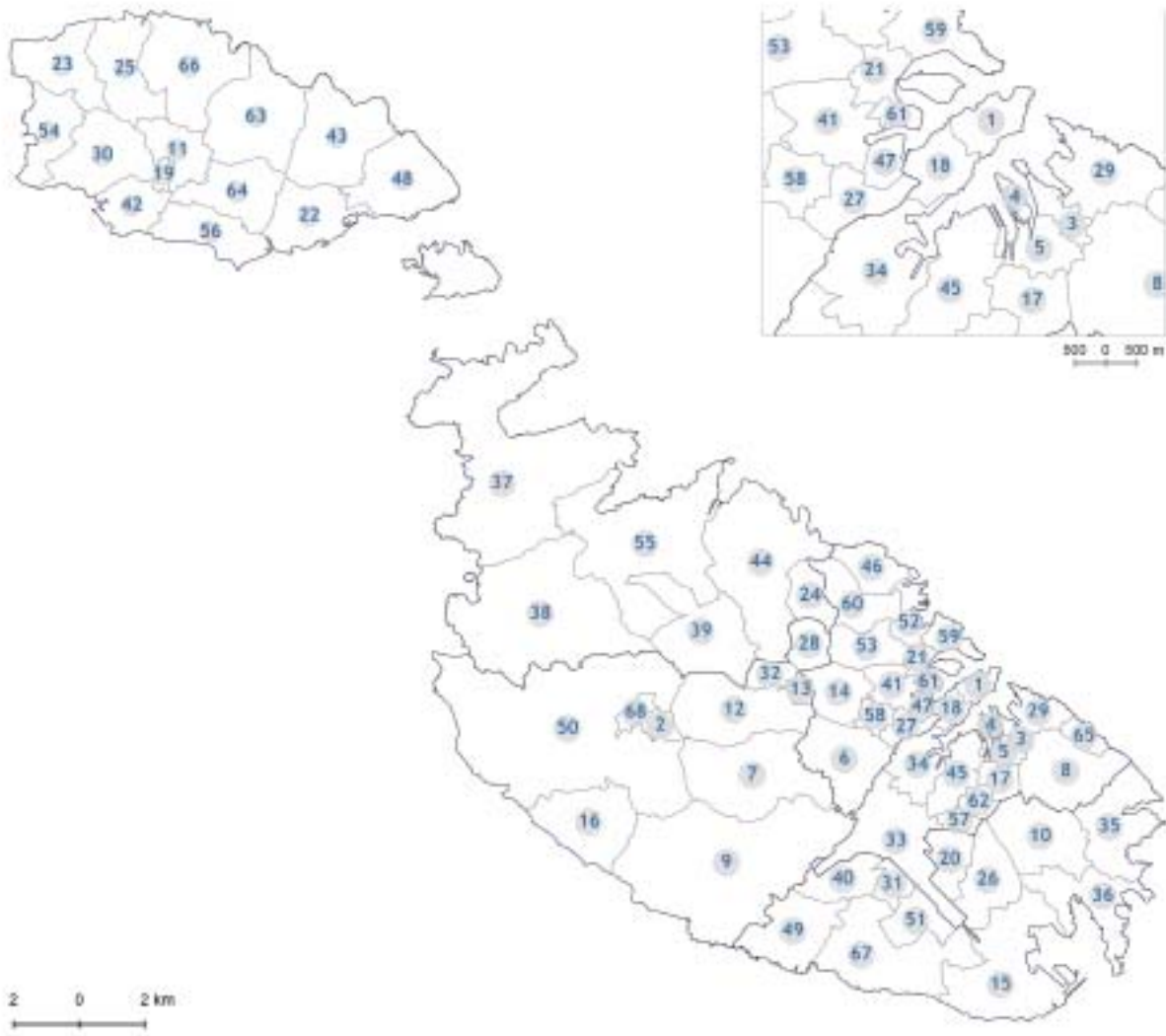
#### Northern

Ғal Għargħur; Il-Mellieħa; L-Imġarr; Il-Mosta; In-Naxxar; San Pawl Il-Baħar.

#### Gozo and Comino

Il-Fontana; Għajnsielem and Comino; L-Għarb; L-Għasri; Il-Munxar; In-Nadur; Il-Qala; San Lawrenz; Ta' Kerċem; Ta' Sannat; Ir-Rabat; Ix-Xagħra; Ix-Xewkija; Iᶒ-ᶒebbuġ.

## Graphical Illustration of MALTA by LAU2 Classification



### Key

1 Valletta	18 Floriana	35 Marsaskala	52 San Ġiljan
2 L-Imdina	19 Il-Fontana	36 Marsaxlokk	53 San Ġwann
3 Il-Birgu	20 Il-Gudja	37 Il-Mellieħa	54 San Lawrenz
4 L-Isla	21 Il-Gżira	38 L-Imġarr	55 San Pawl Il-Baħar
5 Bormla	22 Għajnsielem and Comino	39 Il-Mosta	56 Ta' Sannat
6 Ħal Qormi	23 L-Għarb	40 L-Imqabba	57 Santa Luċija
7 Ħaż-Żebbuġ	24 Ħal Għargħur	41 L-Imnsida	58 Santa Venera
8 Ħaż-Żabbar	25 L-Għasri	42 Il-Munxar	59 Tas-Sliema
9 Is-Siġġiewi	26 Ħal Għaxaq	43 In-Nadur	60 Is-Swieqi
10 Iż-Żejtun	27 Il-Ħamrun	44 In-Naxxar	61 Ta' Xbiex
11 Ir-Rabat, Għawdex	28 L-Iklin	45 Raħal Ġdid	62 Ħal Tarxien
12 Ħ'Attard	29 Il-Kalkara	46 Pembroke	63 Ix-Xagħra
13 Ħal Balzan	30 Ta' Kerċem	47 Tal-Pieta'	64 Ix-Xewkija
14 Birkirkara	31 Ħal Kirkop	48 Il-Qala	65 Ix-Xgħajra
15 Birzebbuga	32 Ħal Lija	49 Il-Qrendi	66 Iż-Żebbuġ, Għawdex
16 Ħad-Dingli	33 Ħal Luqa	50 Ir-Rabat, Malta	67 Iż-Żurrieq
17 Il-Fgura	34 Il-Marsa	51 Ħal Safi	68 L-Imtarfa

## Methodological Notes

1. Road traffic accidents data are compiled from administrative information provided by the Police Department and the Malta Insurance Association (Guard and Warden Service House Limited).
2. Total road traffic accidents consist of the road traffic accidents involving casualties (Police reports) and the minor road traffic accidents without casualties (Police and Warden reports).
3. Minor (non-injury) road traffic accidents which are either not reported or directly reported to Insurance Agencies by means of the Traffic Accident Form (i.e. where no Police or Wardens are called on the accident scene and are settled by the completion of the relevant form) are not accounted for.
4. Minor (non-injury) road traffic accidents refer to accidents assessed by the Wardens and/or the Police involving at least one vehicle and in which no persons are injured (Table 2).
5. Insignificant injury is determined by the Police as the sustaining of a very minimal injury (e.g. bruise, scratch, etc.) or shock due to accident which, in most cases, requires very basic treatment or no treatment at all.
6. The definitions of slight and grievous injuries are as listed in Art. 214 *et sequitur* of the Criminal Code, Chapter 9 of the Laws of Malta: <http://www.justiceservices.gov.mt/DownloadDocument.aspx?app=lom&itemid=8574>
7. UNECE defines road fatal injury as: "Any person who was killed outright or who died within 30 days as a result of the accident".
8. The casualty-to-accident ratio indicates the risk level of suffering an injury in an accident. Therefore, a higher percentage rate means that the corresponding accidents were more serious (i.e. more persons were injured) (Table 8).
9. Data is subject to revision.
10. More information relating to this news release may be accessed at:  
Sources and Methods: [https://nso.gov.mt/en/nso/Sources\\_and\\_Methods/Unit\\_B3/Environment\\_Energy\\_Transport\\_and\\_Agriculture\\_Statistics/Pages/Road-Traffic-Accidents.aspx](https://nso.gov.mt/en/nso/Sources_and_Methods/Unit_B3/Environment_Energy_Transport_and_Agriculture_Statistics/Pages/Road-Traffic-Accidents.aspx)  
Statistical Concepts: <http://nso.gov.mt/metadata/concepts.aspx>
11. References to this news release are to be cited appropriately.
12. A detailed news release calendar is available on: [https://nso.gov.mt/en/News\\_Releases/Release\\_Calendar/Pages/News-Release-Calendar.aspx](https://nso.gov.mt/en/News_Releases/Release_Calendar/Pages/News-Release-Calendar.aspx)