

14 April 2021 | 1100 hrs | 066/2021

During the first quarter of 2021, sea transport between Malta and Gozo registered decreases in trips, passengers and vehicles when compared to the corresponding quarter of 2020.

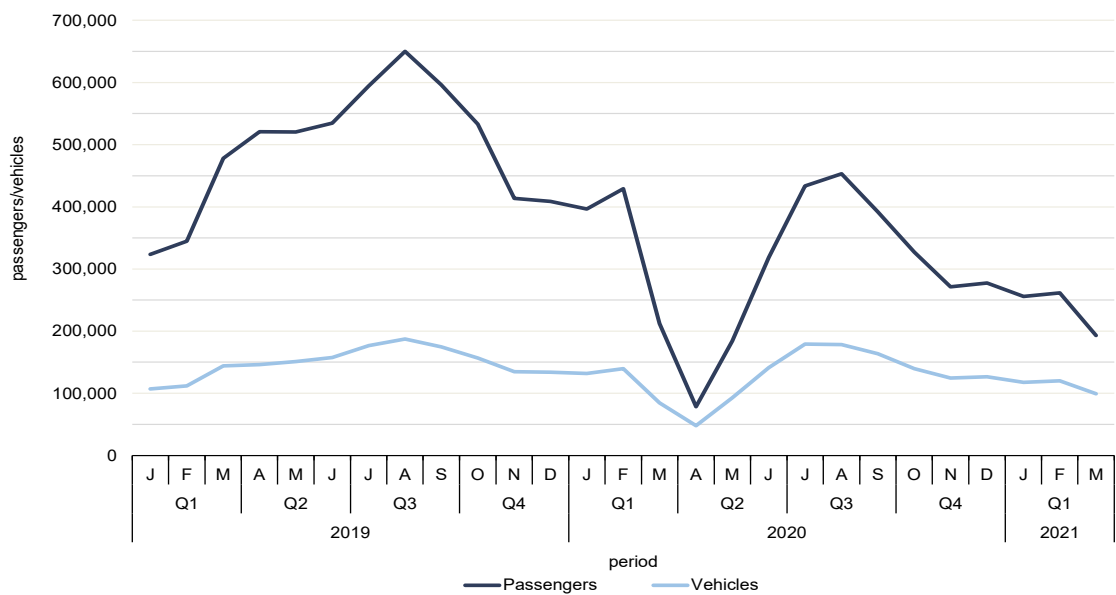
Sea Transport between Malta and Gozo: Q1/2021

A total of 710,749 passengers travelled between Malta and Gozo during the first quarter of 2021, a decrease of 31.5 per cent when compared to the corresponding quarter of 2020. The highest number of passengers was recorded in February - 261,636 or 36.8 per cent of the total for the quarter. When compared to the previous year, the number of vehicles decreased by 5.7 per cent, totalling 336,816 (Tables 1 and 2, Chart 1).

The number of trips amounted to 6,139, a decrease of 16.2 per cent over the same period in 2020 (Table 1). The majority of trips took place in March - 2,110 or 34.4 per cent of total trips for the quarter (Table 2).

During January-March, both passenger and vehicle traffic originating from Ċirkewwa was busiest on Friday and Saturday. On the other hand, from Mġarr terminal, passenger traffic was highest on Sunday and Saturday, while the highest numbers for vehicles were recorded on Sunday and Monday (Charts 3 and 4) ■

Chart 1. Passengers and vehicles crossing between Malta and Gozo



Statistics in this News Release should be interpreted in context to the unprecedented developments and restrictions related to COVID-19.

Table 1. Sea transport between Malta and Gozo by quarter

Quarter	2019	2020	2021	Change	Percentage change	
				2021/2020	2021/2020	
Trips	Q1	5,449	7,324	6,139	-1,185	-16.2
	Q2	6,289	5,334			
	Q3	8,240	8,300			
	Q4	7,653	8,094			
	Total	27,631	29,052			
Vehicles	Q1	363,460	356,997	336,816	-20,181	-5.7
	Q2	454,818	282,446			
	Q3	538,864	521,914			
	Q4	425,767	390,781			
	Total	1,782,909	1,552,138			
Passengers	Q1	1,146,490	1,038,142	710,749	-327,393	-31.5
	Q2	1,575,472	581,311			
	Q3	1,840,575	1,278,474			
	Q4	1,355,243	876,054			
	Total	5,917,780	3,773,981			

Chart 2. Passengers and vehicles to and from Malta and Gozo: January-March

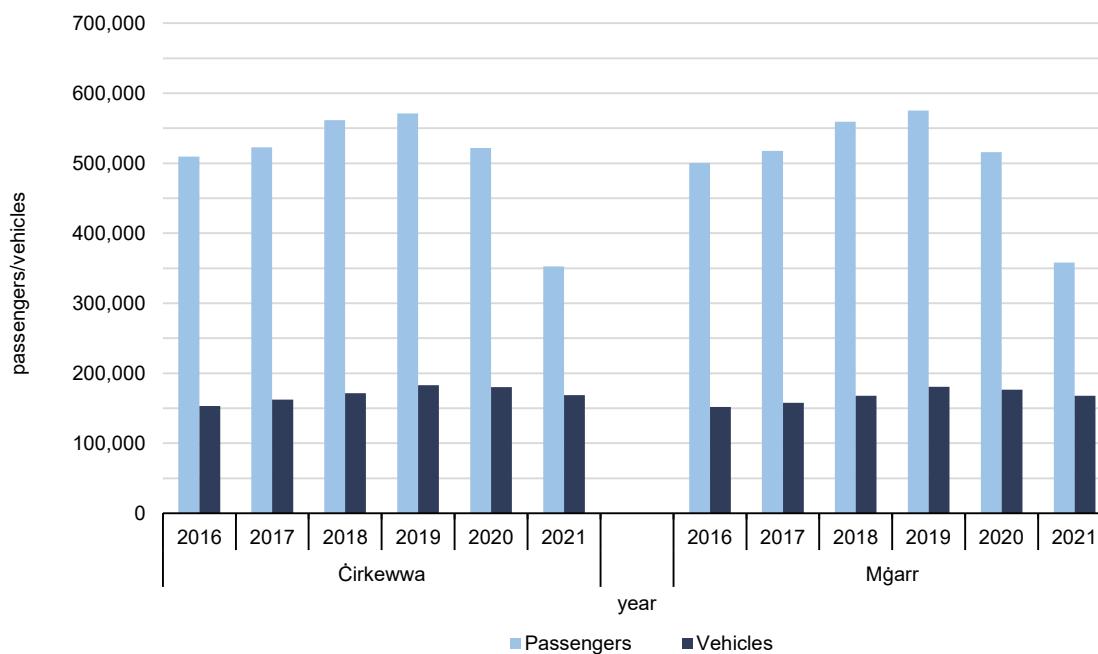


Table 2. Sea transport between Malta and Gozo by month

Month	2019	2020	2021	Change	Percentage change	
				2021/2020	2021/2020	
Trips	January	1,739	2,454	2,090	-364	-14.8
	February	1,676	2,494	1,939	-555	-22.3
	March	2,034	2,376	2,110	-266	-11.2
	April	1,957	1,534			
	May	2,014	1,664			
	June	2,318	2,136			
	July	2,716	2,790			
	August	2,802	2,788			
	September	2,722	2,722			
	October	2,712	2,760			
	November	2,421	2,642			
	December	2,520	2,692			
	Total	27,631	29,052			
Vehicles	January	107,174	132,191	117,519	-14,672	-11.1
	February	112,014	139,905	119,878	-20,027	-14.3
	March	144,272	84,901	99,419	14,518	17.1
	April	146,216	47,805			
	May	150,984	93,064			
	June	157,618	141,577			
	July	176,767	179,425			
	August	187,536	178,527			
	September	174,561	163,962			
	October	157,109	139,860			
	November	134,764	124,499			
	December	133,894	126,422			
	Total	1,782,909	1,552,138			
Passengers	January	323,772	396,542	255,979	-140,563	-35.4
	February	344,773	429,259	261,636	-167,623	-39.0
	March	477,945	212,341	193,134	-19,207	-9.0
	April	520,755	78,407			
	May	520,284	184,082			
	June	534,433	318,822			
	July	594,610	433,455			
	August	649,878	452,929			
	September	596,087	392,090			
	October	533,020	327,214			
	November	413,684	271,499			
	December	408,539	277,341			
	Total	5,917,780	3,773,981			

Table 3. Sea transport to and from Malta and Gozo by month

Month	Ċirkewwa - Mgarr		Change Percentage change		Mgarr - Ċirkewwa		Change Percentage change	
	2020	2021	2021/2020	2021/2020	2020	2021	2021/2020	2021/2020
Trips								
January	1,227	1,045	-182	-14.8	1,227	1,045	-182	-14.8
February	1,249	969	-280	-22.4	1,245	970	-275	-22.1
March	1,187	1,055	-132	-11.1	1,189	1,055	-134	-11.3
April	766				768			
May	832				832			
June	1,068				1,068			
July	1,395				1,395			
August	1,394				1,394			
September	1,361				1,361			
October	1,380				1,380			
November	1,321				1,321			
December	1,346				1,346			
Total	14,526				14,526			
Vehicles								
January	66,433	57,777	-8,656	-13.0	65,758	59,742	-6,016	-9.1
February	71,525	60,569	-10,956	-15.3	68,380	59,309	-9,071	-13.3
March	42,265	50,526	8,261	19.5	42,636	48,893	6,257	14.7
April	24,238				23,567			
May	47,477				45,587			
June	71,934				69,643			
July	93,028				86,397			
August	89,296				89,231			
September	81,801				82,161			
October	71,481				68,379			
November	60,877				63,622			
December	65,450				60,972			
Total	785,805				766,333			
Passengers								
January	199,295	124,175	-75,120	-37.7	197,247	131,804	-65,443	-33.2
February	217,473	131,298	-86,175	-39.6	211,786	130,338	-81,448	-38.5
March	105,273	97,122	-8,151	-7.7	107,068	96,012	-11,056	-10.3
April	39,831				38,576			
May	92,580				91,502			
June	159,891				158,931			
July	218,756				214,699			
August	220,719				232,210			
September	192,493				199,597			
October	164,461				162,753			
November	130,497				141,002			
December	140,308				137,033			
Total	1,881,577				1,892,404			

Table 4. Sea transport between Malta and Gozo by day of the week

Day of the week		January-March			Change	Percentage change
		2019	2020	2021	2021/2020	2021/2020
Trips	Monday	710	1,012	862	-150	-14.8
	Tuesday	774	1,002	877	-125	-12.5
	Wednesday	757	1,025	885	-140	-13.7
	Thursday	762	1,051	809	-242	-23.0
	Friday	818	1,114	960	-154	-13.8
	Saturday	750	1,028	788	-240	-23.3
	Sunday	878	1,092	958	-134	-12.3
	Total	5,449	7,324	6,139	-1,185	-16.2
Vehicles	Monday	46,750	48,258	44,158	-4,100	-8.5
	Tuesday	49,150	44,203	45,938	1,735	3.9
	Wednesday	48,512	46,828	46,580	-248	-0.5
	Thursday	49,127	51,511	44,754	-6,757	-13.1
	Friday	57,833	59,587	54,854	-4,733	-7.9
	Saturday	53,338	52,253	51,095	-1,158	-2.2
	Sunday	58,750	54,357	49,437	-4,920	-9.1
	Total	363,460	356,997	336,816	-20,181	-5.7
Passengers	Monday	141,915	135,583	88,085	-47,498	-35.0
	Tuesday	147,649	117,484	91,224	-26,260	-22.4
	Wednesday	148,152	133,624	95,368	-38,256	-28.6
	Thursday	148,692	152,398	88,095	-64,303	-42.2
	Friday	179,425	168,113	113,493	-54,620	-32.5
	Saturday	182,806	159,454	115,388	-44,066	-27.6
	Sunday	197,851	171,486	119,096	-52,390	-30.6
	Total	1,146,490	1,038,142	710,749	-327,393	-31.5

Chart 3. Vehicles to and from Malta and Gozo by day of the week: January-March

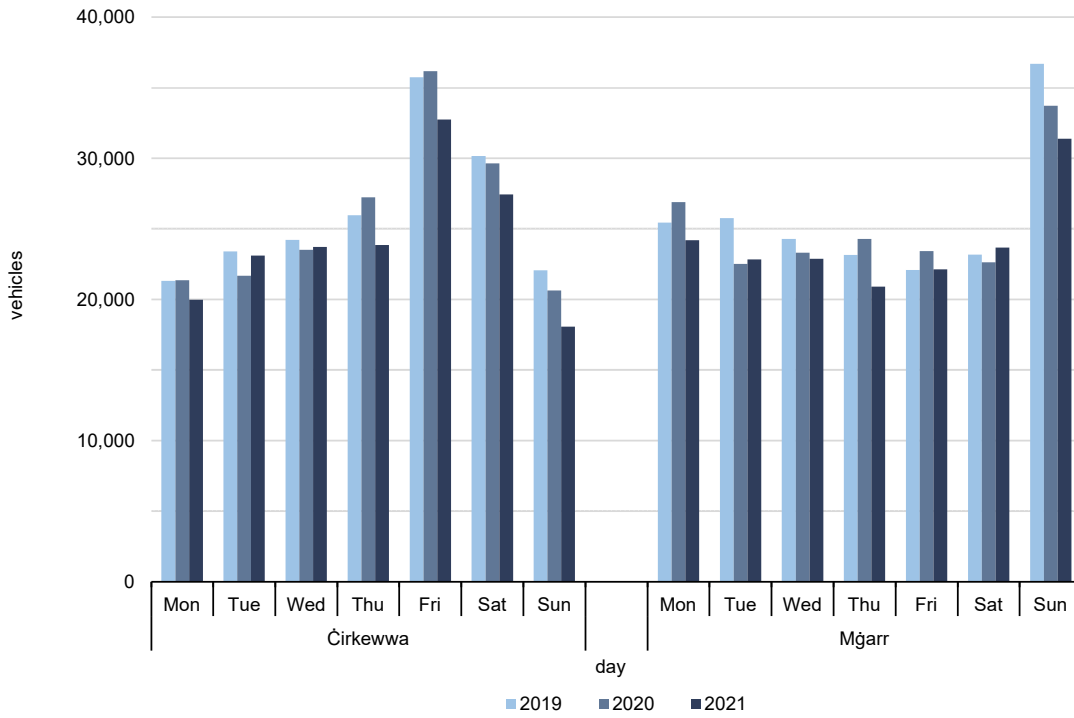
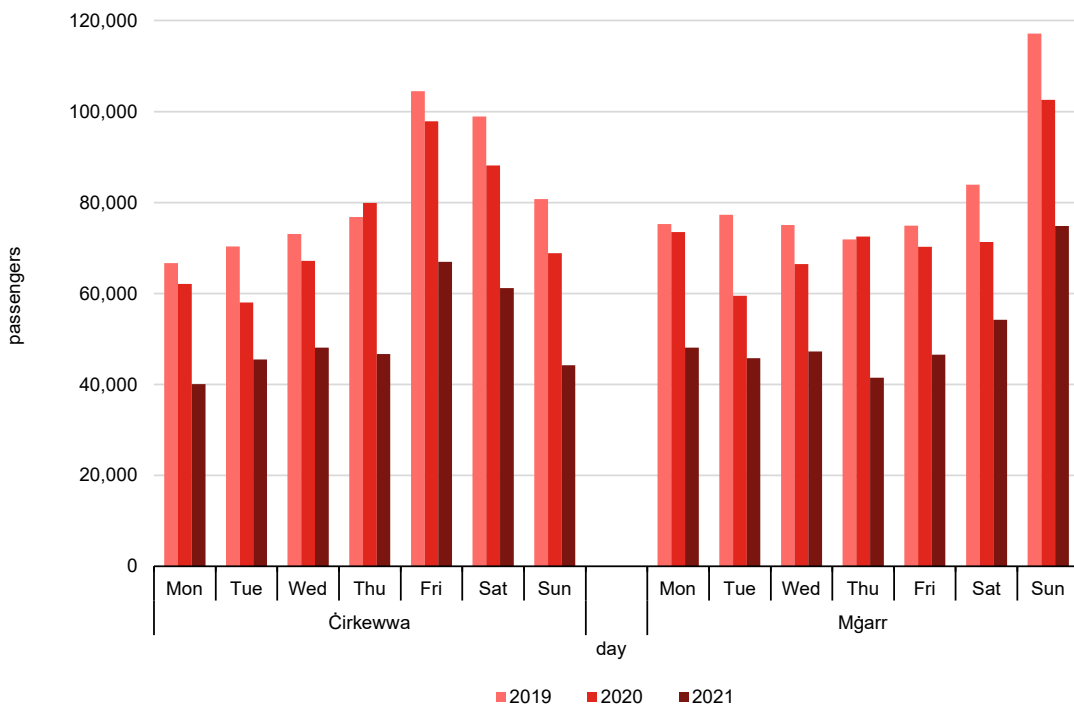


Chart 4. Passengers to and from Malta and Gozo by day of the week: January-March



Methodological Notes

1. The source for the data included in this release is administrative information provided by the Gozo Channel Co. Ltd.
2. The table below illustrates the passenger and vehicle capacity of each Gozo Channel vessel:

Carrying capacity

Vessel	Vehicles	Passengers
MV Gaudos	72	900
MV Malita	138	900
MV Ta' Pinu	138	900
MV Nikolaos	160	650 (Summer)/ 350 (Winter)

Periods when vessels were out of service for docking purposes:

MV Gaudos: 04/01/2021 - 11/02/2021

MV Malita: 07/05/2018 - 11/05/2018, 09/01/2019 - 31/01/2019, 06/02/2019 - 13/02/2019, 07/03/2019 - 08/03/2019 and 25/11/2019 - 02/12/2019.

MV Ta' Pinu: 08/01/2018 - 30/01/2018, 06/01/2020 - 10/02/2020.

MV Nikolaos started operating on 13/06/2019.

MV Nikolaos was put temporarily out of service as from 27/04/2020 until 02/07/2020.

3. Data for passengers comprise: foot and vehicle passengers and vehicle drivers.
4. Different approaches to data collection are being applied at the Mġarr and Ċirkewwa harbours. Data source for the Mġarr side includes Automated Ticketing System (ATS), while on the other hand data for the Ċirkewwa side is dependent on the manual clicking system.
5. The data are not normally subject to revisions.
6. References to this news release are to be cited appropriately.
7. More information relating to this news release may be accessed at:

Sources and Methods:

https://nso.gov.mt/en/nso/Sources_and_Methods/Unit_02/Regional_and_Geospatial_Statistics/Pages/Sea-Transport-between-Malta-and-Gozo.aspx

8. A detailed news release calendar is available on https://nso.gov.mt/en/News_Releases/Release_Calendar/Pages/News-Release-Calendar.aspx