

In August 2022, registered full-time employment increased by 6.2 per cent while part-time employment as a primary job increased by 5.9 per cent when compared to August 2021.

## Registered Employment: August 2022

Administrative data provided by Jobsplus show that, over a period of one year, the labour supply (excluding part-timers) increased by 6.0 per cent, reaching 256,063 (see methodological note 5). This was mainly attributed to a year-on-year increase in the full-time registered employment (14,956) and a decrease in registered unemployment (520) (Table 1).

### Registered full-time employment

During August 2022, accommodation and food services activities (NACE 55-56, 2,650) and administrative and support service activities (NACE 77-82, 2,288) contributed mostly to the increase in employment, when compared to August 2021 (Table 1). Registered full-time employment in the private sector went up by 14,765 persons to 203,756. Public sector full-time employment increased by 191 persons to 51,385 (Table 2).

The number of persons registered as full-time self-employed rose by 609 when compared to August 2021, while the number of persons registered as employees increased by 14,347. Full-time employment for males and females went up by 6.3 per cent and 6.1 per cent, respectively, over 2021 levels (Table 2).

### Registered part-time employment

Registered part-time employment in August 2022 increased by 8.5 per cent when compared to the corresponding month in 2021. The sectors that contributed to the overall increase were professional, scientific and technical activities (NACE 69-75, 937) followed by transportation and storage sector (NACE 49-53, 776) (Table 3).

The number of part-timers who also held a full-time job amounted to 38,541 up by 10.9 per cent, when compared to the corresponding month in 2021. Employed persons whose part-time job was their primary occupation totalled 35,844 up by 5.9 per cent when compared to the same month in 2021 (Table 4) ■

Chart 1. Monthly full-time and part-time as a primary job

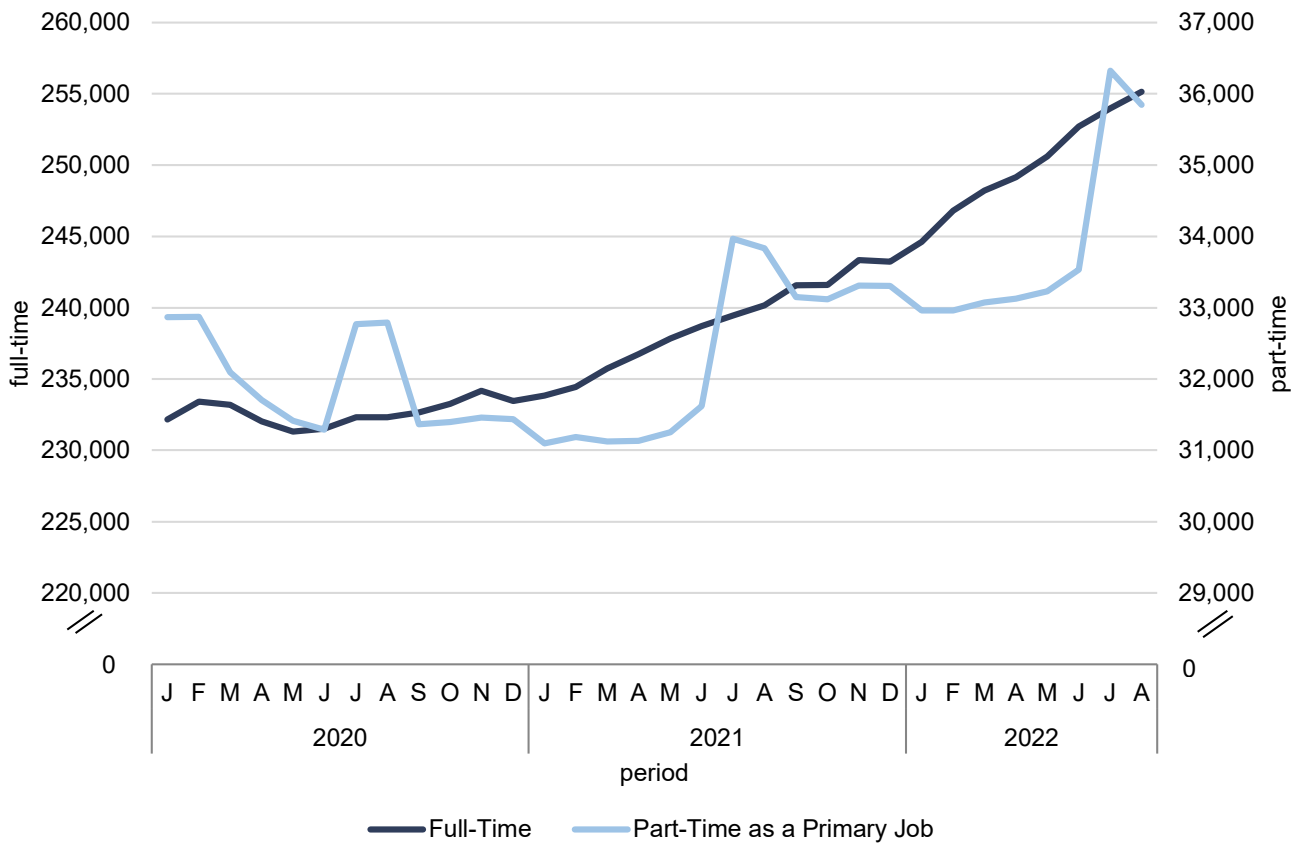


Table 1. Full-time employment classified by period and economic activity ...

NACE division	Economic activity	Average 2020	Average 2021 (Revised)	July 2021	July 2022	August 2021 (Revised)	August 2022
<b>01-03</b>	<b>Agriculture, forestry and fishing</b>	<b>2,498</b>	<b>2,617</b>	<b>2,639</b>	<b>2,670</b>	<b>2,644</b>	<b>2,671</b>
01	Crop and animal production, hunting and related service activities	1,654	1,729	1,767	1,738	1,765	1,743
02	Forestry and logging	-	-	-	-	-	-
03	Fishing and aquaculture	844	888	872	932	879	928
<b>05-09</b>	<b>Mining and quarrying</b>	<b>373</b>	<b>367</b>	<b>362</b>	<b>360</b>	<b>360</b>	<b>368</b>
05	Mining of coal and lignite	-	-	-	-	-	-
06	Extraction of crude petroleum and natural gas	-	-	-	-	-	-
07	Mining of metal ores	-	-	-	-	-	-
08	Other mining and quarrying	208	216	211	219	211	222
09	Mining support service activities	165	151	151	141	149	146
<b>10-33</b>	<b>Manufacturing</b>	<b>22,616</b>	<b>22,665</b>	<b>22,552</b>	<b>22,705</b>	<b>22,513</b>	<b>22,723</b>
10	Manufacture of food products	2,623	2,609	2,572	2,619	2,580	2,637
11	Manufacture of beverages	881	885	884	871	891	878
12	Manufacture of tobacco products	15	10	6	4	6	4
13	Manufacture of textiles	345	373	361	372	358	376
14	Manufacture of wearing apparel	150	133	112	116	111	117
15	Manufacture of leather and related products	17	16	14	17	14	16
16	Manufacture of wood and of products of wood and cork, except furniture; manufacture of articles of straw and plaiting materials	396	398	398	381	392	384
17	Manufacture of paper and paper products	272	276	279	270	276	277
18	Printing and reproduction of recorded media	1,646	1,679	1,688	1,649	1,691	1,644
19	Manufacture of coke and refined petroleum products	8	9	9	7	8	7
20	Manufacture of chemicals and chemical products	272	275	281	265	277	266
21	Manufacture of basic pharmaceutical products and pharmaceutical preparations	1,046	1,135	1,116	1,170	1,120	1,176
22	Manufacture of rubber and plastic products	1,670	1,646	1,641	1,666	1,634	1,670
23	Manufacture of other non-metallic mineral products	1,206	1,261	1,256	1,342	1,254	1,333
24	Manufacture of basic metals	229	253	258	277	256	274
25	Manufacture of fabricated metal products, except machinery and equipment	1,232	1,234	1,221	1,228	1,224	1,208
26	Manufacture of computer, electronic and optical products	2,290	2,175	2,158	2,277	2,150	2,298
27	Manufacture of electrical equipment	617	535	536	529	535	530
28	Manufacture of machinery and equipment n.e.c.	541	553	564	556	563	559
29	Manufacture of motor vehicles, trailers and semi-trailers	1,046	1,094	1,086	1,050	1,088	1,047

... Table 1. Full-time employment classified by period and economic activity

NACE division	Economic activity	Average 2020	Average 2021 (Revised)	July 2021	July 2022	August 2021 (Revised)	August 2022
30	Manufacture of other transport equipment	322	355	348	383	348	385
31	Manufacture of furniture	1,169	1,181	1,188	1,155	1,187	1,150
32	Other manufacturing	2,515	2,517	2,559	2,444	2,547	2,428
33	Repair and installation of machinery and equipment	2,108	2,063	2,017	2,057	2,003	2,059
<b>35</b>	<b>Electricity, gas, steam and air conditioning supply</b>	<b>204</b>	<b>233</b>	<b>233</b>	<b>293</b>	<b>233</b>	<b>331</b>
<b>36-39</b>	<b>Water supply; sewerage, waste management and remediation activities</b>	<b>1,777</b>	<b>1,804</b>	<b>1,784</b>	<b>1,862</b>	<b>1,797</b>	<b>1,875</b>
36	Water collection, treatment and supply	1,181	1,172	1,166	1,154	1,169	1,150
37	Sewerage	10	11	11	10	11	10
38	Waste collection, treatment and disposal activities; materials recovery	550	574	559	641	570	658
39	Remediation activities and other waste management services	36	47	48	57	47	57
<b>41-43</b>	<b>Construction</b>	<b>15,028</b>	<b>15,986</b>	<b>16,065</b>	<b>17,612</b>	<b>16,115</b>	<b>17,679</b>
41	Construction of buildings	5,836	6,104	6,132	6,978	6,146	6,958
42	Civil engineering	1,450	1,847	1,875	2,090	1,873	2,128
43	Specialised construction activities	7,742	8,035	8,058	8,544	8,096	8,593
<b>45-47</b>	<b>Wholesale and retail trade; repair of motor vehicles and motorcycles</b>	<b>28,947</b>	<b>29,431</b>	<b>29,606</b>	<b>30,731</b>	<b>29,669</b>	<b>30,864</b>
45	Wholesale and retail trade and repair of motor vehicles and motorcycles	2,822	2,816	2,811	2,784	2,808	2,792
46	Wholesale trade, except of motor vehicles and motorcycles	10,999	11,247	11,266	11,856	11,319	11,891
47	Retail trade, except of motor vehicles and motorcycles	15,126	15,368	15,529	16,091	15,542	16,181
<b>49-53</b>	<b>Transportation and storage</b>	<b>11,977</b>	<b>11,825</b>	<b>11,876</b>	<b>12,991</b>	<b>11,885</b>	<b>13,042</b>
49	Land transport and transport via pipelines	4,838	4,818	4,818	5,346	4,821	5,367
50	Water transport	508	567	588	648	584	653
51	Air transport	1,844	1,625	1,627	1,775	1,626	1,789
52	Warehousing and support activities for transportation	3,818	3,704	3,710	3,952	3,724	3,968
53	Postal and courier activities	969	1,111	1,133	1,270	1,130	1,265
<b>55-56</b>	<b>Accommodation and food service activities</b>	<b>15,443</b>	<b>15,034</b>	<b>15,148</b>	<b>17,770</b>	<b>15,349</b>	<b>17,999</b>
55	Accommodation	6,038	5,538	5,626	6,794	5,751	6,863
56	Food and beverage service activities	9,405	9,496	9,522	10,976	9,598	11,136
<b>58-63</b>	<b>Information and communication</b>	<b>8,322</b>	<b>8,797</b>	<b>8,860</b>	<b>9,491</b>	<b>8,891</b>	<b>9,449</b>
58	Publishing activities	910	994	994	1,125	1,016	1,136
59	Motion picture, video and television programme production, sound recording and music publishing activities	425	437	462	413	475	451
60	Programming and broadcasting activities	268	259	256	257	255	262

... Table 1. Full-time employment classified by period and economic activity

NACE division	Economic activity	Average 2020	Average 2021 (Revised)	July 2021	July 2022	August 2021 (Revised)	August 2022
61	Telecommunications	1,629	1,530	1,544	1,499	1,550	1,502
62	Computer programming, consultancy and related activities	4,058	4,493	4,524	5,078	4,529	4,997
63	Information service activities	1,032	1,084	1,080	1,119	1,066	1,101
<b>64-66</b>	<b>Financial and insurance activities</b>	<b>12,176</b>	<b>12,573</b>	<b>12,616</b>	<b>13,520</b>	<b>12,681</b>	<b>13,568</b>
64	Financial service activities, except insurance and pension funding	8,738	9,225	9,242	9,954	9,325	9,988
65	Insurance, reinsurance and pension funding, except compulsory social security	1,069	1,064	1,062	1,115	1,065	1,118
66	Activities auxiliary to financial services and insurance activities	2,369	2,284	2,312	2,451	2,291	2,462
<b>68</b>	<b>Real estate activities</b>	<b>2,189</b>	<b>2,358</b>	<b>2,373</b>	<b>2,610</b>	<b>2,386</b>	<b>2,591</b>
<b>69-75</b>	<b>Professional, scientific and technical activities</b>	<b>16,602</b>	<b>17,378</b>	<b>17,277</b>	<b>18,697</b>	<b>17,384</b>	<b>18,743</b>
69	Legal and accounting activities	4,474	4,541	4,578	4,910	4,601	4,930
70	Activities of head offices; management consultancy activities	5,705	6,218	6,084	6,791	6,132	6,803
71	Architectural and engineering activities; technical testing and analysis	3,111	3,169	3,169	3,294	3,199	3,299
72	Scientific research and development	85	126	123	134	126	142
73	Advertising and market research	2,070	2,087	2,081	2,260	2,086	2,252
74	Other professional, scientific and technical activities	1,006	1,070	1,073	1,147	1,071	1,152
75	Veterinary activities	151	167	169	161	169	165
<b>77-82</b>	<b>Administrative and support service activities</b>	<b>23,818</b>	<b>23,563</b>	<b>23,628</b>	<b>25,605</b>	<b>23,531</b>	<b>25,819</b>
77	Rental and leasing activities	1,642	1,683	1,703	1,840	1,703	1,856
78	Employment activities	6,169	6,151	6,239	7,074	6,217	7,140
79	Travel agency, tour operator and other reservation service and related activities	1,409	1,406	1,419	1,764	1,431	1,773
80	Security and investigation activities	2,986	3,373	3,395	3,637	3,421	3,719
81	Services to buildings and landscape activities	6,969	6,540	6,452	6,921	6,386	6,942
82	Office administrative, office support and other business support activities	4,643	4,410	4,420	4,369	4,373	4,389
<b>84</b>	<b>Public administration and defence; compulsory social security</b>	<b>16,291</b>	<b>17,002</b>	<b>16,963</b>	<b>17,055</b>	<b>17,043</b>	<b>17,086</b>
<b>85</b>	<b>Education</b>	<b>18,359</b>	<b>18,826</b>	<b>18,819</b>	<b>19,329</b>	<b>18,781</b>	<b>19,198</b>
<b>86-88</b>	<b>Human health and social work activities</b>	<b>19,530</b>	<b>20,715</b>	<b>20,849</b>	<b>21,325</b>	<b>20,857</b>	<b>21,528</b>
86	Human health activities	10,113	10,520	10,534	10,813	10,530	10,834
87	Residential care activities	6,705	7,315	7,411	7,494	7,414	7,661
88	Social work activities without accommodation	2,712	2,880	2,904	3,018	2,913	3,033
<b>90-93</b>	<b>Arts, entertainment and recreation</b>	<b>10,866</b>	<b>11,860</b>	<b>11,879</b>	<b>13,058</b>	<b>12,052</b>	<b>13,167</b>
90	Creative, arts and entertainment activities	962	1,010	1,003	1,071	998	1,052

... Table 1. Full-time employment classified by period and economic activity

NACE division	Economic activity	Average 2020	Average 2021 (Revised)	July 2021	July 2022	August 2021 (Revised)	August 2022
91	Libraries, archives, museums and other cultural activities	552	582	583	584	582	590
92	Gambling and betting activities	8,108	8,963	9,002	10,020	9,172	10,148
93	Sports activities and amusement and recreation activities	1,244	1,305	1,291	1,383	1,300	1,377
<b>94-96</b>	<b>Other service activities</b>	<b>5,062</b>	<b>5,253</b>	<b>5,265</b>	<b>5,593</b>	<b>5,360</b>	<b>5,713</b>
94	Activities of membership organisations	928	990	1,007	1,039	1,012	1,050
95	Repair of computers and personal and household goods	401	437	423	457	493	522
96	Other personal service activities	3,733	3,826	3,835	4,097	3,855	4,141
<b>97-98</b>	<b>Activities of households as employers; undifferentiated goods- and services-producing activities of households for own use</b>	<b>371</b>	<b>394</b>	<b>395</b>	<b>460</b>	<b>395</b>	<b>464</b>
97	Activities of households as employers of domestic personnel	371	394	395	460	395	464
98	Undifferentiated goods- and services-producing activities of private households for own use	-	-	-	-	-	-
<b>99</b>	<b>Activities of extraterritorial organisations and bodies</b>	<b>230</b>	<b>254</b>	<b>260</b>	<b>259</b>	<b>259</b>	<b>263</b>
<b>01-99</b>	<b>Total Gainfully Occupied (including apprentices)</b>	<b>232,679</b>	<b>238,935</b>	<b>239,449</b>	<b>253,996</b>	<b>240,185</b>	<b>255,141</b>
	<b>Registered Unemployed</b>	<b>3,162</b>	<b>1,794</b>	<b>1,542</b>	<b>925</b>	<b>1,442</b>	<b>922</b>
	<b>Part I</b>	<b>2,881</b>	<b>1,601</b>	<b>1,383</b>	<b>803</b>	<b>1,285</b>	<b>791</b>
	<b>Part II</b>	<b>281</b>	<b>193</b>	<b>159</b>	<b>122</b>	<b>157</b>	<b>131</b>
	<b>Labour Supply</b> (excluding part-time employment)	<b>235,841</b>	<b>240,729</b>	<b>240,991</b>	<b>254,921</b>	<b>241,627</b>	<b>256,063</b>

Table 2. Full-time employment classified by period, economic activity and category ...

NACE division	Economic activity	Category	Average 2020	Average 2021 (Revised)	July 2021	July 2022	August 2021 (Revised)	August 2022
01-03	Agriculture, forestry and fishing	Private Sector	2,109	2,155	2,155	2,162	2,159	2,166
		Public Sector	389	462	484	508	485	505
		Males	2,187	2,256	2,271	2,289	2,275	2,288
		Females	311	361	368	381	369	383
		Self-employed	1,364	1,381	1,385	1,354	1,381	1,354
		Employees	1,134	1,236	1,254	1,316	1,263	1,317
		Malta	2,007	2,099	2,119	2,156	2,123	2,153
		Gozo	491	518	520	514	521	518
		<b>Total</b>	<b>2,498</b>	<b>2,617</b>	<b>2,639</b>	<b>2,670</b>	<b>2,644</b>	<b>2,671</b>
05-09	Mining and quarrying	Private Sector	373	367	362	360	360	368
		Public Sector	-	-	-	-	-	-
		Males	329	324	319	313	318	317
		Females	44	43	43	47	42	51
		Self-employed	89	92	91	91	91	90
		Employees	284	275	271	269	269	278
		Malta	336	328	325	321	321	328
		Gozo	37	39	37	39	39	40
		<b>Total</b>	<b>373</b>	<b>367</b>	<b>362</b>	<b>360</b>	<b>360</b>	<b>368</b>
10-33	Manufacturing	Private Sector	22,246	22,253	22,124	22,338	22,093	22,360
		Public Sector	370	412	428	367	420	363
		Males	16,714	16,811	16,766	16,758	16,716	16,775
		Females	5,902	5,854	5,786	5,947	5,797	5,948
		Self-employed	1,805	1,868	1,868	1,883	1,874	1,888
		Employees	20,811	20,797	20,684	20,822	20,639	20,835
		Malta	21,505	21,533	21,427	21,476	21,388	21,491
		Gozo	1,111	1,132	1,125	1,229	1,125	1,232
		<b>Total</b>	<b>22,616</b>	<b>22,665</b>	<b>22,552</b>	<b>22,705</b>	<b>22,513</b>	<b>22,723</b>
35	Electricity, gas, steam and air conditioning supply	Private Sector	40	45	45	46	45	82
		Public Sector	164	188	188	247	188	249
		Males	181	208	208	258	208	289
		Females	23	25	25	35	25	42
		Self-employed	-	-	-	-	-	-
		Employees	204	233	233	293	233	331
		Malta	167	219	229	287	229	325
		Gozo	37	14	4	6	4	6
		<b>Total</b>	<b>204</b>	<b>233</b>	<b>233</b>	<b>293</b>	<b>233</b>	<b>331</b>

... Table 2. Full-time employment classified by period, economic activity and category

NACE division	Economic activity	Category	Average 2020	Average 2021 (Revised)	July 2021	July 2022	August 2021 (Revised)	August 2022
36-39	Water supply; sewerage, waste management and remediation activities	Private Sector	542	584	570	669	581	688
		Public Sector	1,235	1,220	1,214	1,193	1,216	1,187
		Males	1,502	1,516	1,499	1,551	1,508	1,566
		Females	275	288	285	311	289	309
		Self-employed	80	82	81	79	83	79
		Employees	1,697	1,722	1,703	1,783	1,714	1,796
		Malta	1,696	1,712	1,675	1,758	1,697	1,771
		Gozo	81	92	109	104	100	104
		<b>Total</b>	<b>1,777</b>	<b>1,804</b>	<b>1,784</b>	<b>1,862</b>	<b>1,797</b>	<b>1,875</b>
41-43	Construction	Private Sector	14,435	15,434	15,509	17,065	15,561	17,132
		Public Sector	593	552	556	547	554	547
		Males	14,156	14,967	15,023	16,403	15,059	16,455
		Females	872	1,019	1,042	1,209	1,056	1,224
		Self-employed	3,789	3,918	3,929	3,978	3,936	3,975
		Employees	11,239	12,068	12,136	13,634	12,179	13,704
		Malta	13,636	14,426	14,457	15,842	14,503	15,904
		Gozo	1,392	1,560	1,608	1,770	1,612	1,775
		<b>Total</b>	<b>15,028</b>	<b>15,986</b>	<b>16,065</b>	<b>17,612</b>	<b>16,115</b>	<b>17,679</b>
45-47	Wholesale and retail trade; repair of motor vehicles and motorcycles	Private Sector	28,840	29,279	29,460	30,554	29,520	30,683
		Public Sector	107	152	146	177	149	181
		Males	18,551	18,781	18,827	19,485	18,859	19,534
		Females	10,396	10,650	10,779	11,246	10,810	11,330
		Self-employed	5,686	5,708	5,684	5,637	5,671	5,630
		Employees	23,261	23,723	23,922	25,094	23,998	25,234
		Malta	27,391	27,840	28,016	29,123	28,077	29,246
		Gozo	1,556	1,591	1,590	1,608	1,592	1,618
		<b>Total</b>	<b>28,947</b>	<b>29,431</b>	<b>29,606</b>	<b>30,731</b>	<b>29,669</b>	<b>30,864</b>
49-53	Transportation and storage	Private Sector	10,452	10,574	10,624	11,754	10,635	11,804
		Public Sector	1,525	1,251	1,252	1,237	1,250	1,238
		Males	9,736	9,561	9,588	10,529	9,596	10,568
		Females	2,241	2,264	2,288	2,462	2,289	2,474
		Self-employed	1,976	2,166	2,201	2,441	2,214	2,478
		Employees	10,001	9,659	9,675	10,550	9,671	10,564
		Malta	11,526	11,367	11,414	12,507	11,418	12,561
		Gozo	451	458	462	484	467	481
		<b>Total</b>	<b>11,977</b>	<b>11,825</b>	<b>11,876</b>	<b>12,991</b>	<b>11,885</b>	<b>13,042</b>



... Table 2. Full-time employment classified by period, economic activity and category

NACE division	Economic activity	Category	Average 2020	Average 2021 (Revised)	July 2021	July 2022	August 2021 (Revised)	August 2022
55-56	Accommodation and food service activities	Private Sector	15,443	15,034	15,148	17,770	15,349	17,999
		Public Sector	-	-	-	-	-	-
		Males	10,046	9,835	9,853	11,717	9,999	11,910
		Females	5,397	5,199	5,295	6,053	5,350	6,089
		Self-employed	1,869	1,967	1,975	2,036	1,982	2,037
		Employees	13,574	13,067	13,173	15,734	13,367	15,962
		Malta	14,193	13,769	13,874	16,307	14,070	16,544
		Gozo	1,250	1,265	1,274	1,463	1,279	1,455
		<b>Total</b>	<b>15,443</b>	<b>15,034</b>	<b>15,148</b>	<b>17,770</b>	<b>15,349</b>	<b>17,999</b>
58-63	Information and communication	Private Sector	7,606	8,083	8,144	8,796	8,174	8,755
		Public Sector	716	714	716	695	717	694
		Males	5,987	6,245	6,300	6,667	6,298	6,639
		Females	2,335	2,552	2,560	2,824	2,593	2,810
		Self-employed	670	736	730	771	747	784
		Employees	7,652	8,061	8,130	8,720	8,144	8,665
		Malta	7,954	8,394	8,459	9,056	8,489	9,020
		Gozo	368	403	401	435	402	429
		<b>Total</b>	<b>8,322</b>	<b>8,797</b>	<b>8,860</b>	<b>9,491</b>	<b>8,891</b>	<b>9,449</b>
64-66	Financial and insurance activities	Private Sector	11,359	11,717	11,731	12,662	11,803	12,696
		Public Sector	817	856	885	858	878	872
		Males	6,008	6,201	6,205	6,648	6,229	6,654
		Females	6,168	6,372	6,411	6,872	6,452	6,914
		Self-employed	143	159	165	154	165	152
		Employees	12,033	12,414	12,451	13,366	12,516	13,416
		Malta	11,731	12,123	12,165	13,022	12,225	13,064
		Gozo	445	450	451	498	456	504
		<b>Total</b>	<b>12,176</b>	<b>12,573</b>	<b>12,616</b>	<b>13,520</b>	<b>12,681</b>	<b>13,568</b>
68	Real estate activities	Private Sector	2,026	2,185	2,197	2,398	2,211	2,382
		Public Sector	163	173	176	212	175	209
		Males	1,383	1,483	1,501	1,649	1,509	1,617
		Females	806	875	872	961	877	974
		Self-employed	971	1,099	1,127	1,164	1,139	1,176
		Employees	1,218	1,259	1,246	1,446	1,247	1,415
		Malta	2,033	2,199	2,212	2,450	2,225	2,433
		Gozo	156	159	161	160	161	158
		<b>Total</b>	<b>2,189</b>	<b>2,358</b>	<b>2,373</b>	<b>2,610</b>	<b>2,386</b>	<b>2,591</b>

... Table 2. Full-time employment classified by period, economic activity and category

NACE division	Economic activity	Category	Average 2020	Average 2021 (Revised)	July 2021	July 2022	August 2021 (Revised)	August 2022
69-75	Professional, scientific and technical activities	Private Sector	16,415	17,177	17,086	18,493	17,194	18,539
		Public Sector	187	201	191	204	190	204
		Males	9,417	9,806	9,704	10,515	9,761	10,521
		Females	7,185	7,572	7,573	8,182	7,623	8,222
		Self-employed	2,640	2,854	2,894	2,999	2,908	3,012
		Employees	13,962	14,524	14,383	15,698	14,476	15,731
		Malta	16,032	16,745	16,638	18,002	16,742	18,039
		Gozo	570	633	639	695	642	704
		<b>Total</b>	<b>16,602</b>	<b>17,378</b>	<b>17,277</b>	<b>18,697</b>	<b>17,384</b>	<b>18,743</b>
77-82	Administrative and support service activities	Private Sector	20,802	20,559	20,624	22,690	20,542	22,903
		Public Sector	3,016	3,004	3,004	2,915	2,989	2,916
		Males	14,162	14,088	14,132	15,458	14,035	15,583
		Females	9,656	9,475	9,496	10,147	9,496	10,236
		Self-employed	1,340	1,416	1,461	1,461	1,460	1,468
		Employees	22,478	22,147	22,167	24,144	22,071	24,351
		Malta	22,394	21,976	22,010	23,843	21,896	24,046
		Gozo	1,424	1,587	1,618	1,762	1,635	1,773
		<b>Total</b>	<b>23,818</b>	<b>23,563</b>	<b>23,628</b>	<b>25,605</b>	<b>23,531</b>	<b>25,819</b>
84	Public administration and defence; compulsory social security	Private Sector	-	-	-	-	-	-
		Public Sector	16,291	17,002	16,963	17,055	17,043	17,086
		Males	10,278	10,632	10,567	10,559	10,611	10,581
		Females	6,013	6,370	6,396	6,496	6,432	6,505
		Self-employed	-	-	-	-	-	-
		Employees	16,291	17,002	16,963	17,055	17,043	17,086
		Malta	15,162	15,809	15,788	15,815	15,867	15,847
		Gozo	1,129	1,193	1,175	1,240	1,176	1,239
		<b>Total</b>	<b>16,291</b>	<b>17,002</b>	<b>16,963</b>	<b>17,055</b>	<b>17,043</b>	<b>17,086</b>
85	Education	Private Sector	6,351	6,541	6,558	6,982	6,544	6,868
		Public Sector	12,008	12,285	12,261	12,347	12,237	12,330
		Males	5,262	5,361	5,377	5,474	5,368	5,428
		Females	13,097	13,465	13,442	13,855	13,413	13,770
		Self-employed	486	511	509	522	512	525
		Employees	17,873	18,315	18,310	18,807	18,269	18,673
		Malta	16,959	17,401	17,392	17,868	17,356	17,742
		Gozo	1,400	1,425	1,427	1,461	1,425	1,456
		<b>Total</b>	<b>18,359</b>	<b>18,826</b>	<b>18,819</b>	<b>19,329</b>	<b>18,781</b>	<b>19,198</b>

... Table 2. Full-time employment classified by period, economic activity and category

NACE division	Economic activity	Category	Average 2020	Average 2021 (Revised)	July 2021	July 2022	August 2021 (Revised)	August 2022
86-88	Human health and social work activities	Private Sector	8,037	8,849	8,959	9,395	8,989	9,559
		Public Sector	11,493	11,866	11,890	11,930	11,868	11,969
		Males	6,711	7,057	7,105	7,149	7,100	7,204
		Females	12,819	13,658	13,744	14,176	13,757	14,324
		Self-employed	567	597	600	633	598	634
		Employees	18,963	20,118	20,249	20,692	20,259	20,894
		Malta	18,237	19,405	19,537	19,953	19,542	20,162
		Gozo	1,293	1,310	1,312	1,372	1,315	1,366
		<b>Total</b>	<b>19,530</b>	<b>20,715</b>	<b>20,849</b>	<b>21,325</b>	<b>20,857</b>	<b>21,528</b>
90-93	Arts, entertainment and recreation	Private Sector	10,112	11,052	11,068	12,238	11,239	12,353
		Public Sector	754	808	811	820	813	814
		Males	6,778	7,233	7,210	7,815	7,322	7,848
		Females	4,088	4,627	4,669	5,243	4,730	5,319
		Self-employed	910	967	974	1,007	983	1,012
		Employees	9,956	10,893	10,905	12,051	11,069	12,155
		Malta	10,538	11,503	11,519	12,687	11,687	12,791
		Gozo	328	357	360	371	365	376
		<b>Total</b>	<b>10,866</b>	<b>11,860</b>	<b>11,879</b>	<b>13,058</b>	<b>12,052</b>	<b>13,167</b>
94-96	Other service activities	Private Sector	5,040	5,232	5,243	5,572	5,338	5,692
		Public Sector	22	21	22	21	22	21
		Males	2,198	2,287	2,285	2,435	2,336	2,499
		Females	2,864	2,966	2,980	3,158	3,024	3,214
		Self-employed	2,554	2,686	2,690	2,737	2,699	2,753
		Employees	2,508	2,567	2,575	2,856	2,661	2,960
		Malta	4,806	4,985	5,001	5,325	5,093	5,442
		Gozo	256	268	264	268	267	271
		<b>Total</b>	<b>5,062</b>	<b>5,253</b>	<b>5,265</b>	<b>5,593</b>	<b>5,360</b>	<b>5,713</b>
97-98	Activities of households as employers; undifferentiated goods- and services-producing activities of households for own use	Private Sector	371	394	395	460	395	464
		Public Sector	-	-	-	-	-	-
		Males	47	46	47	55	44	56
		Females	324	348	348	405	351	408
		Self-employed	6	6	6	10	6	10
		Employees	365	388	389	450	389	454
		Malta	352	369	368	423	370	426
		Gozo	19	25	27	37	25	38
		<b>Total</b>	<b>371</b>	<b>394</b>	<b>395</b>	<b>460</b>	<b>395</b>	<b>464</b>

... Table 2. Full-time employment classified by period, economic activity and category

NACE division	Economic activity	Category	Average 2020	Average 2021 (Revised)	July 2021	July 2022	August 2021 (Revised)	August 2022
99	Activities of extraterritorial organisations and bodies	Private Sector	230	254	260	259	259	263
		Public Sector	-	-	-	-	-	-
		Males	147	162	164	164	165	167
		Females	83	92	96	95	94	96
		Self-employed	1	1	1	1	1	2
		Employees	229	253	259	258	258	261
		Malta	229	252	258	256	257	260
		Gozo	1	2	2	3	2	3
		<b>Total</b>	<b>230</b>	<b>254</b>	<b>260</b>	<b>259</b>	<b>259</b>	<b>263</b>
01-99	Total Gainfully Occupied (including apprentices)	Private Sector	182,829	187,768	188,262	202,663	188,991	203,756
		Public Sector	49,850	51,167	51,187	51,333	51,194	51,385 <sup>1</sup>
		Males	141,780	144,860	144,951	153,891	145,316	154,499
		Females	90,899	94,075	94,498	100,105	94,869	100,642
		Self-employed	26,946	28,214	28,371	28,958	28,450	29,059
		Employees	205,733	210,721	211,078	225,038	211,735	226,082
		Malta	218,884	224,454	224,883	238,477	225,575	239,595
		Gozo	13,795	14,481	14,566	15,519	14,610	15,546
		<b>Total</b>	<b>232,679</b>	<b>238,935</b>	<b>239,449</b>	<b>253,996</b>	<b>240,185</b>	<b>255,141</b>

<sup>1</sup> Public sector employment for August 2022 stood at 51,385 while the full-time equivalent (FTE) was calculated at 48,062. Refer to methodological note 5..

Table 3. Part-time employment classified by period and economic activity ...

NACE division	Economic activity	Average 2020	Average 2021 (Revised)	July 2021	July 2022	August 2021 (Revised)	August 2022
<b>01-03</b>	<b>Agriculture, forestry and fishing</b>	<b>2,888</b>	<b>3,122</b>	<b>3,133</b>	<b>3,330</b>	<b>3,153</b>	<b>3,353</b>
01	Crop and animal production, hunting and related service activities	2,262	2,503	2,512	2,708	2,531	2,732
02	Forestry and logging	-	-	-	-	-	-
03	Fishing and aquaculture	626	619	621	622	622	621
<b>05-09</b>	<b>Mining and quarrying</b>	<b>44</b>	<b>43</b>	<b>43</b>	<b>48</b>	<b>44</b>	<b>52</b>
05	Mining of coal and lignite	-	-	-	-	-	-
06	Extraction of crude petroleum and natural gas	-	-	-	-	-	-
07	Mining of metal ores	-	-	-	-	-	-
08	Other mining and quarrying	33	34	34	38	34	42
09	Mining support service activities	11	9	9	10	10	10
<b>10-33</b>	<b>Manufacturing</b>	<b>3,096</b>	<b>3,293</b>	<b>3,271</b>	<b>3,421</b>	<b>3,277</b>	<b>3,445</b>
10	Manufacture of food products	717	721	712	706	698	699
11	Manufacture of beverages	79	90	87	76	88	76
12	Manufacture of tobacco products	1	1	1	1	1	1
13	Manufacture of textiles	73	87	83	95	82	100
14	Manufacture of wearing apparel	77	87	82	92	81	91
15	Manufacture of leather and related products	3	6	6	7	6	7
16	Manufacture of wood and of products of wood and cork, except furniture; manufacture of articles of straw and plaiting materials	77	87	86	102	87	104
17	Manufacture of paper and paper products	34	38	38	39	36	40
18	Printing and reproduction of recorded media	200	217	215	243	213	253
19	Manufacture of coke and refined petroleum products	1	3	4	4	4	4
20	Manufacture of chemicals and chemical products	52	57	53	60	53	61
21	Manufacture of basic pharmaceutical products and pharmaceutical preparations	69	77	78	80	74	84
22	Manufacture of rubber and plastic products	92	135	135	165	161	170
23	Manufacture of other non-metallic mineral products	163	161	160	170	161	168
24	Manufacture of basic metals	81	95	97	98	95	97
25	Manufacture of fabricated metal products, except machinery and equipment	225	239	235	241	231	240
26	Manufacture of computer, electronic and optical products	68	60	55	54	58	57
27	Manufacture of electrical equipment	97	91	90	97	91	95
28	Manufacture of machinery and equipment n.e.c.	51	62	64	52	64	50
29	Manufacture of motor vehicles, trailers and semi-trailers	104	87	93	89	90	86
30	Manufacture of other transport equipment	98	88	77	82	77	87
31	Manufacture of furniture	309	301	303	287	296	284
32	Other manufacturing	172	235	249	278	261	289
33	Repair and installation of machinery and equipment	253	268	268	303	269	302
<b>35</b>	<b>Electricity, gas, steam and air conditioning supply</b>	<b>7</b>	<b>12</b>	<b>30</b>	<b>16</b>	<b>33</b>	<b>28</b>
<b>36-39</b>	<b>Water supply; sewerage, waste management and remediation activities</b>	<b>149</b>	<b>148</b>	<b>186</b>	<b>182</b>	<b>177</b>	<b>168</b>
36	Water collection, treatment and supply	40	41	83	81	75	70
37	Sewerage	3	3	3	3	3	2
38	Waste collection, treatment and disposal activities; materials recovery	100	98	95	91	94	89
39	Remediation activities and other waste management services	6	6	5	7	5	7

... Table 3. Part-time employment classified by period and economic activity

NACE division	Economic activity	Average 2020	Average 2021 (Revised)	July 2021	July 2022	August 2021 (Revised)	August 2022
<b>41-43</b>	<b>Construction</b>	<b>2,234</b>	<b>2,488</b>	<b>2,510</b>	<b>2,693</b>	<b>2,534</b>	<b>2,716</b>
41	Construction of buildings	550	607	628	646	636	642
42	Civil engineering	105	115	113	134	114	141
43	Specialised construction activities	1,579	1,766	1,769	1,913	1,784	1,933
<b>45-47</b>	<b>Wholesale and retail trade; repair of motor vehicles and motorcycles</b>	<b>10,375</b>	<b>10,625</b>	<b>10,481</b>	<b>11,071</b>	<b>10,493</b>	<b>11,045</b>
45	Wholesale and retail trade and repair of motor vehicles and motorcycles	742	760	742	812	748	810
46	Wholesale trade, except of motor vehicles and motorcycles	2,518	2,609	2,551	2,825	2,582	2,802
47	Retail trade, except of motor vehicles and motorcycles	7,115	7,256	7,188	7,434	7,163	7,433
<b>49-53</b>	<b>Transportation and storage</b>	<b>3,020</b>	<b>3,515</b>	<b>3,504</b>	<b>4,251</b>	<b>3,548</b>	<b>4,324</b>
49	Land transport and transport via pipelines	1,796	1,974	1,970	2,402	1,984	2,452
50	Water transport	159	170	174	190	174	184
51	Air transport	366	274	263	261	261	262
52	Warehousing and support activities for transportation	466	579	592	695	597	706
53	Postal and courier activities	233	518	505	703	532	720
<b>55-56</b>	<b>Accommodation and food service activities</b>	<b>7,172</b>	<b>7,154</b>	<b>7,202</b>	<b>7,623</b>	<b>7,236</b>	<b>7,558</b>
55	Accommodation	1,882	1,803	1,909	2,150	1,944	2,145
56	Food and beverage service activities	5,290	5,351	5,293	5,473	5,292	5,413
<b>58-63</b>	<b>Information and communication</b>	<b>1,932</b>	<b>2,085</b>	<b>2,038</b>	<b>2,365</b>	<b>2,042</b>	<b>2,303</b>
58	Publishing activities	239	256	254	277	251	279
59	Motion picture, video and television programme production, sound recording and music publishing activities	284	313	292	404	307	363
60	Programming and broadcasting activities	201	180	174	172	171	165
61	Telecommunications	195	177	167	178	167	177
62	Computer programming, consultancy and related activities	875	986	981	1,089	969	1,081
63	Information service activities	138	173	170	245	177	238
<b>64-66</b>	<b>Financial and insurance activities</b>	<b>1,250</b>	<b>1,315</b>	<b>1,273</b>	<b>1,288</b>	<b>1,260</b>	<b>1,284</b>
64	Financial service activities, except insurance and pension funding	674	743	699	699	683	690
65	Insurance, reinsurance and pension funding, except compulsory social security	225	215	223	201	216	199
66	Activities auxiliary to financial services and insurance activities	351	357	351	388	361	395
<b>68</b>	<b>Real estate activities</b>	<b>1,155</b>	<b>1,342</b>	<b>1,352</b>	<b>1,583</b>	<b>1,390</b>	<b>1,614</b>
<b>69-75</b>	<b>Professional, scientific and technical activities</b>	<b>6,069</b>	<b>6,646</b>	<b>6,679</b>	<b>7,728</b>	<b>6,742</b>	<b>7,679</b>
69	Legal and accounting activities	1,563	1,664	1,807	2,128	1,764	2,008
70	Activities of head offices; management consultancy activities	1,994	2,177	2,126	2,511	2,201	2,560
71	Architectural and engineering activities; technical testing and analysis	857	949	948	1,034	958	1,042
72	Scientific research and development	59	68	68	73	71	77
73	Advertising and market research	578	647	630	691	634	681
74	Other professional, scientific and technical activities	966	1,078	1,040	1,216	1,049	1,238
75	Veterinary activities	52	63	60	75	65	73

... Table 3. Part-time employment classified by period and economic activity

NACE division	Economic activity	Average 2020	Average 2021 (Revised)	July 2021	July 2022	August 2021 (Revised)	August 2022
<b>77-82</b>	<b>Administrative and support service activities</b>	<b>5,257</b>	<b>5,696</b>	<b>5,754</b>	<b>6,225</b>	<b>5,766</b>	<b>6,256</b>
77	Rental and leasing activities	555	561	567	627	563	617
78	Employment activities	618	647	718	975	741	977
79	Travel agency, tour operator and other reservation service and related activities	573	549	529	612	533	633
80	Security and investigation activities	1,229	1,306	1,300	1,291	1,261	1,313
81	Services to buildings and landscape activities	994	1,055	1,041	1,092	1,057	1,094
82	Office administrative, office support and other business support activities	1,288	1,578	1,599	1,628	1,611	1,622
<b>84</b>	<b>Public administration and defence; compulsory social security</b>	<b>3,117</b>	<b>3,330</b>	<b>4,704</b>	<b>5,288</b>	<b>4,662</b>	<b>5,163</b>
<b>85</b>	<b>Education</b>	<b>5,514</b>	<b>5,758</b>	<b>6,030</b>	<b>6,593</b>	<b>5,996</b>	<b>6,412</b>
<b>86-88</b>	<b>Human health and social work activities</b>	<b>3,578</b>	<b>3,610</b>	<b>3,670</b>	<b>3,851</b>	<b>3,707</b>	<b>3,859</b>
86	Human health activities	1,364	1,544	1,541	1,645	1,551	1,647
87	Residential care activities	1,348	1,204	1,205	1,166	1,216	1,176
88	Social work activities without accommodation	866	862	924	1,040	940	1,036
<b>90-93</b>	<b>Arts, entertainment and recreation</b>	<b>3,162</b>	<b>3,282</b>	<b>3,300</b>	<b>3,786</b>	<b>3,357</b>	<b>3,822</b>
90	Creative, arts and entertainment activities	1,271	1,388	1,385	1,594	1,384	1,597
91	Libraries, archives, museums and other cultural activities	103	99	93	116	97	112
92	Gambling and betting activities	515	513	487	508	481	505
93	Sports activities and amusement and recreation activities	1,273	1,282	1,335	1,568	1,395	1,608
<b>94-96</b>	<b>Other service activities</b>	<b>2,830</b>	<b>3,059</b>	<b>3,091</b>	<b>3,253</b>	<b>3,102</b>	<b>3,249</b>
94	Activities of membership organisations	561	572	608	586	602	565
95	Repair of computers and personal and household goods	205	234	236	261	251	279
96	Other personal service activities	2,064	2,253	2,247	2,406	2,249	2,405
<b>97-98</b>	<b>Activities of households as employers; undifferentiated goods and services-producing activities of households for own use</b>	<b>40</b>	<b>42</b>	<b>40</b>	<b>45</b>	<b>39</b>	<b>44</b>
97	Activities of households as employers of domestic personnel	35	38	38	43	38	43
98	Undifferentiated goods- and services-producing activities of private households for own use	5	4	2	2	1	1
<b>99</b>	<b>Activities of extraterritorial organisations and bodies</b>	<b>14</b>	<b>13</b>	<b>14</b>	<b>11</b>	<b>14</b>	<b>11</b>
<b>01-99</b>	<b>Total</b>	<b>62,903</b>	<b>66,578</b>	<b>68,305</b>	<b>74,651</b>	<b>68,572</b>	<b>74,385</b>

Table 4. Part-time employment classified by period, economic activity, part-time job type and category ...

NACE division	Economic activity	Type of part-time job	Category	Average 2020	Average 2021 (Revised)	July 2021	July 2022	August 2021 (Revised)	August 2022
01-03	Agriculture, forestry and fishing	Part-timers holding a full-time job	Males	1,698	1,858	1,871	1,984	1,878	1,996
			Females	152	176	180	213	184	216
			Malta	1,440	1,583	1,598	1,711	1,603	1,720
			Gozo	410	451	453	486	459	492
			<b>Total</b>	<b>1,850</b>	<b>2,034</b>	<b>2,051</b>	<b>2,197</b>	<b>2,062</b>	<b>2,212</b>
			<b>Total</b>	<b>1,850</b>	<b>2,034</b>	<b>2,051</b>	<b>2,197</b>	<b>2,062</b>	<b>2,212</b>
		Part-time as a primary job	Males	842	882	879	916	887	924
			Females	196	206	203	217	204	217
			Malta	859	905	898	937	905	942
			Gozo	179	183	184	196	186	199
			<b>Total</b>	<b>1,038</b>	<b>1,088</b>	<b>1,082</b>	<b>1,133</b>	<b>1,091</b>	<b>1,141</b>
			<b>Total</b>	<b>1,038</b>	<b>1,088</b>	<b>1,082</b>	<b>1,133</b>	<b>1,091</b>	<b>1,141</b>
05-09	Mining and quarrying	Part-timers holding a full-time job	Males	19	21	21	28	22	31
			Females	4	4	5	4	5	5
			Malta	13	15	15	19	16	20
			Gozo	10	10	11	13	11	16
		<b>Total</b>	<b>23</b>	<b>25</b>	<b>26</b>	<b>32</b>	<b>27</b>	<b>36</b>	
		Part-time as a primary job	Males	16	14	13	14	13	14
			Females	5	4	4	2	4	2
			Malta	17	14	13	12	13	12
			Gozo	4	4	4	4	4	4
		<b>Total</b>	<b>21</b>	<b>18</b>	<b>17</b>	<b>16</b>	<b>17</b>	<b>16</b>	
		<b>Total</b>	<b>44</b>	<b>43</b>	<b>43</b>	<b>48</b>	<b>44</b>	<b>52</b>	
		10-33	Manufacturing	Part-timers holding a full-time job	Males	1,166	1,247	1,240	1,317
Females	307				387	381	427	388	430
Malta	1,303				1,448	1,433	1,549	1,438	1,566
Gozo	170				186	188	195	188	193
<b>Total</b>	<b>1,473</b>			<b>1,634</b>	<b>1,621</b>	<b>1,744</b>	<b>1,626</b>	<b>1,759</b>	
Part-time as a primary job	Males			790	807	790	814	789	814
	Females			833	852	860	863	862	872
	Malta			1,497	1,529	1,519	1,549	1,526	1,559
	Gozo			126	130	131	128	125	127
<b>Total</b>	<b>1,623</b>			<b>1,659</b>	<b>1,650</b>	<b>1,677</b>	<b>1,651</b>	<b>1,686</b>	
<b>Total</b>	<b>3,096</b>			<b>3,293</b>	<b>3,271</b>	<b>3,421</b>	<b>3,277</b>	<b>3,445</b>	
35	Electricity, gas, steam and air conditioning supply			Part-timers holding a full-time job	Males	2	1	1	-
		Females	1		1	2	2	2	2
		Malta	3		2	3	2	3	2
		Gozo	-		-	-	-	-	-
		<b>Total</b>	<b>3</b>	<b>2</b>	<b>3</b>	<b>2</b>	<b>3</b>	<b>2</b>	
		Part-time as a primary job	Males	2	5	14	7	17	15
			Females	2	5	13	7	13	11
			Malta	3	9	26	13	29	25
			Gozo	1	1	1	1	1	1
		<b>Total</b>	<b>4</b>	<b>10</b>	<b>27</b>	<b>14</b>	<b>30</b>	<b>26</b>	
		<b>Total</b>	<b>7</b>	<b>12</b>	<b>30</b>	<b>16</b>	<b>33</b>	<b>28</b>	



... Table 4. Part-time employment classified by period, economic activity, part-time job type and category

NACE division	Economic activity	Type of part-time job	Category	Average 2020	Average 2021 (Revised)	July 2021	July 2022	August 2021 (Revised)	August 2022
36-39	Water supply; sewerage, waste management and remediation activities	Part-timers holding a full-time job	Males	64	63	61	63	56	55
			Females	9	8	8	11	7	10
			Malta	67	65	62	68	56	59
			Gozo	6	6	7	6	7	6
			<b>Total</b>	<b>73</b>	<b>71</b>	<b>69</b>	<b>74</b>	<b>63</b>	<b>65</b>
		Part-time as a primary job	Males	53	49	68	57	67	58
			Females	23	28	49	51	47	45
			Malta	73	74	112	104	110	100
			Gozo	3	3	5	4	4	3
			<b>Total</b>	<b>76</b>	<b>77</b>	<b>117</b>	<b>108</b>	<b>114</b>	<b>103</b>
<b>Total</b>			<b>149</b>	<b>148</b>	<b>186</b>	<b>182</b>	<b>177</b>	<b>168</b>	
41-43	Construction	Part-timers holding a full-time job	Males	1,279	1,452	1,450	1,532	1,469	1,560
			Females	112	126	126	143	127	143
			Malta	1,138	1,293	1,286	1,358	1,303	1,382
			Gozo	253	285	290	317	293	321
			<b>Total</b>	<b>1,391</b>	<b>1,578</b>	<b>1,576</b>	<b>1,675</b>	<b>1,596</b>	<b>1,703</b>
		Part-time as a primary job	Males	681	732	746	811	746	808
			Females	162	178	188	207	192	205
			Malta	751	817	845	913	849	911
			Gozo	92	93	89	105	89	102
			<b>Total</b>	<b>843</b>	<b>910</b>	<b>934</b>	<b>1,018</b>	<b>938</b>	<b>1,013</b>
<b>Total</b>			<b>2,234</b>	<b>2,488</b>	<b>2,510</b>	<b>2,693</b>	<b>2,534</b>	<b>2,716</b>	
45-47	Wholesale and retail trade; repair of motor vehicles and motorcycles	Part-timers holding a full-time job	Males	2,693	2,900	2,867	3,048	2,883	3,049
			Females	1,559	1,744	1,718	1,962	1,728	1,965
			Malta	3,832	4,199	4,146	4,528	4,168	4,534
			Gozo	420	445	439	482	443	480
			<b>Total</b>	<b>4,252</b>	<b>4,644</b>	<b>4,585</b>	<b>5,010</b>	<b>4,611</b>	<b>5,014</b>
		Part-time as a primary job	Males	1,987	1,985	1,962	2,055	1,958	2,053
			Females	4,136	3,996	3,934	4,006	3,924	3,978
			Malta	5,722	5,570	5,488	5,665	5,477	5,639
			Gozo	401	411	408	396	405	392
			<b>Total</b>	<b>6,123</b>	<b>5,981</b>	<b>5,896</b>	<b>6,061</b>	<b>5,882</b>	<b>6,031</b>
<b>Total</b>			<b>10,375</b>	<b>10,625</b>	<b>10,481</b>	<b>11,071</b>	<b>10,493</b>	<b>11,045</b>	
49-53	Transportation and storage	Part-timers holding a full-time job	Males	1,482	1,908	1,918	2,312	1,944	2,364
			Females	264	335	340	394	335	402
			Malta	1,623	2,066	2,079	2,480	2,102	2,542
			Gozo	123	177	179	226	177	224
			<b>Total</b>	<b>1,746</b>	<b>2,243</b>	<b>2,258</b>	<b>2,706</b>	<b>2,279</b>	<b>2,766</b>
		Part-time as a primary job	Males	891	931	912	1,175	926	1,187
			Females	383	341	334	370	343	371
			Malta	1,200	1,196	1,167	1,454	1,190	1,465
			Gozo	74	76	79	91	79	93
			<b>Total</b>	<b>1,274</b>	<b>1,272</b>	<b>1,246</b>	<b>1,545</b>	<b>1,269</b>	<b>1,558</b>
<b>Total</b>			<b>3,020</b>	<b>3,515</b>	<b>3,504</b>	<b>4,251</b>	<b>3,548</b>	<b>4,324</b>	

... Table 4. Part-time employment classified by period, economic activity, part-time job type and category

NACE division	Economic activity	Type of part-time job	Category	Average 2020	Average 2021 (Revised)	July 2021	July 2022	August 2021 (Revised)	August 2022
55-56	Accommodation and food service activities	Part-timers holding a full-time job	Males	2,240	2,415	2,362	2,637	2,393	2,619
			Females	1,023	1,067	1,044	1,159	1,054	1,176
			Malta	2,894	3,107	3,033	3,384	3,067	3,377
			Gozo	369	375	373	412	380	418
			<b>Total</b>	<b>3,263</b>	<b>3,482</b>	<b>3,406</b>	<b>3,796</b>	<b>3,447</b>	<b>3,795</b>
		Part-time as a primary job	Males	1,842	1,748	1,826	1,846	1,806	1,800
			Females	2,067	1,924	1,970	1,981	1,983	1,963
			Malta	3,573	3,354	3,443	3,467	3,438	3,397
			Gozo	336	318	353	360	351	366
			<b>Total</b>	<b>3,909</b>	<b>3,672</b>	<b>3,796</b>	<b>3,827</b>	<b>3,789</b>	<b>3,763</b>
<b>Total</b>		<b>7,172</b>	<b>7,154</b>	<b>7,202</b>	<b>7,623</b>	<b>7,236</b>	<b>7,558</b>		
58-63	Information and communication	Part-timers holding a full-time job	Males	834	944	927	1,042	949	1,033
			Females	270	293	286	333	288	326
			Malta	1,036	1,160	1,134	1,279	1,155	1,263
			Gozo	68	77	79	96	82	96
			<b>Total</b>	<b>1,104</b>	<b>1,237</b>	<b>1,213</b>	<b>1,375</b>	<b>1,237</b>	<b>1,359</b>
		Part-time as a primary job	Males	466	478	468	578	448	570
			Females	362	370	357	412	357	374
			Malta	788	802	784	933	764	890
			Gozo	40	46	41	57	41	54
			<b>Total</b>	<b>828</b>	<b>848</b>	<b>825</b>	<b>990</b>	<b>805</b>	<b>944</b>
<b>Total</b>		<b>1,932</b>	<b>2,085</b>	<b>2,038</b>	<b>2,365</b>	<b>2,042</b>	<b>2,303</b>		
64-66	Financial and insurance activities	Part-timers holding a full-time job	Males	328	340	323	340	317	333
			Females	169	187	181	198	172	194
			Malta	481	510	487	523	472	510
			Gozo	16	17	17	15	17	17
			<b>Total</b>	<b>497</b>	<b>527</b>	<b>504</b>	<b>538</b>	<b>489</b>	<b>527</b>
		Part-time as a primary job	Males	286	307	303	307	297	313
			Females	467	481	466	443	474	444
			Malta	733	764	745	731	747	739
			Gozo	20	24	24	19	24	18
			<b>Total</b>	<b>753</b>	<b>788</b>	<b>769</b>	<b>750</b>	<b>771</b>	<b>757</b>
<b>Total</b>		<b>1,250</b>	<b>1,315</b>	<b>1,273</b>	<b>1,288</b>	<b>1,260</b>	<b>1,284</b>		
68	Real estate activities	Part-timers holding a full-time job	Males	460	550	556	676	571	692
			Females	258	312	309	376	317	387
			Malta	622	757	761	918	782	942
			Gozo	96	105	104	134	106	137
			<b>Total</b>	<b>718</b>	<b>862</b>	<b>865</b>	<b>1,052</b>	<b>888</b>	<b>1,079</b>
		Part-time as a primary job	Males	187	206	208	232	218	233
			Females	250	274	279	299	284	302
			Malta	378	427	434	476	446	478
			Gozo	59	53	53	55	56	57
			<b>Total</b>	<b>437</b>	<b>480</b>	<b>487</b>	<b>531</b>	<b>502</b>	<b>535</b>
<b>Total</b>		<b>1,155</b>	<b>1,342</b>	<b>1,352</b>	<b>1,583</b>	<b>1,390</b>	<b>1,614</b>		

... Table 4. Part-time employment classified by period, economic activity, part-time job type and category

NACE division	Economic activity	Type of part-time job	Category	Average 2020	Average 2021 (Revised)	July 2021	July 2022	August 2021 (Revised)	August 2022
69-75	Professional, scientific and technical activities	Part-timers holding a full-time job	Males	2,116	2,344	2,345	2,644	2,369	2,671
			Females	1,265	1,451	1,413	1,750	1,448	1,771
			Malta	3,166	3,557	3,531	4,138	3,588	4,185
			Gozo	215	238	227	256	229	257
			<b>Total</b>	<b>3,381</b>	<b>3,795</b>	<b>3,758</b>	<b>4,394</b>	<b>3,817</b>	<b>4,442</b>
			<b>Total</b>	<b>6,069</b>	<b>6,646</b>	<b>6,679</b>	<b>7,728</b>	<b>6,742</b>	<b>7,679</b>
		Part-time as a primary job	Males	1,222	1,295	1,308	1,518	1,329	1,484
			Females	1,466	1,556	1,613	1,816	1,596	1,753
			Malta	2,543	2,703	2,765	3,157	2,779	3,070
			Gozo	145	148	156	177	146	167
			<b>Total</b>	<b>2,688</b>	<b>2,851</b>	<b>2,921</b>	<b>3,334</b>	<b>2,925</b>	<b>3,237</b>
			<b>Total</b>	<b>6,069</b>	<b>6,646</b>	<b>6,679</b>	<b>7,728</b>	<b>6,742</b>	<b>7,679</b>
77-82	Administrative and support service activities	Part-timers holding a full-time job	Males	1,700	1,826	1,788	1,991	1,817	2,033
			Females	871	987	951	1,149	978	1,159
			Malta	2,394	2,606	2,542	2,903	2,593	2,950
			Gozo	177	207	197	237	202	242
			<b>Total</b>	<b>2,571</b>	<b>2,813</b>	<b>2,739</b>	<b>3,140</b>	<b>2,795</b>	<b>3,192</b>
			<b>Total</b>	<b>5,257</b>	<b>5,696</b>	<b>5,754</b>	<b>6,225</b>	<b>5,766</b>	<b>6,256</b>
		Part-time as a primary job	Males	1,070	1,157	1,226	1,256	1,177	1,247
			Females	1,616	1,726	1,789	1,829	1,794	1,817
			Malta	2,477	2,663	2,774	2,828	2,727	2,812
			Gozo	209	220	241	257	244	252
			<b>Total</b>	<b>2,686</b>	<b>2,883</b>	<b>3,015</b>	<b>3,085</b>	<b>2,971</b>	<b>3,064</b>
			<b>Total</b>	<b>5,257</b>	<b>5,696</b>	<b>5,754</b>	<b>6,225</b>	<b>5,766</b>	<b>6,256</b>
84	Public administration and defence; compulsory social security	Part-timers holding a full-time job	Males	438	456	491	513	487	506
			Females	598	659	912	988	892	986
			Malta	942	1,011	1,274	1,378	1,251	1,372
			Gozo	94	104	129	123	128	120
			<b>Total</b>	<b>1,036</b>	<b>1,115</b>	<b>1,403</b>	<b>1,501</b>	<b>1,379</b>	<b>1,492</b>
			<b>Total</b>	<b>3,117</b>	<b>3,330</b>	<b>4,704</b>	<b>5,288</b>	<b>4,662</b>	<b>5,163</b>
		Part-time as a primary job	Males	691	782	1,185	1,399	1,198	1,371
			Females	1,390	1,433	2,116	2,388	2,085	2,300
			Malta	1,929	2,063	3,075	3,508	3,057	3,404
			Gozo	152	152	226	279	226	267
			<b>Total</b>	<b>2,081</b>	<b>2,215</b>	<b>3,301</b>	<b>3,787</b>	<b>3,283</b>	<b>3,671</b>
			<b>Total</b>	<b>3,117</b>	<b>3,330</b>	<b>4,704</b>	<b>5,288</b>	<b>4,662</b>	<b>5,163</b>
85	Education	Part-timers holding a full-time job	Males	1,684	1,773	1,799	1,863	1,831	1,851
			Females	1,551	1,693	1,750	1,934	1,775	1,893
			Malta	3,042	3,242	3,318	3,498	3,366	3,459
			Gozo	193	224	231	299	240	285
			<b>Total</b>	<b>3,235</b>	<b>3,466</b>	<b>3,549</b>	<b>3,797</b>	<b>3,606</b>	<b>3,744</b>
			<b>Total</b>	<b>5,514</b>	<b>5,758</b>	<b>6,030</b>	<b>6,593</b>	<b>5,996</b>	<b>6,412</b>
		Part-time as a primary job	Males	888	894	973	1,082	941	1,028
			Females	1,391	1,398	1,508	1,714	1,449	1,640
			Malta	2,149	2,167	2,344	2,626	2,247	2,499
			Gozo	130	125	137	170	143	169
			<b>Total</b>	<b>2,279</b>	<b>2,292</b>	<b>2,481</b>	<b>2,796</b>	<b>2,390</b>	<b>2,668</b>
			<b>Total</b>	<b>5,514</b>	<b>5,758</b>	<b>6,030</b>	<b>6,593</b>	<b>5,996</b>	<b>6,412</b>

... Table 4. Part-time employment classified by period, economic activity, part-time job type and category

NACE division	Economic activity	Type of part-time job	Category	Average 2020	Average 2021 (Revised)	July 2021	July 2022	August 2021 (Revised)	August 2022
86-88	Human health and social work activities	Part-timers holding a full-time job	Males	527	539	525	555	532	559
			Females	893	925	967	1,063	968	1,072
			Malta	1,311	1,347	1,380	1,500	1,386	1,512
			Gozo	109	117	112	118	114	119
			<b>Total</b>	<b>1,420</b>	<b>1,464</b>	<b>1,492</b>	<b>1,618</b>	<b>1,500</b>	<b>1,631</b>
		Part-time as a primary job	Males	365	393	399	412	409	412
			Females	1,793	1,753	1,779	1,821	1,798	1,816
			Malta	1,972	1,928	1,945	2,038	1,976	2,034
			Gozo	186	218	233	195	231	194
			<b>Total</b>	<b>2,158</b>	<b>2,146</b>	<b>2,178</b>	<b>2,233</b>	<b>2,207</b>	<b>2,228</b>
<b>Total</b>	<b>3,578</b>	<b>3,610</b>	<b>3,670</b>	<b>3,851</b>	<b>3,707</b>	<b>3,859</b>			
90-93	Arts, entertainment and recreation	Part-timers holding a full-time job	Males	1,134	1,191	1,173	1,352	1,230	1,371
			Females	587	645	660	808	671	822
			Malta	1,605	1,714	1,716	2,025	1,776	2,048
			Gozo	116	122	117	135	125	145
			<b>Total</b>	<b>1,721</b>	<b>1,836</b>	<b>1,833</b>	<b>2,160</b>	<b>1,901</b>	<b>2,193</b>
		Part-time as a primary job	Males	654	662	690	755	678	763
			Females	787	784	777	871	778	866
			Malta	1,349	1,353	1,373	1,531	1,361	1,532
			Gozo	92	93	94	95	95	97
			<b>Total</b>	<b>1,441</b>	<b>1,446</b>	<b>1,467</b>	<b>1,626</b>	<b>1,456</b>	<b>1,629</b>
<b>Total</b>	<b>3,162</b>	<b>3,282</b>	<b>3,300</b>	<b>3,786</b>	<b>3,357</b>	<b>3,822</b>			
94-96	Other service activities	Part-timers holding a full-time job	Males	596	696	698	745	710	758
			Females	574	678	665	750	681	751
			Malta	1,099	1,293	1,279	1,406	1,309	1,424
			Gozo	71	81	84	89	82	85
			<b>Total</b>	<b>1,170</b>	<b>1,374</b>	<b>1,363</b>	<b>1,495</b>	<b>1,391</b>	<b>1,509</b>
		Part-time as a primary job	Males	510	552	579	580	577	570
			Females	1,150	1,133	1,149	1,178	1,134	1,170
			Malta	1,552	1,568	1,604	1,637	1,588	1,617
			Gozo	108	117	124	121	123	123
			<b>Total</b>	<b>1,660</b>	<b>1,685</b>	<b>1,728</b>	<b>1,758</b>	<b>1,711</b>	<b>1,740</b>
<b>Total</b>	<b>2,830</b>	<b>3,059</b>	<b>3,091</b>	<b>3,253</b>	<b>3,102</b>	<b>3,249</b>			
97-98	Activities of households as employers; undifferentiated goods- and services-producing activities of households for own use	Part-timers holding a full-time job	Males	9	12	10	11	10	10
			Females	10	10	10	10	10	10
			Malta	16	19	18	18	18	17
			Gozo	3	3	2	3	2	3
			<b>Total</b>	<b>19</b>	<b>22</b>	<b>20</b>	<b>21</b>	<b>20</b>	<b>20</b>
		Part-time as a primary job	Males	3	2	2	2	2	2
			Females	18	18	18	22	17	22
			Malta	17	17	17	22	16	22
			Gozo	4	3	3	2	3	2
			<b>Total</b>	<b>21</b>	<b>20</b>	<b>20</b>	<b>24</b>	<b>19</b>	<b>24</b>
<b>Total</b>	<b>40</b>	<b>42</b>	<b>40</b>	<b>45</b>	<b>39</b>	<b>44</b>			

... Table 4. Part-time employment classified by period, economic activity, part-time job type and category

NACE division	Economic activity	Type of part-time job	Category	Average 2020	Average 2021 (Revised)	July 2021	July 2022	August 2021 (Revised)	August 2022
99	Activities of extraterritorial organisations and bodies	Part-timers holding a full-time job	Males	1	-	-	-	-	-
			Females	1	2	2	1	2	1
			Malta	2	2	2	1	2	1
			Gozo	-	-	-	-	-	-
			<b>Total</b>	<b>2</b>	<b>2</b>	<b>2</b>	<b>1</b>	<b>2</b>	<b>1</b>
		Part-time as a primary job	Males	3	2	3	2	3	2
			Females	9	9	9	8	9	8
			Malta	12	11	12	10	12	10
			Gozo	-	-	-	-	-	-
			<b>Total</b>	<b>12</b>	<b>11</b>	<b>12</b>	<b>10</b>	<b>12</b>	<b>10</b>
<b>Total</b>	<b>14</b>	<b>13</b>	<b>14</b>	<b>11</b>	<b>14</b>	<b>11</b>			
01-99	Total	Part-timers holding a full-time job	Males	20,470	22,536	22,426	24,653	22,707	24,820
			Females	10,478	11,690	11,910	13,675	12,032	13,721
			Malta	28,029	30,996	31,097	34,686	31,454	34,885
			Gozo	2,919	3,230	3,239	3,642	3,285	3,656
			<b>Total</b>	<b>30,948</b>	<b>34,226</b>	<b>34,336</b>	<b>38,328</b>	<b>34,739</b>	<b>38,541</b>
		Part-time as a primary job	Males	13,449	13,883	14,554	15,818	14,486	15,668
			Females	18,506	18,469	19,415	20,505	19,347	20,176
			Malta	29,594	29,934	31,383	33,611	31,257	33,157
			Gozo	2,361	2,418	2,586	2,712	2,576	2,687
			<b>Total</b>	<b>31,955</b>	<b>32,352</b>	<b>33,969</b>	<b>36,323</b>	<b>33,833</b>	<b>35,844</b>
<b>Total part-timers</b>	<b>62,903</b>	<b>66,578</b>	<b>68,305</b>	<b>74,651</b>	<b>68,572</b>	<b>74,385</b>			

## Methodological Notes

1. The data provided in this release, including the relevant classifications, is based on administrative records held at Jobsplus. The information contained in this release may be subject to revision.
2. The National Statistics Office publishes, on a quarterly basis, another set of statistics on employment and unemployment based on the Labour Force Survey (LFS). When compiling LFS statistics, the NSO adopts the International Labour Organisation (ILO) definition, an internationally agreed definition on employment and unemployment. This definition has also been adopted by Eurostat and is used by all EU Member States. More details regarding the methodology used for the compilation of employment and unemployment statistics from the LFS may be found in quarterly LFS news releases.  

Since Jobsplus records and LFS results measure two different facets of employment and unemployment, these are not comparable. Users are therefore cautioned that these two sets of statistics should not be used interchangeably.
3. Full-time and part-time status is determined by the employer's declaration (or that made by a self-employed person) in the engagement form which is required to be sent to Jobsplus upon commencement of employment.
4. Apprentices are included under their respective economic activity.
5. **Definitions:**
  - **Labour Supply:** Full-time gainfully occupied population and the registered unemployed population.
  - **Apprentices, trainees and students:** Includes apprentices, trainees, Junior College and University students in the summer work-phase, undergraduate trainees and trainees with fixed contracts.
  - **Regional employment:** Data on Malta/Gozo employment differs on the basis of economic sector. Accordingly, the data on private sector employment depends on employee residence, whereas data for public sector depends on employer information on the location of its employees.
  - **Full-time equivalent (FTE):** Employment in full-time equivalent is a conversion method used to measure the number of employees according to the number of hours worked. When using FTE a full-time employee working a 40-hour week is equivalent to 1.0, whereas a person who works 20 hours per week is equivalent to 0.5. Table 2 of this release includes persons who work full-time, persons on a full-time with reduced hours basis and full-time employees who are on unpaid leave. When converting these figures into FTE, full-time employees are considered as 1 whereas persons working full-time with reduced hours or who are on unpaid leave are considered according to the hours worked. FTE data is currently available in respect of public sector employment and is based on the administrative records of the People and Standards Division within the Office of the Prime Minister. FTE information for the private sector is not available.
  - **Part 1 of the unemployment register:** Persons registering under Part 1 are either new job seekers who have left school, re-entrants into the labour market, or individuals who have been made redundant by their former employer.
  - **Part 2 of the unemployment register:** Persons registering under Part 2 are either workers who have been dismissed from work due to disciplinary action, left work out of their own free will, refused work or training opportunities or were struck off the register after an inspection by Law Enforcement personnel.
6. More information relating to this news release may be accessed at:  
Statistical concepts: <https://metadata.nso.gov.mt/concepts.aspx>  
Classifications: <https://metadata.nso.gov.mt/classificationdetails.aspx?id=NACE%20Rev.%2020>
7. References to this news release are to be cited appropriately.
8. A detailed news release calendar is available on:  
[https://nso.gov.mt/en/News\\_Releases/Release\\_Calendar/Pages/News-Release-Calendar.aspx](https://nso.gov.mt/en/News_Releases/Release_Calendar/Pages/News-Release-Calendar.aspx)